



# **GIS Approach for Economic Analysis**

Statewide Trash Policy



# Objective

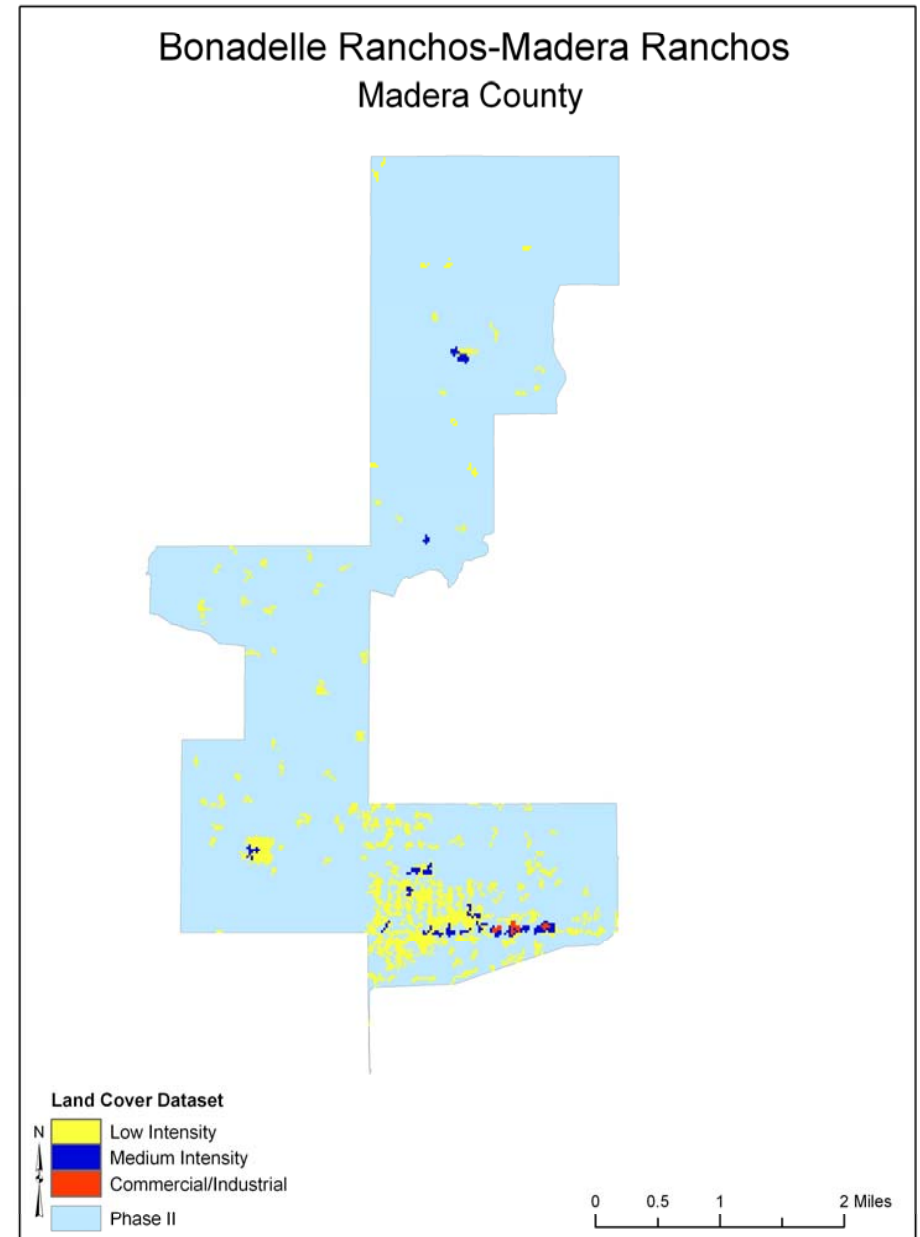
- How many storm drains are within a linear road mile of Phase I and Phase II areas?
- Based on land cover
  - Low Density Residential
  - High Density Residential
  - Commercial/Industrial areas

# Background Data

- Data acquisition difficult for entire state
- USGS Multi-Resolution Land Characteristics Consortium Land Cover Data
  - Developed, Low Intensity
  - Developed, Medium Intensity
  - Developed, High Intensity

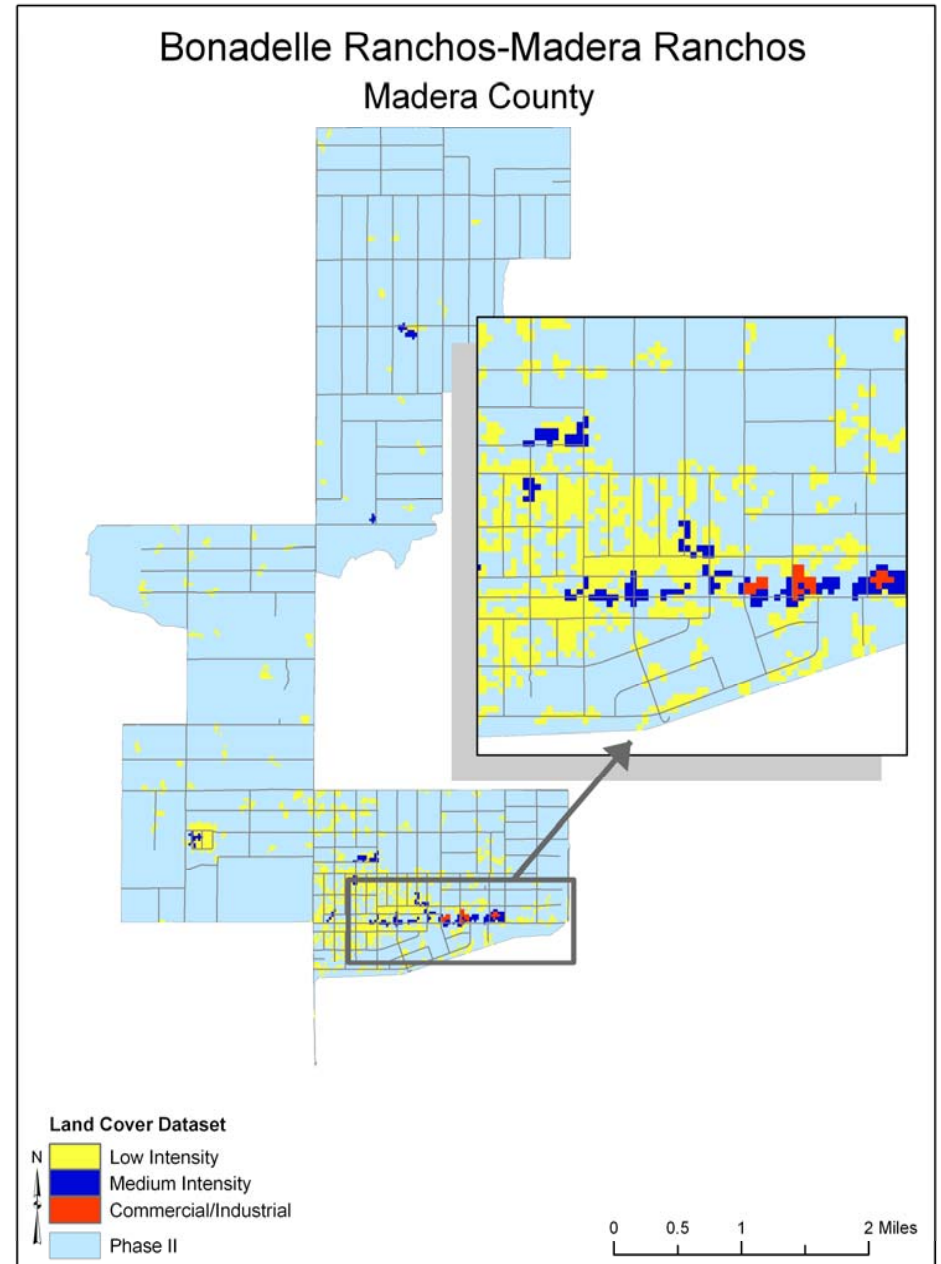
# Process

- Only land use falling within a designated Phase I and current Phase II permits will be used



# Process

- Roads will be overlaid to see which segments fall within the land cover



# Process

- Roads will be segmented and storm drains will be calculated to estimate the number of storm drains

