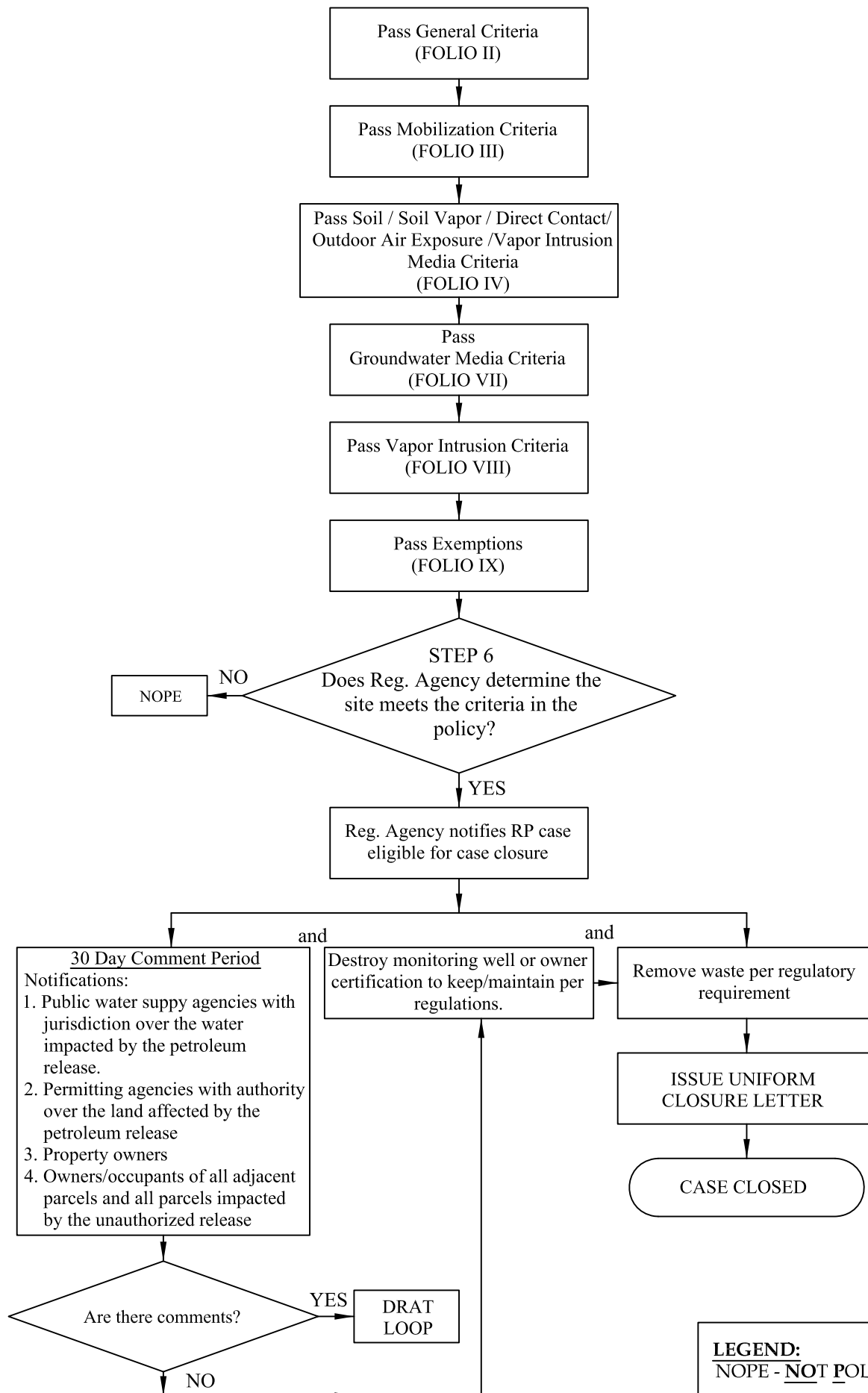


# Low Threat Closure Process

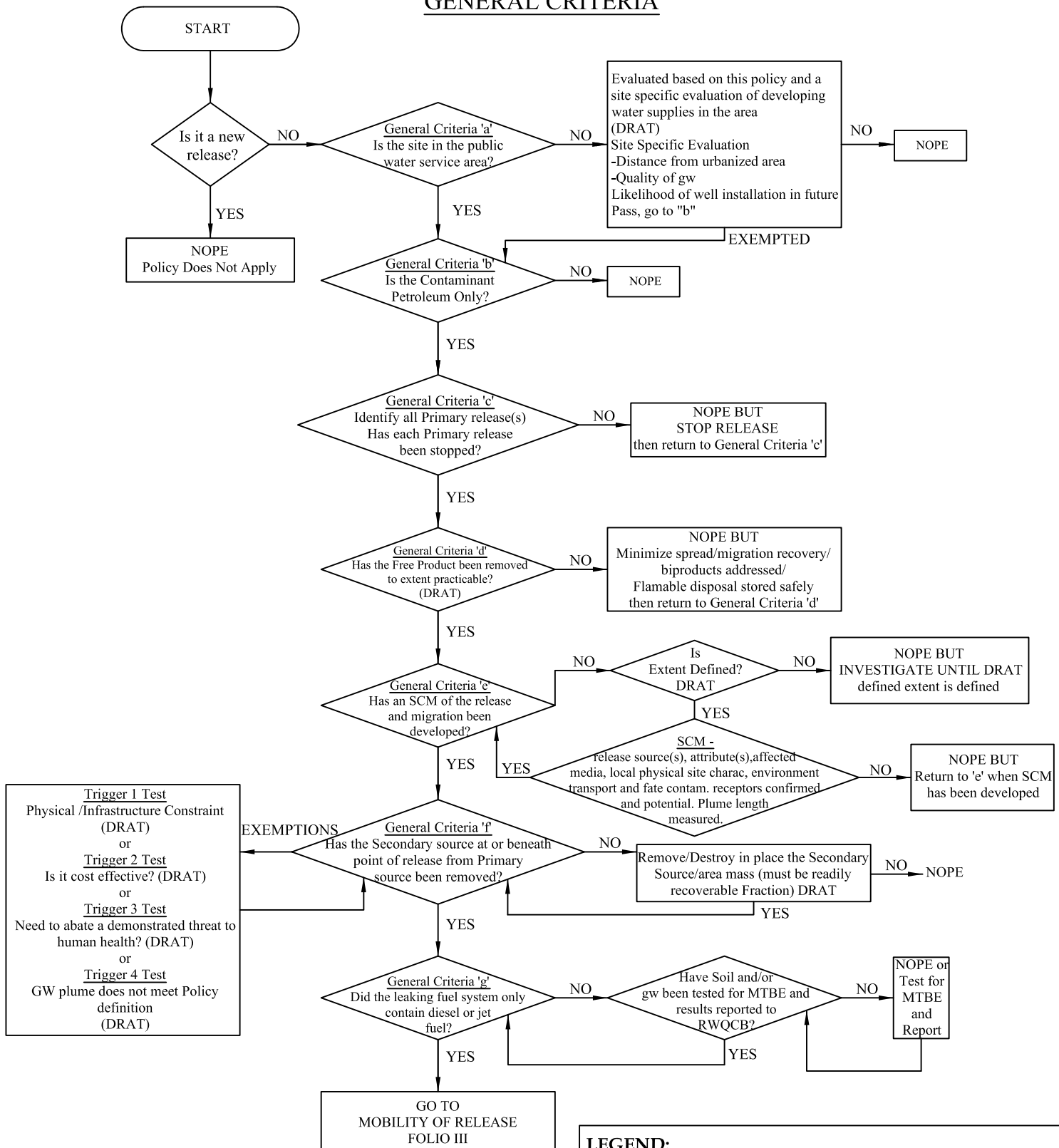


**LEGEND:**  
NOPE - NOT POLICY ELIGIBLE

## Low-Threat Case Closure Criteria

### Site Evaluation of Closure Readiness for Mature Stable Petroleum UST unauthorized release sites

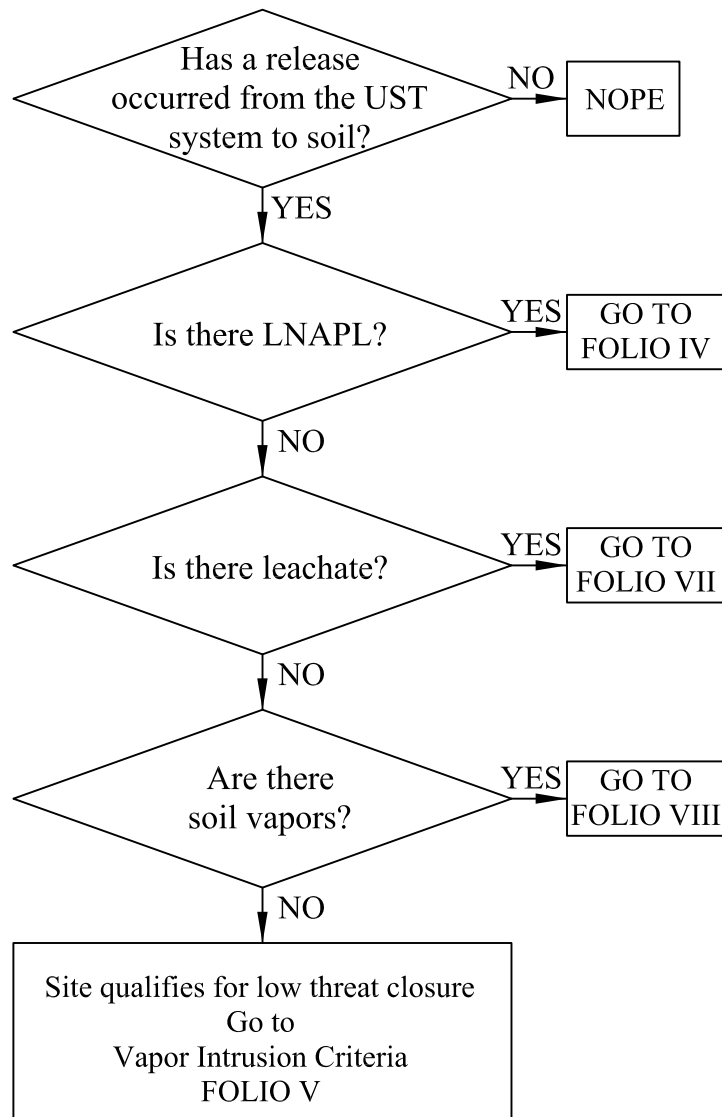
#### GENERAL CRITERIA



**LEGEND:**  
 NOPE - NOT POLICY ELIGIBLE  
 DRAT - DEPENDS ON REGULATORY, AGENCY AND TECHNOLOGY; WHICH IS AN ITERATIVE PROCESS

# Low-Threat Case Closure Criteria

## MOBILITY OF RELEASE

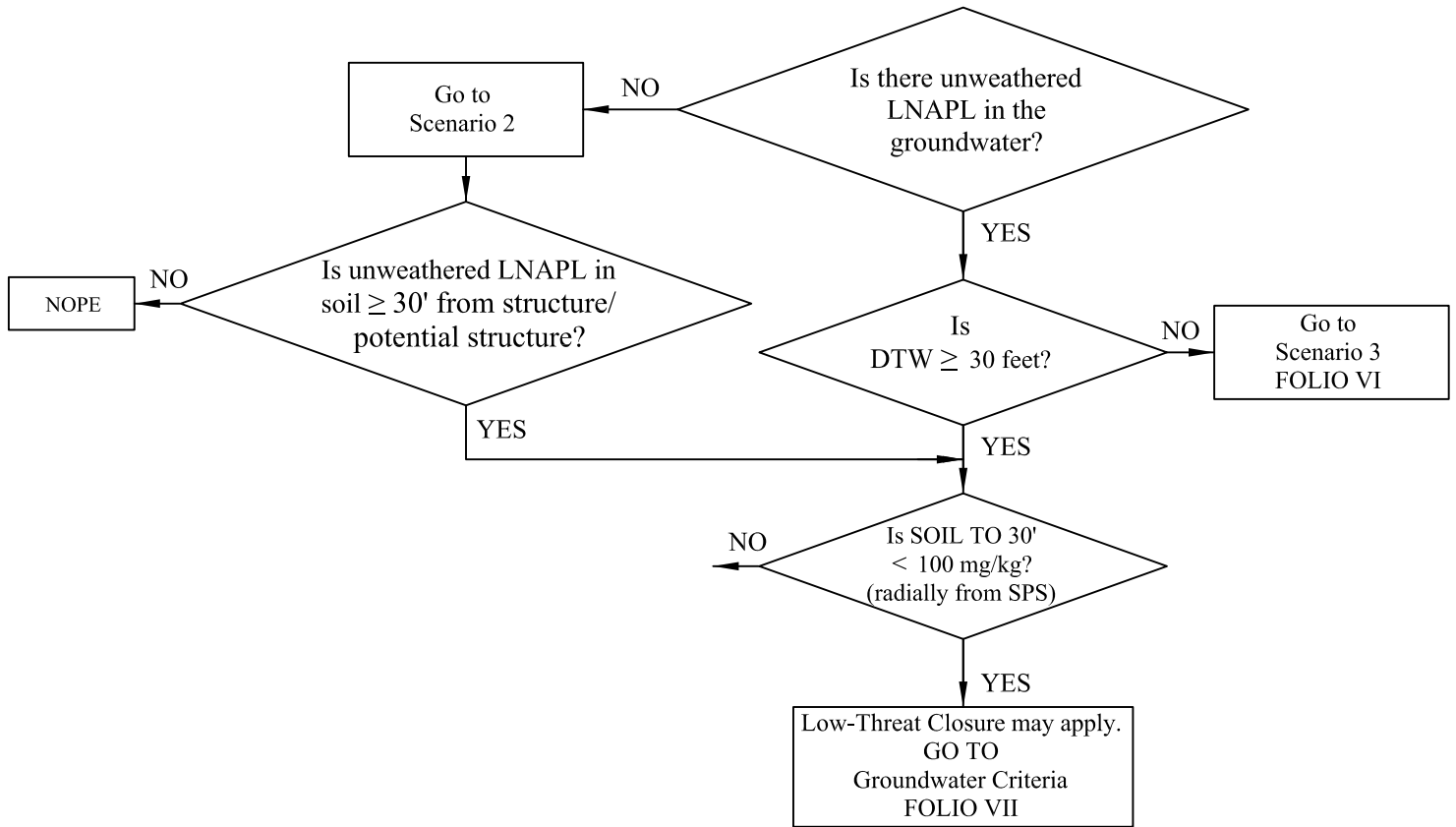




# Low-Threat Case Closure Criteria

## CRITERIA VAPOR INTRUSION

### Scenario 1

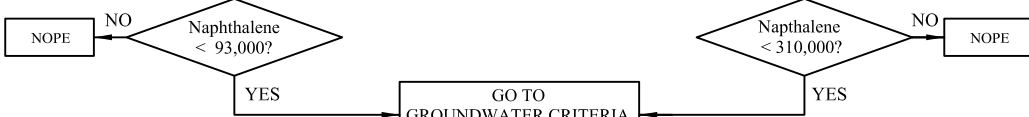
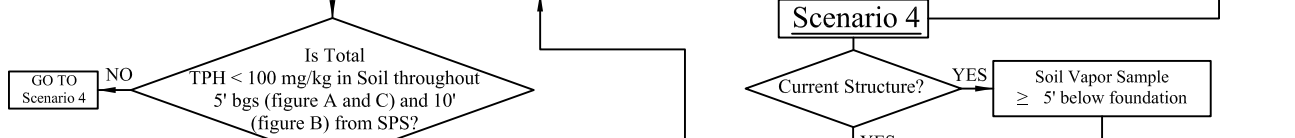
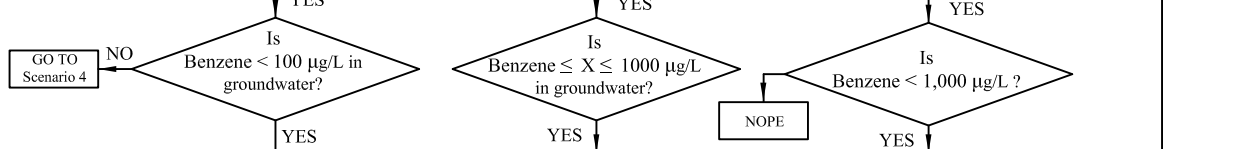
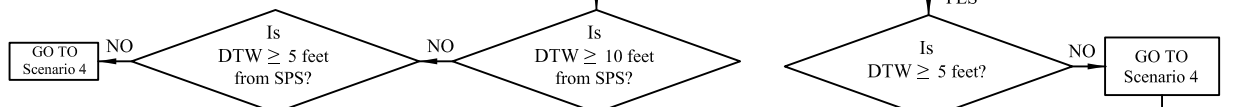


**LEGEND:**

SPS = STRUCTURE / POTENTIAL STRUCTURE

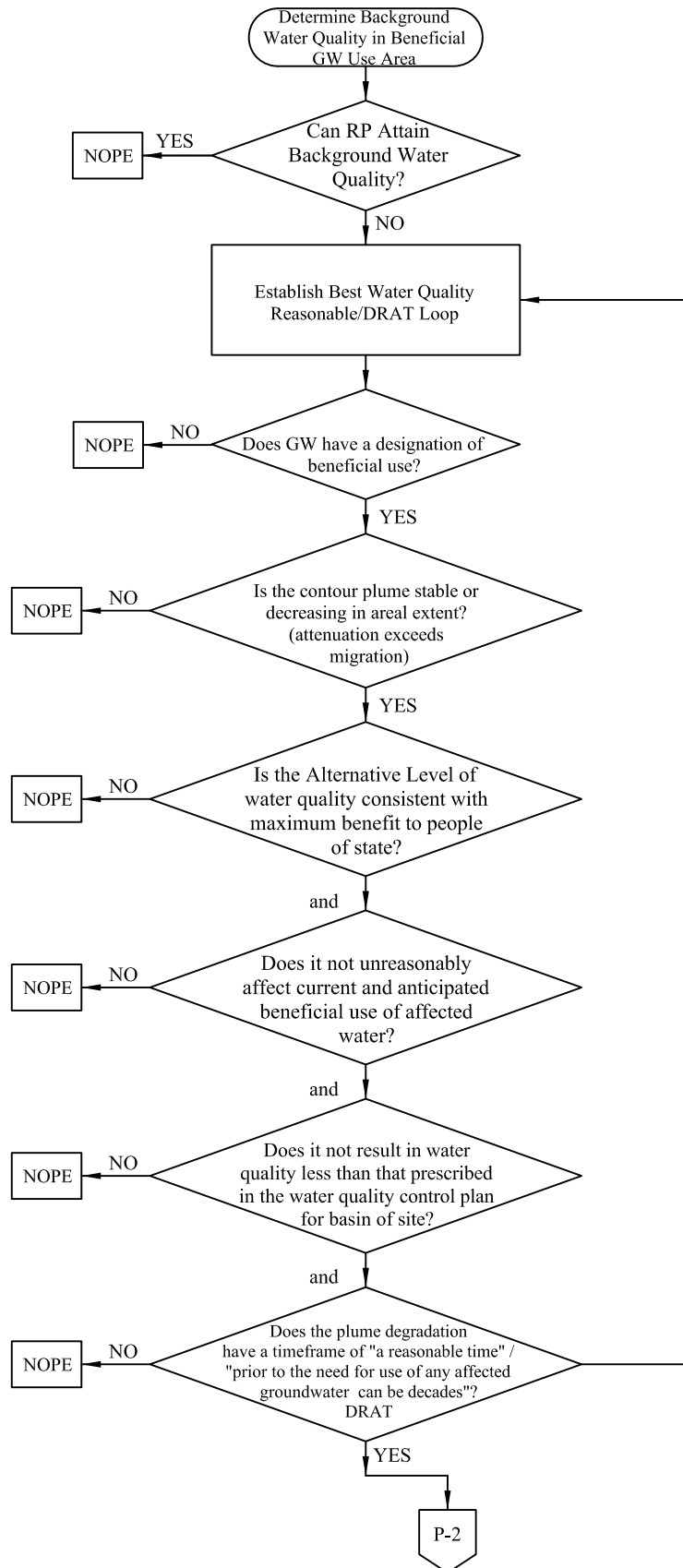
Low-Threat Case Closure Criteria  
 CRITERIA VAPOR INTRUSION

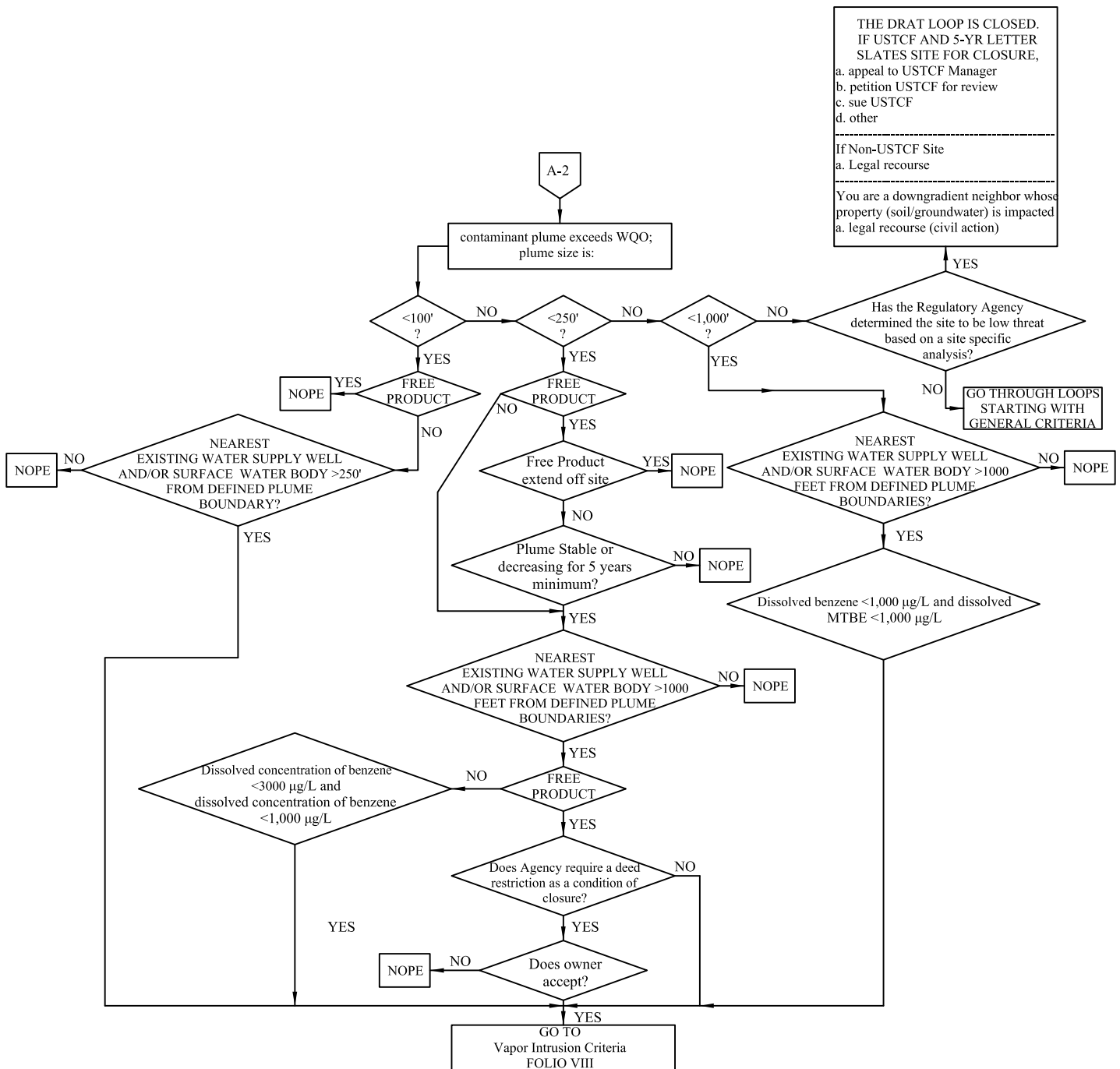
Scenario 3



Low-Threat Case Closure Criteria  
Site Evaluation of Readiness for Closure for Mature Stable Petroleum  
UST Unauthorized Release Sites

MEDIA SPECIFIC CRITERIA GROUNDWATER



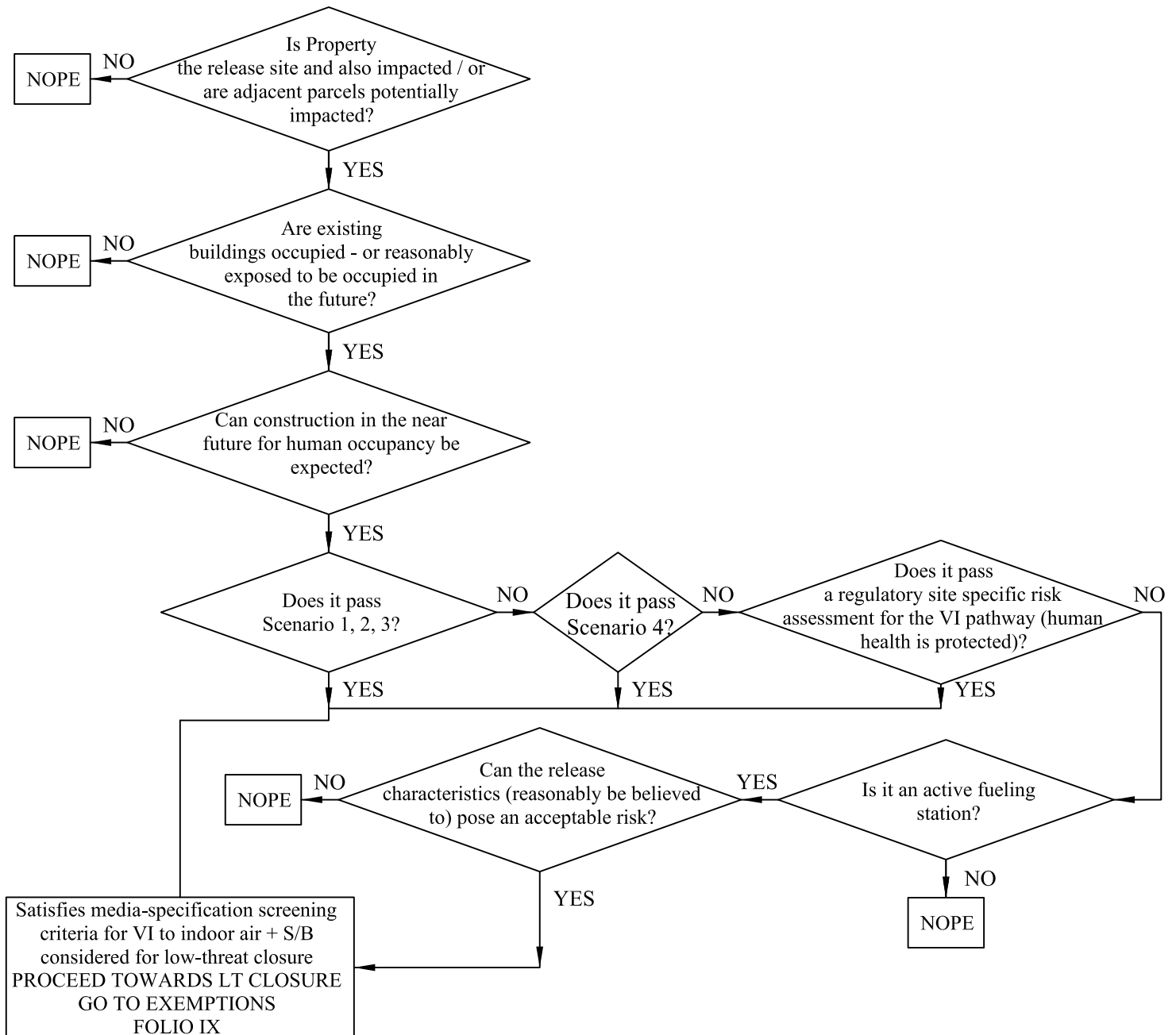




# Low-Threat Case Closure Criteria

## Site Evaluation of Closure Readiness for Mature Stable Petroleum UST unauthorized release sites

### Vapor-Intrusion (VI) Criteria



# Low-Threat Case Closure Criteria

## EXEMPTIONS

