

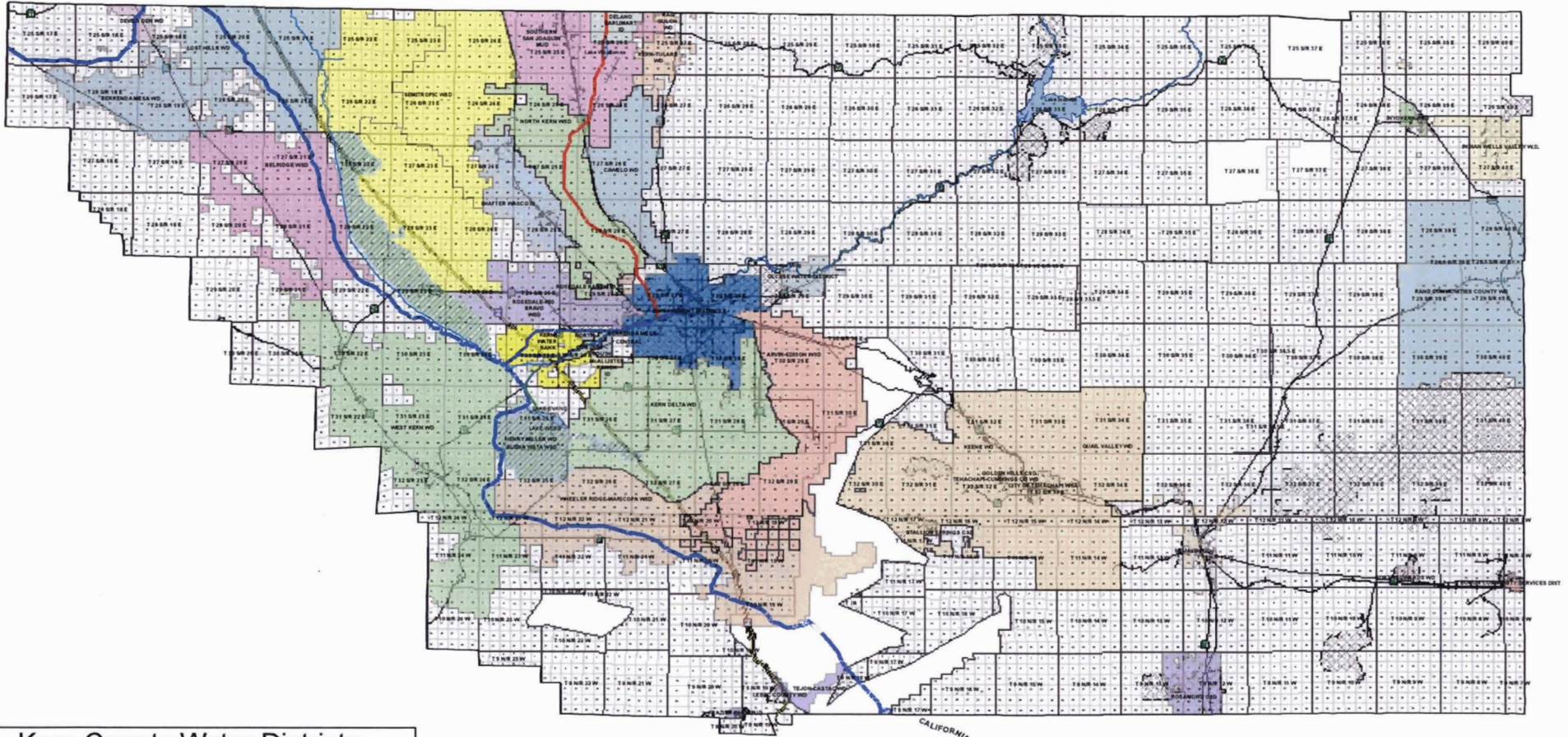
Paragraph 4, Purpose of Use, Diversion/Storage Amount and Season

Purpose of use	Direct Diversion				Storage		
	Rate - CFS	Amount Acre-Feet/Year	Begin Date	End Date	Acre-Feet Per Year	Beginning Date (Month & Day)	Ending Date (Month & Day)
Municipal	192	74,000	Jan. 1	Dec. 31			
Aquifer storage for municipal and irrigation	1,824				1,339,000	Jan. 1	Dec. 31
Irrigation	1,196	866,000	Jan. 1	Dec. 31			
Total	3,212 (Based on total diversion capacity on the Kern River.)						

4b. Total combined amount taken by direct diversion and storage during any one year will be 2,279,000 Acre-Feet Per Year.

4c. Reservoir storage is underground, and in Lake Isabella. ^{5/3}

4d. County in which diversion is located: Kern County in which water will be used: Kern



Kern County Water Districts



Miles
0 2.5 5 10



KW_DISTRICTS_1117_08007
Date: 08/08/07, T. Healy/ach
Rev: 08/08/07

Points of Diversion from the Kern River

POD/PORD #	California	California	Zone	Point within (40-acre Subdivision)	Section	Township	Range	Base and Meridian	Capacity (cfs)
	Coordinates (NAD 27)	Coordinates (NAD 27)							
	Northing	Easting							
Basin 1 Turnout	1649280	668936	5	NE 1/4 of SW 1/4	10	30S	26E	MDB&M	200
Basin 4 Turnout	1640512	662887	5	NW 1/4 of SE 1/4	17	30S	26E	MDB&M	150
Basin 9 Turnout	1646820	671760	5	NE 1/4 of NE 1/4	9	30S	26E	MDB&M	600
Basin 10 Turnout	1644620	671651	5	NW 1/4 of NE 1/4	9	30S	26E	MDB&M	150
Pioneer Headgate	1663348	676359	5	NE 1/4 of NE 1/4	1	30S	26E	MDB&M	310
Bellevue Inlet	1663348	676359	5	NE 1/4 of NE 1/5	1	30S	26E	MDB&M	120
Calloway Inlet	1694240	692964	5	SW 1/4 of SE 1/4	13	29S	27E	MDB&M	1000
McClung Weir	1647090.1	668897.0	5	NE 1/4 of SE 1/4	9	30S	26E	MDB&M	5000
Bellevue Weir	1663489.6	676089.0	5	NE 1/4 of NE 1/4	1	30S	26E	MDB&M	10,000
North Ponds	1662554	677041	5	SW 1/4 of SE 1/4	36	29S	26E	MDB&M	30
Diversion Weir	1628126.8	659207.0	5	SW 1/4 of NW 1/4	24	30S	26E	MDB&M	5,000
Basin 2 Headgate	1647990	668490	5	NE 1/4 of SE 1/4	9	30S	26E	MDB&M	500
Basin 10 West	1646556	670306	5	SW 1/4 of NE 1/4	9	30S	26E	MDB&M	150
Basin 10 East	1646912	671491	5	NW 1/4 of NE 1/4	9	30S	26E	MDB&M	150
Calloway Weir	1694313	692782	5	SW 1/4 of SE 1/4	13	29S	27E	MDB&M	10,000
River Canal Weir	1675017	680003	5	SW 1/4 of NW 1/4	33	29S	27E	MDB&M	5,000
Kern River Intertie (Flood Inflow)	1609290	645619	5	NE 1/4 of NE 1/4	5	31S	25E	MDB&M	3500
Kern River Canal East	1675017	680003	5	SW 1/4 of NW 1/4	33	29S	27E	MDB&M	900
Kern Water Bank Canal	1628129	659720	5	SE 1/4 of NW 1/4	24	30S	25E	MDB&M	800
Kern River Canal West	1628126.8	659207.0	5	SW 1/4 of NW 1/4	24	30S	26E	MDB&M	300
Main Canal	1624396	658218	5	NW 1/4 of SE 1/4	23	30S	25E	MDB&M	250
KWB Basin L1	1621947	654999	5	NE 1/4 of SW 1/4	23	30S	25E	MDB&M	40
West Kern Basin 1	1621849	658179	5	NE 1/4 of SW 1/4	23	30S	25E	MDB&M	200

Points of Rediversion to the California Aqueduct

KCWA (Kern Water Bank Authority)	1599570	656086	5	NE 1/4 of NE 1/4	25	30S	24E	MDB&M	750
KCWA (Cross Valley Canal/H. Miller)	1598950	656550	5	NE 1/4 of NE 1/4	25	30S	24E	MDB&M	800

Points of Rediversion from the California Aqueduct

KCWA (Teerink-Maricopa 15, Tehachapi-Cummings) WRM 15, TC	1751610	527701	5	TEJON RANCH				SBB&M	50
KCWA (Teerink-Maricopa 13B) WRM 13B	1727770	533487	5	NE 1/4 of SW 1/4	9	10N	19W	SBB&M	10
KCWA (Teerink-Maricopa 13) WRM 13	1725280	534726	5	SE 1/4 of NE 1/4	8	10N	19W	SBB&M	80
KCWA (Arvin Edison WSD)	1694810	561031	5	SW 1/4 of SE 1/4	16	11N	20W	SBB&M	200
KCWA (Teerink-Maricopa 4) WRM 4A, 4B	1611260	579752	5	SW 1/4 of NE 1/4	35	12N	23W	SBB&M	135
KCWA (Teerink-Maricopa 6) WRM 6	1644480	575407	5	NW 1/4 of NW 1/4	1	11N	22W	SBB&M	40
KCWA (Buena Vista 3)	1609820	635940	5	SE 1/4 of SE 1/4	8	31S	25E	MDB&M	125
KCWA (Buena Vista 4)	1598660	612885	5	NE 1/4 of NE 1/4	1	32S	24E	MDB&M	120
KCWA (Teerink-Maricopa 3) WRM 3A, 3B	1601620	580842	5	NE 1/4 of NE 1/4	33	12N	23W	SBB&M	75
KCWA (West Kern 2)	1588640	593448	5	SE 1/4 of SW 1/4	22	32S	24E	MDB&M	50
KCWA (Buena Vista 5/Kern-Cawelo)	1610970	636562	5	SW 1/4 of SW 1/4	9	31S	25E	MDB&M	250
KCWA (Buena Vista 7)	1611590	637329	5	NE 1/4 of SW 1/4	9	31S	25E	MDB&M	300
KCWA (West Kern 1)	1609590	644778	5	NE 1/4 of NE 1/4	5	31S	25E	MDB&M	50
KCWA (Lost Hills 8)	1495390	774412	5	SE 1/4 of SW 1/4	34	26S	21E	MDB&M	4

KCWA (Rosedale-Rio Bravo)	1599040	656368	5	NE 1/4 of NE 1/4	25	30S	24E	MDB&M	150
KCWA (Lost Hills 5A,5B)	1487070	789169	5	NE 1/4 of NE 1/4	20	26S	21E	MDB&M	400
KCWA (Belridge 1A)	1504240	753488	5	SE 1/4 of SW 1/4	24	27S	21E	MDB&M	100
KCWA (Buena Vista 1A, 1B)	1504380	753112	5	NE 1/4 of NW 1/4	25	27S	21E	MDB&M	290
KCWA (Belridge 1)	1502500	757633	5	NE 1/4 of NE 1/4	23	27S	21E	MDB&M	15
KCWA (West Kern 3)	1539820	691702	5	Centerline	19	29S	23E	MDB&M	15
KCWA (Lost Hills 7B)	1484070	792946	5	NE 1/4 of SW 1/4	17	26S	21E	MDB&M	2
KCWA (Lost Hills 1A,1B)	1446930	837115	5	NW 1/4 of NW 1/4	6	25S	20E	MDB&M	225
Coastal Branch	1439490	861814	5	NE 1/4 of SW 1/4	11	24S	19E	MDB&M	450
KCWA (Lost Hills 2A,2B)	1453310	832628	5	NE 1/4 of NW 1/4	8	25S	20E	MDB&M	115
KCWA (Lost Hills 3)	1461980	819820	5	SW 1/4 of NW 1/4	22	25S	20E	MDB&M	60
KCWA (Lost Hills 4A,4B,4C)	1469080	809280	5	SW 1/4 of NW 1/4	35	25S	20E	MDB&M	100
KCWA (Lost Hills 7A)	1484040	792979	5	NE 1/4 of SW 1/4	17	26S	21E	MDB&M	75
KCWA (Lost Hills 6)	1494230	777221	5	SE 1/4 of NW 1/4	34	26S	21E	MDB&M	1
KCWA (Belridge 2)	1504770	751681	5	SE 1/4 of NW 1/4	25	27S	21E	MDB&M	29
KCWA (Semitropic)	1504380	753112	5	NE 1/4 of NW 1/4	25	27S	21E	MDB&M	580
KCWA (Semitropic Penstock)	1504410	753044	5	NE 1/4 of NW 1/4	25	27S	21E	MDB&M	300
KCWA (Belridge 3)	1510080	731260	5	NE 1/4 of NW 1/4	18	28S	21E	MDB&M	60
KCWA (Belridge 4)	1513070	718560	5	SW 1/4 of NW 1/4	29	28S	21E	MDB&M	40
KCWA (Belridge 5A,5B,5C,5D)	1514430	715788	5	SE 1/4 of SW 1/4	29	28S	21E	MDB&M	610
KCWA (Belridge 6)	1521120	704908	5	NE 1/4 of NE 1/4	9	29S	22E	MDB&M	20
KCWA (Buena Vista 6/Elk Hills)	1565680	674941	5	NE 1/4 of SW 1/4	1	30S	23E	MDB&M	80
KCWA (Buena Vista 2)	1588960	662320	5	SE 1/4 of SE 1/4	15	30S	24E	MDB&M	250
KCWA (West Kern Turmin)	1606290	648591	5	SW 1/4 of NW 1/4	32	30S	25E	MDB&M	20
KCWA (Teerink-Maricopa 2) WRM 2	1590810	585550	5	SE 1/4 of NW 1/4	35	32S	24E	MDB&M	35
KCWA (Teerink-Maricopa 5) WRM 5A, 5B	1631250	575454	5	NW 1/4 of NE 1/4	4	11N	22W	SBB&M	195
KCWA (Teerink-Maricopa 7) WRM 7A	1661660	572044	5	NW 1/4 of SW 1/4	4	11N	21W	SBB&M	155
KCWA (Teerink-Maricopa 8) WRM 8A, 8B	1672600	569388	5	NE 1/4 of NW 1/4	11	11N	21W	SBB&M	110
KCWA (Teerink-Maricopa 10) WRM 10	1706850	554413	5	NW 1/4 of NE 1/4	26	11N	20W	SBB&M	150
KCWA (Teerink-Maricopa 11) WRM 11	1702920	545185	5	NW 1/4 of SW 1/4	35	11N	20W	SBB&M	36
KCWA (Teerink-Maricopa 12) WRM 12	1714900	538003	5	NW 1/4 of SW 1/4	6	10N	19W	SBB&M	65
KCWA (Teerink-Maricopa 13A) WRM 13A	1721950	536007	5	NE 1/4 of NW 1/4	8	10N	19W	SBB&M	11
KCWA (Teerink-Maricopa 14) WRM 14	1743590	524406	5	TEJON RANCH				SBB&M	70
KCWA (Berrenda Mesa 2)	1467890	810565	5	NW 1/4 of NW 1/4	35	25S	20E	MDB&M	60
KCWA (Teerink-Maricopa 9) WRM 9A, 9B	1688970	559597	5	NE 1/4 of NW 1/4	20	11N	20W	SBB&M	65
KCWA (Teerink-Maricopa 9A) WRM 9A	1702160	556773	5	NE 1/4 of SE 1/4	22	11N	20W	SBB&M	30

Section B: Miscellaneous Diversion Information

Paragraph 1a Irrigation¹

Crop	Acres	Method of Irrigation	Water Use Acre-Feet/Year	Season of Water Use	
				Beginning Date	Ending Date
Alfalfa (including seed)	92,579	Sprinkler, Row, Boarder	7.9	Mar. 1	Sep. 30
Almonds	111,684	Drip, Sprinkler, Row	5.6	Jan. 1	Dec. 31.
Apples	4,289	Drip, Sprinkler, Row	5.3	Jan. 1	Dec. 31.
Apricots	626	Drip, Sprinkler, Row	5.3	Jan. 1	Dec. 31.
Asparagus	646	Sprinkler, Row	3.8	Mar. 1	Sep. 30
Avocado	54	Drip, Sprinkler, Row	5.7	Jan. 1	Dec. 31.
Barley	1,054	Sprinkler, Row	1.6	Mar. 1	Sep. 30
Beans	6,563	Sprinkler, Row	4.1	Mar. 1	Sep. 30
Broccoli	4,857	Sprinkler, Row	1.1	Mar. 1	Sep. 30
Carrots	20,967	Sprinkler, Row	1.3	Jan. 1	Dec. 31.
Citrus	48,645	Drip, Sprinkler, Row	5.0	Jan. 1	Dec. 31.
Corn, Field & Sweet	27,004	Sprinkler, Row	5.4	Mar. 1	Sep. 30
Cotton	164,197	Sprinkler, Row	3.2	Mar. 1	Sep. 30
Figs	498	Drip, Sprinkler, Row	5.3	Jan. 1	Dec. 31.
Grapes	102,049	Drip, Sprinkler, Row	3.9	Jan. 1	Dec. 31.
Guayule, Jajoaba	203	Drip, Sprinkler, Row	2.0	Jan. 1	Dec. 31.
Kiwi	460	Drip, Sprinkler, Row	4.1	Jan. 1	Dec. 31.
Lettuce	3,204	Sprinkler, Row	0.3	Mar. 1	Sep. 30
Melons, Squash, Cucumbers	7,085	Sprinkler, Row	1.7	Mar. 1	Sep. 30
Misc. Deciduous Trees	8,199	Drip, Sprinkler, Row	5.3	Jan. 1	Dec. 31.
Misc. Field Crops	1,738	Sprinkler, Row	2.7	Mar. 1	Sep. 30
Misc. Hay/Groin	5,924	Sprinkler, Row	1.7	Mar. 1	Sep. 30
Misc. Subtropical Trees	361	Drip, Sprinkler, Row	5.0	Jan. 1	Dec. 31.
Misc. Vegetables	7,933	Sprinkler, Row	6.7	Mar. 1	Sep. 30
Nursery	6,158	Drip, Sprinkler, Row	4.0	Jan. 1	Dec. 31.
Oats	2,462	Sprinkler, Row	1.5	Mar. 1	Sep. 30
Olives	501	Drip, Sprinkler, Row	5.4	Jan. 1	Dec. 31.
Onions, Garlic	11,855	Sprinkler, Row	3.5	Mar. 1	Sep. 30
Pasture, Turf	14,825	Sprinkler, Row	4.9	Jan. 1	Dec. 31.
Peaches, Nectarines	5,717	Drip, Sprinkler, Row	5.3	Jan. 1	Dec. 31.
Pears	107	Drip, Sprinkler, Row	5.6	Jan. 1	Dec. 31.
Peas	174	Sprinkler, Row	1.5	Jan. 1	Dec. 31.
Peppers	2,822	Sprinkler, Row	2.1	Mar. 1	Sep. 30
Pistachios	47,335	Drip, Sprinkler, Row	5.4	Jan. 1	Dec. 31.
Plums, Prunes	2,641	Drip, Sprinkler, Row	5.4	Jan. 1	Dec. 31.
Potatoes	27,221	Sprinkler, Row	3.6	Mar. 1	Sep. 30
Rice	-	Sprinkler, Row	3.5	Mar. 1	Sep. 30
Safflower	4,207	Sprinkler, Row	2.6	Mar. 1	Sep. 30
Sorghum/Milo	2,286	Sprinkler, Row	2.5	Mar. 1	Sep. 30
Sudan Grass	3,272	Sprinkler, Row	2.2	Jan. 1	Dec. 31.
Sugar Beets	2,995	Sprinkler, Row	3.6	Mar. 1	Sep. 30
Tomatoes	7,991	Sprinkler, Row	2.6	Jan. 1	Dec. 31.
Turnips	29	Sprinkler, Row	3.4	Mar. 1	Sep. 30
Walnuts	1,680	Drip, Sprinkler, Row	4.6	Jan. 1	Dec. 31.
Wheat	70,264	Sprinkler, Row	2.2	Mar. 1	Sep. 30
Total Irrigated Acreage	835,361				

Footnotes:

1) Source of information from the 2001 Kern County Water Agency Water Supply Report.

Section B: Miscellaneous Diversion Information

Paragraph 1e Municipal⁴

Population		Maximum Month			Annual Use		
Period	Population (#)	Average Daily Use GPCD	Rate of Diversion (MGD) (CFS) ³		Average Daily Use GPCD	Acre-Foot Acre-Foot Per Capita ²	Total (Acre-Feet)
Present (2005)	92265	830	77	119	452	0.51	46,739
2010	148346	717	106	165	398	0.45	66,186
2015	163416	696	114	176	388	0.43	71,029
2020	168870	688	116	180	384	0.43	72,608
2025	172861	681	118	182	381	0.43	73,677

Footnotes:

- 1) Water supply projections and population information from published water information from 2005 Urban Water Management Plans
- 2) Based on average metropolitan water used for Kern County
- 3) Average daily water production per 2005 Kern County Water Agency, Improvement District No. 4 Report on Water Conditions..
- 4) Municipal water use calculations for Kern County Water Agency - Improvement District No. 4 and West Kern Water District.

Section B: Miscellaneous Diversion Information

Paragraph 2 Diversion and Distribution Method

2a. Diversion will be by gravity by means of concrete or steel control structures with measuring gates and weirs connected to culvert pipe and discharge structures.

2b. Diversion will be pumping from: No pumping in order to divert water from the Kern River.

2c. Conduit from diversion point to first lateral or to offstream storage reservoir:

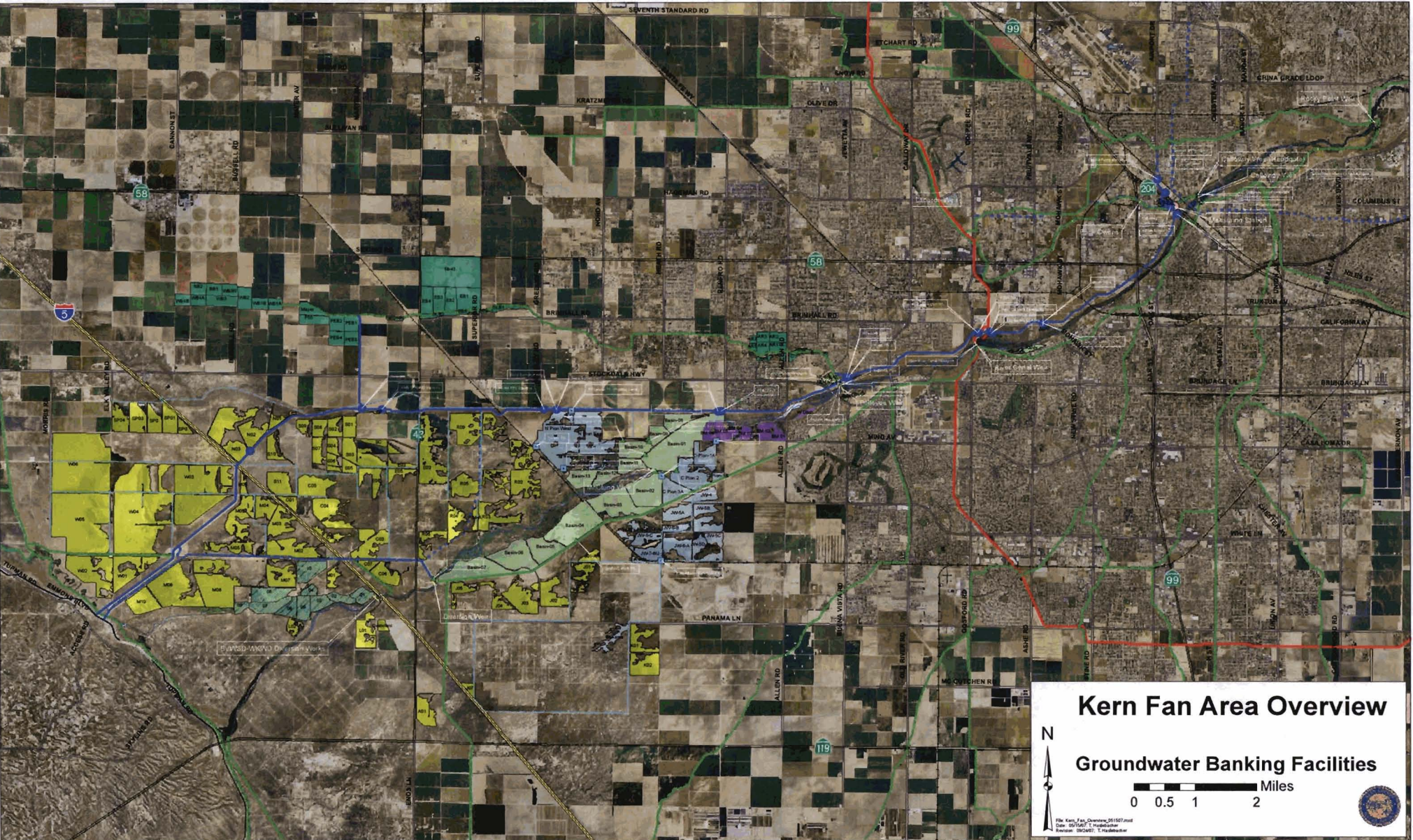
Conduit (pipe or channel)	Material (type of pipe or channel lining indicate if pipe is buried or not)	Cross-Section (pipe diameter, or ditch depth and top and bottom width) (Feet)	Length (Feet)	Total Lift or Fall (Feet) + or -		Capacity (CFS)
Cross Valley Canal	Concrete Lined	Trapezoid Shape Size Varies	90,000	100	+ or -	1300
Cross Valley Canal Extension	Earth Lined	Trapezoid Shape Size Varies	23,000	20	+ or -	300
Calloway Canal within Improvement District No. 4	Earth Lined	Trapezoid Shape Size Varies	38,000	20	-	1000
Kern River Canal	Concrete Lined	TW= 40' BW = 12'	50,000	23	-	1100
Other Diversion Structures (Pipe and Channel)	Corrugated Metal Pipe, Reinforced Concrete Pipe, High Density Polyethylene Pipe, Concrete Mortar Lined & Coated Pipe, Concrete Lined and Earth Lined	Varies	Varies	Varies	-	Varies

2d. Storage reservoirs:

Reservoir Name	Vertical height from downstream toe of slope to spillway level	Dam			Reservoir		Maximum Water Depth (feet)
		Construction Material	Length (feet)	Freeboard dam height above spillway crest (feet)	Surface area full (acres)	Capacity (acre-feet)	
Lake Isabella	185	Earthen	1,695	22	11,400	568,100	165

2e. Outlet pipe:

2f. If water will be stored and the reservoir is not a point of diversion, the maximum rate of diversion to off stream storage will be 3,200 cfs. Diversion to offstream storage will be made by gravity.



Kern Fan Area Overview

Groundwater Banking Facilities

0 0.5 1 2 Miles



File: Kern_Fan_Overview_011507.mxd
 Date: 02/28/07 7:16:00 AM
 Extension: 0024077_T_Hydrobunker