

Points of Diversion from the Kern River

Number	Name	CA Coordinates	40-acre Subdivision	Sec.	T	R	B&M	Max Flow Rate (cfs)	Pump or gravity	Maximum Annual Amount
1	Kern River Canal East	6236482 2320290	SW1/4 of NW1/4	33	29S	27E	MDB&M	900	G	657,000
2	Pioneer Canal Headworks	6224833 2316849	NE1/4 of NE1/4	1	30S	26E	MDB&M	350	G	255,500
3	COB Basin 2	6208689 2309292	NE1/4 of SE1/4	9	30S	26E	MDB&M	500	G	365,000
4	COB Basin 9	6208791 2311546	NE1/4 of NE1/4	9	30S	26E	MDB&M	600	G	438,000
5	COB Basin 10	6207626 2310618	NW1/4 of NE1/4	9	30S	26E	MDB&M	150	G	109,500
6	Kern Water Bank Canal	6189531 2300058	SE1/4 of NW1/4	24	30S	25E	MDB&M	800	G	584,000
7	Kern River Canal West	6189846 2299733	SE1/4 of NW1/4	24	30S	25E	MDB&M	300	G	219,000
8	Main Canal	6185782 2298636	NW1/4 of SE 1/4	23	30S	25E	MDB&M	250	G	182,500
9	KWB Basin L1	6184837 2298426	NE1/4 of SW1/4	23	30S	25E	MDB&M	40	G	29,200
10	West Kern Basin 1	6184601 2298500	NE1/4 of SW1/4	23	30S	25E	MDB&M	200	G	146,000
11	Kern River - CA Aqueduct Intertie	6170656 2286182	NE1/4 of NE1/4	5	30S	25E	MDB&M	3,500	G	2,555,000

Points of Rediversion to the California Aqueduct

Number	Mile Post	Pool No.	Water Agency (Name)	Repayment Reach No.	Direction	Design Flow cfs	Barrel Diameter (in)	Pump or Gravity	Min Water Surface Elev (ft)	Flowmeter Type or status if turnout nonoperational
12	238.19	28	KCWA (Kern Water Bank Authority)	6160967 2296507	12E	Lt	750	132 G	296.6	Acoustic

Points of Rediversion from the California Aqueduct

Number	Mile Post	Pool No.	Water Agency (Name)	Repayment Reach No.	Direction	Design Flow cfs	Barrel Diameter (in)	Pump or Gravity	Min Water Surface Elev (ft)	Flowmeter Type or status if turnout nonoperational
13	172.66	22	EWSID/TLBWSD/Co. of Kings	5978681 2558085	8C	Lt	320	2 @ 6' x 6' G	310.9	Parshall Flume
14	175.18	22	DRWD 1	5984933 2546844	8D	Lt	67	48 G	310.9	Venturi
15	177.54	22	DRWD 1-B	5989644 2535484	8D	Lt	25	30 G	309.5	Venturi
16	180.64	22	TLBWSD C	5995388 2520501	8D	Rt	0.3	4 P	310.5	Propeller
17	180.65	22	DRWD 1A	5995394 2520488	8D	Lt	36	36 P	310.5	Venturi
18	182.99	22	DRWD 2	6000612 2509346	8D	Lt	193	6' x 6' G	310.6	Parshall Flume
19	183.00	22	TLBWSD B	6000613 2509341	8D	Lt	450	@ 6' x 6' G	310.6	Parshall Flume
20	184.63	22	Coastal Branch	6001585 2501021	31A	Rt	450	Canal G		
21	184.78	22	DRWD 3	6001837 2500279	8D	Lt	170	6' x 6' G	309.0	Parshall Flume
22	189.69	23	KCWA (Lost Hills 1)	6009377 2476888	9	Rt	225	6' x 6' P	308.1	Venturi
23	191.18	23	KCWA (Lost Hills 2)	6015700 2472304	9	Lt	115	2 @ 42 G	308.1	Venturi
24	194.22	23	KCWA (Lost Hills 3)	6024425 2459076	9	Lt	60	42 G	307.8	Venturi
25	196.40	23	KCWA (Berrenda Mesa 2)	6030255 2449950	9	Rt	60	7' x 7' P	306.8	Venturi
26	196.75	23	KCWA (Lost Hills 4)	6031780 2448880	9	Lt	100	2 @ 36 G	307.2	Venturi
27	201.24	24	KCWA (Lost Hills 7A)	6046867 2431468	10A	Rt	75	54 P	305.7	Parshall Flume
28	201.24	24	KCWA (Lost Hills 7B)	6046861 2431475	10A	Rt	1.8	12 P	305.7	Magnetic
29	202.05	24	KCWA (Lost Hills 5)	6049140 2427949	10A	Lt	400	4 @ 48 P&G	305.7	Parshall Flume
30	204.69	24	KCWA (Lost Hills 6)	6056154 2416270	10A	Lt	0.5	8 P	305.7	Not In Use
31	205.26	24	KCWA (Lost Hills 8)	6057709 2413747	10A	0.3	4	4 P	305.7	Propeller
32	208.85	25	KCWA (Belridge 1)	6064730 2396897	10A	Lt	15	24 G	303.5	Stub
33	209.71	25	KCWA (Belridge 1A)	6065858 2393475	10A	Lt	100	54 G	303.5	Venturi

34	209.78	25	KCWA (Buena Vista 1A, 1B)	6065997	2393145	10A	Lt	290	7' x 7' G	303.5	Parshall/Venturi
35	209.78	25	KCWA (Semitropic)	6065997	2393145	10A	Lt	580!	@ 7' x 7' G	303.5	Parshall Flume
36	209.80	25	KCWA (Semitropic Penstock)	6066042	2393030	10A	Lt	300!	@ 6' x 6' G	303.5	Acoustic
37	210.75	25	KCWA (Belridge 2)	6066181	2390737	11B	Lt	29	30 G	303.5	Stub
38	214.11	25	KCWA (Belridge 3)	6071400	2371785	11B	Lt	60	36 G	303.3	Parshall Flume
39	216.62	25	KCWA (Belridge 4)	6074421	2359048	11B	Lt	40	36 G	302.7	Stub
40	217.13	25	KCWA (Belridge 5)	6075665	2356484	11B	Rt	610!	@ 7' x 7' P	302.6	Venturi
41	219.58	26	KCWA (Belridge 6)	6082362	2345463	12D	Lt	20	24 G	301.4	Stub
42	224.07	26	KCWA (West Kern 3, La Paloma)	6100996	2332271	12D	Rt	15	20 P	301.4	Venturi
43	230.37	27	KCWA (Buena Vista 6/Elk Hills)	6126906	2315427	12E	Lt	80	54 G	299.3	Venturi
44	235.75	28	KCWA (Buena Vista 2)	6150346	2302769	12E	Lt	250	7' x 7' G	297.9	Parshall Flume
45	238.04	28	KCWA (Cross Valley Canal/H. Miller)	6160285	2296900	12E	Lt	800!	@ 7' x 7' G	296.0	Acoustic
46	238.06	28	KCWA (Rosedale-Rio Bravo)	6160382	2296843	12E	Lt	150	6' x 6' G	297.3	Stub
47	240.20	29	KCWA (West Kern Turnin)	6167720	2289033	13B	Lt	20	18 G		Propeller
48	241.17	29	KCWA (West Kern 1)	6170978	2285322	13B	Rt	50	48 G	296.5	Stub
49	242.65	29	KCWA (Buena Vista 7)	6172939	2277955	13B	Lt	300	3 @ 42 G	295.8	Acoustic
50	242.85	29	KCWA (Buena Vista 5/Kern-Cawelo)	6172406	2277101	13B	Lt	250	7' x 7' G	296.2	Venturi
51	243.09	29	KCWA (Buena Vista 3)	6171290	2276476	13B	Lt	125	60 G	296.1	Venturi
52	249.85	30	KCWA (Buena Vista 4)	6160021	2253279	14A	Lt	120	42 G	294.6	Venturi
53	254.47	31	KCWA (West Kern 2)	6150155	2233800	14A	Rt	50	48 P	498.7	Venturi
54	256.11	31	KCWA (Teerink-Maricopa 2)	6151790	2225780	14A	Lt	35	36 G	498.3	Venturi
55	258.61	32	KCWA (Teerink-Maricopa 3)	6163127	2222247	14A	Lt	75	54 P&G	497.7	Venturi
56	260.44	32	KCWA (Teerink-Maricopa 4)	6173129	2221257	14A	Lt	135	2 @ 48 P&G	496.8	Venturi
57	264.42	33	KCWA (Teerink-Maricopa 5)	6193228	2215943	14B	Lt	195	2 @ 60 P&G	495.2	Venturi
58	266.91	33	KCWA (Teerink-Maricopa 6)	6206228	2215823	14B	Rt	40	52 P	494.6	Venturi
59	270.24	34	KCWA (Teerink-Maricopa 7)	6223057	2212426	14B	Lt	155	2 @ 54 P&G	493.2	Venturi
60	272.39	35	KCWA (Teerink-Maricopa 8)	6233982	2209800	14C	Lt	110	2 @ 48 P&G	492.0	Venturi
61	276.09	35	KCWA (Teerink-Maricopa 9)	6250027	2200415	14C	Lt	65	48 P&G	491.5	Venturi
62	277.30	35	KCWA (Arvin Edison WSD)	6255765	2201482	14C	Lt	200	84 G	492.0	Acoustic
63	279.02	36	KCWA (Teerink-Maricopa 9A)	6263535	2197143	15A	Lt	30	30 P&G	723.8	Venturi
64	280.06	36	KCWA (Teerink-Maricopa 10)	6268317	2194766	15A	Lt	150	8, 5 @ 30 P	723.6	Venturi
65	282.06	37	KCWA (Teerink-Maricopa 11)	6264587	2186192	16A	Lt	36	36 P&G	1241.4	Venturi
66	285.01	38	KCWA (Teerink-Maricopa 12)	6276093	2177725	16A	Lt	65	54 P&G	1240.0	Venturi
67	286.39	38	KCWA (Teerink-Maricopa 13A)	6283398	2176051	16A	Lt	11	20 G	1240.3	Venturi
68	287.06	38	KCWA (Teerink-Maricopa 13)	6286841	2174713	16A	Lt	80	48 P&G	1240.0	Stub
69	287.62	39	KCWA (Teerink-Maricopa 13B)	6290937	2172124	16A	Lt	10	30 G	1239.4	Venturi
70	291.26	40	KCWA (Teerink-Maricopa 14)	6305130	2164776	16A	Lt	70	54 G	1238.7	Venturi
			KCWA (Teerink-Maricopa 15,								
71	293.07	40	Tehachapi-Cummings)	6313540	2167353	16A	Lt	50	36 G	1238.1	Venturi

Points of Rediversion from the Cross Valley Canal

Number	Mile Post	Pool No.	Water Agency (Name)	Repayment Reach No.	Direction	Design Flow cfs	Barrel Diameter (in)	Pump or Gravity	Min Water Surface Elev (ft)	Flowmeter	
										Type or status if nonoperational	nonoperational
72	NA	NA	Cawelo Water District Station A	6252177	2337447	NA	160 48"	P	NA	Venturi	

Aliso Water District

All or a portion of the following:

MERIDIAN	TOWNSHIP	RANGE	SECTION
MDB&M	12S	15E	27
MDB&M	12S	15E	28
MDB&M	12S	15E	29
MDB&M	12S	15E	30
MDB&M	12S	15E	31
MDB&M	12S	15E	32
MDB&M	12S	15E	33
MDB&M	12S	15E	34
MDB&M	12S	15E	35
MDB&M	13S	15E	2
MDB&M	13S	15E	3
MDB&M	13S	15E	4
MDB&M	13S	15E	5
MDB&M	13S	15E	7
MDB&M	13S	15E	10
MDB&M	13S	15E	11
MDB&M	13S	15E	14
MDB&M	13S	15E	15
MDB&M	13S	15E	16
MDB&M	13S	15E	17
MDB&M	13S	15E	20
MDB&M	13S	15E	21
MDB&M	13S	15E	22
MDB&M	13S	15E	23
MDB&M	13S	15E	24
MDB&M	13S	15E	25
MDB&M	13S	15E	26
MDB&M	13S	15E	27

Belridge Water Storage District

All or a portion of the following:

MERIDIAN	TOWNSHIP	RANGE	SECTION
MDB&M	26S	20E	33
MDB&M	27S	19E	1
MDB&M	27S	19E	2
MDB&M	27S	19E	12
MDB&M	27S	19E	13
MDB&M	27S	20E	1
MDB&M	27S	20E	2
MDB&M	27S	20E	3
MDB&M	27S	20E	4
MDB&M	27S	20E	5
MDB&M	27S	20E	6
MDB&M	27S	20E	7
MDB&M	27S	20E	8

MDB&M	27S	20E	9
MDB&M	27S	20E	10
MDB&M	27S	20E	11
MDB&M	27S	20E	12
MDB&M	27S	20E	13
MDB&M	27S	20E	14
MDB&M	27S	20E	15
MDB&M	27S	20E	16
MDB&M	27S	20E	17
MDB&M	27S	20E	18
MDB&M	27S	20E	20
MDB&M	27S	20E	21
MDB&M	27S	20E	22
MDB&M	27S	20E	23
MDB&M	27S	20E	24
MDB&M	27S	20E	25
MDB&M	27S	20E	26
MDB&M	27S	20E	27
MDB&M	27S	20E	28
MDB&M	27S	20E	29
MDB&M	27S	20E	32
MDB&M	27S	20E	33
MDB&M	27S	20E	34
MDB&M	27S	20E	35
MDB&M	27S	20E	36
MDB&M	27S	21E	1
MDB&M	27S	21E	2
MDB&M	27S	21E	3
MDB&M	27S	21E	6
MDB&M	27S	21E	7
MDB&M	27S	21E	8
MDB&M	27S	21E	9
MDB&M	27S	21E	10
MDB&M	27S	21E	11
MDB&M	27S	21E	12
MDB&M	27S	21E	13
MDB&M	27S	21E	14
MDB&M	27S	21E	15
MDB&M	27S	21E	16
MDB&M	27S	21E	17
MDB&M	27S	21E	18
MDB&M	27S	21E	19
MDB&M	27S	21E	20
MDB&M	27S	21E	21
MDB&M	27S	21E	22
MDB&M	27S	21E	23
MDB&M	27S	21E	24
MDB&M	27S	21E	25
MDB&M	27S	21E	26
MDB&M	27S	21E	27
MDB&M	27S	21E	28
MDB&M	27S	21E	29

MDB&M	27S	21E	30
MDB&M	27S	21E	31
MDB&M	27S	21E	32
MDB&M	27S	21E	33
MDB&M	27S	21E	34
MDB&M	27S	21E	35
MDB&M	27S	21E	36
MDB&M	27S	22E	30
MDB&M	27S	22E	31
MDB&M	28S	20E	1
MDB&M	28S	20E	2
MDB&M	28S	20E	3
MDB&M	28S	20E	4
MDB&M	28S	20E	5
MDB&M	28S	20E	6
MDB&M	28S	20E	7
MDB&M	28S	20E	10
MDB&M	28S	20E	11
MDB&M	28S	20E	12
MDB&M	28S	20E	13
MDB&M	28S	20E	14
MDB&M	28S	20E	15
MDB&M	28S	20E	22
MDB&M	28S	20E	23
MDB&M	28S	20E	24
MDB&M	28S	20E	36
MDB&M	28S	21E	1
MDB&M	28S	21E	2
MDB&M	28S	21E	3
MDB&M	28S	21E	4
MDB&M	28S	21E	5
MDB&M	28S	21E	6
MDB&M	28S	21E	7
MDB&M	28S	21E	8
MDB&M	28S	21E	9
MDB&M	28S	21E	10
MDB&M	28S	21E	11
MDB&M	28S	21E	12
MDB&M	28S	21E	13
MDB&M	28S	21E	14
MDB&M	28S	21E	15
MDB&M	28S	21E	16
MDB&M	28S	21E	17
MDB&M	28S	21E	18
MDB&M	28S	21E	19
MDB&M	28S	21E	20
MDB&M	28S	21E	21
MDB&M	28S	21E	22
MDB&M	28S	21E	23
MDB&M	28S	21E	24
MDB&M	28S	21E	25
MDB&M	28S	21E	26

MDB&M	28S	21E	27
MDB&M	28S	21E	28
MDB&M	28S	21E	29
MDB&M	28S	21E	30
MDB&M	28S	21E	31
MDB&M	28S	21E	32
MDB&M	28S	21E	33
MDB&M	28S	21E	34
MDB&M	28S	21E	35
MDB&M	28S	21E	36
MDB&M	28S	22E	6
MDB&M	28S	22E	7
MDB&M	28S	22E	17
MDB&M	28S	22E	18
MDB&M	28S	22E	19
MDB&M	28S	22E	20
MDB&M	28S	22E	29
MDB&M	28S	22E	30
MDB&M	28S	22E	31
MDB&M	28S	22E	32
MDB&M	29S	21E	1
MDB&M	29S	21E	2
MDB&M	29S	21E	3
MDB&M	29S	21E	4
MDB&M	29S	21E	5
MDB&M	29S	21E	6
MDB&M	29S	21E	8
MDB&M	29S	21E	9
MDB&M	29S	21E	10
MDB&M	29S	21E	11
MDB&M	29S	21E	12
MDB&M	29S	21E	13
MDB&M	29S	21E	14
MDB&M	29S	21E	15
MDB&M	29S	21E	16
MDB&M	29S	21E	23
MDB&M	29S	21E	24
MDB&M	29S	22E	2
MDB&M	29S	22E	3
MDB&M	29S	22E	4
MDB&M	29S	22E	5
MDB&M	29S	22E	6
MDB&M	29S	22E	7
MDB&M	29S	22E	8
MDB&M	29S	22E	9
MDB&M	29S	22E	11
MDB&M	29S	22E	18
MDB&M	29S	22E	20

and a portion of the Kern River Channel / Jerry Slough / Goose Lake Bed area otherwise not listed

Berrenda Mesa Water District

All or a portion of the following:

MERIDIAN	TOWNSHIP	RANGE	SECTION
MDB&M	25S	18E	28
MDB&M	25S	18E	34
MDB&M	25S	19E	20
MDB&M	25S	19E	21
MDB&M	25S	19E	27
MDB&M	25S	19E	28
MDB&M	25S	19E	29
MDB&M	25S	19E	30
MDB&M	25S	19E	31
MDB&M	25S	19E	32
MDB&M	25S	19E	33
MDB&M	25S	19E	34
MDB&M	26S	17E	1
MDB&M	26S	17E	2
MDB&M	26S	17E	3
MDB&M	26S	17E	10
MDB&M	26S	17E	11
MDB&M	26S	17E	12
MDB&M	26S	17E	13
MDB&M	26S	17E	14
MDB&M	26S	17E	24
MDB&M	26S	18E	1
MDB&M	26S	18E	3
MDB&M	26S	18E	4
MDB&M	26S	18E	5
MDB&M	26S	18E	7
MDB&M	26S	18E	8
MDB&M	26S	18E	9
MDB&M	26S	18E	10
MDB&M	26S	18E	11
MDB&M	26S	18E	12
MDB&M	26S	18E	13
MDB&M	26S	18E	14
MDB&M	26S	18E	15
MDB&M	26S	18E	16
MDB&M	26S	18E	17
MDB&M	26S	18E	18
MDB&M	26S	18E	19
MDB&M	26S	18E	20
MDB&M	26S	18E	21
MDB&M	26S	18E	22
MDB&M	26S	18E	23
MDB&M	26S	18E	24
MDB&M	26S	18E	25
MDB&M	26S	18E	26
MDB&M	26S	18E	27
MDB&M	26S	18E	35
MDB&M	26S	18E	36

MDB&M	26S	19E	2
MDB&M	26S	19E	3
MDB&M	26S	19E	4
MDB&M	26S	19E	5
MDB&M	26S	19E	6
MDB&M	26S	19E	7
MDB&M	26S	19E	8
MDB&M	26S	19E	9
MDB&M	26S	19E	10
MDB&M	26S	19E	11
MDB&M	26S	19E	12
MDB&M	26S	19E	13
MDB&M	26S	19E	14
MDB&M	26S	19E	15
MDB&M	26S	19E	16
MDB&M	26S	19E	17
MDB&M	26S	19E	18
MDB&M	26S	19E	19
MDB&M	26S	19E	20
MDB&M	26S	19E	21
MDB&M	26S	19E	22
MDB&M	26S	19E	23
MDB&M	26S	19E	24
MDB&M	26S	19E	26
MDB&M	26S	19E	27
MDB&M	26S	19E	28
MDB&M	26S	19E	29
MDB&M	26S	19E	30
MDB&M	26S	19E	31
MDB&M	26S	19E	32
MDB&M	26S	19E	33
MDB&M	26S	19E	34
MDB&M	26S	19E	35
MDB&M	26S	19E	36
MDB&M	26S	20E	3
MDB&M	26S	20E	4
MDB&M	26S	20E	5
MDB&M	26S	20E	6
MDB&M	26S	20E	7
MDB&M	26S	20E	8
MDB&M	26S	20E	9
MDB&M	26S	20E	10
MDB&M	26S	20E	16
MDB&M	26S	20E	17
MDB&M	26S	20E	18
MDB&M	26S	20E	19
MDB&M	26S	20E	20
MDB&M	26S	20E	21
MDB&M	26S	20E	22
MDB&M	26S	20E	23
MDB&M	26S	20E	27
MDB&M	26S	20E	28

MDB&M	26S	20E	29
MDB&M	26S	20E	30
MDB&M	26S	20E	31
MDB&M	26S	20E	32
MDB&M	26S	20E	33
MDB&M	26S	20E	34
MDB&M	27S	19E	2
MDB&M	27S	19E	3
MDB&M	27S	19E	4
MDB&M	27S	19E	5
MDB&M	27S	19E	6
MDB&M	27S	19E	7
MDB&M	27S	19E	27
MDB&M	27S	19E	28
MDB&M	27S	20E	6

Cawelo Water District

All or a portion of the following:

MERIDIAN	TOWNSHIP	RANGE	SECTION
MDB&M	26S	26E	12
MDB&M	26S	26E	13
MDB&M	26S	26E	14
MDB&M	26S	26E	22
MDB&M	26S	26E	23
MDB&M	26S	26E	24
MDB&M	26S	26E	25
MDB&M	26S	26E	26
MDB&M	26S	26E	27
MDB&M	26S	26E	34
MDB&M	26S	26E	35
MDB&M	26S	26E	36
MDB&M	26S	27E	16
MDB&M	26S	27E	17
MDB&M	26S	27E	18
MDB&M	26S	27E	19
MDB&M	26S	27E	20
MDB&M	26S	27E	29
MDB&M	26S	27E	30
MDB&M	26S	27E	31
MDB&M	26S	27E	32
MDB&M	27S	26E	1
MDB&M	27S	26E	2
MDB&M	27S	26E	3
MDB&M	27S	26E	6
MDB&M	27S	26E	7
MDB&M	27S	26E	8
MDB&M	27S	26E	9
MDB&M	27S	26E	10
MDB&M	27S	26E	11
MDB&M	27S	26E	12

MDB&M	27S	26E	13
MDB&M	27S	26E	14
MDB&M	27S	26E	15
MDB&M	27S	26E	16
MDB&M	27S	26E	17
MDB&M	27S	26E	18
MDB&M	27S	26E	20
MDB&M	27S	26E	21
MDB&M	27S	26E	22
MDB&M	27S	26E	23
MDB&M	27S	26E	24
MDB&M	27S	26E	25
MDB&M	27S	26E	26
MDB&M	27S	26E	27
MDB&M	27S	26E	28
MDB&M	27S	26E	29
MDB&M	27S	26E	32
MDB&M	27S	26E	33
MDB&M	27S	26E	34
MDB&M	27S	26E	35
MDB&M	27S	26E	36
MDB&M	27S	27E	5
MDB&M	27S	27E	6
MDB&M	27S	27E	7
MDB&M	27S	27E	8
MDB&M	27S	27E	17
MDB&M	27S	27E	18
MDB&M	27S	27E	19
MDB&M	27S	27E	30
MDB&M	27S	27E	31
MDB&M	28S	26E	1
MDB&M	28S	26E	2
MDB&M	28S	26E	3
MDB&M	28S	26E	4
MDB&M	28S	26E	5
MDB&M	28S	26E	9
MDB&M	28S	26E	10
MDB&M	28S	26E	11
MDB&M	28S	26E	12
MDB&M	28S	26E	13
MDB&M	28S	26E	14
MDB&M	28S	26E	24
MDB&M	28S	27E	6
MDB&M	28S	27E	7
MDB&M	28S	27E	17
MDB&M	28S	27E	18
MDB&M	28S	27E	19
MDB&M	28S	27E	20
MDB&M	28S	27E	28
MDB&M	28S	27E	29
MDB&M	28S	27E	30
MDB&M	28S	27E	31

MDB&M	28S	27E	32
MDB&M	28S	27E	33
MDB&M	28S	27E	34
MDB&M	29S	27E	4
MDB&M	29S	27E	7
MDB&M	29S	27E	8

Columbia Canal Water District

All or a portion of the following:

MERIDIAN	TOWNSHIP	RANGE	SECTION
MDB&M	11S	14E	19
MDB&M	11S	14E	20
MDB&M	11S	14E	29
MDB&M	11S	14E	30
MDB&M	11S	14E	32
MDB&M	11S	14E	33
MDB&M	12S	14E	4
MDB&M	12S	14E	5
MDB&M	12S	14E	8
MDB&M	12S	14E	9
MDB&M	12S	14E	14
MDB&M	12S	14E	15
MDB&M	12S	14E	16
MDB&M	12S	14E	17
MDB&M	12S	14E	21
MDB&M	12S	14E	22
MDB&M	12S	14E	23
MDB&M	12S	14E	24
MDB&M	12S	14E	25
MDB&M	12S	14E	26
MDB&M	12S	14E	27
MDB&M	12S	14E	28
MDB&M	12S	14E	33
MDB&M	12S	14E	34
MDB&M	12S	14E	35
MDB&M	12S	14E	36
MDB&M	12S	15E	30
MDB&M	12S	15E	31
MDB&M	12S	15E	32
MDB&M	13S	14E	1
MDB&M	13S	14E	2
MDB&M	13S	15E	4
MDB&M	13S	15E	5
MDB&M	13S	15E	6
MDB&M	13S	15E	7
MDB&M	13S	15E	8
MDB&M	13S	15E	9
MDB&M	13S	15E	10
MDB&M	13S	15E	15
MDB&M	13S	15E	16

MDB&M	13S	15E	17
MDB&M	13S	15E	18
MDB&M	13S	15E	19
MDB&M	13S	15E	20
MDB&M	13S	15E	21
MDB&M	13S	15E	28
MDB&M	13S	15E	29

Dudley Ridge Water District

All or a portion of the following:

MERIDIAN	TOWNSHIP	RANGE	SECTION
MDB&M	22S	19E	17
MDB&M	22S	19E	18
MDB&M	22S	19E	20
MDB&M	22S	19E	28
MDB&M	22S	19E	29
MDB&M	22S	19E	32
MDB&M	22S	19E	33
MDB&M	23S	19E	3
MDB&M	23S	19E	4
MDB&M	23S	19E	5
MDB&M	23S	19E	8
MDB&M	23S	19E	9
MDB&M	23S	19E	10
MDB&M	23S	19E	14
MDB&M	23S	19E	15
MDB&M	23S	19E	16
MDB&M	23S	19E	22
MDB&M	23S	19E	23
MDB&M	23S	19E	24
MDB&M	23S	19E	25
MDB&M	23S	19E	26
MDB&M	23S	19E	27
MDB&M	23S	19E	34
MDB&M	23S	19E	35
MDB&M	23S	19E	36
MDB&M	23S	20E	17
MDB&M	23S	20E	18
MDB&M	23S	20E	19
MDB&M	23S	20E	20
MDB&M	23S	20E	21
MDB&M	23S	20E	28
MDB&M	23S	20E	29
MDB&M	23S	20E	30
MDB&M	23S	20E	31
MDB&M	23S	20E	32
MDB&M	23S	20E	33
MDB&M	24S	19E	1
MDB&M	24S	19E	2
MDB&M	24S	19E	11

MDB&M	24S	19E	12
MDB&M	24S	19E	13
MDB&M	24S	19E	14
MDB&M	24S	19E	23
MDB&M	24S	19E	24
MDB&M	24S	19E	25
MDB&M	24S	19E	26
MDB&M	24S	19E	36
MDB&M	24S	20E	4
MDB&M	24S	20E	5
MDB&M	24S	20E	6
MDB&M	24S	20E	7
MDB&M	24S	20E	8
MDB&M	24S	20E	9
MDB&M	24S	20E	16
MDB&M	24S	20E	17
MDB&M	24S	20E	18
MDB&M	24S	20E	19
MDB&M	24S	20E	20
MDB&M	24S	20E	28
MDB&M	24S	20E	29
MDB&M	24S	20E	30
MDB&M	24S	20E	31
MDB&M	24S	20E	32
MDB&M	24S	20E	33
MDB&M	24S	20E	34

Kern - Tulare Water District

All or a portion of the following:

MERIDIAN	TOWNSHIP	RANGE	SECTION	
MDB&M	24S	26E	12	24/26-12
MDB&M	24S	27E	6	24/27-06
MDB&M	24S	27E	7	24/27-07
MDB&M	24S	27E	8	24/27-08
MDB&M	24S	27E	15	24/27-15
MDB&M	24S	27E	17	24/27-17
MDB&M	24S	27E	18	24/27-18
MDB&M	24S	27E	19	24/27-19
MDB&M	24S	27E	20	24/27-20
MDB&M	24S	27E	22	24/27-22
MDB&M	24S	27E	27	24/27-27
MDB&M	24S	27E	28	24/27-28
MDB&M	24S	27E	29	24/27-29
MDB&M	24S	27E	30	24/27-30
MDB&M	24S	27E	31	24/27-31
MDB&M	24S	27E	32	24/27-32
MDB&M	24S	27E	33	24/27-33
MDB&M	24S	27E	34	24/27-34
MDB&M	24S	27E	35	24/27-35
MDB&M	25S	26E	1	25/26-01

MDB&M	25S	26E	12	25/26-12
MDB&M	25S	26E	14	25/26-14
MDB&M	25S	26E	24	25/26-24
MDB&M	25S	26E	25	25/26-25
MDB&M	25S	27E	3	25/27-03
MDB&M	25S	27E	4	25/27-04
MDB&M	25S	27E	5	25/27-05
MDB&M	25S	27E	15	25/27-15
MDB&M	25S	27E	16	25/27-16
MDB&M	25S	27E	19	25/27-19
MDB&M	25S	27E	20	25/27-20
MDB&M	25S	27E	21	25/27-21
MDB&M	25S	27E	22	25/27-22
MDB&M	25S	27E	23	25/27-23
MDB&M	25S	27E	27	25/27-27
MDB&M	25S	27E	28	25/27-28
MDB&M	25S	27E	29	25/27-29
MDB&M	25S	27E	30	25/27-30
MDB&M	25S	27E	31	25/27-31
MDB&M	25S	27E	32	25/27-32
MDB&M	25S	27E	33	25/27-33
MDB&M	25S	27E	34	25/27-34
MDB&M	26S	26E	1	26/26-01
MDB&M	26S	27E	3	26/27-03
MDB&M	26S	27E	4	26/27-04
MDB&M	26S	27E	5	26/27-05
MDB&M	26S	27E	6	26/27-06
MDB&M	26S	27E	7	26/27-07
MDB&M	26S	27E	8	26/27-08
MDB&M	26S	27E	16	26/27-16
MDB&M	26S	27E	32	26/27-32
MDB&M	27S	27E	5	27/27-05

Lost Hills Water District

All or a portion of the following:

MERIDIAN	TOWNSHIP	RANGE	SECTION
MDB&M	25S	19E	1
MDB&M	25S	19E	12
MDB&M	25S	19E	13
MDB&M	25S	19E	14
MDB&M	25S	19E	15
MDB&M	25S	19E	22
MDB&M	25S	19E	23
MDB&M	25S	19E	24
MDB&M	25S	19E	25
MDB&M	25S	19E	26
MDB&M	25S	19E	36
MDB&M	25S	20E	1
MDB&M	25S	20E	2
MDB&M	25S	20E	3

MDB&M	25S	20E	4
MDB&M	25S	20E	5
MDB&M	25S	20E	6
MDB&M	25S	20E	7
MDB&M	25S	20E	8
MDB&M	25S	20E	9
MDB&M	25S	20E	10
MDB&M	25S	20E	11
MDB&M	25S	20E	12
MDB&M	25S	20E	13
MDB&M	25S	20E	14
MDB&M	25S	20E	15
MDB&M	25S	20E	16
MDB&M	25S	20E	17
MDB&M	25S	20E	18
MDB&M	25S	20E	19
MDB&M	25S	20E	20
MDB&M	25S	20E	21
MDB&M	25S	20E	22
MDB&M	25S	20E	23
MDB&M	25S	20E	24
MDB&M	25S	20E	25
MDB&M	25S	20E	26
MDB&M	25S	20E	27
MDB&M	25S	20E	28
MDB&M	25S	20E	29
MDB&M	25S	20E	30
MDB&M	25S	20E	31
MDB&M	25S	20E	32
MDB&M	25S	20E	34
MDB&M	25S	20E	35
MDB&M	25S	20E	36
MDB&M	25S	21E	1
MDB&M	25S	21E	2
MDB&M	25S	21E	3
MDB&M	25S	21E	4
MDB&M	25S	21E	5
MDB&M	25S	21E	6
MDB&M	25S	21E	7
MDB&M	25S	21E	8
MDB&M	25S	21E	9
MDB&M	25S	21E	10
MDB&M	25S	21E	11
MDB&M	25S	21E	12
MDB&M	25S	21E	13
MDB&M	25S	21E	14
MDB&M	25S	21E	15
MDB&M	25S	21E	16
MDB&M	25S	21E	17
MDB&M	25S	21E	18
MDB&M	25S	21E	19
MDB&M	25S	21E	20

MDB&M	25S	21E	21
MDB&M	25S	21E	22
MDB&M	25S	21E	23
MDB&M	25S	21E	24
MDB&M	25S	21E	25
MDB&M	25S	21E	26
MDB&M	25S	21E	27
MDB&M	25S	21E	28
MDB&M	25S	21E	29
MDB&M	25S	21E	30
MDB&M	25S	21E	31
MDB&M	25S	21E	32
MDB&M	25S	21E	33
MDB&M	25S	21E	34
MDB&M	25S	21E	35
MDB&M	25S	22E	6
MDB&M	25S	22E	7
MDB&M	25S	22E	18
MDB&M	25S	22E	19
MDB&M	26S	19E	1
MDB&M	26S	19E	12
MDB&M	26S	20E	1
MDB&M	26S	20E	2
MDB&M	26S	20E	3
MDB&M	26S	20E	4
MDB&M	26S	20E	6
MDB&M	26S	20E	7
MDB&M	26S	20E	9
MDB&M	26S	20E	10
MDB&M	26S	20E	11
MDB&M	26S	20E	12
MDB&M	26S	20E	13
MDB&M	26S	20E	14
MDB&M	26S	20E	15
MDB&M	26S	20E	23
MDB&M	26S	20E	25
MDB&M	26S	20E	26
MDB&M	26S	20E	27
MDB&M	26S	20E	36
MDB&M	26S	21E	2
MDB&M	26S	21E	3
MDB&M	26S	21E	4
MDB&M	26S	21E	5
MDB&M	26S	21E	6
MDB&M	26S	21E	7
MDB&M	26S	21E	8
MDB&M	26S	21E	9
MDB&M	26S	21E	10
MDB&M	26S	21E	11
MDB&M	26S	21E	14
MDB&M	26S	21E	15
MDB&M	26S	21E	16

MDB&M	26S	21E	17
MDB&M	26S	21E	18
MDB&M	26S	21E	20
MDB&M	26S	21E	21
MDB&M	26S	21E	22
MDB&M	26S	21E	23
MDB&M	26S	21E	26
MDB&M	26S	21E	27
MDB&M	26S	21E	28
MDB&M	26S	21E	30
MDB&M	26S	21E	32
MDB&M	26S	21E	33
MDB&M	26S	21E	34
MDB&M	26S	21E	35
MDB&M	27S	21E	5

Madera Irrigation District

All or a portion of the following:

MERIDIAN	TOWNSHIP	RANGE	SECTION
MDB&M	9S	17E	26
MDB&M	9S	17E	27
MDB&M	9S	17E	34
MDB&M	9S	17E	35
MDB&M	9S	17E	36
MDB&M	9S	18E	18
MDB&M	9S	18E	19
MDB&M	10S	16E	11
MDB&M	10S	16E	12
MDB&M	10S	16E	13
MDB&M	10S	16E	14
MDB&M	10S	16E	15
MDB&M	10S	16E	16
MDB&M	10S	16E	21
MDB&M	10S	16E	22
MDB&M	10S	16E	23
MDB&M	10S	16E	24
MDB&M	10S	16E	25
MDB&M	10S	16E	26
MDB&M	10S	16E	27
MDB&M	10S	16E	28
MDB&M	10S	16E	32
MDB&M	10S	16E	33
MDB&M	10S	16E	34
MDB&M	10S	16E	35
MDB&M	10S	16E	36
MDB&M	10S	17E	1
MDB&M	10S	17E	2
MDB&M	10S	17E	3
MDB&M	10S	17E	4
MDB&M	10S	17E	5

MDB&M	10S	17E	7
MDB&M	10S	17E	8
MDB&M	10S	17E	13
MDB&M	10S	17E	14
MDB&M	10S	17E	17
MDB&M	10S	17E	18
MDB&M	10S	17E	19
MDB&M	10S	17E	20
MDB&M	10S	17E	21
MDB&M	10S	17E	22
MDB&M	10S	17E	23
MDB&M	10S	17E	24
MDB&M	10S	17E	26
MDB&M	10S	17E	27
MDB&M	10S	17E	28
MDB&M	10S	17E	31
MDB&M	10S	17E	32
MDB&M	10S	17E	33
MDB&M	10S	17E	34
MDB&M	10S	17E	35
MDB&M	10S	18E	5
MDB&M	10S	18E	6
MDB&M	10S	18E	7
MDB&M	10S	18E	8
MDB&M	10S	18E	9
MDB&M	10S	18E	14
MDB&M	10S	18E	16
MDB&M	10S	18E	17
MDB&M	10S	18E	18
MDB&M	10S	18E	19
MDB&M	10S	18E	20
MDB&M	10S	18E	21
MDB&M	10S	18E	25
MDB&M	10S	18E	26
MDB&M	10S	18E	28
MDB&M	10S	18E	29
MDB&M	10S	18E	34
MDB&M	10S	18E	35
MDB&M	10S	18E	36
MDB&M	10S	19E	17
MDB&M	10S	19E	18
MDB&M	10S	19E	19
MDB&M	10S	19E	20
MDB&M	10S	19E	30
MDB&M	11S	15E	1
MDB&M	11S	15E	12
MDB&M	11S	15E	13
MDB&M	11S	16E	1
MDB&M	11S	16E	2
MDB&M	11S	16E	3
MDB&M	11S	16E	4
MDB&M	11S	16E	5

MDB&M	11S	16E	6
MDB&M	11S	16E	7
MDB&M	11S	16E	8
MDB&M	11S	16E	9
MDB&M	11S	16E	10
MDB&M	11S	16E	11
MDB&M	11S	16E	12
MDB&M	11S	16E	13
MDB&M	11S	16E	14
MDB&M	11S	16E	15
MDB&M	11S	16E	16
MDB&M	11S	16E	17
MDB&M	11S	16E	18
MDB&M	11S	16E	19
MDB&M	11S	16E	20
MDB&M	11S	16E	21
MDB&M	11S	16E	22
MDB&M	11S	16E	23
MDB&M	11S	16E	24
MDB&M	11S	16E	25
MDB&M	11S	16E	26
MDB&M	11S	16E	27
MDB&M	11S	16E	28
MDB&M	11S	16E	35
MDB&M	11S	16E	36
MDB&M	11S	17E	3
MDB&M	11S	17E	4
MDB&M	11S	17E	5
MDB&M	11S	17E	6
MDB&M	11S	17E	7
MDB&M	11S	17E	8
MDB&M	11S	17E	9
MDB&M	11S	17E	10
MDB&M	11S	17E	11
MDB&M	11S	17E	13
MDB&M	11S	17E	14
MDB&M	11S	17E	15
MDB&M	11S	17E	16
MDB&M	11S	17E	17
MDB&M	11S	17E	18
MDB&M	11S	17E	19
MDB&M	11S	17E	20
MDB&M	11S	17E	21
MDB&M	11S	17E	22
MDB&M	11S	17E	23
MDB&M	11S	17E	24
MDB&M	11S	17E	25
MDB&M	11S	17E	26
MDB&M	11S	17E	27
MDB&M	11S	17E	28
MDB&M	11S	17E	29
MDB&M	11S	17E	30

MDB&M	11S	17E	31
MDB&M	11S	17E	32
MDB&M	11S	17E	33
MDB&M	11S	17E	34
MDB&M	11S	17E	35
MDB&M	11S	17E	36
MDB&M	11S	18E	2
MDB&M	11S	18E	3
MDB&M	11S	18E	4
MDB&M	11S	18E	5
MDB&M	11S	18E	8
MDB&M	11S	18E	9
MDB&M	11S	18E	16
MDB&M	11S	18E	17
MDB&M	11S	18E	18
MDB&M	11S	18E	19
MDB&M	11S	18E	20
MDB&M	11S	18E	21
MDB&M	11S	18E	22
MDB&M	11S	18E	27
MDB&M	11S	18E	28
MDB&M	11S	18E	29
MDB&M	11S	18E	30
MDB&M	11S	18E	31
MDB&M	11S	18E	32
MDB&M	11S	18E	33
MDB&M	11S	18E	34
MDB&M	11S	20E	15
MDB&M	11S	20E	16
MDB&M	11S	20E	21
MDB&M	11S	20E	22
MDB&M	11S	20E	23
MDB&M	11S	20E	24
MDB&M	11S	20E	26
MDB&M	11S	20E	27
MDB&M	11S	20E	31
MDB&M	11S	20E	32
MDB&M	11S	20E	33
MDB&M	12S	16E	1
MDB&M	12S	16E	12
MDB&M	12S	16E	13
MDB&M	12S	16E	14
MDB&M	12S	17E	1
MDB&M	12S	17E	2
MDB&M	12S	17E	3
MDB&M	12S	17E	4
MDB&M	12S	17E	5
MDB&M	12S	17E	6
MDB&M	12S	17E	7
MDB&M	12S	17E	8
MDB&M	12S	17E	9
MDB&M	12S	17E	10

MDB&M	12S	17E	11
MDB&M	12S	17E	12
MDB&M	12S	17E	13
MDB&M	12S	17E	14
MDB&M	12S	17E	15
MDB&M	12S	17E	16
MDB&M	12S	17E	17
MDB&M	12S	17E	18
MDB&M	12S	17E	19
MDB&M	12S	17E	20
MDB&M	12S	17E	21
MDB&M	12S	17E	22
MDB&M	12S	17E	23
MDB&M	12S	17E	24
MDB&M	12S	17E	25
MDB&M	12S	17E	26
MDB&M	12S	17E	27
MDB&M	12S	17E	28
MDB&M	12S	17E	29
MDB&M	12S	17E	30
MDB&M	12S	17E	31
MDB&M	12S	17E	32
MDB&M	12S	17E	33
MDB&M	12S	17E	34
MDB&M	12S	17E	35
MDB&M	12S	17E	36
MDB&M	12S	18E	3
MDB&M	12S	18E	4
MDB&M	12S	18E	5
MDB&M	12S	18E	6
MDB&M	12S	18E	7
MDB&M	12S	18E	8
MDB&M	12S	18E	9
MDB&M	12S	18E	10
MDB&M	12S	18E	11
MDB&M	12S	18E	13
MDB&M	12S	18E	14
MDB&M	12S	18E	15
MDB&M	12S	18E	16
MDB&M	12S	18E	17
MDB&M	12S	18E	18
MDB&M	12S	18E	19
MDB&M	12S	18E	20
MDB&M	12S	18E	21
MDB&M	12S	18E	22
MDB&M	12S	18E	23
MDB&M	12S	18E	24
MDB&M	12S	18E	25
MDB&M	12S	18E	26
MDB&M	12S	18E	27
MDB&M	12S	18E	28
MDB&M	12S	18E	29

MDB&M	12S	18E	30
MDB&M	12S	18E	31
MDB&M	12S	18E	32
MDB&M	12S	18E	33
MDB&M	12S	18E	34
MDB&M	12S	18E	35
MDB&M	12S	18E	36
MDB&M	12S	19E	4
MDB&M	12S	19E	13
MDB&M	12S	19E	17
MDB&M	12S	19E	18
MDB&M	12S	19E	19
MDB&M	12S	19E	20
MDB&M	12S	19E	21
MDB&M	12S	19E	24
MDB&M	12S	19E	29
MDB&M	12S	19E	30
MDB&M	12S	19E	31
MDB&M	12S	20E	18
MDB&M	12S	20E	19
MDB&M	13S	17E	1
MDB&M	13S	17E	2
MDB&M	13S	17E	3
MDB&M	13S	17E	4
MDB&M	13S	17E	5
MDB&M	13S	17E	6
MDB&M	13S	17E	7
MDB&M	13S	17E	8
MDB&M	13S	17E	9
MDB&M	13S	17E	10
MDB&M	13S	17E	11
MDB&M	13S	18E	3
MDB&M	13S	18E	4
MDB&M	13S	18E	5
MDB&M	13S	18E	6
MDB&M	13S	18E	7
MDB&M	13S	18E	8
MDB&M	13S	18E	9
MDB&M	13S	19E	6

Root Creek Water District

All or a portion of the following:

MERIDIAN	TOWNSHIP	RANGE	SECTION
MDB&M	11S	20E	33
MDB&M	12S	19E	1
MDB&M	12S	19E	11
MDB&M	12S	19E	12
MDB&M	12S	19E	13
MDB&M	12S	19E	14
MDB&M	12S	19E	22

MDB&M	12S	19E	23
MDB&M	12S	19E	24
MDB&M	12S	19E	25
MDB&M	12S	19E	26
MDB&M	12S	19E	27
MDB&M	12S	19E	36
MDB&M	12S	20E	4
MDB&M	12S	20E	5
MDB&M	12S	20E	6
MDB&M	12S	20E	7
MDB&M	12S	20E	8
MDB&M	12S	20E	9
MDB&M	12S	20E	17
MDB&M	12S	20E	18
MDB&M	12S	20E	19
MDB&M	12S	20E	20
MDB&M	12S	20E	30

Semitropic Water Storage District

All or a portion of the following:

MERIDIAN	TOWNSHIP	RANGE	SECTION
MDB&M	25S	21E	25
MDB&M	25S	21E	36
MDB&M	25S	22E	3
MDB&M	25S	22E	4
MDB&M	25S	22E	5
MDB&M	25S	22E	8
MDB&M	25S	22E	9
MDB&M	25S	22E	10
MDB&M	25S	22E	11
MDB&M	25S	22E	12
MDB&M	25S	22E	13
MDB&M	25S	22E	14
MDB&M	25S	22E	15
MDB&M	25S	22E	16
MDB&M	25S	22E	17
MDB&M	25S	22E	20
MDB&M	25S	22E	21
MDB&M	25S	22E	22
MDB&M	25S	22E	23
MDB&M	25S	22E	24
MDB&M	25S	22E	25
MDB&M	25S	22E	26
MDB&M	25S	22E	27
MDB&M	25S	22E	28
MDB&M	25S	22E	29
MDB&M	25S	22E	30
MDB&M	25S	22E	31
MDB&M	25S	22E	32
MDB&M	25S	22E	33

MDB&M	25S	22E	34
MDB&M	25S	22E	35
MDB&M	25S	22E	36
MDB&M	25S	23E	1
MDB&M	25S	23E	2
MDB&M	25S	23E	3
MDB&M	25S	23E	4
MDB&M	25S	23E	7
MDB&M	25S	23E	8
MDB&M	25S	23E	9
MDB&M	25S	23E	10
MDB&M	25S	23E	11
MDB&M	25S	23E	12
MDB&M	25S	23E	13
MDB&M	25S	23E	14
MDB&M	25S	23E	15
MDB&M	25S	23E	16
MDB&M	25S	23E	17
MDB&M	25S	23E	18
MDB&M	25S	23E	19
MDB&M	25S	23E	20
MDB&M	25S	23E	21
MDB&M	25S	23E	22
MDB&M	25S	23E	23
MDB&M	25S	23E	24
MDB&M	25S	23E	25
MDB&M	25S	23E	26
MDB&M	25S	23E	27
MDB&M	25S	23E	28
MDB&M	25S	23E	29
MDB&M	25S	23E	30
MDB&M	25S	23E	31
MDB&M	25S	23E	32
MDB&M	25S	23E	33
MDB&M	25S	23E	34
MDB&M	25S	23E	35
MDB&M	25S	23E	36
MDB&M	25S	24E	2
MDB&M	25S	24E	3
MDB&M	25S	24E	4
MDB&M	25S	24E	5
MDB&M	25S	24E	6
MDB&M	25S	24E	7
MDB&M	25S	24E	8
MDB&M	25S	24E	9
MDB&M	25S	24E	10
MDB&M	25S	24E	11
MDB&M	25S	24E	12
MDB&M	25S	24E	13
MDB&M	25S	24E	14
MDB&M	25S	24E	15
MDB&M	25S	24E	16

MDB&M	25S	24E	17
MDB&M	25S	24E	18
MDB&M	25S	24E	19
MDB&M	25S	24E	20
MDB&M	25S	24E	21
MDB&M	25S	24E	22
MDB&M	25S	24E	23
MDB&M	25S	24E	24
MDB&M	25S	24E	25
MDB&M	25S	24E	26
MDB&M	25S	24E	27
MDB&M	25S	24E	28
MDB&M	25S	24E	29
MDB&M	25S	24E	30
MDB&M	25S	24E	31
MDB&M	25S	24E	32
MDB&M	25S	24E	33
MDB&M	25S	24E	34
MDB&M	25S	24E	35
MDB&M	25S	24E	36
MDB&M	26S	22E	1
MDB&M	26S	22E	2
MDB&M	26S	22E	3
MDB&M	26S	22E	4
MDB&M	26S	22E	9
MDB&M	26S	22E	10
MDB&M	26S	22E	11
MDB&M	26S	22E	12
MDB&M	26S	22E	13
MDB&M	26S	22E	14
MDB&M	26S	22E	15
MDB&M	26S	22E	16
MDB&M	26S	22E	21
MDB&M	26S	22E	22
MDB&M	26S	22E	23
MDB&M	26S	22E	24
MDB&M	26S	22E	25
MDB&M	26S	22E	26
MDB&M	26S	22E	27
MDB&M	26S	22E	28
MDB&M	26S	22E	34
MDB&M	26S	22E	35
MDB&M	26S	22E	36
MDB&M	26S	23E	1
MDB&M	26S	23E	2
MDB&M	26S	23E	3
MDB&M	26S	23E	4
MDB&M	26S	23E	5
MDB&M	26S	23E	6
MDB&M	26S	23E	7
MDB&M	26S	23E	8
MDB&M	26S	23E	9

MDB&M	26S	23E	10
MDB&M	26S	23E	11
MDB&M	26S	23E	12
MDB&M	26S	23E	13
MDB&M	26S	23E	14
MDB&M	26S	23E	15
MDB&M	26S	23E	16
MDB&M	26S	23E	17
MDB&M	26S	23E	18
MDB&M	26S	23E	19
MDB&M	26S	23E	20
MDB&M	26S	23E	21
MDB&M	26S	23E	22
MDB&M	26S	23E	23
MDB&M	26S	23E	24
MDB&M	26S	23E	25
MDB&M	26S	23E	26
MDB&M	26S	23E	27
MDB&M	26S	23E	28
MDB&M	26S	23E	29
MDB&M	26S	23E	30
MDB&M	26S	23E	31
MDB&M	26S	23E	32
MDB&M	26S	23E	33
MDB&M	26S	23E	34
MDB&M	26S	23E	35
MDB&M	26S	23E	36
MDB&M	26S	24E	1
MDB&M	26S	24E	2
MDB&M	26S	24E	3
MDB&M	26S	24E	4
MDB&M	26S	24E	5
MDB&M	26S	24E	6
MDB&M	26S	24E	7
MDB&M	26S	24E	8
MDB&M	26S	24E	9
MDB&M	26S	24E	11
MDB&M	26S	24E	13
MDB&M	26S	24E	14
MDB&M	26S	24E	15
MDB&M	26S	24E	16
MDB&M	26S	24E	17
MDB&M	26S	24E	18
MDB&M	26S	24E	19
MDB&M	26S	24E	20
MDB&M	26S	24E	21
MDB&M	26S	24E	22
MDB&M	26S	24E	23
MDB&M	26S	24E	24
MDB&M	26S	24E	27
MDB&M	26S	24E	28
MDB&M	26S	24E	29

MDB&M	26S	24E	30
MDB&M	26S	24E	31
MDB&M	26S	24E	32
MDB&M	27S	22E	1
MDB&M	27S	22E	2
MDB&M	27S	22E	10
MDB&M	27S	22E	11
MDB&M	27S	22E	12
MDB&M	27S	22E	13
MDB&M	27S	22E	14
MDB&M	27S	22E	15
MDB&M	27S	22E	22
MDB&M	27S	22E	23
MDB&M	27S	22E	24
MDB&M	27S	22E	25
MDB&M	27S	22E	26
MDB&M	27S	22E	35
MDB&M	27S	22E	36
MDB&M	27S	23E	1
MDB&M	27S	23E	2
MDB&M	27S	23E	3
MDB&M	27S	23E	4
MDB&M	27S	23E	5
MDB&M	27S	23E	6
MDB&M	27S	23E	7
MDB&M	27S	23E	8
MDB&M	27S	23E	9
MDB&M	27S	23E	10
MDB&M	27S	23E	11
MDB&M	27S	23E	12
MDB&M	27S	23E	13
MDB&M	27S	23E	14
MDB&M	27S	23E	15
MDB&M	27S	23E	16
MDB&M	27S	23E	17
MDB&M	27S	23E	18
MDB&M	27S	23E	19
MDB&M	27S	23E	20
MDB&M	27S	23E	21
MDB&M	27S	23E	22
MDB&M	27S	23E	23
MDB&M	27S	23E	24
MDB&M	27S	23E	25
MDB&M	27S	23E	26
MDB&M	27S	23E	27
MDB&M	27S	23E	28
MDB&M	27S	23E	29
MDB&M	27S	23E	30
MDB&M	27S	23E	31
MDB&M	27S	23E	32
MDB&M	27S	23E	33
MDB&M	27S	23E	34

MDB&M	27S	23E	35
MDB&M	27S	23E	36
MDB&M	27S	24E	5
MDB&M	27S	24E	6
MDB&M	27S	24E	7
MDB&M	27S	24E	8
MDB&M	27S	24E	16
MDB&M	27S	24E	17
MDB&M	27S	24E	18
MDB&M	27S	24E	19
MDB&M	27S	24E	20
MDB&M	27S	24E	21
MDB&M	27S	24E	27
MDB&M	27S	24E	28
MDB&M	27S	24E	29
MDB&M	27S	24E	30
MDB&M	27S	24E	31
MDB&M	27S	24E	32
MDB&M	27S	24E	33
MDB&M	27S	24E	34
MDB&M	28S	22E	1
MDB&M	28S	22E	2
MDB&M	28S	22E	11
MDB&M	28S	22E	12
MDB&M	28S	23E	1
MDB&M	28S	23E	2
MDB&M	28S	23E	3
MDB&M	28S	23E	4
MDB&M	28S	23E	5
MDB&M	28S	23E	6
MDB&M	28S	23E	7
MDB&M	28S	23E	8
MDB&M	28S	23E	9
MDB&M	28S	23E	10
MDB&M	28S	23E	11
MDB&M	28S	23E	12
MDB&M	28S	23E	13
MDB&M	28S	23E	14
MDB&M	28S	23E	15
MDB&M	28S	23E	16
MDB&M	28S	23E	17
MDB&M	28S	23E	18
MDB&M	28S	23E	21
MDB&M	28S	23E	22
MDB&M	28S	23E	23
MDB&M	28S	23E	24
MDB&M	28S	23E	25
MDB&M	28S	23E	26
MDB&M	28S	23E	27
MDB&M	28S	23E	28
MDB&M	28S	23E	33
MDB&M	28S	23E	34

MDB&M	28S	23E	35
MDB&M	28S	23E	36
MDB&M	28S	24E	4
MDB&M	28S	24E	5
MDB&M	28S	24E	6
MDB&M	28S	24E	7
MDB&M	28S	24E	8
MDB&M	28S	24E	9
MDB&M	28S	24E	10
MDB&M	28S	24E	15
MDB&M	28S	24E	16
MDB&M	28S	24E	17
MDB&M	28S	24E	18
MDB&M	28S	24E	19
MDB&M	28S	24E	20
MDB&M	28S	24E	21
MDB&M	28S	24E	22
MDB&M	28S	24E	27
MDB&M	28S	24E	28
MDB&M	28S	24E	29
MDB&M	28S	24E	30
MDB&M	28S	24E	31
MDB&M	28S	24E	32
MDB&M	28S	24E	33
MDB&M	28S	24E	34
MDB&M	29S	23E	1
MDB&M	29S	23E	2
MDB&M	29S	23E	3
MDB&M	29S	23E	4
MDB&M	29S	23E	10
MDB&M	29S	23E	11
MDB&M	29S	23E	12
MDB&M	29S	23E	13
MDB&M	29S	23E	14
MDB&M	29S	24E	3
MDB&M	29S	24E	4
MDB&M	29S	24E	5
MDB&M	29S	24E	6
MDB&M	29S	24E	7
MDB&M	29S	24E	8
MDB&M	29S	24E	9
MDB&M	29S	24E	10
MDB&M	29S	24E	13
MDB&M	29S	24E	14
MDB&M	29S	24E	15
MDB&M	29S	24E	16
MDB&M	29S	24E	17
MDB&M	29S	24E	18

and a portion of the Kern River Channel / Jerry Slough / Goose Lake Bed area otherwise not listed

Southern San Joaquin Municipal Utilities District

All or a portion of the following:

MERIDIAN	TOWNSHIP	RANGE	SECTION
MDB&M	25S	24E	1
MDB&M	25S	24E	2
MDB&M	25S	24E	11
MDB&M	25S	24E	12
MDB&M	25S	24E	13
MDB&M	25S	24E	24
MDB&M	25S	24E	25
MDB&M	25S	25E	1
MDB&M	25S	25E	2
MDB&M	25S	25E	3
MDB&M	25S	25E	4
MDB&M	25S	25E	5
MDB&M	25S	25E	6
MDB&M	25S	25E	7
MDB&M	25S	25E	8
MDB&M	25S	25E	9
MDB&M	25S	25E	10
MDB&M	25S	25E	11
MDB&M	25S	25E	12
MDB&M	25S	25E	13
MDB&M	25S	25E	14
MDB&M	25S	25E	15
MDB&M	25S	25E	16
MDB&M	25S	25E	17
MDB&M	25S	25E	18
MDB&M	25S	25E	19
MDB&M	25S	25E	20
MDB&M	25S	25E	21
MDB&M	25S	25E	22
MDB&M	25S	25E	23
MDB&M	25S	25E	24
MDB&M	25S	25E	25
MDB&M	25S	25E	26
MDB&M	25S	25E	27
MDB&M	25S	25E	28
MDB&M	25S	25E	29
MDB&M	25S	25E	30
MDB&M	25S	25E	31
MDB&M	25S	25E	32
MDB&M	25S	25E	33
MDB&M	25S	25E	34
MDB&M	25S	25E	35
MDB&M	25S	25E	36
MDB&M	25S	26E	6
MDB&M	25S	26E	7
MDB&M	25S	26E	18
MDB&M	25S	26E	19
MDB&M	25S	26E	20

MDB&M	25S	26E	21
MDB&M	25S	26E	22
MDB&M	25S	26E	23
MDB&M	25S	26E	24
MDB&M	25S	26E	25
MDB&M	25S	26E	26
MDB&M	25S	26E	27
MDB&M	25S	26E	28
MDB&M	25S	26E	29
MDB&M	25S	26E	30
MDB&M	25S	26E	31
MDB&M	25S	26E	32
MDB&M	25S	26E	33
MDB&M	25S	26E	34
MDB&M	25S	26E	35
MDB&M	25S	26E	36
MDB&M	26S	25E	1
MDB&M	26S	25E	2
MDB&M	26S	25E	3
MDB&M	26S	25E	4
MDB&M	26S	25E	5
MDB&M	26S	25E	6
MDB&M	26S	25E	10
MDB&M	26S	25E	11
MDB&M	26S	25E	12
MDB&M	26S	25E	13
MDB&M	26S	25E	14
MDB&M	26S	25E	18
MDB&M	26S	25E	24
MDB&M	26S	26E	2
MDB&M	26S	26E	3
MDB&M	26S	26E	4
MDB&M	26S	26E	5
MDB&M	26S	26E	6
MDB&M	26S	26E	7
MDB&M	26S	26E	8
MDB&M	26S	26E	9
MDB&M	26S	26E	10
MDB&M	26S	26E	11
MDB&M	26S	26E	14
MDB&M	26S	26E	15
MDB&M	26S	26E	16
MDB&M	26S	26E	17
MDB&M	26S	26E	18
MDB&M	26S	26E	19
MDB&M	26S	26E	20
MDB&M	26S	26E	21
MDB&M	26S	26E	28
MDB&M	26S	26E	29
MDB&M	26S	26E	30
MDB&M	26S	26E	32
MDB&M	26S	26E	33

MDB&M	27S	26E	4
MDB&M	27S	26E	5

Tejon - Castac Water District

All or a portion of the following:

MERIDIAN	TOWNSHIP	RANGE	SECTION
SBB&M	08N	19W	2
SBB&M	09N	17W	6
SBB&M	09N	18W	1
SBB&M	09N	18W	11
SBB&M	09N	18W	14
SBB&M	09N	18W	15
SBB&M	09N	18W	22
SBB&M	09N	18W	27
SBB&M	09N	18W	28
SBB&M	09N	18W	31
SBB&M	09N	19W	26
SBB&M	09N	19W	34
SBB&M	09N	19W	35
SBB&M	09N	19W	36
SBB&M	10N	17W	22
SBB&M	10N	17W	27
SBB&M	10N	17W	28
SBB&M	10N	17W	29
SBB&M	10N	17W	32
SBB&M	10N	17W	33

and a portion of the Castac and Los Alamos y Aqua Caliente Land Grants

Wheeler Ridge Maricopa Water Storage District

All or a portion of the following:

MERIDIAN	TOWNSHIP	RANGE	SECTION
MDB&M	31S	24E	28
MDB&M	31S	24E	29
MDB&M	31S	24E	32
MDB&M	31S	24E	33
MDB&M	31S	24E	34
MDB&M	31S	24E	35
MDB&M	31S	24E	36
MDB&M	32S	24E	1
MDB&M	32S	24E	2
MDB&M	32S	24E	3
MDB&M	32S	24E	4
MDB&M	32S	24E	11
MDB&M	32S	24E	24
MDB&M	32S	24E	25
MDB&M	32S	24E	26

MDB&M	32S	24E	35
MDB&M	32S	24E	36
MDB&M	32S	25E	19
MDB&M	32S	25E	20
MDB&M	32S	25E	21
MDB&M	32S	25E	22
MDB&M	32S	25E	23
MDB&M	32S	25E	24
MDB&M	32S	25E	25
MDB&M	32S	25E	26
MDB&M	32S	25E	27
MDB&M	32S	25E	28
MDB&M	32S	25E	29
MDB&M	32S	25E	30
MDB&M	32S	25E	31
MDB&M	32S	25E	32
MDB&M	32S	25E	33
MDB&M	32S	25E	34
MDB&M	32S	25E	35
MDB&M	32S	25E	36
MDB&M	32S	26E	12
MDB&M	32S	26E	13
MDB&M	32S	26E	14
MDB&M	32S	26E	15
MDB&M	32S	26E	16
MDB&M	32S	26E	17
MDB&M	32S	26E	18
MDB&M	32S	26E	19
MDB&M	32S	26E	20
MDB&M	32S	26E	21
MDB&M	32S	26E	22
MDB&M	32S	26E	23
MDB&M	32S	26E	24
MDB&M	32S	26E	25
MDB&M	32S	26E	26
MDB&M	32S	26E	27
MDB&M	32S	26E	28
MDB&M	32S	26E	29
MDB&M	32S	26E	30
MDB&M	32S	26E	31
MDB&M	32S	26E	32
MDB&M	32S	26E	33
MDB&M	32S	26E	34
MDB&M	32S	26E	35
MDB&M	32S	26E	36
MDB&M	32S	27E	18
MDB&M	32S	27E	19
MDB&M	32S	27E	20
MDB&M	32S	27E	24
MDB&M	32S	27E	25
MDB&M	32S	27E	26
MDB&M	32S	27E	27

MDB&M	32S	27E	28
MDB&M	32S	27E	29
MDB&M	32S	27E	30
MDB&M	32S	27E	31
MDB&M	32S	27E	32
MDB&M	32S	27E	33
MDB&M	32S	27E	34
MDB&M	32S	27E	35
MDB&M	32S	27E	36
MDB&M	32S	28E	16
MDB&M	32S	28E	19
MDB&M	32S	28E	20
MDB&M	32S	28E	21
MDB&M	32S	28E	29
MDB&M	32S	28E	30
MDB&M	32S	28E	31
MDB&M	32S	28E	33
SBB&M	10N	19W	1
SBB&M	10N	19W	2
SBB&M	10N	19W	3
SBB&M	10N	19W	4
SBB&M	10N	19W	5
SBB&M	10N	19W	6
SBB&M	10N	19W	7
SBB&M	10N	19W	8
SBB&M	10N	19W	9
SBB&M	10N	19W	10
SBB&M	10N	19W	11
SBB&M	10N	19W	12
SBB&M	10N	20W	1
SBB&M	10N	20W	2
SBB&M	10N	20W	3
SBB&M	10N	20W	4
SBB&M	10N	20W	11
SBB&M	10N	20W	12
SBB&M	10N	20W	13
SBB&M	10N	20W	14
SBB&M	11N	19W	1
SBB&M	11N	19W	3
SBB&M	11N	19W	5
SBB&M	11N	19W	7
SBB&M	11N	19W	9
SBB&M	11N	19W	11
SBB&M	11N	19W	13
SBB&M	11N	19W	14
SBB&M	11N	19W	15
SBB&M	11N	19W	17
SBB&M	11N	19W	18
SBB&M	11N	19W	19
SBB&M	11N	19W	20
SBB&M	11N	19W	21
SBB&M	11N	19W	22

SBB&M	11N	19W	23
SBB&M	11N	19W	24
SBB&M	11N	19W	25
SBB&M	11N	19W	26
SBB&M	11N	19W	27
SBB&M	11N	19W	28
SBB&M	11N	19W	29
SBB&M	11N	19W	30
SBB&M	11N	19W	31
SBB&M	11N	19W	32
SBB&M	11N	19W	33
SBB&M	11N	19W	34
SBB&M	11N	19W	35
SBB&M	11N	19W	36
SBB&M	11N	20W	1
SBB&M	11N	20W	3
SBB&M	11N	20W	5
SBB&M	11N	20W	6
SBB&M	11N	20W	7
SBB&M	11N	20W	8
SBB&M	11N	20W	9
SBB&M	11N	20W	10
SBB&M	11N	20W	11
SBB&M	11N	20W	12
SBB&M	11N	20W	13
SBB&M	11N	20W	14
SBB&M	11N	20W	15
SBB&M	11N	20W	16
SBB&M	11N	20W	17
SBB&M	11N	20W	18
SBB&M	11N	20W	19
SBB&M	11N	20W	22
SBB&M	11N	20W	23
SBB&M	11N	20W	24
SBB&M	11N	20W	25
SBB&M	11N	20W	26
SBB&M	11N	20W	33
SBB&M	11N	20W	34
SBB&M	11N	20W	35
SBB&M	11N	20W	36
SBB&M	11N	21W	1
SBB&M	11N	21W	2
SBB&M	11N	21W	3
SBB&M	11N	21W	4
SBB&M	11N	21W	5
SBB&M	11N	21W	6
SBB&M	11N	21W	7
SBB&M	11N	21W	8
SBB&M	11N	21W	9
SBB&M	11N	21W	10
SBB&M	11N	21W	11
SBB&M	11N	21W	12

SBB&M	11N	21W	13
SBB&M	11N	21W	14
SBB&M	11N	21W	15
SBB&M	11N	21W	16
SBB&M	11N	21W	17
SBB&M	11N	21W	18
SBB&M	11N	21W	20
SBB&M	11N	21W	21
SBB&M	11N	21W	22
SBB&M	11N	21W	23
SBB&M	11N	21W	24
SBB&M	11N	21W	27
SBB&M	11N	21W	28
SBB&M	11N	21W	29
SBB&M	11N	22W	1
SBB&M	11N	22W	2
SBB&M	11N	22W	3
SBB&M	11N	22W	4
SBB&M	11N	22W	5
SBB&M	11N	22W	6
SBB&M	11N	22W	7
SBB&M	11N	22W	8
SBB&M	11N	22W	9
SBB&M	11N	22W	10
SBB&M	11N	22W	11
SBB&M	11N	22W	12
SBB&M	11N	22W	15
SBB&M	11N	22W	16
SBB&M	11N	22W	17
SBB&M	11N	22W	18
SBB&M	11N	22W	19
SBB&M	11N	22W	20
SBB&M	11N	22W	21
SBB&M	11N	23W	1
SBB&M	11N	23W	2
SBB&M	11N	23W	3
SBB&M	11N	23W	10
SBB&M	11N	23W	11
SBB&M	11N	23W	12
SBB&M	11N	23W	14
SBB&M	11N	23W	23
SBB&M	12N	19W	25
SBB&M	12N	19W	27
SBB&M	12N	19W	29
SBB&M	12N	19W	33
SBB&M	12N	19W	35
SBB&M	12N	20W	28
SBB&M	12N	20W	29
SBB&M	12N	20W	30
SBB&M	12N	20W	31
SBB&M	12N	20W	32
SBB&M	12N	20W	33

SBB&M	12N	21W	25
SBB&M	12N	21W	26
SBB&M	12N	21W	27
SBB&M	12N	21W	28
SBB&M	12N	21W	29
SBB&M	12N	21W	30
SBB&M	12N	21W	31
SBB&M	12N	21W	32
SBB&M	12N	21W	33
SBB&M	12N	21W	34
SBB&M	12N	21W	35
SBB&M	12N	21W	36
SBB&M	12N	22W	25
SBB&M	12N	22W	26
SBB&M	12N	22W	27
SBB&M	12N	22W	28
SBB&M	12N	22W	29
SBB&M	12N	22W	30
SBB&M	12N	22W	31
SBB&M	12N	22W	32
SBB&M	12N	22W	33
SBB&M	12N	22W	34
SBB&M	12N	22W	35
SBB&M	12N	22W	36
SBB&M	12N	23W	25
SBB&M	12N	23W	26
SBB&M	12N	23W	27
SBB&M	12N	23W	28
SBB&M	12N	23W	29
SBB&M	12N	23W	33
SBB&M	12N	23W	34
SBB&M	12N	23W	35
SBB&M	12N	23W	36

and a portion of the Buena Vista Lake Bed area otherwise not listed
and a portion of the Castac and El Tejon Land Grants

Wildlife Benefitting
from
Kern Water Bank Operations

Amphibians

1	<i>Bufo boreas</i>	Western toad
2	<i>Hyla regilla</i>	Pacific treefrog
3	<i>Rana catesbeiana</i>	Bullfrog
4	<i>Spea (=Scaphiopus) hammondi</i>	Western spadefoot toad
5	<i>Taricha torosa</i>	California newt

Reptiles

1	<i>Clemmys marmorata</i>	Western pond turtle
2	<i>Lampropeltis getulus</i>	Common king snake
3	<i>Masticophis flagellum</i>	Coachwhip
4	<i>Masticophis lateralis</i>	Striped racer
5	<i>Phrynosoma coronatum frontale</i>	California horned lizard*
6	<i>Pituophis melanoleucus</i>	Gopher snake

Birds

1	<i>Anelaius tricolor</i>	Tricolored blackbird
2	<i>Accipiter cooperi</i>	Cooper's hawk*
3	<i>Accipiter striatus</i>	Sharp-shinned hawk
4	<i>Aechmophorus clarkii</i>	Clark's grebe
5	<i>Aechmophorus occidentalis</i>	Western grebe
6	<i>Agelaius phoeniceus</i>	Red-winged blackbird
7	<i>Anas acuta</i>	Northern pintail
8	<i>Anas americana</i>	American wigeon
9	<i>Anas clypeata</i>	Northern shoveler
10	<i>Anas crecca</i>	Green-winged teal
11	<i>Anas cyanoptera</i>	Cinnamon teal
12	<i>Anas discors</i>	Blue winged teal
13	<i>Anas platyrhynchos</i>	Mallard
14	<i>Anas strepera</i>	Gadwall
15	<i>Anthus rubescens</i>	American pipit
16	<i>Aquila chrysaetos</i>	Golden eagle
17	<i>Archilochus alexandri</i>	Anna's hummingbird
18	<i>Ardea alba</i>	Great egret
19	<i>Ardea herodias</i>	Great blue heron
20	<i>Asio otis</i>	Long-eared owl
21	<i>Athene cunicularia hypugea</i>	Burrowing owl*
22	<i>Aythya valisneria</i>	Canvasback
23	<i>Aythya affinis</i>	Lesser scaup
24	<i>Aythya americana</i>	Redhead
25	<i>Aythya collaris</i>	Ring-necked duck
26	<i>Botaurus lentiginosus</i>	American bittern
27	<i>Branta canadensis leucopareia</i>	Aleutian Canada goose
28	<i>Bubo virginianus</i>	Great horned owl
29	<i>Bubulcus ibis</i>	Cattle egret
30	<i>Bucephala albeola</i>	Bufflehead
31	<i>Buteo jamaicensis</i>	Red-tailed hawk
32	<i>Buteo lineatus</i>	Red-shouldered hawk
33	<i>Buteo swainsoni</i>	Swainson's hawk*
34	<i>Butorides virescens</i>	Green heron

Wildlife Benefitting
from
Kern Water Bank Operations

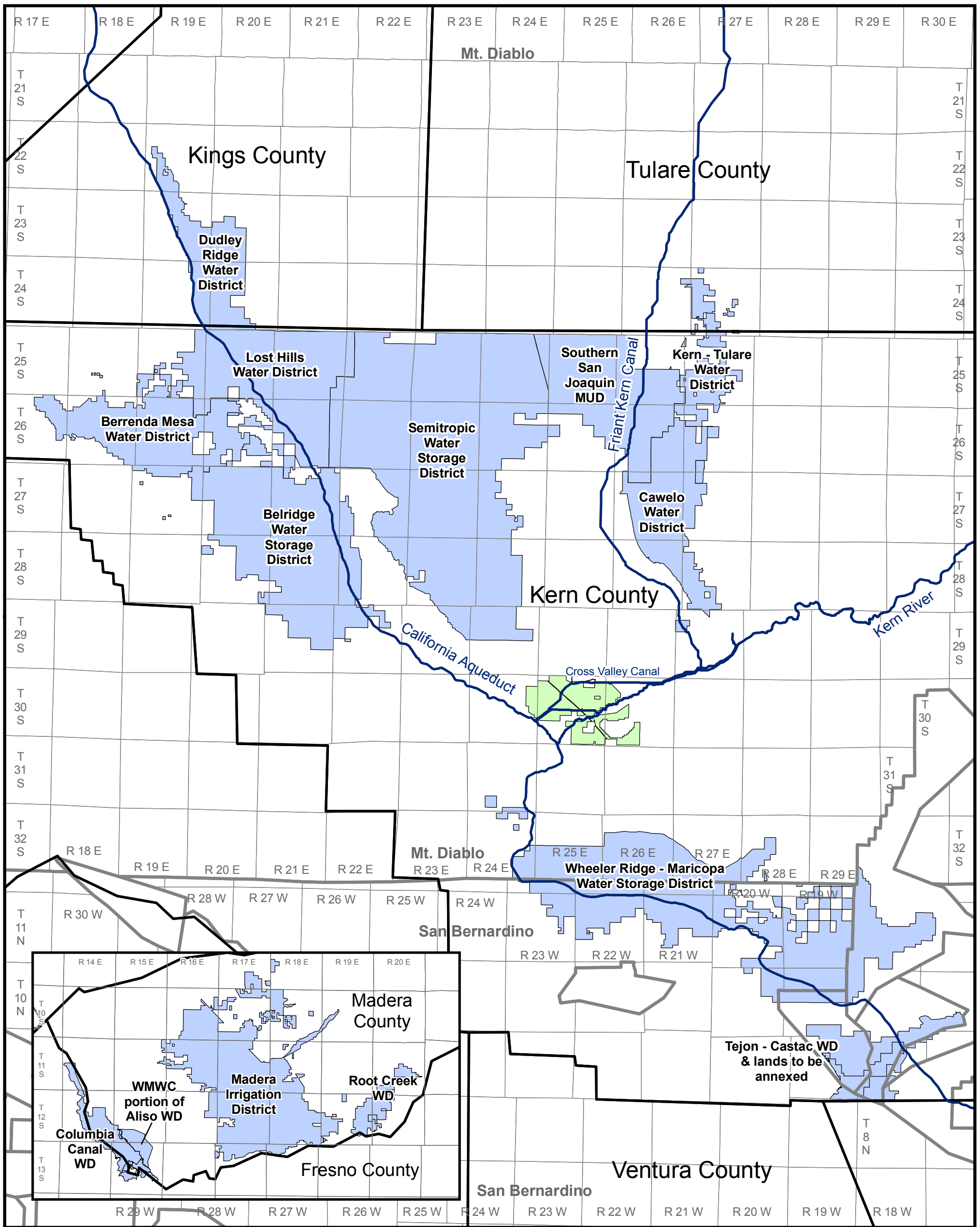
35	<i>Calidris alpina</i>	Dunlin
36	<i>Calidris minutilla</i>	Least sandpiper
37	<i>Callipepla californica</i>	California quail
38	<i>Carduelis psaltria</i>	Lesser goldfinch
39	<i>Carduelis tristis</i>	American goldfinch
40	<i>Cathartes aura</i>	Turkey vulture
41	<i>Catoptrophorus semipalmatus</i>	Willet
42	<i>Ceryle alcyon</i>	Belted kingfisher
43	<i>Charadrius vociferus</i>	Killdeer
44	<i>Chen rossii</i>	Ross's Goose
45	<i>Chlidonias niger</i>	Black tern
46	<i>Chondestes grammacus</i>	Lark sparrow
47	<i>Chordeiles minor</i>	Common night hawk
48	<i>Circus cyaneus</i>	Northern harrier*
49	<i>Cistothorus palustris</i>	Marsh wren
50	<i>Cygnus columbianus</i>	Tundra swan
51	<i>Dendroica coronata</i>	Yellow-rumped (Audubon's) warbler
52	<i>Egretta thula</i>	Snowy egret
53	<i>Elanus leucurus</i>	White-tailed kite
54	<i>Eremophila alpestris actia</i>	California horned lark
55	<i>Euphagus cyanocephalus</i>	Brewer's blackbird
56	<i>Falco columbarius</i>	Merlin falcon
57	<i>Falco mexicanus</i>	Prairie falcon
58	<i>Falco peregrinus</i>	Peregrine falcon
59	<i>Falco sparverius</i>	American kestrel
60	<i>Fulica americana</i>	American coot
61	<i>Gallinago gallinago</i>	Common snipe
62	<i>Gallinula chloropus</i>	Common moorhen
63	<i>Geococcyx californianus</i>	Greater roadrunner
64	<i>Geothlypis trichas</i>	Common yellowthroat
65	<i>Haliaeetus leucocephalus</i>	Bald eagle
66	<i>Himantopus mexicanus</i>	Black-necked stilt
67	<i>Hirundo phyrhronota</i>	Cliff swallow
68	<i>Hirundo rustica</i>	Barn swallow
69	<i>Lanius ludovicianus</i>	Loggerhead shrike
70	<i>Larus argentatus</i>	Herring gull
71	<i>Larus californicus</i>	California gull
72	<i>Larus delawarensis</i>	Ring billed gull
73	<i>Limodramus scolopaceus</i>	Long-billed dowitcher
74	<i>Melospiza lincolnii</i>	Lincoln's sparrow
75	<i>Melospiza melodia</i>	Song sparrow
76	<i>Mergus merganser</i>	Common merganser
77	<i>Mimus polyglottos</i>	Northern Mockingbird
78	<i>Nycticorax nycticorax</i>	Black-crowned night heron
79	<i>Oxyura jamaicensis</i>	Ruddy duck
80	<i>Pandion haliaetus</i>	Osprey
81	<i>Passerculus sandwichensis</i>	Savannah sparrow
82	<i>Pelecanus erythrorhynchos</i>	American white pelican
83	<i>Pelecanus occidentalis</i>	Brown pelican
84	<i>Phalacrocorax auritus</i>	Double-crested cormorant

Wildlife Benefitting
from
Kern Water Bank Operations




85	<i>Phalacrocorax penicillatus</i>	Brandt's cormorant
86	<i>Phalaropus tricolor</i>	Wilson's phalarope
87	<i>Phasianus colchicus</i>	Ring-necked pheasant
88	<i>Plegadis chihi</i>	White-faced ibis
89	<i>Podiceps nigricollis</i>	Eared grebe
90	<i>Podilymbus podiceps</i>	Pie-billed grebe
91	<i>Poliophtila caerulea</i>	Blue-gray gnatcatcher
92	<i>Poocetes gramineus</i>	Vesper sparrow
93	<i>Porzana carolina</i>	Sora
94	<i>Quiscalus mexicanus</i>	Great-tailed grackle
95	<i>Rallus limicola</i>	Virginia rail
96	<i>Recurvirostra americana</i>	American avocet
97	<i>Regulua calendula</i>	Ruby-crowned kinglet
98	<i>Sayornis nigricans</i>	Black phoebe
99	<i>Sayornis saya</i>	Say's phoebe
100	<i>Sterna caspia</i>	Caspian tern
101	<i>Sterna forsteri</i>	Forster's tern
102	<i>Sterna hirundo</i>	Common tern
103	<i>Sturnella neglecta</i>	Western meadowlark
104	<i>Tachycineta bicolor</i>	Tree swallow
105	<i>Tachycineta thalassina</i>	Violet-green swallow
106	<i>Toxostoma redivivum</i>	California thrasher
107	<i>Tringa melanoleuca</i>	Greater yellowlegs
108	<i>Tyrannus verticalis</i>	Western king bird
109	<i>Tyto alba</i>	Common barn owl
110	<i>Vermivora celata</i>	Orange-crowned Warbler
111	<i>Xanthocephalus xanthocephalus</i>	Yellow-headed blackbird
112	<i>Zenaida macroura</i>	Mourning dove
113	<i>Zonotrichia atricapilla</i>	Golden-crowned sparrow
114	<i>Zonotrichia leucophrys</i>	White crowned sparrow

Mammals

1	<i>Dipodomys heermanni</i>	Heermann's kangaroo rat
2	<i>Dipodomys nitratooides nitratooides</i>	Tipton kangaroo rat*
3	<i>Felix rufus</i>	Bobcat
4	<i>Perognathus inornatus inornatus</i>	San Joaquin pocket mouse*
5	<i>Sorex ornatus relictus</i>	Buena Vista Lake Shrew
6	<i>Taxidea taxus</i>	American badger*
7	<i>Thomomys bottae</i>	Botta's pocket gopher
8	<i>Vulpes macrotis mutica</i>	San Joaquin kit fox*



Legend

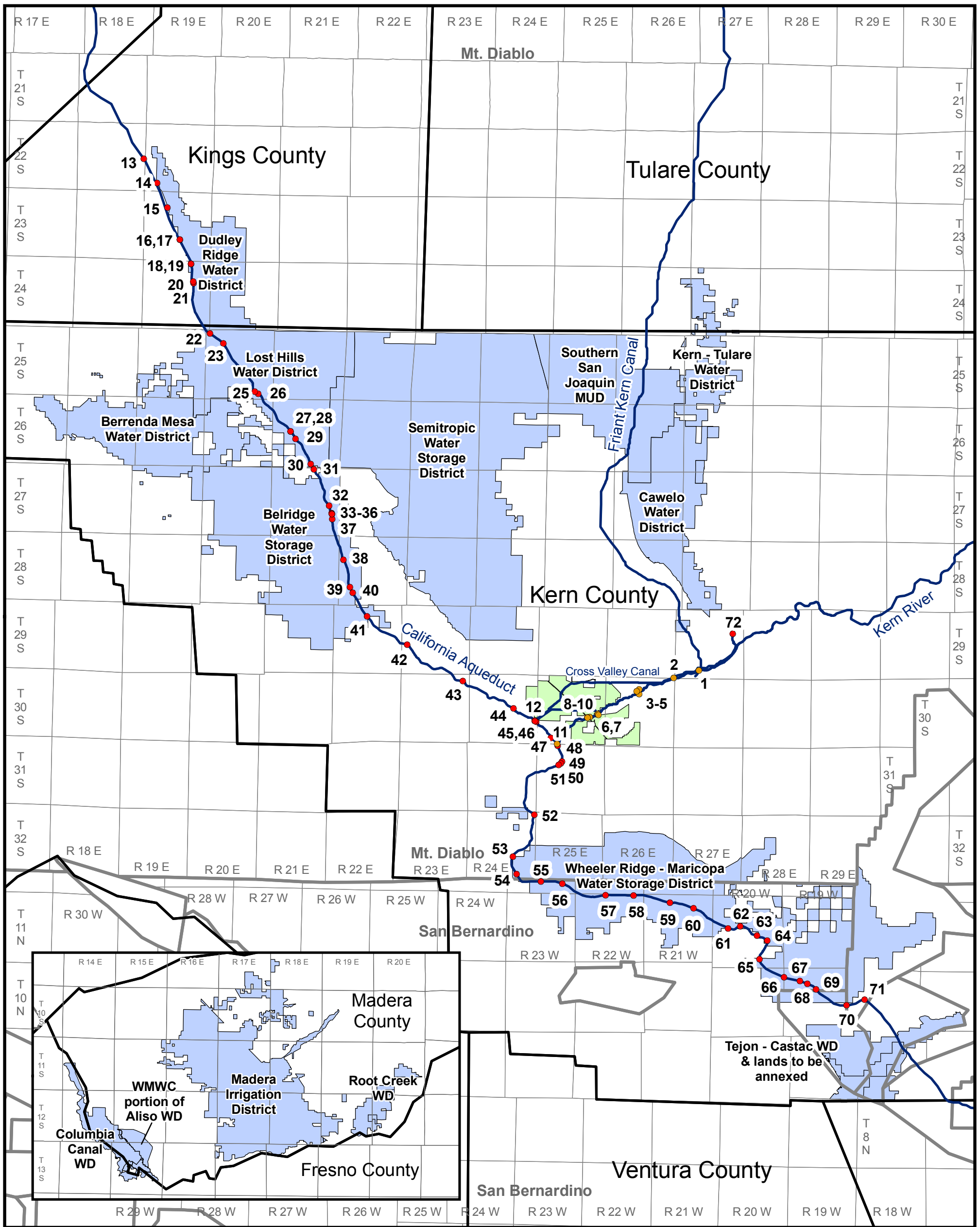
-  River / Canal
-  KWB Participant
-  Kern Water Bank

Place of Use Kern Water Bank and Participant Service Areas



KERN WATER BANK AUTHORITY

NOTE: Deliveries to some areas by exchange.



Legend

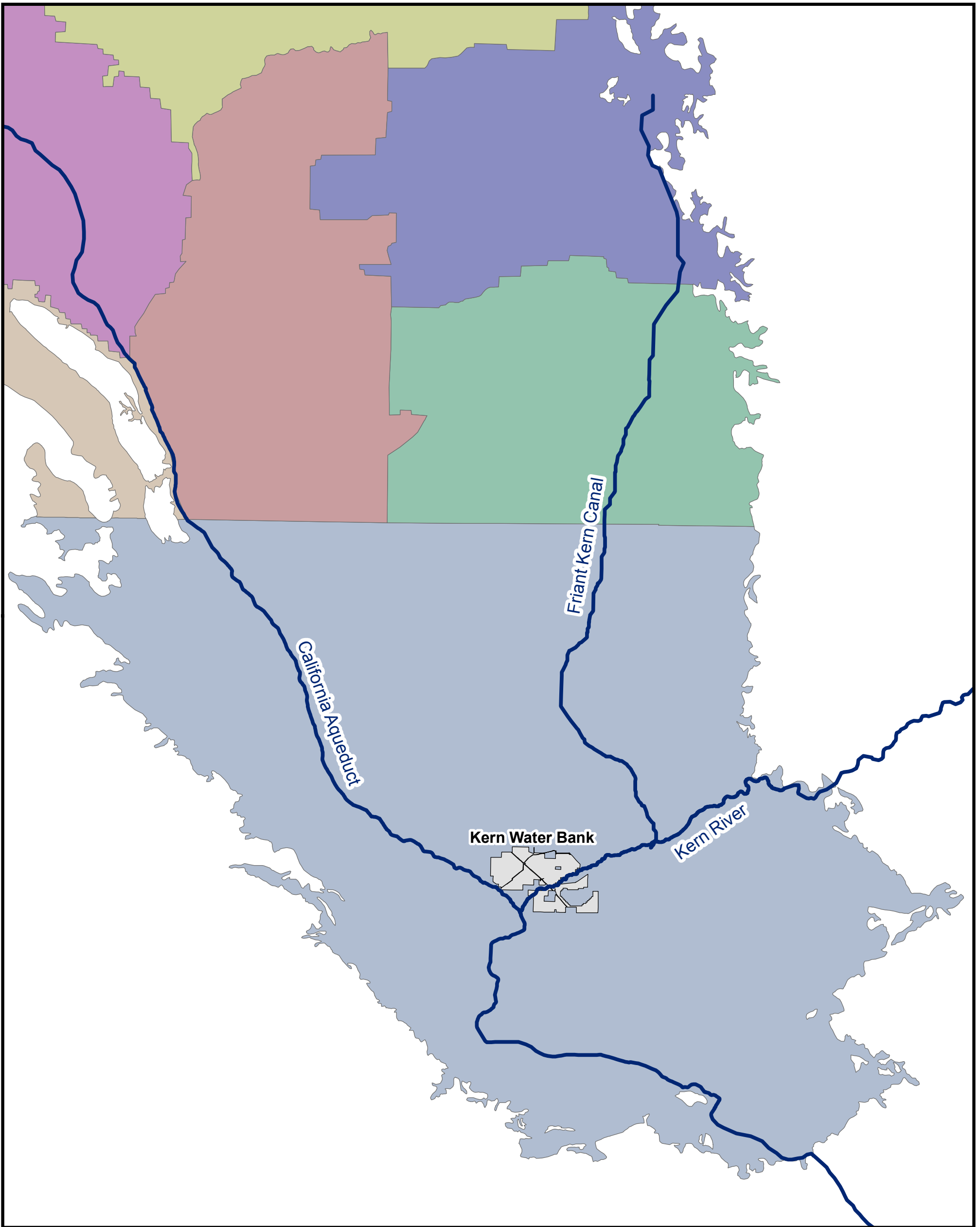
- Point of Diversion
- Point of Rediversion
- River / Canal
- KWB Participant
- Kern Water Bank

Points of Diversion / Rediversion










KERN WATER BANK AUTHORITY

NOTE: Deliveries to some areas by exchange.



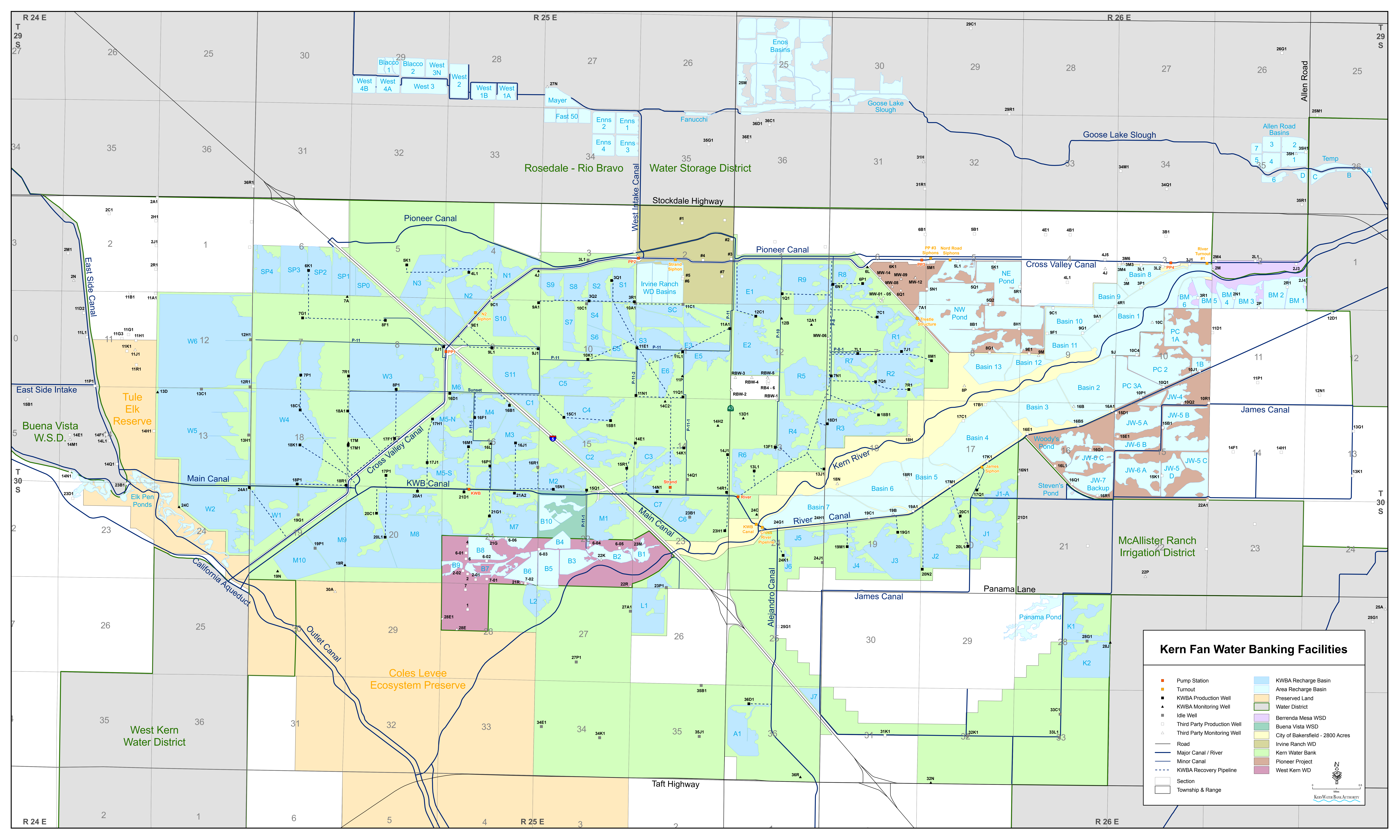
Sub-basins

-  KAWEAH
-  KERN COUNTY
-  KINGS
-  PLEASANT VALLEY
-  TULARE LAKE
-  TULE
-  WESTSIDE

San Joaquin Groundwater Basin



KERN WATER BANK AUTHORITY



Kern Fan Water Banking Facilities

■ Pump Station	■ KWBA Recharge Basin
■ Turnout	■ Area Recharge Basin
■ KWBA Production Well	■ Preserved Land
▲ KWBA Monitoring Well	■ Water District
■ Idle Well	■ Berrenda Mesa WSD
□ Third Party Production Well	■ Buena Vista WSD
▲ Third Party Monitoring Well	■ City of Bakersfield - 2800 Acres
— Road	■ Irvine Ranch WD
— Major Canal / River	■ Kern Water Bank
— Minor Canal	■ Pioneer Project
- - - KWBA Recovery Pipeline	■ West Kern WD
□ Section	
□ Township & Range	