

Environmental Information For Petitions

Attachment #7



PHOTO 1 – Riparian habitat near the existing Dreder Division.

*Phase II*



PHOTO 2 – Location of the Proposed New Grimes Diversion.

*Current application*



PHOTO 3 – Location of the Proposed Meridian Diversion.

*Phase II*

SOURCE: ESA, 2007

Meridian Farms Water Company – Fish Screen Project . 203104

**Appendix B-1**

Photographs of Project Area

Environmental Information For Petitions

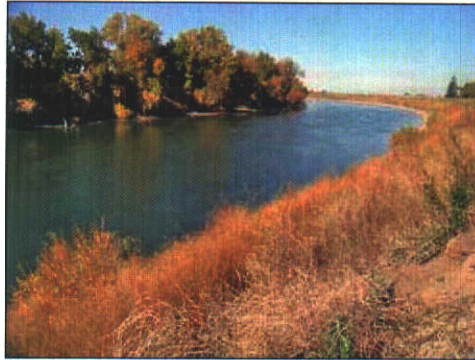


PHOTO 4 – View of riparian grassland along the Sacramento River near the Meridian Diversion.

*Phase II*



PHOTO 5 – Existing Grimes Diversion.

*Current application*

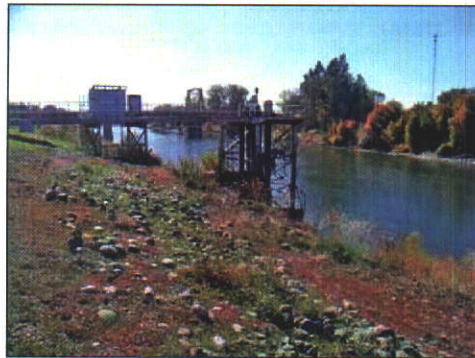


PHOTO 6 – Existing Meridian Diversion.

*Phase II*

SOURCE: ESA, 2007

Meridian Farms Water Company – Fish Screen Project . 203104

**Appendix B-2**  
Photographs of Project Area

# Environmental Information For Petitions



PHOTO 7 – Reclamation District 70 Drain.



PHOTO 8 – Main Canal.



PHOTO 9 – Water Delivery Ditch.

SOURCE: ESA, 2007

Meridian Farms Water Company – Fish Screen Project . 203104

**Appendix B-3**

Photographs of Project Area

## Environmental Information For Petitions



PHOTO 10 – Seep Ditch at the location of the Proposed Drexler Relift.



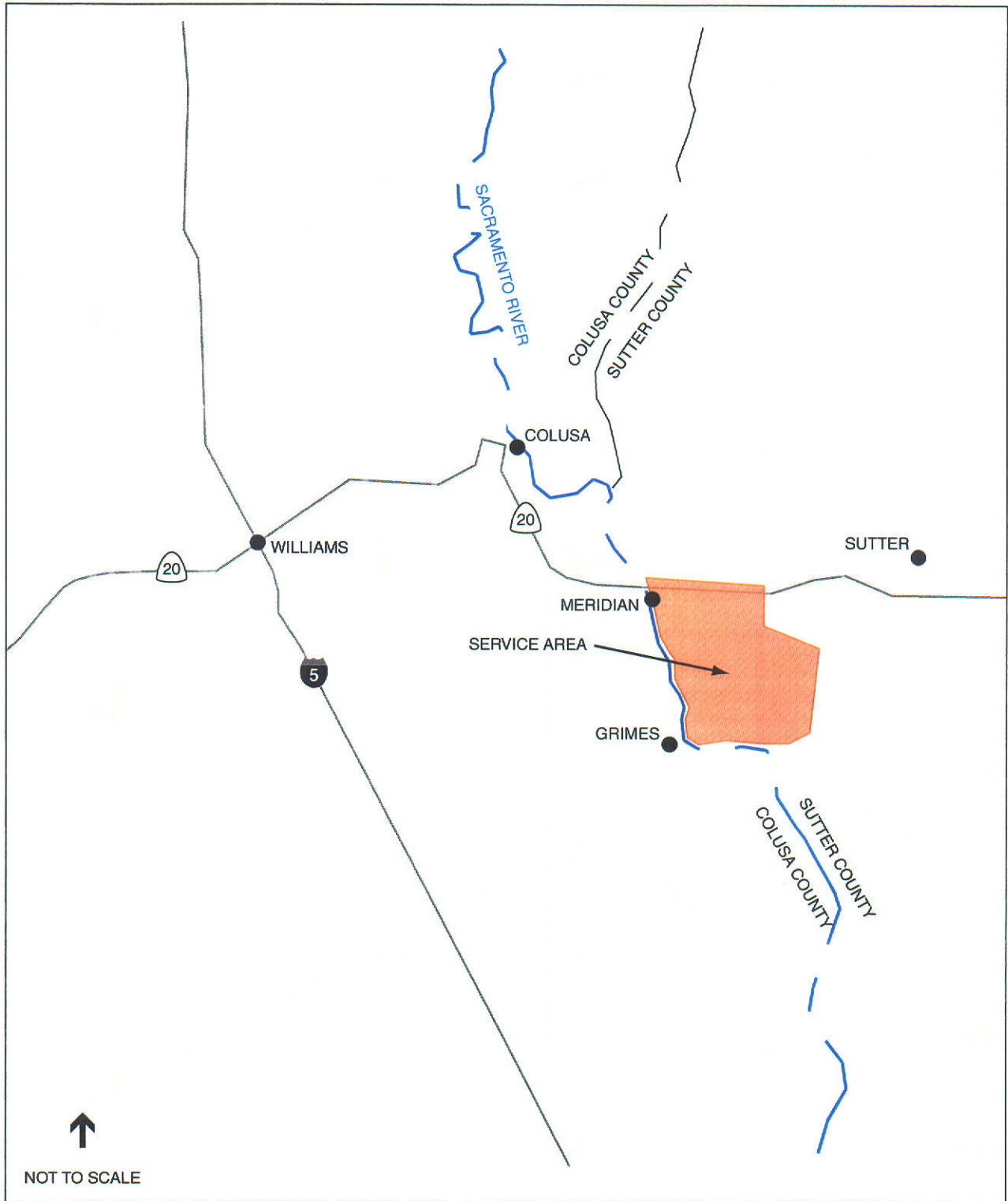
PHOTO 11 – Small mammal burrow.

SOURCE: ESA, 2007

Meridian Farms Water Company – Fish Screen Project . 203104

**Appendix B-4**

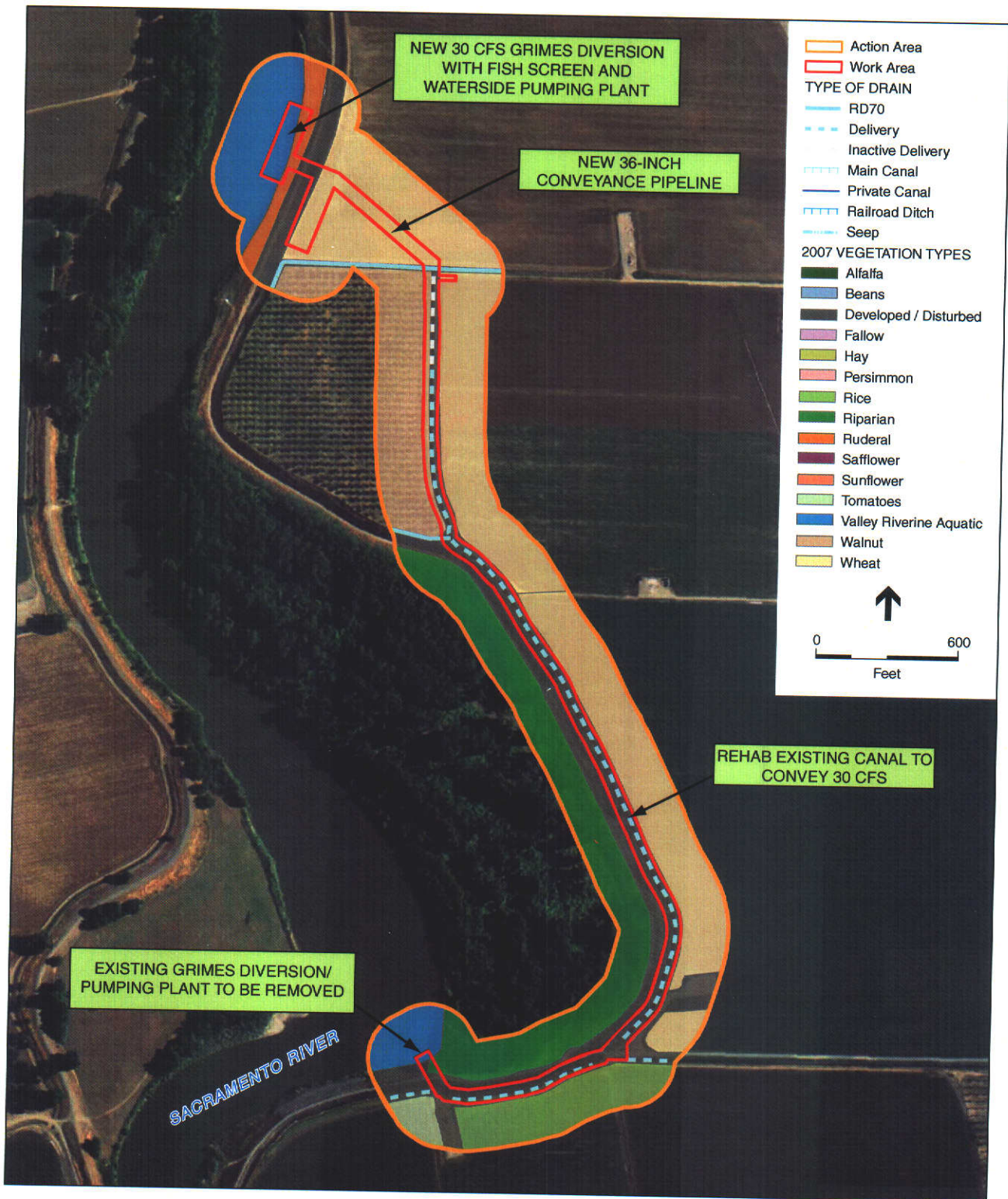
Photographs of Project Area



SOURCE: MWH, 2004; and ESA, 2007

Meridian Farms Water Company – Fish Screen Project . 203104

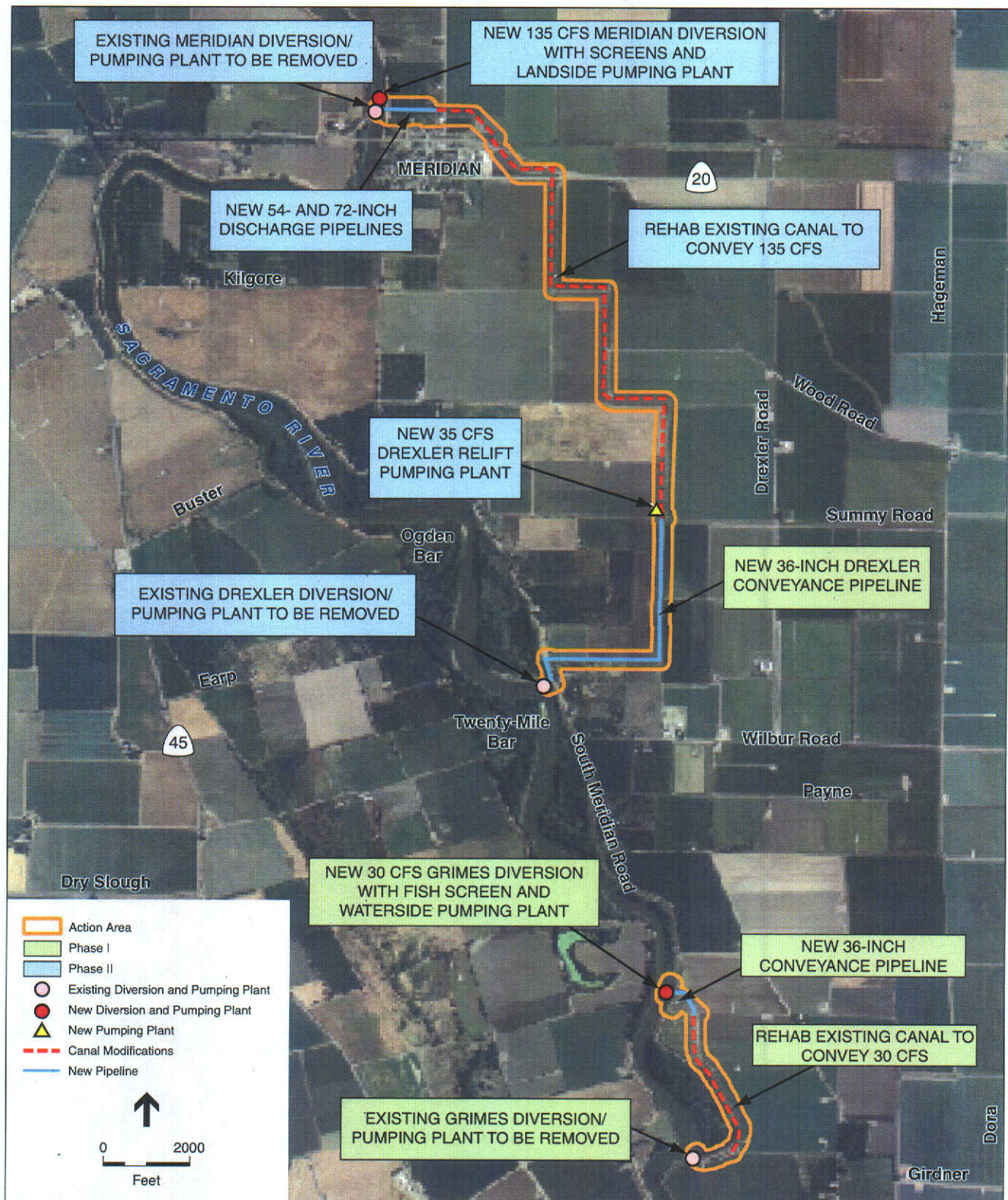
**Figure 1-1**  
Project Location Map



SOURCE: USDA, 2005; MWH, 2007; MFWC, 2007; and ESA, 2007

Meridian Farms Water Company – Fish Screen Project . 203104

**Figure 3-2**  
Vegetation Communities within the Action Area – South



SOURCE: USDA, 2005, MWH, 2007; MFWC, 2007; and ESA, 2007

Meridian Farms Water Company – Fish Screen Project . 203104

**Figure 2-1**  
Proposed Project/Action Facilities