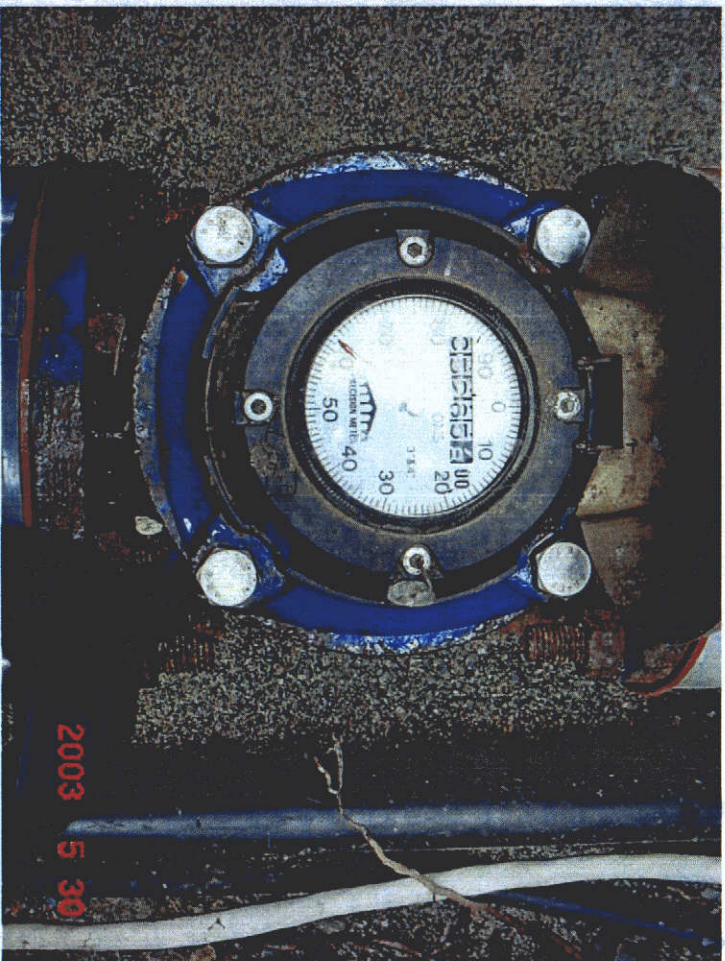




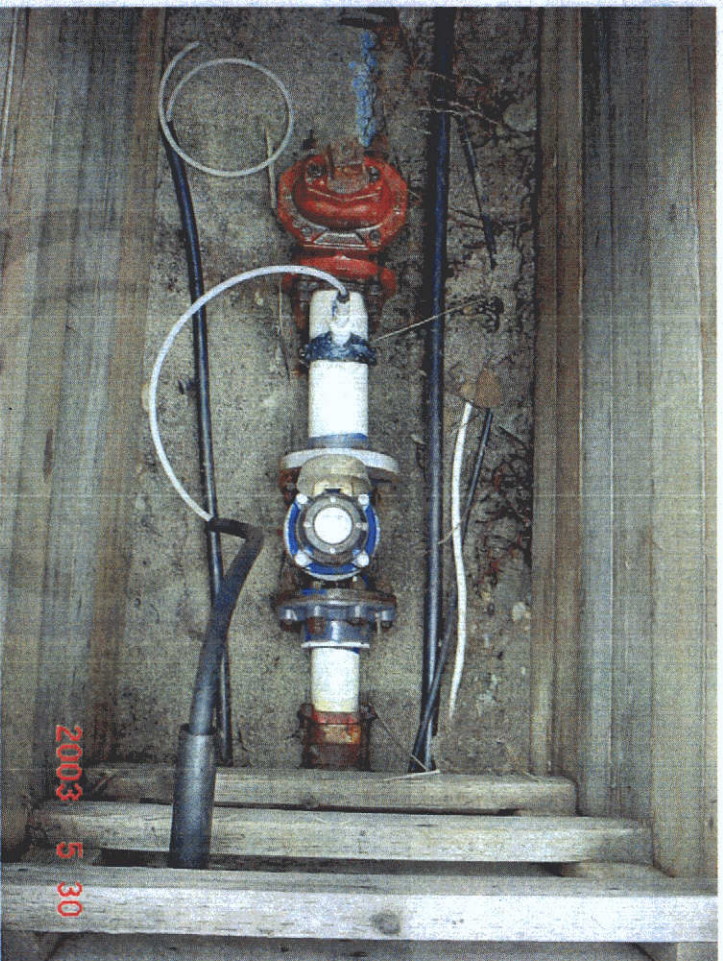
Chlorine injection and the pumping system are controlled from this shed near the POD.



This view shows the electric meter on the rear of the control and treatment shed. The in ground vault on the left contains the water main section where chlorine is injected and the main meter.



Main water meter located in the under ground vault.



View into the vault of the water main, meter, and chlorine injector.



Primary storage tank with capacity 100,000 gallons.



"Upper" storage tank with capacity of 50,000 gallons.



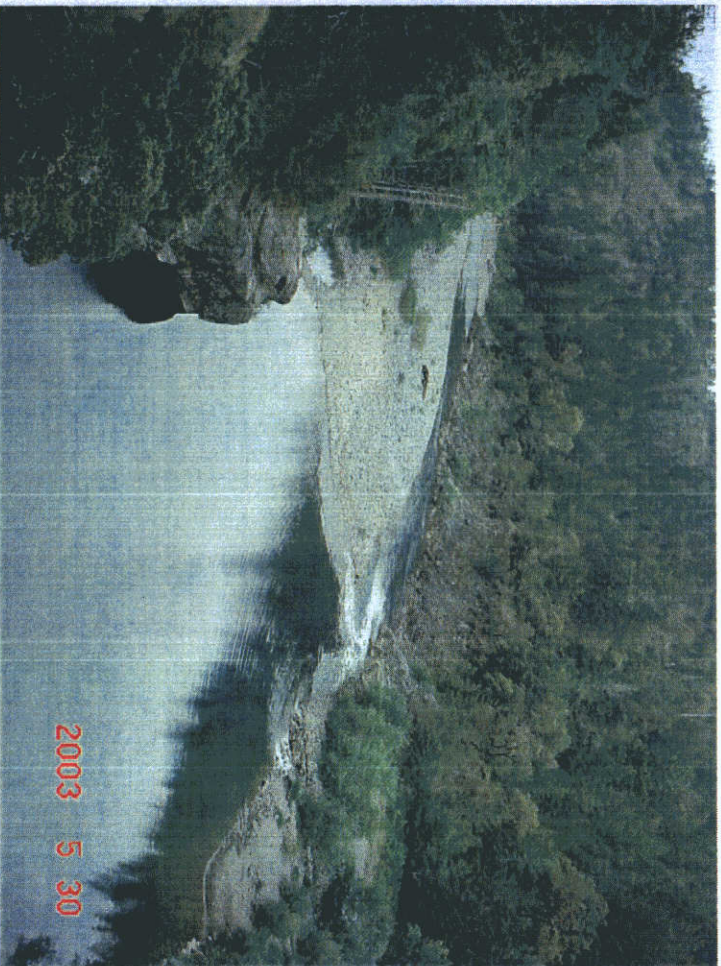
The proposed service area includes the National Park Service office on Route 199.



Trailer park included within the proposed place of use.



View looking west along Route 199 in the center of Hiouchi.



View of the Smith River about 1.5 miles upstream of the POD.



River at the point of diversion. The main channel was behind the bar at the far bank in this picture.



This is the sump for the Ranney collector. The pump is sealed in this concrete sump.