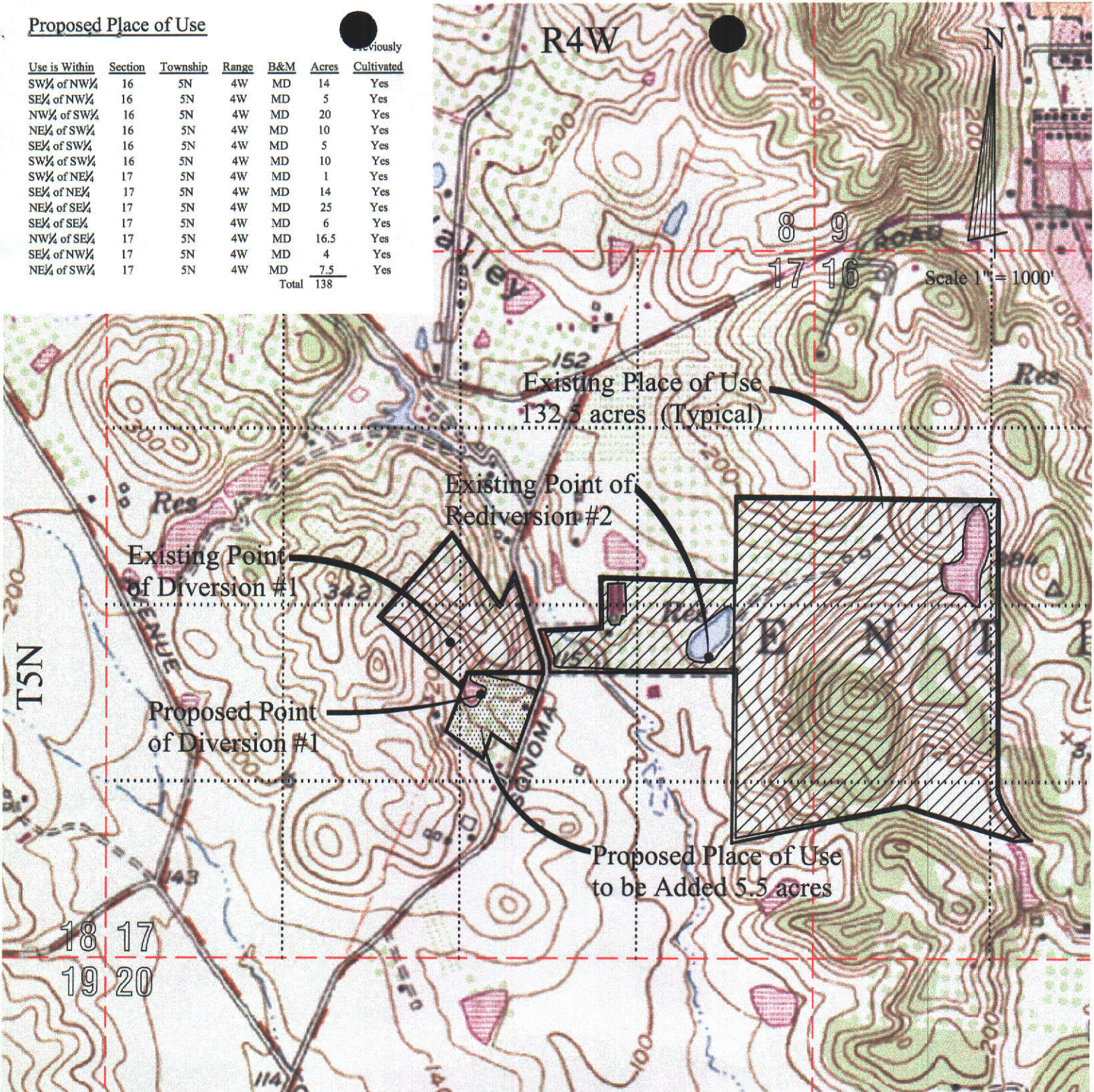


Proposed Place of Use

Use is Within	Section	Township	Range	B&M	Acres	Cultivated	Previously
SW¼ of NW¼	16	5N	4W	MD	14	Yes	
SE¼ of NW¼	16	5N	4W	MD	5	Yes	
NW¼ of SW¼	16	5N	4W	MD	20	Yes	
NE¼ of SW¼	16	5N	4W	MD	10	Yes	
SE¼ of SW¼	16	5N	4W	MD	5	Yes	
SW¼ of SW¼	16	5N	4W	MD	10	Yes	
SW¼ of NE¼	17	5N	4W	MD	1	Yes	
SE¼ of NE¼	17	5N	4W	MD	14	Yes	
NE¼ of SE¼	17	5N	4W	MD	25	Yes	
SE¼ of SE¼	17	5N	4W	MD	6	Yes	
NW¼ of SE¼	17	5N	4W	MD	16.5	Yes	
SE¼ of NW¼	17	5N	4W	MD	4	Yes	
NE¼ of SW¼	17	5N	4W	MD	7.5	Yes	
					Total	138	



Points of Diversion

Map Point	Description
1	Point of Diversion by Collection to Storage in Existing Reservoir #1: Located N.222,800 and E.1,906,650, California Coordinate System, Zone 2. Being within NW¼ of SE¼ of projected Section 17, T5N, R4W, MDB&M, also North 1,950 feet and West 2,500 feet from SE corner of said Projected Section 17.
2	Point of Rediversion for Water Diverted at Point of Diversion #1: Located N.223,050 and E.1,908,450, California Coordinate System, Zone 2. Being within the NE¼ of SE¼ of Projected Section 17, T5N, R4W, MDB&M.

Map to Accompany
 PERMIT 21096 (APPLICATION 30505)
 PETITION FOR CHANGE
 IN POINT OF DIVERSION
 and
 PLACE OF USE
 by
 ANTHONY TRUCHARD
 Napa County, California
Wagner Bonsignore
 Consulting Civil Engineers, A Corporation



Search TerraServer

Home > Image

Search input field with a GO button

Navigate

View: Aerial Photo

Napa, California, United States 06 Jul 1993

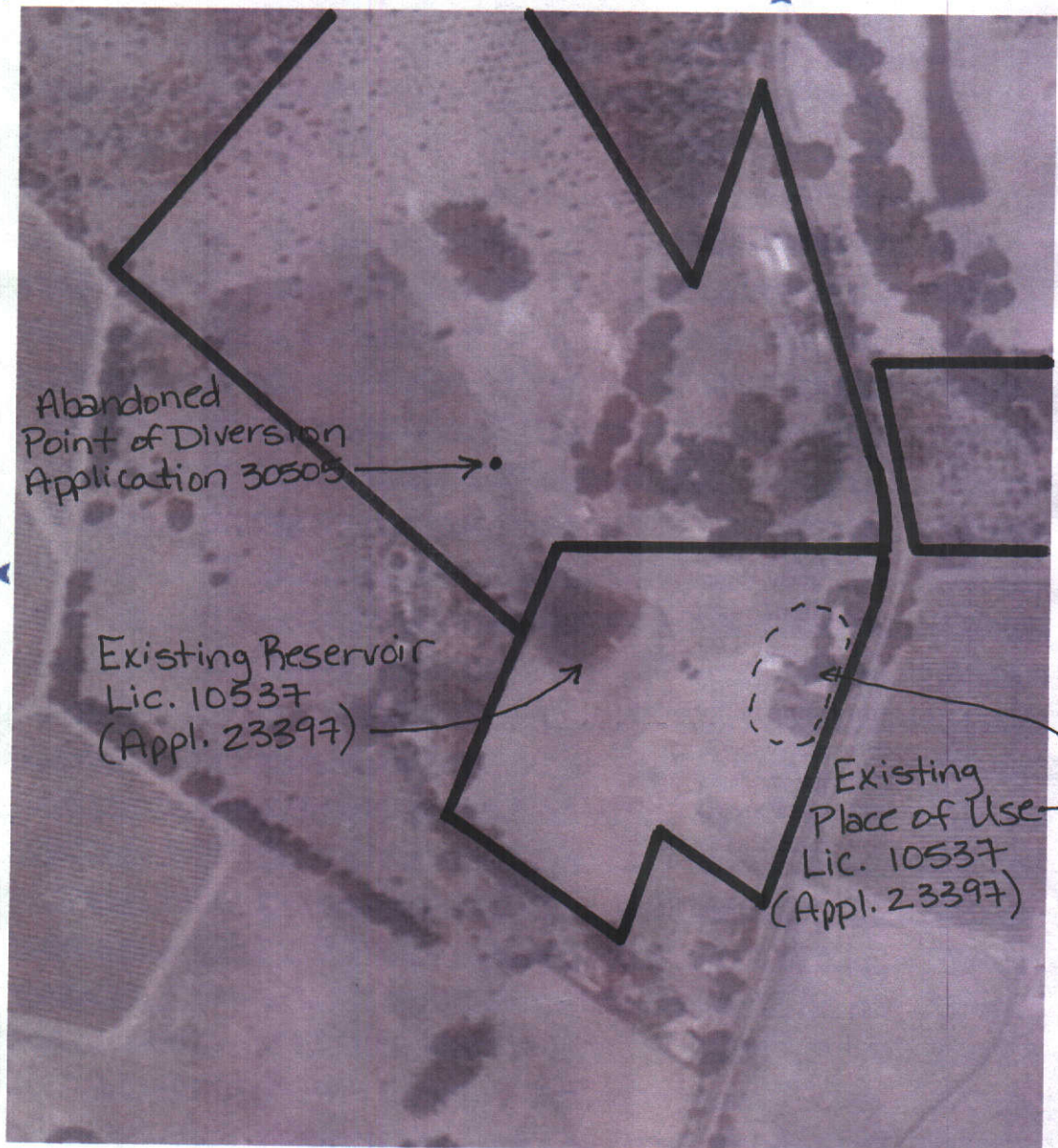


1 meter resolution



Map Size: Large

- Advanced Find
- Famous Places
- Web Services
- About



Related Links:

Other Imagery:

USGS Topo Map 01 Jul 1983

House and Home:

- Homes for sale in 94558
- Homes for sale in 94559
- Schools, Crime and Demographics for 94558
- Schools, Crime and Demographics for 94559

0 100M 0

Image courtesy of the U.S. Geological Survey
Source=3812246SW Center=(-122.3243,38.2782) 0ms Running Time

TerraServer-USA Sponsors

