



ASL  
7-11-60



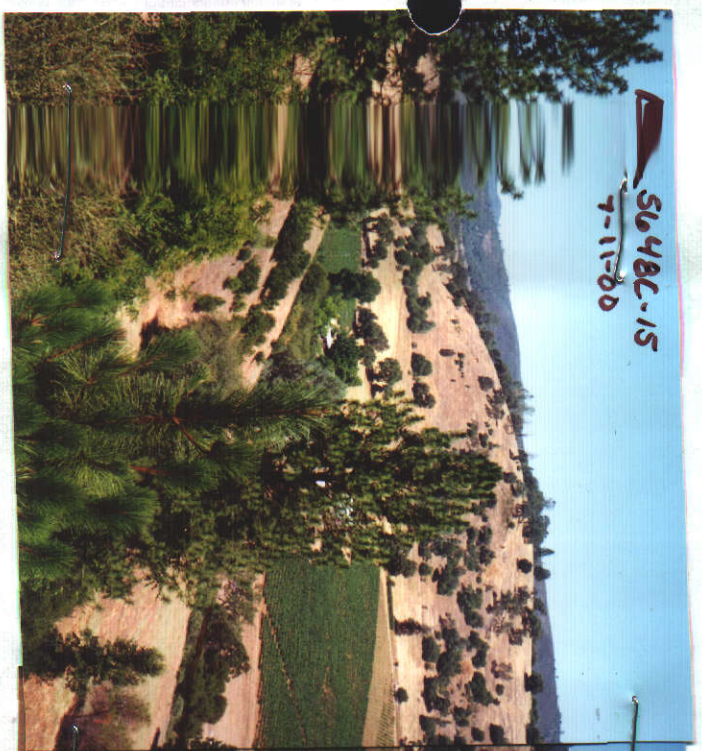
RESERVOIR No. 2



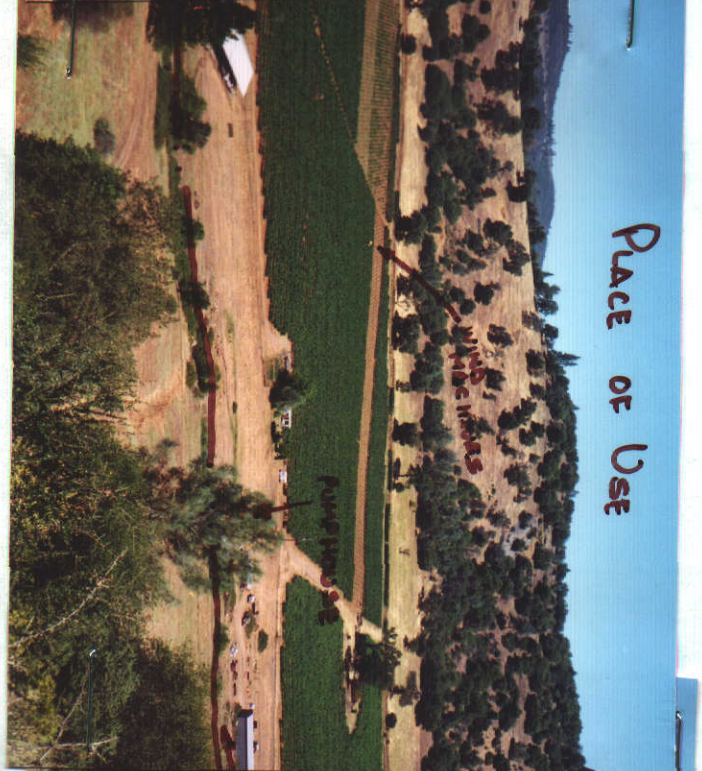
ASL

DAM

SPILLWAY



5648C-15  
7-11-60

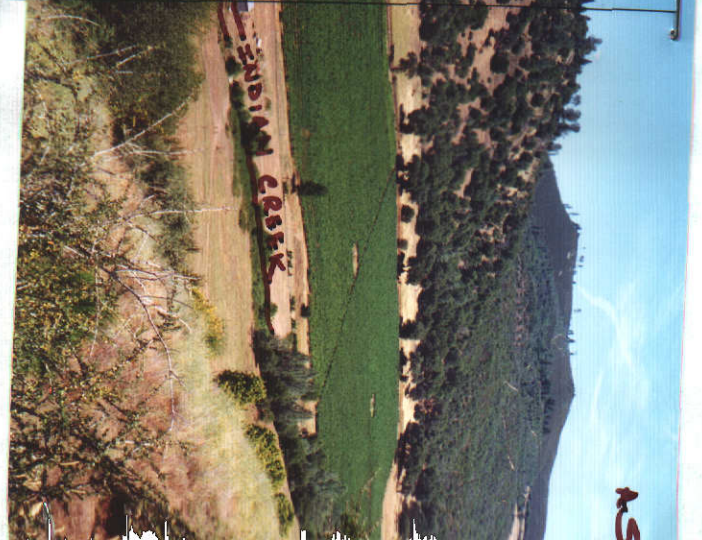


PLACE OF USE

WIND MILLS

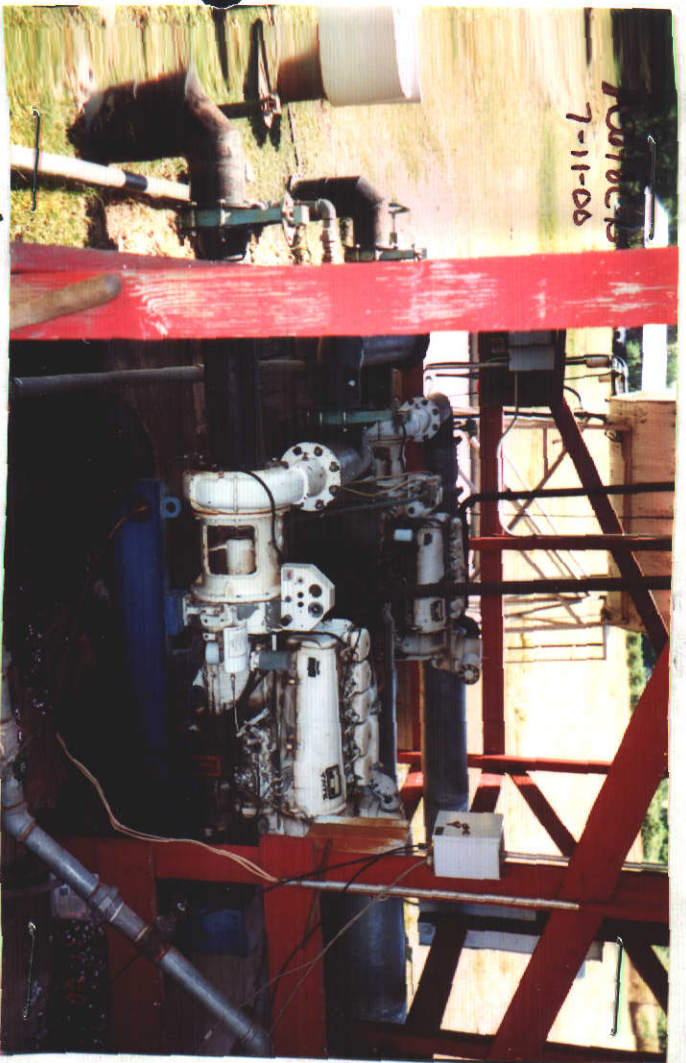
PUMP HOUSE

INDIAN CREEK



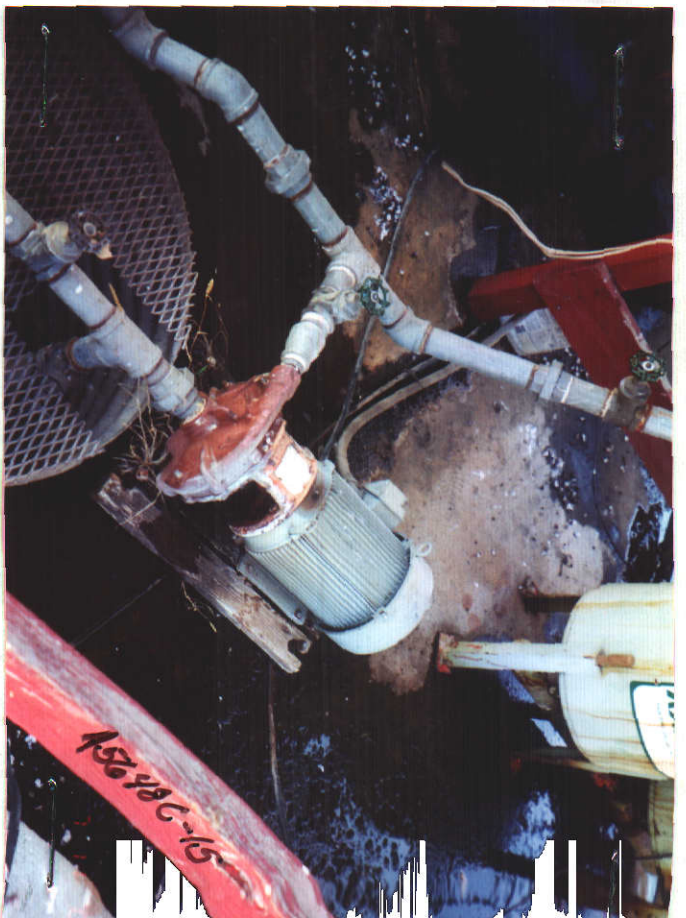
ASL

ASL



AT PUMP HOUSE.

2 - DEUTZ DIESEL  
DRIVEN PUMPS  
MODEL F5L-912  
73-HP  
SERIAL #S  
- 6257892  
6257893



AT PUMP HOUSE.

10 HP, US Motors  
#350020M  
FOR DRIP IR



NEAR POD TO OFFSTREAM  
STORAGE. OVERGROWN WITH  
RIPARIAN VEGETATION.

ASes  
P19411  
SM