

## PETITION FOR CHANGE

### PHOTOGRAPHS

Figures 1-3 are images taken from the perspectives requested. In each of the images, all of the trees near the active channel are willows (*Salix* sp.). Figure 4 is a *Google Earth* image providing perspective on the size and appearance of the riparian corridor before the leaves of deciduous trees have fallen. Because the future use of water will take place underground, no photographs are included of the future place of use.



Figure 1. Stream channel and riparian corridor downstream from outfall, 30 January 2009. View from right (northwest) bank below existing outfall.



Figure 2. Stream channel and riparian corridor upstream from outfall, 30 January 2009. View from right (northwest) bank beneath bridge, approximately 50 ft. upstream from existing outfall.



Figure 3. Existing outfall (grate hidden beneath rocks indicated by red square) and nearby vegetation, 3 February 2009. View from left (southeast) bank.

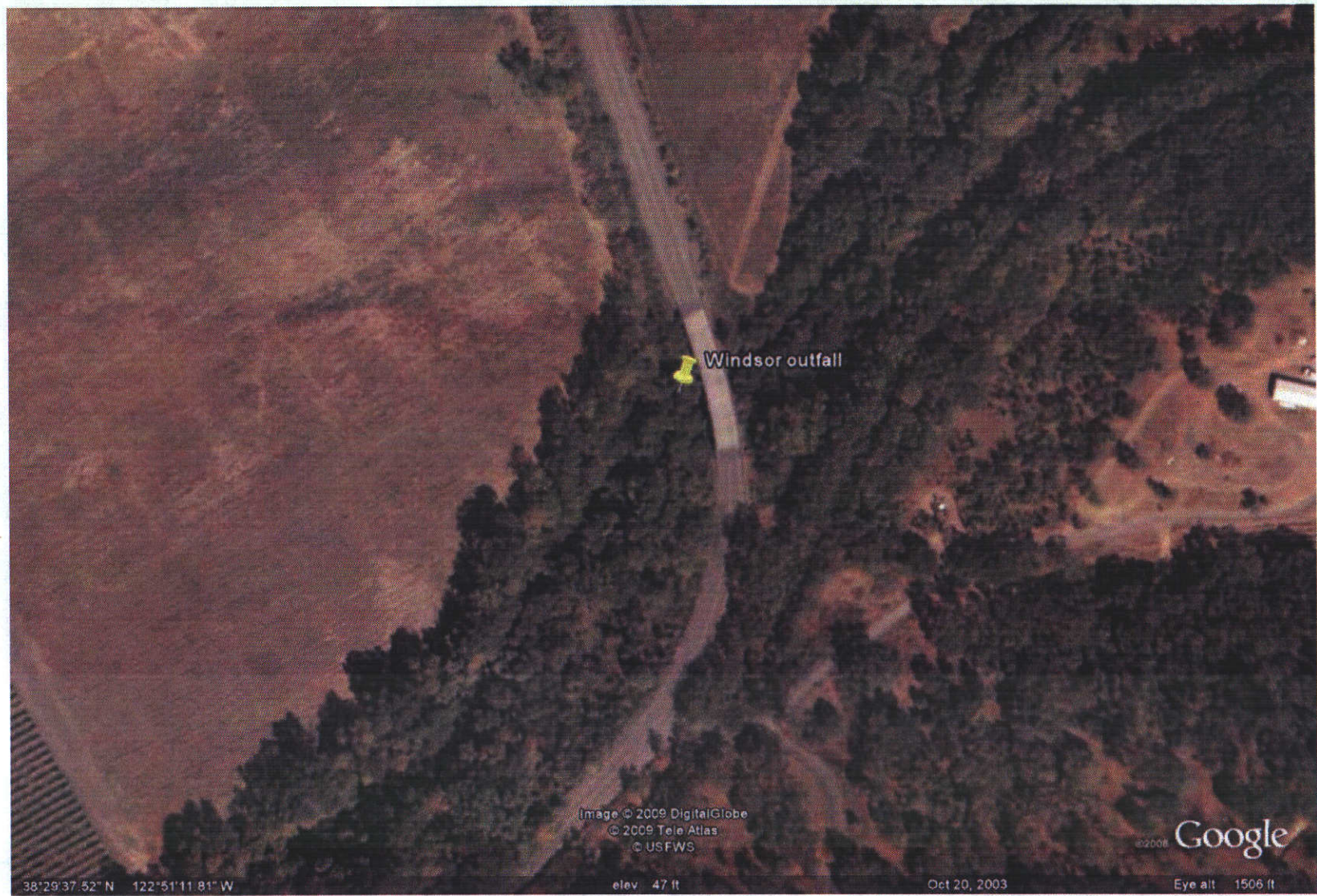


Figure 4. Satellite view of riparian corridor near Trenton Healdsburg Road bridge.