

(1) Etiwanda Debris Dam and Basin North
243, 775 feet and East 2,146,550 feet



(2) To Etiwanda Spreading Grounds North
240, 625 feet and East 2,147,275 feet



(3) To Etiwanda Spreading Grounds North
236, 975 feet and East 2,149,750 feet



(4) To Lower San Sevaine Retention Basin
North 234,000 feet and East 2,150,200 feet



(5) San Sevaine Debris Dam & Basin; to
San Savaine Spreading Grounds and San
Savaine Basins North 243,850 feet and East
2,155,450 feet



(6) Lower San Sevaine Retention Basin
North 232,900 feet and East 2,150,650 feet



(7) To Victoria Basin North 230,425 feet
and East 2,150,550 feet





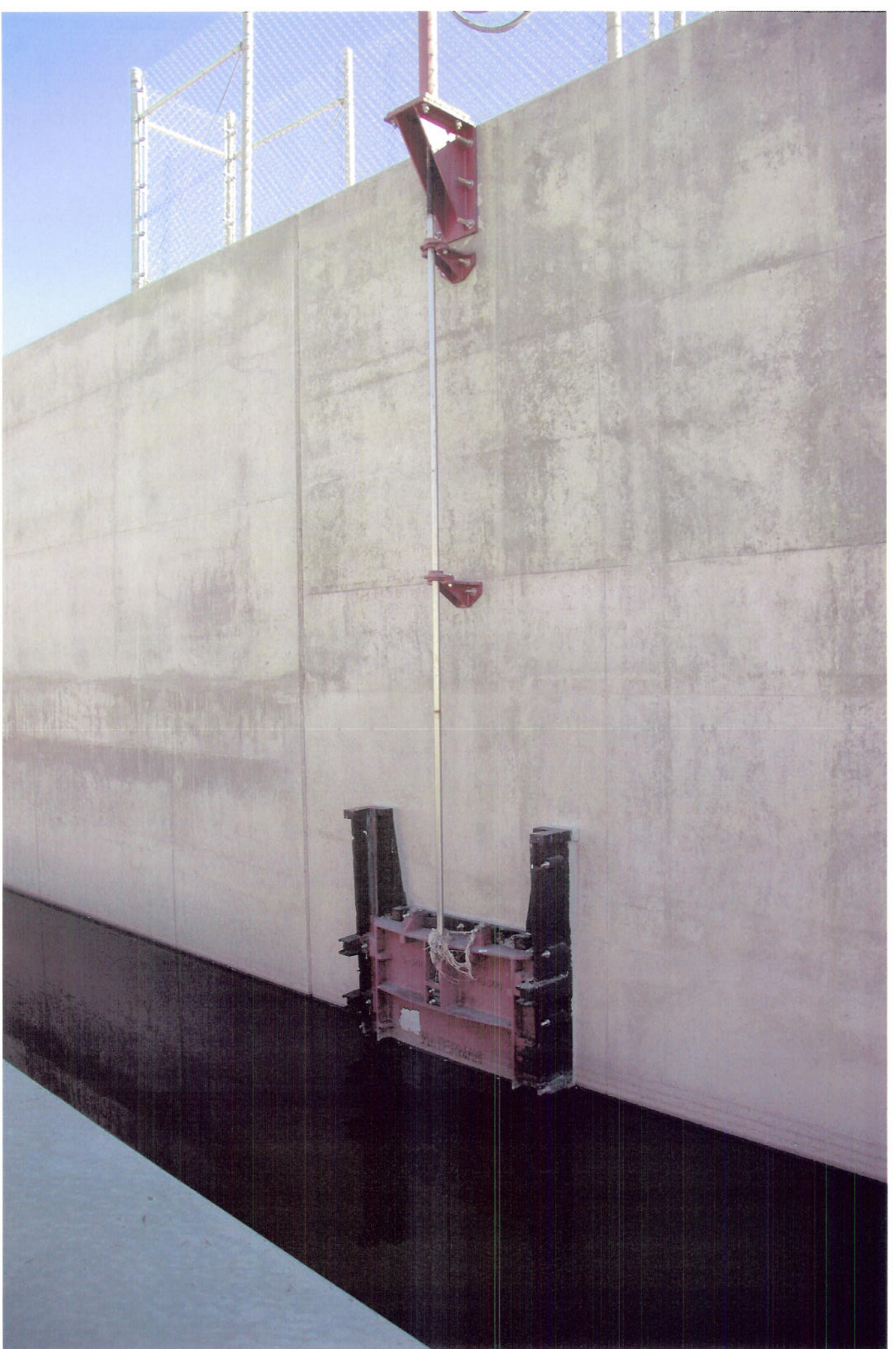
(8) To Hickory Basin North 216,150 feet
and East 2,143,250 feet



(9) Hickory Basin North 215,900 feet and
East 2,147,550 feet



(10) To Jurupa Basin North 201,625 feet
and East 2,147,150 feet

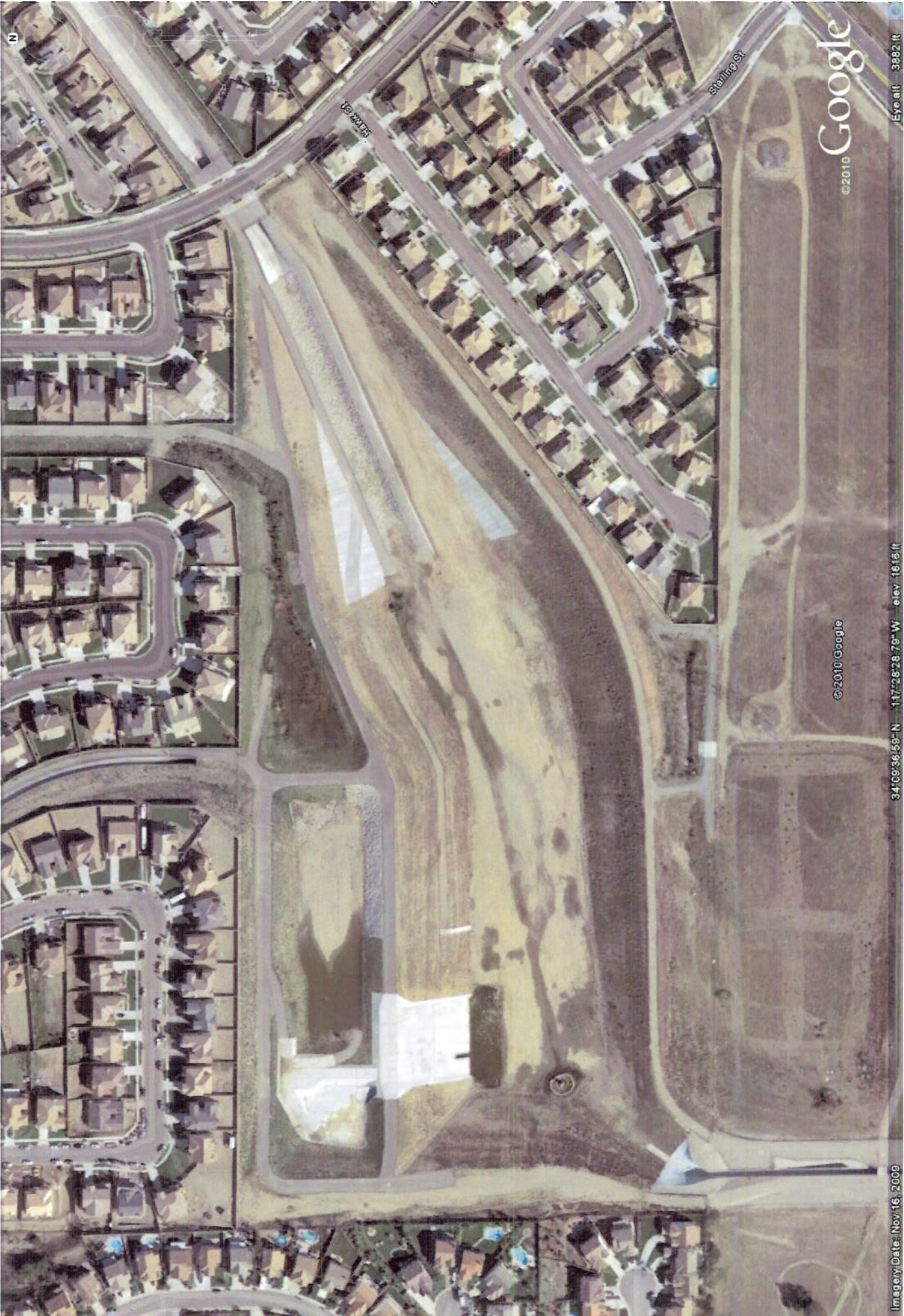






(11) Rich Basin North 240,050 feet and
East 2,158,200 feet





N

55th St

Starling St

©2010 Google

©2010 Google

Imagery Date: Nov 18, 2009

34°09'36.69" N 117°28'28.79" W elev 1616 ft

Eye alt 3892 ft