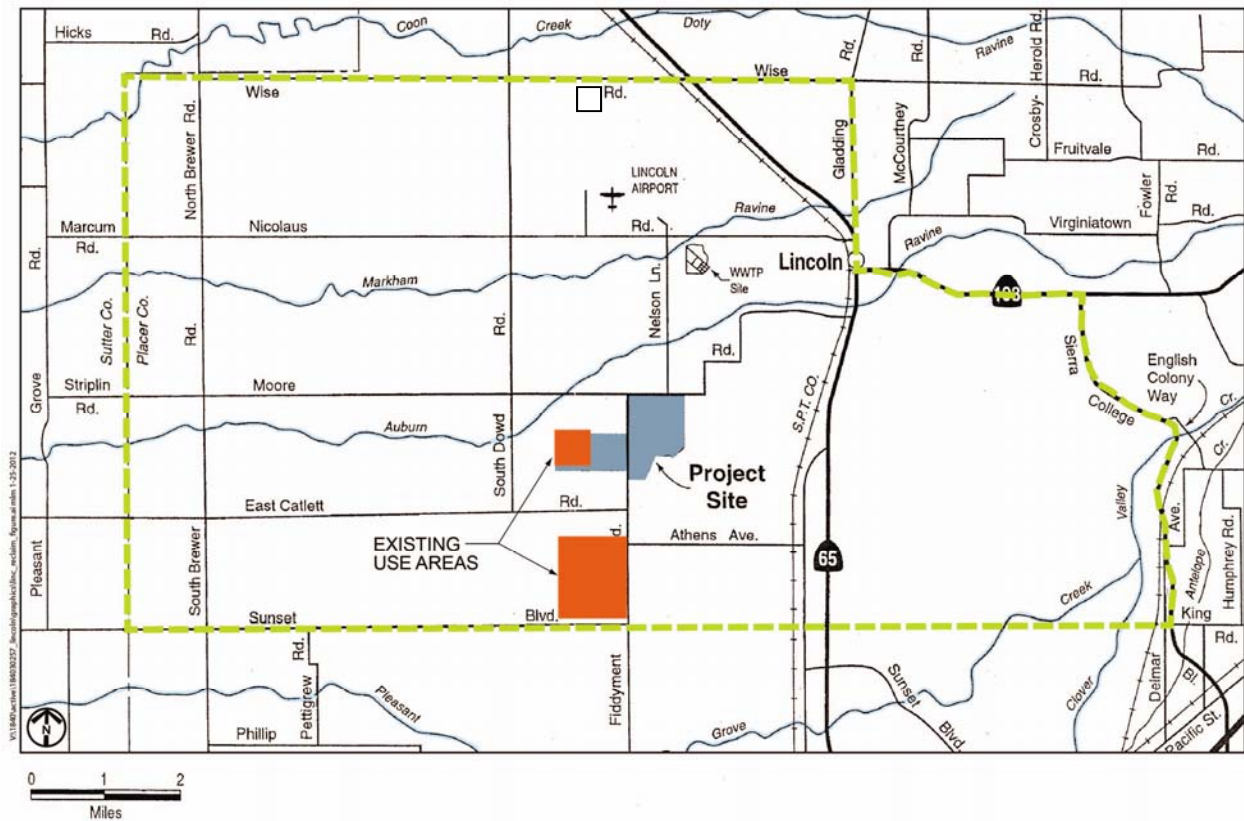


### Place of Use: Reclamation Lands to be Served by the Project

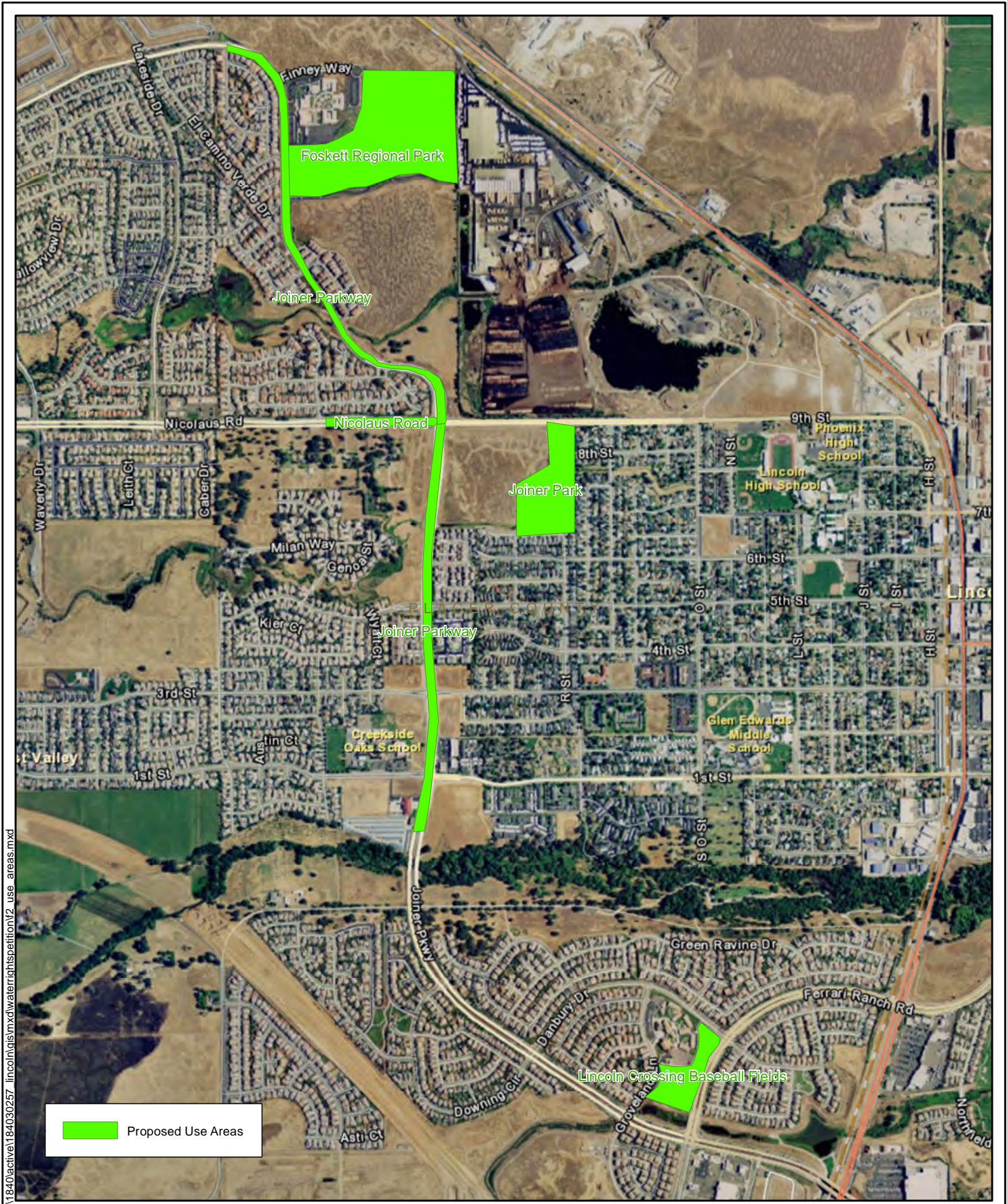
The City intends to reuse recycled water produced at their wastewater treatment and reclamation facility (WWTRF) on lands covered by the Master Reclamation Permit regulating these operations and uses (Order No. R5-2005 0040). Figure 1 illustrates potential use areas and existing use areas. The potential use areas are those lands within the green border shown in Figure 1.



**Figure 1: Master Reclamation Permit Use Area  
(Assessed in the WWTRF EIR, J&S, 1999).**

Over the next two years, the City intends to deliver recycled water to the locations identified Figure 2. Other locations will follow as pipelines are extended to implement the City of Lincoln Reclamation Master Plan.





V:\18403257\lincoln\GIS\mxd\water\rightspetition\2\_use\_areas.mxd

Project: 184030257; Sources: ESRI 2011, Stantec 2011; Updated: 12/12/2011



Stantec

Figure 2  
Proposed Use Areas