

**Attachment 5 – Photographs for Environmental Information for Petitions**

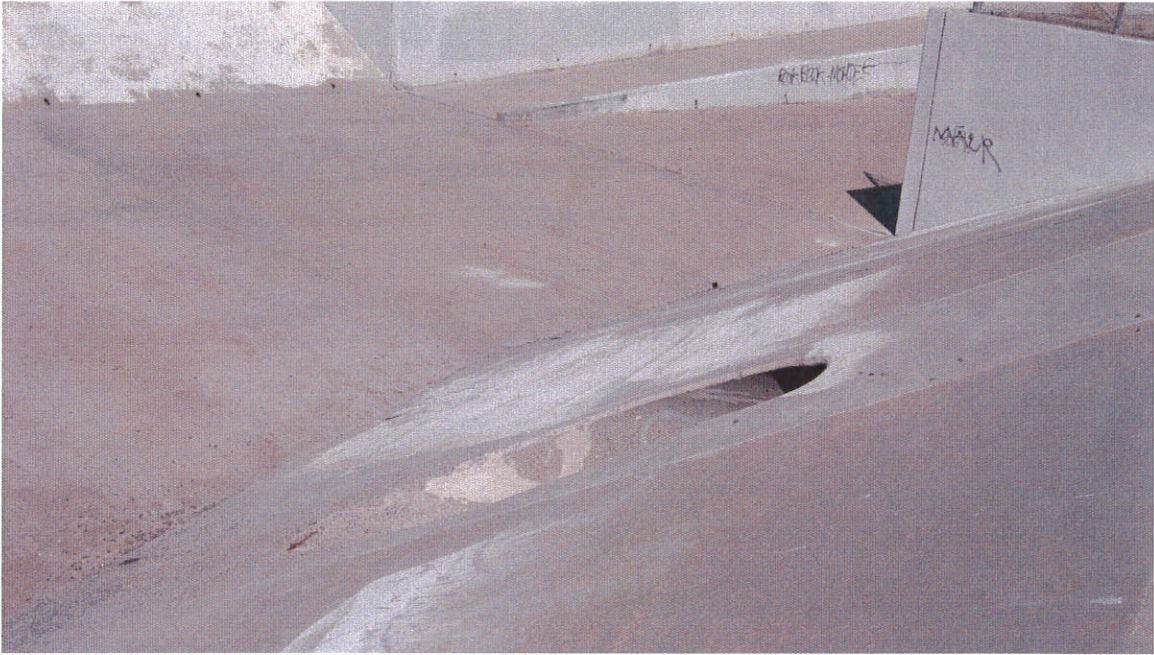


Photo No. 1 – Discharge location. It is at the high point on Temescal Creek. (9/29/14)



Photo No. 2 – Discharge Location and upstream of the discharge is the Wasson Channel (9/29/14)

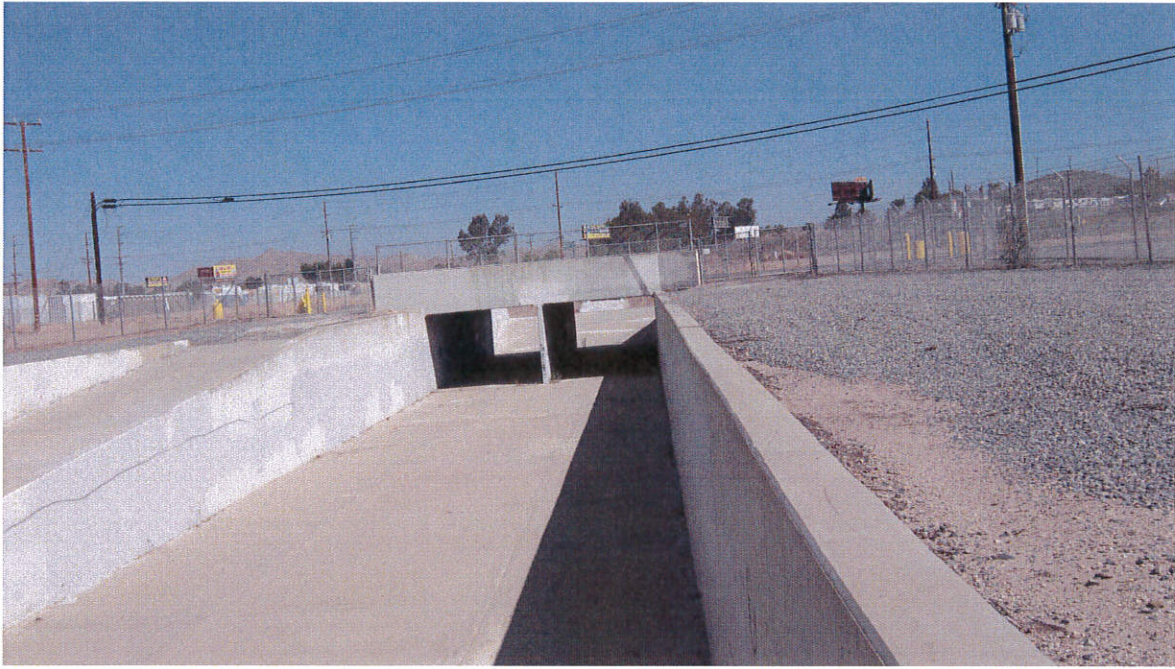


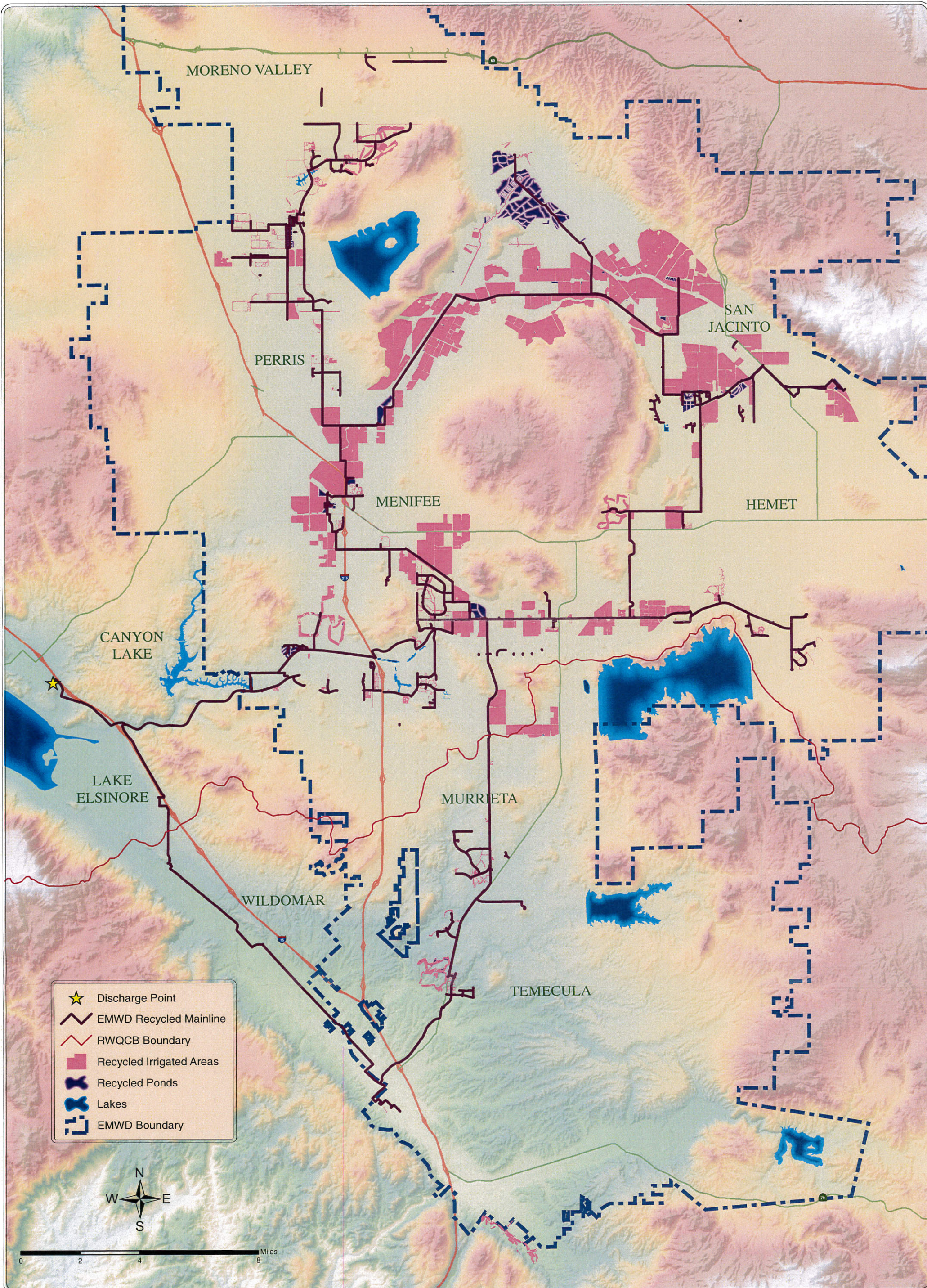
Photo No. 3 – Upstream of the discharge is the Wasson Channel (9/29/14)



Photo No. 4 – Downstream of the discharge. (9/29/14)



Photo No. 5 – Downstream of the discharge. (9/29/14)



APPROVED RECYCLED IRRIGATED AREA: 17,444 ACRES