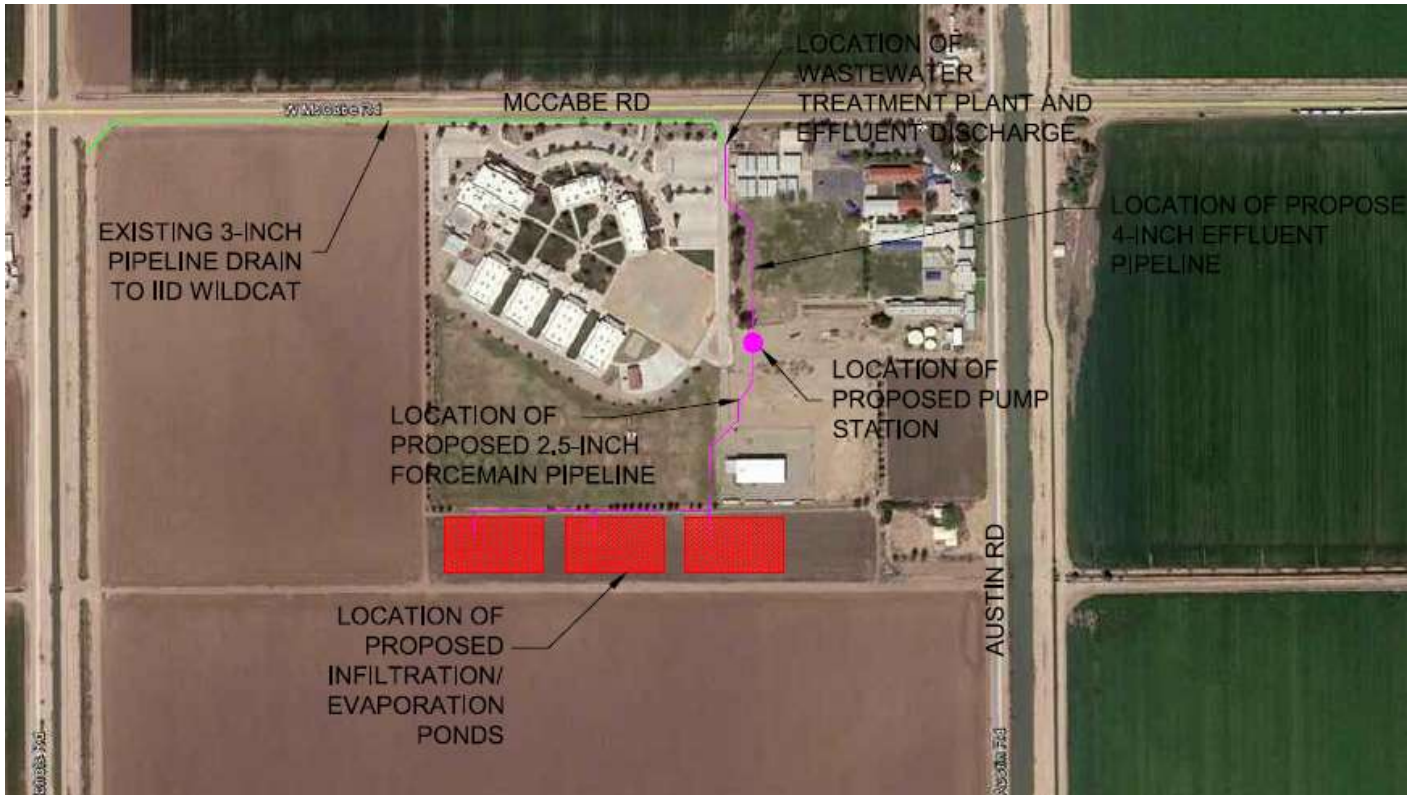


3. Map identifying the location of the point of discharge, area of use, and locaton of the wastewater facilities.



4. Table showing the monthly average discharge rate and the expected change.

Average Rate of Discharge (cubic feet per second)												
	Jan	Feb	Mar	Apr	May	Jun	Jul	Aug	Sep	Oct	Nov	Dec
Present:	0.0083	0.0095	0.0078	0.0076	0.0076	0.0021	0.0028	0.0040	0.0077	0.0062	0.0086	0.0088
Proposed:	0.0000	0.0000	0.0000	0.0000	0.0000	0.0000	0.0000	0.0000	0.0000	0.0000	0.0000	0.0000
Change:	0.0083	0.0095	0.0078	0.0076	0.0076	0.0021	0.0028	0.0040	0.0077	0.0062	0.0086	0.0088