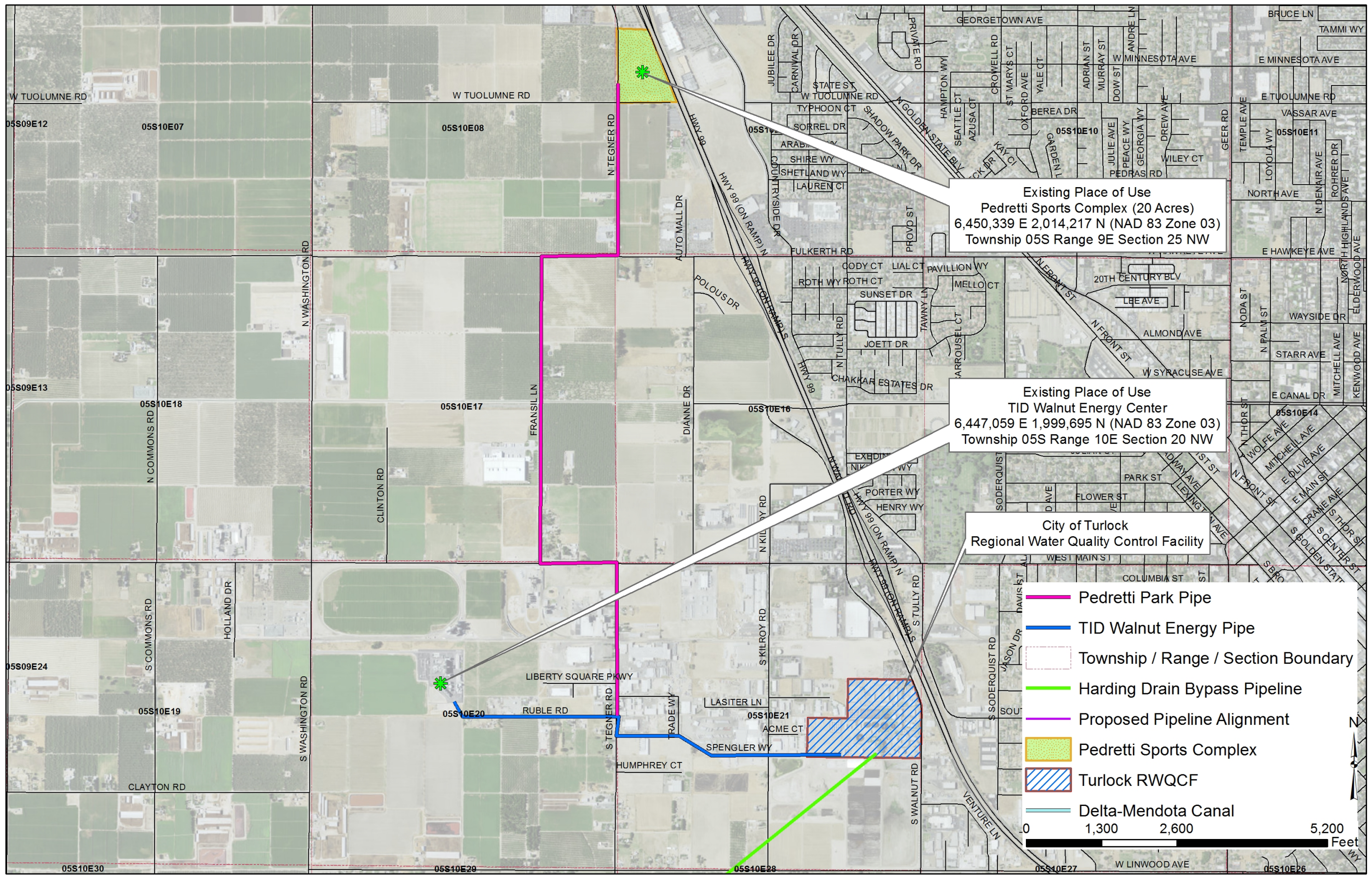


CITY OF TURLOCK
 WASTEWATER CHANGE PETITION
 EXISTING AND PROPOSED PLACE OF USE MAP
 PETITION # WW0088

DWG NO.
 DATE
 6 OCT 2015

FILENAME: Tur_Water_Rights_POD XREFS: X-RIGTBLK <--->



Existing Place of Use
 Pedretti Sports Complex (20 Acres)
 6,450,339 E 2,014,217 N (NAD 83 Zone 03)
 Township 05S Range 9E Section 25 NW

Existing Place of Use
 TID Walnut Energy Center
 6,447,059 E 1,999,695 N (NAD 83 Zone 03)
 Township 05S Range 10E Section 20 NW

City of Turlock
 Regional Water Quality Control Facility

- Pedretti Park Pipe
- TID Walnut Energy Pipe
- Township / Range / Section Boundary
- Harding Drain Bypass Pipeline
- Proposed Pipeline Alignment
- Pedretti Sports Complex
- Turlock RWQCF
- Delta-Mendota Canal



0" = 1"
 VERIFY SCALES
 BAR IS ONE INCH
 LONG ON FULL
 SIZE DRAWING.
 IF NOT ONE INCH
 LONG ON THIS
 DRAWING, ADJUST
 SCALES ACCORDINGLY

REV	DATE	BY	APVD	DESCRIPTION

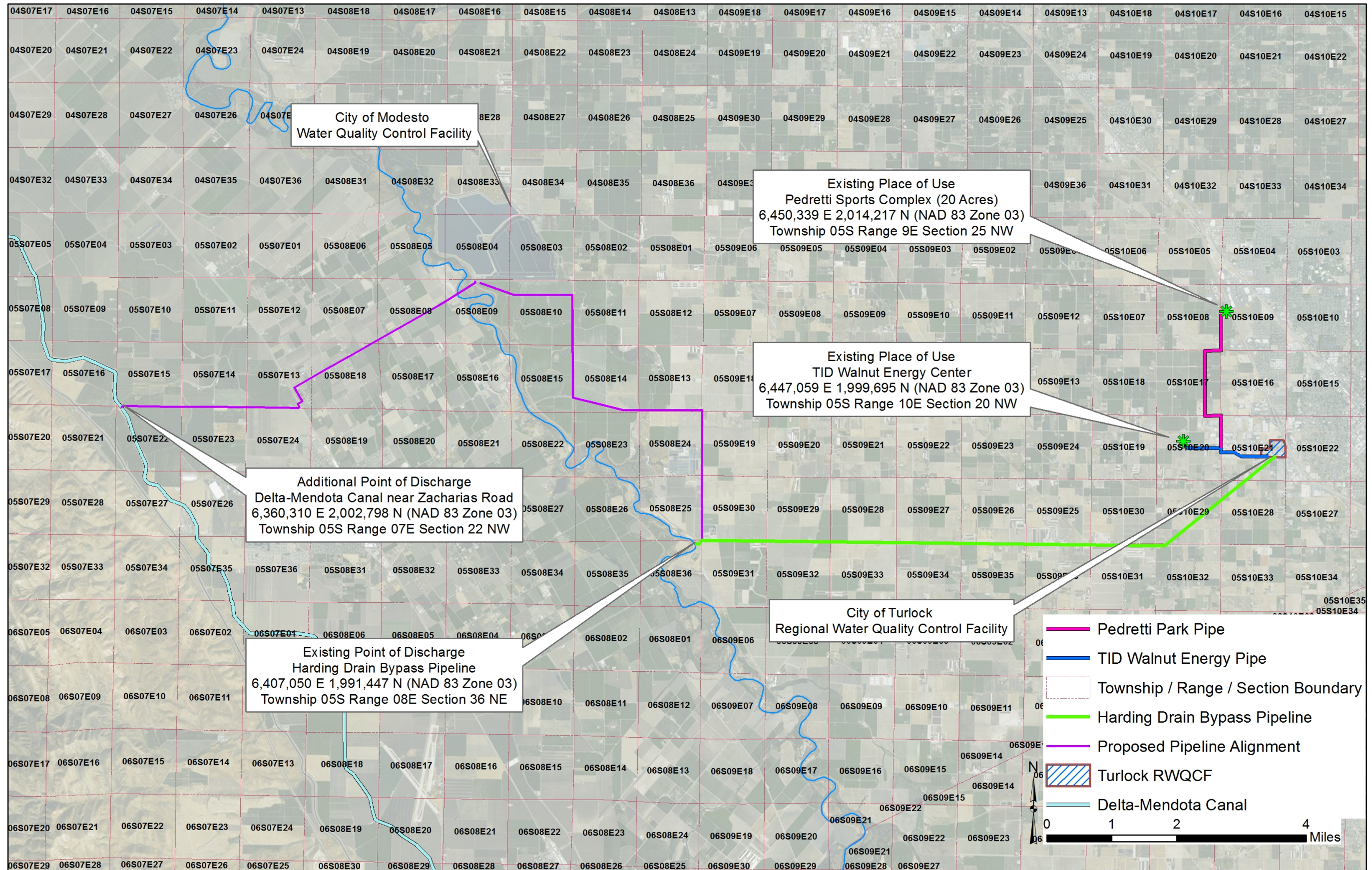
DESIGNED R. DOYLE
 DRAWN R. DOYLE
 CHECKED C. DEL BOCCIO



CITY OF TURLOCK
 WASTEWATER CHANGE PETITION
 EXISTING POINT OF USE MAP
 PETITION # WW0088

DWG NO
 DATE 6 OCT 2015

FILENAME: Tur_Water_Rights_POD XREFS: X=RMCTBLK Y=---



0" = 1"
 VERIFY SCALES
 BAR IS ONE INCH
 LONG ON FULL
 SIZE DRAWING.
 IF NOT ONE INCH
 LONG ON THIS
 DRAWING, ADJUST
 SCALES ACCORDINGLY

REV	DATE	BY	APVD	DESCRIPTION

DESIGNED R. DOYLE
 DRAWN R. DOYLE
 CHECKED C. DEL BOCCIO



CITY OF TURLOCK
 WASTEWATER CHANGE PETITION
 POINT OF DISCHARGE MAP
 PETITION # WW0088

DWG NO
 DATE 6 OCT 2015