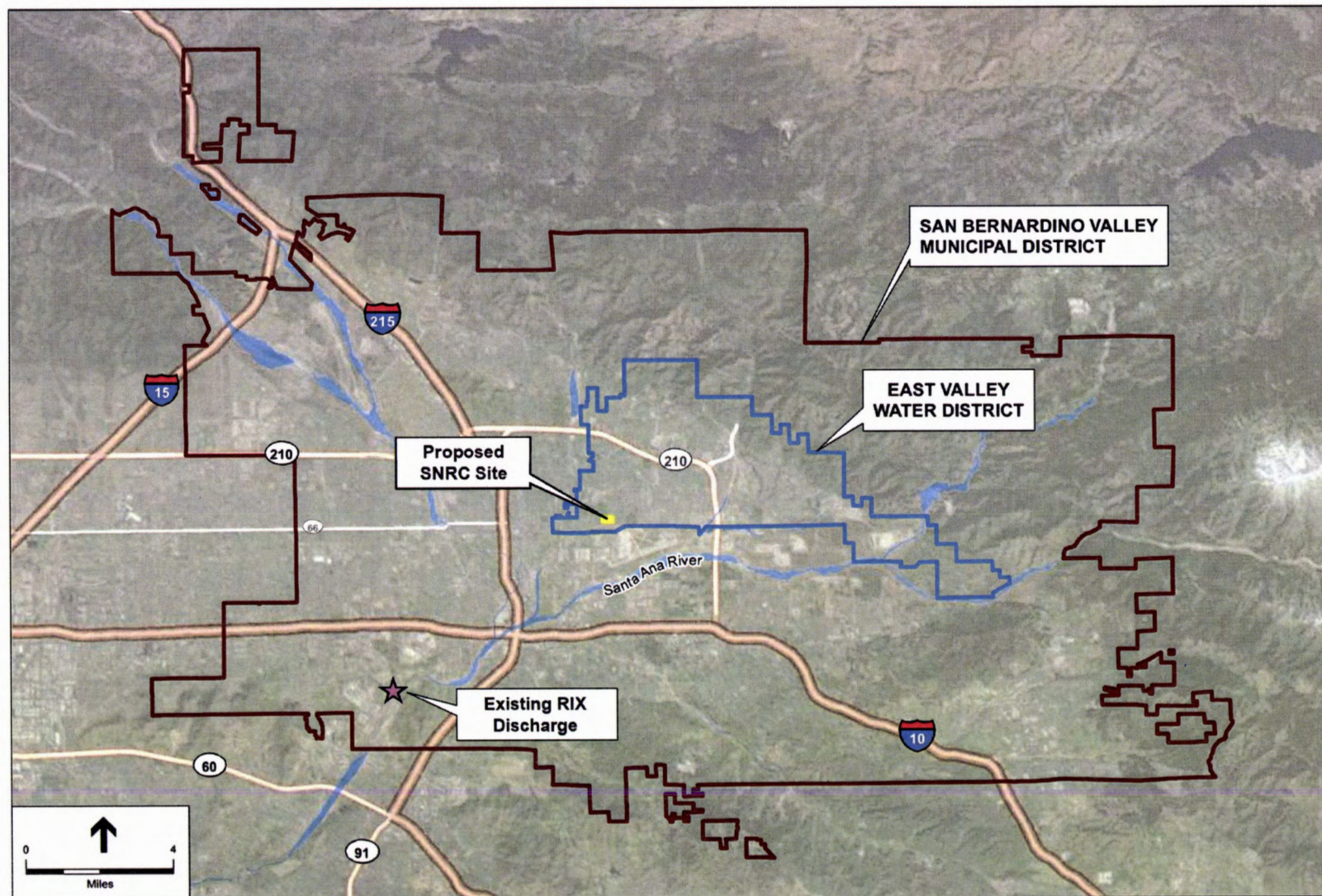


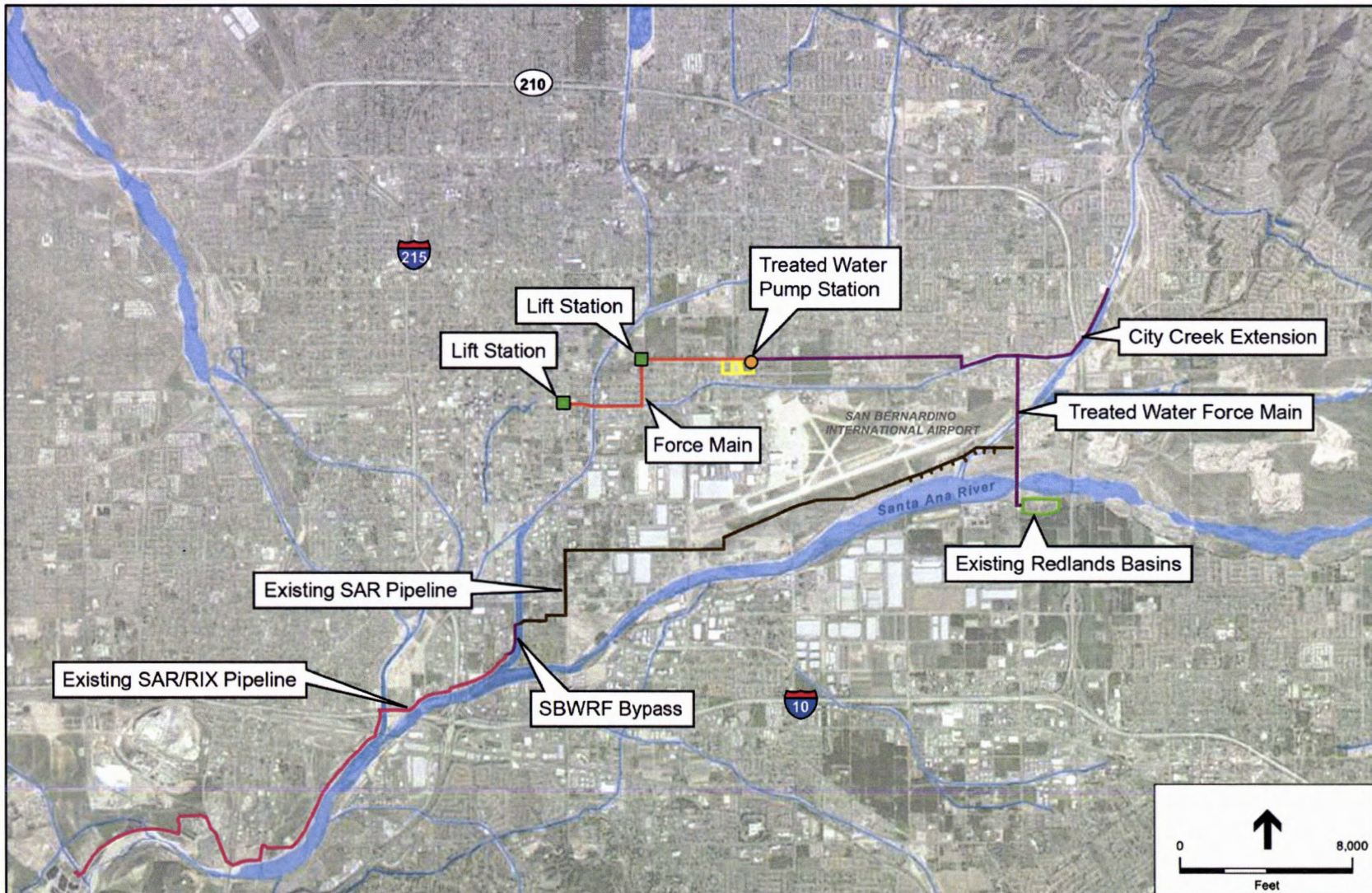
Attachment 1

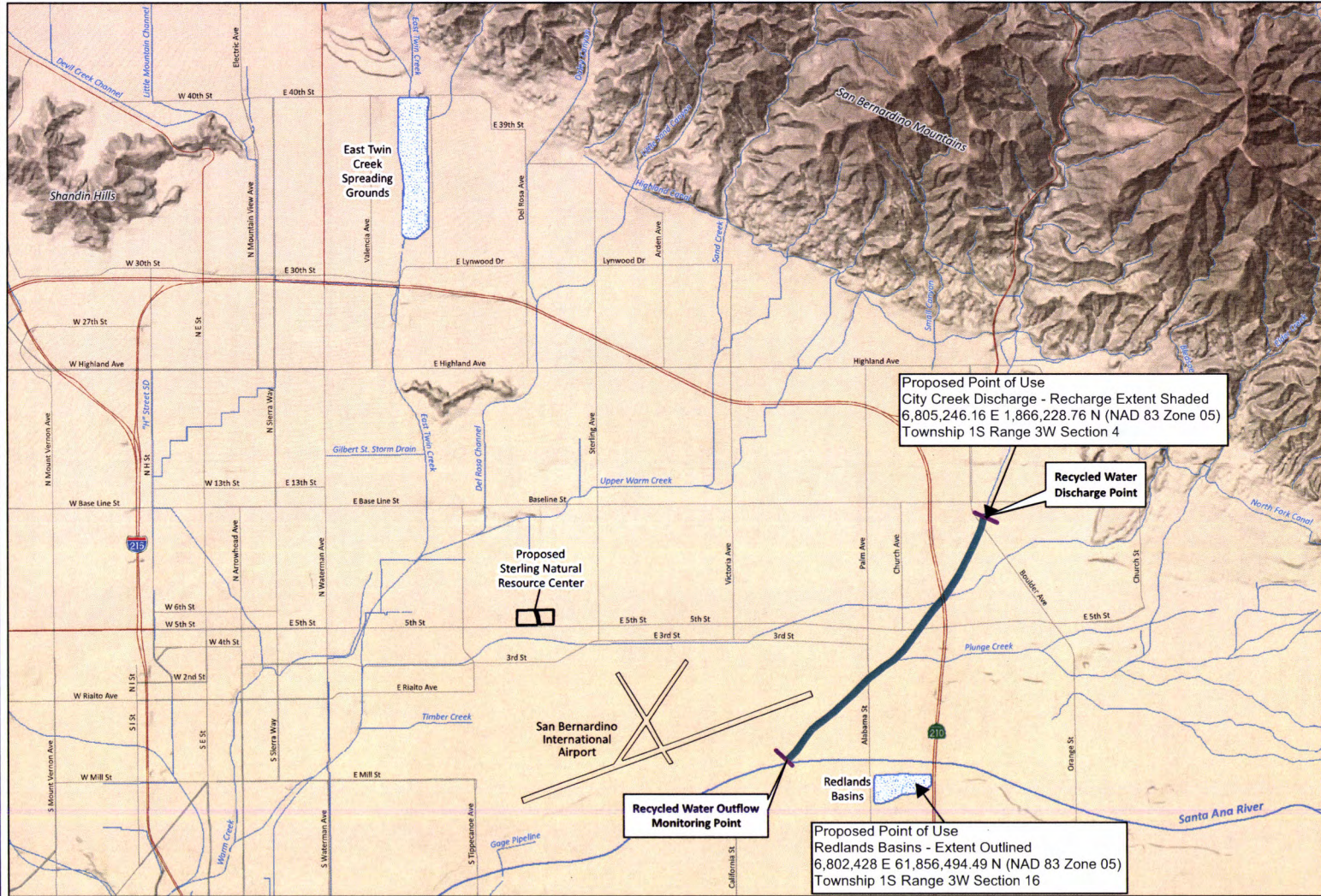
Figure 1-1: Vicinity Map






Attachment 6

Figure 1-2: Project Facilities





LOCATION OF PROPOSED PROJECT DISCHARGE FACILITIES

- EXPLANATION**
-  Proposed City Creek Discharge Facility
 -  Proposed Sterling Natural Resource Center
 -  Existing Recharge Basins or Proposed Project Discharge Facility

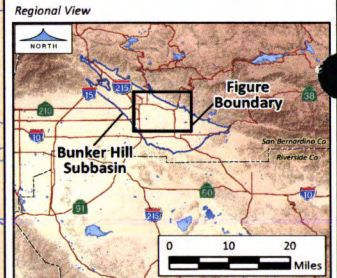
Proposed Point of Use
City Creek Discharge - Recharge Extent Shaded
6,805,246.16 E 1,866,228.76 N (NAD 83 Zone 05)
Township 1S Range 3W Section 4

Recycled Water Discharge Point

Proposed Sterling Natural Resource Center

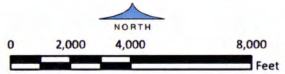
Recycled Water Outflow Monitoring Point

Proposed Point of Use
Redlands Basins - Extent Outlined
6,802,428 E 61,856,494.49 N (NAD 83 Zone 05)
Township 1S Range 3W Section 16



31-Mar-16

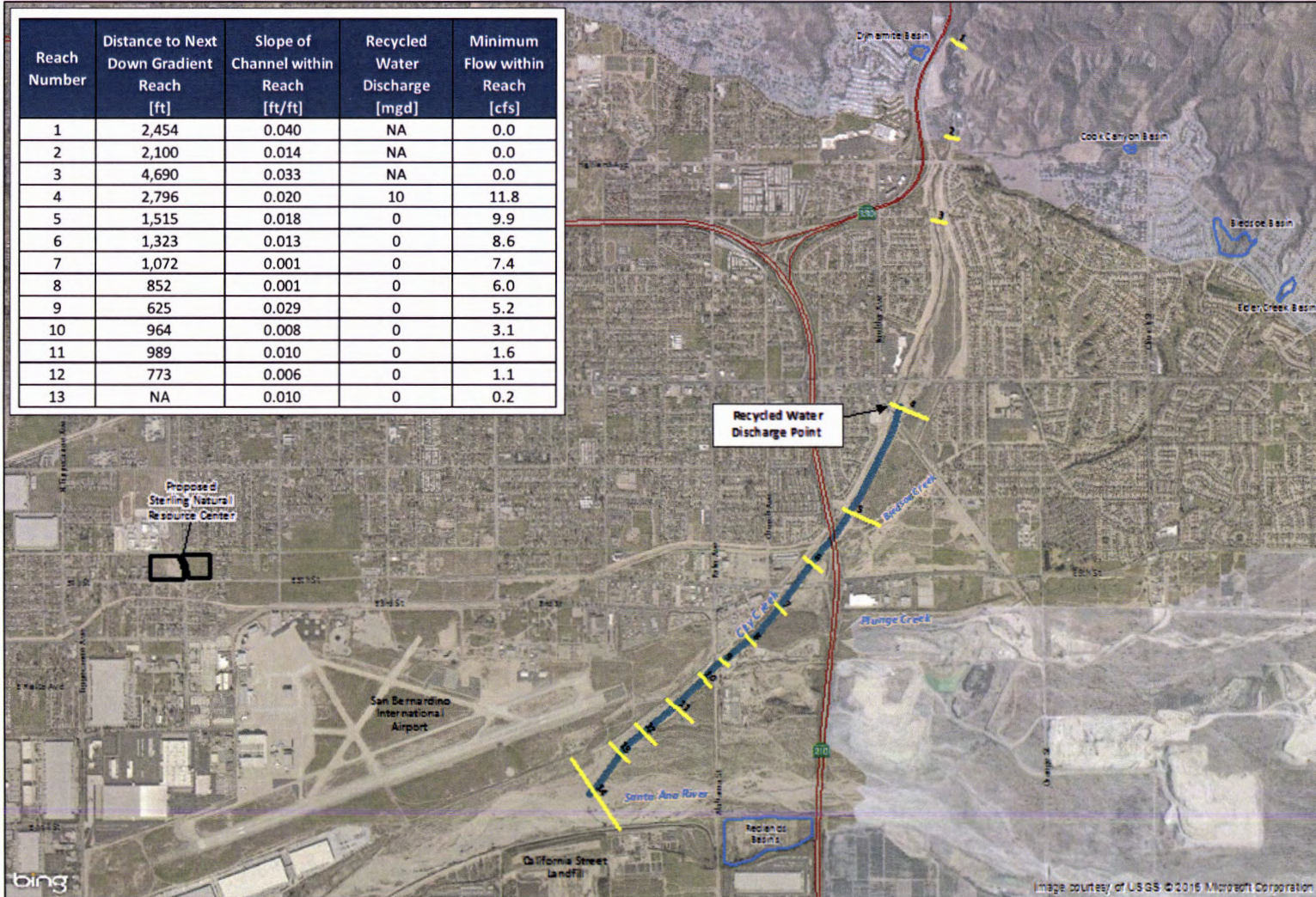
Prepared by: DB. Map Projection: State Plane 1983, Zone V.
© 2016, GEOSCIENCE Support Services, Inc. All rights reserved.



GEOSCIENCE
GEOSCIENCE Support Services, Inc.
P.O. Box 220, Claremont, CA 91711
Tel: (909) 451-6650 Fax: (909) 451-6638
www.gswater.com

Figure 1

Reach Number	Distance to Next Down Gradient Reach [ft]	Slope of Channel within Reach [ft/ft]	Recycled Water Discharge [mgd]	Minimum Flow within Reach [cfs]
1	2,454	0.040	NA	0.0
2	2,100	0.014	NA	0.0
3	4,690	0.033	NA	0.0
4	2,796	0.020	10	11.8
5	1,515	0.018	0	9.9
6	1,323	0.013	0	8.6
7	1,072	0.001	0	7.4
8	852	0.001	0	6.0
9	625	0.029	0	5.2
10	964	0.008	0	3.1
11	989	0.010	0	1.6
12	773	0.006	0	1.1
13	NA	0.010	0	0.2



RECYCLED WATER DISCHARGE INTO CITY CREEK

EXPLANATION

- 4 Stream Reach and Number
- Proposed City Creek Discharge Facility
- Proposed Sterling Natural Resource Center
- Existing Recharge Basins, Spreading Grounds, or Debris Basin

- Notes:
1. cfs - cubic feet per second
 2. mgd - million gallons per day

24-Feb-16

Prepared by: DB. Map Projection: State Plane 1983, Zone V.

© 2016, GEOSCIENCE Support Services, Inc. All rights reserved.

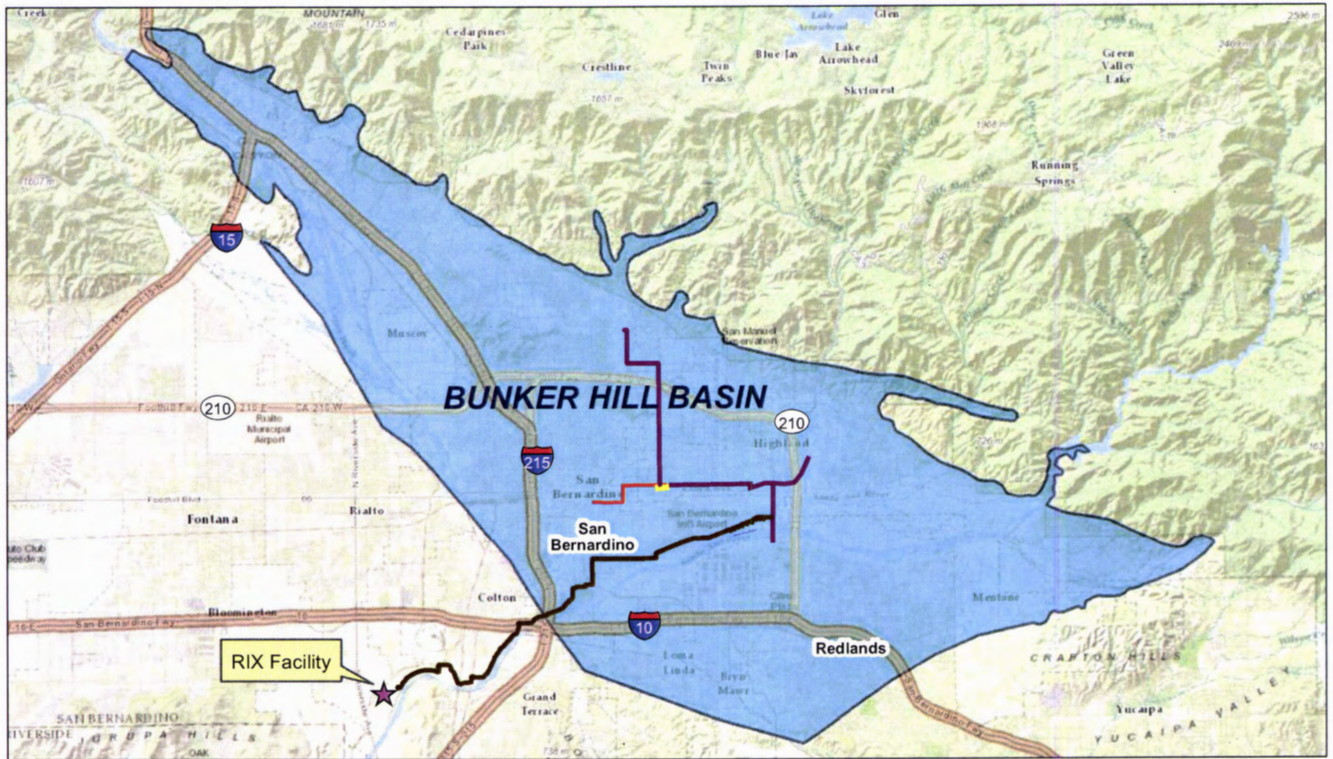


GEOSCIENCE

GEOSCIENCE Support Services, Inc.
 P.O. Box 220, Claremont, CA 91711
 Tel: (909) 451-6650 Fax: (909) 451-6638
 www.gsiwater.com

Figure 2

Attachment 7



SOURCE: ESRI

Sterling Natural Resource Center . 150005

Figure 1-2
Bunker Hill Groundwater Basin