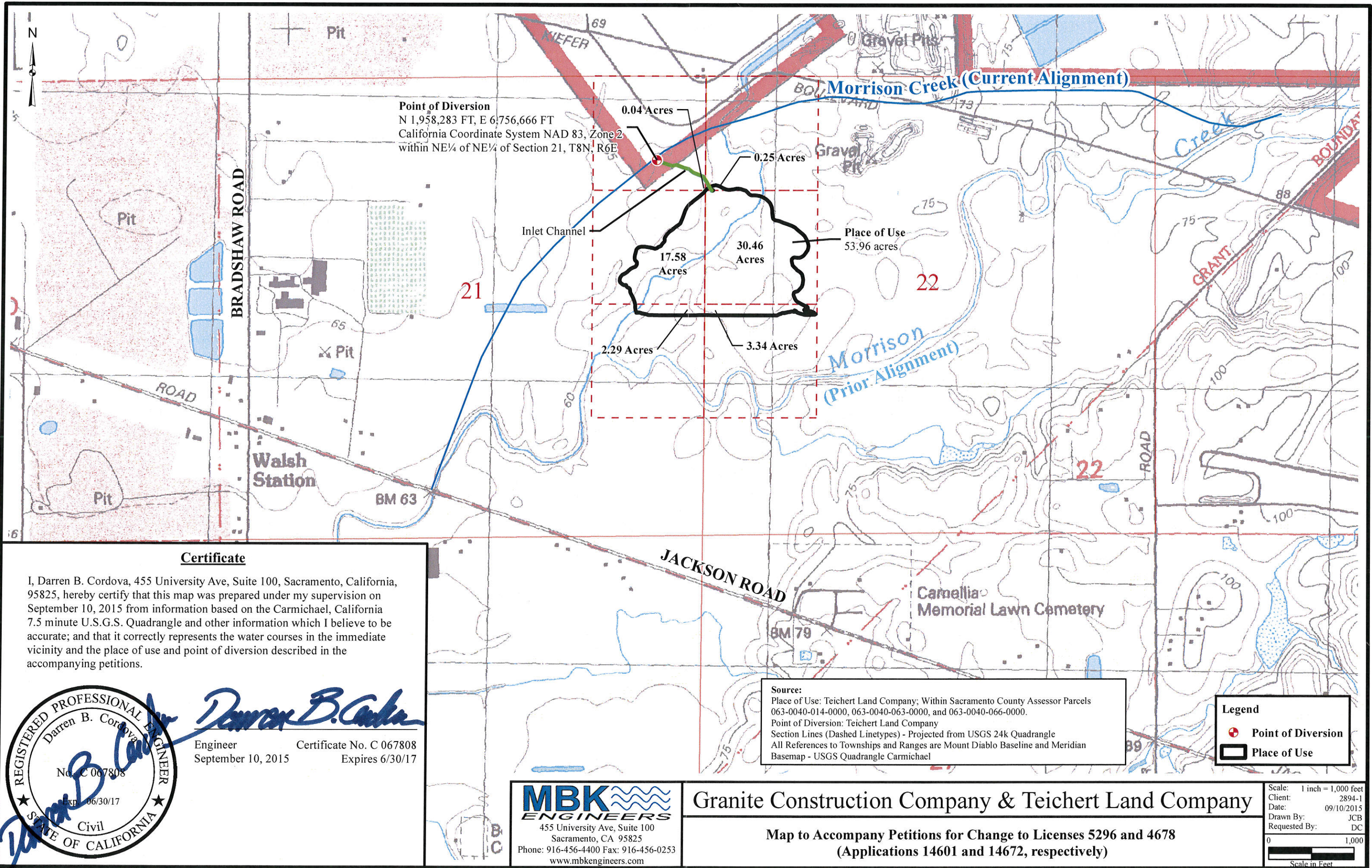


ATTACHMENT No. 3

**MAP ACCOMPANYING
PETITIONS FOR CHANGE TO
LICENSES 5296 AND 4678
(APPLICATIONS 14601 AND 14672, RESPECTIVELY)**



Point of Diversion
 N 1,958,283 FT, E 6,756,666 FT
 California Coordinate System NAD 83, Zone 2
 within NE¼ of NE¼ of Section 21, T8N, R6E

Certificate

I, Darren B. Cordova, 455 University Ave, Suite 100, Sacramento, California, 95825, hereby certify that this map was prepared under my supervision on September 10, 2015 from information based on the Carmichael, California 7.5 minute U.S.G.S. Quadrangle and other information which I believe to be accurate; and that it correctly represents the water courses in the immediate vicinity and the place of use and point of diversion described in the accompanying petitions.



Darren B. Cordova
 Engineer Certificate No. C 067808
 September 10, 2015 Expires 6/30/17

Source:
 Place of Use: Teichert Land Company; Within Sacramento County Assessor Parcels 063-0040-014-0000, 063-0040-063-0000, and 063-0040-066-0000.
 Point of Diversion: Teichert Land Company
 Section Lines (Dashed Linetypes) - Projected from USGS 24k Quadrangle
 All References to Townships and Ranges are Mount Diablo Baseline and Meridian
 Basemap - USGS Quadrangle Carmichael

Legend
 + Point of Diversion
 [] Place of Use

MBK ENGINEERS
 455 University Ave, Suite 100
 Sacramento, CA 95825
 Phone: 916-456-4400 Fax: 916-456-0253
 www.mbkengineers.com

Granite Construction Company & Teichert Land Company

**Map to Accompany Petitions for Change to Licenses 5296 and 4678
 (Applications 14601 and 14672, respectively)**

Scale: 1 inch = 1,000 feet
 Client: 2894-1
 Date: 09/10/2015
 Drawn By: JCB
 Requested By: DC
 0 1,000
 Scale in Feet