





T:\sanitation\sonoma_valley_csd\recycled_water\0086C001\RWPPotentialPlaceOfUseOverview.mxd 1/20/2017

Legend

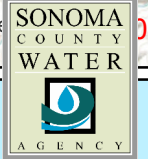
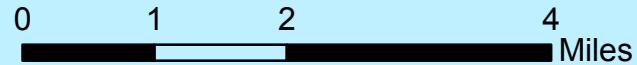
-  Township/Range
-  Section
-  SVCSD Boundary
-  Recycled Water Potential Place Of Use Boundary

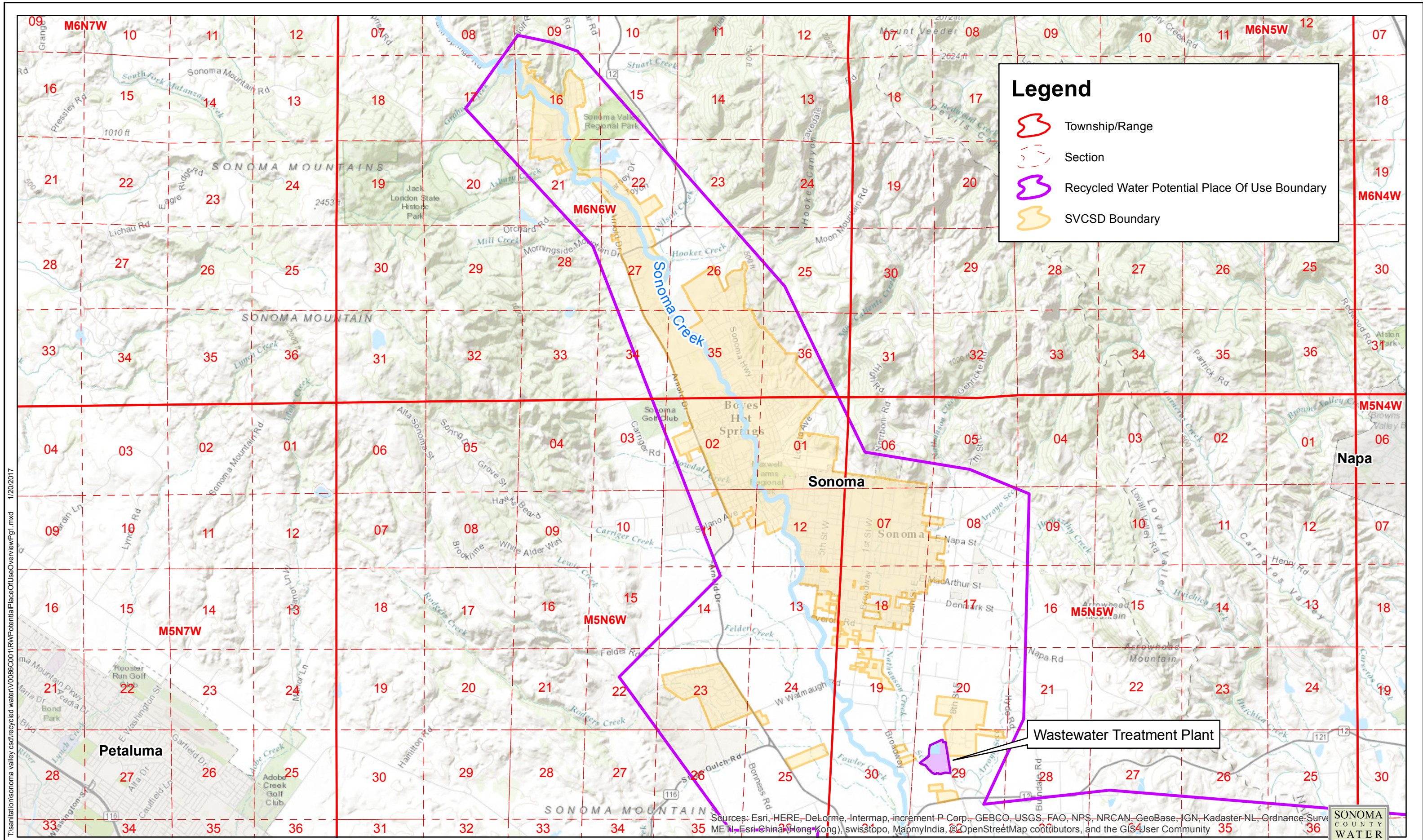
Sources: Esri, HERE, DeLorme, Intermap, increment P Corp., GEBCO, USGS, FAO, NPS, NRCAN, GeoBase, IGN, Kadaster NL, Ordnance Survey, METI, Esri China (Hong Kong), swisstopo, MapmyIndia, © OpenStreetMap contributors, and the GIS User Community

Recycled Water Potential Place of Use (Overview)





Sonoma Valley Recycled Water and Runoff Study

DISCLAIMER
 This map document and associated data are distributed for informational purposes only "AS-IS" at the published scale and provided without warranty of any kind expressed or implied. The positional accuracy of the data is approximate and not intended to represent survey map accuracy. The Sonoma County Water Agency assumes no responsibility arising from use of this information.





Legend

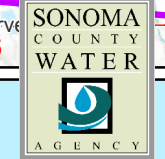
-  Township/Range
-  Section
-  Recycled Water Potential Place Of Use Boundary
-  SVCS D Boundary

T:\sanitation\sonoma_valley\csd\recycled_water\0086C001\RWPPotentialPlaceOfUseOverviewPg1.mxd 1/20/2017

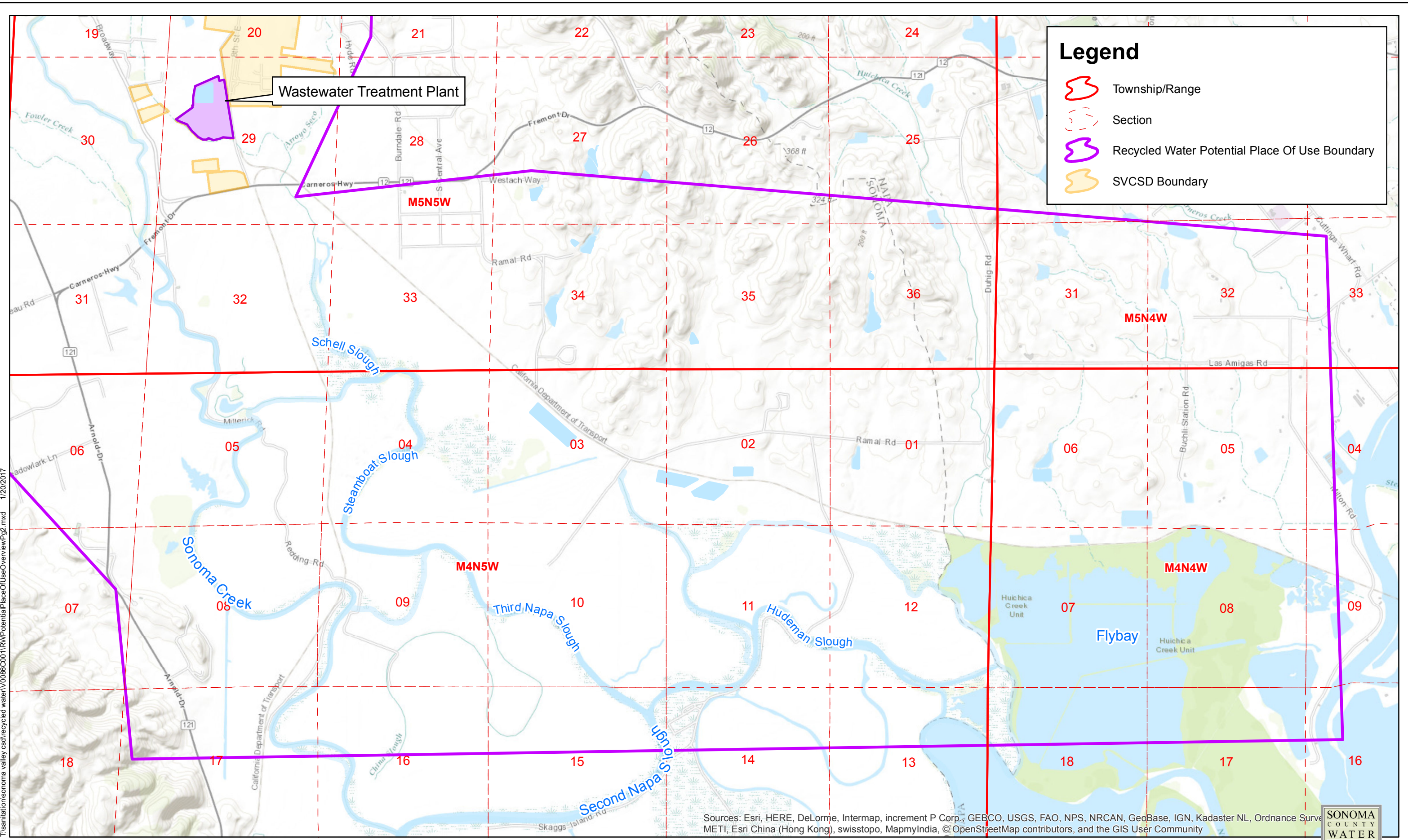
Recycled Water Potential Place of Use (Page 1)

Sonoma Valley Recycled Water and Runoff Study





DISCLAIMER
 This map document and associated data are distributed for informational purposes only "AS-IS" at the published scale and provided without warranty of any kind expressed or implied. The positional accuracy of the data is approximate and not intended to represent survey map accuracy. The Sonoma County Water Agency assumes no responsibility arising from use of this information.



Sources: Esri, HERE, DeLorme, Intermap, increment P Corp., GEBCO, USGS, FAO, NPS, NRCAN, GeoBase, IGN, Kadaster NL, Ordnance Survey, Esri, China (Hong Kong), swisstopo, MapmyIndia, © OpenStreetMap contributors, and the GIS User Community



Legend

-  Township/Range
-  Section
-  Recycled Water Potential Place Of Use Boundary
-  SVCSD Boundary

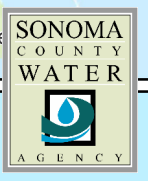
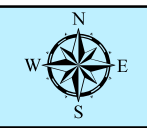
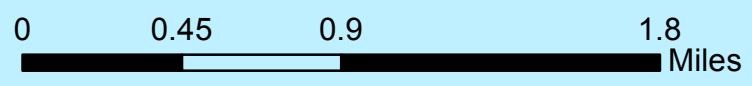
T:\sanitation\sonoma_valley_csd\recycled_water\0086C001\1\RPWPotentialPlaceOfUseOverviewPg2.mxd 1/20/2017

Sources: Esri, HERE, DeLorme, Intermap, increment P Corp., GEBCO, USGS, FAO, NPS, NRCAN, GeoBase, IGN, Kadaster NL, Ordnance Survey, Esri China (Hong Kong), swisstopo, MapmyIndia, © OpenStreetMap contributors, and the GIS User Community

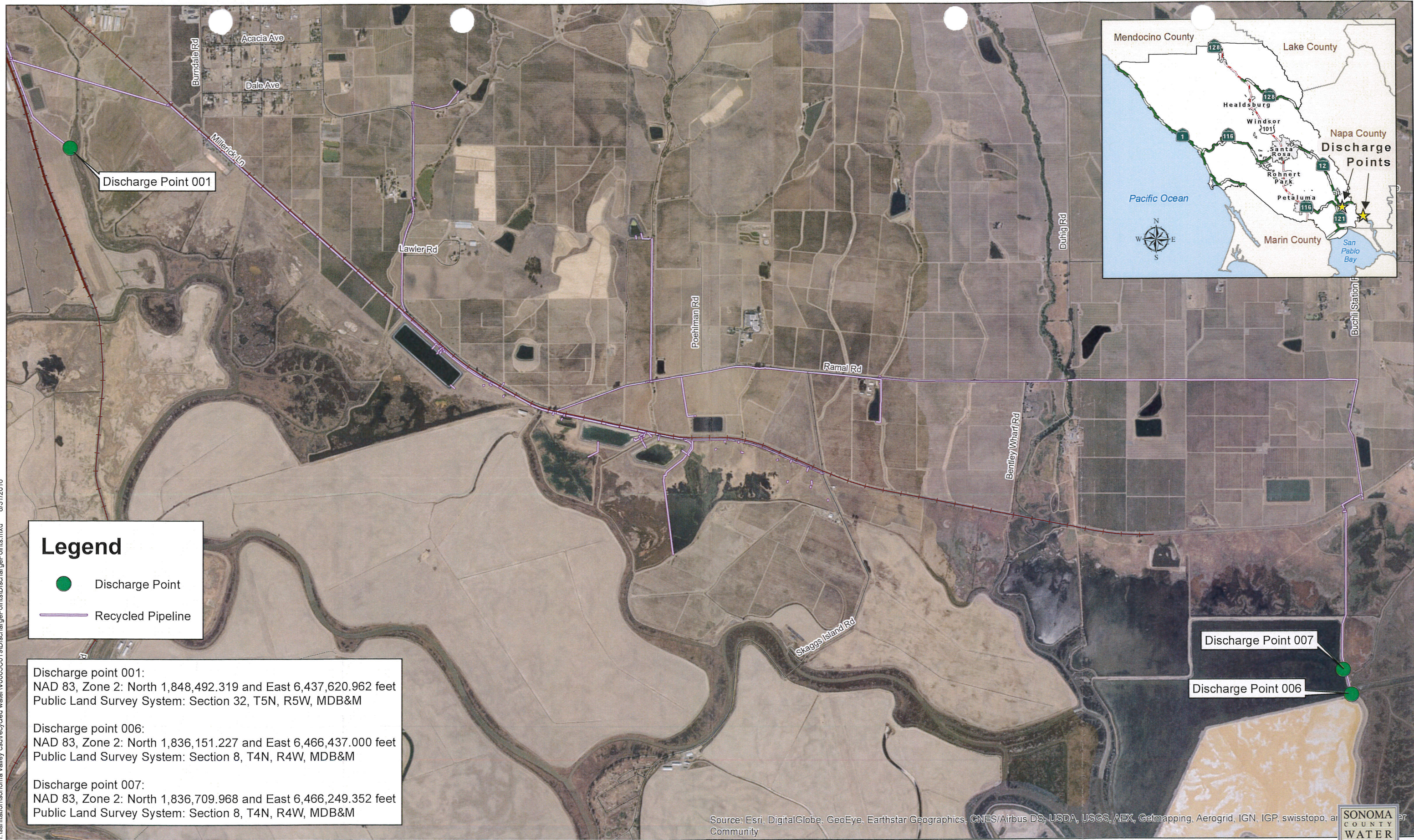
Recycled Water Potential Place of Use (Page 2)

Sonoma Valley Recycled Water and Runoff Study

DISCLAIMER
 This map document and associated data are distributed for informational purposes only "AS-IS" at the published scale and provided without warranty of any kind expressed or implied. The positional accuracy of the data is approximate and not intended to represent survey map accuracy. The Sonoma County Water Agency assumes no responsibility arising from use of this information.



T:\sanitation\sonoma_valley_csd\recycled_water\00050019\DischargePoints\DischargePoints.mxd 9/31/2016



Legend

- Discharge Point
- Recycled Pipeline

Discharge point 001:
 NAD 83, Zone 2: North 1,848,492.319 and East 6,437,620.962 feet
 Public Land Survey System: Section 32, T5N, R5W, MDB&M

Discharge point 006:
 NAD 83, Zone 2: North 1,836,151.227 and East 6,466,437.000 feet
 Public Land Survey System: Section 8, T4N, R4W, MDB&M

Discharge point 007:
 NAD 83, Zone 2: North 1,836,709.968 and East 6,466,249.352 feet
 Public Land Survey System: Section 8, T4N, R4W, MDB&M

Source: Esri, DigitalGlobe, GeoEye, Earthstar Geographics, CNES/Airbus DS, USDA, USGS, AEX, Getmapping, Aerogrid, IGN, IGP, swisstopo, and the GIS User Community

SVCSD Discharge Locations
 Discharge Points 001, 006, 007

DISCLAIMER
 This map document and associated data are distributed for informational purposes only "AS-IS" at the published scale and provided without warranty of any kind expressed or implied. The positional accuracy of the data is approximate and not intended to represent survey map accuracy. The Sonoma County Water Agency assumes no responsibility arising from use of this information.

