



Reference: 015011.400

**Loleta Community Services District
Wastewater Treatment Facility and Effluent Disposal Improvement Project
Project Description
May 23, 2018**

Applicant

Attention: Marcus Drumm, General Manager
Loleta Community Services District
P.O. Box 236
Loleta, CA 95551
Telephone: 707-733-1717
Fax: 707-733-1781
email: loletacsd@att.net

Agent

Attention: Stein Coriell, Planner
SHN
1062 G St., Suite "I"
Arcata, CA 95521-5800
Telephone: 707-822-5785
Fax: 707-822-5786
email: scoriell@shn-engr.com

Owner

Attention: Marcus Drumm, General Manager
Loleta Community Services District
P.O. Box 236
Loleta, CA 95551
Telephone: 707-733-1717
Fax: 707-733-1781
email: loletacsd@att.net

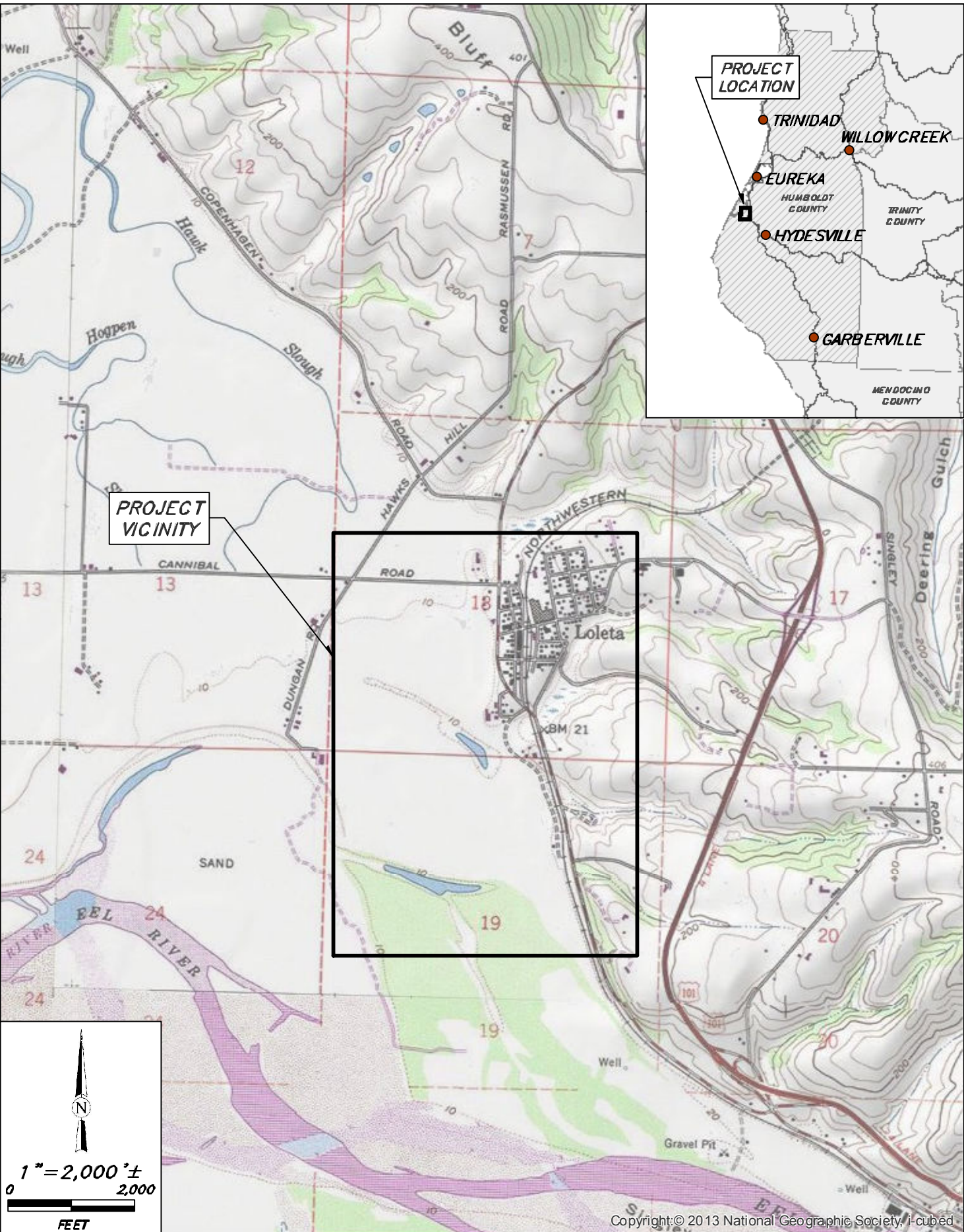
Project Location

The proposed project is located in the town of Loleta in Humboldt County, California (see Figure 1 for vicinity map and Figure 2 for project location map). The wastewater treatment facility (WWTF) is located on Assessor's parcel number (APN) 309-211-006. The wastewater discharge pipe is located on APNs 309-211-007, 309-211-002, and 309-251-002. The site proposed for land application of treated effluent is on APN 309-191-012 (Figure 2).

The project is located entirely within the Coastal Zone, with parts located in both "Appeal" and "State" coastal development permit (CDP) jurisdictions. The WWTF is within "Appeal" CDP jurisdiction. The wastewater discharge pipe and land application site are located partially within both "Appeal" and "State" CDP jurisdictions. Therefore, the CDP permit process is proposed to be consolidated to the state.



Path: \\Eureka\Projects\2015\015011-Loleta-CSD-WWTF\400-C-EQA\GIS\PROJ_MXD\Figure1_ProjectVicinityMap.mxd



Copyright:© 2013 National Geographic Society, I-cubed

SHN
Consulting Engineers
& Geologists, Inc.

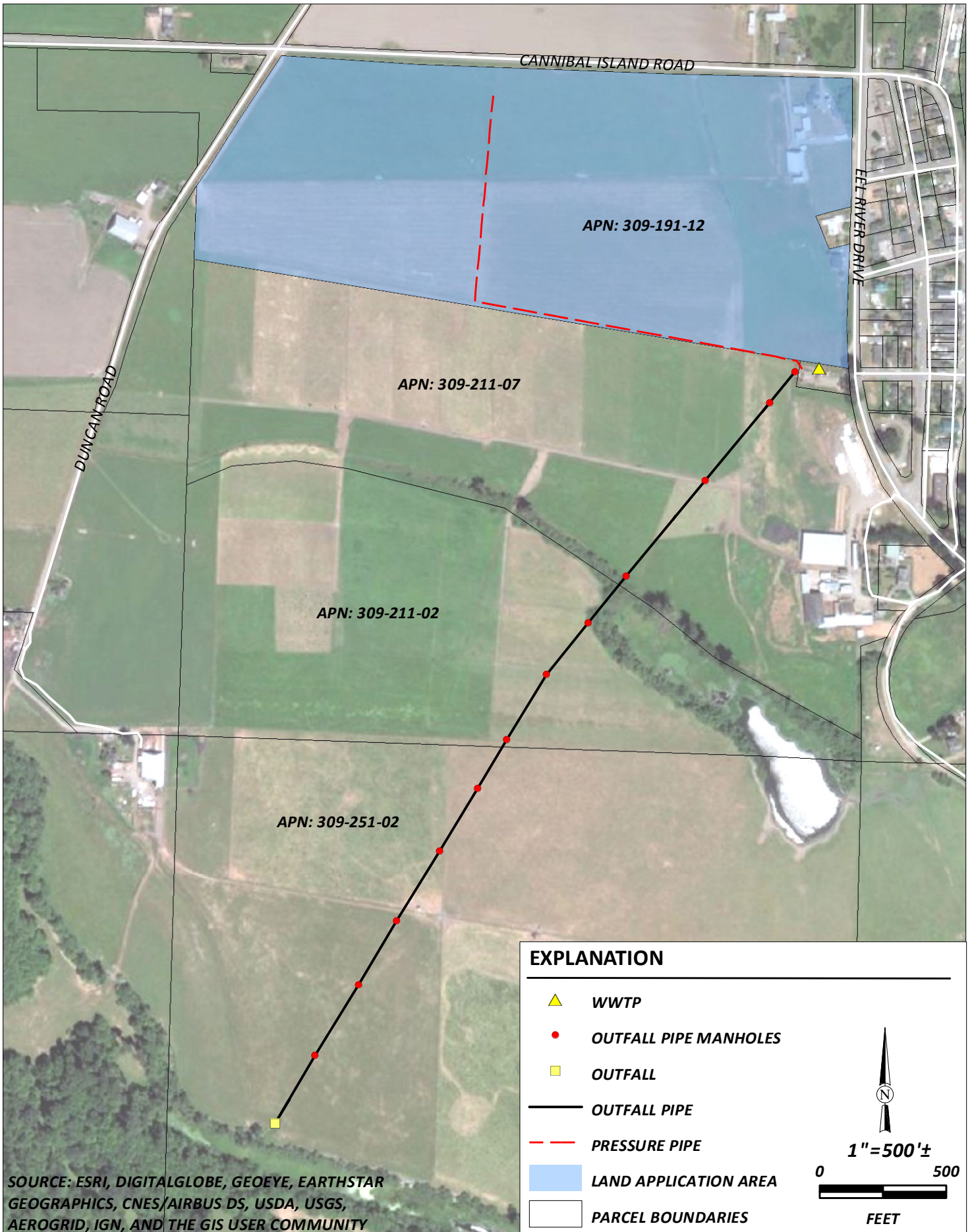
Loleta CSD
Project Description
Loleta, California

June 2017

Project Vicinity Map
SHN 015011

Figure 1

Path: \\Eureka\Projects\2015\015011-Loleta-CSD-WWTF\400-CEQA\GIS\PROJ_MXD\WWTF\Rev01\Fig2_Project_Location.mxd User Name: cswanson



SOURCE: ESRI, DIGITALGLOBE, GEOEYE, EARTHSTAR GEOGRAPHICS, CNES/AIRBUS DS, USDA, USGS, AEROGRID, IGN, AND THE GIS USER COMMUNITY

EXPLANATION	
	WWTP
	OUTFALL PIPE MANHOLES
	OUTFALL
	OUTFALL PIPE
	PRESSURE PIPE
	LAND APPLICATION AREA
	PARCEL BOUNDARIES

1" = 500'±
0 500
FEET

	Loleta CSD Project Description Loleta, California	Project Location SHN 015011.400
	March 2018	Fig2_Project_Location

Existing Conditions

Wastewater Treatment Facility. Loleta Community Services District (LCSD, the District) maintains and operates a wastewater treatment system that serves the community of Loleta. The overall wastewater treatment system consists of a collection system, WWTF, and year-round effluent disposal to a wetland tributary to the Eel River (Figure 2). The location of the WWTF is shown in Figures 2 and 3. LCSD's existing WWTF is an activated sludge treatment facility designed to operate in extended aeration mode. The WWTF was built in 1956 and is now more than 60 years old. The facility consists of a single series process train, including headworks, aeration tank, secondary clarifier, and chlorine contact basin. The WWTF discharges to surface waters, and the District is required to obtain a National Pollutant Discharge Elimination System (NPDES) permit that sets forth specific discharge requirements to ensure protection of public health, environmental health, and water quality. This permit is renewed every five years by the North Coast California Regional Water Quality Control Board (RWQCB). At each renewal, the permit may incorporate new treatment objectives and discharge standards that require an upgrade or modification to the facility to meet new regulatory requirements.

Due to the existing WWTF's inability to meet permit requirements implemented with the most recent NPDES permit (Order No. R1-2014-0013 adopted May 8, 2014) the RWQCB adopted Cease and Desist Order (CDO) R1-2015-0008, which instituted increased interim limits for constituents the current plant is unable to treat effectively, and required the District to upgrade or replace the existing WWTF to achieve compliance with all limits in Order No. R1-2014-0013 by December 31, 2019.

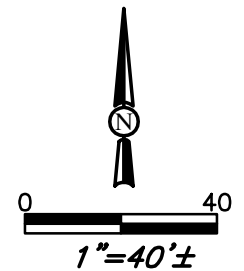
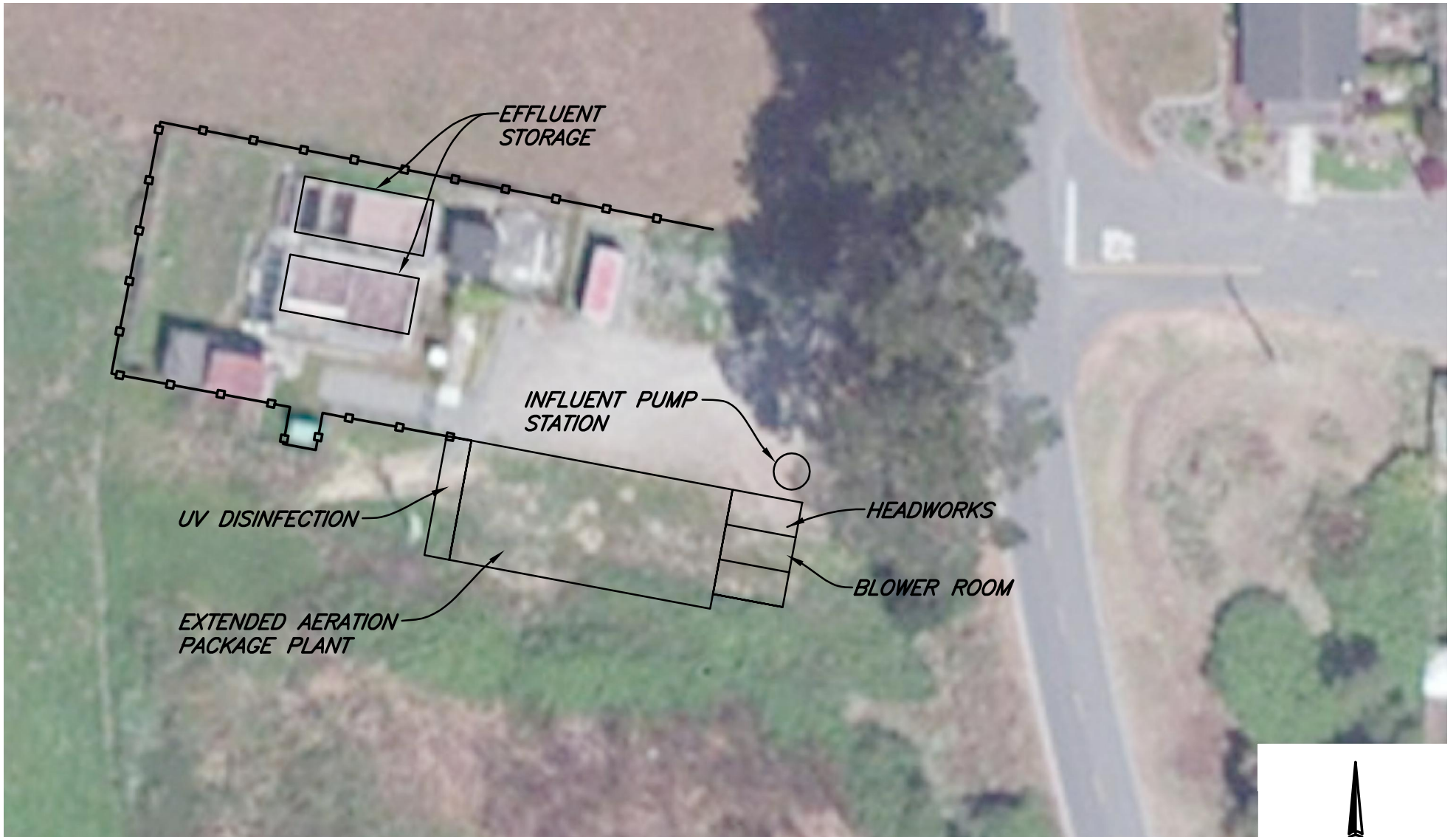
Wastewater Discharge Pipe. Currently, treated wastewater effluent is discharged from the WWTF by gravity flow and is conveyed, along with stormwater, through a subsurface pipe to a wetland. The wetland discharges directly to the Eel River during wet weather conditions. The discharge pipe runs southwest from the WWTF approximately 3,700 feet to the discharge point. The discharge to the wetland occurs at a point on the north bank of the Eel River approximately one-quarter mile south of Duncan Road. The location of the WWTF, discharge pipe, and outfall location are shown in Figure 2.


Under the District's current NPDES permit, discharges of treated effluent to the Eel River and its tributaries, including wetlands, are prohibited from May 15 through September 30 each year. From October 1 through May 14, discharges of wastewater are limited to one percent of the flow of the receiving water. Compliance with this limitation is evaluated based on flow measurements at the upstream receiving water monitoring location in the stormwater conveyance pipe that discharges to the wetland. Currently, effluent discharges to the wetland occur year-round and are in violation of the Basin Plan's seasonal discharge prohibition.

Effluent Disposal. Currently, treated wastewater effluent is discharged from the WWTF by gravity flow and is conveyed, along with stormwater, through the subsurface wastewater discharge pipe described above. As described above, the pipe discharges to a wetland that discharges directly to the Eel River during wet weather conditions.

Proposed Project

LCSD is planning to modify its WWTF and effluent discharge system to meet the terms of a new NPDES permit, including waste discharge requirements (WDR) for discharge to land (groundwater becomes the receiving water instead of surface water; SHN, 2016). The application for the new permit has been



	Loleta CSD Project Description Loleta, California		Proposed Treatment Alternative Extended Aeration SHN 015011	
	June 2017	015011-PROP-TREAT-EXT-AIR-3	Figure 3	

submitted to the RWQCB, and new discharge requirements will take effect on May 31, 2019. Current and future effluent limitations for pollutants cannot be met by the existing wastewater treatment and disposal process. The initial planning and design work has been completed using grant funding from the state Revolving Fund Small Communities Grant Program. The proposed project includes a wastewater treatment facility component, rehabilitation of the existing waste discharge pipe, and land application of treated effluent component.

Wastewater Treatment Facility. The proposed influent pump station at the WWTF includes submersible sewage pumps with variable frequency drives placed in a wet well.

Proposed preliminary treatment at the WWTF includes pre-screening in the form of a rotary drum screen.

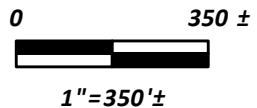
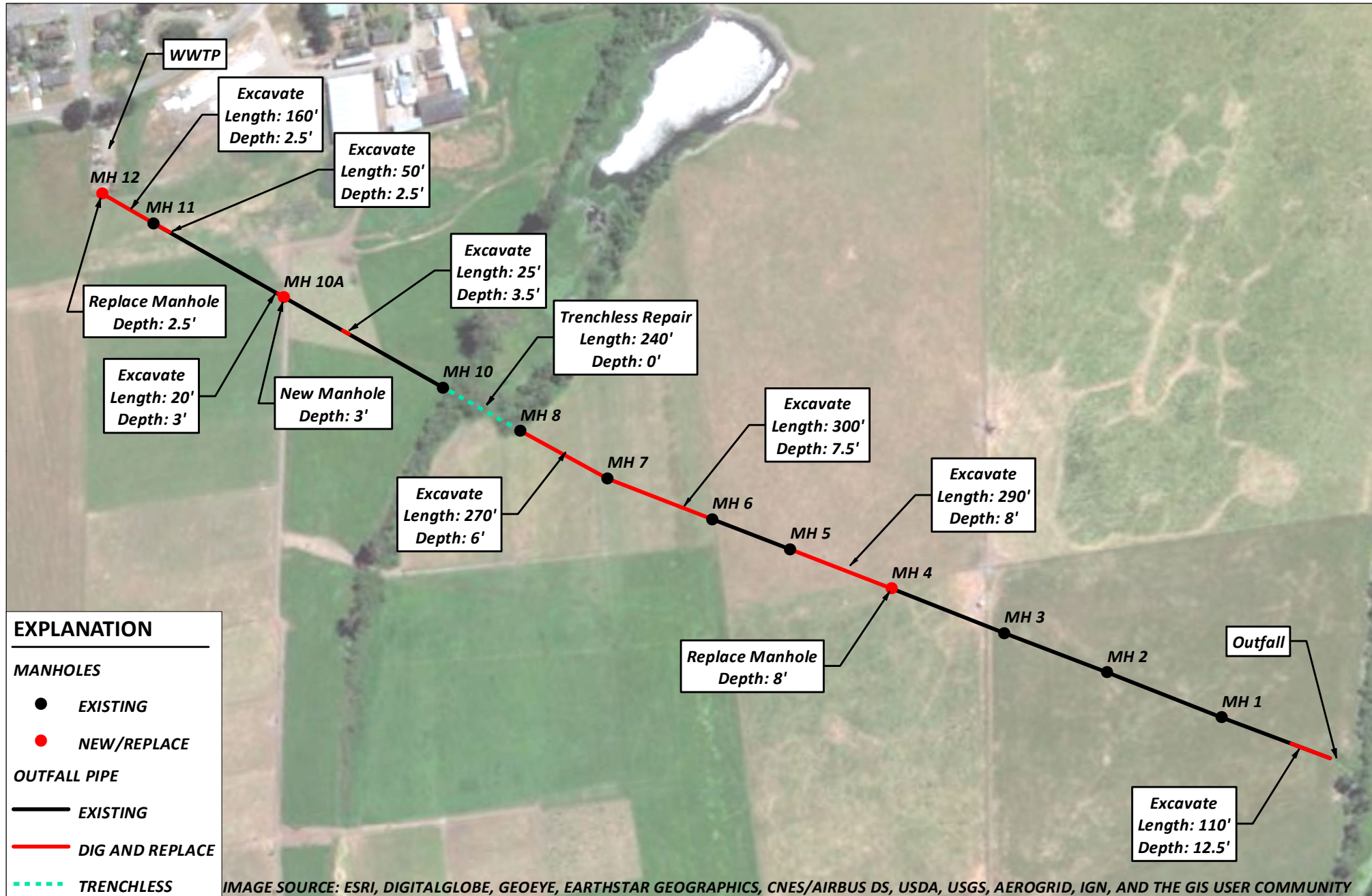
The proposed secondary treatment system is an extended aeration system. The extended aeration system provides a high-quality effluent that would be reliable in meeting current and future permit requirements for land application and discharge to Eel River, with effluent ammonia concentration less than 1 milligram per liter (mg/L), and total nitrogen concentrations of less than 10 mg/L.

Whereas the existing WWTF uses chlorine gas for disinfection, due to safety concerns, the production of chlorine byproducts, and operator input, this project proposes to install an ultraviolet (UV) disinfection system (Figure 3).

Currently, LCSD contracts to have biosolids hauled to another facility for dewatering and disposal. Because the relative low volume of biosolids and the projected reduction of biosolids do not justify an onsite biosolids handling facility, LCSD proposes to continue its current practice of contracting with a third party to dispose of biosolids.

Wastewater Discharge Pipe. Currently, treated effluent is discharged to the existing discharge location year-round, although this discharge is prohibited during the period of May 15 through September 30. LCSD proposes to continue to use the existing discharge location during the winter discharge period, from October 1 through May 14, when it is allowed. Continued use of this pipeline will require improvements to maintain its integrity over the next 20 years. The proposed improvements include replacing or repairing sections of the approximately 3,700 feet of discharge pipe, replacing two manholes, and installing one new manhole (Figure 4). Construction will use trenchless and open trench dig and replace methods. A total of approximately 1,225 linear feet of discharge pipe will be replaced using dig and replace methods, and approximately 240 feet of pipe will be repaired using trenchless methods. The proposed trenchless repair method is called fold-and-form, and does not use any chemical additives. Cured-in-place pipe (CIPP) will not be used on the outfall pipe. All construction impacts and staging will occur within approximately 25 feet of the wastewater discharge pipe centerline.

Land Application of Treated Effluent. To address effluent disposal during the summer discharge prohibition period, from May 15 through September 30, LCSD has leased agricultural land near the WWTF and will construct a land application system for treated effluent. This will allow LCSD to achieve compliance with the effluent disposal requirements during the summer discharge prohibition period. The site proposed for land application of treated effluent is on APN 309-191-012 (Figure 2), which is in use for cattle grazing.

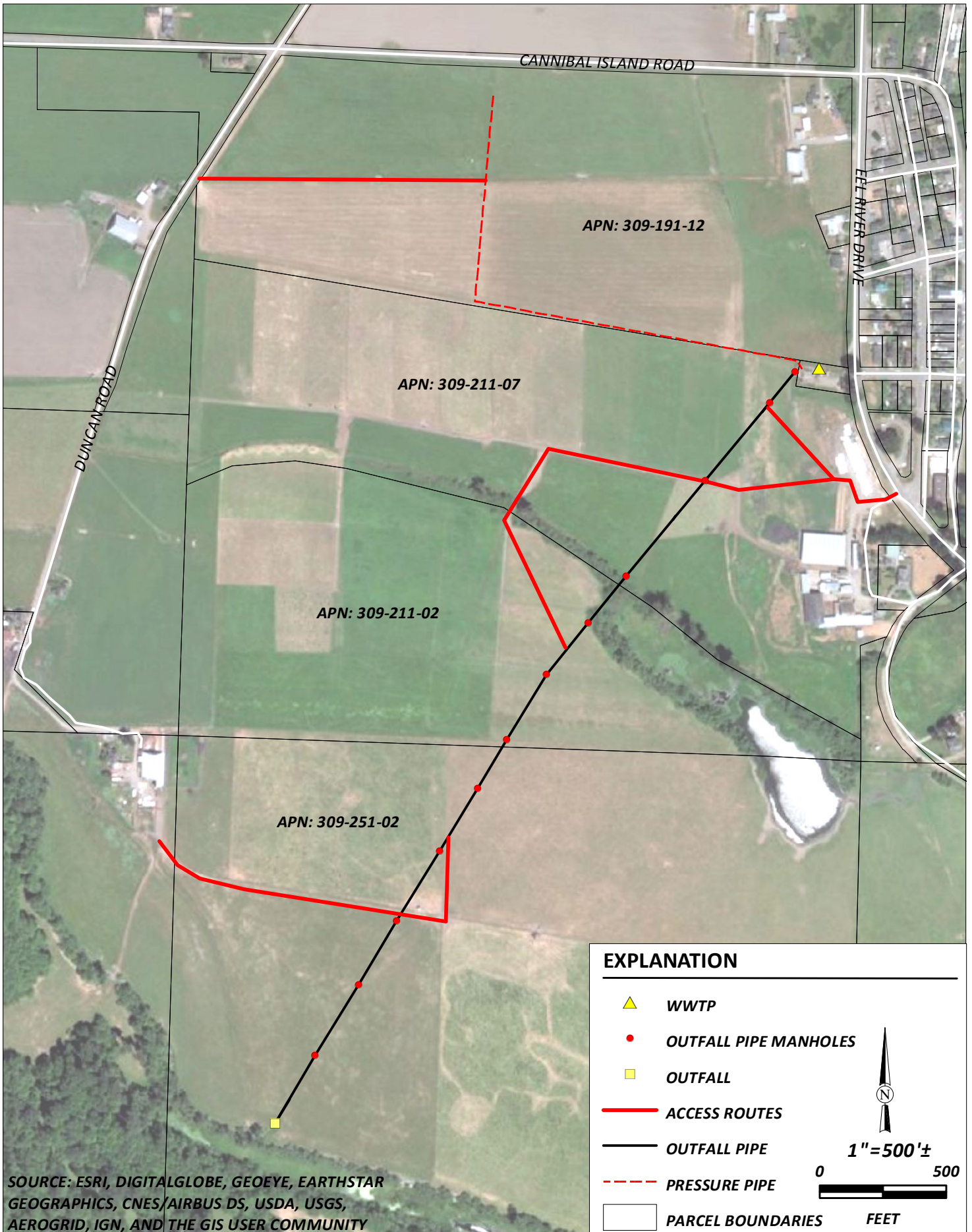


Loleta CSD
Project Description
Loleta, California

Outfall Pipe Repairs

SHN 015011.400

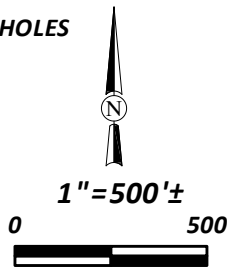
Path: \\Eureka\Projects\2015\015011-Loleta-CSD-WWTF\400-CEQA\GIS\PROJ_MXD\WWTF\Rev01\Fig5_AccessRoutes.mxd User Name: cswanson



SOURCE: ESRI, DIGITALGLOBE, GEOEYE, EARTHSTAR GEOGRAPHICS, CNES/AIRBUS DS, USDA, USGS, AEROGRID, IGN, AND THE GIS USER COMMUNITY

EXPLANATION

- WWTP
- OUTFALL PIPE MANHOLES
- OUTFALL
- ACCESS ROUTES
- OUTFALL PIPE
- PRESSURE PIPE
- PARCEL BOUNDARIES



Loleta CSD
Project Description
Loleta, California

April 2018

Access Routes

SHN 015011.400

Figure 5

To convey treated effluent for land application, a new pump station will be constructed at the new WWTF and a new subsurface 4-inch diameter force main pipe will be constructed between the new pump station and the land application site (2,150 linear feet) using open cut trenching (Figure 5). During the land application irrigation process, aboveground piping and irrigation equipment will be used and periodically rotated to irrigate various areas of the land application site. The irrigation system will include a 4-inch diameter underground header pipe that will connect to vertical risers where the sprinkler connects to the pipe. The sprinkler system is a mobile reel of flexible HDPE pipe with a sprinkler head on the end of the pipe. The sprinkler head is pulled out from the reel the length of the field by a small tractor and then the sprinkler is drawn back into the reel as it irrigates. Then the entire reel unit is moved to another header location and drawn back out for irrigation of a new part of the field.

Equipment, Access, and Staging

Wastewater Treatment Facility. Equipment to be used during construction at the WWTF will include pickup trucks, commercial delivery trucks, concrete trucks, backhoes, excavators, and cranes. Access to the WWTF is from Eel River Drive (Figure 5). Construction equipment and materials will be staged on upland portions of the WWTF site or on upland portions of adjacent areas that may be leased from adjacent landowners.

Wastewater Discharge Pipe. Construction equipment for replacing sections of the subsurface discharge pipe will include two or three double-axle flatbed trucks for delivering materials and equipment to the site, a backhoe or excavator for trenching, dump trucks for transport of excavated and backfill material, and small pickup trucks for transport of personnel. Approximately 1,225 feet of the discharge pipe will be rehabilitated using open trench dig and replace methods. Installation of one new manhole and replacement of two existing manholes will require working areas around each manhole not greater than an area 25 feet wide by 40 feet long. Trenchless repair of a 240-foot segment of pipe beneath a slough that lies between manholes 8 and 10 (Figure 1) will avoid impacts to riparian areas. Trenchless repairs of the outfall pipe will not use CIPP. Fold-and-form pipe repair inserts deformed PVC pipe into the host pipe, and expands the deformed new pipe once inserted, forming a new pipe inside the host pipe.

If the outfall pipe repairs are conducted following construction of the new land application system, no bypass pumping of effluent in the outfall pipe will be required. If repair of the outfall pipe occurs before the new land application site is constructed, flow in the outfall pipe will need to bypass the segments under repair. While work is being conducted on a section of the discharge pipe, the pipe will be plugged on the upstream end and effluent will be pumped out of the manhole to a manhole on the downstream end of the section on which work is being conducted. The portable pump will be located next to the upstream manhole and the hose will be laid parallel to the existing pipeline in the field and routed to the downstream manhole.

Trucks and equipment will need to drive across and park on the pasture lands in order to access the pipe and manholes for construction. Construction access for the work done on sections of pipe located on APNs 309-211-002 and 309-211-007 will be from Eel River Drive (Figure 5). Construction access for the work done on the sections of pipe on APN 309-251-002 will be from Duncan Road (Figure 5). Construction equipment and materials will be staged on upland portions of the WWTF site on Eel River Drive or on upland portions of adjacent areas that may be leased from adjacent landowners.

Land Application of Treated Effluent. Equipment to be used during construction of the land application system will include backhoes, excavators, commercial delivery trucks, and pickup trucks. Trucks and equipment will need to drive across and park on the pasture lands in order to construct the force main and associated infrastructure for land application. Construction access for work done on APN 309-191-012 will be from Duncan Road (Figure 5). Construction equipment and materials will be staged on upland portions of the WWTF site on Eel River Drive or on upland portions of adjacent areas that may be leased from adjacent landowners.

Timing of Construction

Wastewater Treatment Facility. LCS D plans to construct the WWTF improvements in 2019 and 2020. Construction of the WWTF improvements is proposed to take approximately 15 months.

Land Application of Treated Effluent. Construction of the land application system is proposed to occur in the summer/fall of 2019 when ground conditions are sufficiently dry, over approximately 80 work days between June and September, 2019.

Wastewater Discharge Pipe. Rehabilitation of the wastewater discharge pipe is proposed to occur over approximately 100 work days between May 15 and September 30, to coincide with the period when summer flow is eliminated through the system and rainfall is minimal.

Best Management Practices and Avoidance and Minimization Measures

The following construction best management practices (BMPs) and avoidance and minimization measures will be implemented during construction:

- If rainfall is forecasted during the time construction activities are being performed, all onsite stockpiles of soil, gravel, and construction debris shall be covered and secured before the onset of precipitation.
- After a rainstorm, all silt and debris shall be removed from the construction area and stormwater controls.
- No excavated soil or construction debris shall be temporarily placed or stored where it may be subject to entering the Eel River or other jurisdictional waters of the U.S. or state. All onsite stockpiles of soil and construction debris shall be contained at all times to minimize discharge of sediment and other pollutants.
- No debris, soil, silt, sand, trash, concrete or washings thereof, oil or other petroleum products or washings thereof, or other foreign materials shall be allowed to enter or be placed where it may be washed by rainfall or runoff into jurisdictional waters of the U.S. or state.
- During construction, all trash shall be removed from the work site and disposed of on a regular basis to avoid contamination of habitat. Any and all debris resulting from construction activities shall be removed from the project site and disposed of at an authorized disposal location within 10 days of project completion and/or prior to the onset of the rainy season, whichever is earlier.

- All spoils and construction debris will be hauled off site and disposed of at an appropriately permitted upland disposal facility (landfill or recycling plant).
- Fuels, lubricants, and solvents shall not be allowed to enter storm drain systems or jurisdictional waters of the U.S. or state. All equipment used during construction shall be free of oil and fuel leaks at all times.
- BMPs for concrete paving and grinding operations, and storm drain inlet protection shall be employed to prevent concrete grindings, concrete slurry, and paving rinseate from entering drop inlets or sheet-flowing into coastal waters.
- Hazardous materials management equipment, including oil containment booms and absorbent pads shall be available and immediately on hand at the project site. A registered first-response, professional, hazardous materials clean-up/remediation service shall be locally available on call. Any accidental spill shall be contained rapidly and cleaned up. In the event of a spill, LCSD shall notify the appropriate regulatory agencies immediately.
- Only wildlife-friendly 100% biodegradable erosion control products that will not entrap or harm wildlife shall be used. Erosion control products shall not contain synthetic (that is, plastic or nylon) netting. Photodegradable synthetic products are not considered biodegradable.
- During construction activities at the WWTF, all ground disturbing activity will be set back at least five feet from the edge of the wetland. The 5-foot buffer will be physically demarcated using construction fencing that will be placed and periodically maintained by a qualified biologist. Contractors will be educated on the purpose of the wetland setback and construction specifications and bid documents will prohibit any construction activity within five feet of the wetland.
- During trenching in agricultural areas (including all wetland areas), the top six inches of excavated material shall be separately stockpiled by the contractor. The contractor shall assure that this stockpiled soil material is kept moist and that the material is restored to the construction trench as soon as is feasible. This topsoil material shall be reintroduced as the top fill material in the restored trench section.
- To avoid potential impacts to nesting birds, one of the following shall be implemented:
 - a. Conduct vegetation removal and other ground disturbance activities associated with any construction activities between mid-August and mid-February, when birds are not typically nesting; or
 - b. If vegetation removal or ground-disturbing activity is to take place during the nesting season (February 15 to August 15 for most birds), a qualified biologist shall conduct a pre-construction nesting bird survey. Preconstruction surveys for nesting pairs, nests, and eggs shall occur within the construction limits and within 100 feet (200 feet for raptors) of the construction limits within 5 days of the commencement of construction. If active nests are encountered, species-specific measures shall be prepared by a qualified biologist in consultation with the USFWS and CDFW, and implemented to prevent abandonment of the active nest.

- If work is to occur within thick vegetation adjacent to wetlands then northern red-legged frog relocation surveys shall be conducted, immediately prior to disturbance. If tall grass has not been grazed it should be mowed within the vicinity of the construction work or an exclusion fence placed around the construction area following the relocation survey to reduce the likelihood that the northern red-legged frog will return to the construction area. The northern red-legged frog relocation surveys shall be conducted by a qualified biologist in consultation with CDFW.
- Fully implement all conditions of approval required by permit terms.

References

SHN Engineers & Geologists. (August 2016). *Wastewater Facilities Plan, LCSD Wastewater Treatment Facility; NPDES Permit No. CA0023671; Order No. R1-2014-0013*. Eureka, CA:SHN.



Technical Memorandum

Reference: 015011.400
Date: **May 4, 2018**
To: **Stein Coriell, Planner**
Copy to: **Mike Foget, PE**
From: **Chuck Swanson, EIT**
Subject: Loleta Community Services District Hydrologic Analysis for Wastewater Discharge Reduction

This memorandum presents data regarding the reduction in wastewater discharge flow from the Loleta Community Services District (LCSD) wastewater treatment facility (WWTF) with respect to in-stream flows in the Lower Eel River.

The LCSD WWTF currently discharges treated wastewater to the Lower Eel River throughout the year. The facility must cease discharging to the Eel River during the summer prohibition season (May 15 through September 30) to comply with the North Coast Basin Plan. The facility is also prohibited from contributing more than 1% of the in-stream flows in the Lower Eel River as measured at the Scotia gauging station (North Coast Regional Water Quality Control Board Order Number R1-2014-0013).

LCSD is proposing to rehabilitate the sanitary sewer collection system (SSCS), WWTF, and outfall discharge pipe, and to construct a new summertime land application area (LAA) to comply with the North Coast Regional Water Quality Control Board (RWQCB) Cease and Desist Order (CDO) R1-2015-0008. The SSCS rehabilitation project will reduce discharges to the Eel River through reduction of infiltration of groundwater into the sewer system. Use of the summertime LAA will eliminate summertime discharges as required by the North Coast Basin Plan and CDO R1-2015-0008.

Table 1 (on the following page) provides a summary comparison of LCSD WWTF discharge flow rates to in-stream Eel River flow rates. The reduction in flow discharged directly to the Eel River is minor in comparison to Eel River in-stream flows. The maximum percentage of in-stream flows represented by LCSD WWTF discharges was 0.71%, with a median value of 0.008% (n=1,366). The reduction in discharge flow rate resulting from the rehabilitation of the SSCS will be a minor percentage of the total LCSD WWTF discharge. The largest reduction in discharge flow rate will occur during the winter season when Eel River flows are high, and LCSD WWTF discharges make up the smallest portion of in-stream flows.

Treated wastewater that is currently discharged to surface water will be diverted to an LAA during the summer discharge prohibition period (May 15 through September 30). The LAA is located approximately 3,400 feet north of the current outfall location, and lies within the same groundwater basin such that discharges to the proposed LAA will remain within the same hydrologic system of the Lower Eel River basin.

**Table 1. Summary Comparison of LCSD WWTF¹ Discharge Flow Rate as Percentage of Eel River In-Stream Flow Rate
 Loleta Hydrologic Analysis**

Statistic	Percentage ^{2,3,4}
Median	0.008%
Average	0.028%
90 th Percentile	0.087%
99 th Percentile	0.15%
Maximum	0.71%
1. LCSD WWTF: Loleta Community Services District wastewater treatment facility 2. Data date range: 9/1/2011-5/31/2017 (number of data values: 1,366). 3. Eel River Flow Data Source: National Water Information System. May 1, 2018. <i>Stream Site: USGS 11477000 EEL R A SCOTIA CA</i> . Website address: https://waterdata.usgs.gov/nwis/inventory?agency_code=USGS&site_no=11477000 . Website accessed: May 1, 2018. 4. LCSD WWTF Effluent Flow Data Source: State Water Resources Control Board. May 1, 2018. <i>Electronic Self-Monitoring Report: Loleta WWTF</i> . Website address: http://ciwqs.waterboards.ca.gov/ciwqs/readOnly/CiwqsReportServlet?inCommand=reset&reportName=esmrAnalytical . Website accessed: May 1, 2018.	

References

- National Water Information System. (May 1, 2018). *Stream Site: USGS 11477000 EEL R A SCOTIA CA*. Accessed May 1, 2018, .at:
https://waterdata.usgs.gov/nwis/inventory?agency_code=USGS&site_no=11477000
- North Coast Regional Water Quality Control Board. (May 2011). *Water Quality Control Plan for the North Coast Region*. Santa Rosa, CA:RWQCB.
- . (May 8, 2014). *Waste Discharge Requirements for the Loleta Community Services District Wastewater Treatment Facility*. Santa Rosa, CA:RWQCB.
- State Water Resources Control Board. (May 1, 2018). *Electronic Self-Monitoring Report: Loleta WWTF*. Accessed: May 1, 2018, at:
<http://ciwqs.waterboards.ca.gov/ciwqs/readOnly/CiwqsReportServlet?inCommand=reset&reportName=esmrAnalytical>

Date	Eel R. Flow (MGD)	LCSD WWTF Flow (MGD)	Max: 0.429%	% of Streamflow
9/1/2011	97.6	0.046	0.047%	
9/2/2011	98.2	0.047	0.048%	
9/3/2011	95.0	0.047	0.049%	
9/4/2011	93.7	0.043	0.046%	
9/5/2011	92.4	0.053	0.057%	
9/6/2011	89.2	0.04	0.045%	
9/7/2011	87.2	0.044	0.050%	
9/8/2011	84.7	0.045	0.053%	
9/9/2011	84.0	0.042	0.050%	
9/10/2011	82.1	0.047	0.057%	
9/11/2011	81.4	0.044	0.054%	
9/12/2011	77.6	0.043	0.055%	
9/13/2011	75.0	0.042	0.056%	
9/14/2011	73.7	0.048	0.065%	
9/15/2011	73.7	0.043	0.058%	
9/16/2011	74.3	0.05	0.067%	
9/17/2011	75.6	0.051	0.067%	
9/18/2011	75.6	0.047	0.062%	
9/19/2011	76.3	0.047	0.062%	
9/20/2011	75.0	0.041	0.055%	
9/21/2011	73.7	0.043	0.058%	
9/22/2011	73.7	0.047	0.064%	
9/23/2011	74.3	0.051	0.069%	
9/24/2011	74.3	0.05	0.067%	
9/25/2011	75.6	0.054	0.071%	
9/26/2011	75.6	0.043	0.057%	
9/27/2011	74.3	0.047	0.063%	
9/28/2011	74.3	0.045	0.061%	
9/29/2011	77.6	0.066	0.085%	
9/30/2011	78.8	0.062	0.079%	
10/1/2011	74.3	0.047	0.063%	
10/2/2011	76.3	0.105	0.138%	
10/3/2011	96.9	0.09	0.093%	
10/4/2011	142.2	0.121	0.085%	
10/5/2011	355.4	0.123	0.035%	
10/6/2011	547.4	0.069	0.013%	
10/7/2011	615.3	0.057	0.009%	
10/8/2011	546.1	0.055	0.010%	
10/9/2011	438.8	0.242	0.055%	
10/10/2011	398.1	0.1	0.025%	
10/11/2011	603.6	0.072	0.012%	
10/12/2011	1260.2	0.041	0.003%	
10/13/2011	1034.0	0.053	0.005%	
10/14/2011	672.1	0.053	0.008%	
10/15/2011	498.3	0.053	0.011%	

10/16/2011	416.2	0.055	0.013%
10/17/2011	360.6	0.049	0.014%
10/18/2011	325.1	0.045	0.014%
10/19/2011	292.1	0.047	0.016%
10/20/2011	268.2	0.048	0.018%
10/21/2011	252.7	0.053	0.021%
10/22/2011	239.1	0.048	0.020%
10/23/2011	227.5	0.046	0.020%
10/24/2011	212.6	0.043	0.020%
10/25/2011	206.8	0.044	0.021%
10/26/2011	197.1	0.047	0.024%
10/27/2011	188.1	0.069	0.037%
10/28/2011	180.3	0.053	0.029%
10/29/2011	177.7	0.024	0.014%
10/30/2011	194.5	0.046	0.024%
10/31/2011	189.4	0.045	0.024%
11/1/2011	181.6	0.045	0.025%
11/2/2011	175.1	0.047	0.027%
11/3/2011	175.1	0.068	0.039%
11/4/2011	172.6	0.05	0.029%
11/5/2011	178.4	0.073	0.041%
11/6/2011	230.7	0.126	0.055%
11/7/2011	271.4	0.066	0.024%
11/8/2011	249.5	0.053	0.021%
11/9/2011	235.2	0.058	0.025%
11/10/2011	234.0	0.067	0.029%
11/11/2011	216.5	0.069	0.032%
11/12/2011	206.8	0.07	0.034%
11/13/2011	192.6	0.067	0.035%
11/14/2011	184.8	0.064	0.035%
11/15/2011	185.5	0.068	0.037%
11/16/2011	184.8	0.072	0.039%
11/17/2011	186.1	0.086	0.046%
11/18/2011	213.9	0.118	0.055%
11/19/2011	257.9	0.1	0.039%
11/20/2011	303.1	0.074	0.024%
11/21/2011	348.3	0.062	0.018%
11/22/2011	659.2	0.085	0.013%
11/23/2011	1447.6	0.202	0.014%
11/24/2011	2727.3	0.197	0.007%
11/25/2011	3961.6	0.129	0.003%
11/26/2011	2229.6	0.098	0.004%
11/27/2011	1434.7	0.075	0.005%
11/28/2011	1034.0	0.075	0.007%
11/29/2011	814.3	0.06	0.007%
11/30/2011	685.0	0.062	0.009%
12/1/2011	595.2	0.054	0.009%

12/2/2011	522.8	0.053	0.010%
12/3/2011	471.1	0.053	0.011%
12/4/2011	425.2	0.052	0.012%
12/5/2011	398.7	0.057	0.014%
12/6/2011	376.8	0.046	0.012%
12/7/2011	360.0	0.046	0.013%
12/8/2011	341.9	0.046	0.013%
12/9/2011	327.7	0.045	0.014%
12/10/2011	318.0	0.05	0.016%
12/11/2011	307.0	0.045	0.015%
12/12/2011	295.3	0.044	0.015%
12/13/2011	288.9	0.043	0.015%
12/14/2011	283.7	0.048	0.017%
12/15/2011	301.2	0.082	0.027%
12/16/2011	301.8	0.052	0.017%
12/17/2011	299.9	0.055	0.018%
12/18/2011	294.1	0.05	0.017%
12/19/2011	286.9	0.049	0.017%
12/20/2011	280.5	0.048	0.017%
12/21/2011	276.6	0.05	0.018%
12/22/2011	270.8	0.053	0.020%
12/23/2011	263.0	0.051	0.019%
12/24/2011	259.8	0.049	0.019%
12/25/2011	254.6	0.044	0.017%
12/26/2011	247.5	0.05	0.020%
12/27/2011	244.9	0.046	0.019%
12/28/2011	244.3	0.052	0.021%
12/29/2011	247.5	0.095	0.038%
12/30/2011	295.3	0.152	0.051%
12/31/2011	509.3	0.091	0.018%
1/1/2012	794.9	0.072	0.009%
1/2/2012	782.0	0.075	0.010%
1/3/2012	583.6	0.052	0.009%
1/4/2012	486.6	0.055	0.011%
1/5/2012	434.3	0.057	0.013%
1/6/2012	400.0	0.054	0.013%
1/7/2012	379.4	0.054	0.014%
1/8/2012	360.6	0.052	0.014%
1/9/2012	343.8	0.05	0.015%
1/10/2012	334.8	0.047	0.014%
1/11/2012	324.4	0.051	0.016%
1/12/2012	315.4	0.05	0.016%
1/13/2012	306.3	0.047	0.015%
1/14/2012	297.9	0.052	0.017%
1/15/2012	290.2	0.047	0.016%
1/16/2012	285.7	0.055	0.019%
1/17/2012	279.8	0.07	0.025%

1/18/2012	283.7	0.077	0.027%
1/19/2012	1447.6	0.313	0.022%
1/20/2012	12731.6	0.354	0.003%
1/21/2012	43106.3	0.338	0.001%
1/22/2012	20745.3	0.244	0.001%
1/23/2012	23007.3	0.253	0.001%
1/24/2012	15962.9	0.151	0.001%
1/25/2012	8918.6	0.265	0.003%
1/26/2012	7884.5	0.313	0.004%
1/27/2012	8595.4	0.184	0.002%
1/28/2012	6003.9	0.134	0.002%
1/29/2012	4355.9	0.108	0.002%
1/30/2012	3496.3	0.102	0.003%
1/31/2012	2940.5	0.095	0.003%
2/1/2012	2688.5	0.126	0.005%
2/2/2012	2565.7	0.088	0.003%
2/3/2012	2333.0	0.041	0.002%
2/4/2012	2061.6	0.068	0.003%
2/5/2012	1854.8	0.063	0.003%
2/6/2012	1673.8	0.066	0.004%
2/7/2012	1609.2	0.059	0.004%
2/8/2012	1919.4	0.059	0.003%
2/9/2012	2197.3	0.058	0.003%
2/10/2012	1887.1	0.091	0.005%
2/11/2012	1964.7	0.114	0.006%
2/12/2012	2223.2	0.093	0.004%
2/13/2012	3515.7	0.256	0.007%
2/14/2012	4368.8	0.132	0.003%
2/15/2012	3864.7	0.107	0.003%
2/16/2012	3108.6	0.093	0.003%
2/17/2012	2617.4	0.094	0.004%
2/18/2012	2313.7	0.086	0.004%
2/19/2012	2113.3	0.067	0.003%
2/20/2012	1958.2	0.07	0.004%
2/21/2012	1803.1	0.06	0.003%
2/22/2012	1673.8	0.058	0.003%
2/23/2012	1557.5	0.057	0.004%
2/24/2012	1467.0	0.057	0.004%
2/25/2012	1408.9	0.059	0.004%
2/26/2012	1324.9	0.059	0.004%
2/27/2012	1247.3	0.057	0.005%
2/28/2012	1215.0	0.084	0.007%
2/29/2012	2720.8	0.105	0.004%
3/1/2012	5383.4	0.151	0.003%
3/2/2012	7755.3	0.093	0.001%
3/3/2012	5228.3	0.083	0.002%
3/4/2012	4136.1	0.077	0.002%

3/5/2012	3767.8	0.081	0.002%
3/6/2012	3425.2	0.084	0.002%
3/7/2012	3018.1	0.071	0.002%
3/8/2012	2610.9	0.064	0.002%
3/9/2012	2294.3	0.069	0.003%
3/10/2012	2113.3	0.071	0.003%
3/11/2012	2093.9	0.099	0.005%
3/12/2012	2132.7	0.084	0.004%
3/13/2012	5273.6	0.241	0.005%
3/14/2012	14088.7	0.14	0.001%
3/15/2012	11374.4	0.163	0.001%
3/16/2012	21003.8	0.307	0.001%
3/17/2012	36449.7	0.235	0.001%
3/18/2012	21779.4	0.209	0.001%
3/19/2012	13636.3	0.134	0.001%
3/20/2012	9758.7	0.112	0.001%
3/21/2012	8272.3	0.125	0.002%
3/22/2012	10340.4	0.193	0.002%
3/23/2012	10405.0	0.123	0.001%
3/24/2012	8078.4	0.147	0.002%
3/25/2012	7561.4	0.115	0.002%
3/26/2012	7044.4	0.103	0.001%
3/27/2012	16221.4	0.281	0.002%
3/28/2012	54868.5	0.273	0.000%
3/29/2012	34317.0	0.281	0.001%
3/30/2012	47759.5	0.332	0.001%
3/31/2012	49116.7	0.316	0.001%
4/1/2012	49439.8	0.316	0.001%
4/2/2012	30504.0	0.3	0.001%
4/3/2012	20163.7	0.213	0.001%
4/4/2012	15381.3	0.2	0.001%
4/5/2012	12666.9	0.282	0.002%
4/6/2012	10469.6	0.214	0.002%
4/7/2012	8595.4	0.142	0.002%
4/8/2012	7367.5	0.1236	0.002%
4/9/2012	6372.2	0.09	0.001%
4/10/2012	5674.3	0.079	0.001%
4/11/2012	6365.8	0.073	0.001%
4/12/2012	9435.6	0.095	0.001%
4/13/2012	20163.7	0.25	0.001%
4/14/2012	19258.9	0.289	0.002%
4/15/2012	13507.1	0.174	0.001%
4/16/2012	10405.0	0.123	0.001%
4/17/2012	8853.9	0.103	0.001%
4/18/2012	7755.3	0.084	0.001%
4/19/2012	7044.4	0.139	0.002%
4/20/2012	6915.1	0.128	0.002%

4/21/2012	7109.0	0.094	0.001%
4/22/2012	6979.7	0.083	0.001%
4/23/2012	6850.5	0.072	0.001%
4/24/2012	6423.9	0.067	0.001%
4/25/2012	5719.5	0.06	0.001%
4/26/2012	5428.7	0.061	0.001%
4/27/2012	5622.6	0.12	0.002%
4/28/2012	4691.9	0.078	0.002%
4/29/2012	4103.8	0.066	0.002%
4/30/2012	3806.5	0.064	0.002%
5/1/2012	3612.7	0.056	0.002%
5/2/2012	3399.4	0.057	0.002%
5/3/2012	3108.6	0.066	0.002%
5/4/2012	3102.1	0.057	0.002%
5/5/2012	3166.7	0.055	0.002%
5/6/2012	2772.5	0.05	0.002%
5/7/2012	2526.9	0.055	0.002%
5/8/2012	2365.4	0.048	0.002%
5/9/2012	2249.0	0.048	0.002%
5/10/2012	2177.9	0.047	0.002%
5/11/2012	2087.5	0.049	0.002%
5/12/2012	1945.3	0.049	0.003%
5/13/2012	1828.9	0.049	0.003%
5/14/2012	1744.9	0.044	0.003%
5/15/2012	1693.2	0.042	0.002%
5/16/2012	1641.5	0.046	0.003%
5/17/2012	1564.0	0.041	0.003%
5/18/2012	1480.0	0.043	0.003%
5/19/2012	1389.5	0.044	0.003%
5/20/2012	1441.2	0.047	0.003%
5/21/2012	1505.8	0.043	0.003%
5/22/2012	1363.6	0.043	0.003%
5/23/2012	1253.8	0.04	0.003%
5/24/2012	1176.2	0.045	0.004%
5/25/2012	1118.1	0.043	0.004%
5/26/2012	1066.3	0.046	0.004%
5/27/2012	1014.6	0.044	0.004%
5/28/2012	956.5	0.046	0.005%
5/29/2012	917.7	0.051	0.006%
5/30/2012	878.9	0.046	0.005%
5/31/2012	840.2	0.053	0.006%
6/1/2012	801.4	0.047	0.006%
6/2/2012	769.1	0.049	0.006%
6/3/2012	743.2	0.046	0.006%
6/4/2012	736.8	0.074	0.010%
6/5/2012	788.5	0.079	0.010%
6/6/2012	782.0	0.056	0.007%

6/7/2012	807.8	0.053	0.007%
6/8/2012	756.1	0.052	0.007%
6/9/2012	685.0	0.052	0.008%
6/10/2012	639.8	0.051	0.008%
6/11/2012	609.4	0.05	0.008%
6/12/2012	601.7	0.044	0.007%
6/13/2012	562.3	0.049	0.009%
6/14/2012	536.4	0.048	0.009%
6/15/2012	509.3	0.044	0.009%
6/16/2012	489.9	0.045	0.009%
6/17/2012	469.2	0.042	0.009%
6/18/2012	446.6	0.035	0.008%
6/19/2012	424.0	0.023	0.005%
6/20/2012	405.9	0.045	0.011%
6/21/2012	387.8	0.045	0.012%
6/22/2012	381.9	0.077	0.020%
6/23/2012	405.9	0.071	0.017%
6/24/2012	402.0	0.048	0.012%
6/25/2012	383.9	0.05	0.013%
6/26/2012	385.2	0.043	0.011%
6/27/2012	378.1	0.049	0.013%
6/28/2012	363.2	0.051	0.014%
6/29/2012	349.0	0.049	0.014%
6/30/2012	339.9	0.052	0.015%
7/1/2012	325.1	0.52	0.160%
7/2/2012	312.8	0.044	0.014%
7/3/2012	297.9	0.048	0.016%
7/4/2012	286.9	0.044	0.015%
7/5/2012	277.9	0.043	0.015%
7/6/2012	266.9	0.047	0.018%
7/7/2012	257.9	0.048	0.019%
7/8/2012	247.5	0.049	0.020%
7/9/2012	234.0	0.044	0.019%
7/10/2012	219.7	0.048	0.022%
7/11/2012	210.7	0.045	0.021%
7/12/2012	198.4	0.047	0.024%
7/13/2012	188.7	0.051	0.027%
7/14/2012	181.0	0.051	0.028%
7/15/2012	172.6	0.049	0.028%
7/16/2012	166.1	0.042	0.025%
7/17/2012	174.5	0.049	0.028%
7/18/2012	191.3	0.085	0.044%
7/19/2012	193.2	0.058	0.030%
7/20/2012	177.7	0.053	0.030%
7/21/2012	164.8	0.05	0.030%
7/22/2012	159.0	0.048	0.030%
7/23/2012	155.1	0.043	0.028%

7/24/2012	147.4	0.049	0.033%
7/25/2012	140.9	0.043	0.031%
7/26/2012	133.8	0.048	0.036%
7/27/2012	127.3	0.044	0.035%
7/28/2012	121.5	0.043	0.035%
7/29/2012	118.9	0.046	0.039%
7/30/2012	115.7	0.041	0.035%
7/31/2012	110.5	0.045	0.041%
8/1/2012	106.0	0.042	0.040%
8/2/2012	101.5	0.044	0.043%
8/3/2012	95.6	0.042	0.044%
8/4/2012	92.4	0.043	0.047%
8/5/2012	89.8	0.044	0.049%
8/6/2012	86.0	0.043	0.050%
8/7/2012	81.4	0.044	0.054%
8/8/2012	79.5	0.042	0.053%
8/9/2012	79.5	0.043	0.054%
8/10/2012	77.6	0.044	0.057%
8/11/2012	73.7	0.045	0.061%
8/12/2012	73.0	0.043	0.059%
8/13/2012	69.8	0.042	0.060%
8/14/2012	66.6	0.04	0.060%
8/15/2012	65.3	0.052	0.080%
8/16/2012	63.1	0.049	0.078%
8/17/2012	60.5	0.046	0.076%
8/18/2012	59.1	0.049	0.083%
8/19/2012	56.0	0.043	0.077%
8/20/2012	54.2	0.043	0.079%
8/21/2012	52.7	0.042	0.080%
8/22/2012	50.7	0.044	0.087%
8/23/2012	51.8	0.046	0.089%
8/24/2012	51.3	0.053	0.103%
8/25/2012	51.4	0.045	0.088%
8/26/2012	50.0	0.041	0.082%
8/27/2012	50.9	0.041	0.081%
8/28/2012	51.8	0.04	0.077%
8/29/2012	50.6	0.041	0.081%
8/30/2012	58.8	0.043	0.073%
8/31/2012	60.7	0.045	0.074%
9/1/2012	57.3	0.037	0.065%
9/2/2012	53.8	0.05	0.093%
9/3/2012	51.8	0.045	0.087%
9/4/2012	50.9	0.043	0.084%
9/5/2012	49.6	0.05	0.101%
9/6/2012	48.0	0.045	0.094%
9/7/2012	47.0	0.042	0.089%
9/8/2012	46.7	0.024	0.051%

9/9/2012	44.9	0.043	0.096%
9/10/2012	44.9	0.044	0.098%
9/11/2012	44.1	0.044	0.100%
9/12/2012	43.9	0.044	0.100%
9/13/2012	43.9	0.043	0.098%
9/14/2012	43.1	0.041	0.095%
9/15/2012	43.3	0.041	0.095%
9/16/2012	42.7	0.044	0.103%
9/17/2012	40.8	0.042	0.103%
9/18/2012	41.0	0.05	0.122%
9/19/2012	40.1	0.044	0.110%
9/20/2012	39.5	0.044	0.111%
9/21/2012	39.0	0.044	0.113%
9/22/2012	39.5	0.044	0.111%
9/23/2012	39.4	0.064	0.163%
9/24/2012	39.0	0.039	0.100%
9/25/2012	38.7	0.04	0.103%
9/26/2012	40.3	0.046	0.114%
9/27/2012	42.2	0.042	0.100%
9/28/2012	42.5	0.045	0.106%
9/29/2012	41.9	0.042	0.100%
9/30/2012	41.1	0.042	0.102%
10/1/2012	40.6	0.043	0.106%
10/2/2012	39.2	0.037	0.094%
10/3/2012	38.8	0.041	0.106%
10/4/2012	37.5	0.043	0.115%
10/5/2012	36.9	0.041	0.111%
10/6/2012	37.5	0.044	0.117%
10/7/2012	36.1	0.041	0.113%
10/8/2012	35.5	0.041	0.115%
10/9/2012	36.3	0.037	0.102%
10/10/2012	35.7	0.042	0.118%
10/11/2012	36.0	0.043	0.119%
10/12/2012	39.7	0.037	0.093%
10/13/2012	44.9	0.043	0.096%
10/14/2012	47.4	0.042	0.089%
10/15/2012	46.7	0.043	0.092%
10/16/2012	49.9	0.069	0.138%
10/17/2012	51.8	0.049	0.095%
10/18/2012	51.6	0.043	0.083%
10/19/2012	52.6	0.045	0.086%
10/20/2012	52.9	0.048	0.091%
10/21/2012	51.3	0.054	0.105%
10/22/2012	74.3	0.155	0.209%
10/23/2012	87.9	0.076	0.086%
10/24/2012	109.9	0.054	0.049%
10/25/2012	158.3	0.047	0.030%

10/26/2012	194.5	0.046	0.024%
10/27/2012	206.8	0.047	0.023%
10/28/2012	181.6	0.048	0.026%
10/29/2012	160.3	0.047	0.029%
10/30/2012	135.7	0.043	0.032%
10/31/2012	135.1	0.078	0.058%
11/1/2012	171.9	0.06	0.035%
11/2/2012	230.1	0.056	0.024%
11/3/2012	237.8	0.059	0.025%
11/4/2012	229.4	0.057	0.025%
11/5/2012	239.8	0.06	0.025%
11/6/2012	202.3	0.05	0.025%
11/7/2012	174.5	0.045	0.026%
11/8/2012	165.4	0.108	0.065%
11/9/2012	166.1	0.105	0.063%
11/10/2012	171.9	0.103	0.060%
11/11/2012	177.7	0.06	0.034%
11/12/2012	159.6	0.057	0.036%
11/13/2012	157.7	0.054	0.034%
11/14/2012	165.4	0.051	0.031%
11/15/2012	177.1	0.05	0.028%
11/16/2012	181.0	0.05	0.028%
11/17/2012	226.8	0.122	0.054%
11/18/2012	424.6	0.097	0.023%
11/19/2012	2035.8	0.092	0.005%
11/20/2012	2475.2	0.201	0.008%
11/21/2012	8143.0	0.166	0.002%
11/22/2012	7432.1	0.094	0.001%
11/23/2012	3302.4	0.07	0.002%
11/24/2012	1938.8	0.063	0.003%
11/25/2012	1350.7	0.06	0.004%
11/26/2012	1034.0	0.043	0.004%
11/27/2012	859.5	0.048	0.006%
11/28/2012	1053.4	0.16	0.015%
11/29/2012	5105.5	0.44	0.009%
11/30/2012	41813.8	0.46	0.001%
12/1/2012	31408.8	0.459	0.001%
12/2/2012	78198.9	0.587	0.001%
12/3/2012	55773.3	0.315	0.001%
12/4/2012	22231.8	0.265	0.001%
12/5/2012	40133.5	0.29	0.001%
12/6/2012	29922.4	0.164	0.001%
12/7/2012	16221.4	0.12	0.001%
12/8/2012	10534.2	0.093	0.001%
12/9/2012	7626.0	0.074	0.001%
12/10/2012	5868.1	0.069	0.001%
12/11/2012	4827.7	0.088	0.002%

12/12/2012	4310.6	0.114	0.003%
12/13/2012	3909.9	0.082	0.002%
12/14/2012	3464.0	0.082	0.002%
12/15/2012	3147.3	0.078	0.002%
12/16/2012	3231.4	0.096	0.003%
12/17/2012	9306.3	0.142	0.002%
12/18/2012	15058.1	0.148	0.001%
12/19/2012	9112.4	0.111	0.001%
12/20/2012	8918.6	0.354	0.004%
12/21/2012	36966.8	0.51	0.001%
12/22/2012	53252.8	0.506	0.001%
12/23/2012	47371.7	0.399	0.001%
12/24/2012	47177.9	0.264	0.001%
12/25/2012	25980.1	0.242	0.001%
12/26/2012	29470.0	0.477	0.002%
12/27/2012	24752.2	0.308	0.001%
12/28/2012	16803.1	0.191	0.001%
12/29/2012	12666.9	0.13	0.001%
12/30/2012	9952.6	0.112	0.001%
12/31/2012	8207.7	0.098	0.001%
1/1/2013	6785.9	0.08	0.001%
1/2/2013	5881.1	0.073	0.001%
1/3/2013	5247.7	0.068	0.001%
1/4/2013	4769.5	0.064	0.001%
1/5/2013	4336.5	0.068	0.002%
1/6/2013	4110.3	0.056	0.001%
1/7/2013	4485.1	0.055	0.001%
1/8/2013	4110.3	0.049	0.001%
1/9/2013	4000.4	0.131	0.003%
1/10/2013	4194.3	0.155	0.004%
1/11/2013	4097.4	0.173	0.004%
1/12/2013	3761.3	0.108	0.003%
1/13/2013	3464.0	0.087	0.003%
1/14/2013	3205.5	0.07	0.002%
1/15/2013	2979.3	0.057	0.002%
1/16/2013	2791.9	0.059	0.002%
1/17/2013	2675.6	0.057	0.002%
1/18/2013	2617.4	0.058	0.002%
1/19/2013	2591.6	0.052	0.002%
1/20/2013	2533.4	0.054	0.002%
1/21/2013	2468.8	0.06	0.002%
1/22/2013	2378.3	0.049	0.002%
1/23/2013	2436.4	0.126	0.005%
1/24/2013	3625.6	0.113	0.003%
1/25/2013	5906.9	0.086	0.001%
1/26/2013	4737.2	0.08	0.002%
1/27/2013	4381.7	0.087	0.002%

1/28/2013	3845.3	0.136	0.004%
1/29/2013	3360.6	0.112	0.003%
1/30/2013	2985.8	0.087	0.003%
1/31/2013	2720.8	0.076	0.003%
2/1/2013	2533.4	0.069	0.003%
2/2/2013	2391.2	0.064	0.003%
2/3/2013	2268.4	0.063	0.003%
2/4/2013	2158.5	0.053	0.002%
2/5/2013	2074.5	0.05	0.002%
2/6/2013	1997.0	0.082	0.004%
2/7/2013	2035.8	0.135	0.007%
2/8/2013	2068.1	0.11	0.005%
2/9/2013	2061.6	0.082	0.004%
2/10/2013	1925.9	0.071	0.004%
2/11/2013	1790.2	0.062	0.003%
2/12/2013	1699.7	0.055	0.003%
2/13/2013	1615.7	0.054	0.003%
2/14/2013	1544.6	0.057	0.004%
2/15/2013	1499.4	0.052	0.003%
2/16/2013	1473.5	0.06	0.004%
2/17/2013	1447.6	0.055	0.004%
2/18/2013	1428.3	0.063	0.004%
2/19/2013	1467.0	0.112	0.008%
2/20/2013	1576.9	0.08	0.005%
2/21/2013	1596.3	0.08	0.005%
2/22/2013	1512.3	0.085	0.006%
2/23/2013	1460.6	0.093	0.006%
2/24/2013	1415.3	0.084	0.006%
2/25/2013	1376.6	0.073	0.005%
2/26/2013	1311.9	0.068	0.005%
2/27/2013	1260.2	0.075	0.006%
2/28/2013	1240.8	0.086	0.007%
3/1/2013	1215.0	0.073	0.006%
3/2/2013	1202.1	0.069	0.006%
3/3/2013	1240.8	0.068	0.005%
3/4/2013	1253.8	0.059	0.005%
3/5/2013	1363.6	0.154	0.011%
3/6/2013	4944.0	0.421	0.009%
3/7/2013	9758.7	0.204	0.002%
3/8/2013	6133.1	0.134	0.002%
3/9/2013	4446.4	0.108	0.002%
3/10/2013	3677.3	0.092	0.003%
3/11/2013	3186.1	0.08	0.003%
3/12/2013	2940.5	0.068	0.002%
3/13/2013	2830.7	0.066	0.002%
3/14/2013	2695.0	0.058	0.002%
3/15/2013	2552.8	0.054	0.002%

3/16/2013	2423.5	0.053	0.002%
3/17/2013	2294.3	0.054	0.002%
3/18/2013	2165.0	0.048	0.002%
3/19/2013	2035.8	0.054	0.003%
3/20/2013	2197.3	0.095	0.004%
3/21/2013	4491.6	0.061	0.001%
3/22/2013	4233.1	0.055	0.001%
3/23/2013	3192.6	0.06	0.002%
3/24/2013	2720.8	0.054	0.002%
3/25/2013	2455.8	0.052	0.002%
3/26/2013	2294.3	0.049	0.002%
3/27/2013	2158.5	0.048	0.002%
3/28/2013	2061.6	0.05	0.002%
3/29/2013	2009.9	0.05	0.002%
3/30/2013	1932.4	0.067	0.003%
3/31/2013	1932.4	0.065	0.003%
4/1/2013	2152.1	0.051	0.002%
4/2/2013	2404.1	0.047	0.002%
4/3/2013	2087.5	0.047	0.002%
4/4/2013	2294.3	0.101	0.004%
4/5/2013	4937.5	0.08	0.002%
4/6/2013	5706.6	0.09	0.002%
4/7/2013	4769.5	0.13	0.003%
4/8/2013	5124.9	0.117	0.002%
4/9/2013	5260.7	0.078	0.001%
4/10/2013	4355.9	0.071	0.002%
4/11/2013	3703.1	0.065	0.002%
4/12/2013	3302.4	0.059	0.002%
4/13/2013	2972.9	0.064	0.002%
4/14/2013	2688.5	0.06	0.002%
4/15/2013	2475.2	0.058	0.002%
4/16/2013	2307.2	0.059	0.003%
4/17/2013	2145.6	0.053	0.002%
4/18/2013	1977.6	0.055	0.003%
4/19/2013	1841.9	0.049	0.003%
4/20/2013	1732.0	0.055	0.003%
4/21/2013	1641.5	0.055	0.003%
4/22/2013	1557.5	0.05	0.003%
4/23/2013	1473.5	0.046	0.003%
4/24/2013	1389.5	0.049	0.004%
4/25/2013	1305.5	0.046	0.004%
4/26/2013	1234.4	0.048	0.004%
4/27/2013	1176.2	0.048	0.004%
4/28/2013	1118.1	0.049	0.004%
4/29/2013	1066.3	0.049	0.005%
4/30/2013	1027.6	0.04	0.004%
5/1/2013	988.8	0.04	0.004%

5/2/2013	950.0	0.04	0.004%
5/3/2013	891.9	0.04	0.004%
5/4/2013	840.2	0.084	0.010%
5/5/2013	801.4	0.049	0.006%
5/6/2013	782.0	0.047	0.006%
5/7/2013	801.4	0.043	0.005%
5/8/2013	807.8	0.047	0.006%
5/9/2013	807.8	0.055	0.007%
5/10/2013	762.6	0.047	0.006%
5/11/2013	730.3	0.048	0.007%
5/12/2013	717.4	0.048	0.007%
5/13/2013	665.7	0.046	0.007%
5/14/2013	630.8	0.041	0.007%
5/15/2013	599.7	0.045	0.008%
5/16/2013	586.2	0.045	0.008%
5/17/2013	572.0	0.045	0.008%
5/18/2013	558.4	0.046	0.008%
5/19/2013	542.9	0.047	0.009%
5/20/2013	524.8	0.043	0.008%
5/21/2013	509.3	0.042	0.008%
5/22/2013	492.5	0.046	0.009%
5/23/2013	468.5	0.046	0.010%
5/24/2013	451.1	0.043	0.010%
5/25/2013	444.0	0.044	0.010%
5/26/2013	436.9	0.096	0.022%
5/27/2013	443.3	0.101	0.023%
5/28/2013	471.8	0.053	0.011%
5/29/2013	475.7	0.057	0.012%
5/30/2013	477.6	0.051	0.011%
5/31/2013	455.0	0.043	0.009%
6/1/2013	414.9	0.049	0.012%
6/2/2013	391.0	0.057	0.015%
6/3/2013	368.4	0.047	0.013%
6/4/2013	345.8	0.045	0.013%
6/5/2013	337.4	0.046	0.014%
6/6/2013	316.0	0.049	0.016%
6/7/2013	293.4	0.047	0.016%
6/8/2013	274.7	0.051	0.019%
6/9/2013	261.1	0.05	0.019%
6/10/2013	244.9	0.043	0.018%
6/11/2013	230.1	0.044	0.019%
6/12/2013	223.6	0.049	0.022%
6/13/2013	215.2	0.049	0.023%
6/14/2013	209.4	0.051	0.024%
6/15/2013	204.2	0.053	0.026%
6/16/2013	200.3	0.047	0.023%
6/17/2013	193.9	0.046	0.024%

6/18/2013	182.2	0.042	0.023%
6/19/2013	177.1	0.049	0.028%
6/20/2013	171.3	0.049	0.029%
6/21/2013	165.4	0.047	0.028%
6/22/2013	160.3	0.045	0.028%
6/23/2013	164.8	0.049	0.030%
6/24/2013	175.1	0.057	0.033%
6/25/2013	180.3	0.044	0.024%
6/26/2013	228.8	0.048	0.021%
6/27/2013	318.0	0.049	0.015%
6/28/2013	480.2	0.044	0.009%
6/29/2013	504.7	0.046	0.009%
6/30/2013	389.7	0.044	0.011%
7/1/2013	317.3	0.042	0.013%
7/2/2013	266.9	0.044	0.016%
7/3/2013	237.2	0.046	0.019%
7/4/2013	212.6	0.04	0.019%
7/5/2013	193.9	0.044	0.023%
7/6/2013	179.0	0.044	0.025%
7/7/2013	165.4	0.047	0.028%
7/8/2013	179.7	0.038	0.021%
7/9/2013	171.3	0.041	0.024%
7/10/2013	154.5	0.041	0.027%
7/11/2013	142.2	0.042	0.030%
7/12/2013	128.6	0.041	0.032%
7/13/2013	119.6	0.047	0.039%
7/14/2013	115.7	0.046	0.040%
7/15/2013	109.9	0.044	0.040%
7/16/2013	104.0	0.049	0.047%
7/17/2013	98.9	0.048	0.049%
7/18/2013	94.4	0.047	0.050%
7/19/2013	91.8	0.045	0.049%
7/20/2013	88.5	0.048	0.054%
7/21/2013	87.2	0.045	0.052%
7/22/2013	84.7	0.048	0.057%
7/23/2013	82.7	0.046	0.056%
7/24/2013	80.8	0.049	0.061%
7/25/2013	78.2	0.048	0.061%
7/26/2013	74.3	0.051	0.069%
7/27/2013	72.4	0.05	0.069%
7/28/2013	67.2	0.043	0.064%
7/29/2013	64.1	0.046	0.072%
7/30/2013	61.6	0.045	0.073%
7/31/2013	57.7	0.049	0.085%
8/1/2013	56.4	0.046	0.082%
8/2/2013	56.5	0.047	0.083%
8/3/2013	55.9	0.048	0.086%

8/4/2013	55.2	0.047	0.085%
8/5/2013	52.9	0.043	0.081%
8/6/2013	50.8	0.039	0.077%
8/7/2013	48.9	0.048	0.098%
8/8/2013	47.0	0.045	0.096%
8/9/2013	46.9	0.044	0.094%
8/10/2013	45.6	0.044	0.097%
8/11/2013	45.6	0.045	0.099%
8/12/2013	45.8	0.045	0.098%
8/13/2013	44.7	0.045	0.101%
8/14/2013	44.0	0.049	0.111%
8/15/2013	43.9	0.048	0.109%
8/16/2013	44.7	0.049	0.110%
8/17/2013	42.4	0.05	0.118%
8/18/2013	43.1	0.044	0.102%
8/19/2013	44.4	0.048	0.108%
8/20/2013	43.1	0.041	0.095%
8/21/2013	41.9	0.046	0.110%
8/22/2013	40.5	0.046	0.114%
8/23/2013	39.6	0.047	0.119%
8/24/2013	38.5	0.049	0.127%
8/25/2013	39.8	0.05	0.126%
8/26/2013	39.9	0.045	0.113%
8/27/2013	39.0	0.042	0.108%
8/28/2013	38.1	0.046	0.121%
8/29/2013	37.6	0.049	0.130%
8/30/2013	37.4	0.053	0.142%
8/31/2013	36.3	0.05	0.138%
9/1/2013	35.2	0.043	0.122%
9/2/2013	36.1	0.051	0.141%
9/3/2013	35.7	0.046	0.129%
9/4/2013	34.8	0.049	0.141%
9/5/2013	34.7	0.053	0.153%
9/6/2013	33.6	0.049	0.146%
9/7/2013	35.2	0.051	0.145%
9/8/2013	34.8	0.049	0.141%
9/9/2013	34.8	0.047	0.135%
9/10/2013	34.3	0.043	0.126%
9/11/2013	34.2	0.048	0.140%
9/12/2013	34.4	0.045	0.131%
9/13/2013	33.3	0.048	0.144%
9/14/2013	34.4	0.051	0.148%
9/15/2013	34.1	0.052	0.152%
9/16/2013	32.0	0.044	0.138%
9/17/2013	35.8	0.046	0.128%
9/18/2013	34.1	0.046	0.135%
9/19/2013	33.4	0.044	0.132%

9/20/2013	37.4	0.064	0.171%
9/21/2013	53.3	0.062	0.116%
9/22/2013	80.1	0.05	0.062%
9/23/2013	105.3	0.047	0.045%
9/24/2013	96.9	0.048	0.050%
9/25/2013	95.0	0.064	0.067%
9/26/2013	83.4	0.049	0.059%
9/27/2013	76.3	0.046	0.060%
9/28/2013	75.0	0.05	0.067%
9/29/2013	90.5	0.086	0.095%
9/30/2013	159.6	0.107	0.067%
10/1/2013	401.3	0.044	0.011%
10/2/2013	406.5	0.045	0.011%
10/3/2013	316.7	0.0465	0.015%
10/4/2013	330.9	0.045	0.014%
10/5/2013	258.5	0.048	0.019%
10/6/2013	207.5	0.046	0.022%
10/7/2013	171.9	0.044	0.026%
10/8/2013	146.7	0.045	0.031%
10/9/2013	131.2	0.045	0.034%
10/10/2013	121.5	0.041	0.034%
10/11/2013	111.8	0.043	0.038%
10/12/2013	107.9	0.045	0.042%
10/13/2013	107.3	0.04	0.037%
10/14/2013	105.3	0.044	0.042%
10/15/2013	102.8	0.039	0.038%
10/16/2013	98.9	0.042	0.042%
10/17/2013	96.9	0.043	0.044%
10/18/2013	94.4	0.042	0.045%
10/19/2013	93.1	0.049	0.053%
10/20/2013	93.7	0.05	0.053%
10/21/2013	91.8	0.041	0.045%
10/22/2013	93.7	0.041	0.044%
10/23/2013	97.6	0.044	0.045%
10/24/2013	94.4	0.045	0.048%
10/25/2013	89.8	0.043	0.048%
10/26/2013	91.1	0.043	0.047%
10/27/2013	90.5	0.042	0.046%
10/28/2013	93.7	0.044	0.047%
10/29/2013	88.5	0.047	0.053%
10/30/2013	84.0	0.045	0.054%
10/31/2013	83.4	0.051	0.061%
11/1/2013	86.0	0.044	0.051%
11/2/2013	85.3	0.05	0.059%
11/3/2013	85.3	0.046	0.054%
11/4/2013	86.6	0.044	0.051%
11/5/2013	86.6	0.04	0.046%

11/6/2013	86.6	0.046	0.053%
11/7/2013	88.5	0.064	0.072%
11/8/2013	85.3	0.055	0.064%
11/9/2013	84.0	0.048	0.057%
11/10/2013	86.0	0.046	0.054%
11/11/2013	83.4	0.049	0.059%
11/12/2013	85.3	0.057	0.067%
11/13/2013	84.7	0.051	0.060%
11/14/2013	85.3	0.052	0.061%
11/15/2013	82.7	0.049	0.059%
11/16/2013	84.7	0.052	0.061%
11/17/2013	83.4	0.051	0.061%
11/18/2013	81.4	0.047	0.058%
11/19/2013	96.3	0.103	0.107%
11/20/2013	151.9	0.096	0.063%
11/21/2013	334.8	0.061	0.018%
11/22/2013	527.4	0.052	0.010%
11/23/2013	617.2	0.053	0.009%
11/24/2013	424.6	0.047	0.011%
11/25/2013	314.1	0.048	0.015%
11/26/2013	250.1	0.033	0.013%
11/27/2013	212.6	0.015	0.007%
11/28/2013	194.5	0.036	0.019%
11/29/2013	177.1	0.047	0.027%
11/30/2013	162.2	0.051	0.031%
12/1/2013	155.1	0.051	0.033%
12/2/2013	153.8	0.05	0.033%
12/3/2013	151.9	0.05	0.033%
12/4/2013	148.6	0.044	0.030%
12/5/2013	158.3	0.048	0.030%
12/6/2013	184.2	0.044	0.024%
12/7/2013	204.9	0.065	0.032%
12/8/2013	203.6	0.078	0.038%
12/9/2013	203.6	0.052	0.026%
12/10/2013	203.6	0.052	0.026%
12/11/2013	199.7	0.044	0.022%
12/12/2013	190.7	0.048	0.025%
12/13/2013	188.7	0.046	0.024%
12/14/2013	191.9	0.048	0.025%
12/15/2013	188.1	0.061	0.032%
12/16/2013	182.9	0.051	0.028%
12/17/2013	160.9	0.046	0.029%
12/18/2013	144.1	0.043	0.030%
12/19/2013	135.7	0.049	0.036%
12/20/2013	131.8	0.047	0.036%
12/21/2013	131.2	0.049	0.037%
12/22/2013	129.3	0.055	0.043%

12/23/2013	128.0	0.051	0.040%
12/24/2013	126.7	0.051	0.040%
12/25/2013	126.7	0.054	0.043%
12/26/2013	124.1	0.042	0.034%
12/27/2013	121.5	0.048	0.040%
12/28/2013	120.2	0.053	0.044%
12/29/2013	120.9	0.053	0.044%
12/30/2013	118.9	0.051	0.043%
12/31/2013	115.7	0.049	0.042%
1/1/2014	114.4	0.051	0.045%
1/2/2014	114.4	0.054	0.047%
1/3/2014	113.7	0.054	0.047%
1/4/2014	113.1	0.054	0.048%
1/5/2014	113.7	0.055	0.048%
1/6/2014	112.5	0.048	0.043%
1/7/2014	110.5	0.053	0.048%
1/8/2014	110.5	0.063	0.057%
1/9/2014	112.5	0.068	0.060%
1/10/2014	113.1	0.048	0.042%
1/11/2014	119.6	0.077	0.064%
1/12/2014	134.4	0.061	0.045%
1/13/2014	142.2	0.056	0.039%
1/14/2014	148.6	0.048	0.032%
1/15/2014	156.4	0.052	0.033%
1/16/2014	162.2	0.053	0.033%
1/17/2014	154.5	0.056	0.036%
1/18/2014	145.4	0.059	0.041%
1/19/2014	137.7	0.058	0.042%
1/20/2014	128.6	0.06	0.047%
1/21/2014	121.5	0.053	0.044%
1/22/2014	115.7	0.055	0.048%
1/23/2014	113.7	0.054	0.047%
1/24/2014	110.5	0.06	0.054%
1/25/2014	108.6	0.062	0.057%
1/26/2014	106.6	0.058	0.054%
1/27/2014	104.7	0.057	0.054%
1/28/2014	102.8	0.061	0.059%
1/29/2014	108.6	0.1	0.092%
1/30/2014	157.7	0.061	0.039%
1/31/2014	195.2	0.06	0.031%
2/1/2014	322.5	0.57	0.177%
2/2/2014	367.7	0.047	0.013%
2/3/2014	288.2	0.048	0.017%
2/4/2014	235.2	0.044	0.019%
2/5/2014	207.5	0.046	0.022%
2/6/2014	192.6	0.061	0.032%
2/7/2014	201.0	0.089	0.044%

2/8/2014	579.1	0.104	0.018%
2/9/2014	10146.5	0.215	0.002%
2/10/2014	15704.4	0.128	0.001%
2/11/2014	8789.3	0.078	0.001%
2/12/2014	3780.7	0.088	0.002%
2/13/2014	2669.1	0.157	0.006%
2/14/2014	3134.4	0.265	0.008%
2/15/2014	3825.9	0.231	0.006%
2/16/2014	6423.9	0.152	0.002%
2/17/2014	6721.2	0.106	0.002%
2/18/2014	3774.2	0.101	0.003%
2/19/2014	2746.7	0.163	0.006%
2/20/2014	2358.9	0.094	0.004%
2/21/2014	1984.1	0.076	0.004%
2/22/2014	1628.6	0.066	0.004%
2/23/2014	1376.6	0.06	0.004%
2/24/2014	1182.7	0.053	0.004%
2/25/2014	1034.0	0.051	0.005%
2/26/2014	930.6	0.061	0.007%
2/27/2014	1460.6	0.144	0.010%
2/28/2014	7238.2	0.1	0.001%
3/1/2014	5861.7	0.1	0.002%
3/2/2014	4627.3	0.079	0.002%
3/3/2014	6165.4	0.066	0.001%
3/4/2014	33283.0	0.113	0.000%
3/5/2014	17772.5	0.099	0.001%
3/6/2014	20486.8	0.101	0.000%
3/7/2014	15962.9	0.095	0.001%
3/8/2014	9306.3	0.07	0.001%
3/9/2014	6721.2	0.065	0.001%
3/10/2014	13701.0	0.371	0.003%
3/11/2014	15575.2	0.417	0.003%
3/12/2014	8724.7	0.2	0.002%
3/13/2014	5952.2	0.135	0.002%
3/14/2014	4491.6	0.102	0.002%
3/15/2014	3599.7	0.084	0.002%
3/16/2014	2972.9	0.076	0.003%
3/17/2014	2559.2	0.073	0.003%
3/18/2014	2268.4	0.086	0.004%
3/19/2014	2035.8	0.06	0.003%
3/20/2014	1835.4	0.056	0.003%
3/21/2014	1686.8	0.055	0.003%
3/22/2014	1551.1	0.054	0.003%
3/23/2014	1434.7	0.053	0.004%
3/24/2014	1318.4	0.055	0.004%
3/25/2014	1260.2	0.052	0.004%
3/26/2014	1693.2	0.079	0.005%

3/27/2014	3741.9	0.096	0.003%
3/28/2014	4989.2	0.074	0.001%
3/29/2014	32959.9	0.113	0.000%
3/30/2014	30180.9	0.123	0.000%
3/31/2014	14735.0	0.087	0.001%
4/1/2014	15639.8	0.128	0.001%
4/2/2014	13959.5	0.095	0.001%
4/3/2014	10792.7	0.082	0.001%
4/4/2014	8401.5	0.073	0.001%
4/5/2014	6721.2	0.065	0.001%
4/6/2014	5603.2	0.061	0.001%
4/7/2014	4737.2	0.053	0.001%
4/8/2014	4168.5	0.049	0.001%
4/9/2014	3722.5	0.053	0.001%
4/10/2014	3360.6	0.052	0.002%
4/11/2014	3031.0	0.054	0.002%
4/12/2014	2740.2	0.054	0.002%
4/13/2014	2514.0	0.052	0.002%
4/14/2014	2300.7	0.049	0.002%
4/15/2014	2106.8	0.047	0.002%
4/16/2014	1958.2	0.049	0.003%
4/17/2014	1835.4	0.056	0.003%
4/18/2014	1732.0	0.064	0.004%
4/19/2014	1628.6	0.064	0.004%
4/20/2014	1525.2	0.067	0.004%
4/21/2014	1434.7	0.085	0.006%
4/22/2014	1389.5	0.087	0.006%
4/23/2014	1337.8	0.095	0.007%
4/24/2014	1305.5	0.138	0.011%
4/25/2014	1286.1	0.089	0.007%
4/26/2014	1305.5	0.081	0.006%
4/27/2014	1299.0	0.077	0.006%
4/28/2014	1221.5	0.055	0.005%
4/29/2014	1143.9	0.05	0.004%
4/30/2014	1066.3	0.05	0.005%
5/1/2014	995.3	0.05	0.005%
5/2/2014	937.1	0.054	0.006%
5/3/2014	885.4	0.051	0.006%
5/4/2014	840.2	0.051	0.006%
5/5/2014	833.7	0.059	0.007%
5/6/2014	807.8	0.085	0.011%
5/7/2014	782.0	0.054	0.007%
5/8/2014	762.6	0.053	0.007%
5/9/2014	736.8	0.054	0.007%
5/10/2014	743.2	0.055	0.007%
5/11/2014	736.8	0.065	0.009%
5/12/2014	691.5	0.055	0.008%

5/13/2014	652.7	0.05	0.008%
5/14/2014	615.9	0.048	0.008%
5/15/2014	577.1	0.052	0.009%
5/16/2014	539.0	0.063	0.012%
5/17/2014	509.9	0.052	0.010%
5/18/2014	487.3	0.056	0.011%
5/19/2014	469.2	0.049	0.010%
5/20/2014	451.7	0.045	0.010%
5/21/2014	438.8	0.045	0.010%
5/22/2014	422.0	0.068	0.016%
5/23/2014	411.0	0.051	0.012%
5/24/2014	392.3	0.046	0.012%
5/25/2014	360.6	0.048	0.013%
5/26/2014	334.8	0.04	0.012%
5/27/2014	317.3	0.052	0.016%
5/28/2014	303.7	0.045	0.015%
5/29/2014	288.9	0.048	0.017%
5/30/2014	283.7	0.045	0.016%
5/31/2014	278.5	0.043	0.015%
6/1/2014	267.6	0.045	0.017%
6/2/2014	257.2	0.046	0.018%
6/3/2014	246.9	0.044	0.018%
6/4/2014	240.4	0.042	0.017%
6/5/2014	232.0	0.048	0.021%
6/6/2014	220.4	0.048	0.022%
6/7/2014	210.0	0.045	0.021%
6/8/2014	199.1	0.05	0.025%
6/9/2014	189.4	0.049	0.026%
6/10/2014	178.4	0.055	0.031%
6/11/2014	170.6	0.042	0.025%
6/12/2014	160.3	0.046	0.029%
6/13/2014	153.2	0.043	0.028%
6/14/2014	144.8	0.046	0.032%
6/15/2014	139.6	0.048	0.034%
6/16/2014	133.8	0.048	0.036%
6/17/2014	126.7	0.049	0.039%
6/18/2014	125.4	0.041	0.033%
6/19/2014	122.8	0.045	0.037%
6/20/2014	118.9	0.045	0.038%
6/21/2014	115.7	0.045	0.039%
6/22/2014	111.2	0.047	0.042%
6/23/2014	106.0	0.035	0.033%
6/24/2014	100.8	0.036	0.036%
6/25/2014	99.5	0.048	0.048%
6/26/2014	99.5	0.048	0.048%
6/27/2014	98.9	0.047	0.048%
6/28/2014	96.9	0.05	0.052%

6/29/2014	95.0	0.042	0.044%
6/30/2014	93.7	0.046	0.049%
7/1/2014	88.5	0.042	0.047%
7/2/2014	82.1	0.042	0.051%
7/3/2014	81.4	0.039	0.048%
7/4/2014	79.5	0.043	0.054%
7/5/2014	75.6	0.04	0.053%
7/6/2014	73.0	0.045	0.062%
7/7/2014	71.1	0.043	0.060%
7/8/2014	66.6	0.04	0.060%
7/9/2014	62.5	0.04	0.064%
7/10/2014	59.5	0.044	0.074%
7/11/2014	57.3	0.044	0.077%
7/12/2014	53.8	0.048	0.089%
7/13/2014	50.7	0.048	0.095%
7/14/2014	49.1	0.046	0.094%
7/15/2014	49.3	0.051	0.103%
7/16/2014	48.3	0.043	0.089%
7/17/2014	46.0	0.045	0.098%
7/18/2014	45.0	0.048	0.107%
7/19/2014	43.5	0.047	0.108%
7/20/2014	42.6	0.05	0.117%
7/21/2014	41.2	0.048	0.116%
7/22/2014	40.1	0.044	0.110%
7/23/2014	39.4	0.041	0.104%
7/24/2014	36.8	0.054	0.147%
7/25/2014	37.5	0.049	0.131%
7/26/2014	36.1	0.05	0.139%
7/27/2014	35.4	0.049	0.138%
7/28/2014	35.8	0.049	0.137%
7/29/2014	34.2	0.043	0.126%
7/30/2014	32.2	0.042	0.130%
7/31/2014	30.5	0.042	0.138%
8/1/2014	28.9	0.042	0.145%
8/2/2014	28.0	0.051	0.182%
8/3/2014	26.6	0.053	0.200%
8/4/2014	26.0	0.049	0.188%
8/5/2014	25.6	0.048	0.188%
8/6/2014	24.2	0.04	0.165%
8/7/2014	23.3	0.04	0.171%
8/8/2014	22.0	0.044	0.200%
8/9/2014	21.3	0.042	0.198%
8/10/2014	21.7	0.042	0.193%
8/11/2014	21.5	0.044	0.204%
8/12/2014	21.7	0.038	0.176%
8/13/2014	20.9	0.038	0.182%
8/14/2014	19.2	0.043	0.224%

8/15/2014	18.5	0.043	0.233%
8/16/2014	18.3	0.044	0.241%
8/17/2014	18.0	0.043	0.239%
8/18/2014	18.9	0.05	0.265%
8/19/2014	17.8	0.045	0.252%
8/20/2014	18.7	0.039	0.208%
8/21/2014	18.1	0.043	0.238%
8/22/2014	17.6	0.044	0.249%
8/23/2014	18.2	0.045	0.248%
8/24/2014	18.4	0.046	0.251%
8/25/2014	17.3	0.039	0.226%
8/26/2014	17.2	0.046	0.268%
8/27/2014	17.4	0.038	0.218%
8/28/2014	17.4	0.036	0.207%
8/29/2014	17.1	0.042	0.246%
8/30/2014	18.2	0.047	0.258%
8/31/2014	22.7	0.048	0.211%
9/1/2014	24.6	0.049	0.200%
9/2/2014	24.9	0.04	0.161%
9/3/2014	24.5	0.042	0.171%
9/4/2014	23.2	0.042	0.181%
9/5/2014	23.3	0.043	0.184%
9/6/2014	23.0	0.043	0.187%
9/7/2014	22.8	0.045	0.197%
9/8/2014	23.0	0.043	0.187%
9/9/2014	22.6	0.039	0.173%
9/10/2014	21.8	0.037	0.170%
9/11/2014	22.6	0.041	0.182%
9/12/2014	22.9	0.036	0.157%
9/13/2014	23.1	0.051	0.221%
9/14/2014	23.2	0.042	0.181%
9/15/2014	23.5	0.04	0.170%
9/16/2014	23.1	0.044	0.191%
9/17/2014	24.4	0.036	0.147%
9/18/2014	30.8	0.043	0.139%
9/19/2014	30.1	0.041	0.136%
9/20/2014	31.5	0.042	0.133%
9/21/2014	32.2	0.042	0.130%
9/22/2014	32.3	0.044	0.136%
9/23/2014	32.7	0.037	0.113%
9/24/2014	55.5	0.238	0.429%
9/25/2014	120.9	0.085	0.070%
9/26/2014	117.6	0.06	0.051%
9/27/2014	111.8	0.045	0.040%
9/28/2014	108.6	0.045	0.041%
9/29/2014	98.9	0.044	0.044%
9/30/2014	86.0	0.041	0.048%

10/1/2014	81.4	0.041	0.050%
10/2/2014	79.5	0.041	0.052%
10/3/2014	73.7	0.04	0.054%
10/4/2014	71.7	0.043	0.060%
10/5/2014	67.2	0.042	0.062%
10/6/2014	63.9	0.044	0.069%
10/7/2014	60.3	0.043	0.071%
10/8/2014	57.9	0.032	0.055%
10/9/2014	55.6	0.04	0.072%
10/10/2014	54.9	0.036	0.066%
10/11/2014	55.1	0.042	0.076%
10/12/2014	54.5	0.04	0.073%
10/13/2014	53.8	0.045	0.084%
10/14/2014	56.2	0.047	0.084%
10/15/2014	73.0	0.053	0.073%
10/16/2014	87.2	0.053	0.061%
10/17/2014	84.7	0.042	0.050%
10/18/2014	93.7	0.045	0.048%
10/19/2014	104.0	0.051	0.049%
10/20/2014	118.3	0.045	0.038%
10/21/2014	131.2	0.099	0.075%
10/22/2014	143.5	0.047	0.033%
10/23/2014	266.9	0.07	0.026%
10/24/2014	859.5	0.259	0.030%
10/25/2014	975.9	0.175	0.018%
10/26/2014	2022.8	0.168	0.008%
10/27/2014	1725.5	0.134	0.008%
10/28/2014	1169.8	0.082	0.007%
10/29/2014	736.8	0.066	0.009%
10/30/2014	504.1	0.059	0.012%
10/31/2014	466.0	0.053	0.011%
11/1/2014	599.7	0.074	0.012%
11/2/2014	611.4	0.059	0.010%
11/3/2014	506.0	0.045	0.009%
11/4/2014	431.1	0.041	0.010%
11/5/2014	360.0	0.049	0.014%
11/6/2014	303.1	0.06	0.020%
11/7/2014	272.7	0.066	0.024%
11/8/2014	243.0	0.049	0.020%
11/9/2014	225.5	0.048	0.021%
11/10/2014	211.3	0.052	0.025%
11/11/2014	199.1	0.045	0.023%
11/12/2014	191.9	0.045	0.023%
11/13/2014	191.9	0.065	0.034%
11/14/2014	221.0	0.065	0.029%
11/15/2014	237.8	0.063	0.026%
11/16/2014	238.5	0.053	0.022%

11/17/2014	243.6	0.052	0.021%
11/18/2014	235.9	0.04	0.017%
11/19/2014	236.5	0.07	0.030%
11/20/2014	407.2	0.113	0.028%
11/21/2014	652.7	0.124	0.019%
11/22/2014	5105.5	0.382	0.007%
11/23/2014	10857.4	0.145	0.001%
11/24/2014	3968.1	0.095	0.002%
11/25/2014	2100.4	0.073	0.003%
11/26/2014	1408.9	0.071	0.005%
11/27/2014	1059.9	0.057	0.005%
11/28/2014	904.8	0.079	0.009%
11/29/2014	1641.5	0.354	0.022%
11/30/2014	6721.2	0.174	0.003%
12/1/2014	5945.7	0.107	0.002%
12/2/2014	3774.2	0.086	0.002%
12/3/2014	3451.1	0.102	0.003%
12/4/2014	16027.5	0.073	0.000%
12/5/2014	9629.5	0.193	0.002%
12/6/2014	14928.9	0.269	0.002%
12/7/2014	13765.6	0.186	0.001%
12/8/2014	11439.0	0.16	0.001%
12/9/2014	13183.9	0.106	0.001%
12/10/2014	9500.2	0.261	0.003%
12/11/2014	38840.9	0.433	0.001%
12/12/2014	53705.2	0.299	0.001%
12/13/2014	25398.5	0.186	0.001%
12/14/2014	14476.5	0.133	0.001%
12/15/2014	10081.8	0.126	0.001%
12/16/2014	9370.9	0.192	0.002%
12/17/2014	15510.5	0.432	0.003%
12/18/2014	20422.2	0.195	0.001%
12/19/2014	20939.2	0.426	0.002%
12/20/2014	25980.1	0.512	0.002%
12/21/2014	27466.6	0.699	0.003%
12/22/2014	24170.6	0.469	0.002%
12/23/2014	16867.7	0.263	0.002%
12/24/2014	12473.0	0.254	0.002%
12/25/2014	11051.3	0.23	0.002%
12/26/2014	8853.9	0.135	0.002%
12/27/2014	7044.4	0.114	0.002%
12/28/2014	5764.7	0.093	0.002%
12/29/2014	4911.7	0.08	0.002%
12/30/2014	4239.5	0.074	0.002%
12/31/2014	3690.2	0.066	0.002%
1/1/2015	3270.1	0.06	0.002%
1/2/2015	2972.9	0.055	0.002%

1/3/2015	2707.9	0.059	0.002%
1/4/2015	2481.7	0.057	0.002%
1/5/2015	2294.3	0.05	0.002%
1/6/2015	2132.7	0.059	0.003%
1/7/2015	1984.1	0.051	0.003%
1/8/2015	1848.3	0.062	0.003%
1/9/2015	1738.5	0.05	0.003%
1/10/2015	1635.1	0.053	0.003%
1/11/2015	1544.6	0.052	0.003%
1/12/2015	1460.6	0.047	0.003%
1/13/2015	1389.5	0.048	0.003%
1/14/2015	1311.9	0.045	0.003%
1/15/2015	1240.8	0.049	0.004%
1/16/2015	1376.6	0.094	0.007%
1/17/2015	1854.8	0.084	0.005%
1/18/2015	3360.6	0.174	0.005%
1/19/2015	5965.1	0.095	0.002%
1/20/2015	4627.3	0.073	0.002%
1/21/2015	3405.9	0.061	0.002%
1/22/2015	2817.7	0.053	0.002%
1/23/2015	2442.9	0.048	0.002%
1/24/2015	2171.5	0.063	0.003%
1/25/2015	1984.1	0.055	0.003%
1/26/2015	1835.4	0.045	0.002%
1/27/2015	1699.7	0.046	0.003%
1/28/2015	1576.9	0.046	0.003%
1/29/2015	1473.5	0.05	0.003%
1/30/2015	1389.5	0.041	0.003%
1/31/2015	1318.4	0.045	0.003%
2/1/2015	1253.8	0.046	0.004%
2/2/2015	1292.5	0.139	0.011%
2/3/2015	1467.0	0.101	0.007%
2/4/2015	1337.8	0.078	0.006%
2/5/2015	1887.1	0.296	0.016%
2/6/2015	26367.9	0.701	0.003%
2/7/2015	80137.7	0.515	0.001%
2/8/2015	36062.0	0.297	0.001%
2/9/2015	35738.8	0.304	0.001%
2/10/2015	35674.2	0.188	0.001%
2/11/2015	20939.2	0.121	0.001%
2/12/2015	13830.2	0.099	0.001%
2/13/2015	10081.8	0.078	0.001%
2/14/2015	7949.1	0.071	0.001%
2/15/2015	6417.5	0.061	0.001%
2/16/2015	5344.7	0.057	0.001%
2/17/2015	4601.5	0.052	0.001%
2/18/2015	4039.2	0.046	0.001%

2/19/2015	3606.2	0.048	0.001%
2/20/2015	3270.1	0.043	0.001%
2/21/2015	3011.6	0.051	0.002%
2/22/2015	2791.9	0.046	0.002%
2/23/2015	2585.1	0.042	0.002%
2/24/2015	2365.4	0.039	0.002%
2/25/2015	2197.3	0.043	0.002%
2/26/2015	2068.1	0.053	0.003%
2/27/2015	1997.0	0.076	0.004%
2/28/2015	1932.4	0.064	0.003%
3/1/2015	1848.3	0.051	0.003%
3/2/2015	1744.9	0.043	0.002%
3/3/2015	1667.4	0.04	0.002%
3/4/2015	1596.3	0.048	0.003%
3/5/2015	1518.7	0.045	0.003%
3/6/2015	1447.6	0.039	0.003%
3/7/2015	1389.5	0.044	0.003%
3/8/2015	1344.2	0.047	0.003%
3/9/2015	1305.5	0.046	0.004%
3/10/2015	1266.7	0.038	0.003%
3/11/2015	1227.9	0.049	0.004%
3/12/2015	1202.1	0.045	0.004%
3/13/2015	1169.8	0.044	0.004%
3/14/2015	1131.0	0.056	0.005%
3/15/2015	1111.6	0.077	0.007%
3/16/2015	1111.6	0.055	0.005%
3/17/2015	1059.9	0.047	0.004%
3/18/2015	1021.1	0.047	0.005%
3/19/2015	988.8	0.047	0.005%
3/20/2015	956.5	0.05	0.005%
3/21/2015	930.6	0.066	0.007%
3/22/2015	924.2	0.108	0.012%
3/23/2015	1014.6	0.151	0.015%
3/24/2015	1215.0	0.338	0.028%
3/25/2015	1473.5	0.145	0.010%
3/26/2015	1564.0	0.115	0.007%
3/27/2015	1363.6	0.08	0.006%
3/28/2015	1182.7	0.076	0.006%
3/29/2015	1066.3	0.07	0.007%
3/30/2015	995.3	0.059	0.006%
3/31/2015	950.0	0.078	0.008%
4/1/2015	904.8	0.059	0.007%
4/2/2015	866.0	0.052	0.006%
4/3/2015	840.2	0.051	0.006%
4/4/2015	814.3	0.054	0.007%
4/5/2015	820.8	0.045	0.005%
4/6/2015	995.3	0.208	0.021%

4/7/2015	2339.5	0.347	0.015%
4/8/2015	2442.9	0.148	0.006%
4/9/2015	2236.1	0.111	0.005%
4/10/2015	1719.1	0.085	0.005%
4/11/2015	1499.4	0.077	0.005%
4/12/2015	1376.6	0.065	0.005%
4/13/2015	1279.6	0.078	0.006%
4/14/2015	1221.5	0.086	0.007%
4/15/2015	1131.0	0.066	0.006%
4/16/2015	1059.9	0.087	0.008%
4/17/2015	1008.2	0.056	0.006%
4/18/2015	943.6	0.056	0.006%
4/19/2015	898.3	0.054	0.006%
4/20/2015	853.1	0.047	0.006%
4/21/2015	820.8	0.045	0.005%
4/22/2015	782.0	0.043	0.005%
4/23/2015	756.1	0.047	0.006%
4/24/2015	775.5	0.043	0.006%
4/25/2015	743.2	0.049	0.007%
4/26/2015	704.4	0.044	0.006%
4/27/2015	717.4	0.049	0.007%
4/28/2015	704.4	0.041	0.006%
4/29/2015	659.2	0.045	0.007%
4/30/2015	627.5	0.044	0.007%
5/1/2015	601.7	0.035	0.006%
5/2/2015	578.4	0.043	0.007%
5/3/2015	557.1	0.044	0.008%
5/4/2015	529.3	0.038	0.007%
5/5/2015	511.8	0.046	0.009%
5/6/2015	495.7	0.037	0.007%
5/7/2015	482.8	0.041	0.008%
5/8/2015	495.7	0.037	0.007%
5/9/2015	508.0	0.062	0.012%
5/10/2015	464.7	0.039	0.008%
5/11/2015	447.2	0.041	0.009%
5/12/2015	442.7	0.042	0.009%
5/13/2015	436.2	0.043	0.010%
5/14/2015	426.5	0.041	0.010%
5/15/2015	438.2	0.037	0.008%
5/16/2015	457.6	0.041	0.009%
5/17/2015	484.1	0.038	0.008%
5/18/2015	491.8	0.032	0.007%
5/19/2015	446.6	0.041	0.009%
5/20/2015	439.5	0.034	0.008%
5/21/2015	433.0	0.039	0.009%
5/22/2015	420.1	0.041	0.010%
5/23/2015	413.0	0.042	0.010%

5/24/2015	425.2	0.036	0.008%
5/25/2015	405.9	0.037	0.009%
5/26/2015	401.3	0.38	0.095%
5/27/2015	380.0	0.038	0.010%
5/28/2015	355.4	0.037	0.010%
5/29/2015	336.1	0.04	0.012%
5/30/2015	319.9	0.043	0.013%
5/31/2015	301.2	0.041	0.014%
6/1/2015	288.2	0.039	0.014%
6/2/2015	279.8	0.038	0.014%
6/3/2015	272.1	0.035	0.013%
6/4/2015	261.7	0.035	0.013%
6/5/2015	253.3	0.039	0.015%
6/6/2015	249.5	0.041	0.016%
6/7/2015	242.4	0.039	0.016%
6/8/2015	230.7	0.042	0.018%
6/9/2015	219.1	0.035	0.016%
6/10/2015	208.1	0.033	0.016%
6/11/2015	193.2	0.036	0.019%
6/12/2015	180.3	0.035	0.019%
6/13/2015	171.3	0.044	0.026%
6/14/2015	159.6	0.04	0.025%
6/15/2015	149.9	0.033	0.022%
6/16/2015	144.1	0.035	0.024%
6/17/2015	135.7	0.036	0.027%
6/18/2015	130.5	0.036	0.028%
6/19/2015	124.1	0.042	0.034%
6/20/2015	117.6	0.044	0.037%
6/21/2015	111.8	0.034	0.030%
6/22/2015	107.3	0.034	0.032%
6/23/2015	99.5	0.034	0.034%
6/24/2015	93.7	0.047	0.050%
6/25/2015	90.5	0.035	0.039%
6/26/2015	86.6	0.039	0.045%
6/27/2015	86.0	0.038	0.044%
6/28/2015	80.1	0.036	0.045%
6/29/2015	74.3	0.039	0.052%
6/30/2015	70.4	0.036	0.051%
7/1/2015	67.2	0.036	0.054%
7/2/2015	64.6	0.035	0.054%
7/3/2015	62.7	0.035	0.056%
7/4/2015	60.2	0.042	0.070%
7/5/2015	57.5	0.037	0.064%
7/6/2015	57.1	0.036	0.063%
7/7/2015	53.2	0.035	0.066%
7/8/2015	51.5	0.037	0.072%
7/9/2015	50.9	0.033	0.065%

7/10/2015	57.7	0.039	0.068%
7/11/2015	55.8	0.042	0.075%
7/12/2015	56.7	0.038	0.067%
7/13/2015	60.1	0.036	0.060%
7/14/2015	62.6	0.038	0.061%
7/15/2015	62.2	0.04	0.064%
7/16/2015	73.0	0.035	0.048%
7/17/2015	81.4	0.044	0.054%
7/18/2015	76.3	0.042	0.055%
7/19/2015	69.8	0.037	0.053%
7/20/2015	65.3	0.033	0.051%
7/21/2015	57.9	0.043	0.074%
7/22/2015	54.0	0.04	0.074%
7/23/2015	50.6	0.036	0.071%
7/24/2015	48.5	0.035	0.072%
7/25/2015	46.0	0.041	0.089%
7/26/2015	43.9	0.0385	0.088%
7/27/2015	43.1	0.038	0.088%
7/28/2015	43.6	0.037	0.085%
7/29/2015	46.7	0.041	0.088%
7/30/2015	43.2	0.038	0.088%
7/31/2015	41.4	0.039	0.094%
8/1/2015	40.4	0.04	0.099%
8/2/2015	39.4	0.039	0.099%
8/3/2015	38.3	0.04	0.105%
8/4/2015	35.7	0.04	0.112%
8/5/2015	34.7	0.041	0.118%
8/6/2015	33.3	0.038	0.114%
8/7/2015	33.2	0.05	0.151%
8/8/2015	32.5	0.04	0.123%
8/9/2015	32.7	0.039	0.119%
8/10/2015	32.0	0.043	0.134%
8/11/2015	31.2	0.04	0.128%
8/12/2015	29.9	0.035	0.117%
8/13/2015	28.8	0.038	0.132%
8/14/2015	26.9	0.037	0.138%
8/15/2015	26.0	0.039	0.150%
8/16/2015	24.8	0.038	0.154%
8/17/2015	24.8	0.04	0.162%
8/18/2015	25.0	0.034	0.136%
8/19/2015	24.1	0.034	0.141%
8/20/2015	24.2	0.035	0.145%
8/21/2015	24.9	0.045	0.181%
8/22/2015	24.6	0.039	0.159%
8/23/2015	24.2	0.043	0.178%
8/24/2015	23.7	0.047	0.198%
8/25/2015	23.5	0.037	0.158%

8/26/2015	22.2	0.035	0.158%
8/27/2015	21.1	0.038	0.180%
8/28/2015	20.7	0.037	0.179%
8/29/2015	22.9	0.059	0.257%
8/30/2015	23.1	0.041	0.177%
8/31/2015	22.8	0.042	0.184%
9/1/2015	22.6	0.042	0.186%
9/2/2015	21.0	0.037	0.176%
9/3/2015	20.2	0.035	0.174%
9/4/2015	20.4	0.033	0.162%
9/5/2015	20.6	0.039	0.190%
9/6/2015	19.8	0.035	0.177%
9/7/2015	19.7	0.036	0.183%
9/8/2015	19.6	0.045	0.229%
9/9/2015	20.0	0.036	0.180%
9/10/2015	19.8	0.043	0.217%
9/11/2015	20.1	0.042	0.209%
9/12/2015	20.0	0.032	0.160%
9/13/2015	19.5	0.034	0.175%
9/14/2015	18.9	0.035	0.185%
9/15/2015	18.9	0.0352	0.186%
9/16/2015	22.9	0.033	0.144%
9/17/2015	36.1	0.046	0.128%
9/18/2015	47.8	0.039	0.082%
9/19/2015	51.6	0.044	0.085%
9/20/2015	57.8	0.04	0.069%
9/21/2015	54.7	0.044	0.080%
9/22/2015	49.5	0.044	0.089%
9/23/2015	44.7	0.03	0.067%
9/24/2015	43.7	0.042	0.096%
9/25/2015	45.2	0.04	0.089%
9/26/2015	44.4	0.04	0.090%
9/27/2015	42.8	0.044	0.103%
9/28/2015	41.6	0.041	0.099%
9/29/2015	40.4	0.039	0.097%
9/30/2015	39.1	0.034	0.087%
10/1/2015	36.9	0.041	0.111%
10/2/2015	34.3	0.044	0.128%
10/3/2015	31.5	0.041	0.130%
10/4/2015	31.1	0.044	0.142%
10/5/2015	31.0	0.037	0.119%
10/6/2015	30.8	0.038	0.123%
10/7/2015	29.9	0.042	0.141%
10/8/2015	29.7	0.035	0.118%
10/9/2015	29.0	0.036	0.124%
10/10/2015	30.1	0.039	0.130%
10/11/2015	30.0	0.04	0.133%

10/12/2015	29.7	0.045	0.151%
10/13/2015	29.4	0.033	0.112%
10/14/2015	27.9	0.037	0.133%
10/15/2015	28.3	0.038	0.134%
10/16/2015	28.2	0.036	0.127%
10/17/2015	31.1	0.053	0.170%
10/18/2015	31.6	0.04	0.127%
10/19/2015	31.7	0.044	0.139%
10/20/2015	34.3	0.034	0.099%
10/21/2015	34.1	0.033	0.097%
10/22/2015	33.6	0.035	0.104%
10/23/2015	33.5	0.036	0.108%
10/24/2015	32.9	0.03	0.091%
10/25/2015	31.7	0.052	0.164%
10/26/2015	33.1	0.041	0.124%
10/27/2015	34.2	0.036	0.105%
10/28/2015	34.9	0.067	0.192%
10/29/2015	35.6	0.042	0.118%
10/30/2015	38.1	0.037	0.097%
10/31/2015	39.1	0.04	0.102%
11/1/2015	46.7	0.087	0.186%
11/2/2015	47.5	0.061	0.128%
11/3/2015	50.0	0.038	0.076%
11/4/2015	50.1	0.034	0.068%
11/5/2015	51.4	0.033	0.064%
11/6/2015	54.0	0.026	0.048%
11/7/2015	54.7	0.032	0.058%
11/8/2015	57.3	0.061	0.106%
11/9/2015	77.6	0.075	0.097%
11/10/2015	93.7	0.042	0.045%
11/11/2015	107.9	0.047	0.044%
11/12/2015	126.0	0.04	0.032%
11/13/2015	116.3	0.039	0.034%
11/14/2015	104.7	0.046	0.044%
11/15/2015	154.5	0.176	0.114%
11/16/2015	186.8	0.072	0.039%
11/17/2015	164.2	0.049	0.030%
11/18/2015	175.1	0.08	0.046%
11/19/2015	178.4	0.086	0.048%
11/20/2015	169.3	0.071	0.042%
11/21/2015	160.9	0.068	0.042%
11/22/2015	146.1	0.054	0.037%
11/23/2015	133.1	0.051	0.038%
11/24/2015	147.4	0.176	0.119%
11/25/2015	166.7	0.11	0.066%
11/26/2015	168.7	0.068	0.040%
11/27/2015	166.1	0.053	0.032%

11/28/2015	162.2	0.051	0.031%
11/29/2015	159.6	0.049	0.031%
11/30/2015	154.5	0.047	0.030%
12/1/2015	145.4	0.045	0.031%
12/2/2015	140.9	0.052	0.037%
12/3/2015	212.6	0.143	0.067%
12/4/2015	1079.3	0.108	0.010%
12/5/2015	1744.9	0.076	0.004%
12/6/2015	2242.6	0.118	0.005%
12/7/2015	3612.7	0.077	0.002%
12/8/2015	2869.4	0.067	0.002%
12/9/2015	2707.9	0.141	0.005%
12/10/2015	12343.8	0.239	0.002%
12/11/2015	20680.7	0.269	0.001%
12/12/2015	10405.0	0.23	0.002%
12/13/2015	10598.9	0.474	0.004%
12/14/2015	18935.8	0.432	0.002%
12/15/2015	8336.9	0.208	0.002%
12/16/2015	4769.5	0.143	0.003%
12/17/2015	3386.5	0.134	0.004%
12/18/2015	6527.3	0.47	0.007%
12/19/2015	18677.3	0.358	0.002%
12/20/2015	12602.3	0.237	0.002%
12/21/2015	19840.6	0.54	0.003%
12/22/2015	69151.1	0.467	0.001%
12/23/2015	41878.4	0.309	0.001%
12/24/2015	21262.3	0.387	0.002%
12/25/2015	16673.8	0.408	0.002%
12/26/2015	11891.4	0.216	0.002%
12/27/2015	8789.3	0.17	0.002%
12/28/2015	7109.0	0.246	0.003%
12/29/2015	6081.4	0.152	0.002%
12/30/2015	5299.4	0.16	0.003%
12/31/2015	4679.0	0.115	0.002%
1/1/2016	4129.7	0.095	0.002%
1/2/2016	3657.9	0.084	0.002%
1/3/2016	3296.0	0.076	0.002%
1/4/2016	3321.8	0.085	0.003%
1/5/2016	11568.3	0.355	0.003%
1/6/2016	18548.0	0.309	0.002%
1/7/2016	17384.7	0.247	0.001%
1/8/2016	12731.6	0.217	0.002%
1/9/2016	10663.5	0.277	0.003%
1/10/2016	11115.9	0.202	0.002%
1/11/2016	9047.8	0.137	0.002%
1/12/2016	7626.0	0.224	0.003%
1/13/2016	15962.9	0.332	0.002%

1/14/2016	28823.7	0.405	0.001%
1/15/2016	31085.7	0.305	0.001%
1/16/2016	27919.0	0.332	0.001%
1/17/2016	47953.4	0.592	0.001%
1/18/2016	91124.4	0.41	0.000%
1/19/2016	46984.0	0.309	0.001%
1/20/2016	40844.4	0.207	0.001%
1/21/2016	26432.5	0.152	0.001%
1/22/2016	21262.3	0.277	0.001%
1/23/2016	27014.2	0.408	0.002%
1/24/2016	31279.6	0.241	0.001%
1/25/2016	23395.0	0.173	0.001%
1/26/2016	18224.9	0.125	0.001%
1/27/2016	14282.6	0.107	0.001%
1/28/2016	12214.5	0.298	0.002%
1/29/2016	22231.8	0.515	0.002%
1/30/2016	44205.0	0.326	0.001%
1/31/2016	27337.3	0.193	0.001%
2/1/2016	18354.1	0.193	0.001%
2/2/2016	13636.3	0.136	0.001%
2/3/2016	11051.3	0.139	0.001%
2/4/2016	9758.7	0.12	0.001%
2/5/2016	8595.4	0.107	0.001%
2/6/2016	7302.9	0.086	0.001%
2/7/2016	6339.9	0.08	0.001%
2/8/2016	5680.7	0.073	0.001%
2/9/2016	5215.4	0.067	0.001%
2/10/2016	4782.4	0.062	0.001%
2/11/2016	4388.2	0.059	0.001%
2/12/2016	4052.1	0.053	0.001%
2/13/2016	3838.9	0.054	0.001%
2/14/2016	3612.7	0.051	0.001%
2/15/2016	3386.5	0.052	0.002%
2/16/2016	3321.8	0.056	0.002%
2/17/2016	3218.4	0.045	0.001%
2/18/2016	3929.3	0.078	0.002%
2/19/2016	9952.6	0.114	0.001%
2/20/2016	12602.3	0.214	0.002%
2/21/2016	8724.7	0.125	0.001%
2/22/2016	6656.6	0.103	0.002%
2/23/2016	5557.9	0.091	0.002%
2/24/2016	4918.1	0.073	0.001%
2/25/2016	4459.3	0.07	0.002%
2/26/2016	4136.1	0.061	0.001%
2/27/2016	4142.6	0.072	0.002%
2/28/2016	4187.8	0.063	0.002%
2/29/2016	3793.6	0.065	0.002%

3/1/2016	3528.6	0.059	0.002%
3/2/2016	3457.6	0.058	0.002%
3/3/2016	4291.2	0.075	0.002%
3/4/2016	5499.8	0.083	0.002%
3/5/2016	9047.8	0.067	0.001%
3/6/2016	53769.8	0.322	0.001%
3/7/2016	49569.1	0.4	0.001%
3/8/2016	31473.4	0.236	0.001%
3/9/2016	21003.8	0.151	0.001%
3/10/2016	31990.5	0.179	0.001%
3/11/2016	42136.9	0.356	0.001%
3/12/2016	35027.9	0.277	0.001%
3/13/2016	58487.6	0.322	0.001%
3/14/2016	83369.1	0.329	0.000%
3/15/2016	43623.4	0.229	0.001%
3/16/2016	27143.4	0.155	0.001%
3/17/2016	19711.3	0.122	0.001%
3/18/2016	15381.3	0.097	0.001%
3/19/2016	12602.3	0.088	0.001%
3/20/2016	11374.4	0.08	0.001%
3/21/2016	16092.2	0.111	0.001%
3/22/2016	26432.5	0.213	0.001%
3/23/2016	20486.8	0.231	0.001%
3/24/2016	15381.3	0.15	0.001%
3/25/2016	12602.3	0.115	0.001%
3/26/2016	10792.7	0.089	0.001%
3/27/2016	9241.7	0.079	0.001%
3/28/2016	8143.0	0.08	0.001%
3/29/2016	7109.0	0.065	0.001%
3/30/2016	6307.6	0.06	0.001%
3/31/2016	5616.1	0.059	0.001%
4/1/2016	5086.2	0.055	0.001%
4/2/2016	4653.2	0.056	0.001%
4/3/2016	4097.4	0.058	0.001%
4/4/2016	3800.1	0.057	0.001%
4/5/2016	3548.0	0.105	0.003%
4/6/2016	3315.4	0.053	0.002%
4/7/2016	3140.9	0.055	0.002%
4/8/2016	3024.6	0.056	0.002%
4/9/2016	2934.1	0.061	0.002%
4/10/2016	2830.7	0.054	0.002%
4/11/2016	2720.8	0.049	0.002%
4/12/2016	2591.6	0.048	0.002%
4/13/2016	2501.1	0.074	0.003%
4/14/2016	2559.2	0.143	0.006%
4/15/2016	2630.3	0.076	0.003%
4/16/2016	2449.4	0.062	0.003%

4/17/2016	2236.1	0.061	0.003%
4/18/2016	2068.1	0.056	0.003%
4/19/2016	1938.8	0.052	0.003%
4/20/2016	1848.3	0.051	0.003%
4/21/2016	1790.2	0.068	0.004%
4/22/2016	2132.7	0.159	0.007%
4/23/2016	3677.3	0.109	0.003%
4/24/2016	3638.5	0.102	0.003%
4/25/2016	2785.4	0.077	0.003%
4/26/2016	2410.6	0.064	0.003%
4/27/2016	2223.2	0.11	0.005%
4/28/2016	2132.7	0.082	0.004%
4/29/2016	2048.7	0.075	0.004%
4/30/2016	1893.6	0.066	0.003%
5/1/2016	1770.8	0.067	0.004%
5/2/2016	1667.4	0.078	0.005%
5/3/2016	1583.4	0.065	0.004%
5/4/2016	1531.7	0.06	0.004%
5/5/2016	1505.8	0.063	0.004%
5/6/2016	1635.1	0.063	0.004%
5/7/2016	1744.9	0.058	0.003%
5/8/2016	1615.7	0.046	0.003%
5/9/2016	1531.7	0.051	0.003%
5/10/2016	1467.0	0.047	0.003%
5/11/2016	1383.0	0.044	0.003%
5/12/2016	1286.1	0.054	0.004%
5/13/2016	1215.0	0.051	0.004%
5/14/2016	1163.3	0.049	0.004%
5/15/2016	1118.1	0.051	0.005%
5/16/2016	1098.7	0.052	0.005%
5/17/2016	1053.4	0.032	0.003%
5/18/2016	975.9	0.046	0.005%
5/19/2016	917.7	0.05	0.005%
5/20/2016	866.0	0.047	0.005%
5/21/2016	872.5	0.046	0.005%
5/22/2016	950.0	0.086	0.009%
5/23/2016	950.0	0.065	0.007%
5/24/2016	956.5	0.058	0.006%
5/25/2016	924.2	0.047	0.005%
5/26/2016	962.9	0.049	0.005%
5/27/2016	930.6	0.049	0.005%
5/28/2016	840.2	0.049	0.006%
5/29/2016	769.1	0.046	0.006%
5/30/2016	717.4	0.052	0.007%
5/31/2016	672.1	0.056	0.008%
6/1/2016	641.1	0.044	0.007%
6/2/2016	604.3	0.045	0.007%

6/3/2016	570.0	0.046	0.008%
6/4/2016	544.8	0.047	0.009%
6/5/2016	521.5	0.053	0.010%
6/6/2016	498.9	0.053	0.011%
6/7/2016	481.5	0.056	0.012%
6/8/2016	453.0	0.047	0.010%
6/9/2016	430.4	0.045	0.010%
6/10/2016	415.6	0.042	0.010%
6/11/2016	396.8	0.043	0.011%
6/12/2016	381.9	0.042	0.011%
6/13/2016	365.1	0.046	0.013%
6/14/2016	356.7	0.0433	0.012%
6/15/2016	341.9	0.037	0.011%
6/16/2016	334.1	0.044	0.013%
6/17/2016	338.0	0.045	0.013%
6/18/2016	354.8	0.044	0.012%
6/19/2016	371.6	0.044	0.012%
6/20/2016	371.6	0.047	0.013%
6/21/2016	372.3	0.045	0.012%
6/22/2016	339.9	0.038	0.011%
6/23/2016	314.1	0.04	0.013%
6/24/2016	291.5	0.04	0.014%
6/25/2016	281.8	0.039	0.014%
6/26/2016	279.2	0.042	0.015%
6/27/2016	263.7	0.044	0.017%
6/28/2016	249.5	0.044	0.018%
6/29/2016	239.8	0.04	0.017%
6/30/2016	223.6	0.047	0.021%
7/1/2016	206.8	0.039	0.019%
7/2/2016	196.5	0.046	0.023%
7/3/2016	189.4	0.04	0.021%
7/4/2016	178.4	0.042	0.024%
7/5/2016	168.0	0.041	0.024%
7/6/2016	160.3	0.041	0.026%
7/7/2016	154.5	0.039	0.025%
7/8/2016	153.8	0.043	0.028%
7/9/2016	151.2	0.043	0.028%
7/10/2016	148.0	0.044	0.030%
7/11/2016	142.8	0.046	0.032%
7/12/2016	137.0	0.041	0.030%
7/13/2016	136.4	0.043	0.032%
7/14/2016	133.1	0.041	0.031%
7/15/2016	130.5	0.042	0.032%
7/16/2016	126.0	0.044	0.035%
7/17/2016	123.4	0.042	0.034%
7/18/2016	119.6	0.046	0.038%
7/19/2016	112.5	0.038	0.034%

7/20/2016	107.3	0.042	0.039%
7/21/2016	105.3	0.049	0.047%
7/22/2016	107.3	0.041	0.038%
7/23/2016	104.7	0.043	0.041%
7/24/2016	102.1	0.047	0.046%
7/25/2016	98.9	0.048	0.049%
7/26/2016	95.0	0.042	0.044%
7/27/2016	91.8	0.044	0.048%
7/28/2016	91.1	0.041	0.045%
7/29/2016	88.5	0.043	0.049%
7/30/2016	84.7	0.044	0.052%
7/31/2016	78.8	0.042	0.053%
8/1/2016	75.6	0.044	0.058%
8/2/2016	70.4	0.039	0.055%
8/3/2016	66.6	0.041	0.062%
8/4/2016	64.4	0.042	0.065%
8/5/2016	62.7	0.041	0.065%
8/6/2016	60.1	0.041	0.068%
8/7/2016	58.6	0.04	0.068%
8/8/2016	57.8	0.045	0.078%
8/9/2016	57.2	0.044	0.077%
8/10/2016	56.0	0.047	0.084%
8/11/2016	55.6	0.042	0.076%
8/12/2016	54.9	0.049	0.089%
8/13/2016	53.8	0.046	0.085%
8/14/2016	53.9	0.042	0.078%
8/15/2016	53.6	0.043	0.080%
8/16/2016	51.8	0.038	0.073%
8/17/2016	50.0	0.04	0.080%
8/18/2016	48.0	0.041	0.085%
8/19/2016	46.8	0.042	0.090%
8/20/2016	44.4	0.042	0.095%
8/21/2016	41.7	0.044	0.106%
8/22/2016	40.8	0.044	0.108%
8/23/2016	40.5	0.041	0.101%
8/24/2016	38.4	0.041	0.107%
8/25/2016	37.4	0.041	0.110%
8/26/2016	35.9	0.041	0.114%
8/27/2016	35.0	0.043	0.123%
8/28/2016	34.8	0.043	0.123%
8/29/2016	33.8	0.047	0.139%
8/30/2016	33.6	0.035	0.104%
8/31/2016	32.8	0.051	0.156%
9/1/2016	32.7	0.051	0.156%
9/2/2016	35.3	0.054	0.153%
9/3/2016	35.4	0.044	0.124%
9/4/2016	34.5	0.038	0.110%

9/5/2016	33.8	0.038	0.112%
9/6/2016	34.2	0.05	0.146%
9/7/2016	34.2	0.041	0.120%
9/8/2016	33.4	0.044	0.132%
9/9/2016	33.4	0.042	0.126%
9/10/2016	33.1	0.042	0.127%
9/11/2016	34.2	0.047	0.137%
9/12/2016	32.4	0.045	0.139%
9/13/2016	31.4	0.042	0.134%
9/14/2016	30.8	0.041	0.133%
9/15/2016	30.1	0.043	0.143%
9/16/2016	31.0	0.039	0.126%
9/17/2016	30.4	0.041	0.135%
9/18/2016	29.6	0.042	0.142%
9/19/2016	29.8	0.045	0.151%
9/20/2016	29.9	0.045	0.151%
9/21/2016	29.4	0.04	0.136%
9/22/2016	29.2	0.046	0.157%
9/23/2016	29.6	0.043	0.145%
9/24/2016	29.7	0.042	0.142%
9/25/2016	29.7	0.049	0.165%
9/26/2016	31.4	0.046	0.146%
9/27/2016	31.1	0.045	0.145%
9/28/2016	29.8	0.039	0.131%
9/29/2016	29.9	0.045	0.151%
9/30/2016	30.9	0.043	0.139%
10/1/2016	31.0	0.047	0.152%
10/2/2016	34.3	0.052	0.152%
10/3/2016	37.1	0.045	0.121%
10/4/2016	39.4	0.044	0.112%
10/5/2016	44.1	0.045	0.102%
10/6/2016	48.3	0.043	0.089%
10/7/2016	48.7	0.069	0.142%
10/8/2016	48.8	0.045	0.092%
10/9/2016	50.9	0.049	0.096%
10/10/2016	52.9	0.05	0.095%
10/11/2016	53.3	0.043	0.081%
10/12/2016	52.0	0.048	0.092%
10/13/2016	52.7	0.091	0.173%
10/14/2016	163.5	0.091	0.056%
10/15/2016	685.0	0.187	0.027%
10/16/2016	2126.2	0.158	0.007%
10/17/2016	3134.4	0.105	0.003%
10/18/2016	4013.3	0.082	0.002%
10/19/2016	2578.6	0.067	0.003%
10/20/2016	1589.8	0.059	0.004%
10/21/2016	1027.6	0.049	0.005%

10/22/2016	730.3	0.046	0.006%
10/23/2016	558.4	0.05	0.009%
10/24/2016	557.1	0.147	0.026%
10/25/2016	2242.6	0.076	0.003%
10/26/2016	3270.1	0.071	0.002%
10/27/2016	4045.7	0.367	0.009%
10/28/2016	8143.0	0.135	0.002%
10/29/2016	5680.7	0.09	0.002%
10/30/2016	10405.0	0.233	0.002%
10/31/2016	22619.5	0.167	0.001%
11/1/2016	16027.5	0.176	0.001%
11/2/2016	11956.0	0.127	0.001%
11/3/2016	6850.5	0.09	0.001%
11/4/2016	4601.5	0.075	0.002%
11/5/2016	3405.9	0.064	0.002%
11/6/2016	3205.5	0.105	0.003%
11/7/2016	3373.5	0.103	0.003%
11/8/2016	2908.2	0.073	0.003%
11/9/2016	2430.0	0.058	0.002%
11/10/2016	2106.8	0.058	0.003%
11/11/2016	1854.8	0.054	0.003%
11/12/2016	1906.5	0.051	0.003%
11/13/2016	1945.3	0.059	0.003%
11/14/2016	1841.9	0.059	0.003%
11/15/2016	1699.7	0.06	0.004%
11/16/2016	1913.0	0.104	0.005%
11/17/2016	2016.4	0.09	0.004%
11/18/2016	1828.9	0.07	0.004%
11/19/2016	3224.9	0.058	0.002%
11/20/2016	9177.1	0.136	0.001%
11/21/2016	9823.3	0.272	0.003%
11/22/2016	6915.1	0.244	0.004%
11/23/2016	7884.5	0.284	0.004%
11/24/2016	8530.8	0.465	0.005%
11/25/2016	7238.2	0.203	0.003%
11/26/2016	9112.4	0.209	0.002%
11/27/2016	21327.0	0.383	0.002%
11/28/2016	18418.8	0.357	0.002%
11/29/2016	13054.7	0.245	0.002%
11/30/2016	9177.1	0.156	0.002%
12/1/2016	7109.0	0.101	0.001%
12/2/2016	5700.1	0.081	0.001%
12/3/2016	4711.3	0.073	0.002%
12/4/2016	4013.3	0.075	0.002%
12/5/2016	3580.3	0.07	0.002%
12/6/2016	3315.4	0.087	0.003%
12/7/2016	3076.3	0.141	0.005%

12/8/2016	4394.6	0.132	0.003%
12/9/2016	9241.7	0.274	0.003%
12/10/2016	41296.8	0.548	0.001%
12/11/2016	48082.6	0.231	0.000%
12/12/2016	20745.3	0.154	0.001%
12/13/2016	13571.7	0.136	0.001%
12/14/2016	17643.2	0.444	0.003%
12/15/2016	58746.1	0.621	0.001%
12/16/2016	76260.1	0.279	0.000%
12/17/2016	32701.4	0.175	0.001%
12/18/2016	19323.5	0.132	0.001%
12/19/2016	13571.7	0.111	0.001%
12/20/2016	10469.6	0.085	0.001%
12/21/2016	8595.4	0.079	0.001%
12/22/2016	7302.9	0.07	0.001%
12/23/2016	7302.9	0.261	0.004%
12/24/2016	13248.6	0.328	0.002%
12/25/2016	10017.2	0.164	0.002%
12/26/2016	7884.5	0.121	0.002%
12/27/2016	6592.0	0.091	0.001%
12/28/2016	5835.8	0.082	0.001%
12/29/2016	5273.6	0.063	0.001%
12/30/2016	4827.7	0.074	0.002%
12/31/2016	4452.8	0.068	0.002%
1/1/2017	4155.5	0.081	0.002%
1/2/2017	3974.6	0.14	0.004%
1/3/2017	4556.2	0.365	0.008%
1/4/2017	16738.4	0.358	0.002%
1/5/2017	16932.3	0.171	0.001%
1/6/2017	11245.1	0.127	0.001%
1/7/2017	13765.6	0.275	0.002%
1/8/2017	41878.4	0.547	0.001%
1/9/2017	100818.4	0.337	0.000%
1/10/2017	90478.1	0.439	0.000%
1/11/2017	137655.9	0.333	0.000%
1/12/2017	55062.4	0.241	0.000%
1/13/2017	32184.3	0.163	0.001%
1/14/2017	22490.3	0.129	0.001%
1/15/2017	17384.7	0.1063	0.001%
1/16/2017	14282.6	0.091	0.001%
1/17/2017	12149.9	0.078	0.001%
1/18/2017	14476.5	0.46	0.003%
1/19/2017	42395.4	0.479	0.001%
1/20/2017	47824.1	0.669	0.001%
1/21/2017	56419.5	0.463	0.001%
1/22/2017	50280.0	0.532	0.001%
1/23/2017	41619.9	0.336	0.001%

1/24/2017	29987.0	0.19	0.001%
1/25/2017	22037.9	0.148	0.001%
1/26/2017	17255.5	0.123	0.001%
1/27/2017	14347.2	0.092	0.001%
1/28/2017	12343.8	0.082	0.001%
1/29/2017	10986.6	0.073	0.001%
1/30/2017	10017.2	0.067	0.001%
1/31/2017	9241.7	0.063	0.001%
2/1/2017	8724.7	0.058	0.001%
2/2/2017	8724.7	0.06	0.001%
2/3/2017	15445.9	0.171	0.001%
2/4/2017	32830.6	0.131	0.000%
2/5/2017	29922.4	0.148	0.000%
2/6/2017	36708.2	0.261	0.001%
2/7/2017	80784.0	0.354	0.000%
2/8/2017	84015.4	0.252	0.000%
2/9/2017	96294.5	0.521	0.001%
2/10/2017	102111.0	0.439	0.000%
2/11/2017	48082.6	0.261	0.001%
2/12/2017	30827.2	0.172	0.001%
2/13/2017	22490.3	0.122	0.001%
2/14/2017	17901.7	0.091	0.001%
2/15/2017	14993.5	0.145	0.001%
2/16/2017	24170.6	0.672	0.003%
2/17/2017	29793.1	0.545	0.002%
2/18/2017	26884.9	0.394	0.001%
2/19/2017	23653.6	0.313	0.001%
2/20/2017	26755.7	0.394	0.001%
2/21/2017	62042.1	0.359	0.001%
2/22/2017	47888.8	0.246	0.001%
2/23/2017	30891.8	0.226	0.001%
2/24/2017	22425.6	0.149	0.001%
2/25/2017	17707.9	0.207	0.001%
2/26/2017	14735.0	0.159	0.001%
2/27/2017	12860.8	0.155	0.001%
2/28/2017	11245.1	0.122	0.001%
3/1/2017	9694.1		
3/2/2017	8530.8		
3/3/2017	7690.6		
3/4/2017	7367.5		
3/5/2017	9888.0		
3/6/2017	12537.7		
3/7/2017	13636.3		
3/8/2017	14541.1		
3/9/2017	13830.2		
3/10/2017	12731.6		
3/11/2017	11439.0		

3/12/2017	10081.8		
3/13/2017	8983.2		
3/14/2017	8078.4		
3/15/2017	7626.0		
3/16/2017	7367.5		
3/17/2017	6979.7		
3/18/2017	6527.3		
3/19/2017	7238.2		
3/20/2017	7044.4		
3/21/2017	13442.5		
3/22/2017	17772.5		
3/23/2017	15833.7		
3/24/2017	17061.6		
3/25/2017	24105.9		
3/26/2017	16027.5		
3/27/2017	14218.0		
3/28/2017	12925.4		
3/29/2017	10469.6		
3/30/2017	9500.2		
3/31/2017	9177.1		
4/1/2017	7884.5	0.092	0.001%
4/2/2017	6979.7	0.069	0.001%
4/3/2017	6456.3	0.077	0.001%
4/4/2017	6049.1	0.053	0.001%
4/5/2017	5648.4	0.049	0.001%
4/6/2017	5616.1	0.053	0.001%
4/7/2017	12343.8	0.071	0.001%
4/8/2017	21391.6	0.209	0.001%
4/9/2017	16544.6	0.17	0.001%
4/10/2017	12666.9	0.116	0.001%
4/11/2017	11115.9	0.095	0.001%
4/12/2017	11568.3	0.093	0.001%
4/13/2017	18871.1	0.192	0.001%
4/14/2017	18806.5	0.194	0.001%
4/15/2017	14735.0	0.1231	0.001%
4/16/2017	12149.9	0.094	0.001%
4/17/2017	11115.9	0.093	0.001%
4/18/2017	12473.0	0.135	0.001%
4/19/2017	12990.1	0.179	0.001%
4/20/2017	16415.3	0.148	0.001%
4/21/2017	13765.6	0.11	0.001%
4/22/2017	11245.1	0.078	0.001%
4/23/2017	9694.1	0.074	0.001%
4/24/2017	8595.4	0.066	0.001%
4/25/2017	8336.9	0.153	0.002%
4/26/2017	7884.5	0.093	0.001%
4/27/2017	7949.1	0.143	0.002%

4/28/2017	7302.9	0.0113	0.000%
4/29/2017	6339.9	0.083	0.001%
4/30/2017	5642.0	0.053	0.001%
5/1/2017	5241.3	0.053	0.001%
5/2/2017	5008.6	0.085	0.002%
5/3/2017	5079.7	0.075	0.001%
5/4/2017	4956.9	0.017	0.000%
5/5/2017	4743.6	0.08	0.002%
5/6/2017	4420.5	0.053	0.001%
5/7/2017	3961.6	0.051	0.001%
5/8/2017	3489.9	0.052	0.001%
5/9/2017	3153.8	0.042	0.001%
5/10/2017	2992.2	0.039	0.001%
5/11/2017	2934.1	0.05	0.002%
5/12/2017	2869.4	0.048	0.002%
5/13/2017	2720.8	0.053	0.002%
5/14/2017	2507.5	0.048	0.002%
5/15/2017	2339.5	0.047	0.002%
5/16/2017	2249.0	0.088	0.004%
5/17/2017	2197.3	0.058	0.003%
5/18/2017	2132.7	0.05	0.002%
5/19/2017	2003.4	0.042	0.002%
5/20/2017	1919.4	0.044	0.002%
5/21/2017	1874.2	0.054	0.003%
5/22/2017	1854.8	0.045	0.002%
5/23/2017	1803.1	0.045	0.002%
5/24/2017	1835.4	0.04	0.002%
5/25/2017	1854.8	0.04	0.002%
5/26/2017	1783.7	0.036	0.002%
5/27/2017	1680.3	0.038	0.002%
5/28/2017	1570.4	0.039	0.002%
5/29/2017	1480.0	0.047	0.003%
5/30/2017	1408.9	0.041	0.003%
5/31/2017	1370.1	0.042	0.003%
6/1/2017	1324.9	0.042	0.003%
6/2/2017	1253.8	0.037	0.003%
6/3/2017	1189.1	0.039	0.003%
6/4/2017	1124.5	0.04	0.004%
6/5/2017	1059.9	0.041	0.004%
6/6/2017	1014.6	0.039	0.004%
6/7/2017	969.4	0.04	0.004%
6/8/2017	1008.2	0.042	0.004%
6/9/2017	1040.5	0.057	0.005%
6/10/2017	1053.4	0.044	0.004%
6/11/2017	1001.7	0.046	0.005%
6/12/2017	917.7	0.056	0.006%
6/13/2017	872.5	0.044	0.005%

6/14/2017	833.7	0.041	0.005%
6/15/2017	782.0	0.041	0.005%
6/16/2017	736.8	0.041	0.006%
6/17/2017	691.5	0.042	0.006%
6/18/2017	659.2	0.042	0.006%
6/19/2017	634.0	0.056	0.009%
6/20/2017	610.1	0.042	0.007%
6/21/2017	580.4	0.035	0.006%
6/22/2017	546.7	0.039	0.007%
6/23/2017	520.2	0.035	0.007%
6/24/2017	493.8	0.035	0.007%
6/25/2017	473.7	0.036	0.008%
6/26/2017	449.2	0.041	0.009%
6/27/2017	421.4	0.039	0.009%
6/28/2017	406.5	0.043	0.011%
6/29/2017	388.4	0.044	0.011%
6/30/2017	369.0	0.041	0.011%
7/1/2017	350.9	0.04	0.011%
7/2/2017	334.8	0.041	0.012%
7/3/2017	319.3	0.051	0.016%
7/4/2017	303.1	0.036	0.012%
7/5/2017	292.1	0.038	0.013%
7/6/2017	282.4	0.038	0.013%
7/7/2017	273.4	0.034	0.012%
7/8/2017	265.0	0.037	0.014%
7/9/2017	258.5	0.042	0.016%
7/10/2017	254.0	0.043	0.017%
7/11/2017	248.2	0.04	0.016%
7/12/2017	241.7	0.041	0.017%
7/13/2017	235.9	0.039	0.017%
7/14/2017	230.1	0.037	0.016%
7/15/2017	224.3	0.041	0.018%
7/16/2017	216.5	0.039	0.018%
7/17/2017	208.7	0.041	0.020%
7/18/2017	198.4	0.034	0.017%
7/19/2017	192.6	0.039	0.020%
7/20/2017	186.1	0.036	0.019%
7/21/2017	180.3	0.038	0.021%
7/22/2017	177.7	0.041	0.023%
7/23/2017	175.1	0.044	0.025%
7/24/2017	170.0	0.044	0.026%
7/25/2017	164.8	0.045	0.027%
7/26/2017	161.6	0.041	0.025%
7/27/2017	155.1	0.039	0.025%
7/28/2017	149.9	0.037	0.025%
7/29/2017	146.1	0.051	0.035%
7/30/2017	144.1	0.029	0.020%

7/31/2017	140.9	0.045	0.032%
8/1/2017	137.0	0.048	0.035%
8/2/2017	133.8	0.043	0.032%
8/3/2017	129.3	0.046	0.036%
8/4/2017	122.8	0.035	0.029%
8/5/2017	117.0	0.036	0.031%
8/6/2017	112.5	0.032	0.028%
8/7/2017	108.6	0.04	0.037%
8/8/2017	105.3	0.042	0.040%
8/9/2017	102.1	0.041	0.040%
8/10/2017	102.1	0.044	0.043%
8/11/2017	100.2	0.045	0.045%
8/12/2017	100.2	0.037	0.037%
8/13/2017	99.5	0.041	0.041%
8/14/2017	100.8	0.045	0.045%
8/15/2017	100.8	0.044	0.044%
8/16/2017	100.2	0.039	0.039%
8/17/2017	100.8	0.038	0.038%
8/18/2017	96.9	0.044	0.045%
8/19/2017	95.0	0.037	0.039%
8/20/2017	94.4	0.037	0.039%
8/21/2017	93.1	0.038	0.041%
8/22/2017	91.8	0.043	0.047%
8/23/2017	89.8	0.039	0.043%
8/24/2017	91.1	0.041	0.045%
8/25/2017	89.8	0.038	0.042%
8/26/2017	89.8	0.036	0.040%
8/27/2017	89.2	0.04	0.045%
8/28/2017	86.0	0.041	0.048%
8/29/2017	83.4	0.046	0.055%
8/30/2017	80.1	0.036	0.045%
8/31/2017	79.5	0.037	0.047%
9/1/2017	78.2	0.039	0.050%
9/2/2017	76.9	0.04	0.052%
9/3/2017	74.3	0.043	0.058%
9/4/2017	74.3	0.046	0.062%
9/5/2017	73.7	0.051	0.069%
9/6/2017	71.7	0.033	0.046%
9/7/2017	72.4	0.04	0.055%
9/8/2017	76.3	0.041	0.054%
9/9/2017	78.2	0.038	0.049%
9/10/2017	78.2	0.039	0.050%
9/11/2017	80.1	0.044	0.055%
9/12/2017	80.1	0.041	0.051%
9/13/2017	78.2	0.031	0.040%
9/14/2017	76.3	0.037	0.049%
9/15/2017	76.3	0.035	0.046%

9/16/2017	74.3	0.034	0.046%
9/17/2017	75.0	0.034	0.045%
9/18/2017	75.6	0.041	0.054%
9/19/2017	78.8	0.046	0.058%
9/20/2017	81.4	0.038	0.047%
9/21/2017	85.3	0.049	0.057%
9/22/2017	97.6	0.04	0.041%
9/23/2017	98.9	0.036	0.036%
9/24/2017	96.3	0.038	0.039%
9/25/2017	96.3	0.042	0.044%
9/26/2017	93.7	0.046	0.049%
9/27/2017	92.4	0.033	0.036%
9/28/2017	90.5	0.036	0.040%
9/29/2017	85.3	0.036	0.042%
9/30/2017	80.8	0.037	0.046%
10/1/2017	80.8	0.037	0.046%
10/2/2017	77.6	0.0374	0.048%
10/3/2017	75.6	0.053	0.070%
10/4/2017	74.3	0.05	0.067%
10/5/2017	74.3	0.049	0.066%
10/6/2017	73.7	0.048	0.065%
10/7/2017	71.7	0.031	0.043%
10/8/2017	72.4	0.03	0.041%
10/9/2017	71.7	0.036	0.050%
10/10/2017	71.1	0.036	0.051%
10/11/2017	69.8	0.033	0.047%
10/12/2017	69.8	0.032	0.046%
10/13/2017	70.4	0.029	0.041%
10/14/2017	70.4	0.031	0.044%
10/15/2017	74.3	0.031	0.042%
10/16/2017	72.4	0.046	0.064%
10/17/2017	72.4	0.04	0.055%
10/18/2017	73.0	0.035	0.048%
10/19/2017	81.4	0.035	0.043%
10/20/2017	100.2	0.063	0.063%
10/21/2017	117.6	0.0653	0.056%
10/22/2017	130.5	0.042	0.032%
10/23/2017	143.5	0.042	0.029%
10/24/2017	141.5	0.042	0.030%
10/25/2017	136.4	0.037	0.027%
10/26/2017	126.0	0.037	0.029%
10/27/2017	117.0	0.051	0.044%
10/28/2017	109.9	0.028	0.025%
10/29/2017	103.4	0.026	0.025%
10/30/2017	98.2	0.03	0.031%
10/31/2017	95.0	0.038	0.040%
11/1/2017	91.8	0.0586	0.064%

11/2/2017	89.8	0.022	0.024%
11/3/2017	99.5	0.099	0.099%
11/4/2017	114.4	0.057	0.050%
11/5/2017	122.8	0.053	0.043%
11/6/2017	125.4	0.021	0.017%
11/7/2017	132.5	0.05	0.038%
11/8/2017	161.6	0.059	0.037%
11/9/2017	339.9	0.068	0.020%
11/10/2017	565.5	0.119	0.021%
11/11/2017	1085.7	0.071	0.007%
11/12/2017	1182.7	0.111	0.009%
11/13/2017	1014.6	0.13	0.013%
11/14/2017	1001.7	0.231	0.023%
11/15/2017	1189.1	0.099	0.008%
11/16/2017	2572.2	0.128	0.005%
11/17/2017	6915.1	0.089	0.001%
11/18/2017	3657.9	0.046	0.001%
11/19/2017	2068.1	0.041	0.002%
11/20/2017	2514.0	0.286	0.011%
11/21/2017	17578.6	0.159	0.001%
11/22/2017	7819.9	0.128	0.002%
11/23/2017	3845.3	0.111	0.003%
11/24/2017	2630.3	0.09	0.003%
11/25/2017	2016.4	0.056	0.003%
11/26/2017	1984.1	0.085	0.004%
11/27/2017	7884.5	0.116	0.001%
11/28/2017	8013.8	0.072	0.001%
11/29/2017	4672.5	0.065	0.001%
11/30/2017	3199.0	0.053	0.002%
12/1/2017	2391.2	0.042	0.002%
12/2/2017	1938.8	0.187	0.010%
12/3/2017	1770.8	0.313	0.018%
12/4/2017	1628.6	0.229	0.014%
12/5/2017	1454.1	0.126	0.009%
12/6/2017	1260.2	0.077	0.006%
12/7/2017	1124.5	0.059	0.005%
12/8/2017	1014.6	0.0453	0.004%
12/9/2017	924.2	0.044	0.005%
12/10/2017	846.6	0.079	0.009%
12/11/2017	782.0	0.039	0.005%
12/12/2017	736.8	0.077	0.010%
12/13/2017	691.5	0.047	0.007%
12/14/2017	652.7	0.043	0.007%
12/15/2017	615.3	0.081	0.013%
12/16/2017	589.4	0.052	0.009%
12/17/2017	564.8	0.048	0.008%
12/18/2017	542.2	0.021	0.004%

12/19/2017	533.8	0.072	0.013%
12/20/2017	593.9	0.099	0.017%
12/21/2017	623.0	0.078	0.013%
12/22/2017	590.7	0.069	0.012%
12/23/2017	563.5	0.044	0.008%
12/24/2017	522.8	0.062	0.012%
12/25/2017	497.6	0.062	0.012%
12/26/2017	478.2	0.058	0.012%
12/27/2017	462.1	0.055	0.012%
12/28/2017	447.2	0.073	0.016%
12/29/2017	434.9	0.047	0.011%
12/30/2017	422.0	0.17	0.040%
12/31/2017	407.8	0.061	0.015%
1/1/2018	397.5	0.061	0.015%
1/2/2018	391.6	0.062	0.016%
1/3/2018	383.2	0.078	0.020%
1/4/2018	389.1	0.073	0.019%
1/5/2018	576.5	0.094	0.016%
1/6/2018	769.1	0.056	0.007%
1/7/2018	807.8	0.094	0.012%
1/8/2018	898.3	0.164	0.018%
1/9/2018	3296.0	0.245	0.007%
1/10/2018	6404.6	0.094	0.001%
1/11/2018	3858.2	0.079	0.002%
1/12/2018	2959.9	0.094	0.003%
1/13/2018	2578.6	0.079	0.003%
1/14/2018	2190.9	0.079	0.004%
1/15/2018	1867.7	0.109	0.006%
1/16/2018	2882.4	0.067	0.002%
1/17/2018	3502.8	0.05	0.001%
1/18/2018	3890.6	0.144	0.004%
1/19/2018	8401.5	0.196	0.002%
1/20/2018	8853.9	0.13	0.001%
1/21/2018	6378.7	0.168	0.003%
1/22/2018	20874.6	0.164	0.001%
1/23/2018	16092.2	0.101	0.001%
1/24/2018	11762.2	0.489	0.004%
1/25/2018	19775.9	0.379	0.002%
1/26/2018	18612.6	0.232	0.001%
1/27/2018	12990.1	0.164	0.001%
1/28/2018	10340.4	0.144	0.001%
1/29/2018	8789.3	0.094	0.001%
1/30/2018	7367.5	0.091	0.001%
1/31/2018	6184.8	0.087	0.001%
2/1/2018	5280.0	0.064	0.001%
2/2/2018	4543.3	0.067	0.001%
2/3/2018	4097.4	0.056	0.001%

2/4/2018	3716.1	0.088	0.002%
2/5/2018	3535.1	0.068	0.002%
2/6/2018	3140.9	0.057	0.002%
2/7/2018	2798.4	0.04	0.001%
2/8/2018	2449.4	0.049	0.002%
2/9/2018	2184.4	0.047	0.002%
2/10/2018	1997.0	0.046	0.002%
2/11/2018	1854.8	0.046	0.002%
2/12/2018	1738.5	0.054	0.003%
2/13/2018	1622.1	0.055	0.003%
2/14/2018	1499.4	0.042	0.003%
2/15/2018	1395.9	0.031	0.002%
2/16/2018	1305.5	0.049	0.004%
2/17/2018	1227.9	0.038	0.003%
2/18/2018	1215.0	0.046	0.004%
2/19/2018	1292.5	0.076	0.006%
2/20/2018	1240.8	0.113	0.009%
2/21/2018	1131.0	0.055	0.005%
2/22/2018	1105.1	0.06	0.005%
2/23/2018	1137.4	0.093	0.008%
2/24/2018	1079.3	0.064	0.006%
2/25/2018	1066.3	0.065	0.006%
2/26/2018	1376.6	0.07	0.005%
2/27/2018	1525.2	0.127	0.008%
2/28/2018	1376.6	0.071	0.005%
3/1/2018	4433.4	0.197	0.004%
3/2/2018	12666.9	0.196	0.002%
3/3/2018	9564.8	0.2	0.002%
3/4/2018	7561.4	0.122	0.002%
3/5/2018	6592.0	0.092	0.001%
3/6/2018	5564.4	0.068	0.001%
3/7/2018	4995.7	0.062	0.001%
3/8/2018	5473.9	0.076	0.001%
3/9/2018	6915.1	0.186	0.003%
3/10/2018	6785.9	0.103	0.002%
3/11/2018	5777.7	0.078	0.001%
3/12/2018	4898.7	0.07	0.001%
3/13/2018	5906.9	0.146	0.002%
3/14/2018	10405.0	0.16	0.002%
3/15/2018	10986.6	0.305	0.003%
3/16/2018	15252.0	0.389	0.003%
3/17/2018	15639.8	0.229	0.001%
3/18/2018	11309.8	0.139	0.001%
3/19/2018	8789.3	0.104	0.001%
3/20/2018	7238.2	0.084	0.001%
3/21/2018	6979.7	0.096	0.001%
3/22/2018	12085.3	0.0315	0.000%

3/23/2018	18095.6	0.237	0.001%
3/24/2018	18354.1	0.297	0.002%
3/25/2018	17126.2	0.308	0.002%
3/26/2018	14476.5	0.172	0.001%
3/27/2018	11439.0	0.112	0.001%
3/28/2018	9435.6	0.099	0.001%
3/29/2018	8143.0	0.074	0.001%
3/30/2018	7238.2	0.065	0.001%
3/31/2018	6417.5	0.056	0.001%
4/1/2018	5616.1	0.051	0.001%
4/2/2018	5040.9	0.047	0.001%
4/3/2018	4620.8	0.039	0.001%
4/4/2018	4123.2	0.04	0.001%
4/5/2018	3748.4	0.086	0.002%
4/6/2018	6003.9	0.262	0.004%
4/7/2018	52606.5	0.309	0.001%
4/8/2018	37483.8	0.146	0.000%
4/9/2018	19323.5	0.101	0.001%
4/10/2018	13248.6	0.095	0.001%
4/11/2018	10340.4	0.15	0.001%
4/12/2018	11309.8	0.15	0.001%
4/13/2018	10469.6	0.098	0.001%
4/14/2018	8272.3	0.079	0.001%
4/15/2018	7367.5	0.08	0.001%
4/16/2018	7755.3	0.071	0.001%
4/17/2018	7302.9	0.05	0.001%
4/18/2018	6365.8	0.05	0.001%
4/19/2018	5622.6	0.045	0.001%
4/20/2018	5079.7	0.041	0.001%
4/21/2018	4582.1	0.042	0.001%
4/22/2018	4142.6	0.048	0.001%
4/23/2018	3838.9	0.049	0.001%
4/24/2018	3489.9	0.04	0.001%
4/25/2018	3212.0	0.033	0.001%
4/26/2018	2979.3	0.03	0.001%
4/27/2018	2779.0	0.036	0.001%
4/28/2018	2759.6	0.092	0.003%
4/29/2018	2811.3	0.051	0.002%
4/30/2018	2695.0	0.039	0.001%
5/1/2018	2481.7	0.034	0.001%
5/2/2018	2313.7	0.045	0.002%
5/3/2018	2152.1	0.043	0.002%
5/4/2018	1997.0	0.044	0.002%
5/5/2018	1874.2	0.045	0.002%
5/6/2018	1770.8	0.045	0.003%
5/7/2018	1680.3	0.044	0.003%
5/8/2018	1596.3	0.042	0.003%

5/9/2018		0.043	
5/10/2018	1434.7	0.034	0.002%
5/11/2018	1363.6	0.045	0.003%
5/12/2018	1305.5	0.04	0.003%
5/13/2018	1247.3	0.43	0.034%
5/14/2018	1189.1	0.043	0.004%
5/15/2018	1137.4	0.04	0.004%
5/16/2018	1098.7	0.042	0.004%
5/17/2018	1092.2	0.041	0.004%
5/18/2018	1131.0	0.037	0.003%
5/19/2018	1085.7	0.044	0.004%
5/20/2018	1027.6	0.045	0.004%
5/21/2018	975.9	0.042	0.004%
5/22/2018	943.6	0.037	0.004%
5/23/2018	911.2	0.046	0.005%
5/24/2018	885.4	0.041	0.005%
5/25/2018	917.7	0.095	0.010%
5/26/2018	962.9	0.062	0.006%
5/27/2018	917.7	0.047	0.005%
5/28/2018	911.2	0.052	0.006%
5/29/2018	846.6	0.043	0.005%
5/30/2018	782.0	0.039	0.005%
5/31/2018	736.8	0.042	0.006%
6/1/2018	717.4	0.037	0.005%
6/2/2018	698.0	0.041	0.006%
6/3/2018	678.6	0.045	0.007%
6/4/2018	642.4	0.033	0.005%
6/5/2018	610.7	0.042	0.007%
6/6/2018	584.2	0.043	0.007%
6/7/2018	562.3	0.036	0.006%
6/8/2018	545.5	0.039	0.007%
6/9/2018	533.2	0.071	0.013%
6/10/2018	512.5	0.027	0.005%
6/11/2018	489.9	0.049	0.010%
6/12/2018	476.9	0.039	0.008%
6/13/2018	462.7	0.043	0.009%
6/14/2018	444.0	0.041	0.009%
6/15/2018	426.5	0.037	0.009%
6/16/2018	409.1	0.043	0.011%
6/17/2018	389.7	0.044	0.011%
6/18/2018	373.5	0.046	0.012%
6/19/2018	360.0	0.038	0.011%
6/20/2018	344.5	0.04	0.012%
6/21/2018	328.3	0.037	0.011%
6/22/2018	314.7	0.038	0.012%
6/23/2018	304.4	0.043	0.014%
6/24/2018	291.5	0.043	0.015%

6/25/2018	276.0	0.041	0.015%
6/26/2018	265.6	0.036	0.014%
6/27/2018	252.0	0.039	0.015%
6/28/2018	238.5	0.038	0.016%
6/29/2018	228.1	0.036	0.016%
6/30/2018	219.1	0.039	0.018%
7/1/2018	212.6	0.039	0.018%
7/2/2018	201.6	0.042	0.021%
7/3/2018	194.5	0.042	0.022%
7/4/2018	190.7	0.033	0.017%
7/5/2018	184.2	0.0385	0.021%
7/6/2018	176.4	0.036	0.020%
7/7/2018	170.6	0.036	0.021%
7/8/2018	167.4	0.04	0.024%
7/9/2018	164.2	0.037	0.023%
7/10/2018	158.3	0.042	0.027%
7/11/2018	156.4	0.043	0.027%
7/12/2018	153.8	0.038	0.025%
7/13/2018	149.3	0.036	0.024%
7/14/2018	144.1	0.037	0.026%
7/15/2018	140.9	0.045	0.032%
7/16/2018	137.0	0.053	0.039%
7/17/2018	131.2	0.044	0.034%
7/18/2018	127.3	0.039	0.031%
7/19/2018	122.8	0.046	0.037%
7/20/2018	118.9	0.035	0.029%
7/21/2018	114.4	0.039	0.034%
7/22/2018	110.5	0.042	0.038%
7/23/2018	107.3	0.043	0.040%
7/24/2018	103.4	0.043	0.042%
7/25/2018	100.2	0.037	0.037%
7/26/2018	98.2	0.041	0.042%
7/27/2018	95.6	0.034	0.036%
7/28/2018	93.1	0.04	0.043%
7/29/2018	91.1	0.038	0.042%
7/30/2018	89.8	0.041	0.046%
7/31/2018	87.9	0.048	0.055%
8/1/2018	87.2	0.039	0.045%
8/2/2018	85.3	0.039	0.046%
8/3/2018	85.3	0.037	0.043%
8/4/2018	83.4	0.039	0.047%
8/5/2018	82.1	0.041	0.050%
8/6/2018	80.8	0.043	0.053%
8/7/2018	78.8	0.047	0.060%
8/8/2018	77.6	0.04	0.052%
8/9/2018	76.9	0.046	0.060%
8/10/2018	76.3	0.042	0.055%

8/11/2018	75.0	0.038	0.051%
8/12/2018	74.3	0.037	0.050%
8/13/2018	73.0	0.043	0.059%
8/14/2018	71.7	0.043	0.060%
8/15/2018	71.1	0.035	0.049%
8/16/2018	69.8	0.039	0.056%
8/17/2018	69.2	0.033	0.048%
8/18/2018	67.9	0.038	0.056%
8/19/2018	65.9	0.039	0.059%
8/20/2018	62.3	0.041	0.066%
8/21/2018	60.9	0.043	0.071%
8/22/2018	59.5	0.036	0.061%
8/23/2018	57.6	0.045	0.078%
8/24/2018	56.7	0.038	0.067%
8/25/2018	55.5	0.037	0.067%
8/26/2018	54.6	0.031	0.057%
8/27/2018	54.0	0.045	0.083%
8/28/2018	52.7	0.042	0.080%
8/29/2018	51.5	0.034	0.066%
8/30/2018	50.2	0.039	0.078%
8/31/2018	49.2	0.046	0.094%
9/1/2018	48.2	0.04	0.083%
9/2/2018	48.0	0.039	0.081%
9/3/2018	47.8	0.048	0.100%
9/4/2018	46.5	0.042	0.090%
9/5/2018	45.4	0.04	0.088%
9/6/2018	44.2	0.044	0.100%
9/7/2018	43.3	0.043	0.099%
9/8/2018	42.8	0.047	0.110%
9/9/2018	42.1	0.047	0.112%
9/10/2018	40.8	0.041	0.101%
9/11/2018	39.7	0.046	0.116%
9/12/2018	38.5	0.042	0.109%
9/13/2018	37.8	0.043	0.114%
9/14/2018	36.8	0.038	0.103%
9/15/2018	35.9	0.039	0.109%
9/16/2018	36.4	0.042	0.115%
9/17/2018	36.0	0.044	0.122%
9/18/2018	34.6	0.038	0.110%
9/19/2018	33.9	0.04	0.118%
9/20/2018	33.1	0.053	0.160%
9/21/2018	33.5	0.03	0.089%
9/22/2018	34.8	0.045	0.129%
9/23/2018	33.3	0.042	0.126%
9/24/2018	32.8	0.037	0.113%
9/25/2018	33.1	0.031	0.094%
9/26/2018	32.7	0.04	0.122%

9/27/2018	31.9	0.04	0.125%
9/28/2018	31.9	0.038	0.119%
9/29/2018	34.3	0.043	0.125%
9/30/2018	38.6	0.049	0.127%
10/1/2018	39.4	0.041	0.104%
10/2/2018	40.8	0.038	0.093%
10/3/2018	42.4	0.041	0.097%
10/4/2018	42.3	0.034	0.080%
10/5/2018	48.6	0.037	0.076%
10/6/2018	51.5	0.047	0.091%
10/7/2018	50.0	0.045	0.090%
10/8/2018	51.1	0.04	0.078%
10/9/2018	53.6	0.032	0.060%
10/10/2018	54.9	0.042	0.076%
10/11/2018	53.6	0.043	0.080%
10/12/2018	51.3	0.039	0.076%
10/13/2018	50.7	0.04	0.079%
10/14/2018	49.8	0.043	0.086%
10/15/2018	48.7	0.043	0.088%
10/16/2018	47.2	0.037	0.078%
10/17/2018	46.3	0.038	0.082%
10/18/2018	45.5	0.036	0.079%
10/19/2018	45.2	0.038	0.084%
10/20/2018	46.0	0.041	0.089%
10/21/2018	45.4	0.04	0.088%
10/22/2018	45.4	0.045	0.099%
10/23/2018	46.6	0.033	0.071%
10/24/2018	46.1	0.042	0.091%
10/25/2018	46.9	0.039	0.083%
10/26/2018	46.6	0.043	0.092%
10/27/2018		0.046	
10/28/2018	47.2	0.061	0.129%
10/29/2018	49.1	0.037	0.075%
10/30/2018	48.9	0.036	0.074%
10/31/2018	48.2	0.036	0.075%
11/1/2018	47.8	0.036	0.075%
11/2/2018	47.2	0.036	0.076%
11/3/2018	47.3	0.04	0.085%
11/4/2018	47.4	0.049	0.103%
11/5/2018	47.8	0.052	0.109%
11/6/2018	49.6	0.043	0.087%
11/7/2018	49.0	0.046	0.094%
11/8/2018	48.0	0.056	0.117%
11/9/2018	47.1	0.042	0.089%
11/10/2018	46.1	0.039	0.085%
11/11/2018	45.6	0.041	0.090%
11/12/2018	46.7	0.04	0.086%

11/13/2018	46.4	0.041	0.088%
11/14/2018	46.5	0.046	0.099%
11/15/2018	45.0	0.038	0.084%
11/16/2018	43.9	0.041	0.093%
11/17/2018	44.5	0.039	0.088%
11/18/2018	44.5	0.048	0.108%
11/19/2018	44.4	0.04	0.090%
11/20/2018	44.1	0.038	0.086%
11/21/2018	51.6	0.034	0.066%
11/22/2018	65.3	0.098	0.150%
11/23/2018	165.4	0.08	0.048%
11/24/2018	1292.5	0.187	0.014%
11/25/2018	2520.5	0.08	0.003%
11/26/2018	1092.2	0.054	0.005%
11/27/2018	730.3	0.048	0.007%
11/28/2018	1945.3	0.132	0.007%
11/29/2018	3683.8	0.109	0.003%
11/30/2018	5144.3	0.168	0.003%



Photo 1. Agricultural fields within the proposed land application area. Note grazed pasture. Photo taken looking west on April 9, 2018.



Photo 2. Agricultural fields within the proposed land application area. Note grazed pasture. Photo taken April 9, 2018.



Photo 3. Existing wastewater discharge pipe outfall location, looking east. Note wetland conditions, and canary reed-grass within the channel. Photo taken April 9, 2018.



Photo 4. Agricultural fields near existing wastewater discharge pipe outfall location looking southwest. Note grazed pasture within the vicinity of the outfall pipe. Photo taken April 9, 2018.