



STATE WATER RESOURCES
CONTROL BOARD

2008 DEC 23 AM 10:13

Property Reserve, Inc.
5 Triad Center, Suite 850
Salt Lake City, Utah 84180-1127

TR/GFW
6587
8338

Dec. 19, 2009

DIV OF WATER RIGHTS
SACRAMENTO

Greg Wilson, P.E.
Water Resource Engineer
State Water Resources Control Board
Division of Water Rights
1001 I Street, 14th Floor
Sacramento, California 95814

Dear Greg,

Enclosed you will find a check in the amount of \$6,742.20. According to your recent letter to me, this is the additional fee required to process applications #6587 and #8338.

The cropping patterns you requested will be coming from Monique or Ken Loy.

It is my understanding that there will be no additional rate of diversion at either intake location. We are transferring use of water from our farm to the Contra Costa County water system. There is potential that the rate of intake will actually be less.

Let me know if you require anything else to begin processing our application.

Sincerely,

Richard Wangsgard
Property Manager

Rec'd
\$6,742.20
12/23/08
MS



STATE WATER RESOURCES
CONTROL BOARD

Property Reserve, Inc.
5 Trad Center, Suite 650
Salt Lake City, Utah 84180-1127

2008 DEC 23 AM 10:13

DIV. OF WATER RIGHTS
SACRAMENTO

December 19, 2008

Mr. Greg Wilson, P.E.
Water Resource Control Engineer
State Water Resources Control Board
Division of Water Rights
P.O. Box 2000
Sacramento CA 95812

Dear Mr. Wilson:

The following information is in response to your requests in your letter dated December 12, 2008 to Rich Wangsgard regarding "Property Reserve California, Inc.'s (PRC) Petition to Authorize the Transfer of Water to the Contra Costa Water District".

HISTORICAL CROPPING PATTERNS, 2002-2008

The attached tables provide a detailed list of the historic crop types by field for Byron Ranch. The attached map shows the parcel identification number and locations on the Byron Ranch property.

PRC plans to reduce diversions from Old River to their property by 12,494 af. Deliveries will be reduced on the PRC property through fallowing of approximately 2,000 acres. These lands will be used for spring grazing but will not be irrigated. Deliveries will continue in 2009 for irrigation of approximately 1,000 acres of alfalfa that will be kept in production. About 186 acres of the land to be fallowed was alfalfa in 2008. The remaining land to be fallowed was either wheat hay, grass hay, and/or corn, irrigated pasture or unirrigated pasture in 2008.

The evapotranspiration of applied water (ETAW) factors used for each crop type group, to determine the reduction in consumptive use due to fallowing, were obtained from the DWR California Land and Water Use website. The most recent ETAW values available in 2007, when most calculations were conducted, were 2002 ETAW values. Therefore, based on precipitation pattern similarities, ETAW factors for 2003, 2004, 2005, 2006, 2007, and 2008 were based on 2002, 2000, 2001, 2000, 1999, and 1999 values, respectively.

The ETAW factor used for each crop type in each year is shown in the table below.

Crop Types	ETAW Weighted Average ^(a) (acre foot per acre)			
	1999	2000	2001	2002
Alfalfa (including new, 2-year, and old)	3.8	3.88	4.1	4.18
Grain (including orchard grass, wheat hay, rye grass, sorghum silage, wheat, rye, and oats)	0.7	0.8	0.9	0.8
Sugar Beets	3.0	3.1	1.7	1.9
Corn	1.96	2.0	2.13	2.12
Other Field Crops (including Sudan grass, giant Bermuda, timothy hay, clover hay, and forage mix)	2.13	1.99	2.49	2.25
Pasture (including irrigated pasture, pasture grass mix, and fescue/rye)	3.7	3.8	4.1	4.1

(a) Source: DWR California Land and Water Use website:
<http://www.landwateruse.water.ca.gov/docs/annualdata/>

HISTORICAL DIVERSIONS, 2002-2008

The diversions shown in the table below have been made for PRC farming operations between 2002 and 2008. These diversion quantities were (or will be) reported to the State Board on the License Summary Reports for License #1605 and License #4953 and are based on applied water calculations. The applied water unit factors are obtained annually from the DWR California Land and Water Use website for the various crops grown on Byron Ranch each year.

Year	Estimated Diversion Quantity, acre-feet
2002	18,790
2003	16,520
2004	16,350
2005	16,510
2006	18,800
2007	16,475
2008	19,400

Mr. Greg Wilson, P.E.
December 19, 2008
Page 3

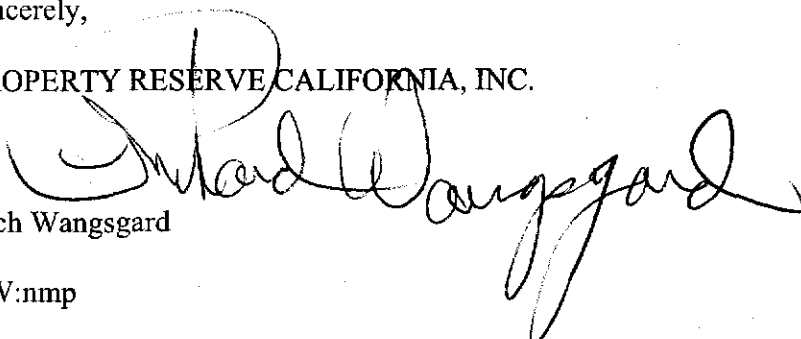
DIVERSION CHANGES AT OLD RIVER AND ROCK SLOUGH

It is expected that the proposed transfer will be diverted for direct delivery to CCWD's customers in lieu of CCWD's CVP supplies. Thus the proposed transfer will not increase the diversion rates or amounts at CCWD's Old River or Rock Slough Intakes. Also, the proposed transfer will reduce overall diversions in Old River during periods when the State and Federal water projects are likely to be subject to reverse flow restrictions in Old and Middle Rivers. CCWD's diversions will remain unchanged during this period, as the transferred water will be taken in lieu of CCWD's CVP supplies. Diversions by Byron Ranch will decrease due to the fallowing program and the reduction in consumptive use. The net impact of the transfer will be a reduction in diversions from Old River.

If CCWD's CVP allocation is cut significantly, it is possible that some or all of the transfer water will be diverted in addition to CCWD's CVP supplies. This would mean that CCWD's diversion rates could increase by a maximum of 29.6 cfs, assuming no other sources of supply were available and severe mandatory rationing for CCWD's customers was implemented. However, any increase in diversion rate due to the proposed transfer would be offset by a decrease in the Byron Ranch diversion rate so that the net effect would be a decrease in diversions from Old River, as described above. In no case would CCWD's diversions increase beyond the rates or amounts allowed by D1629, or beyond the rates or amounts that CCWD has diverted in recent years.

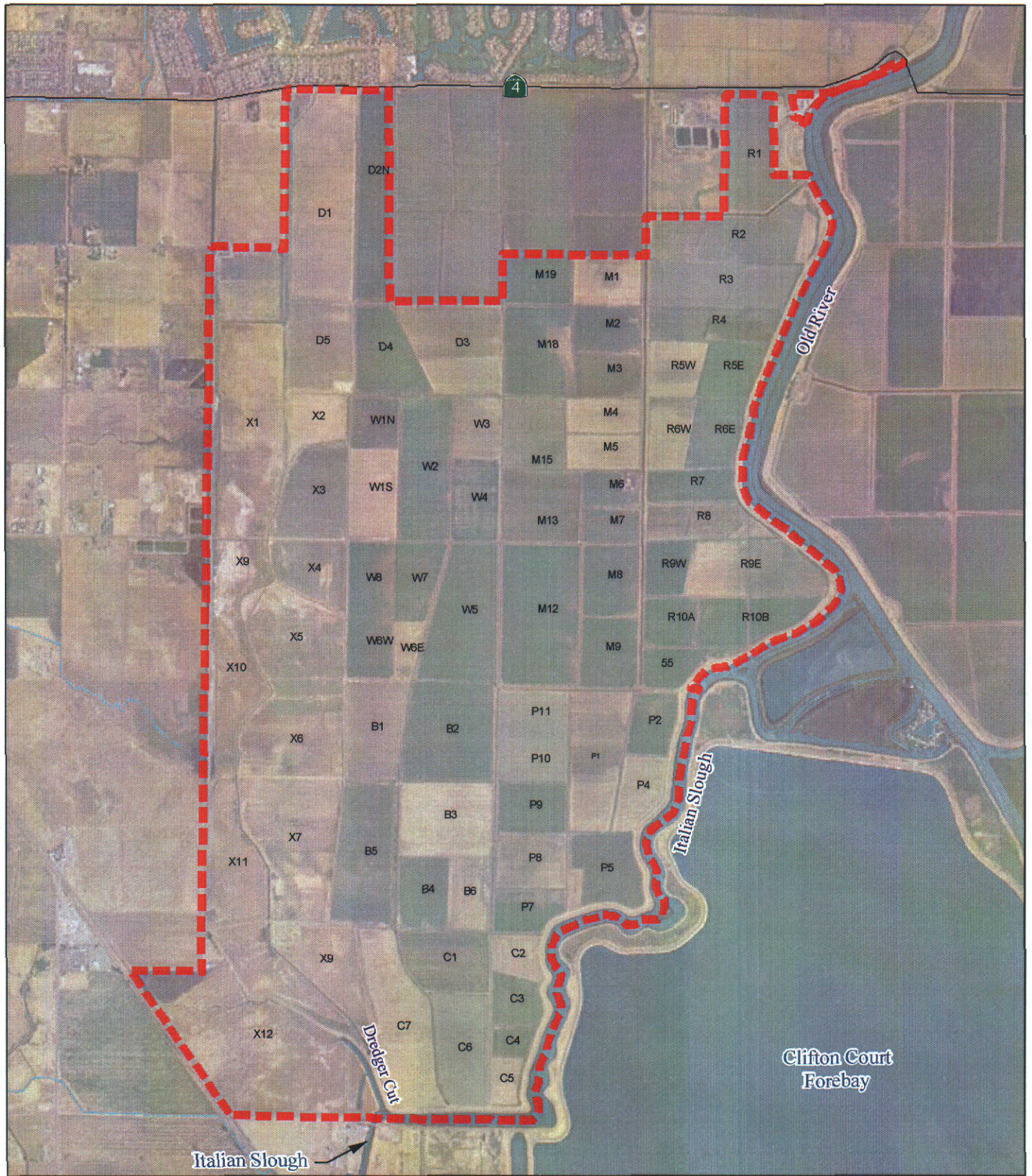
Sincerely,

PROPERTY RESERVE CALIFORNIA, INC.

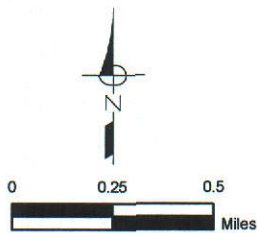

Rich Wangsgard

RW:nmp

attachments



LEGEND:
 Byron Ranch Boundary



**Property Reserve California
 Byron Ranch**

PARCEL ID MAP

2002 - 2008 Crops and Acreage by Field Parcel

2008		
Parcel #	Acreage	Crop
D-1	93.7	Alfalfa
D-2N	43	Alfalfa
D-2S	10	Alfalfa
D-3	59.2	Alfalfa
D-4	36.9	Alfalfa
D-5	45.5	Grass Hay Variety
M-1	25.1	Grass Hay Variety
M-2	23.9	Alfalfa
M-3	23.6	Grass Hay Variety
M-4	21.2	Grass Hay Variety
M-5	21.4	Grass Hay Variety
M-6	16.8	Grass Hay Variety
M-7	16.6	Grass Hay Variety
M-8	33.2	Grass Hay Variety
M-9	31.6	Alfalfa
M-12	86.1	Alfalfa
M-13	22.5	Grass Hay Variety
M-15	55.6	Grass Hay Variety
M-18	48.9	Wheat hay to Corn Double Crop
M-19	24.2	Wheat hay to Corn Double Crop
R-1	44	Grass Hay Variety
R-2	57.4	Grass Hay Variety
R-3	48.6	Grass Hay Variety
R-4	31	Grass Hay Variety
R-5w	24	Grass Hay Variety
R-5e	24.3	Grass Hay Variety
R-6w	24.5	Grass Hay Variety
R-6e	24.8	Grass Hay Variety
R-7	22.1	Grass Hay Variety
R-8	33.6	Alfalfa
R-9w	24	Alfalfa
R-9e	48	Grass Hay Variety
R-10a	24	Alfalfa
R-10b	50	Wheat hay to Corn Double Crop
W-1N	17	Alfalfa
W-1S	32.4	Grass Hay Variety
W-2	53.7	Alfalfa
W-3	22.4	Grass Hay Variety
W-4	29.1	Alfalfa
W-5	75.3	Alfalfa
W-6w	21.8	Alfalfa
W-6e	12.3	Grass Hay Variety
W-7	23.8	Alfalfa
W-8	25.1	Alfalfa
B-1	44.8	Alfalfa
B-2	62.2	Alfalfa
B-3	52.1	Grass Hay Variety
B-4	30.5	Grass Hay Variety

2008		
Parcel #	Acreage	Crop
B-5	63.5	Grass Hay Variety
B-6	18	Grass Hay Variety
C-1	37.5	Grass Hay Variety
C-2	17	Grass Hay Variety
C-3	18.5	Grass Hay Variety
C-4	12.1	Grass Hay Variety
C-5	9.6	Grass Hay Variety
C-6	45.7	Alfalfa
C-7	72	Alfalfa
X-1	108.9	Pasture
X-2	24.5	Pasture
X-3	44.7	Pasture
X-4	31.5	Pasture
X-5	51	Pasture
X-6	66.7	Pasture
X-7	77	Pasture
X-8	40	Pasture
X-9	34.9	Pasture
X-10	59.2	Pasture
X-11	42.6	Pasture
X-12	157.6	Pasture
P-1	58	Alfalfa
P-2	22	Alfalfa
P-4	23.3	Alfalfa
P-5	41.4	Alfalfa
P-7	21.7	Alfalfa
P-8	31.2	Alfalfa
P-9	26.2	Alfalfa
P-10	20	Grass Hay Variety
P-11	26.2	Alfalfa

2007		
Parcel #	Acreage	Crop
D-1	93.7	New Alfalfa
D-2N	43	Old Alfalfa
D-2S	10	Sudan/wheat
D-3	59.2	New Alfalfa
D-4	36.9	Sudan/wheat
D-5	43.5	Pasture Grass Mix
M-1	25.1	Pasture Grass Mix
M-2	23.9	Orchard Grass
M-3	23.6	Orchard Grass
M-4	21.2	Sorghum Silage/Wheat Hay
M-5	21.4	Sorghum Silage/Wheat Hay
M-6	16.8	Pasture Grass Mix
M-7	16.6	Pasture Grass Mix
M-8	33.2	Orchard Grass
M-9	31.6	Old Alfalfa
M-12	86.1	2-yr Alfalfa
M-13	22.5	Orchard Grass
M-15	55.6	Orchard Grass
M-18	48.9	Sudan/wheat
M-19	24.2	Sudan/wheat
R-1	43	Orchard Grass
R-2	58.9	Orchard Grass
R-3	50	Orchard Grass
R-4	31	Orchard Grass
R-5w	24	Sorghum Silage/Wheat Hay
R-5e	24.3	Orchard Grass
R-6w	24.5	Sorghum Silage/Wheat Hay
R-6e	24.8	Orchard Grass
R-7	25	Orchard Grass
R-8	30.6	New Alfalfa
R-9w	24	Old Alfalfa
R-9e	48	Pasture Grass Mix
R-10a	24	Old Alfalfa
R-10b	50	Sorghum Silage/Wheat Hay
W-1N	17	2-yr Alfalfa
W-1S	32.4	Pasture Grass Mix
W-2	53.7	Old Alfalfa
W-3	22.4	Pasture Grass Mix
W-4	29.1	Sudan/wheat
W-5	75.3	2-yr Alfalfa
W-6w	21.8	2-yr Alfalfa
W-6e	12.3	Rye Grass
W-7	23.8	2-yr Alfalfa
W-8	25.1	2-yr Alfalfa
B-1	44.8	New Alfalfa
B-2	62.2	Old Alfalfa
B-3	52.1	Pasture Grass Mix
B-4	30.5	Pasture Grass Mix
B-5	63.5	Giant Bermuda
B-6	18	Rye Grass

2007		
Parcel #	Acreage	Crop
C-1	37.5	Pasture Grass Mix
C-2	17	Rye Grass
C-3	18.5	Pasture Grass Mix
C-4	11.6	Orchard Grass
C-5	9.6	Rye Grass
C-6	45.7	New Alfalfa
C-7	72	Pasture Grass Mix
X-1	108.9	Irrigated Pasture
X-2	24.5	Irrigated Pasture
X-3	44.7	Irrigated Pasture
X-4	31.5	Irrigated Pasture
X-5	51	Irrigated Pasture
X-6	66.7	Irrigated Pasture
X-7	77	Irrigated Pasture
X-8	40	Irrigated Pasture
X-9	34.9	Pasture
X-10	59.2	Pasture
X-11	42.6	Pasture
X-12	157.6	Pasture
P-1	58	New Alfalfa
P-2	22	2-yr Alfalfa
P-4	23.3	New Alfalfa
P-5	41.4	Sudan/wheat
P-7	21.7	2-yr Alfalfa
P-8	31.2	New Alfalfa
P-9	26.2	Old Alfalfa
P-10	20	Orchard Grass
P-11	26.2	New Alfalfa
Baldwin	73	Rye Grass

2006 Parcel #	Acreage	Crop
D-1	93.7	Wheat hay
D-2	53	Old Alfalfa
D-3	59.2	Sudan/wheat
D-4	36.9	Old Alfalfa
D-5	43.5	Fescue/Rye/Wheat Hay
M-1	25.1	Fescue/Rye/Wheat Hay
M-2	23.9	Old Alfalfa
M-3	23.6	Orchard Grass
M-4	21.2	Sorghum Silage/Wheat Hay
M-5	21.4	Sorghum Silage/Wheat Hay
M-6	16.8	Orchard Grass
M-7	16.6	Orchard Grass
M-8	33.2	Orchard Grass
M-9	31.6	Old Alfalfa
M-12	86.1	New Alfalfa
M-13	22.5	Orchard Grass
M-15	55.6	Orchard Grass
M-18	48.9	Old Alfalfa
M-19	24.2	Old Alfalfa
R-1	43	Orchard Grass
R-2	58.9	Orchard Grass
R-3a	23.6	Orchard Grass
R-3b	25	Orchard Grass
R-4	31	Orchard Grass
R-5a	24	Sorghum Silage/Wheat Hay
R-5b	24.3	Orchard Grass
R-6a	24.5	Sorghum Silage/Wheat Hay
R-6b	24.8	Orchard Grass
R-7	25	Fescue/Rye/Wheat Hay
R-8	30.6	Sudan/wheat
R-9a	24	Old Alfalfa
R-9b	24.4	Rye Grass
R-9c	24	Orchard Grass
R-10	74	Old Alfalfa
W-1a	17	New Alfalfa
W-1b	32.4	Wheat hay
W-2	53.7	Old Alfalfa
W-3	22.4	Fescue/Rye/Wheat Hay
W-4	29.1	Old Alfalfa
W-5	75.3	New Alfalfa
W-6A	21.8	New Alfalfa
W-6B	12.3	Rye Grass
W-7	23.8	New Alfalfa
W-8	25.1	New Alfalfa
B-1	44.8	Sudan/wheat
B-2	62.2	Old Alfalfa
B-3	52.1	Wheat hay
B-4	24	Orchard Grass
B-5	63.5	Giant Bermuda
B-6	24.5	Rye Grass

2006		
Parcel #	Acreage	Crop
C-1	37.5	Fescue/Rye/Wheat Hay
C-2	17	Rye Grass
C-3	18.5	Orchard Grass
C-4	11.6	Orchard Grass
C-5	9.6	Rye Grass
C-6	45.7	Orchard Grass
C-7	72	Wheat hay
X-1	102.1	Irrigated Pasture
X-2	17.74	Irrigated Pasture
X-3	37.9	Irrigated Pasture
X-4	24.7	Irrigated Pasture
X-5	51	Irrigated Pasture
X-6	59.9	Irrigated Pasture
X-7	70.2	Irrigated Pasture
X-8	33.2	Irrigated Pasture
X-9	34.9	Pasture
X-10	59.2	Pasture
X-11	42.6	Pasture
X-12	157.6	Pasture
P-1	58	Sorghum Silage/Wheat Hay
P-2	22	New Alfalfa
P-4	23.3	Sorghum Silage/Wheat Hay
P-5	41.4	Old Alfalfa
P-7	21.7	New Alfalfa
P-8	31.2	Sorghum Silage/Wheat Hay
P-9	26.2	Old Alfalfa
P-10	20	Orchard Grass
P-11	26.2	Orchard Grass

2005		
Parcel #	Acreage	Crop
D-1a	40	Old Alfalfa
D-1b	60.2	Old Alfalfa
D-2	54	Old Alfalfa
D-3	61.8	Old Alfalfa
D-4	38.4	Old Alfalfa
D-5	45.6	Wheat
M-1	16.4	Corn Silage/Wheat
M-2	23.8	Old Alfalfa
M-3	23.1	Old Alfalfa
M-4	19.1	Corn Silage/Wheat
M-5	19.4	Corn Silage/Wheat
M-6	15.5	Orchard
M-7	16.6	Orchard
M-8	34	Old Alfalfa
M-9	32.5	Old Alfalfa
M-12	86.4	Orchard
M-13	21.9	Old Alfalfa
M-15	52.3	Old Alfalfa
M-18	47.8	Old Alfalfa
M-19	25.8	Old Alfalfa
R-1	39.8	Orchard
R-2a	21	Corn Silage/Wheat
R-2b	38	Orchard
R-3a	25	Orchard
R-3b	25	Old Alfalfa
R-4	32.5	Orchard
R-5a	23	Oats/Corn Silage
R-5b	23.4	Orchard
R-6a	25	Oats/Corn Silage
R-6b	25	Orchard
R-7	25	Old Alfalfa
R-8	26	Oats/Corn Silage
R-9a	25	Old Alfalfa
R-9b	25	Rye
R-9c	24	Orchard
R-10	70	Old Alfalfa
W-1	52.5	Sudan/wheat
W-2	53.2	Old Alfalfa
W-3	20	Sudan/wheat
W-4	30.2	Old Alfalfa
W-5	70.4	Sudan/wheat
W-6A	21.4	Wheat
W-6B	20.2	Rye
W-7	21.5	Wheat
W-8	19	Wheat
B-1	43.5	Old Alfalfa
B-2	63.2	Old Alfalfa
B-3	46.9	Wheat
B-4	26	Orchard
B-5	60	Wheat

2005		
Parcel #	Acreage	Crop
B-6	26.2	Rye
C-1	38	Sudan/wheat
C-2	12.7	Rye
C-3	21.4	Orchard
C-4	9.6	Orchard
C-5	9	Rye
C-6	42.6	Old Alfalfa
C-7	70	Wheat
X-1	102.1	Irrigated Pasture
X-2	17.74	Irrigated Pasture
X-3	37.9	Irrigated Pasture
X-4	24.7	Irrigated Pasture
X-5	51	Irrigated Pasture
X-6	59.9	Irrigated Pasture
X-7	70.2	Irrigated Pasture
X-8	33.2	Irrigated Pasture
X-9	34.9	Pasture
X-10	59.2	Pasture
X-11	42.6	Pasture
X-12	157.6	Pasture
P-1	50.3	Old Alfalfa
P-2	20.6	Old Alfalfa
P-4	22	Old Alfalfa
P-5	40.1	Old Alfalfa
P-7	20.6	Corn Silage/Wheat
P-8	30	Old Alfalfa
P-9	25.6	Old Alfalfa
P-10	20	Old Alfalfa
P-11	26.2	Orchard

2004		
Parcel #	Acreage	Crop
D-1	102.2	Old Alfalfa
D-2	54	Old Alfalfa
D-3	61.8	Old Alfalfa
D-4	38.4	New Alfalfa
D-5	20	Wheat/Orchard
D-6	25.6	Wheat/Rye
M-1	16.4	Orchard
M-2	23.8	New Alfalfa
M-3	23.1	New Alfalfa
M-4	19.1	Wheat/Rye
M-5	19.4	Wheat/Rye
M-6	15.5	Orchard
M-7	16.6	Orchard
M-8	34	New Alfalfa
M-9	32.5	New Alfalfa
M-12	86.4	Wheat/Orchard
M-13	21.9	Old Alfalfa
M-15	52.3	Alfalfa/Orchard Mix
M-18	47.8	Old Alfalfa
M-19	25.8	Old Alfalfa
R-1a	24.8	Orchard
R-1b	15	Orchard
R-2	59	Alfalfa/Orchard Mix
R-3a	25	Orchard
R-3b	25	Old Alfalfa
R-4	32.5	Orchard
R-5	46.4	Orchard
R-6	50	Orchard
R-7	25	Old Alfalfa
R-8	26	Orchard
R-9a	25	Old Alfalfa
R-9b	25	Wheat/Rye
R-9c	24	Orchard
R-10	70	Old Alfalfa
W-1	52.5	Wheat/Rye
W-2	53.2	New Alfalfa
W-3	20	Wheat/Rye
W-4	30.2	New Alfalfa
W-5	70.4	Old Alfalfa
W-6A	21.4	Wheat/Rye
W-6B	20.2	Wheat/Rye
W-7	21.5	Wheat/Rye
W-8	19	Wheat/Rye
B-1	43.5	New Alfalfa
B-2	63.2	Wheat/Rye
B-3	46.9	Wheat/Rye
B-4	26	Orchard
B-5	60	Wheat/Rye
B-6	26.2	Wheat/Rye
C-1	38	Wheat/Rye

2004		
Parcel #	Acreage	Crop
C-2	12.7	Wheat/Rye
C-3	21.4	Orchard
C-4	9.6	Orchard
C-5	9	Wheat/Rye
C-6	42.6	Alfalfa/Orchard Mix
C-7	70	Wheat/Rye
C-8	20	Wheat/Orchard
X-1	102.1	Irrigated Pasture
X-2	17.74	Irrigated Pasture
X-3	37.9	Irrigated Pasture
X-4	24.7	Irrigated Pasture
X-5	51	Irrigated Pasture
X-6	59.9	Irrigated Pasture
X-7	70.2	Irrigated Pasture
X-8	33.2	Irrigated Pasture
X-9	34.9	Pasture
X-10	59.2	Pasture
X-11	42.6	Pasture
X-12	157.6	Pasture
P-1	50.3	Old Alfalfa
P-2	20.6	Old Alfalfa
P-4	22	Old Alfalfa
P-5	40.1	Old Alfalfa
P-7	20.6	Old Alfalfa
P-8	30	Old Alfalfa
P-9	25.6	Old Alfalfa
P-10	20	Alfalfa/Orchard Mix
P-11	26.2	Wheat/Orchard

2003 Parcel #	Acreage	Crop
D-1	102.2	Old Alfalfa
D-2	54	Old Alfalfa
D-3	61.8	New Alfalfa
D-4	38.4	Old Alfalfa
D-5	45.6	Wheat Hay
M-1	16.4	Wheat Hay
M-2	23.8	Rye/Orchard Mix
M-3	23.1	Rye/Orchard Mix
M-4	19.1	Rye/Orchard Mix
M-5	19.4	Rye/Orchard Mix
M-6	15.5	Rye/Orchard Mix
M-7	16.6	Rye/Orchard Mix
M-8	34	Rye/Orchard Mix
M-9	32.5	Rye/Orchard Mix
M-12	86.4	Old Alfalfa
M-13	43.1	New Alfalfa
M-15	31.1	Old Alfalfa
M-18	47.8	New Alfalfa
M-19	25.8	New Alfalfa
R-1a	24.8	Rye/Orchard Mix
R-1b	15	Alfalfa/Orchard Mix
R-2	59	Wheat Hay
R-3a	25	Rye/Orchard Mix
R-3b	25	Old Alfalfa
R-4	32.5	Alfalfa/Orchard Mix
R-5a	21.4	Wheat Hay
R-5b	25	Alfalfa/Orchard Mix
R-6	50	Wheat Hay
R-7	25	Old Alfalfa
R-8	26	Rye/Orchard Mix
R-9a	25	Old Alfalfa
R-9b	25	Wheat Hay
R-9c	24	Wheat Hay
R-10	70	Old Alfalfa
W-1	52.5	Wheat Hay
W-2	53.2	Old Alfalfa
W-3	20	Wheat Hay
W-4	30.2	Wheat Hay
W-5	70.4	Old Alfalfa
W-6A	21.4	Wheat Hay
W-6B	20.2	Wheat Hay
W-7	21.5	Wheat Hay
W-8	19	Wheat Hay
B-1	43.5	Old Alfalfa
B-2	63.2	Wheat Hay
B-3	46.9	Wheat Hay
B-4	52.3	Wheat Hay
B-5	60	Wheat Hay
C-1	38	Wheat Hay
C-2	12.7	Wheat Hay

2003		
Parcel #	Acreage	Crop
C-3	21.4	Rye/Orchard Mix
C-4	9.6	Wheat Hay
C-5	9	Wheat Hay
C-6	42.6	Old Alfalfa
C-7	70	Wheat Hay
X-1	102.1	Irrigated Pasture
X-2	17.74	Irrigated Pasture
X-3	37.9	Irrigated Pasture
X-4	24.7	Irrigated Pasture
X-5	51	Irrigated Pasture
X-6	59.9	Irrigated Pasture
X-7	70.2	Irrigated Pasture
X-8	33.2	Irrigated Pasture
X-9	34.9	Pasture
X-10	59.2	Pasture
X-11	42.6	Pasture
X-12	157.6	Pasture
P-1	50.3	New Alfalfa
P-2	20.6	New Alfalfa
P-4	22	Old Alfalfa
P-5	40.1	Old Alfalfa
P-7	20.6	Old Alfalfa
P-8	30	Old Alfalfa
P-9	25.6	Old Alfalfa
P-10	20	Old Alfalfa
P-11	26.2	Old Alfalfa

2002		
Parcel #	Acreage	Crop
D-1	102.2	Old Alfalfa
D-2	54	New Alfalfa
D-3	61.8	Oats/Rye Grass
D-4	38.4	Old Alfalfa
D-5	45.6	Rye/Orchard Mix
M-1	16.4	Rye/Orchard Mix
M-2	23.8	Alfalfa/Orchard Mix
M-3	23.1	Alfalfa/Orchard Mix
M-4	19.1	Rye/Orchard Mix
M-5	19.4	Rye/Orchard Mix
M-6	15.5	Rye/Orchard Mix
M-7	16.6	Rye/Orchard Mix
M-8	17	Old Alfalfa
M-9	17	Old Alfalfa
M-10	16	Old Alfalfa
M-11	16.5	Old Alfalfa
M-12	86.4	Old Alfalfa
M-13	21.9	Oats/Rye Grass
M-14	21.2	Oats/Rye Grass
M-15	31.1	New Alfalfa
M-17	24.5	Rye/Orchard Mix
M-18	23.3	Rye/Orchard Mix
M-19	25.8	Rye/Orchard Mix
R-1a	24.8	Forage Mix/Rye Grass
R-1b	15	Old Alfalfa
R-2	59	Forage Mix/Rye Grass
R-3a	25	Rye/Orchard Mix
R-3b	25	Old Alfalfa
R-4	32.5	Alfalfa/Orchard Mix
R-5a	21.4	Forage Mix/Rye Grass
R-5b	25	Alfalfa/Orchard Mix
R-6	50	Forage Mix/Rye Grass
R-7	25	New Alfalfa
R-8	26	Forage Mix/Rye Grass
R-9a	25	New Alfalfa
R-9b	25	Forage Mix/Rye Grass
R-9c	24	Forage Mix/Rye Grass
R-10	70	New Alfalfa
W-1	52.5	Rye/Orchard Mix
W-2	53.2	Old Alfalfa
W-3	20	Rye/Orchard Mix
W-4	30.2	Old Alfalfa
W-5	70.4	New Alfalfa
W-6A	21.4	Rye/Orchard Mix
W-6B	20.2	Rye/Orchard Mix
W-7	21.5	Rye/Orchard Mix
W-8	19	Rye/Orchard Mix
B-1	43.5	Old Alfalfa
B-2	63.2	Old Alfalfa
B-3	46.9	Rye/Orchard Mix

2002		
Parcel #	Acreage	Crop
B-4	52.3	Rye/Orchard Mix
B-5	60	Rye/Orchard Mix
C-1	38	Rye/Orchard Mix
C-2	12.7	Forage Mix/Rye Grass
C-3	21.4	Timothy Hay
C-4	9.6	Forage Mix
C-5	9	Forage Mix
C-6	42.6	Old Alfalfa
C-7	70	Rye/Orchard Mix
X-1	102.1	Irrigated Pasture
X-2	17.74	Irrigated Pasture
X-3	37.9	Irrigated Pasture
X-4	24.7	Irrigated Pasture
X-5	51	Irrigated Pasture
X-6	59.9	Irrigated Pasture
X-7	70.2	Irrigated Pasture
X-8	33.2	Irrigated Pasture
X-9	34.9	Pasture
X-10	59.2	Pasture
X-11	42.6	Pasture
X-12	157.6	Pasture
P-1	29.7	Old Alfalfa
P-2	20.6	Old Alfalfa
P-3	20.6	Old Alfalfa
P-4	22	Old Alfalfa
P-5	40.1	Old Alfalfa
P-7	20.6	Old Alfalfa
P-8	30	Old Alfalfa
P-9	25.6	Old Alfalfa
P-10	20	Old Alfalfa
P-11	26.2	Old Alfalfa