

Attachment D

PCWA POD's & POU

PCWA's Middle Fork American River Project



PCWA's Middle Fork Project seasonally stores and releases water to meet consumptive water demand and generate power for California's electric grid

Rediversion for consumptive purposes currently occurs at two locations - American River Pump Station and Folsom Dam

Middle Fork Project Facts and Figures

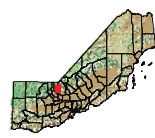
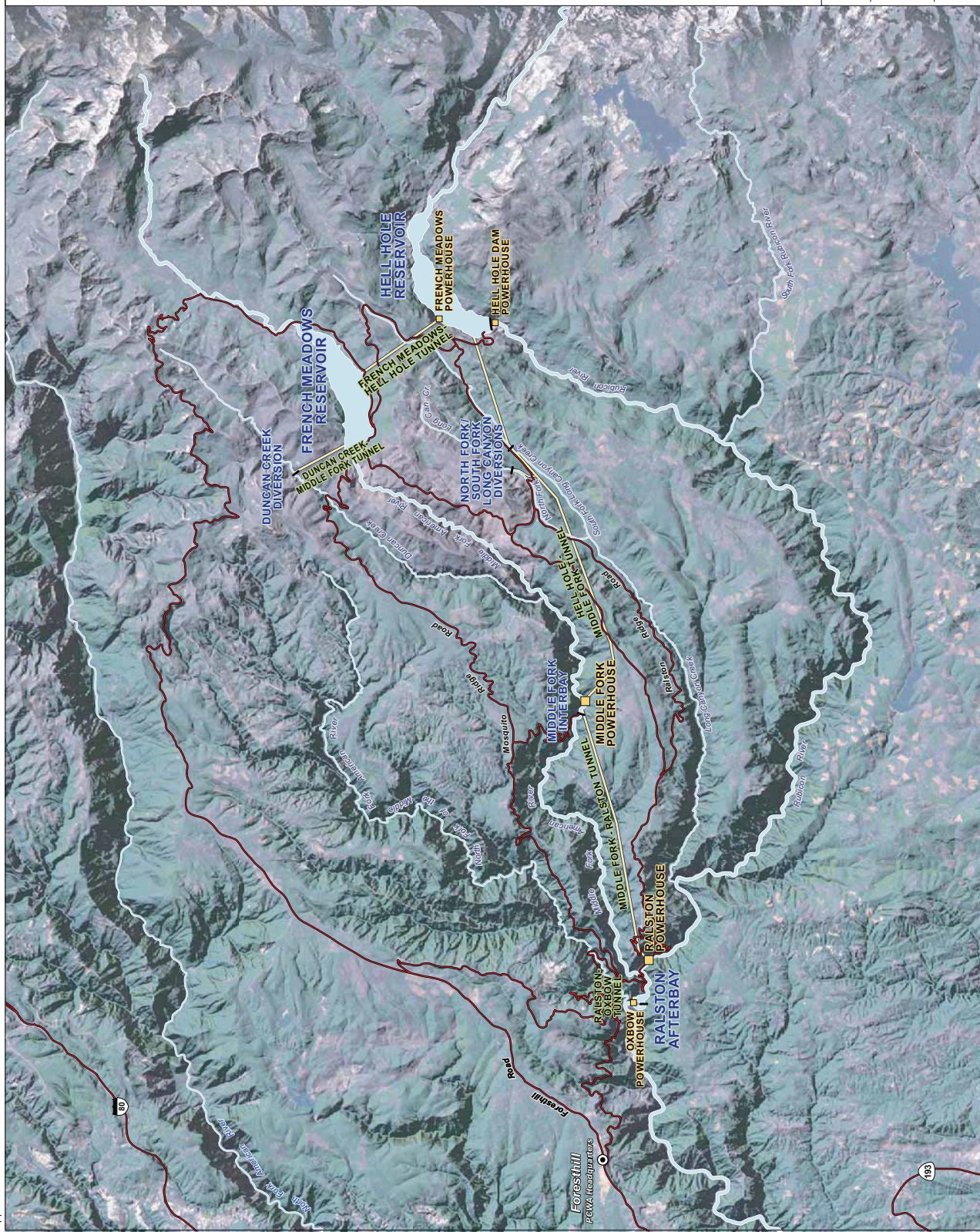
PROJECT SUMMARY

Project Completed: 1967
 Total Capacity: 233.7 MW
 Annual Energy Production: 1,039,078 MWh
 Average Annual Energy Production: 345,560 acre-feet (af)
 Total Gross Water Storage: 11,900,000 cubic yards
 Earth and Rock-fill Dams: 94,000 cubic yards
 Concrete Dams and Divisions: 23.2 miles
 Tunnels and Penstocks:

RESERVOIRS AND DIVERSIONS	Elevation	Storage Capacity
Duncan Creek Diversion	5,285'	20 af
French Meadows Reservoir	4,634.5'	134,893 af
French Meadows Reservoir	4,634.5'	207,593 af
North Fork Long Canyon Diversion	4,716'	0.39 af
South Fork Long Canyon Diversion	4,640'	0.83 af
Middle Fork Interbay	2,529'	175 af
Ralston Afterbay	1,179'	2,782 af

POWERHOUSES	Capacity	Production
French Meadows Powerhouse	4,650'	15.3 MW
Hell Hole Powerhouse	4,240'	27.3 MW
Ralston Powerhouse	1,175'	95.2 MW
Oxbow Powerhouse	1,069'	6.1 MW

TUNNELS	Capacity	Discharge
Duncan Creek-Middle Fork Tunnel	-	400 cfs
French Meadows-Hell Hole Tunnel	-	400 cfs
Hell Hole-Middle Fork Tunnel	-	920 cfs
Middle Fork-Ralston Tunnel	-	836 cfs
Ralston-Oxbow Tunnel	-	1,066 cfs




Placer County Water Agency
 Middle Fork American River Project
Map 3-1
 Middle Fork Project and Vicinity



Project Facilities


- ▲ Powerhouse
- Dam
- - - - Tunnel
- Penstock
- Transportation**
- Road
- Hydrography**
- Watercourse
- Water Body
- Middle Fork American River Watershed

*Modified from Calwater Ver. 2.2 to represent drainage above high-water mark of Folsom Lake

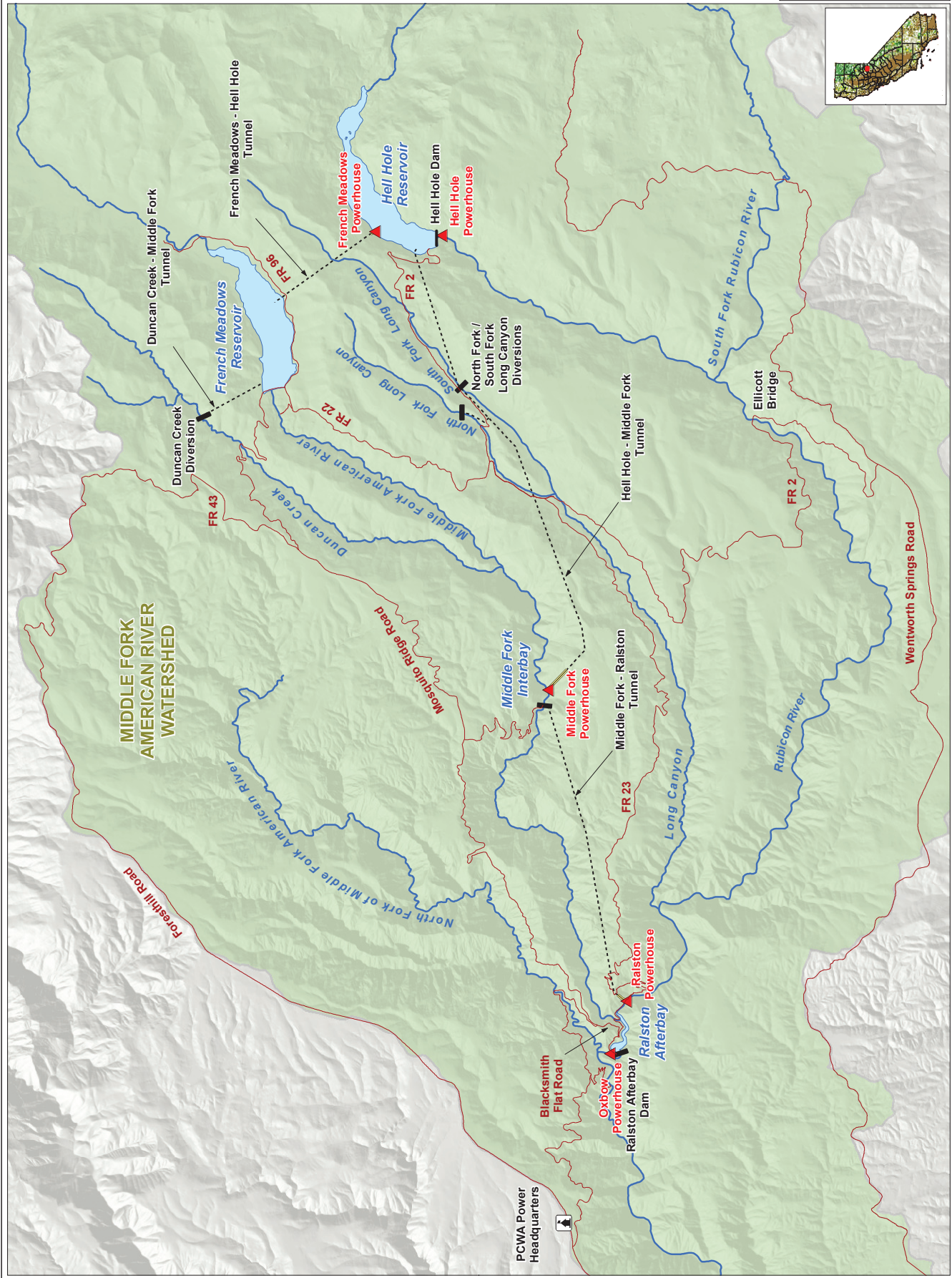


Placer County Water Agency
Middle Fork American River Project

Map 1-1
Middle Fork American River Project and Vicinity



Projection: CA State Plane, Zone 2
Datum: NAD 83



**PCWA'S Place of Use
Under Water Right Permits 13856 and 13858**

