



EDMUND G. BROWN JR.
GOVERNOR



MATTHEW RODRIGUEZ
SECRETARY FOR
ENVIRONMENTAL PROTECTION

State Water Resources Control Board

NOTICE OF DETERMINATION
Pursuant to Section 21108 or 21152
Public Resources Code

TO: Office of Planning and Research
P.O. Box 3044
Sacramento, CA 95812-3044

FROM: State Water Resources Control Board
DIVISION OF WATER RIGHTS
P.O. Box 2000
SACRAMENTO, CA 95812-2000

Project Title: LONG TERM CHANGE IN PLACE OF USE – SWP TABLE A WATER FROM TULARE LAKE BASIN WATER STORAGE DISTRICT AND EMPIRE WEST SIDE IRRIGATION DISTRICT TO WESTLANDS WATER DISTRICT		
State Clearinghouse Number	Lead Agency Contact Person	Area Code/Telephone/Extension
2009121084	Mark Gilkey Tulare Lake Basin Water Storage District	559-992-4127

Project Location (see attached map):

This project is located in Fresno and Kings County. Water would be transferred from the Tulare Lake Basin Water Storage District (Tulare) and Empire West Side Irrigation District (Empire) service areas to the Westlands Water District (Westlands) service areas as shown on the attached map, *Long Term Change in Place of Use, SWP Table A Water from Tulare Lake Basin Water Storage District and Empire West Side Irrigation District to Westlands Water District under State Water Right Permit 16482, Application 17512.*

Project Description:

State Water Project (SWP) water is stored in San Luis Reservoir under the provisions of Permit 16482 (Application 17512) and held for use in the service areas of SWP contractors including Tulare and Empire. Newton Farms and Hansen Ranches/Vista Verde Farms are farming interests that hold lands in both Tulare and Westlands. Newton Farms and Brooks Farms are farming interests that hold lands in both Empire and Westlands. These farming interests have requested that a total of up to 10,000 acre-feet per year of SWP water currently scheduled for use on their lands in Tulare or Empire (8,000 af from Tulare and 2,000 af from Empire) be transferred for use on their lands located within Westlands. The proposed long-term change in place of use would be in effect from April 1, 2012 through April 30, 2027.

Tulare is the California Environmental Quality Act (CEQA) lead agency for this project. On December 29, 2009, Tulare issued an Initial Study and Negative Declaration (NegDec) pursuant to the provisions of CEQA (State Clearinghouse Number 2009121084). Tulare adopted the

CHARLES R. HOPPIN, CHAIRMAN | THOMAS HOWARD, EXECUTIVE DIRECTOR

NegDec on February 2, 2010.

This is to advise that on November 21, 2011, the State Water Board, Division of Water Rights [Lead Agency Responsible Agency], after considering the Negative Declaration, approved the above-described project and has made the following determinations regarding the above-described project:

1. The project [will will not] have a significant effect on the environment.
2. An Environmental Impact Report was prepared for this project.
 A Negative Declaration was prepared for this project pursuant to the provisions of CEQA.
3. Mitigation measures [were were not] made a condition of the approval of the project.
4. A statement of Overriding Considerations [was was not] adopted for this project.
5. Findings [were were not] made pursuant to the provisions of CEQA.

This is to certify that the State Water Board has been advised that the Negative Declaration is available to the General Public at:

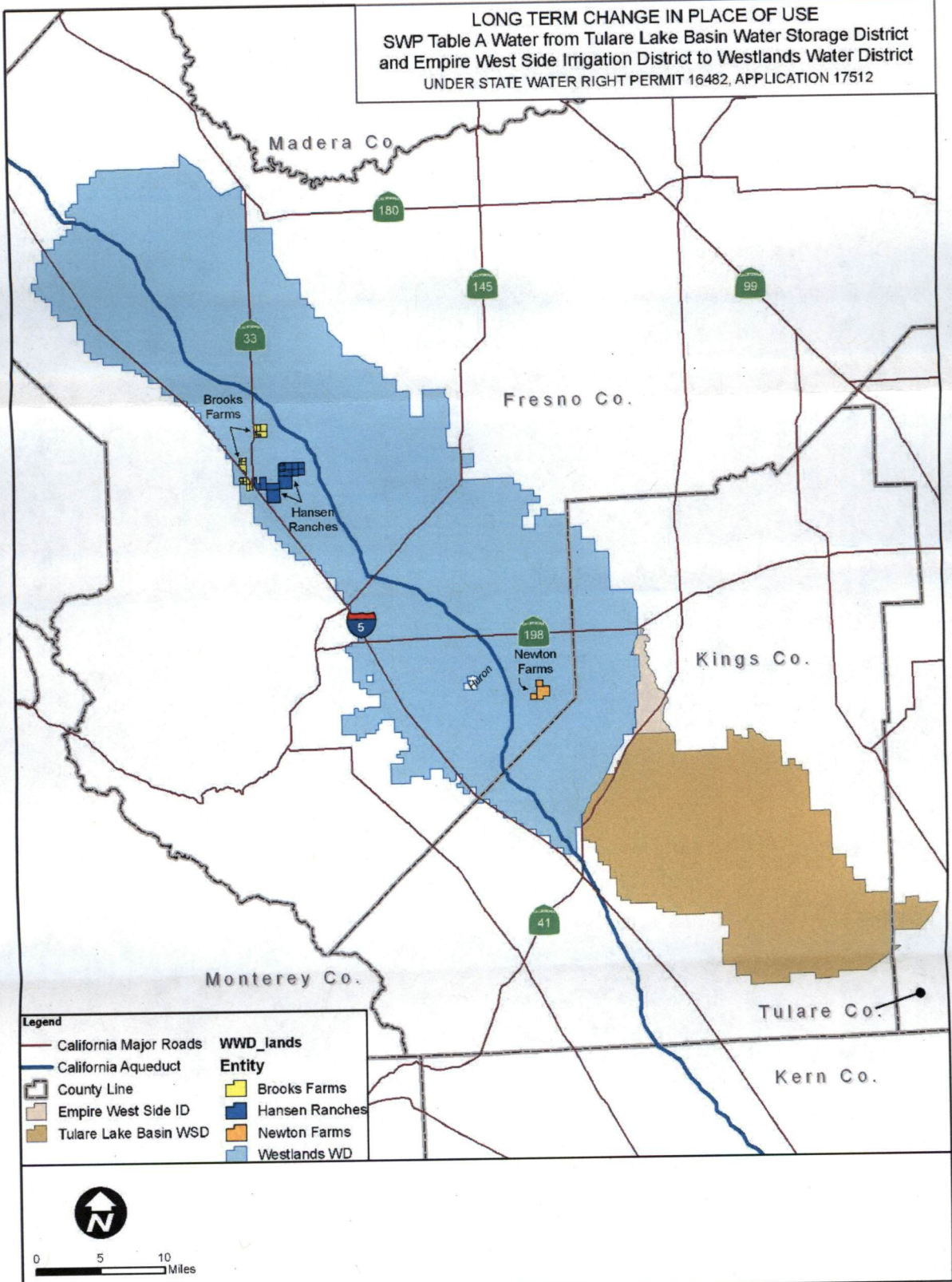
Tulare Lake Basin Water Storage District
1001 Chase Avenue
Corcoran, CA 93212

M v
Barbara L. Evoy

Nov. 21, 2011
Date

Deputy Director
Title

LONG TERM CHANGE IN PLACE OF USE
 SWP Table A Water from Tulare Lake Basin Water Storage District
 and Empire West Side Irrigation District to Westlands Water District
 UNDER STATE WATER RIGHT PERMIT 16482, APPLICATION 17512



- Legend**
- California Major Roads
 - California Aqueduct
 - County Line
 - Empire West Side ID
 - Tulare Lake Basin WSD
 - WWD_lands
 - Entity
 - Brooks Farms
 - Hansen Ranches
 - Newton Farms
 - Westlands WD

