

Y:\BiologicalAssess\_ESA\_Sect7\_Permitting\ENV126\_15\_SpeciesDistribution\_2016.mxd 20160301 [sib] [Doc No: GIS-00204]

- City
- Legal Delta Boundary
- Swainson's Hawk**
- Species Occurrence
- Modeled Foraging Habitat
- Modeled Nesting Habitat
- Project Area
- bdcpl\_eireis.SDE.i12\_BD...
- Permanent Transmission Lines
- Temporary Transmission Lines

\*\* Temporary work areas may be restored after construction is complete, however, for the purposes of impact analysis, the effect is considered permanent

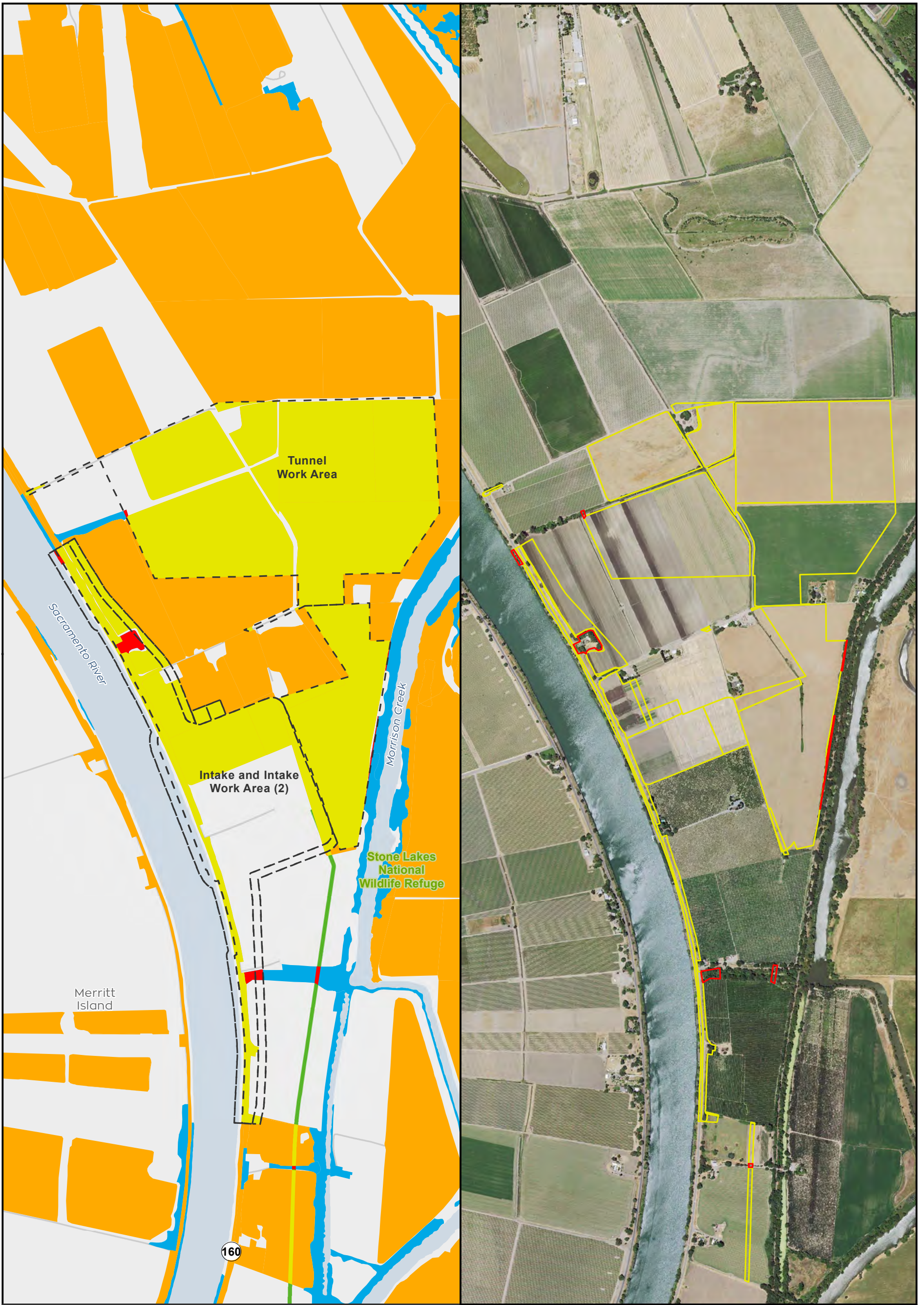
Sources: CCO Conveyance, CA WaterFix 2015; Species Occurrences, ICF 2013; Modeled Habitat, ICF 2013, ICF 2015; Critical Habitat, USFWS 2012



**Impacts to Swainson's Hawk Modeled Habitat from Water Conveyance Facility Modified Pipeline Tunnel/Clifton Court Forebay Option Overview**

**DRAFT**

Y:\BiologicalAssess\_ESA\_Sect7\_Permitting\EN\126\_15\_SpeciesDistribution\_2pane\_201601.mxd\_2016301 [clsb] [Doc No: GIS-00204]



- City
- Major roads
- State and Interstate Highways
- Delta Island
- Swainson's Hawk**
  - Modeled Foraging Habitat
  - Impacted Modeled Foraging Habitat
  - Modeled Nesting Habitat
  - Impacted Modeled Nesting Habitat
- Project
  - Permanent Transmission
  - Temporary Transmission Lines

N 0 1,200 Feet  
 \*\* Temporary work areas may be restored after construction is complete, however, for the purposes of impact analysis, the effect is considered permanent.

\*\* The location of the transmission lines have not been finalized. Transmission structures will be constructed to have the least impact to the surrounding habitats.



Sources: CCO Conveyance, CA WaterFix 2015; Species Occurrences, ICF 2013; Modeled Habitat, ICF 2013, ICF 2015; NAIP 2014

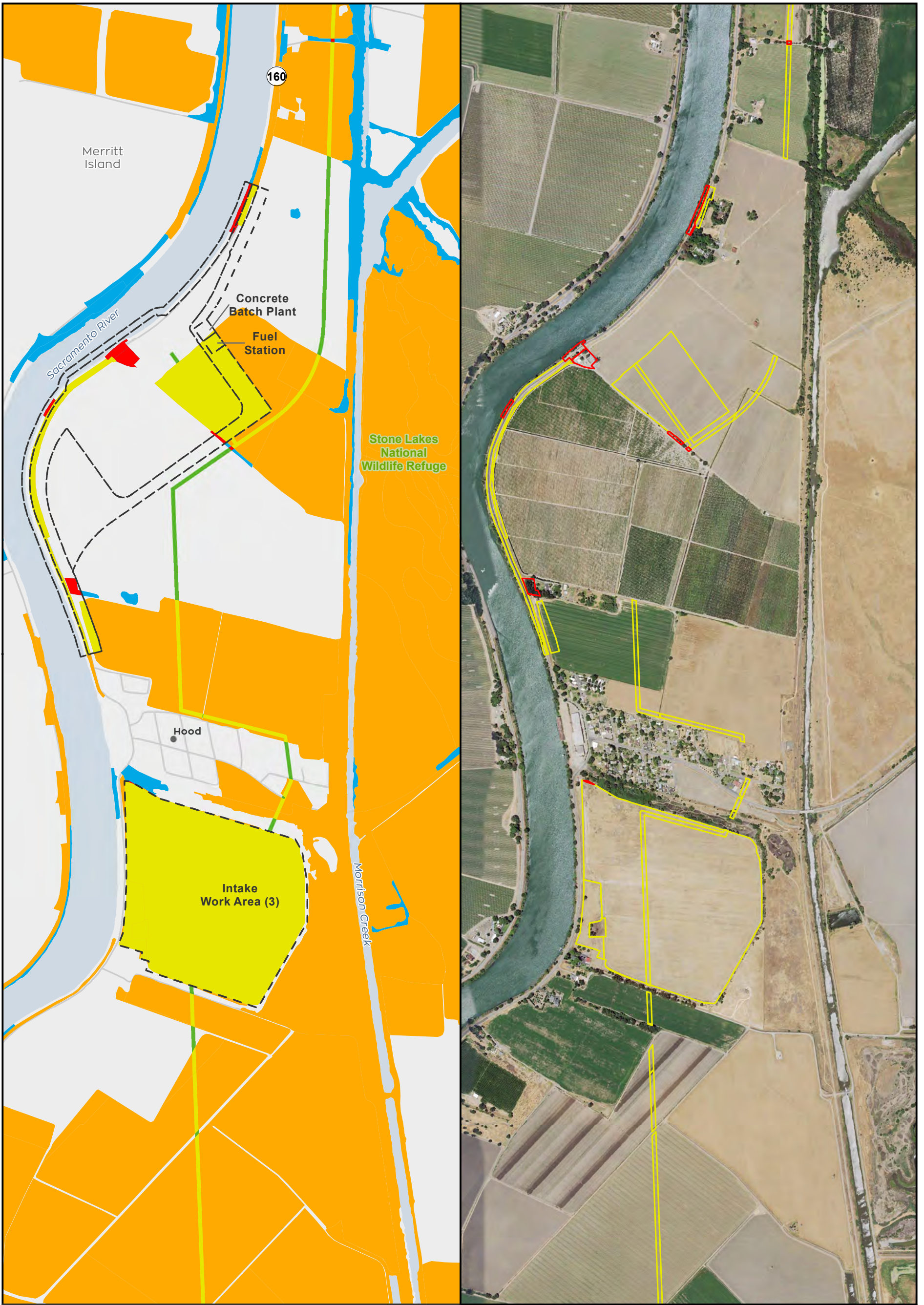
**Impacts to Swainson's Hawk Modeled Habitat from Water Conveyance Facility Construction  
 Modified Pipeline Tunnel/Clifton Court Forebay Option  
 Intake 2**

**Figure 4.7-2 of 4.7-38**

**DRAFT**



Y:\Biological\Assess\_ESA\_Sect7\_Permitting\EN\126\_15\_SpeciesDistribution\_2pane\_201601.mxd 2016301 [c:\sb] [Doc No: GIS-00204]



- City
  - Major roads
  - State and Interstate Highways
  - Delta Island
- Swainson's Hawk**
- Modeled Foraging Habitat
  - Impacted Modeled Foraging Habitat
  - Modeled Nesting Habitat
  - Impacted Modeled Nesting Habitat
- Project**
- Permanent Transmission
  - Temporary Transmission Lines

0 1,200 Feet

\*\* Temporary work areas may be restored after construction is complete, however, for the purposes of impact analysis, the effect is considered permanent.

\*\* The location of the transmission lines have not been finalized. Transmission structures will be constructed to have the least impact to the surrounding habitats.



Sources: CCO Conveyance, CA WaterFix 2015; Species Occurrences, ICF 2013; Modeled Habitat, ICF 2013, ICF 2015; NAIP 2014

**Impacts to Swainson's Hawk Modeled Habitat from Water Conveyance Facility Construction Modified Pipeline Tunnel/Clifton Court Forebay Option Intake 3**

**Figure 4.7-3 of 4.7-38**



**DRAFT**

Y:\BiologicalAssess\_ESA\_Sect7\_Permitting\EN\126\_15\_SpeciesDistribution\_2pane\_201601.mxd 2016301 [cistb] [Doc No: GIS-00204]



- City
  - Major roads
  - State and Interstate Highways
  - Delta Island
- Swainson's Hawk**
- Modeled Foraging Habitat
  - Impacted Modeled Foraging Habitat
  - Modeled Nesting Habitat
  - Impacted Modeled Nesting Habitat
- Project**
- Permanent Transmission
  - Temporary Transmission Lines

N 0 1,200 Feet

\*\* Temporary work areas may be restored after construction is complete, however, for the purposes of impact analysis, the effect is considered permanent.

\*\* The location of the transmission lines have not been finalized. Transmission structures will be constructed to have the least impact to the surrounding habitats.



Sources: CCO Conveyance, CA WaterFix 2015; Species Occurrences, ICF 2013; Modeled Habitat, ICF 2013, ICF 2015; NAIP 2014

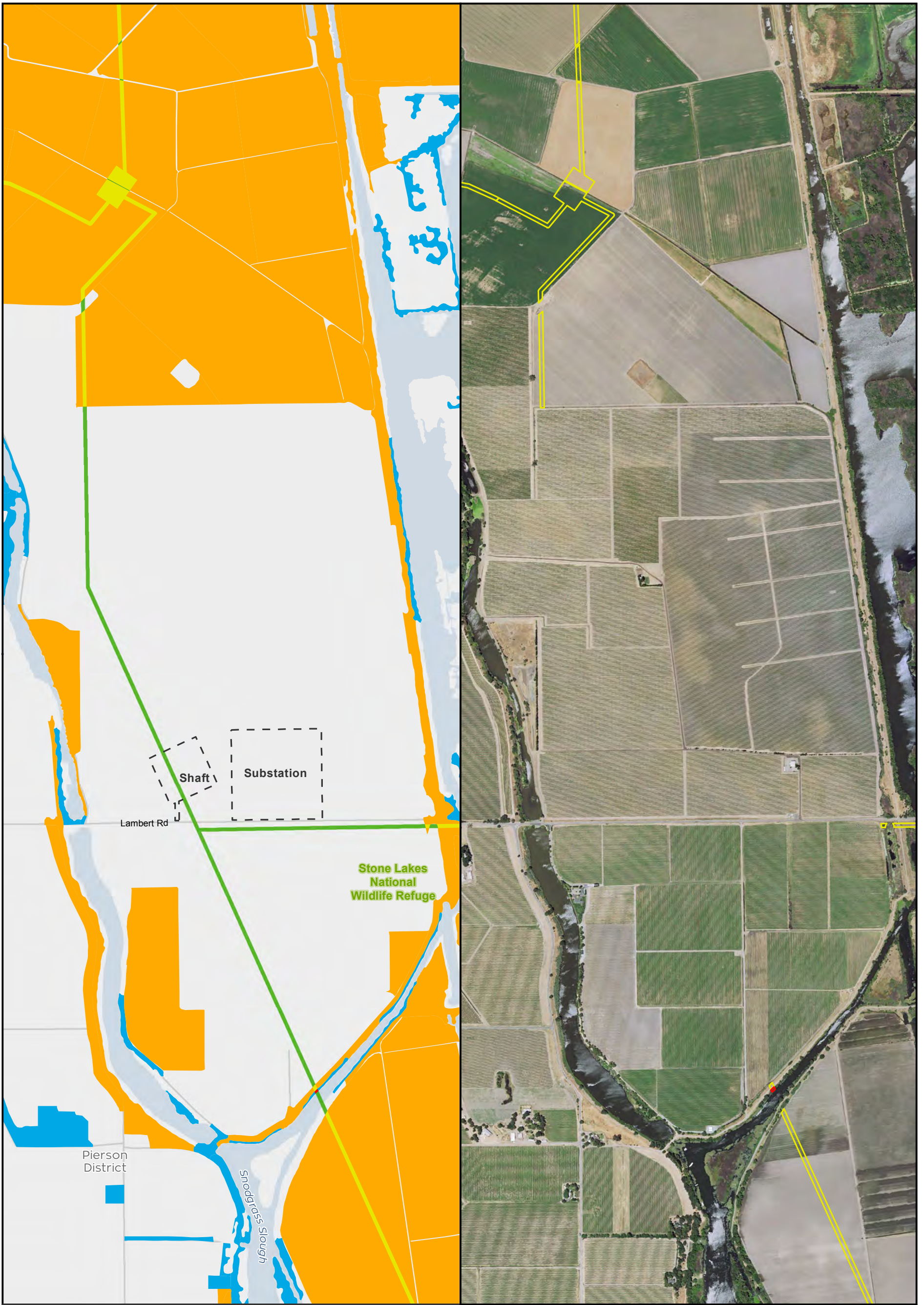


**Impacts to Swainson's Hawk Modeled Habitat from Water Conveyance Facility Construction  
Modified Pipeline Tunnel/Clifton Court Forebay Option  
Intake 5**

**Figure 4.7-4 of 4.7-38**

**DRAFT**

Y:\Biological\Assess\_ESA\_Sect7\_Permitting\EN\126\_15\_SpeciesDistribution\_2pane\_201601.mxd 2016301 [clsb] [Doc No: GIS-00204]



- City
  - Major roads
  - State and Interstate Highways
  - Delta Island
- Swainson's Hawk**
- Modeled Foraging Habitat
  - Impacted Modeled Foraging Habitat
  - Modeled Nesting Habitat
  - Impacted Modeled Nesting Habitat
- Project**
- Permanent Transmission
  - Temporary Transmission Lines

N 0 1,200 Feet

\*\* Temporary work areas may be restored after construction is complete, however, for the purposes of impact analysis, the effect is considered permanent.

\*\* The location of the transmission lines have not been finalized. Transmission structures will be constructed to have the least impact to the surrounding habitats.



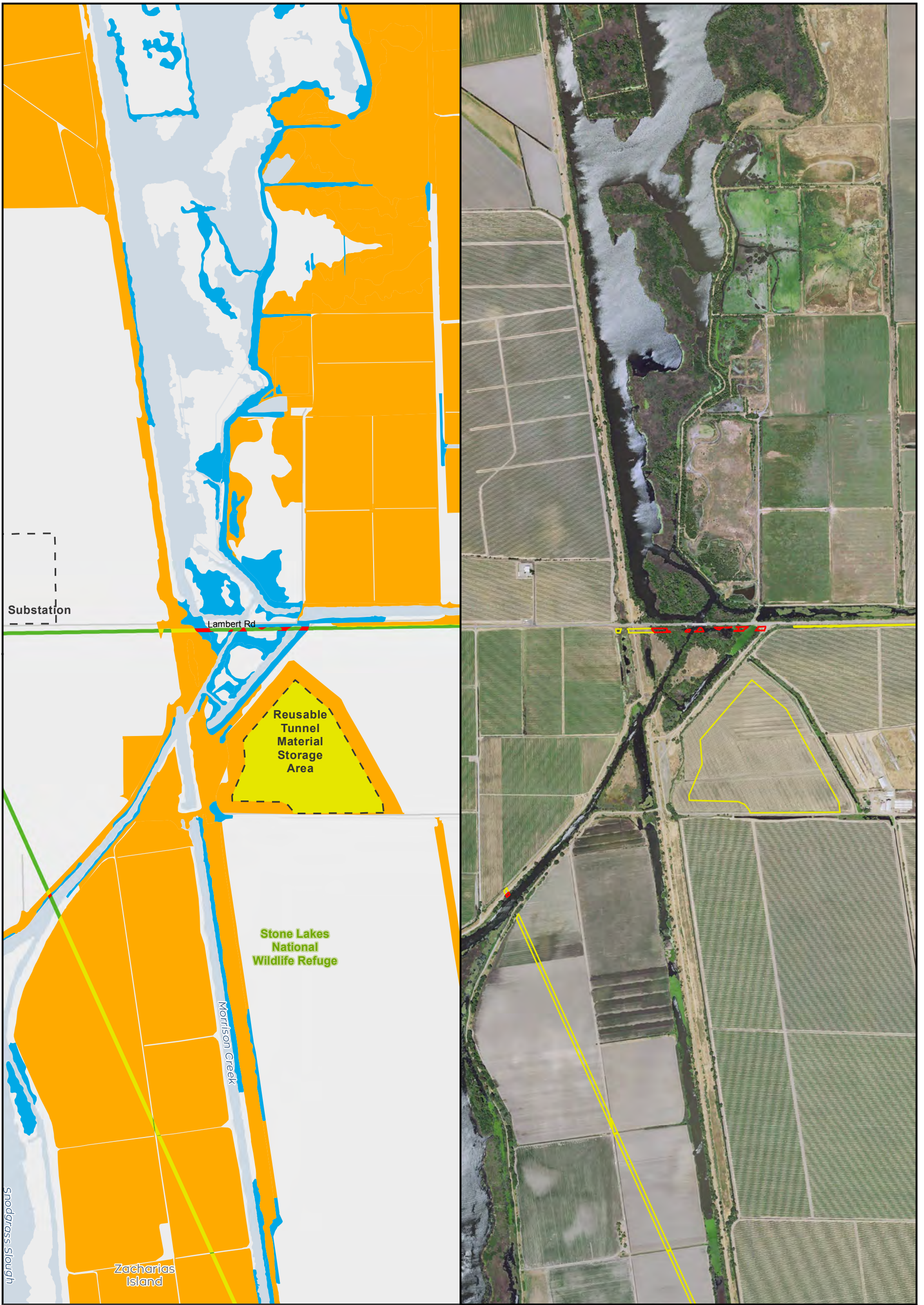
Sources: CCO Conveyance, CA WaterFix 2015; Species Occurrences, ICF 2013; Modeled Habitat, ICF 2013, ICF 2015; NAIP 2014



**Impacts to Swainson's Hawk Modeled Habitat from Water Conveyance Facility Construction Modified Pipeline Tunnel/Clifton Court Forebay Option Transmission Line - Electrical Substation Figure 4.7-5 of 4.7-38**

**DRAFT**

Y:\Biological\Assess\_ESA\_Sect7\_Permitting\ENV\126\_15\_SpeciesDistribution\_2pane\_201601.mxd 2016301 [clsb] [Doc No: GIS-00204]



- City
- Major roads
- State and Interstate Highways
- Delta Island
- Swainson's Hawk**
- Modeled Foraging Habitat
- Impacted Modeled Foraging Habitat
- Modeled Nesting Habitat
- Impacted Modeled Nesting Habitat
- Project
- Permanent Transmission
- Temporary Transmission Lines

0 1,200 Feet

\*\* Temporary work areas may be restored after construction is complete, however, for the purposes of impact analysis, the effect is considered permanent.

\*\* The location of the transmission lines have not been finalized. Transmission structures will be constructed to have the least impact to the surrounding habitats.



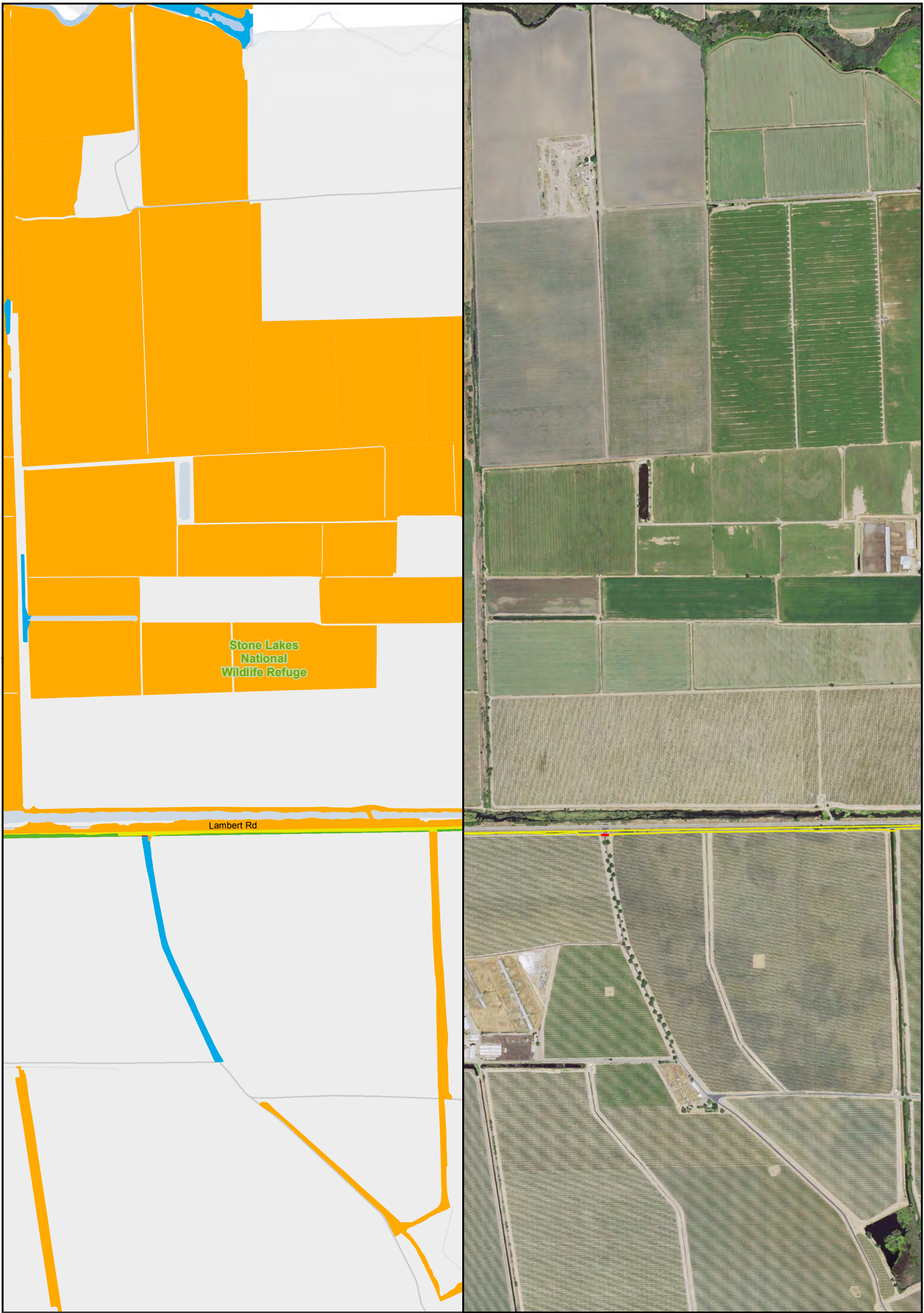
Sources: CCO Conveyance, CA WaterFix 2015; Species Occurrences, ICF 2013; Modeled Habitat, ICF 2013, ICF 2015; NAIP 2014



**Impacts to Swainson's Hawk Modeled Habitat from Water Conveyance Facility Construction Modified Pipeline Tunnel/Clifton Court Forebay Option Transmission Line - Intermediate Forebay Figure 4.7-6 of 4.7-38**

**DRAFT**

Y:\BiologicalAssess\_ESA\_Sect7\_Permitting\EN\126\_15\_SpeciesDistribution\_2pane\_201601.mxd 2016301 [cistb] [Doc No: GIS-00204]



- |                                 |                                   |                              |
|---------------------------------|-----------------------------------|------------------------------|
| ● City                          | <b>Swainson's Hawk</b>            | ⌚ Project                    |
| — Major roads                   | Modeled Foraging Habitat          | Permanent Transmission       |
| — State and Interstate Highways | Impacted Modeled Foraging Habitat | Temporary Transmission Lines |
| — Delta Island                  | Modeled Nesting Habitat           |                              |
|                                 | Impacted Modeled Nesting Habitat  |                              |

0 1,000 Feet

\*\* Temporary work areas may be restored after construction is complete, however, for the purposes of impact analysis, the effect is considered permanent.

\*\* The location of the transmission lines have not been finalized. Transmission structures will be constructed to have the least impact to the surrounding habitats.



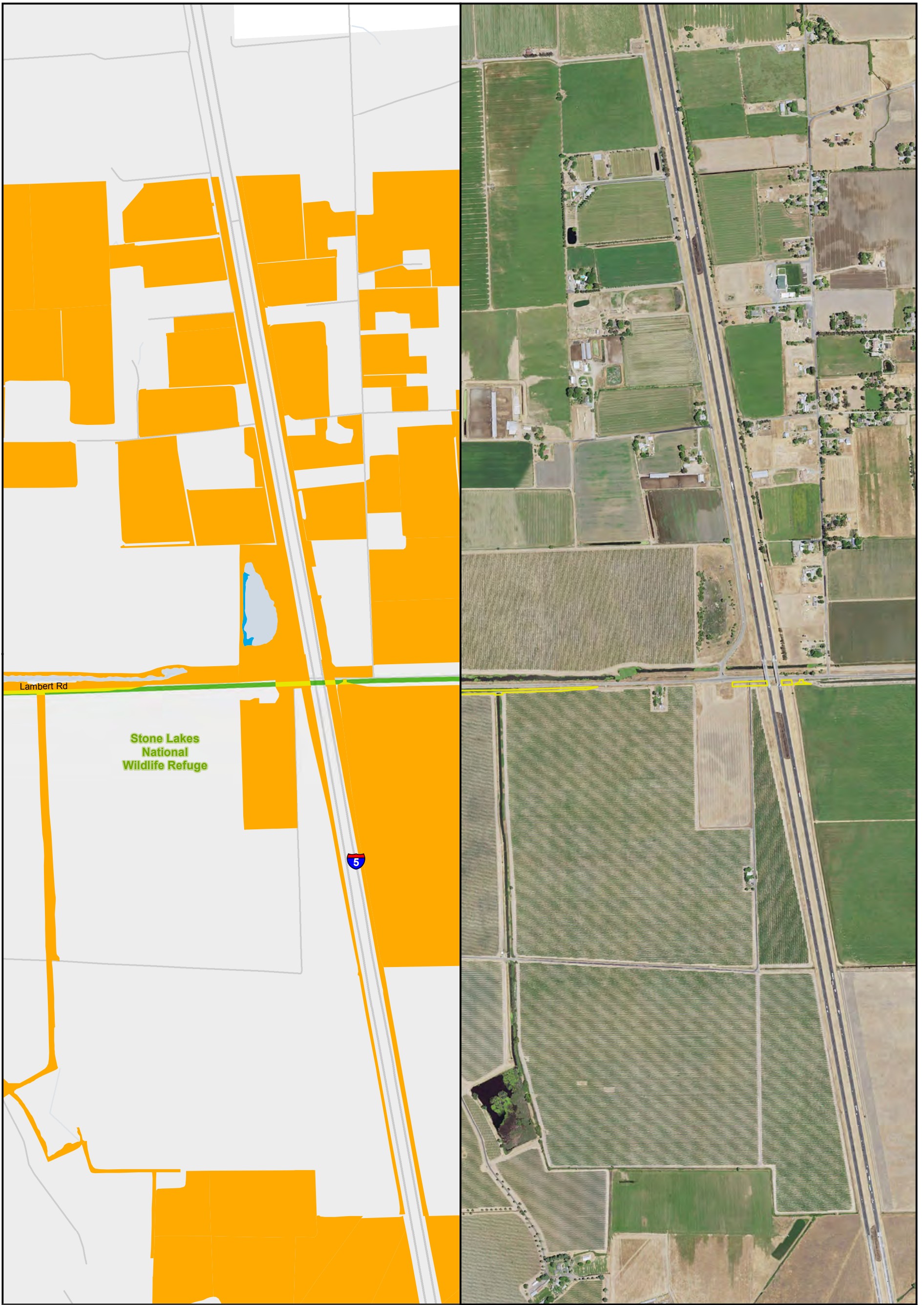
Sources: CCO Conveyance, CA WaterFix 2015; Species Occurrences, ICF 2013; Modeled Habitat, ICF 2013, ICF 2015; NAIP 2014



**Impacts to Swainson's Hawk Modeled Habitat from Water Conveyance Facility Construction  
Modified Pipeline Tunnel/Clifton Court Forebay Option  
Transmission Line - East leg  
Figure 4.7-7 of 4.7-38**

**DRAFT**

Y:\Biological\Assess\_ESA\_Sect7\_Permitting\EN\126\_15\_SpeciesDistribution\_2pane\_201601.mxd 2016301 [c:\istb] [Doc No: GIS-00204]



- City
  - Major roads
  - State and Interstate Highways
  - Delta Island
- Swainson's Hawk**
- Modeled Foraging Habitat
  - Impacted Modeled Foraging Habitat
  - Modeled Nesting Habitat
  - Impacted Modeled Nesting Habitat
- Project**
- Permanent Transmission
  - Temporary Transmission Lines

0 1,000 Feet

\*\* Temporary work areas may be restored after construction is complete, however, for the purposes of impact analysis, the effect is considered permanent.

\*\* The location of the transmission lines have not been finalized. Transmission structures will be constructed to have the least impact to the surrounding habitats.



Sources: CCO Conveyance, CA WaterFix 2015; Species Occurrences, ICF 2013; Modeled Habitat, ICF 2013, ICF 2015; NAIP 2014



**Impacts to Swainson's Hawk Modeled Habitat from Water Conveyance Facility Construction Modified Pipeline Tunnel/Clifton Court Forebay Option Transmission Line - East leg**  
**Figure 4.7-8 of 4.7-38**

**DRAFT**