

1957 family reunion at Snug Harbor on Steamboat Slough.  
Sitting at the beach area Easter week end.



1957 at the beach area of  
Snug Harbor-Steamboat Slough



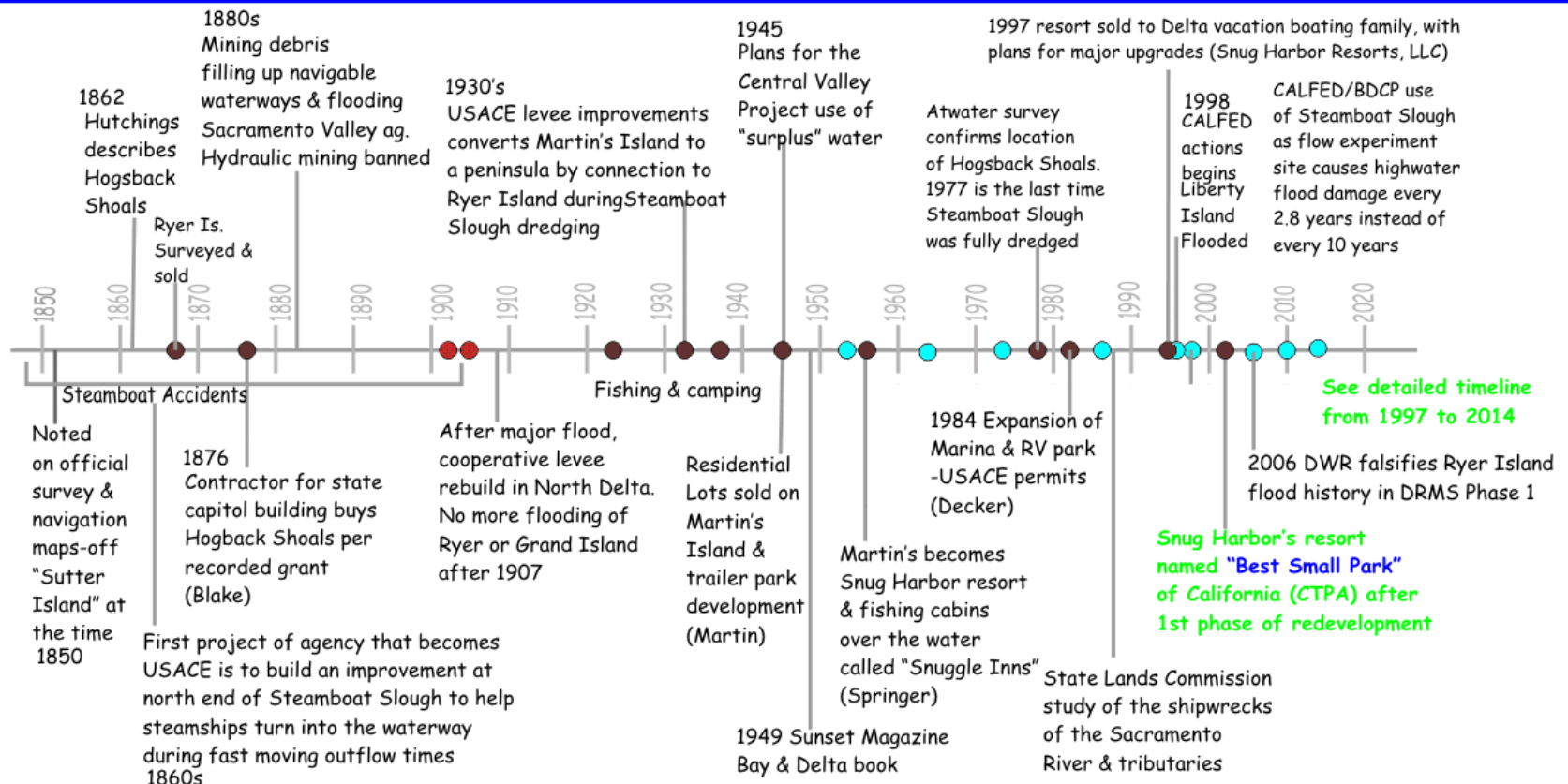
Easter week end annaul reunion

## TIMELINE OF HOGSBACK SHOALS TO SNUG HARBOR & RESORT DEVELOPMENT

- Hogsback Shoals to Snug Harbor land development & uses
  - Flooding of Ryer Island, which can limit access to Snug Harbor
  - Highwater on Snug Harbor; peninsula is 9 to 14 feet above sea level.
- Documented highwater events occurred only when there was very high precipitation & record outflow, about once every 10 years, until CALFED actions changed Liberty Island, river flows and DCC operations



Snug Harbor is a peninsula located off Ryer Island, on Steamboat Slough. Snug Harbor was originally part of the "Hogsback Shoals" series of small islands that are noted in books and records of Steamboat travel and shipwrecks of California's early days. Some official historic maps refer to the waterway as the Sacramento River instead of Steamboat Slough; see Historical Bancroft's map for example.



Note: Go to <http://www.snugharbor.net/timeline.html> to view interactive timeline where you can click on the words to go to links of the documents or maps described

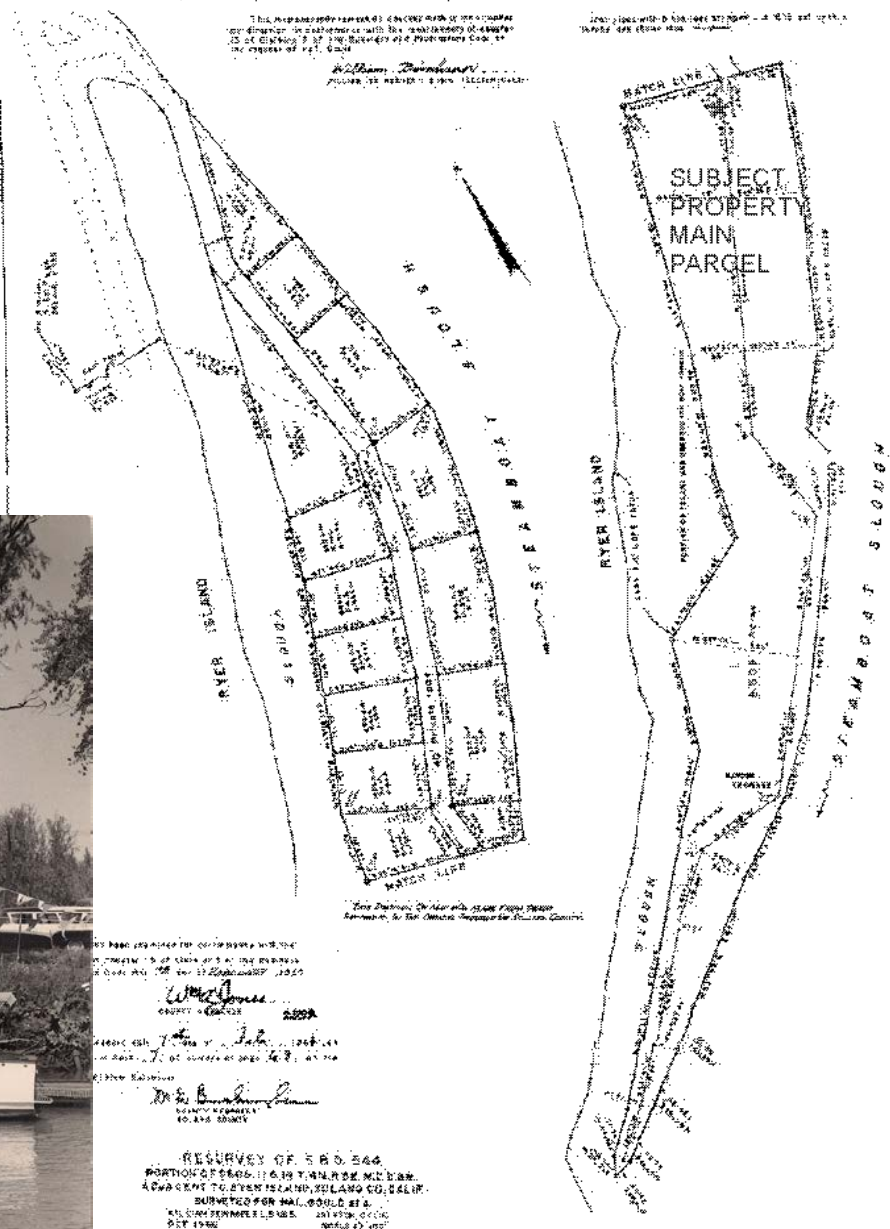
1937 view of the peninsula that is known as "Snug Harbor"







Snug Harbor Resort on Steamboat Slough in th 1950's



"Snuggle Inns" over the water 1950's



View from Steamboat Slough

Ferry between Ryer and Grand Islands on Steamboat Slough 1950's



- [FAQ Miscellaneous](#)
- [Weather](#)

## CURRENT CONDITIONS

- [Area Maps](#)
- [Highway Tables](#)
- [Mountain Highways](#)
- [List of Current Conditions](#)
- [Time and Date of Last Highway Update](#)

## FREEWAY SPEED SENSORS

- [San Diego](#)

## AREA MAPS

- [1. Northwest](#)
- [2. Northern](#)
- [3. North Central](#)
- [4. Bay Area](#)
- [5. Central Coast](#)
- [6. South Central](#)
- [7. Los Angeles](#)
- [8. Inland Empire](#)
- [9. Eastern Sierra](#)
- [10. Central](#)
- [11. San Diego](#)

## Road Information - Area Maps - Caltrans District Three (North Central California)

Before driving, check with the Caltrans Highway Information Network (CHIN) **800.427.7623**

[View a larger map](http://www.dot.ca.gov/hq/roadinfo/do3map.htm) <http://www.dot.ca.gov/hq/roadinfo/do3map.htm>

*The following routes are not visible on the map. Click on the route number to obtain information.*

SR 12, SR 51, SR 84, SR 104, SR 149, SR 153, SR 191, SR 193, SR 220, SR 244, SR 275

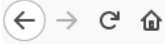
**5-31-2012 CalTrans eliminates SR 84 and 220 on the map to limit awareness of access to Ryer Island in the Delta**

*Go To Northwest California Map*

*Go To San Francisco Bay Area Map*

*Go To Central California Map*

*Click for Lake Tahoe Basin*



www.snugharbor.net/ferry\_and\_caltrans\_updates.html

July 9, 2013 Real McCoy Ferry between Rio Vista and Ryer Island closed. We received notice from CALTRANS that the new Real McCoy Ferry broke once again. CALTRANS notice says they do not know when the ferry will be fixed. So why don't they rent the old Real McCoy Ferry which they sold, it was updated and recertified, and then the new ferry, which breaks down often, can get repaired or remade so it won't keep breaking. Notice how the new ferry happens to

**Real McCoy II Ferry Closed For Emergency Hydraulic Repairs**  
No Estimated Time to Return to Service

Solano County - The California Department of Transportation (Caltrans) has suspended service of the Real McCoy II Ferry to Solano County's Ryer Island for emergency hydraulic repairs. The Real McCoy II has been out of service at approximately 10:30 a.m. on Sunday, July 7th. Currently, there is no estimated time to return the Real McCoy II Ferry to regular service. Caltrans will make an announcement once a determination has been made.

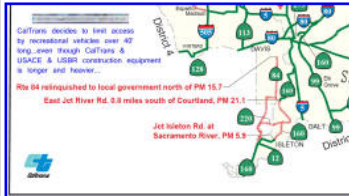
The Real McCoy II also known as the Cache Slough Ferry, provides regular service on State Route 84 between Ryer Island and the City of Rio Vista in Solano County.

**Real McCoy II Ferry Detail**

During the service interruption, motorists are advised to use Highway 100 and the J-Mac Ferry along Highway 200.

For the latest information, motorists can call the California Ryer Island Ferry Update Line at 916.622.8121.

break just when it is the busiest travel time in the Delta?



In the meantime, please note that the J-Mac Ferry is running just fine. We posted a photo given to us by some long time Snug Harbor patrons who have been vacationing here since the 1940's! [more 1950's](#)



**February 21, 2013:** CalTrans really should be ashamed of itself. The original Real McCoy Ferry was reliable and ran for 65 years before being sold to someone who rents it out in the Mare Island area. The new Real McCoy Ferry II is apparently not capable of handling the traffic like the older one, so it constantly breaks down. Plus, the new ferry appears to be designed to limit access by recreational vehicles due to the "v" built right into the main deck of the ferry which can cause some long motorhomes to scrape bumpers when getting on the ferry at the Rio Vista side. We suggest you do *not* plan to use the ferry unless you call the morning of the day you plan to travel on the ferry. Note the Rio Vista ferry runs every 20 minutes starting on the hour. The J-Mac ferry by Howard's Landing on Grand Island, which crosses Steamboat Slough to Ryer Island, runs "on demand" or when needed. But the larger motor homes can not easily drive onto the smaller J-Mac ferry, so all large RVs should plan to use the BRIDGE route to come to Ryer Island and Snug Harbor. We suggest you print out and use the map to the upper right when driving around the North Delta because some cell phone carriers and GPS services don't work well in the Delta.



to SR 160, east side of the Sacramento River in Walnut Grove, drive north a few hundred yards, then cross another bridge to get on the west side of the Sacramento River to continue your drive to Snug Harbor, either using the route crossing Grand Island at SR 220 or going up to Courtland Road and coming down to the Ryer Island bridge across Miner's Slough, or else going up to the Steamboat Slough bridge and turn left to go down Grand Island Road to the J-Mac Ferry (i.e. follow the signs to Grand Island Mansion and the ferry will be a few miles further down Steamboat Slough from the mansion) Your GPS will not have the current bridge maintenance schedules and detour routes, so please remember to print out a [Delta Map](#).

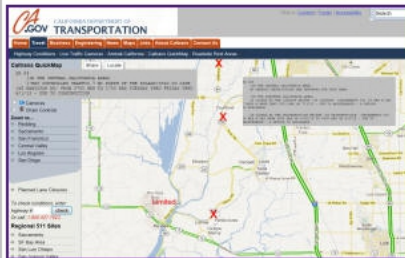


**6-16-2012.** Caltrans plans to close the Isleton Bridge around **6-18-2012 AFTER the Cajun Festival**, so you can still use that bridge to get to Isleton. Note that as of a few days ago, online the CalTrans website says the bridge is already closed! Note again....CalTrans changed its mind and is keeping the bridge open until further notice-good plan!

PLEASE, please remember to print out our map of the Delta, [Delta Map](#) since CalTrans has been opening and closing roads and bridges, and placing detour signs in such a way that most travelers might get a bit confused regarding which way to go. For example, note the detour arrows located at a main intersection in Walnut Grove, supposedly directing travelers how to avoid whatever bridge or road is closed this week.

Which way would you turn?

[images2012/caltrans/RMC Car Count.pdf](#) [images2012/caltrans/RMC logs.pdf](#) some stats from Caltrans



**May 31, 2012** From about May 27 to June 2nd, CALTRANS is intentionally limiting access to the North Delta area, including or especially Ryer Island. Click on the map to see the closed bridges and roadways with limited access or delays, with printscreens from the descriptions from the CalTrans website. May 30,31 and June 1st there are supposed to be many politicians and influential people in the Delta or a Discover the Delta event, and for some on-the-ground Delta tours by Delta residents.

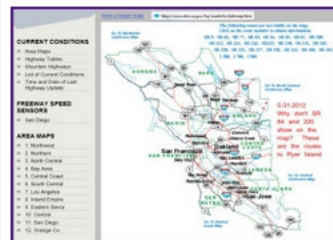
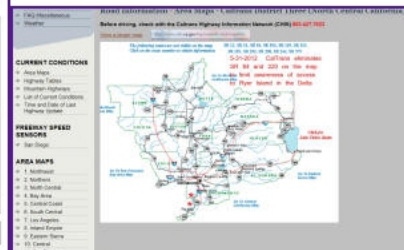
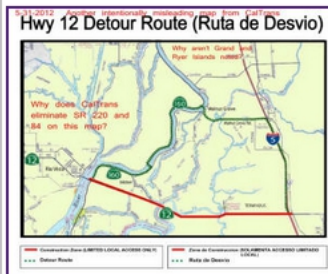
So why did CalTrans pick now to close bridges and repair roads? Perhaps there will be some "unannounced" state and federal politicians in the Delta to view SR 160 with all Delta traffic being diverted to 160 to further validate making it a "scenic highway"? Or is there a

very big Delta construction or conveyance project that will happen in the next few days?

[images2012/caltrans/84 real %20mccoy closure120601.pdf](#)

[images2012/caltrans/Flyer for Posting v2.pdf](#)  
[images2012/caltrans/Detour Mapjune2012.pdf](#)

On top of it all, if you review the maps of the area from CalTrans, you will see the many different ways CalTrans makes it appear that there is no access to Ryer Island, or no road to reach Snug Harbor. Yes, we do complain to CalTrans, but each time we do, yet another misleading map comes out, and another road gets scheduled for "repairs" which results in limiting access or discouraging travel to Ryer Island.....WHY?





[Index](#) [Reservations](#) [Cottages](#) [RV sites](#) [Marina](#) [Rates](#) [Leases](#) [Photos](#) [Videos](#) [Maps](#) [Directions](#) [Contacts](#) [About Snug Harbor](#) [About the Delta](#) [Historic Delta](#) [Fishing](#) [News](#) [To Do](#) [Restaurants](#)

## CALTRANS Updates for 2015

For 2013 and earlier CalTrans notices, go to the previous [ferry & CALTRANS updates](#)

**Rio Vista Ferry & CalTrans Updates** [510-622-0120](tel:510-622-0120) [DELTA FERRY HISTORY](#)

We suggest you print out our North Delta Map: [Delta Map](#)

- May 2017

As of 5-18-17 both ferrys are running again. However, We advise all visitors with RVs to plan to use the bridge route to Ryer Island and Snug Harbor. When on the road, you might want to look at <http://DeltaCalifornia.com> which has been revised to show static maps of the roads of the Delta, as online mapping software and in-car GPS get very confused in the Delta and tend to send travelers the long way around or to the entirely wrong city. You can also go to <http://dot.ca.gov> and go to the "quickmap" and click on the options for showing if roads are closed or if there is slowed traffic. You can even click on the option to see the CalTrans highway cams. Look for the Hwy 12 cam near Isleton if you want to see local Delta weather! Map and directions to Snug Harbor when on the road: <http://deltacalifornia.com/delta-maps/snug-harbor-ryer-island-delta-ferrys/> or <http://www.snugharbor.net/images-2013/maps/directionstosnugharbor1.jpg>
- January 2017

1-12-17 BOTH ferrys are not running, because there is too much floating debris in the rivers. The flows are high too. In 2006 the old Rio Vista Ferry did not have a problem with running during even higher flows. One of the differences this time may be the fact Prospect Island has been flooded for "restoration" and that may have added more logs and trees into Cache Slough, or the hydraulic pattern may have changed in an unexpected way. In any case, both ferrys are down so you need to use the Miner Slough bridge to get to Ryer Island and Snug Harbor.
- Summer 2016

Real McCoy Ferry II has been having hydraulics issues and has sometimes been down for a few days at a time. It is important if you plan to use that ferry to call and confirm with CalTrans, or else email [reservations@snugharbor.net](mailto:reservations@snugharbor.net) to request confirmation if ferry is running ... or not. Note that only CalTrans can provide the most up-to-date information on this ferry.
- May 2016

Both ferrys seem to be running on their schedules. EXCEPT that one night in late April, around 10 PM, CalTrans closed both ferrys, and people trying to come to Ryer Island were not allowed to use the bridge. People waited at the bridge until 2:00 am as two guys in "CalTrans clothing" blocked bridge use. Once people could cross the bridge again, it was clear there was no road work being done. We have filed a Freedom Of Information Act to request the purpose of the closure, and to ask for advance notice of such apparently planned closures. Update: CalTrans says it was not CalTrans who was blocking access to Miner's Slough bridge for up to 4 hours in the middle of the night. Issue has been escalated to county security officials as it is illegal for persons to impersonate CalTrans employees and block traffic.
- February 2016

Real McCoy II ferry was down for more than 2 months. It started running again on 2/9/2016 and broke again by 2/10/2016. As of Feb 19 it is running again. Who ever designed and approved this ferry should be REALLY ashamed of themselves! It breaks down so much!

impersonate CalTrans employees and block traffic.

February 2016 Real McCoy II ferry was down for more than 2 months. It started running again on 2/9/2016 and broke again by 2/10/2016. As of Feb 19 it is running again. Who ever designed and approved this ferry should be REALLY ashamed of themselves! It breaks down so much!

Rio Vista/Real McCoy II ferry continues to break down whenever so we've been given notice by CalTrans that the ferry will not be working until sometime in Februar 2016. J-Mac Ferry is running though. There was a meeting in Rio Vista on 11/18 about proposed Miner's Slough bridge replacement but you would think CalTrans would FIRST show that there is actually a working ferry for the Rio Vista to Ryer Island connection. The bridge plans say the access road on SR 84 will be a one way road...for THREE years starting in 2018! They need three years and up to \$27 million to rehab an existing small bridge or build a new one? They can build the Golden Gate Bridge in 4 years, the first and second Bay Bridges in 3 years and they need 3 years for a 130 foot bridge across Miner's Slough? Right. What is really happening is that there will be some sort of conveyance construction or manjor fracking in the area and CalTrans is trying to discourage locals from seeing what is going on. Modus operandi for CalTrans.



October 2015 Currently both ferrys to Ryer Island are running. Please remember that anyone coming to Snug Harbor in a motorhome, pull trailer or 5th wheel needs to use the BRIDGE route to Ryer Island-State Route 84 from Sacramento-or Jefferson Blvd to Courtland Road to Ryer Road to the Miner's Slough bridge onto Ryer Island. **CalTrans sent out notice of "bridge painting work" on 3 Mile Slough bridge at State Route 160 so traffic will be alternating one-way for an indeterminant amout of time.** Note it is in the area where USBR proposed a gate and fish barrier across 3 Mile Slough as well. You might want to plan to avoid SR 160 from the Antioch Bridge to Highway 12, if at all possible for the next few weeks.

August 2015 CalTrans decided to shut down the Real McCoy Ferry basically for the month of August. Call them for details. No question about it, CalTrans is doing their ultimate best to discourage vacation travel in the Delta, so people won't notice all the fracking trucks and water conveyance construction activities going on.

June-July 2015 CalTrans is doing all sorts of projects in the Delta along Highway 12 between Highway 5 and the Mokelumne River bridge....slowly. CalTrans has been blocking traffic or slowing it down for several months. We suggest you AVOID using Hwy 12 between Highway 5 and the Mokelumne River Bridge. Easy route to Snug Harbor: For people in RVs coming to Snug Harbor, plan to use **State Route 84 (Jefferson Blvd)** to Courtland Road on the WEST side of the Sacramento River, then follow Courtland Road to Ryer Road, and cross the bridge onto Ryer Island. Turn LEFT to go to Snug Harbor. Don't count on your phone or GPS in the Delta region. Currently Google maps confuse the location of the Sacramento River and San Joaquin River so if they can't get the river names right you can bet the road names will most likely be wrong. Add to that CalTrans taking down the large route crossings and bridge names.... One bit of good news is that the J-Mac Ferry is up and running again so it is quicker to get to Walnut Grove for shopping and restaurants again.

May 2015 CalTrans sent around notice that a new paving job will start on Hwy 12 west of Hwy 5 to the Mokelumne River Bridge, causing slower traffic as there will be 1-way escorted lanes. In typical fashon for CalTrans, they picked the busy recreation season to do work that could have been done in winter when they had blocked off traffic for the changes to Mokelumne River bridge. In any case, **we suggest you use the Walnut Grove/Thorton exit** instead of Hwy 12 if coming up Hwy 5. To see and print out alternate routes for travel in the North Delta go to [maps](#) page. When on the road <http://www.dot.ca.gov> has a quick reference map that shows you the locations where there is work or a closed road or slowed traffic.

CalTrans timed the "repairs" of the J-Mac Ferry for this spring, and the ferry should be back in operation before **4th of July week end**. CalTrans has given no reason for the extension of the repairs on the J-Mac.

For Snug Harbor customers, the Rio Vista Fery over to Ryer Island runs every 20 minutes but it will NOT take RVs unless very small. Trucks pulling boat trailers are OK but only if you have a bar on your boat trailer protecting your boat propeller as the ferry landing is steep at low tides. For people coming to Snug Harbor in and RV, please plan to use the BRIDGE route to Ryer Island. It is not worth risking your RV bumper to get on the ferry, so plan to drive down to use using Jefferson Blvd in West Sacramento, or else from 160/12 area follow the [Delta Map](#)