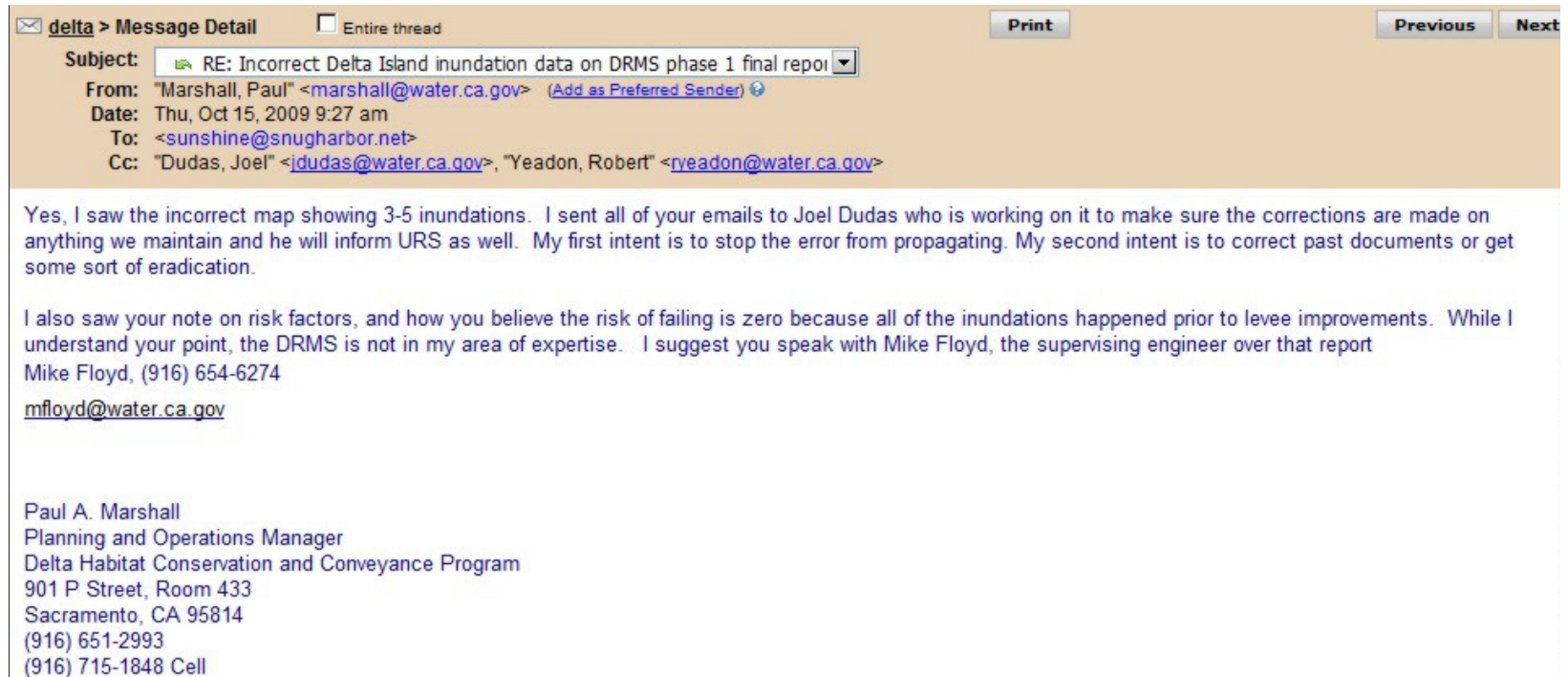


# SHR-2-249

The following screen prints of incorrect Delta locations is provided as examples of the incorrect data about the Delta published primarily by Ca. Dept of Water Resources, and also other government organizations or NGO's, or their consultants. These examples are provided to show the lack of attention to important and simple details like locations. If the persons drafting the plans to replumb the Delta and California's water conveyance system can't even use correct map locations, how can any reasonable person trust the rest of the data in the reports? In addition, using incorrect location data has resulted in publication of false data regarding specific location in the Delta, and decisions of BDCP and WaterFix/EcoRestore are based on that incorrect data.

Starting approximately 2005, right during the time when there were ongoing studies on the Delta under the project titles of DRMS Phase 1 and 2, Bay Delta Conservation Plan, Delta Restoration, NDIP and SDIP, WaterFix and EcoRestore, the locations of the Delta were confused in important ways. Is this an indication that the persons doing the planning and modeling used incorrect baseline data for some of the locations, including both islands and waterways? How can a viewer of a study trust the outcome of a study if something as simple as accurate location is not reported?



The screenshot shows an email interface with the following details:

- Subject:** RE: Incorrect Delta Island inundation data on DRMS phase 1 final report
- From:** "Marshall, Paul" <marshall@water.ca.gov> (Add as Preferred Sender)
- Date:** Thu, Oct 15, 2009 9:27 am
- To:** <sunshine@snugharbor.net>
- Cc:** "Dudas, Joel" <jdudas@water.ca.gov>, "Yeadon, Robert" <ryeadon@water.ca.gov>

The email body contains the following text:

Yes, I saw the incorrect map showing 3-5 inundations. I sent all of your emails to Joel Dudas who is working on it to make sure the corrections are made on anything we maintain and he will inform URS as well. My first intent is to stop the error from propagating. My second intent is to correct past documents or get some sort of eradication.

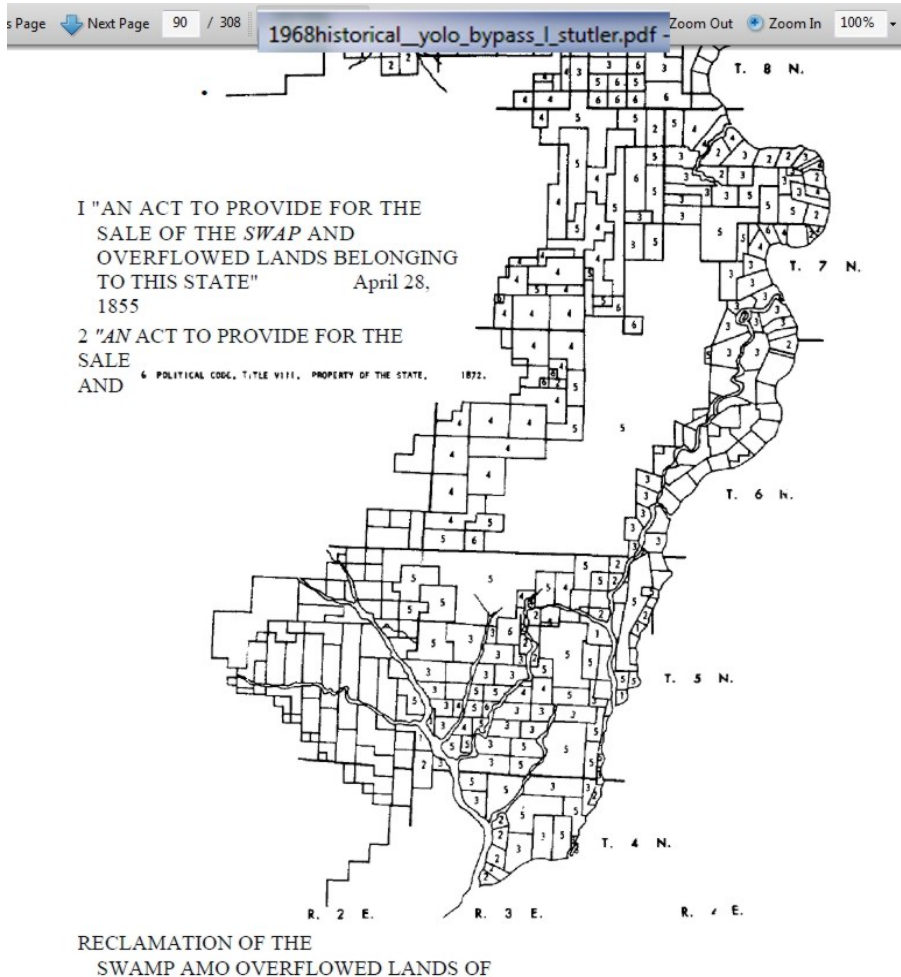
I also saw your note on risk factors, and how you believe the risk of failing is zero because all of the inundations happened prior to levee improvements. While I understand your point, the DRMS is not in my area of expertise. I suggest you speak with Mike Floyd, the supervising engineer over that report

Mike Floyd, (916) 654-6274  
[mfloyd@water.ca.gov](mailto:mfloyd@water.ca.gov)

Paul A. Marshall  
Planning and Operations Manager  
Delta Habitat Conservation and Conveyance Program  
901 P Street, Room 433  
Sacramento, CA 95814  
(916) 651-2993  
(916) 715-1848 Cell

# DIRECTIONALLY CHALLENGED PLANNERS: DWR, USBR, DSC, MWD, CALTRANS AND THEIR CONSULTANTS

Most of the Delta waterway names and island names have not changed since about 1870. So why do the agencies and their Consultants drafting documents related to the Delta use incorrect Location names?



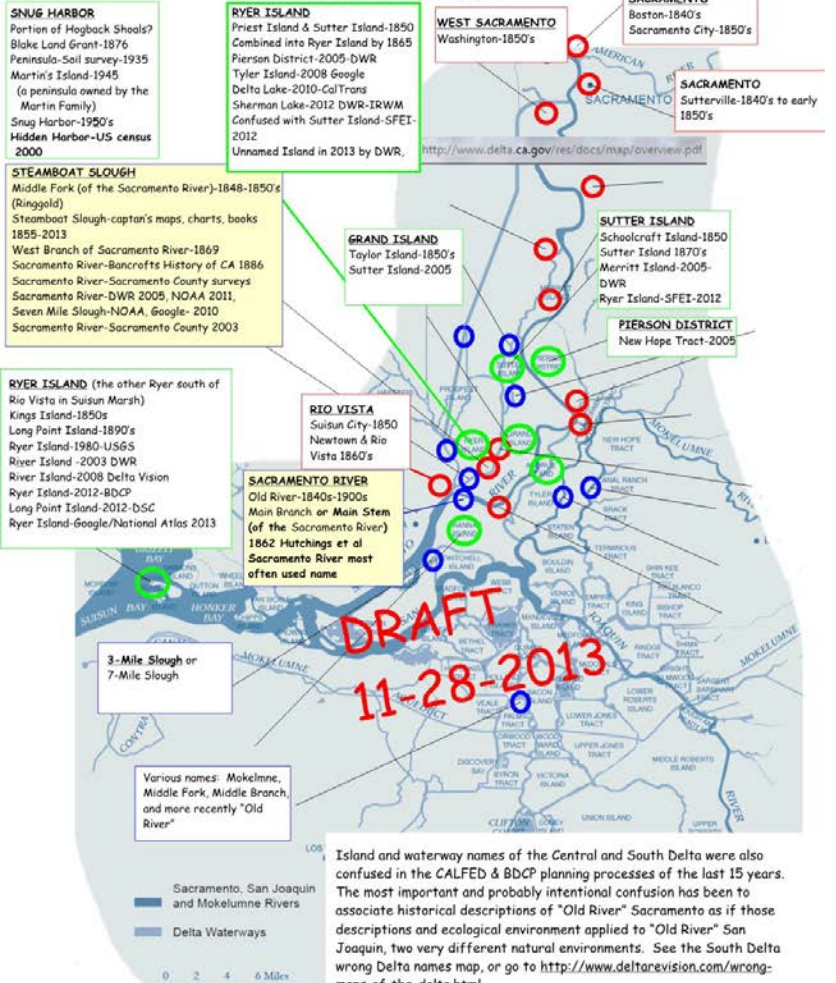
## DELTA WATERWAYS

The 2008 "Delta Overview" published by DWR said on page 11 that "Delta waterways are the single most important geographical feature of the state's water resources system". Given the importance of the waterways, one would think the "Scientists" writing reports about the historical Delta would need to know the names of the waterways and islands and cities, as the names changed over time. This name review has a North Delta focus.

Using the map provided in the Overview, the names of some of the waterways, islands and cities or towns of the North Delta were added, with reference to the map or document which verifies the name associated with the location. On occasion, if needed, current gps coordinates are also provided to assist the viewer in locating the area in an independent map.

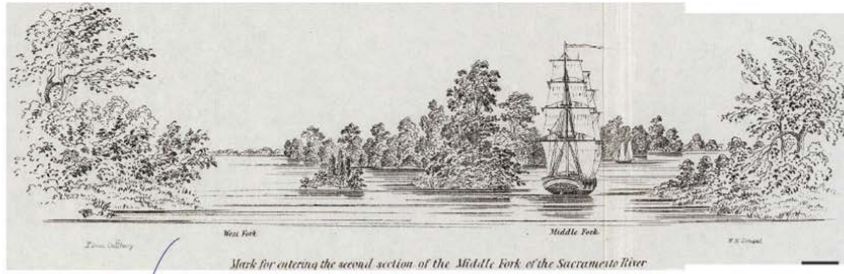
- Correct names are shown in **BOLD**
- Islands with changed names
- Waterways with changed names
- Cities, towns or Delta communities with changed names

The purpose of this map is to show how various government agencies involved in the BDCP confused the location of Delta waterways and islands in their planning studies. If they can not even get the basic locations correct, why would anyone believe any other base data of the computer model upon which the report is based is right?

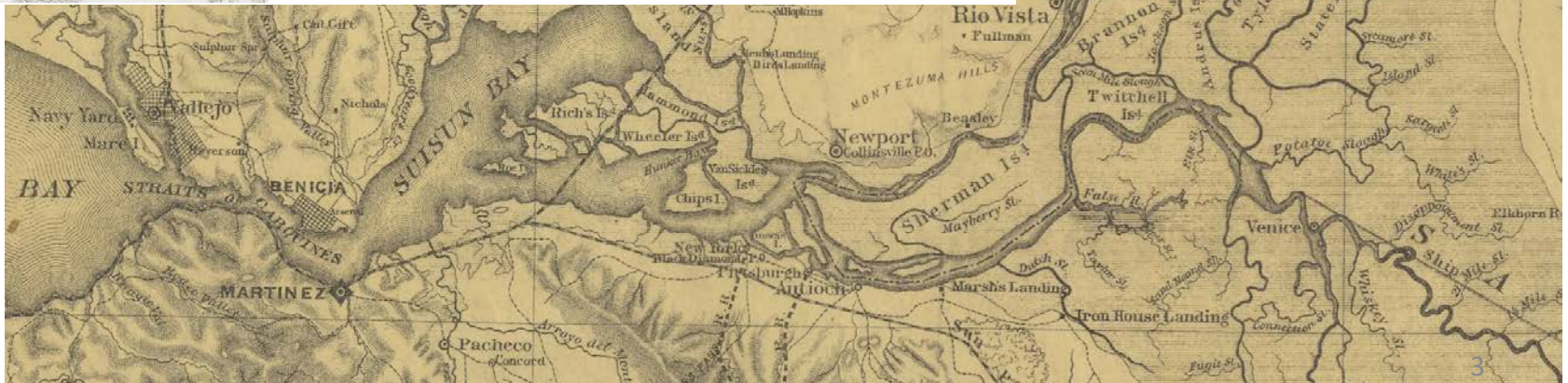
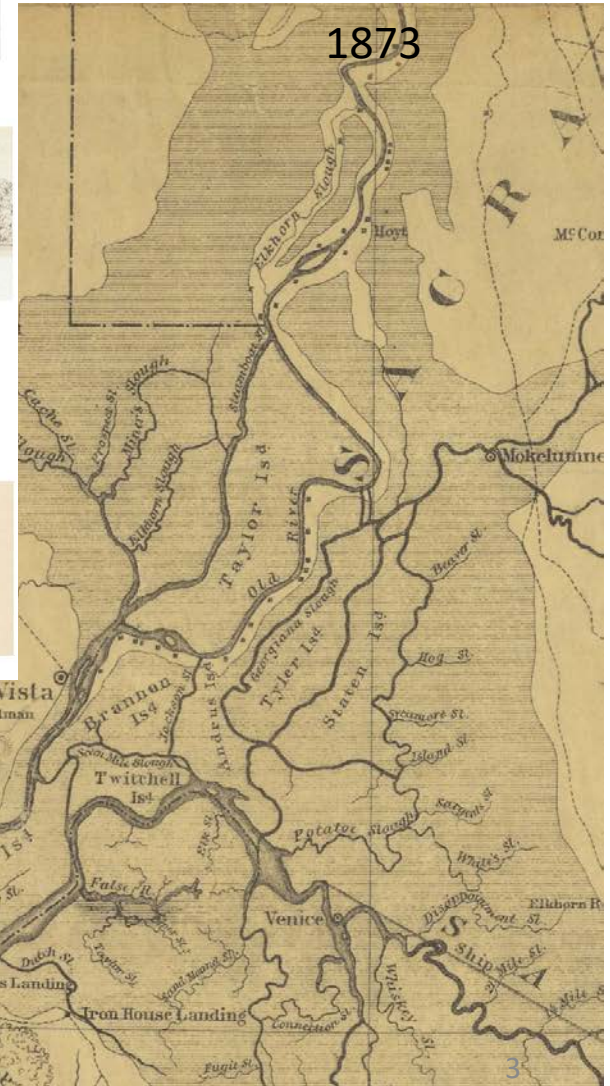
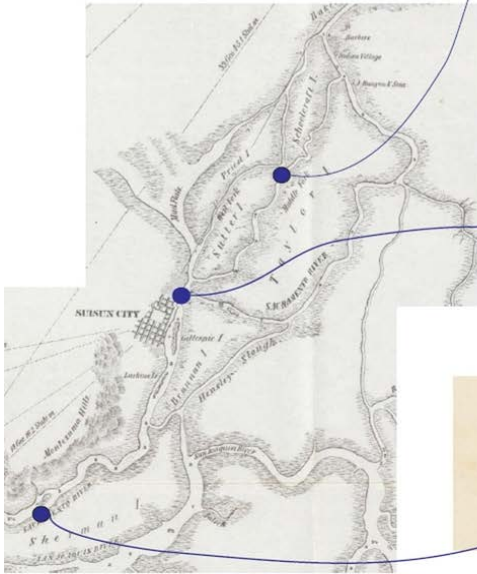


Information compiled by N. Suard, Esq. Snug Harbor Resorts, LLC 11/28/2013

Sketches of the view along the Sacramento River and "Middle Fork" which was renamed Steamboat Slough by 1856.



1850



of the public, by erecting barricades, platforms, &c.; and placing a large number of lamps at favorable points, for the better illumination and inspection of the different chambers.

The discovery being made in the spring, considerable water was standing in some of the deepest of the cavities; but signs were already visible of its recession, at the rate of nearly six inches per day; and in a few weeks it entirely disappeared, leaving the cave perfectly dry. This afforded opportunities for further explorations; when it was found that a more convenient entrance could be made, with but little labor, from an unimportant room within a few feet of the road. This was accordingly done, and this, in addition to its convenience, allows of the free circulation of pure air. Having thus given an historical sketch of the discovery, with other matters connected with its preservation and management, we shall now endeavor to take the reader with us, at least in imagination, while describing it and

SOME SCENES BY THE WAY.

As a majority of visitors will, most probably, be from San Francisco, it may not be amiss, with the reader's permission, to present a brief outline of some of the most interesting sights to be witnessed, from the deck of the steamboat, on our way up the Sacramento. A large portion of the route, from that great mercantile metropolis of the Pacific to the mouth of the San Joaquin, has been already illustrated and described in the first chapter of this work, to which we would again refer his attention.

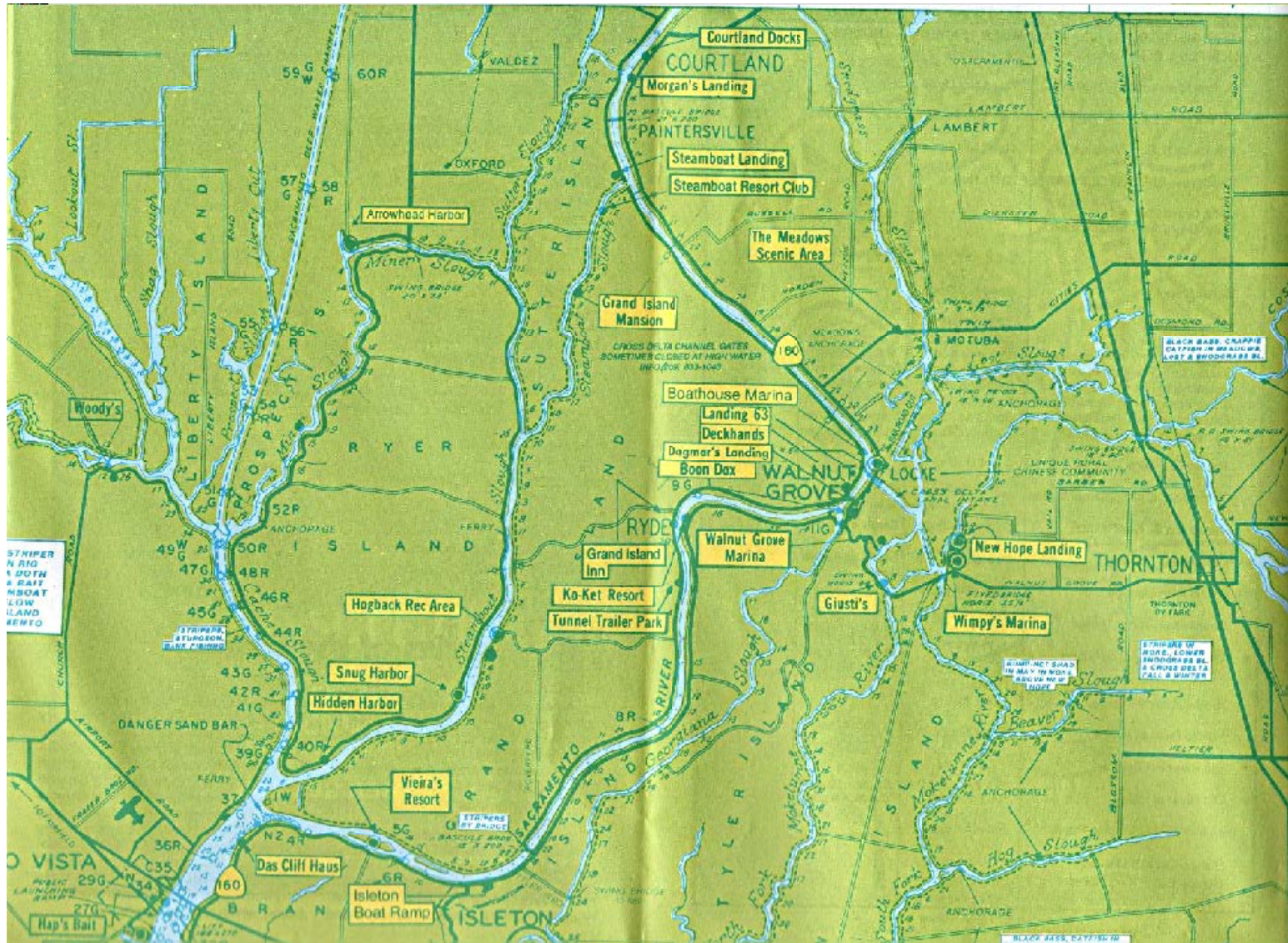
On page twenty-nine, we have described the course of the Stockton boat as to the right; while that bound for Sacramento City sails straight forward, toward the west end of a large, low tule flat, lying between the San Joaquin and Sacramento, named Sherman's Island, and here we enter the Sacramento river. The Montezuma hills, seen on our right, and a few stunted trees on the left, are the only objects in the landscape to relieve the eye, by contrast with the low tule swamp, until we approach the new and flourishing little settlement of Rio Vista. "This town," writes Dr. C. A. Kirkpatrick, the obliging postmaster, "is situated about forty-five



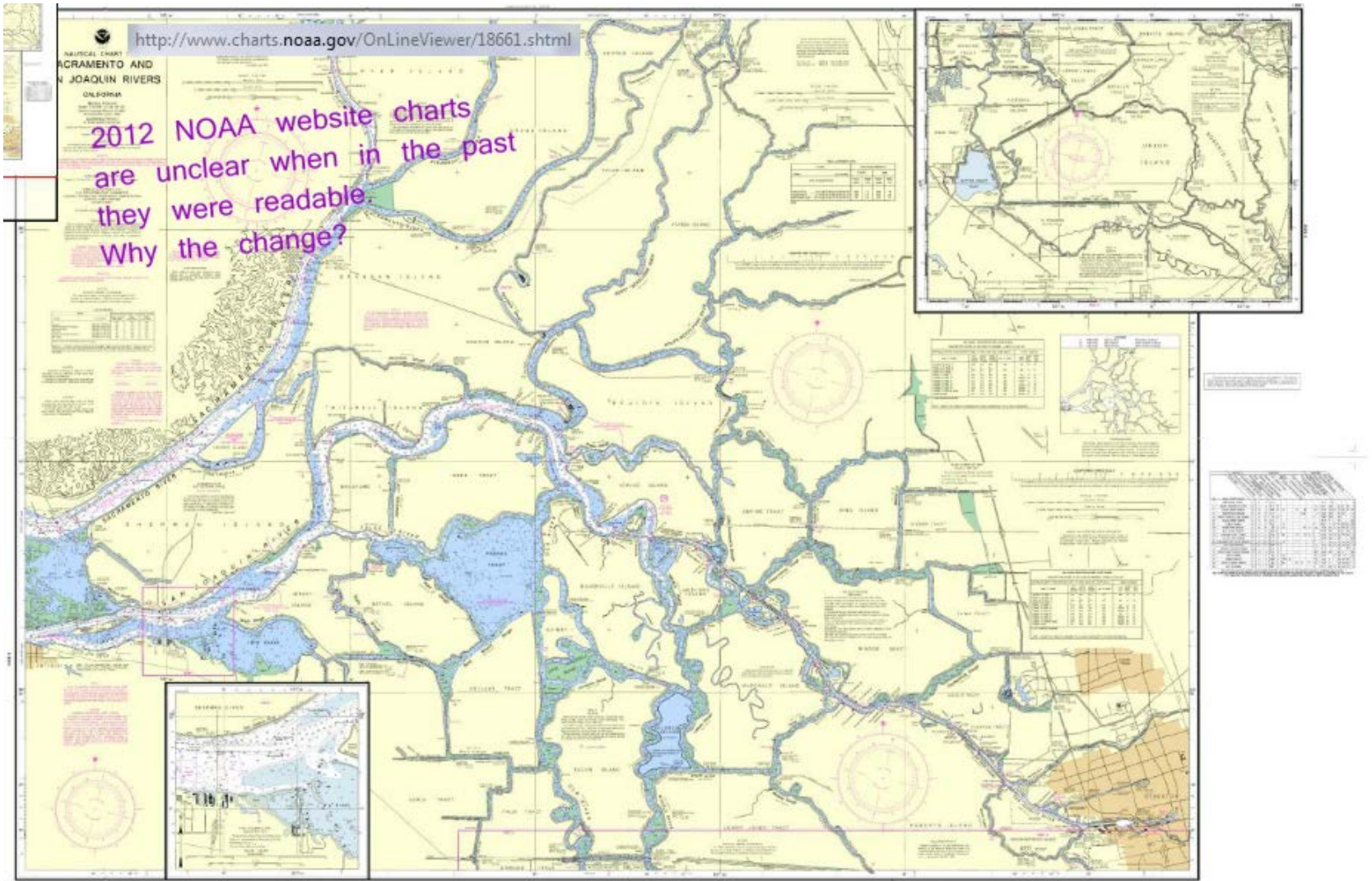
SCENE AT THE LOWER JUNCTION OF THE MAIN SACRAMENTO RIVER, AND STEAMBOAT SLOUGH.

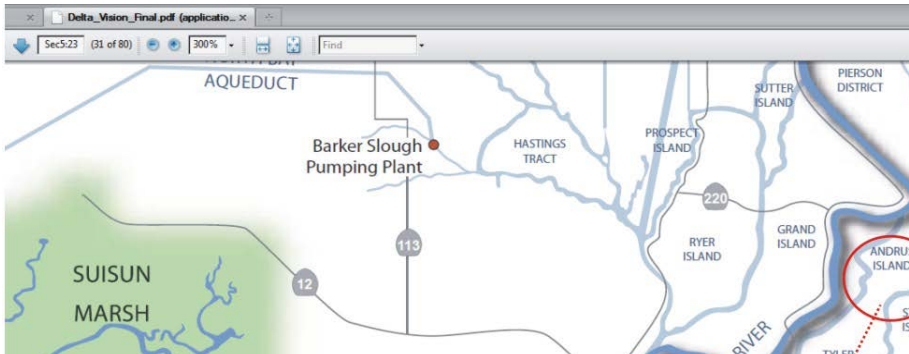
miles below the city of Sacramento, and below the outlets of all the large sloughs, or at least two of the largest, Steamboat and Cache Creek sloughs—uniting with the main, or old Sacramento river, just above this place; making the stream here about one-third of a mile wide. The reader will see that, being upon the main river, so near its outlet into Suisun Bay, not over twenty

# Portion of 2003 Hal Schell Map of the Delta, used as reference map



NOAA charts used to list almost all of the marinas in the Delta. There were at least 130 different marinas in the 1980s. By 2012 the official noaa nautical map lists maybe 10 and there is no explanation of why the other permitted marinas were deleted from NOAA maps.





SECTION 8 VISUAL RESOURCES DRAFT DELTA PLAN PROGRAM ENVIRONMENTAL IMPACT REPORT

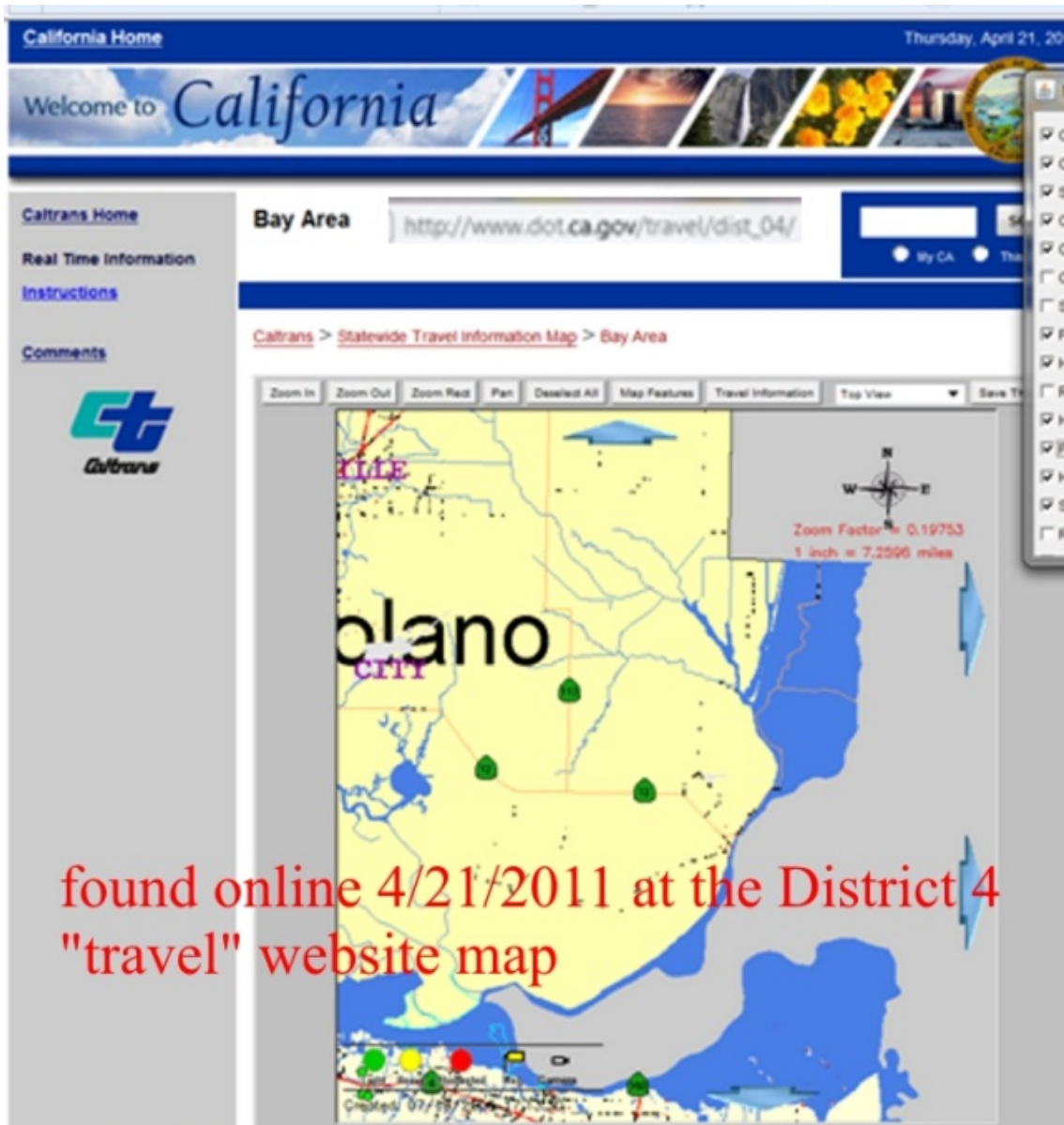
1 **Figure 8-6**

2 **Aerial View of Agricultural Land**

3 *The photograph shows the confluence of Elk Slough (left) and the Sacramento River (right), looking south. This*  
 4 *provides a sense of the various textures and color schemes provided by agricultural land in the Delta. Note the right*  
 5 *angles, concentric line series within agricultural plots, and the variation of greens and browns, indicating fields at*  
 6 *different production stages.*

7 *Source: Photograph taken by EDAW (now AECOM) in 2009*





People traveling in recreational Vehicles go to the CalTrans website to get travel maps that specify the routes allowed for RVs. However, SHR customers called very concerned because they could not figure out how to travel to the park with Ryer Island shown as a lake.



CalTrans response to SHR request to correct the official map online at CalTrans website? They simply eliminated reference To State Route 84 and 220. Then CalTrans limited travel to RVs of 40 feet or less for SR 84, 220 and 160. So will the Contractors doing work in the Delta have to limit their trucks and equipment to 40 feet or less and comply with posted weight Limits on SR 84?

- FAQ Miscellaneous
- Weather

### CURRENT CONDITIONS

- Area Maps
- Highway Tables
- Mountain Highways
- List of Current Conditions
- Time and Date of Last Highway Update

### FREEWAY SPEED SENSORS

- San Diego

### AREA MAPS

- 1. Northwest
- 2. Northern
- 3. North Central
- 4. Bay Area
- 5. Central Coast
- 6. South Central
- 7. Los Angeles
- 8. Inland Empire
- 9. Eastern Sierra
- 10. Central
- 11. San Diego

## Road Information - Area Maps - Caltrans District Three (North Central California)

Before driving, check with the Caltrans Highway Information Network (CHIN) 800.427.7623

[View a larger map](http://www.dot.ca.gov/hq/roadinfo/do3map.htm) <http://www.dot.ca.gov/hq/roadinfo/do3map.htm>

*The following routes are not visible on the map. Click on the route number to obtain information.*

SR 12, SR 51, SR 84, SR 104, SR 149, SR 153, SR 191, SR 193, SR 220, SR 244, SR 275

**5-31-2012 CalTrans eliminates SR 84 and 220 on the map to limit awareness of access to Ryer Island in the Delta**

Go To Northwest California Map

Go To San Francisco Bay Area Map

Go To Eastern Sierra Map

Go To Central California Map

Click for Lake Tahoe Basin

Did SR 84 get renamed 160? Also note that a "detour" in the Delta can Mean adding 2-4 hours to your travel time due to bridge use and limits On weight allowed on the ferrys. For construction projects located on the East side of the Sacramento River, ALL construction traffic should be required to come from the east, not through the Delta, and not use SHR 84 or 160 or whatever new name and number CalTrans plans to use.

CalTrans sign in Walnut Grove by the bridge, confusing people trying to get to Rio vista from Hwy 5 when Hwy 12 was blocked in the Delta

<http://www.dot.ca.gov/dist4/publicaffairs/docs/rte12160mapfront.pdf>

2-4-14: Ferry at SR still broken and, by way, when did SR 84 become 160?



## Rte 12/160 Detours

**REPAIR CONTRACT FOR 3-MILE SLOUGH BRIDGE NIGHTLY CLOSURES OF STATE ROUTE 160 IN APRIL NO THROUGH TRAFFIC ON 160 RIO VISTA - ANTIOCH CLOSURE INFORMATION**

Beginning Thursday, April 1 and continuing through Friday, April 30, State Route 160 (Highway 160) will be closed each night to all through traffic between Rio Vista and Antioch from 9:00 p.m. to 5:00 a.m. the following morning. Only local traffic will be allowed on SR 160 south of Rio Vista or north of the Antioch Bridge. The nightly closures of Route 160 will be in effect every night in April and under all weather conditions to facilitate the necessary repairs to the 3-Mile Slough Bridge.

### TRAFFIC DETOURS

Changeable message signs have been strategically placed throughout the detour routes in both directions to assist in guiding motorists through the detour to destination points ending in Antioch and Rio Vista. These message signs will provide advanced closure notice prior to April 1, and then activated nightly through April to direct traffic during the closure of the 3 Mile Slough Bridge on Highway 160 between Rio Vista and Antioch. Please keep in mind that these detours could add more than 90 minutes to your travel time.

Traffic from the Rio Vista area with destination points in and around Antioch, will be detoured via State Route 12 west to and onto westbound Interstate 80 and west



on I-80 to and south onto I-680 at the Cordelia Junction (I-80/I-680 interchange). Continue south on I-680 across the Benicia-Martinez Bridge and then east onto State Route 4 (about 3.8 miles south of Bridge), at the I-680/Route 4 Interchange in Concord. Continue

east on Route 4 to destination points and detour end in Antioch. Traffic from the Antioch area with destination points in and around Rio Vista, will be detoured via Route 4 west to and then north onto I-680 and continue north on I-680 to and onto I-80 east at the I-80/I-680

Interchange (Cordelia Junction). From I-80 east take Route 12 east, and continue east on SR 12 to destination points and detour end just east of Rio Vista at the Routes 12/160 intersection.



CT 1400, Audio Visual Graphic Services, 3/08

## 5-31-2012 Another intentionally misleading map from CalTrans Hwy 12 Detour Route (Ruta de Desvio)



Construction Zone (LIMITED LOCAL ACCESS ONLY)

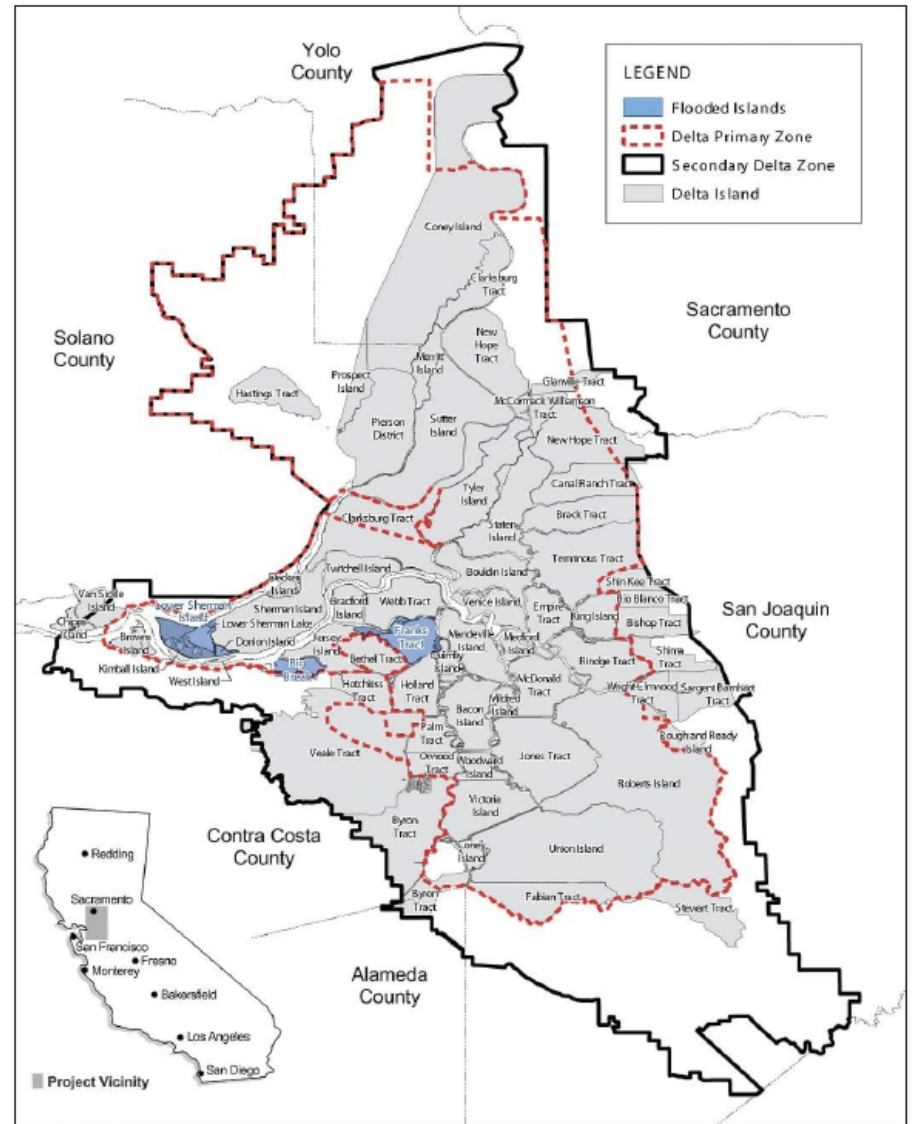
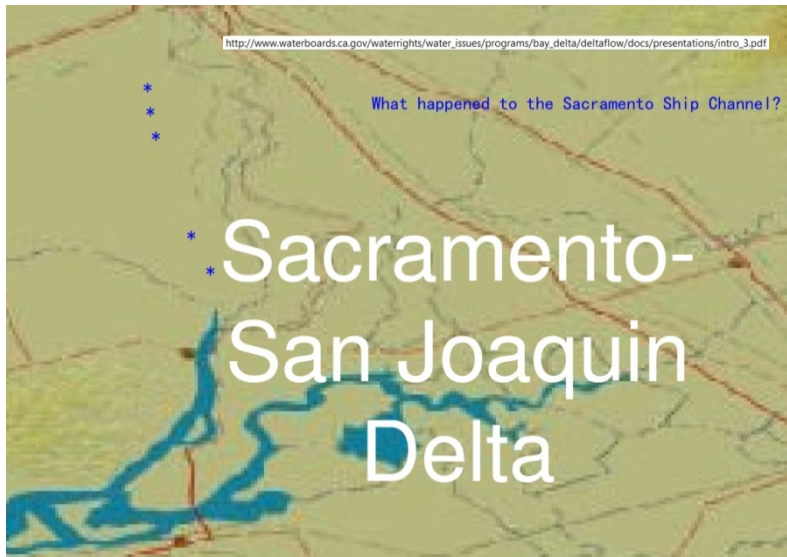
Detour Route

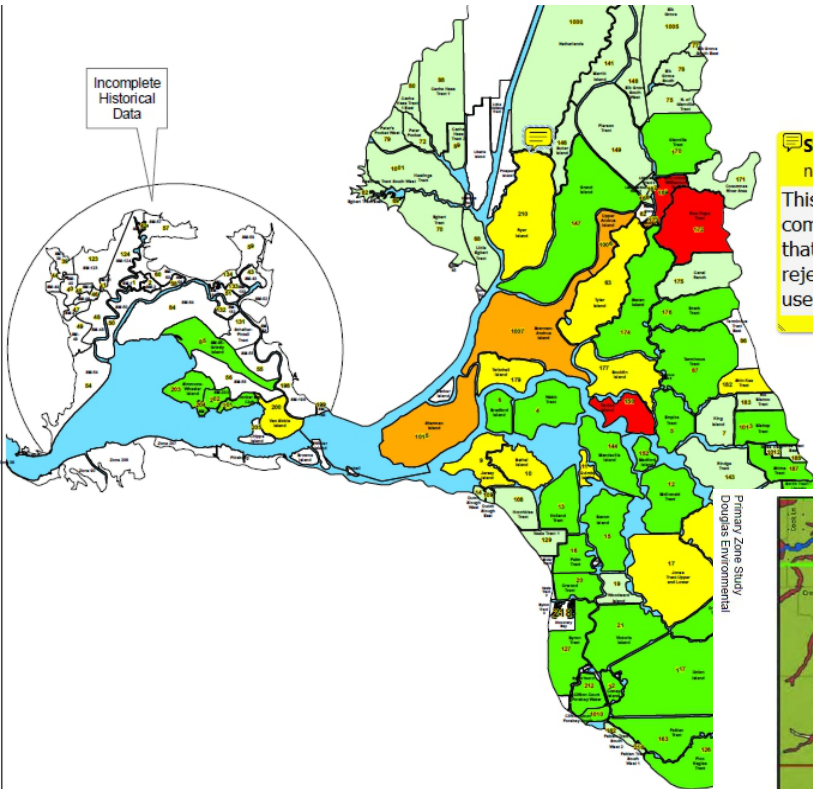
Zona de Construcción (SOLAMENTE ACCESO LIMITADO LOCAL)

Ruta de Desvio

To the right: DWR "Breechin" studies for the In-Delta storage plans published the map to the right with many incorrect islands located. Who would trust the quality of their baseline data and outcome based on this map?

Below: What happened to the Sacramento River, Steamboat Slough, Sutter Slough, Georgiana Slough, etc?





**Sticky Note** 2/5/2011 9:04:10 AM  
 nss graphics Options

This map and the data used to compile it have so many mistakes that the entire study should be rejected by scientists who care to use historical facts.

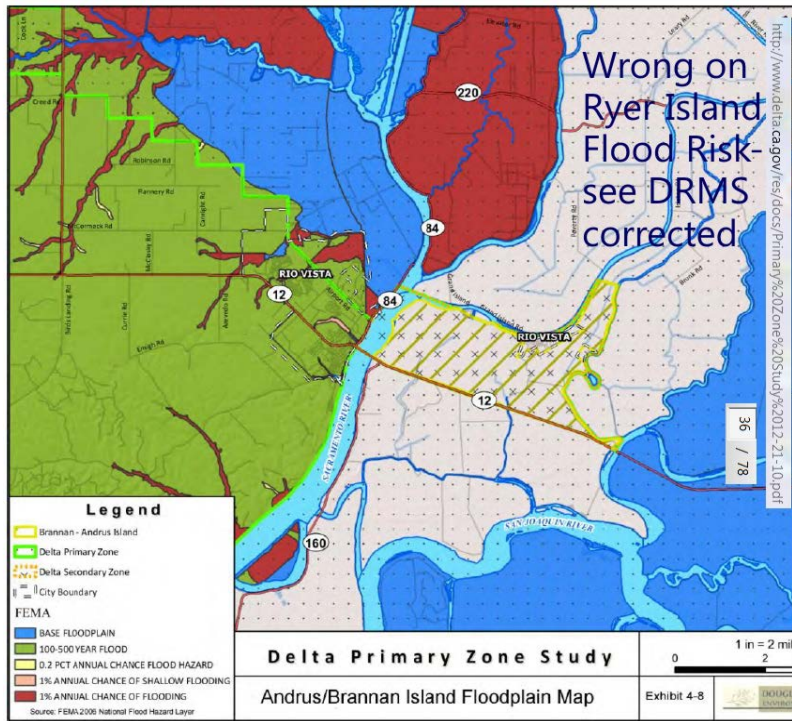
Examples of incorrect historical data that has been published by DWR, related to Ryer Island. Note the Paul Marshall email from the first page of this set. As of the 2017 WaterFix hearings the incorrect baseline data from DRMS Phase 1 was still being used with no reference to the corrected data also on the DWR website

Number of Failures in the Last 100 years

- >7
- 5-7
- 3-5
- 1-3
- <1

0 2.5 5 10 Miles

<b>URS</b>	DRMS	His
	28815935	I:



**Legend**

- Brannan - Andrus Island
- Delta Primary Zone
- Delta Secondary Zone
- City Boundary

**FEMA**

- BASE FLOODPLAIN
- 100-YEAR FLOOD
- 0.2 PCT ANNUAL CHANCE FLOOD HAZARD
- 1% ANNUAL CHANCE OF SHALLOW FLOODING
- 1% ANNUAL CHANCE OF FLOODING

Source: FEMA 2006 National Flood Hazard Layer

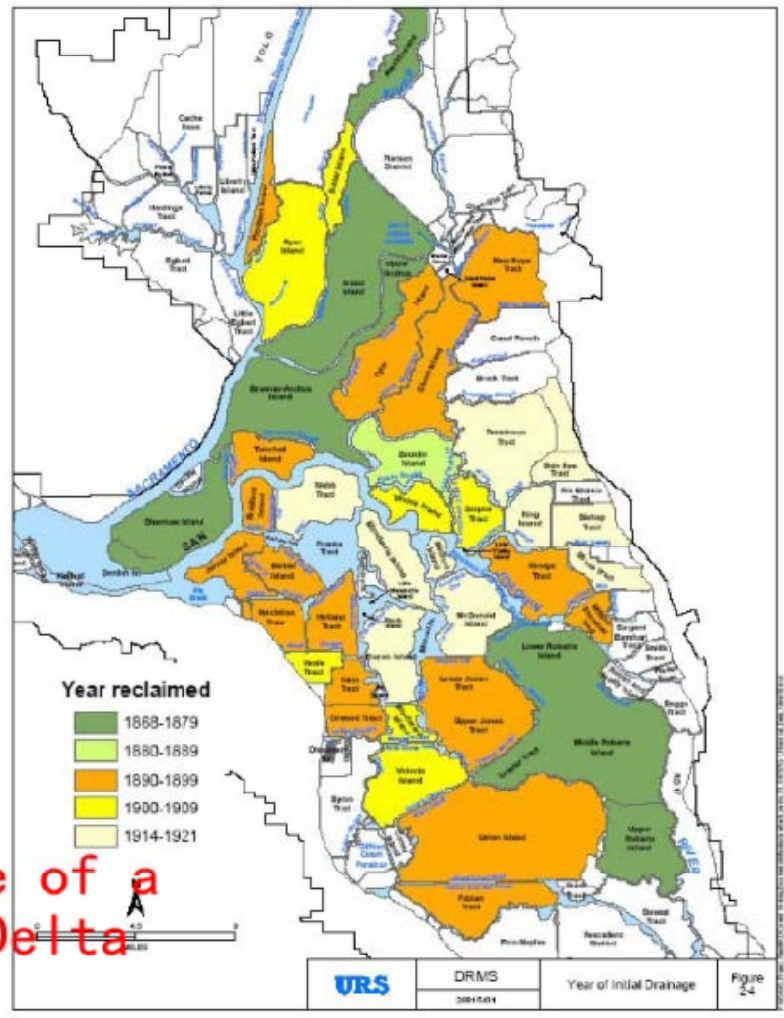
<b>Delta Primary Zone Study</b>	0 1 in = 2 mil 2
Andrus/Brannan Island Floodplain Map	Exhibit 4-8

Map below reflects incorrect island reclamation timing based on DWR past studies and the Thompson 1957 report.

# Delta Map

- Broad flat area composed of a series of more than 70 islands
- Islands are created by ring levees that enclose areas that are now often below sea level

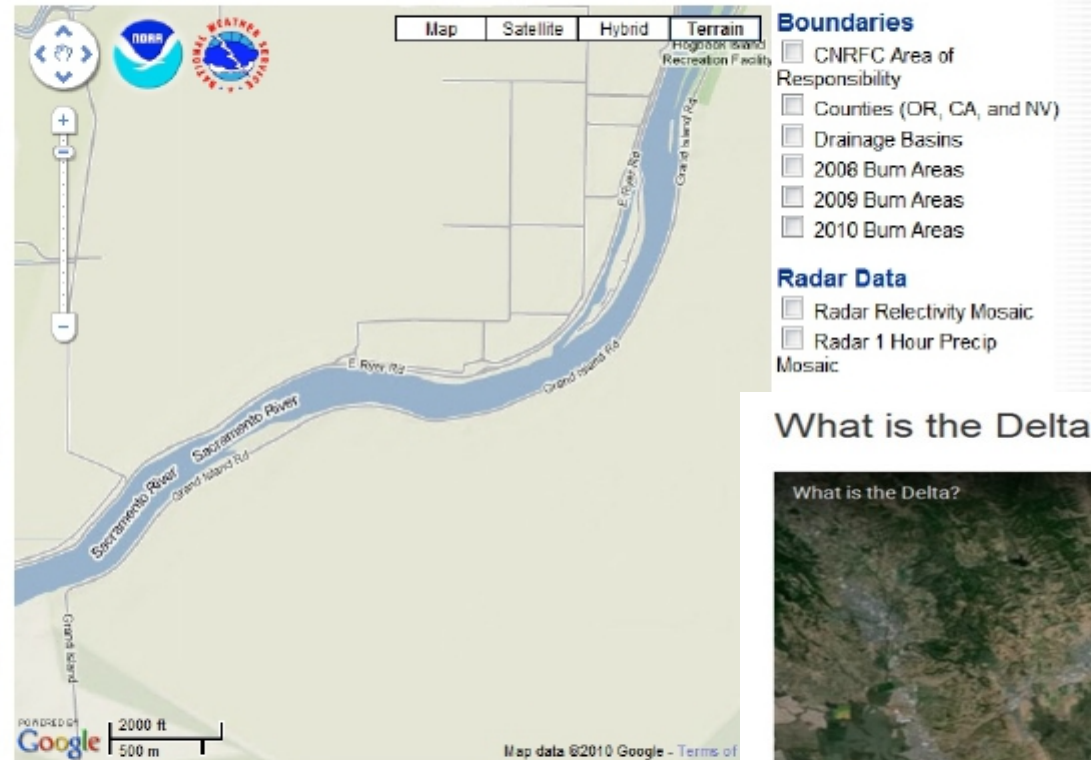
This is another example of a wrong DRMS/URS map of Delta history of reclamation



By 2014 a pattern of mistakes or incorrect data was identified for several locations in the Delta, including Ryer Island, Yolo Bypass, McCormack-Williamson Tract, and individual Delta island histories were revised as well.

# Precipitation Summary - Google™ Maps Interface

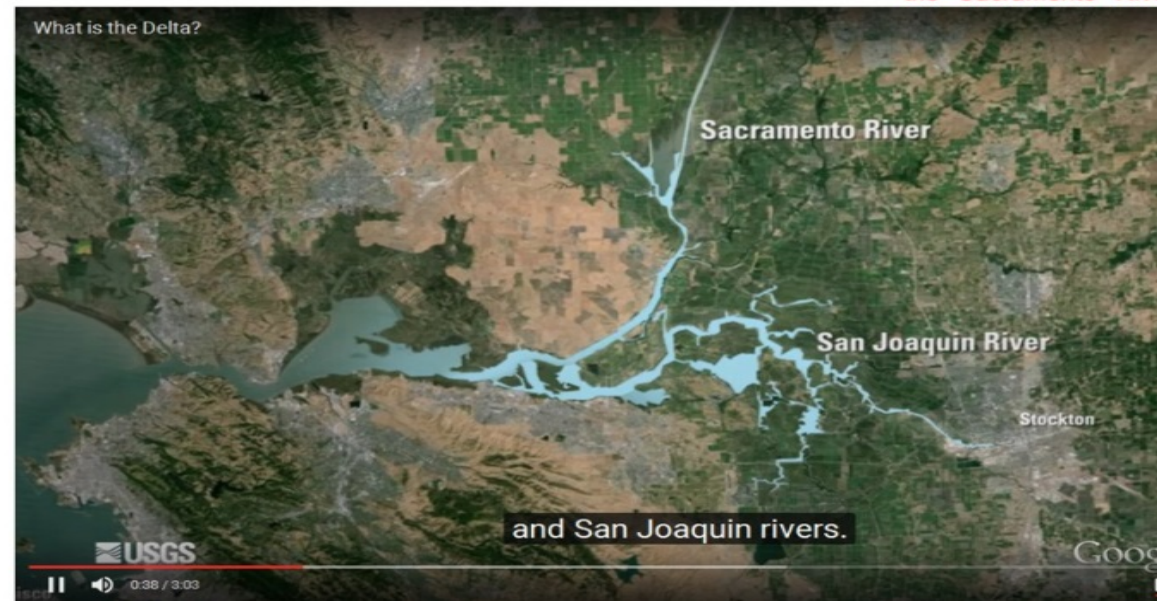
Please Note: Due to the large amounts of data being displayed on this interface, please be patient as the data is retrieved and loaded onto the Google™ Map Interface below. Data may take as long as 30 seconds to load. Firefox is the preferred browser for use.



## What is the Delta?

<https://www.usgs.gov/media/videos/what-delta>

2016 USGS changes the Sacramento River



12/20/2010 4:50 am

http://www.usace.army.mil/Library/Maps/Pages/InteractiveMaps.aspx

Interactive Maps

**US Army Corps of Engineers**  
Headquarters

ABOUT US SERVICES BUSINESS WITH US CAREERS LIBRARY PRESS ROOM CONTACT US SEARCH


Headquarters > Library > Maps > Interactive Maps

Centers of Expertise  
CorpsMap  
Interactive Maps  
Map Gallery  
National Inventory of Dams  
Navigation Charts  
Regulations and Guidance  
Spatial Data Standards

### Interactive Maps

#### Google Layer Example

Demonstrate use of the various types of Google layers.



For best performance, you must be using a version of the Google Maps API which is v2.93 or higher. In order to use this version of the API, it is best to simply set your application to use the string "v=2" in the request, rather than tying your application to an explicit version.

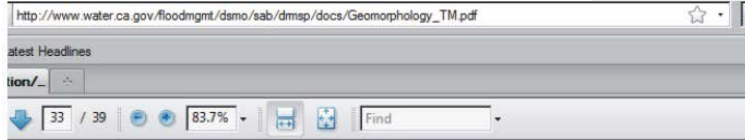
In order to position the Google attribution div in the default location, you must include the extra theme/default/google.css stylesheet.

Text Version Disclaimer Public Inquiries Privacy & Security FOIA Information Quality Act Accessibility

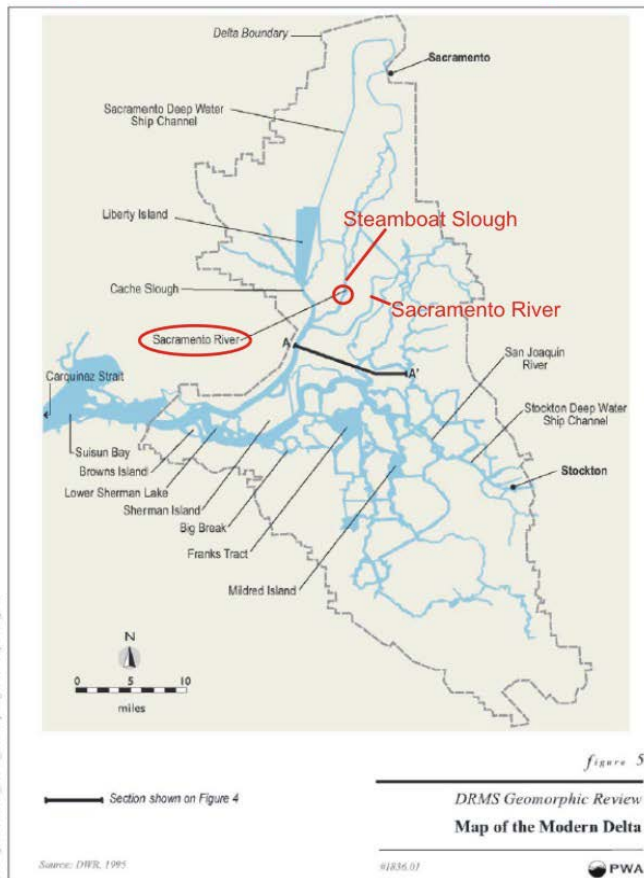
Note that the agencies all appear to use Google maps and Google has been changing the names of Delta Islands and waterways at least since 2005. USACE map lists Steamboat Slough as "Sacramento River". Well, it IS part of the Sacramento River, but since 1865 was called Steamboat Slough.

As of 11/1/2017 Google still was using wrong island names as Webb Tract was listed as "King Edward" Island, Holland Tract is listed at Bethel Island, Bethel Island and Victoria Island are not named. Liberty Island Reservoir also does not show on Google-Iphone map, but on Bing maps it does.

More location confusions



Steamboat Slough is labeled "Sacramento River" on this DRMS map



CNRF - Hydrology - Water ... x 7-Day Forecast for Latitud... x

http://forecast.weather.gov/MapClick.php?CityName=Laguna&state=CA&site=STO&textField1=38.4211&textField2=-121.1

**Your National Weather Service forecast**

## Laguna CA

Enter Your "City, ST" or zip code

NWS Sacramento, CA **Mobile Weather Information | En Español**  
**Point Forecast:** Laguna CA **Last Update:** 3:30 am PDT Jun 22, 2011  
 38.43°N 121.42°W (Elev. 23 ft) **Forecast Valid:** 6am PDT Jun 22, 2011-6pm PDT Jun 28, 2011

**Forecast at a Glance**

Today	Tonight	Thursday	Thursday Night	Friday	Friday Night	Saturday	Saturday Night	Sunday
Hot	Clear	Sunny	Clear	Sunny	Clear	Sunny	Clear	Sunny
Hi 100 °F	Lo 59 °F	Hi 91 °F	Lo 55 °F	Hi 87 °F	Lo 56 °F	Hi 88 °F	Lo 57 °F	Hi 87 °F

**We need your feedback! Take our weather survey on how satisfied you are with our products and service.**

**Detailed 7-day Forecast** **Detailed Point Forecast** [\[Move Down\]](#)

**Today:** Sunny and hot, with a high near 100. Southwest wind between 3 and 8 mph.

**Tonight:** Clear, with a low around 59. Southwest wind between 5 and 14 mph, with gusts as high as 18 mph.

**Thursday:** Sunny, with a high near 91. South southwest wind between 6 and 8 mph.

**Thursday Night:** Clear, with a low around 55. Southwest wind between 6 and 10 mph.

**Friday:** Sunny, with a high near 87. South southwest wind at 10 mph becoming west northwest.

**Friday Night:** Clear, with a low around 56.

**Saturday:** Sunny, with a high near 88.

**Saturday Night:** Clear, with a low around 57.

**Sunday:** Sunny, with a high near 87.

**Sunday Night:** Clear, with a low around 57.

**Monday:** Sunny, with a high near 87.

**Monday Night:** Mostly clear, with a low around 58.

**Tuesday:** Sunny, with a high near 80.

Click Map for Forecast [Disclaimer](#)

Map Satellite Terrain

Map data ©2011 Google - Terms of Use

Requested Location Forecast Area

**Lat/Lon:** 38.43°N 121.42°W **Elevation:** 23 ft

**Current Conditions** [\[Move Up\]](#)

**Sacramento, Sacramento Executive Airport (KSAC)**  
 Lat: 38.50694 Lon: -121.49500 Elev: 20  
 Last Update on 22 Jun 4:53 PDT

<b>Humidity:</b>	60 %
<b>Wind Speed:</b>	S 3 MPH

Fair

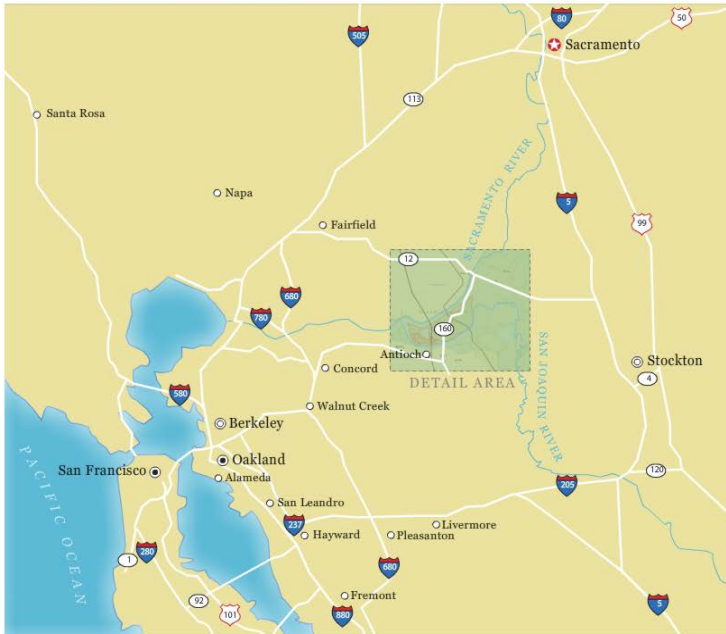


Online media, especially weather maps, start eliminating reference to the Delta, and if the rivers

delta infrastructure map

Web Images More

http://www.bing.com/images/search?q=delta+infrastructure+map&view=detail&id=CDA36906C7043843C3387D031285DA732874181&first=91&FORM=IDFRIR



The Sacramento-San Joaquin River Delta is the West Coast's largest estuary and a California hub of vital networks, including aqueducts that supply freshwater to two-thirds of state residents. The former tidal marshland was converted to farmland by settlers, but the price paid for this reclamation was subsidence of the land, and some now sit 15-20 feet below sea

Lawrence Hall of Science joins into the White House for annual Easter event  
 UC Berkeley named top public university for tuition ROI  
 Number of women deans reaches campus milestone  
 MBA students, Haas School faculty win sustainability research grants  
 Survey asks how you would improve Telegraph Avenue and downtown Berkeley

Popular Stories

Read Mailed

Campus releases 2011-12 admissions data  
 Freshman admission data 2011-12  
 Distinguished Teaching Awards to faculty trio  
 Prenatal pesticide exposure tied to lower IQ in children  
 Hiring surge to bring more recruiters to campus job fair

Tags  
 administration

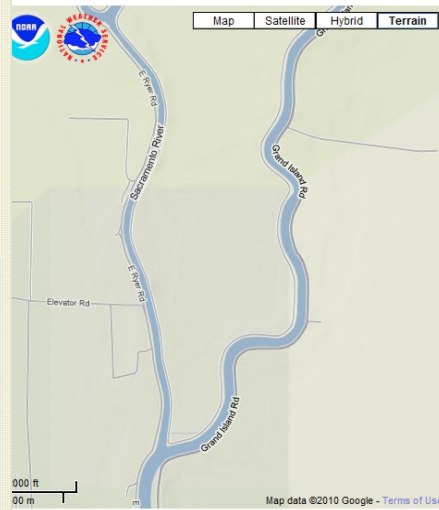
Links  
 CNRFC Mobile  
 Web  
 RFC Map

National Weather Service  
 California Nevada  
 River Forecast Center

Organization Frequently Asked Questions Search

Information Summary - Google™ Maps Interface

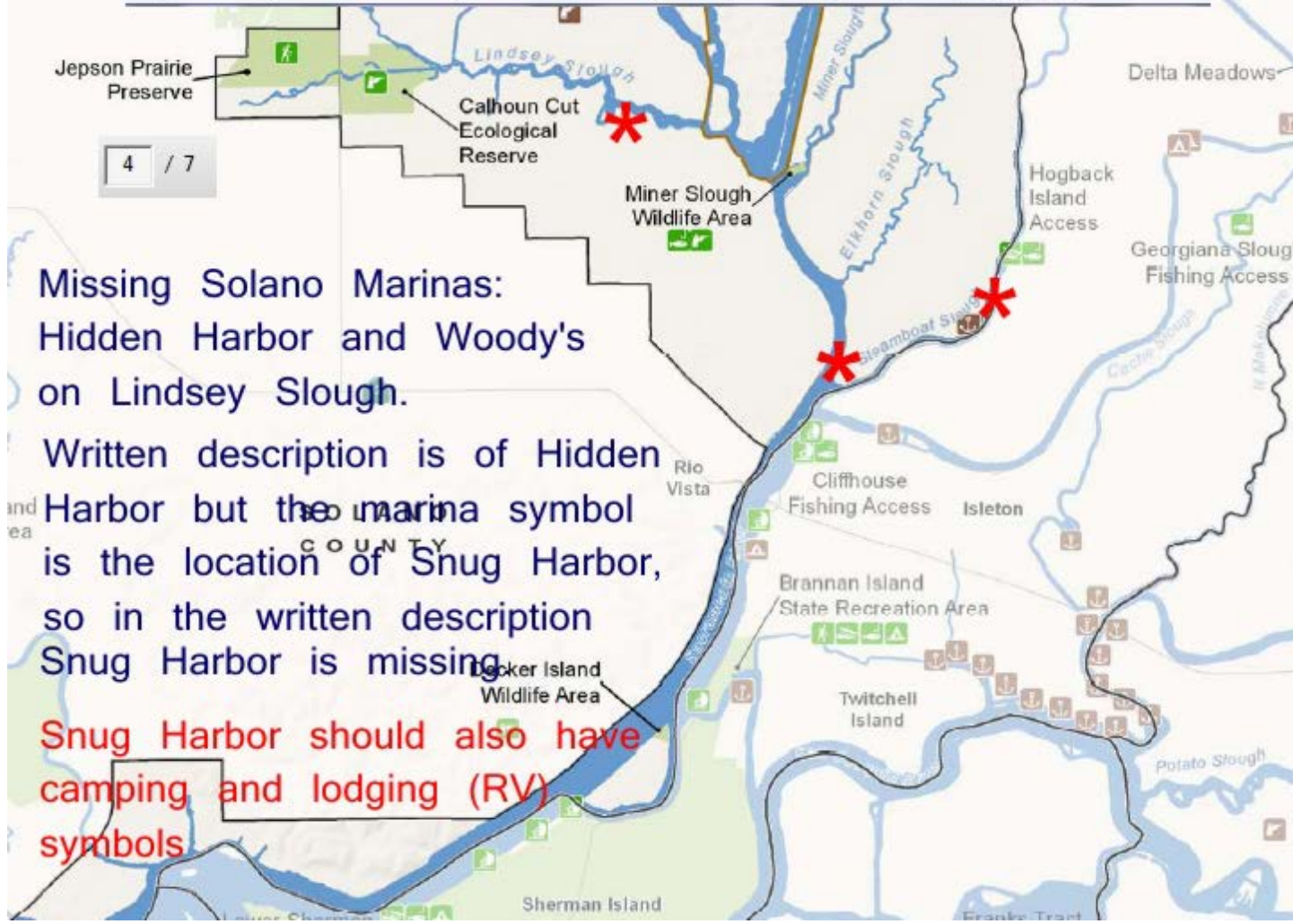
Due to the large amounts of data being displayed on this interface, please be patient as the data is loaded onto the Google™ Map Interface below. Data may take as long as 30 seconds to load. Firefox is browser for use.



- Boundaries**
- CNRFC Area of Responsibility
  - Counties (OR, CA, and NV)
  - Drainage Basins
  - 2008 Burn Areas
  - 2009 Burn Areas
  - 2010 Burn Areas
- Radar Data**
- Radar Relectivity Mosaic
  - Radar 1 Hour Precip Mosaic
- Data Selection**
- 1 Hour Precipitation Totals
  - 2 Hour Precipitation Totals
  - 3 Hour Precipitation Totals
  - 6 Hour Precipitation Totals
  - 12 Hour Precipitation Totals
  - 24 Hour Precipitation Totals
  - 48 Hour Precipitation Totals
  - 6 Hour Precipitation Totals (Ending 18 UTC/10 AM PDT)
  - 6 Hour Precipitation Totals (Ending 00 UTC/4 PM PDT)
  - 6 Hour Precipitation Totals (Ending 06 UTC/10 PM PDT)
  - 6 Hour Precipitation Totals (Ending 12 UTC/4 AM PDT)
  - 24 Hour Precipitation Totals (Ending 12 UTC/4 AM PST)

**Intentional misrepresentation of a material fact:**

[http://www.baydeltaconservationplan.com/Libraries/Dynamic\\_Document\\_Library/Chapter\\_15\\_-\\_Figures.sflb.ashx](http://www.baydeltaconservationplan.com/Libraries/Dynamic_Document_Library/Chapter_15_-_Figures.sflb.ashx)





When CalTrans publishes detour maps that omit major travel routes in the North Delta, it makes it hard for travelers to find their way around. Limiting the ferry to crossing only every 20 minutes can create quite a traffic backup at the ferry landings unnecessarily.



One fun way to wait for the Rio Vista Ferry...  
Hitting golf balls into the Sacramento River!

nationalatlas.gov 2/27/2012

U.S. Census Bureau  
American FactFinder

**Thematic Maps**  
You are here: Main ▶ Data Sets ▶ Data Sets with Thematic Maps ▶ Geography ▶ Themes ▶ Results

Change...  
• Data Classes  
• Boundaries and features

Reposition on...  
• A street address or ZIP code  
• A latitude and longitude  
• The selected geography

**TM-M1. Total Persons: 2009**  
Universe: Total population  
Data Set: 2009 Population Estimates  
United States by State

NOTE: For information on errors stemming from model error, sampling error, and nonsampling error, see: <http://www.census.gov/popest/topics/methodology>.

Click map to: 2.8 miles across

http://maps.google.com/maps?ll=38.170869,-121.170869

Google Maps

Search the map Find businesses

**Data Classes**

Total Persons
544270 - 2009671
2643085 - 5266214
5654774 - 9969727
111542645 - 19541453
24782302 - 36961664

**Features**

- Major Road
- Street
- Stream/Waterbody
- Stream/Waterbody

Approx. 2.8 miles across.

http://nationalatlas.gov/mapmaker

Missing Delta waterways:  
Miner's Slough, Sutter Slough,  
Gegrigiana Slough, Snodgrass  
Slough, and the whole Meadows  
Area, Three Mile Slough and more

Search Results My Maps

New! Experience the [Tour de France](#) from a 360-degree view.

**Browse popular maps**  
[US Themepark Map](#)  
[Popular user-created maps](#)  
[See more maps](#)

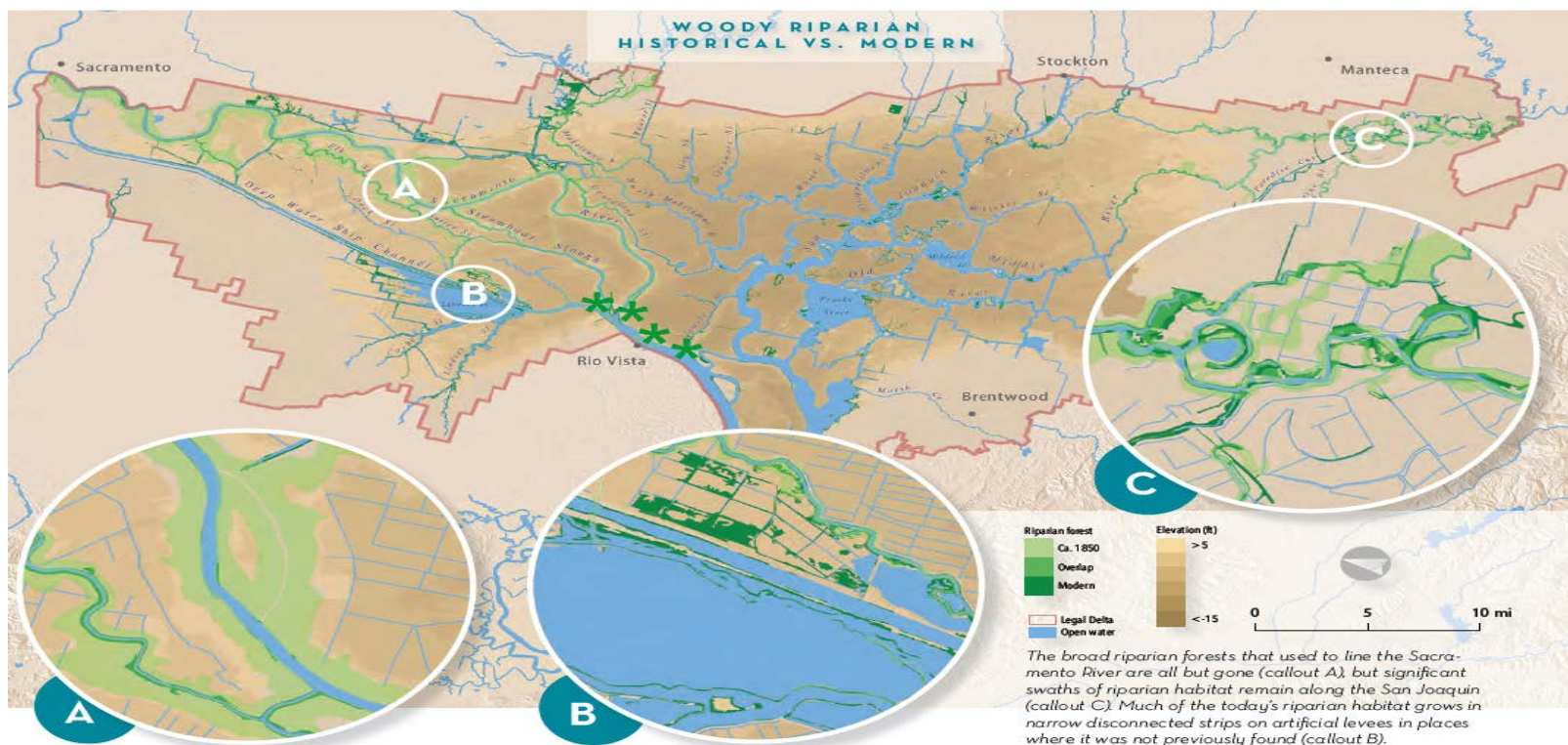
Put your business on Google Maps  
Display your ads on Google Maps

Street View Traffic More... Map Satellite Terrain

Liberty Island Five Points Sutter Island  
Prospect Island Varden  
Tyler Island Howard Landing Ryde  
Walker Landing Grand Island  
Andrus Island  
Staten Island  
Eagle Tree

©2008 Google - Map data ©2008 NAVTEQ™ - Terms of Use

in 2008 Google called Ryer Island  
Tyler Island instead



Delta “forests” of oak, sycamore and willow historically included areas like Wood Island across from Rio Vista on the Sacramento River, and the banks of Brannan Island and Grand Island and Ryer Island. Map drafter seems to have forgotten about places like Wood Island when drawing historical map references.

message detail

**Subject:** Caltrans Advisory-J-Mack Closed Overnight Solano Co. 8-2-12  
**From:** Vince Jacala <vince\_jacala@dot.ca.gov> (Add as Preferred Sender)  
**Date:** Thu, Aug 02, 2012 4:08 pm  
**To:** Undisclosed recipients;

suspend service of the J-Mack Ferry tonight to perform necessary preventive maintenance. The J-Mack is scheduled to be closed tonight, August 2nd at 9 p.m. until the morning of Friday, August 3rd at 4 a.m.

The J-Mack, also known as the Steamboat Slough Ferry, provides around the clock service on State Route 220 between Ryer Island in Solano County and Grand Island in Sacramento County. Caltrans scheduled repairs for tonight to minimize service disruption to motorists.

#### J-Mack Ferry Detour

During the overnight service interruption, motorists are advised to use the Miner's Slough Bridge. The Real McCoy Ferry, also known as the Cache Slough Ferry is also currently operating as scheduled.

For the latest information, motorists can also call the Caltrans Ryer Island Ferry Update Line at (510) 622-0120.

You can also find more Ferry information on the Caltrans Delta Ferry website at: <http://www.dot.ca.gov/dist4/deltaferries/>

Email refers to a link that is supposed to provide updates on the ferries. Yet there is no mention of the closure of the J-Mac nor if the Real McCoy II was working again after CalTrans had sent earlier notice that a repair was needed.

In any case, the J-Mac was back in service by early the next morning.

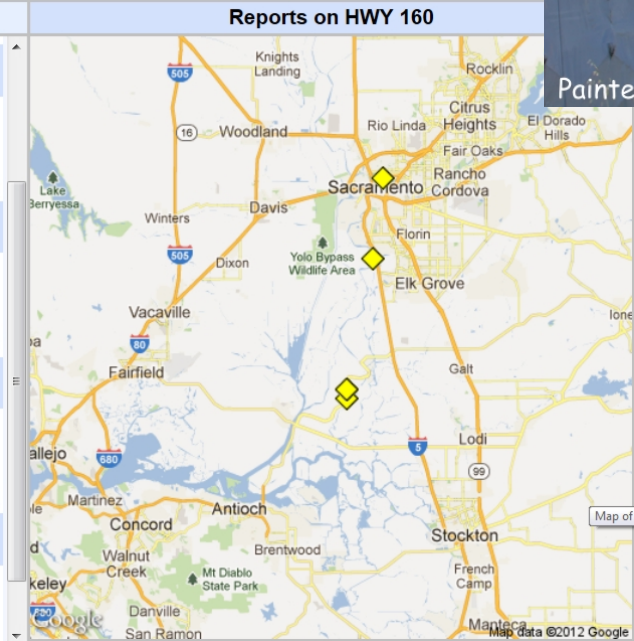
The screenshot shows the website for the California Department of Transportation District 4. The main heading is "California Department of Transportation District 4". Below this is a navigation menu with links for "Business", "Projects", "Engineering", "News Releases", "Maps", "Jobs", "About District 4", and "Contact Us". A search bar is located in the top right corner. The main content area is titled "Delta Ferries" and features a large image of a ferry. To the right of the image is a section titled "UPDATES" with a list of recent events: "7/13/12 - Real McCoy Ferry Scheduled Maintenance | DETOUR MAP", "7/8/12 - Real McCoy II Ferry Closed For Overnight Maintenance One Night Closure On Sunday, July 8th", "6/23/12 - Real McCoy II Ferry Closed For Overnight Maintenance One Night Closure This Saturday", and "5/29/12 - Real McCoy II Ferry Maintenance Service Disruption Scheduled June 1st and June 2nd". Below the updates is a "Ferry Update Line" section with a text box and a "Search" button. At the bottom of the page, there is a Caltrans logo and a statement: "Caltrans operates two ferries in the Sacramento Delta Region, The Real McCoy II and the J-Mack. Both ferries operate 24/7 and are free of charge."

Text Size **AAA** Text Only

[Menu](#) | [Road Reports](#)

**Reports on HWY 160**

- ◆ HWY 160 in both directions: Long term road construction.**  
 Between HWY 12 and HWY 220 (2 miles west of the Walnut Grove area). Look out for long term road construction work.  
[More](#)
- ◆ HWY 160 in both directions: Long term road construction.**  
 Between HWY 12 and HWY 220 (2 miles west of the Walnut Grove area). Look out for long term road construction work.  
[More](#)
- ◆ HWY 160 westbound: Long term road construction.**  
 Between Hood Franklin Road and Freeport Bridge (near Sacramento). Look out for long term road construction work.  
[More](#)
- ◆ HWY 160 eastbound: Long term road construction.**  
 Between 16 TH ST and NORTHGATE BLVD (Sacramento). Look out for long term road construction work.



Paintersville Bridge at Courtland being painted spring 2012

**Caltrans QuickMap**

Share Locate

SR 84  
 [IN THE CENTRAL CALIFORNIA AREA]  
 1-WAY CONTROLLED TRAFFIC 7 MI NORTH OF THE SOLANO/YOLO CO LINE  
 /AT HAMILTON RD/ FROM 0700 HRS TO 1700 HRS TUESDAY THRU FRIDAY THRU  
 6/1/12 - DUE TO CONSTRUCTION

- Cameras
- Chain Controls

**Zoom to...**

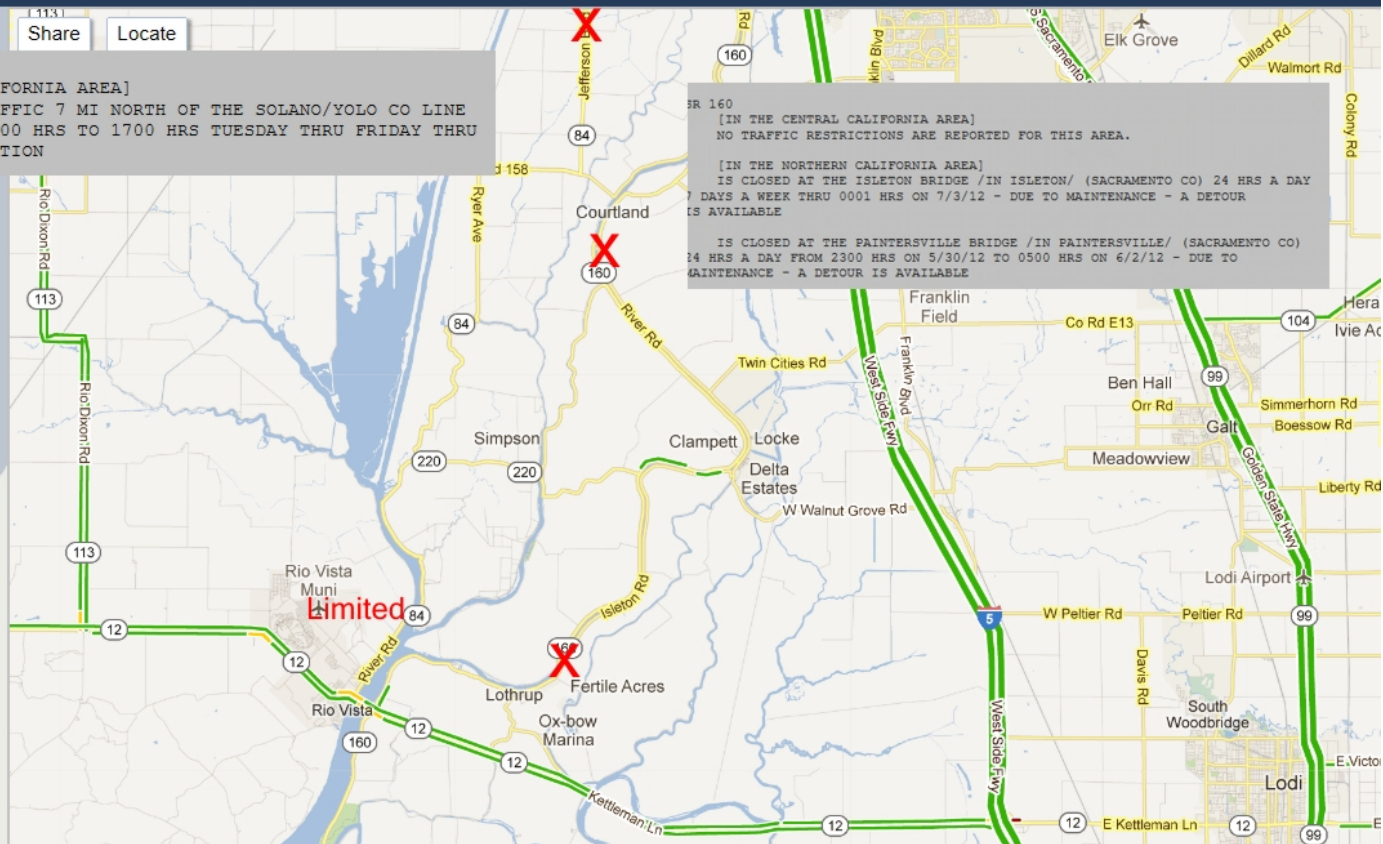
- Redding
- Sacramento
- San Francisco
- Central Valley
- Los Angeles
- San Diego

→ [Planned Lane Closures](#)

To check conditions, enter  
 highway #    
 Or call: 1-800.427.7623

**Regional 511 Sites**

- Sacramento
- SF Bay Area
- San Luis Obispo
- San Joaquin Valley



SR 160  
 [IN THE CENTRAL CALIFORNIA AREA]  
 NO TRAFFIC RESTRICTIONS ARE REPORTED FOR THIS AREA.

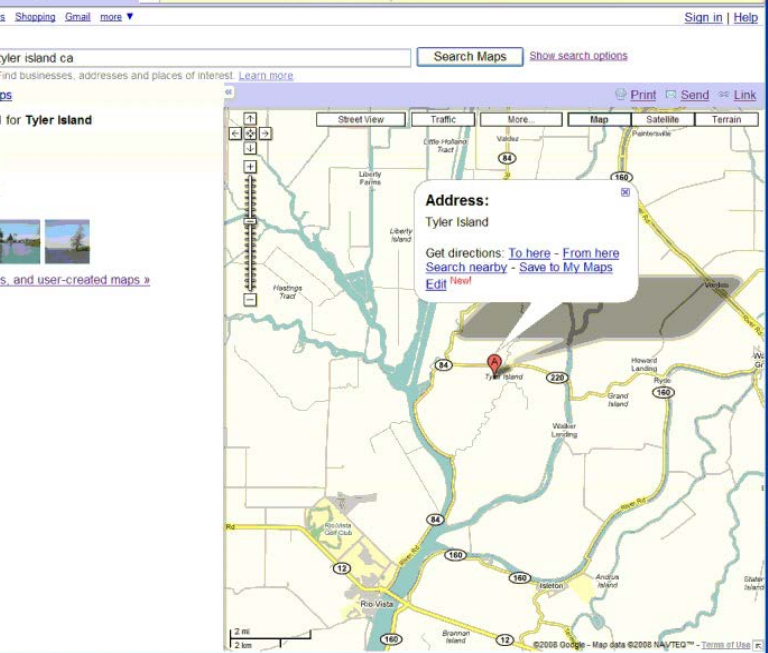
[IN THE NORTHERN CALIFORNIA AREA]  
 IS CLOSED AT THE ISLETON BRIDGE /IN ISLETON/ (SACRAMENTO CO) 24 HRS A DAY  
 7 DAYS A WEEK THRU 0001 HRS ON 7/3/12 - DUE TO MAINTENANCE - A DETOUR  
 IS AVAILABLE

IS CLOSED AT THE PAINTERSVILLE BRIDGE /IN PAINTERSVILLE/ (SACRAMENTO CO)  
 24 HRS A DAY FROM 2300 HRS ON 5/30/12 TO 0500 HRS ON 6/2/12 - DUE TO  
 MAINTENANCE - A DETOUR IS AVAILABLE





Listing the Real Ryer Island as "Tyler" Island



This is Brannan Island  
State Park, not the  
Dutta Meadows!

- FAQ Miscellaneous
- Weather

### CURRENT CONDITIONS

- Area Maps
- Highway Tables
- Mountain Highways
- List of Current Conditions
- Time and Date of Last Highway Update

### FREEWAY SPEED SENSORS

- San Diego

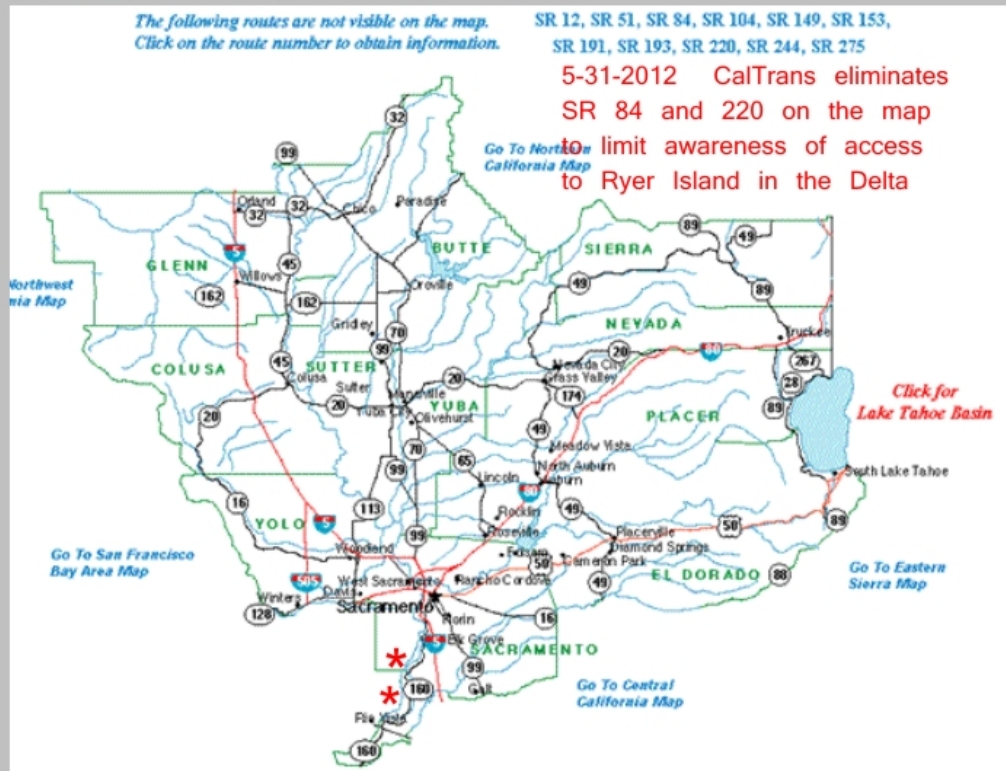
### AREA MAPS

- 1. Northwest
- 2. Northern
- 3. North Central
- 4. Bay Area
- 5. Central Coast
- 6. South Central
- 7. Los Angeles
- 8. Inland Empire
- 9. Eastern Sierra
- 10. Central
- 11. San Diego

## Road Information - Area Maps - Caltrans District Three (North Central California)

Before driving, check with the Caltrans Highway Information Network (CHIN) **800.427.7623**

View a larger map <http://www.dot.ca.gov/hq/roadinfo/do3map.htm>



## CURRENT CONDITIONS

- Area Maps
- Highway Tables
- Mountain Highways
- List of Current Conditions
- Time and Date of Last Highway Update

## FREEWAY SPEED SENSORS

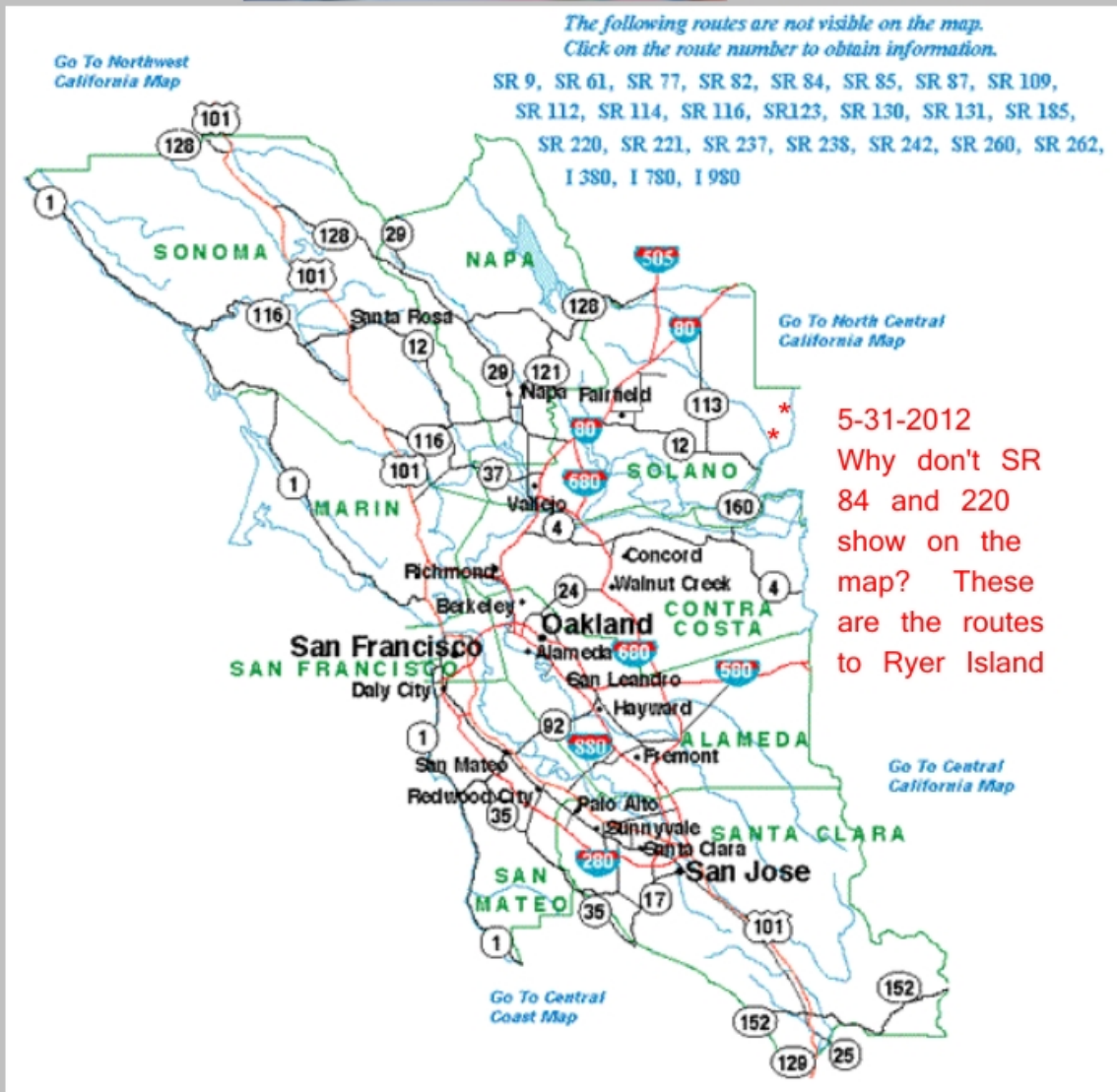
- San Diego

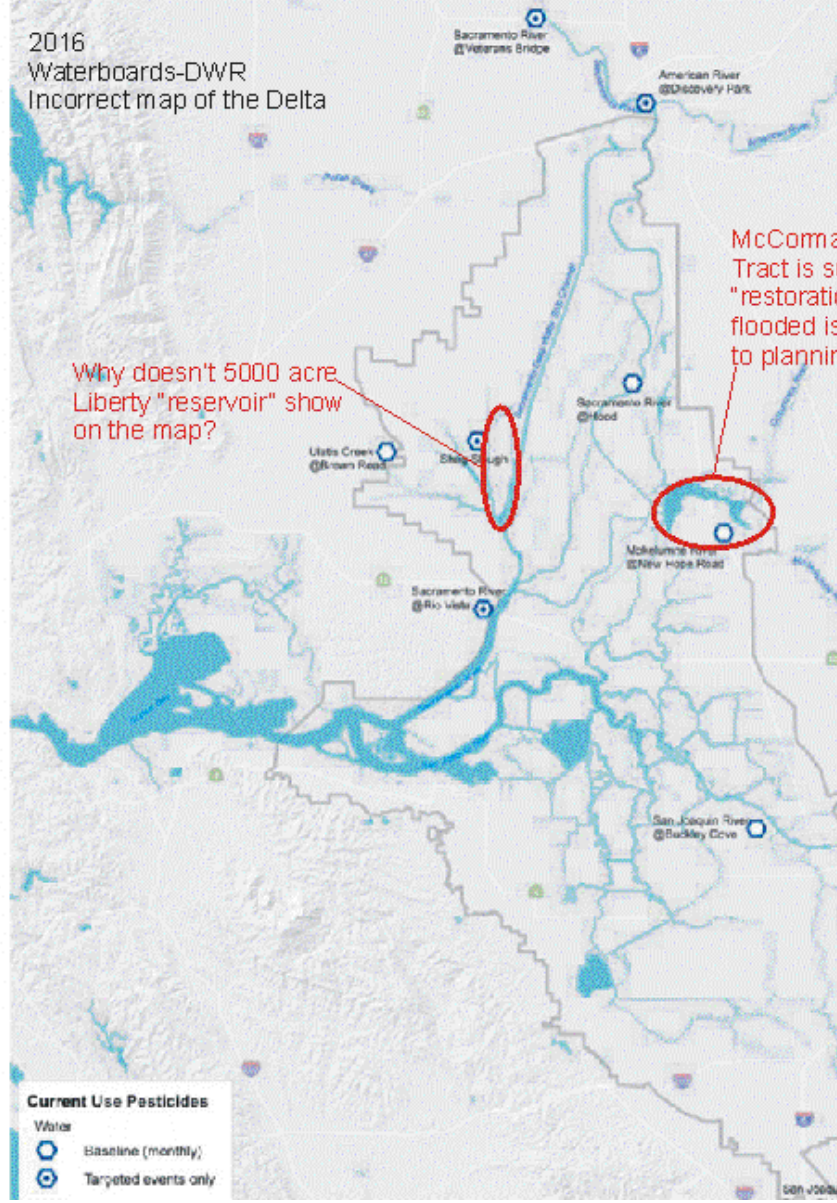
## AREA MAPS

1. Northwest
2. Northern
3. North Central
4. Bay Area
5. Central Coast
6. South Central
7. Los Angeles
8. Inland Empire
9. Eastern Sierra
10. Central
11. San Diego
12. Orange Co.

[View a larger map](#)

<http://www.dot.ca.gov/hq/roadinfo/do4map.htm>





National Atlas.gov makes the Sacramento River look like a little channel; same for Steamboat Slough and Sacramento Ship channel. Is this the future of the region that used to be referred to as the Delta?



U.S. Census Bureau  
American FactFinder

Main Search Feedback FAQs Glossary Site Map

Thematic Maps

You are here: Main > Data Sets > Data Sets with Thematic Maps > Geography > Themes > Results

Change...

- Data Classes
- Boundaries and features

Reposition on...

- A street address or ZIP code
- A latitude and longitude
- The selected geography

Quick tips

Legend

Data Classes

- Total Persons
- 544270 - 2009671
- 2643085 - 5266214
- 5654774 - 9969727
- 11542645 - 19541453
- 24782302 - 36961664

Features

- Major Road
- Street
- Stream/Waterbody
- Stream/Waterbody

TM-M1. Total Persons: 2009  
Universe: Total population  
Data Set: 2009 Population Estimates  
United States by State

NOTE: For information on errors stemming from model error, sampling error, and nonsampling error, see: <http://www.census.gov/popest/topics/methodology>

Click map to: Zoom:  /  1.1 miles U.S.

Display map by: State

37 / 67 Wa

Take note  
found in  
the North  
Slough,  
Slough...

2010 Google calls  
Steamboat Slough  
the Sacramento  
River

← Upstream Gauge

Flood Categories (in feet)

Major Flood Stage:	21.4
Moderate Flood Stage:	20.4
Flood Stage:	11.9
Action Stage:	7.4

Historical Crests

Low Water Records

Currently none available.

Map Satellite Terrain

Map data ©2010 Google - Terms of Use

Legend

Gauge Location

Disclaimer

Net Delta

Contra Costa

Calaveras

Banks

Tracy

San Joaquin

Stanislaus

Tuolumne

The northern section of Steamboat Slough has been eliminated, Elk Slough is connected with Elkhorn Slough and Miner's Slough is gone.

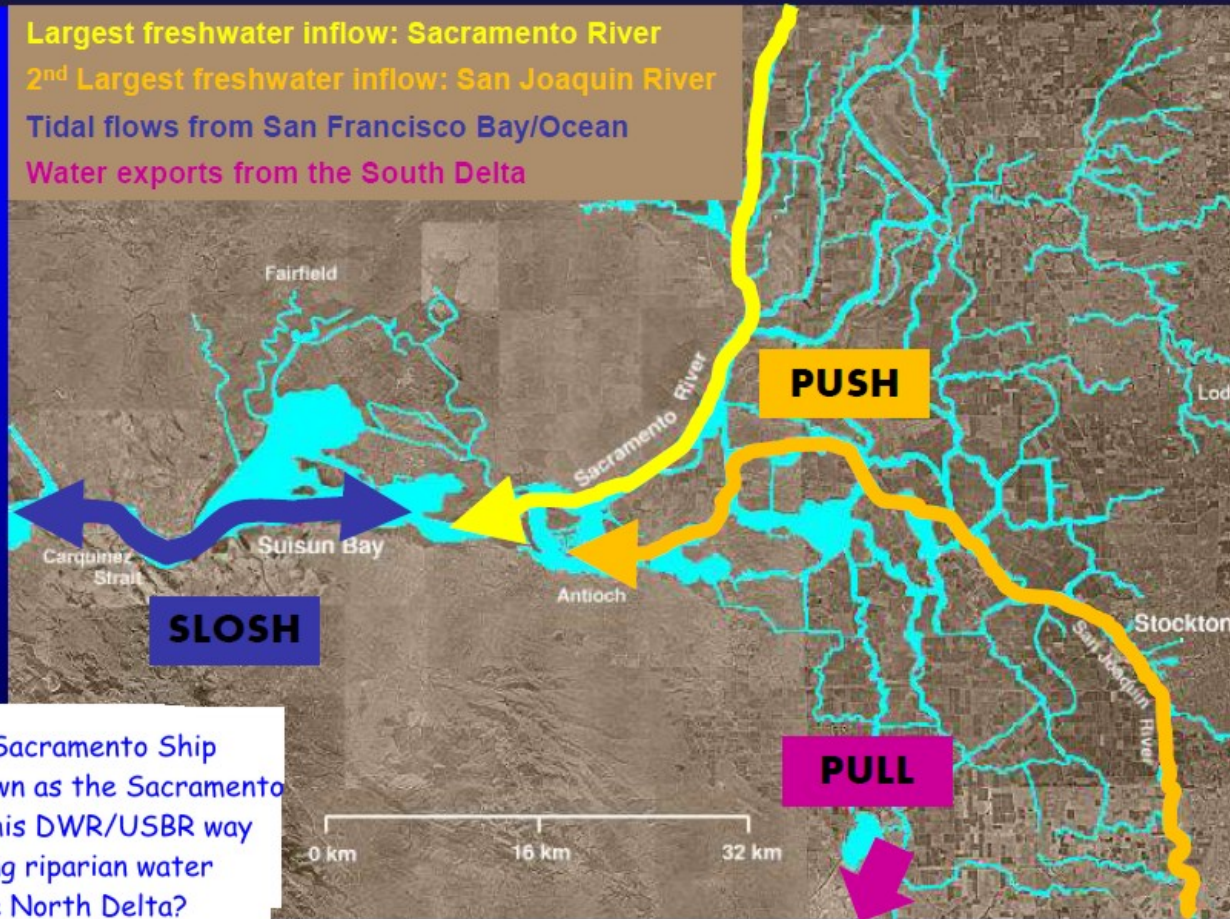
[http://www.water.ca.gov/floodmgmt/dsmo/sab/drmsp/docs/WaterAnalysis\\_ITF.pdf](http://www.water.ca.gov/floodmgmt/dsmo/sab/drmsp/docs/WaterAnalysis_ITF.pdf)

Figure B1: WAM Submodels Data Exchange Points

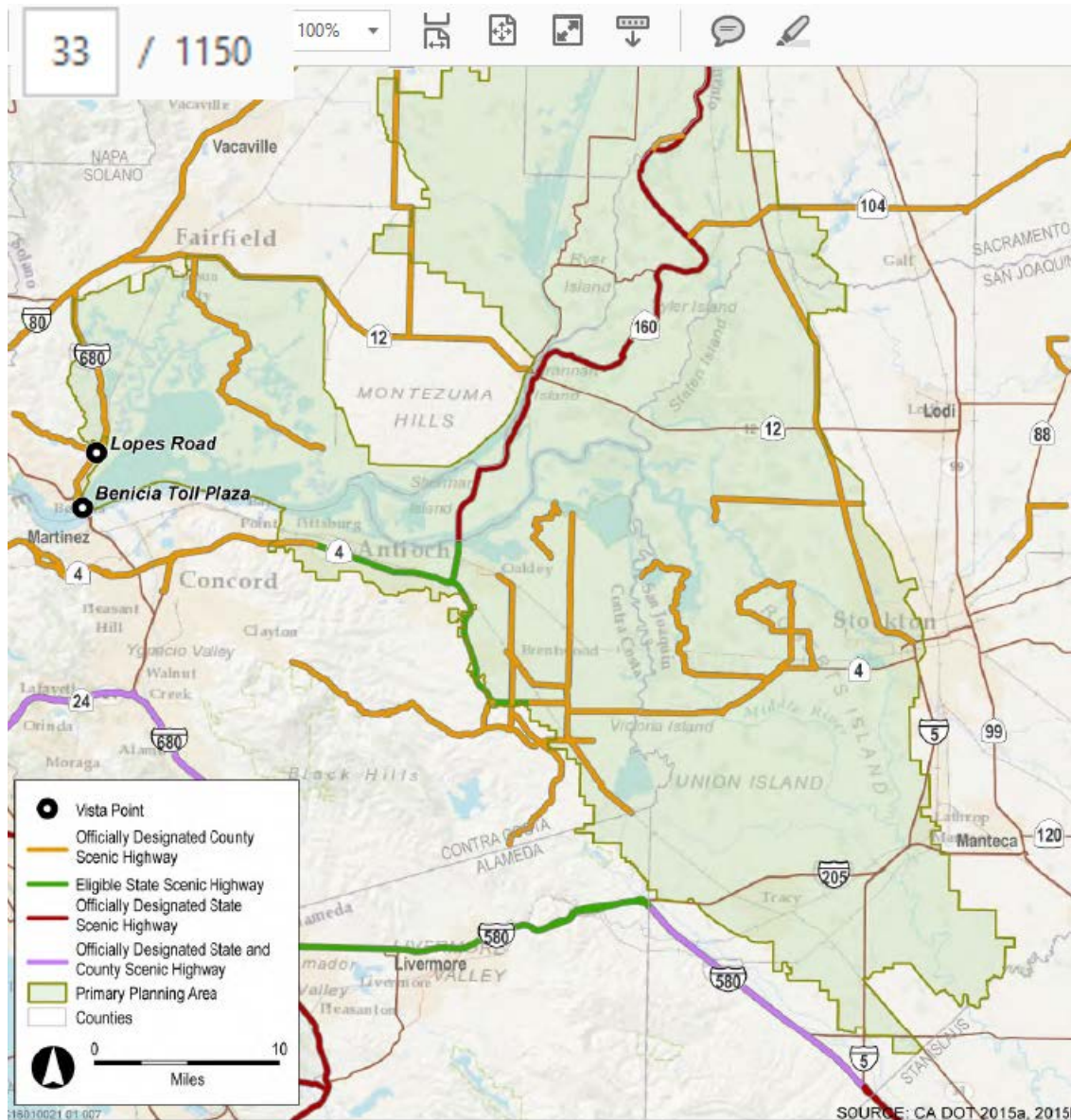
X:\x\_geo\DWR-RISK-2005\workshop\Water Management\Final ITF\Water analysis module ITF paper (Rev C 09-07-06).doc

# The Delta is a **maze** of channels that flow into San Francisco Bay

Largest freshwater inflow: Sacramento River  
2<sup>nd</sup> Largest freshwater inflow: San Joaquin River  
Tidal flows from San Francisco Bay/Ocean  
Water exports from the South Delta



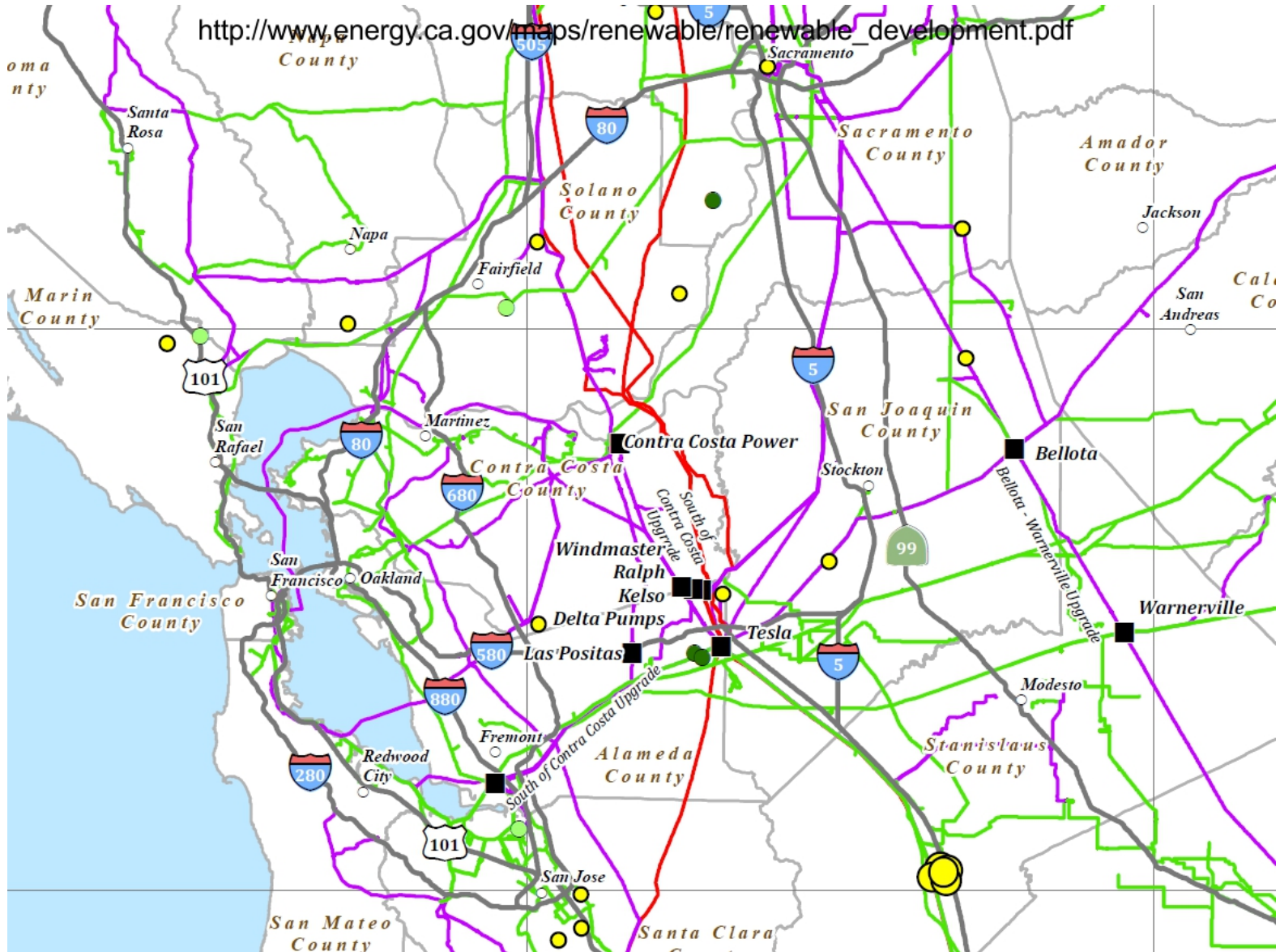
Why is the Sacramento Ship Channel shown as the Sacramento River? Is this DWR/USBR way of eliminating riparian water rights in the North Delta?



Basemap from ca.dot.gov or CalTrans. Note how most of the waterways of the Delta are eliminated on this map, yet the very reason the roads are designated as “scenic” is because of the views of the Delta waterways.

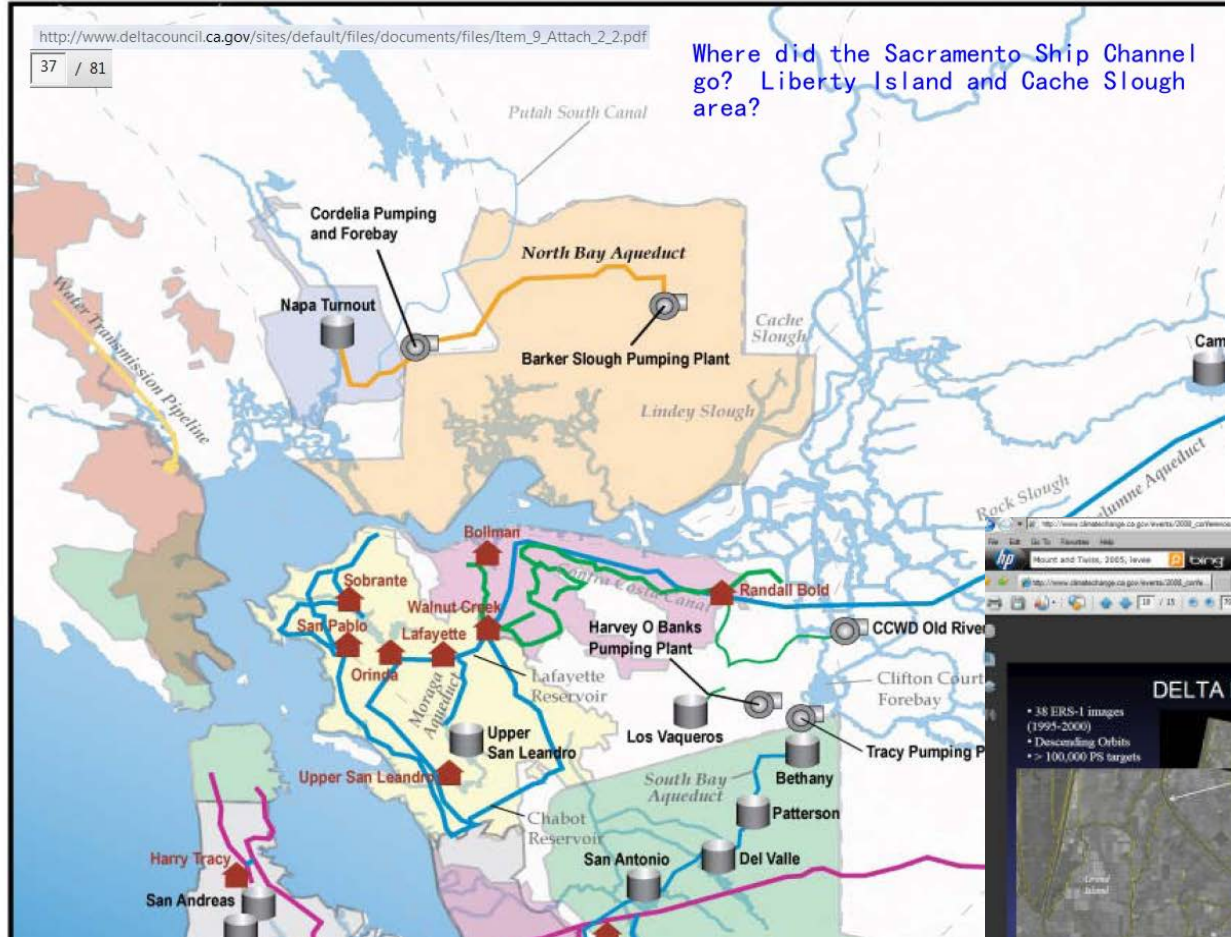
Energy.ca.gov eliminates the rivers in California entirely, even though a large portion of energy comes from the dams and river flows! This map shows newly approved energy projects including a solar project for Ryer Island?

[http://www.energy.ca.gov/maps/renewable/renewable\\_development.pdf](http://www.energy.ca.gov/maps/renewable/renewable_development.pdf)





Existing San Francisco Bay Area Water Supply Facilities  
 Source: BAWAC, 2006a



Where did the Sacramento Ship Channel go? Liberty Island and Cache Slough area?



UC Davis professor presentation using wrong island names