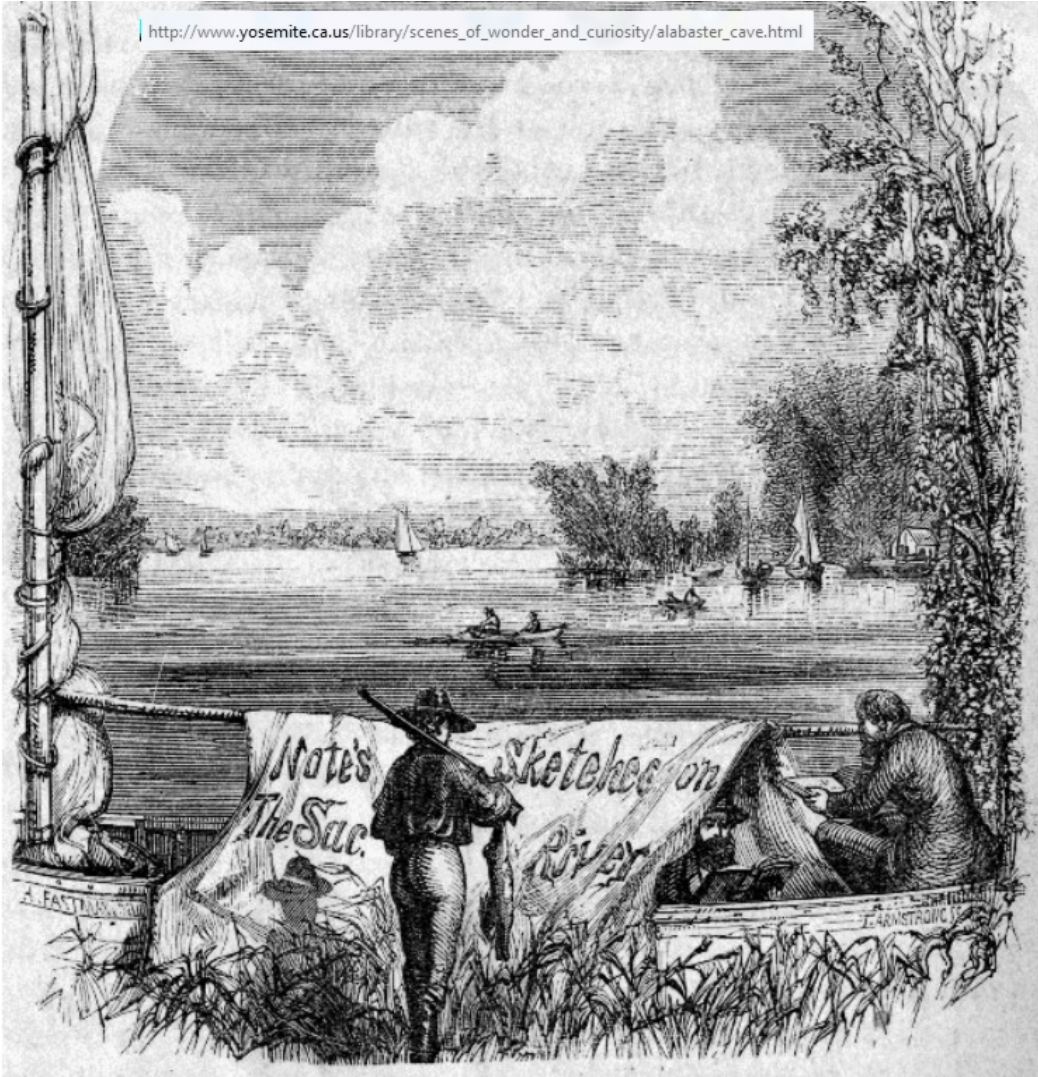


Historical Woody forests of the Delta SHR-2-256



SCENE AT THE LOWER JUNCTION OF THE MAIN SACRAMENTO RIVER, AND STEAMBOAT SLOUGH.

outlets of all the large sloughs. or at least two of the largest. Steamboat and Cache Creek sloughs—miti

1865 Map showing Island names and Waterway names



Steamboat Slough

Sutter Island

Taylor Island

Old River (Sacramento)



Photo found at Rio Vista Museum: not date for when photo was taken showing Wood Island, but it was before the USACE removal of Wood Island in early 1900s.

CALIFORNIA

BY

CADWALADER RINGGOLD

COMMANDER, U. S. NAVY

Assisted by

EDWIN CULLBERG, LIEUT. of the HYDROTECHNIC CORPS

SWEDISH NAVY

and

T. A. EMMET, CIVIL ENGINEER

1850

Projected, Constructed & Drawn
by
Fred. D. Stuart, Hydrographer, late of the U. S. Ex. Ex.
assisted by
A. H. Campbell, Civil Engineer



Edwin Cullberg

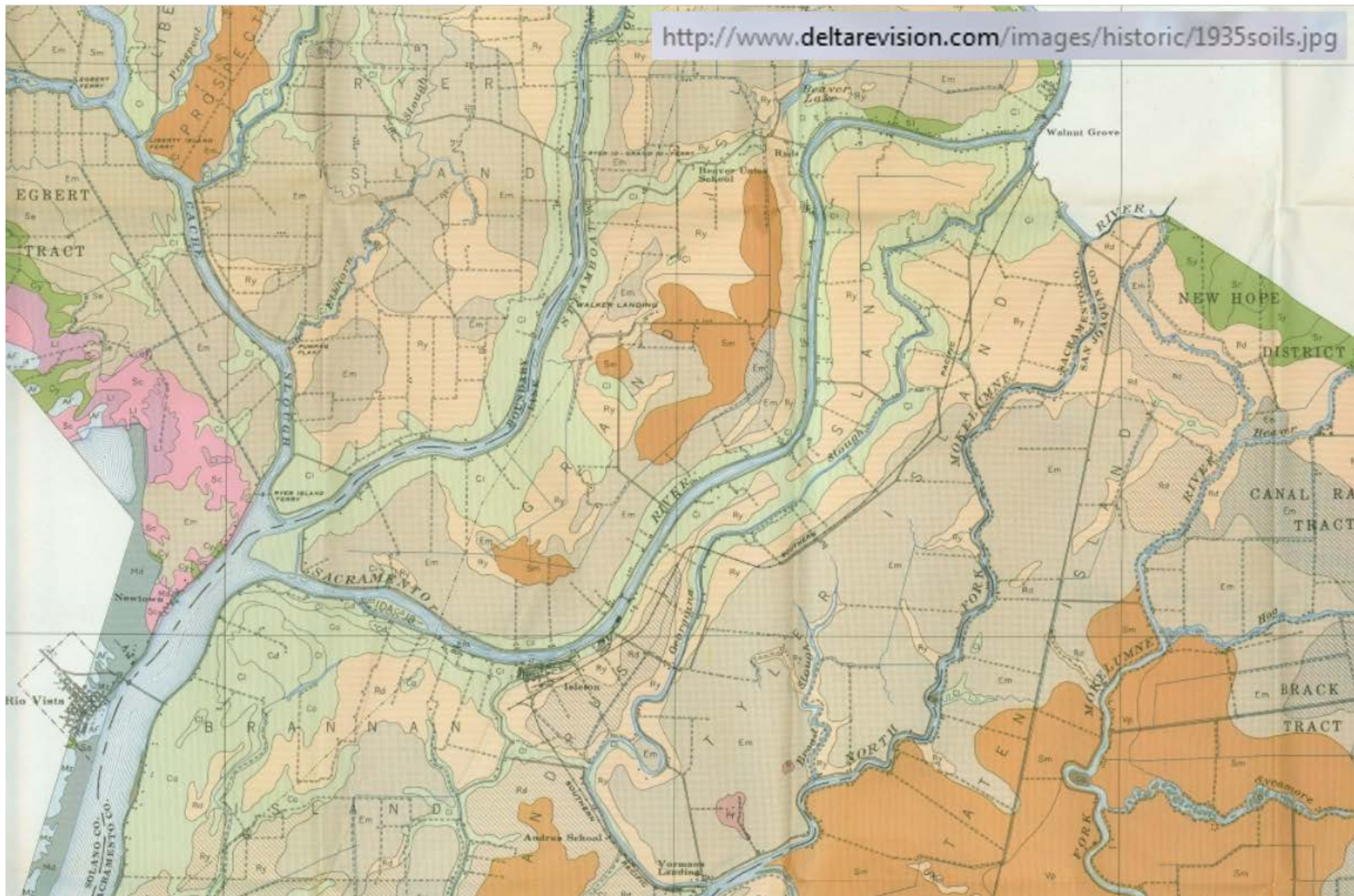
West Fork

Middle Fork

Sacramento River

A. H. Campbell

Marks for entering the Sacramento and its Forks at their confluence



See SHR-2-220 for full 1935 map

SOIL MAP

SACRAMENTO-SAN JOAQUIN DELTA AREA
CALIFORNIA

U. S. DEPARTMENT OF AGRICULTURE
BUREAU OF CHEMISTRY AND SOILS
HENRY G. KNIGHT, CHIEF
SOIL SURVEY DIVISION, CHARLES E. KELLOGG, CHIEF

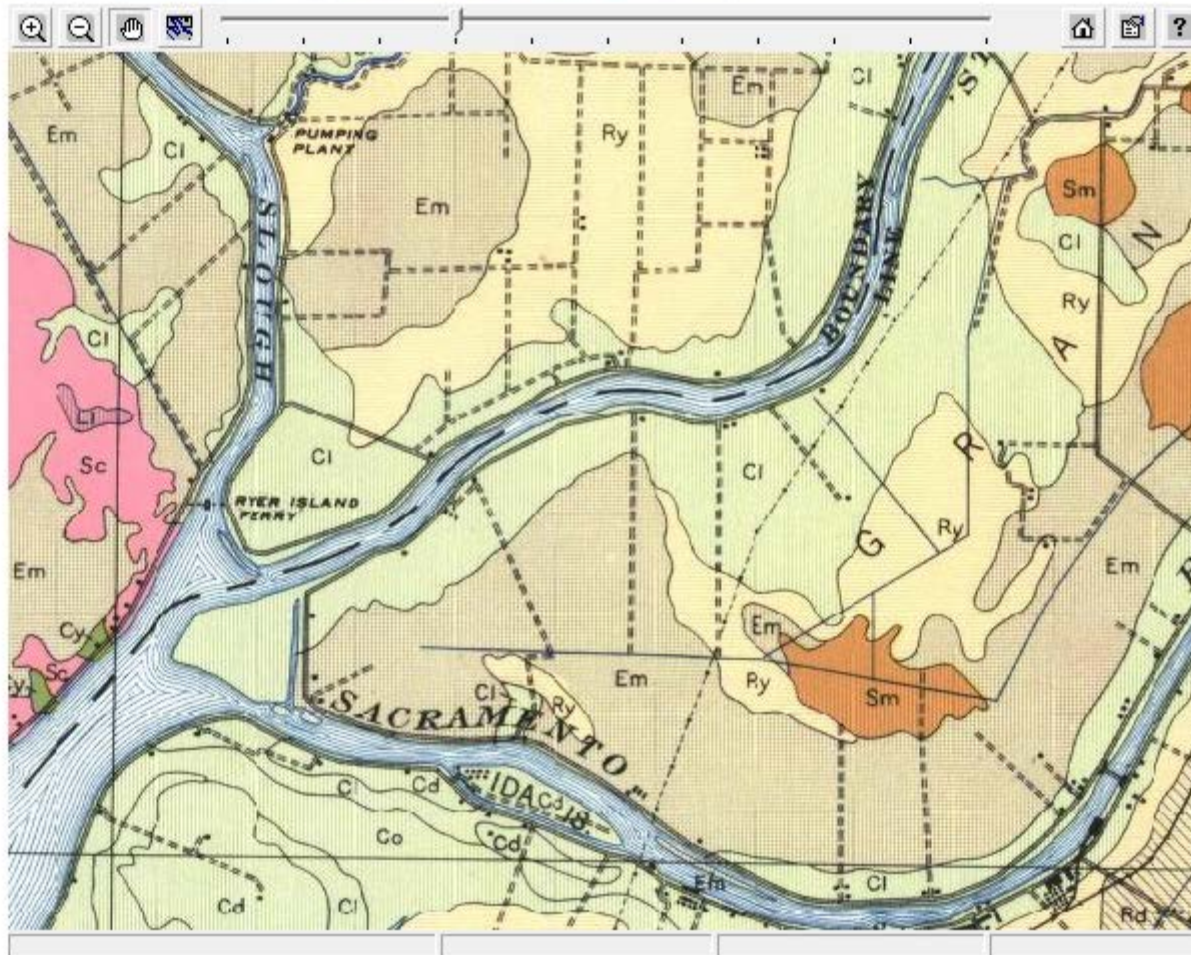
UNIVERSITY OF CALIFORNIA
AGRICULTURAL EXPERIMENT STATION
C. B. HUTCHISON, DIRECTOR
CHARLES F. SHAW, IN CHARGE SOIL SURVEY

Field Operations
Bureau of Chemistry and Soils
1935

ALLUVIAL SOILS	
WELL-DRAINED (fruit, general and special crops)	Columbia sandy loam Cd
	Columbia loam Cm
	Columbia silty clay loam Cl
	Columbia silty clay Co
IMPERFECTLY DRAINED (General and special crops, some fruit)	Clear Lake adobe clay Cy
	Sacramento loam Sr
	Sacramento clay loam Sl
	Sacramento silty clay loam Sy
	Sacramento adobe clay



Soil survey of the island that became the Snug Harbor peninsula. Soil type is Columbia silty clay loam.



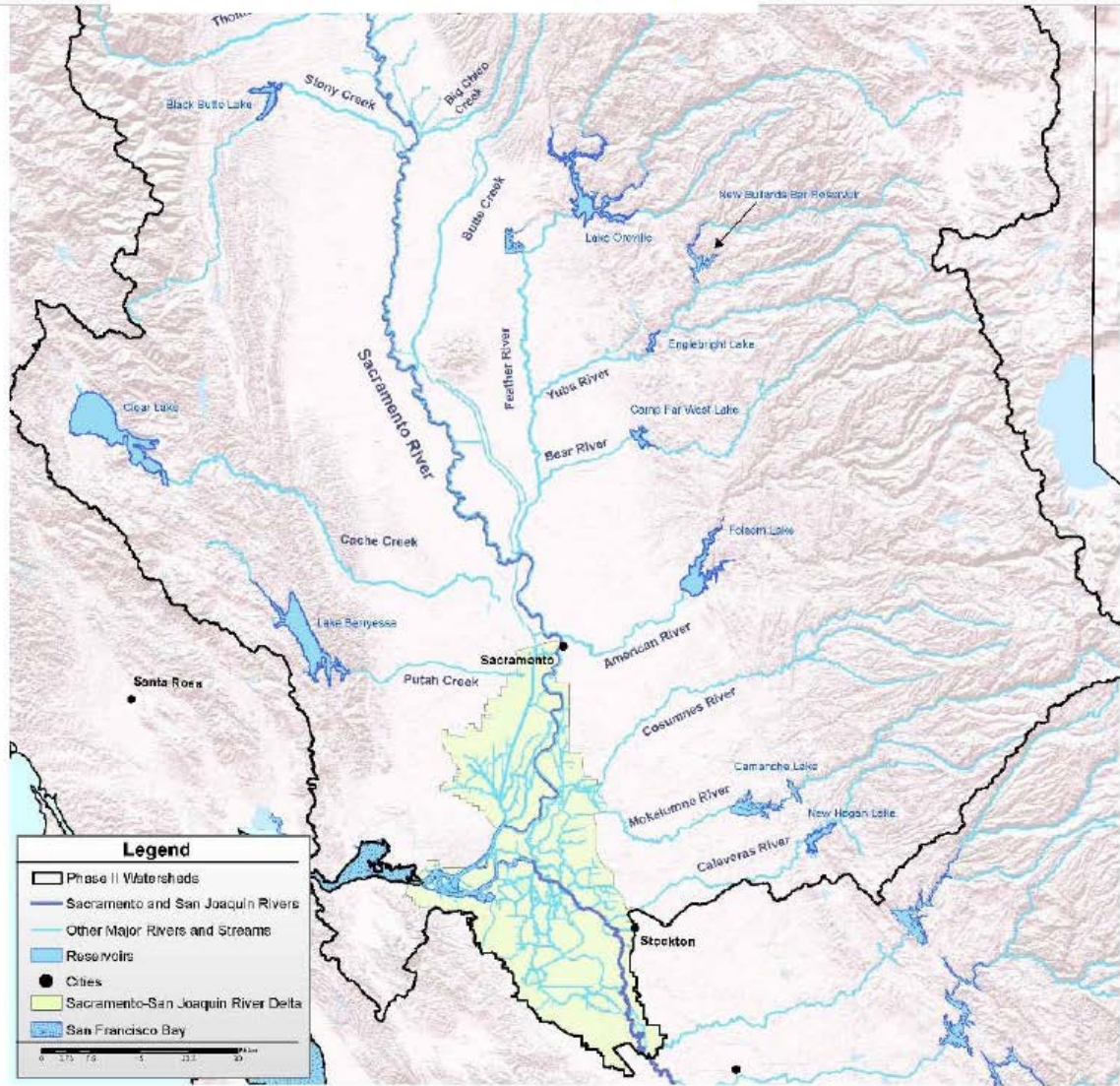
[Return to Thumbnail List](#)

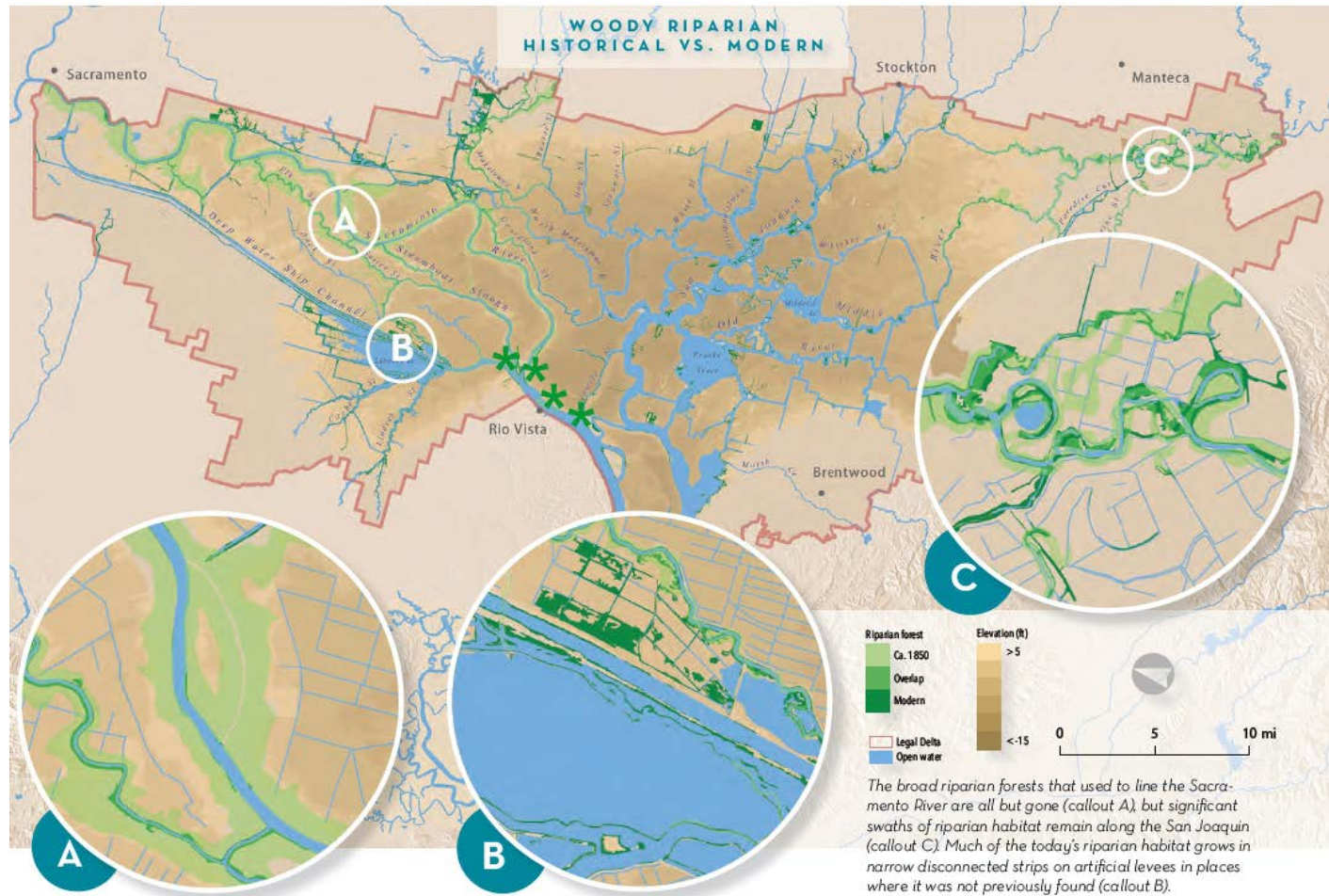
California Sacramento - San Joaquin Delta Area 1935.sid

Bookmarks



- Scientific Basis Report in Support of New and Modified Requirements for Inflows from the Sacramento River and
 - Contents
 - Tables and Figures
 - Acronyms and Abbreviations
- Chapter 1 - Overview
 - 1.1 Introduction
 - 1.2 Final Draft Scientific Basis Report
 - 1.2.1 The Bay-Delta Watershed
 - 1.2.2 Purpose and Need for Bay-Delta Update
 - 1.2.3 Bay-Delta Water Quality Control Planning Background
 - 1.2.4 The Delta Reform Act and Delta Flow Criteria Report





THE ESTUARY, NORTHERN CALIFORNIA

