



Department of Conservation

Division of Oil, Gas & Geothermal Resources - Well Finder

Find By Location

Find My Current Location

or

Street:

City:

Zip:

Display a buffer

Buffer radius is limited to 10 mi (52800ft).

Find By API

Find By Lat, Long

Find By PLSS

Find By Oil/Gas Field

Data (Layers):

Notices & Permits

DOGGR Wells

Label:

EPA Wells for Aquifer Exemption Review

Enhanced Oil Recovery Wells

Disposal Wells

TR26 Onshore Seeps

Oil/Gas Fields

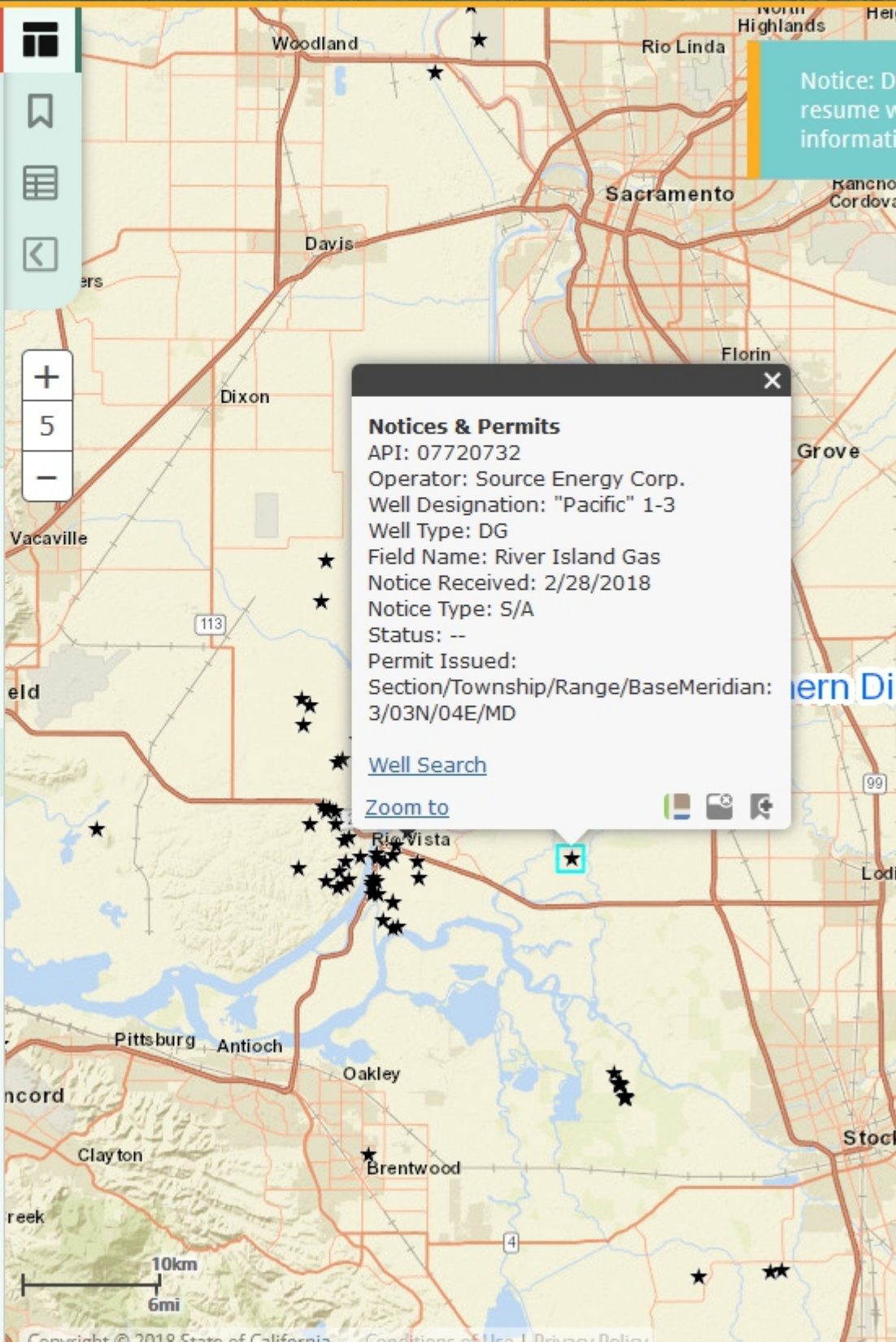
California Geologic Map

DOGGR Districts

Public Land Survey System

Cities

State Assembly Districts



Notice: D resume v informat

Notices & Permits

API: 07720732
Operator: Source Energy Corp.
Well Designation: "Pacific" 1-3
Well Type: DG
Field Name: River Island Gas
Notice Received: 2/28/2018
Notice Type: S/A
Status: --
Permit Issued:
Section/Township/Range/BaseMeridian:
3/03N/04E/MD

[Well Search](#)

[Zoom to](#)

