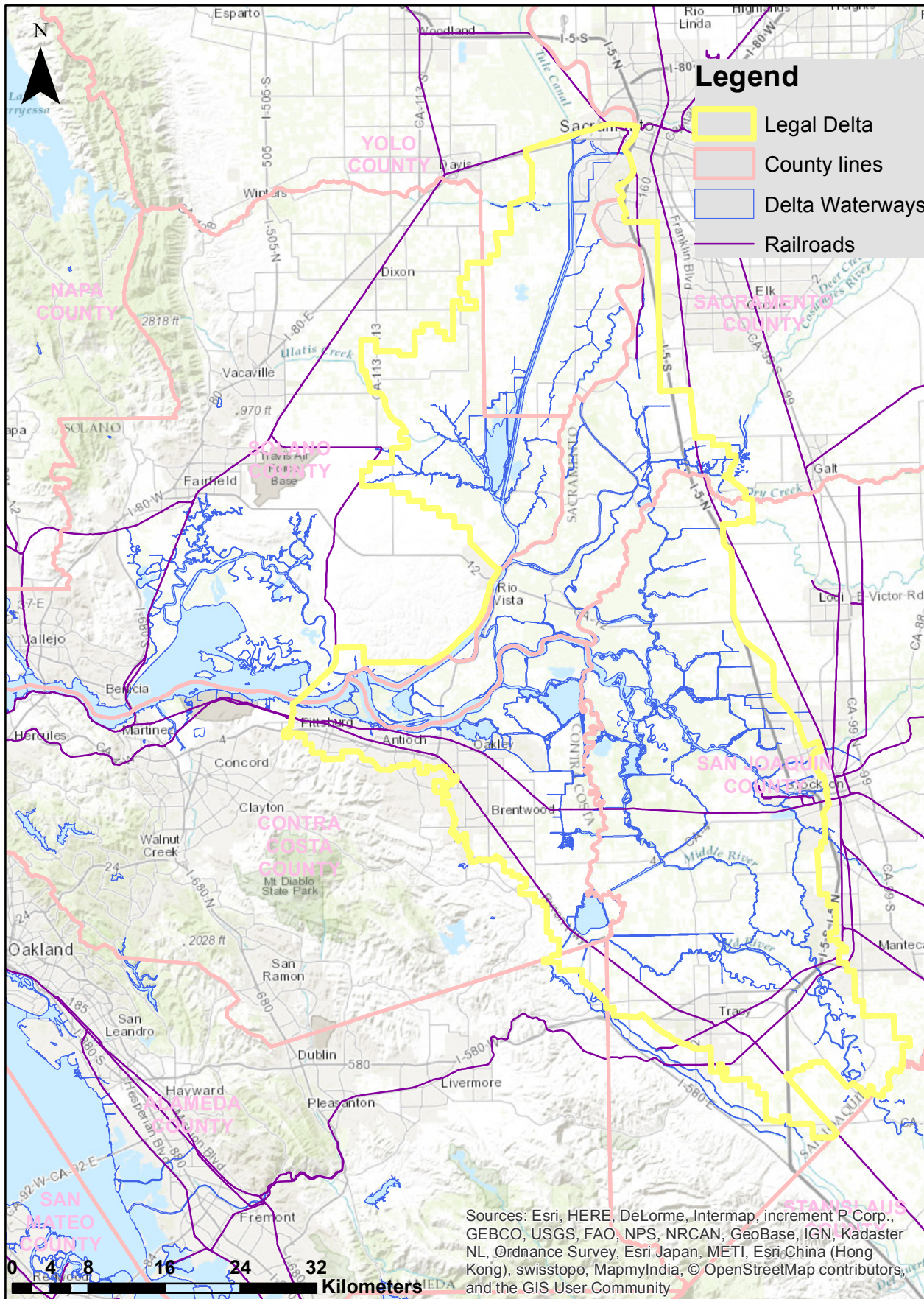
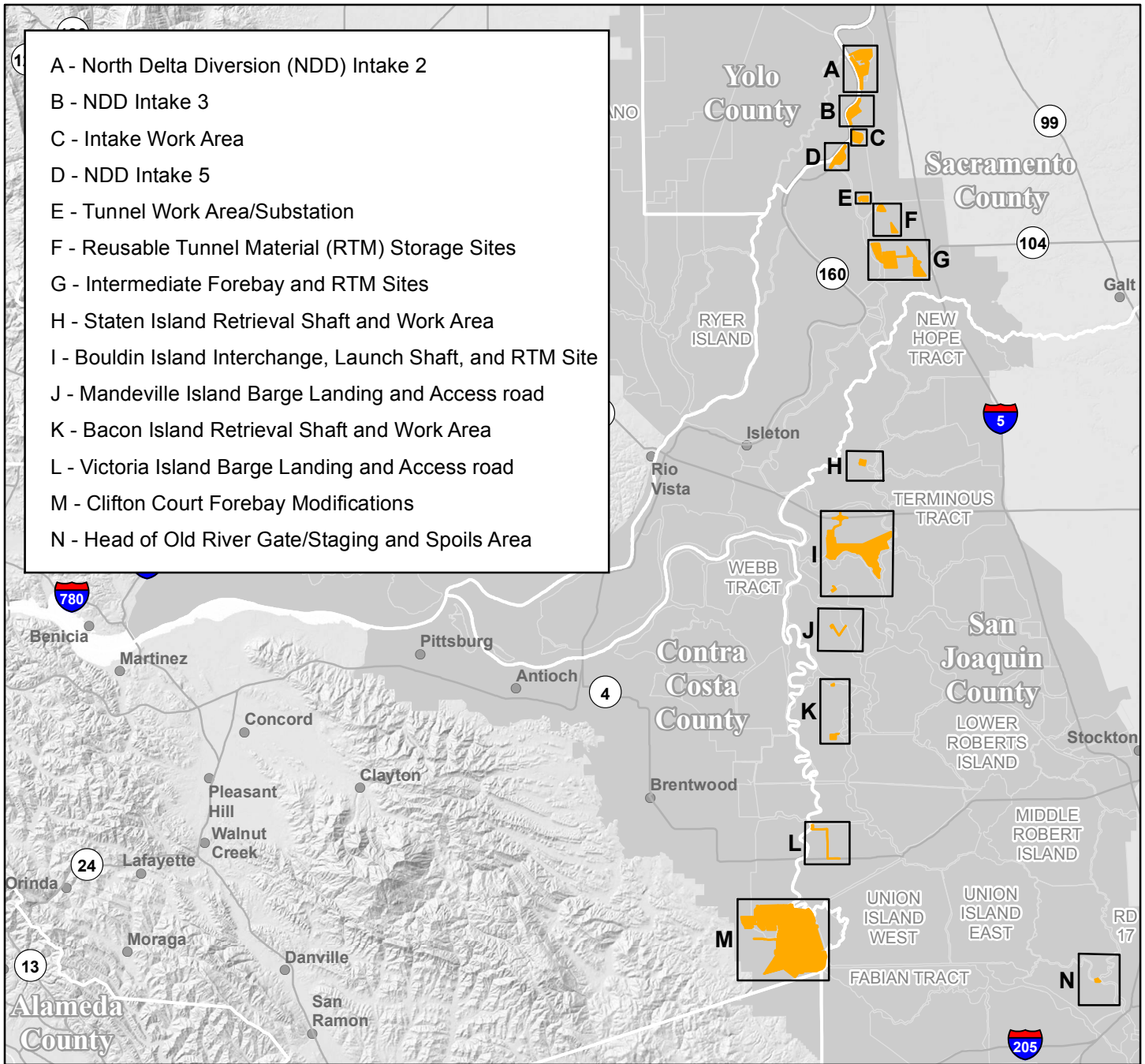


### Project Area



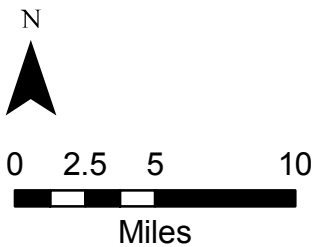
Data: CDWR, CDFW

Figure 2



- A - North Delta Diversion (NDD) Intake 2
- B - NDD Intake 3
- C - Intake Work Area
- D - NDD Intake 5
- E - Tunnel Work Area/Substation
- F - Reusable Tunnel Material (RTM) Storage Sites
- G - Intermediate Forebay and RTM Sites
- H - Staten Island Retrieval Shaft and Work Area
- I - Bouldin Island Interchange, Launch Shaft, and RTM Site
- J - Mandeville Island Barge Landing and Access road
- K - Bacon Island Retrieval Shaft and Work Area
- L - Victoria Island Barge Landing and Access road
- M - Clifton Court Forebay Modifications
- N - Head of Old River Gate/Staging and Spoils Area

California Department of Fish and Wildlife. D.Mastalir. 20170123



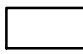

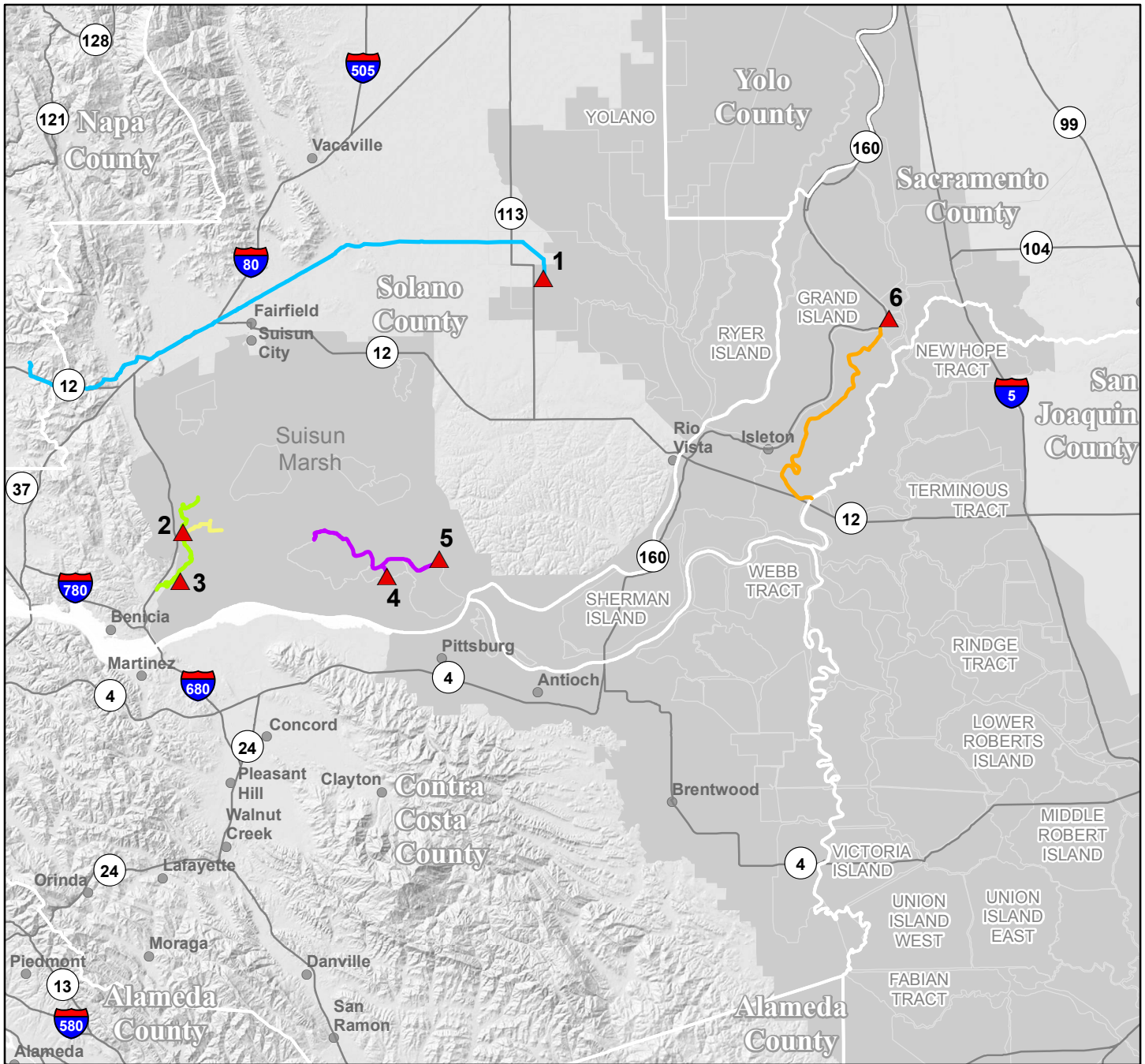
	Reference Regions
	Tunneled Conveyance Facilities



Figure 3



California Department of Fish and Wildlife. D.Mastalir. 20170126

- |  |  |
|--|--|
| <ul style="list-style-type: none"> <li><span style="color: red;">▲</span> Project Facilities</li> <li>1 - Barker Slough Pumping Plant</li> <li>2 - Morrow Island Distribution System</li> <li>3 - Good year Slough Outfall</li> <li>4 - Roaring River Distribution System</li> <li>5 - Suisun Marsh Salinity Control Gate</li> <li>6 - Georgiana Slough Barrier</li> </ul> | <p>Distribution System</p> <ul style="list-style-type: none"> <li><span style="color: orange;">—</span> Georgiana Slough</li> <li><span style="color: green;">—</span> Goodyear Slough Outfall</li> <li><span style="color: yellowgreen;">—</span> Morrow Island Distribution System</li> <li><span style="color: blue;">—</span> North Bay Aqueduct</li> <li><span style="color: purple;">—</span> Roaring River Distribution System</li> </ul> |
|--|--|

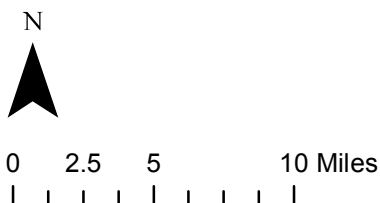
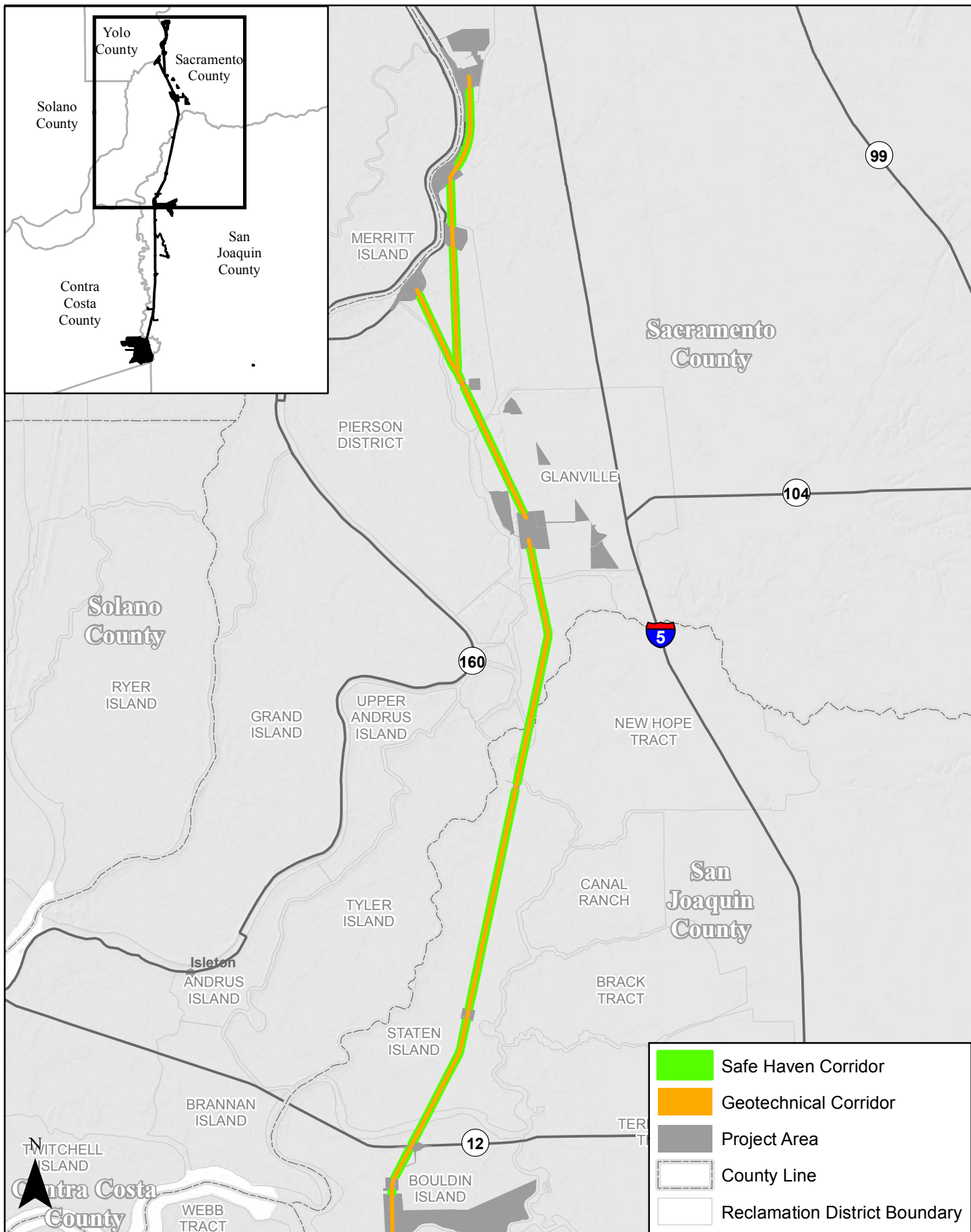


Figure 4a



California Department of Fish and Wildlife. D.Mastalir. 20170223

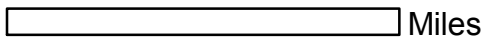




Figure 4b

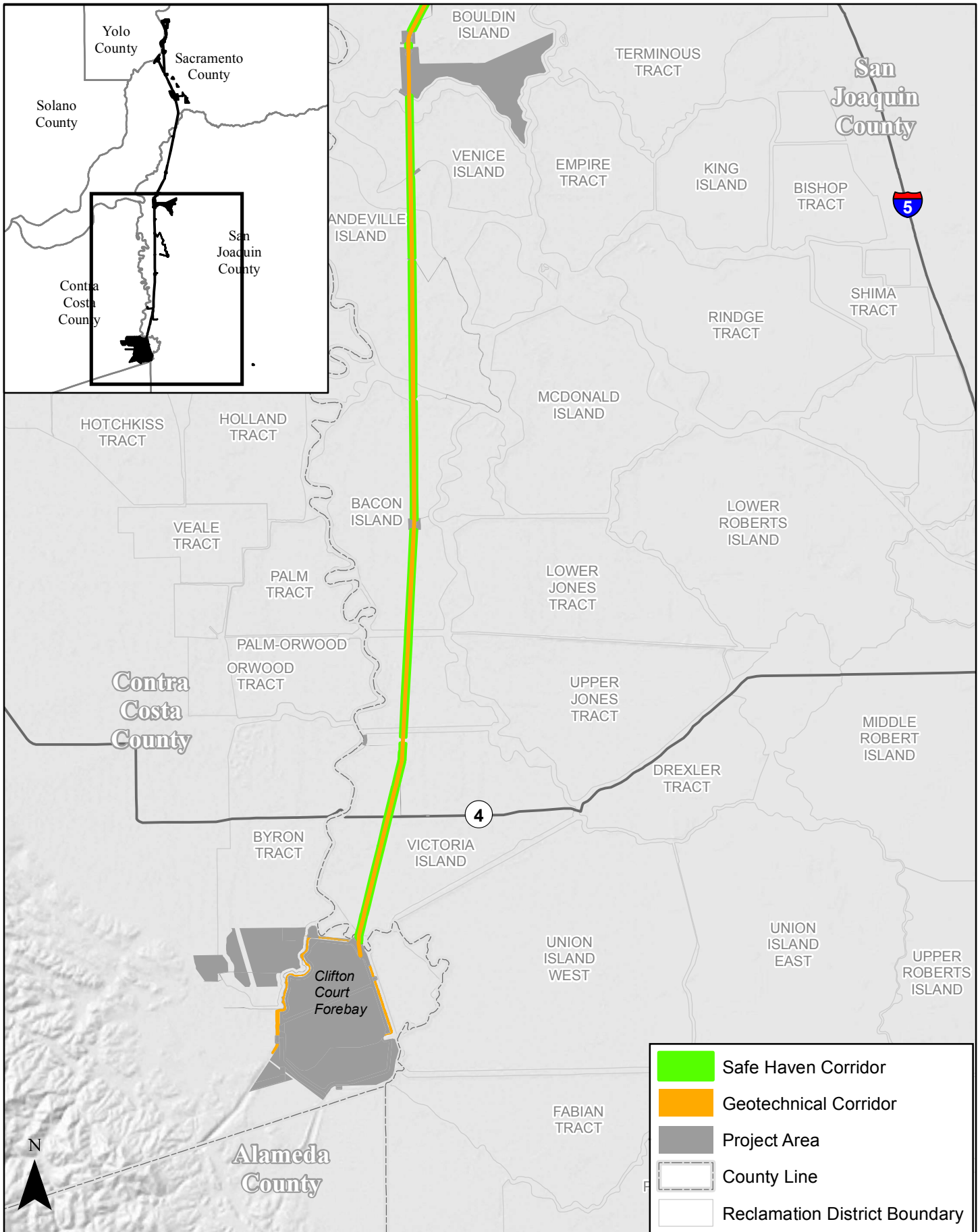
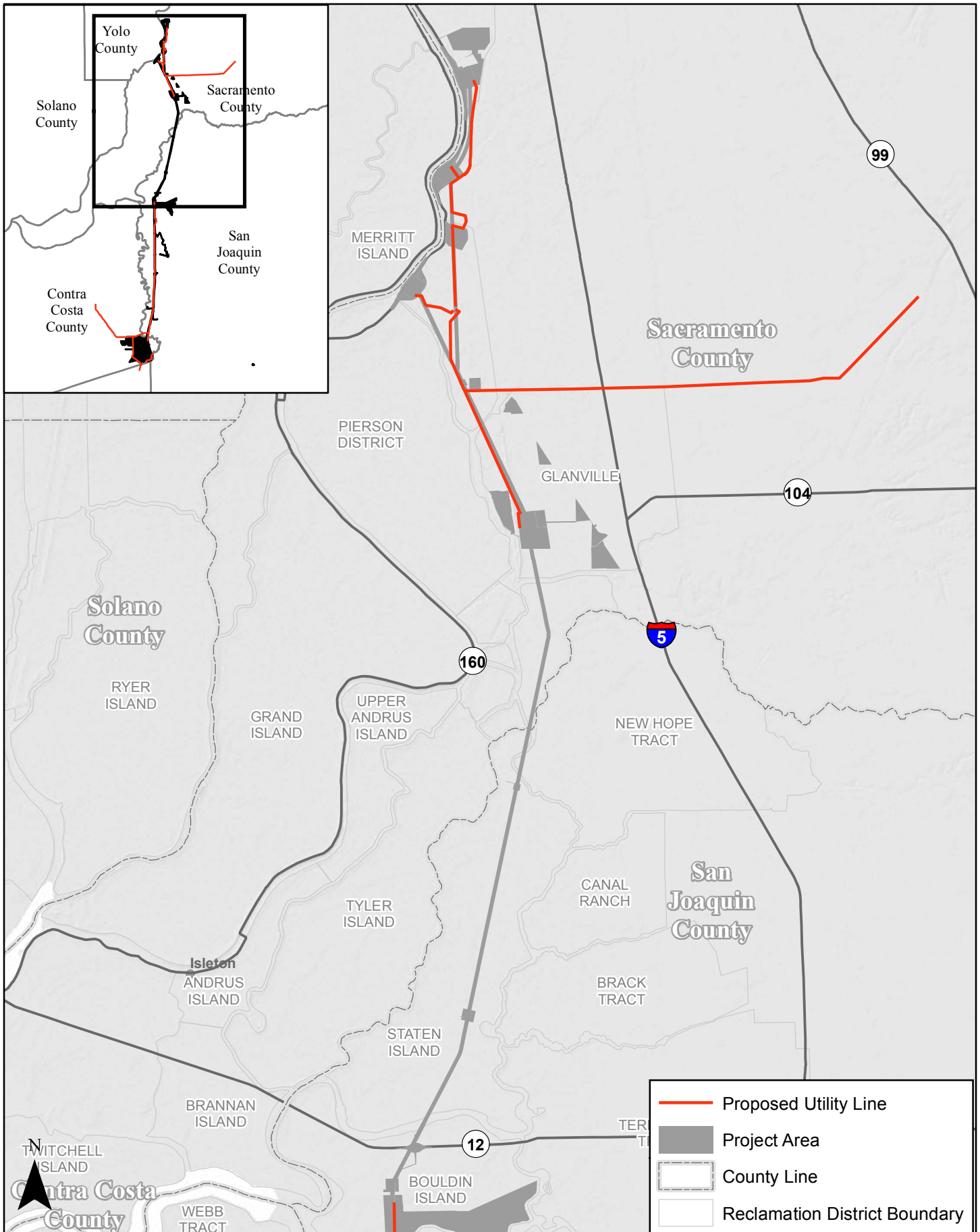


Figure 4c



California Department of Fish and Wildlife. D.Mastair. 20170223

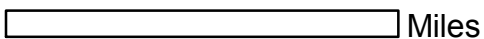
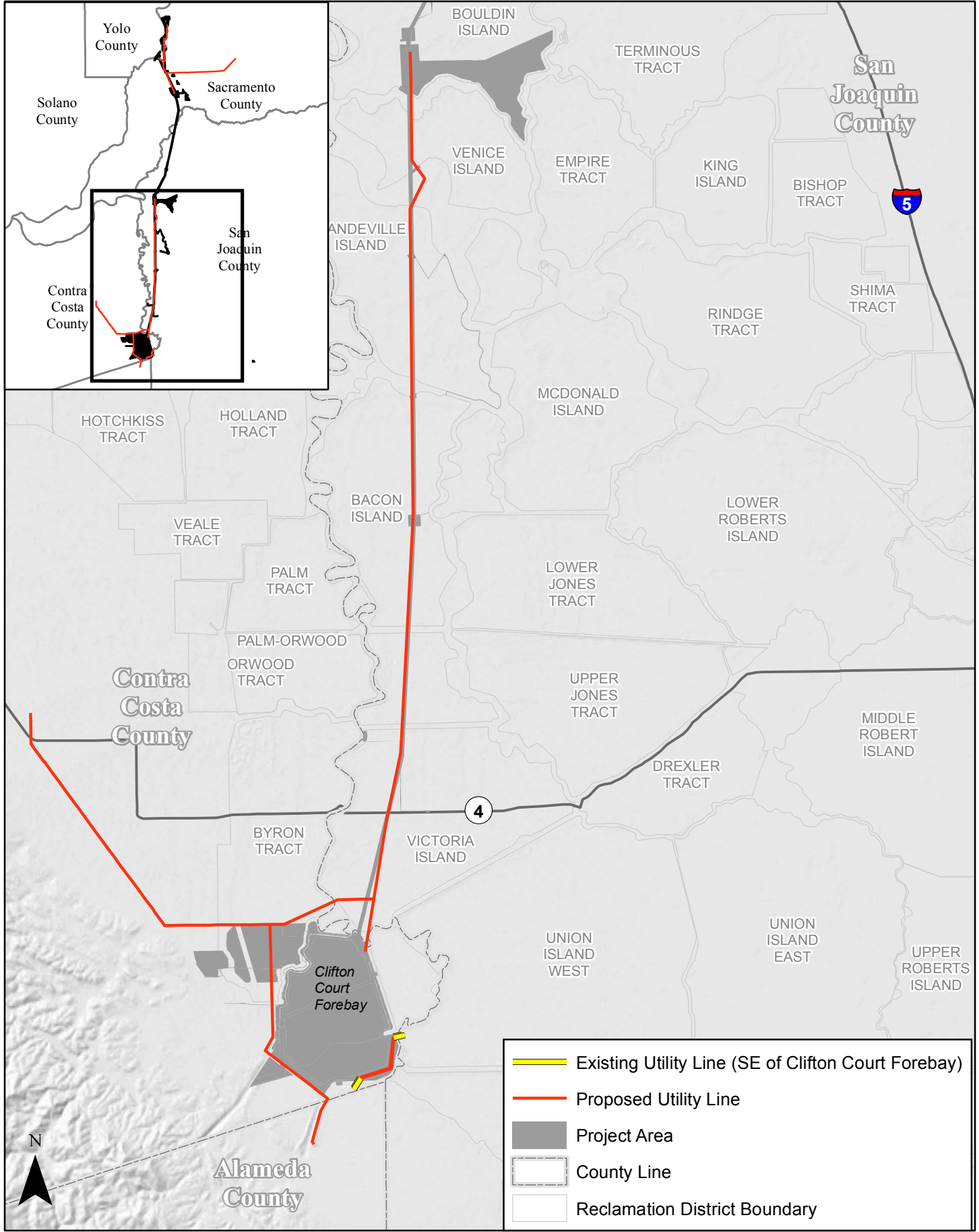


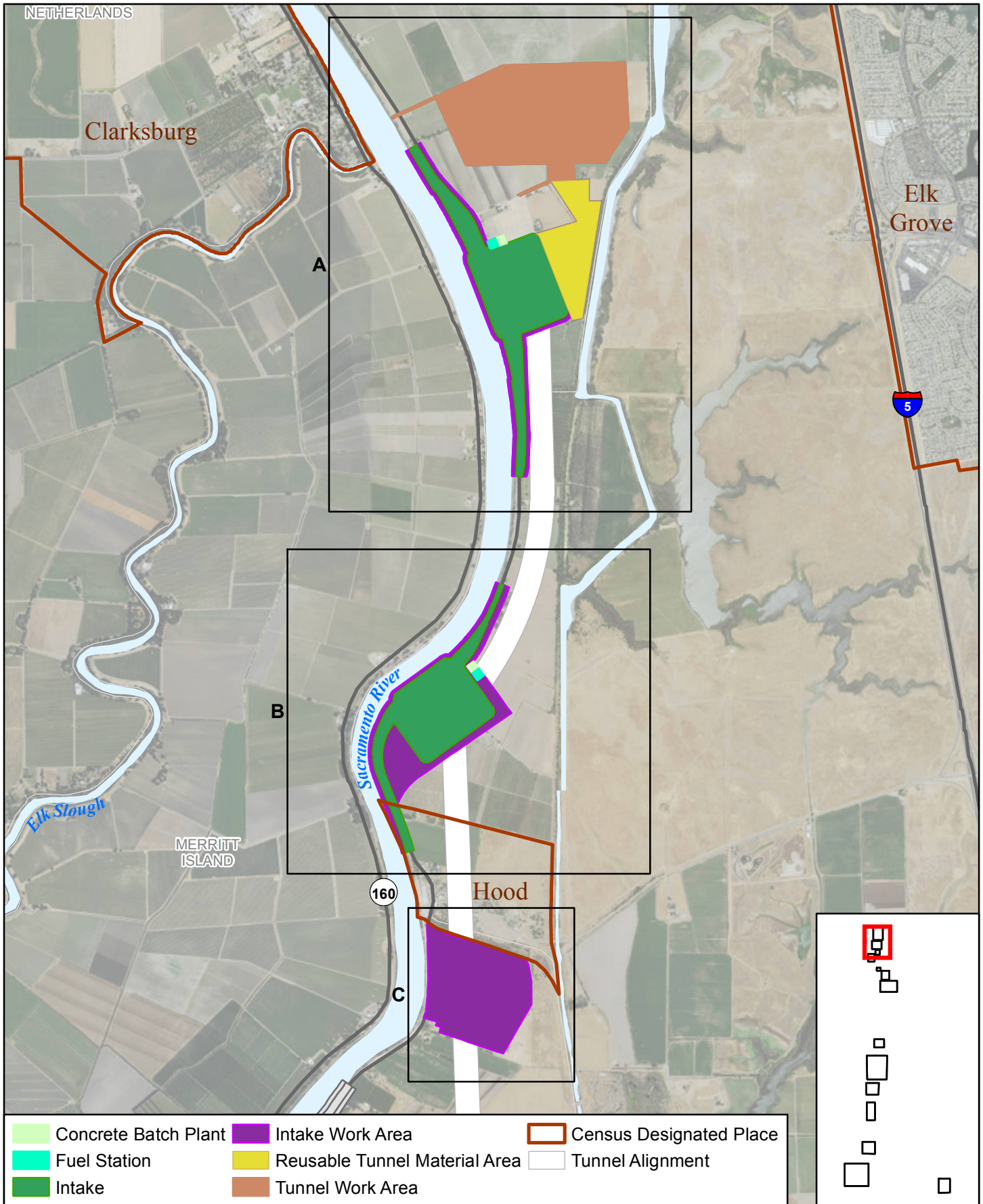


Figure 4d

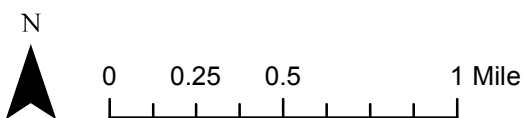


California Department of Fish and Wildlife. D.Mastair. 20170223

Figure 5



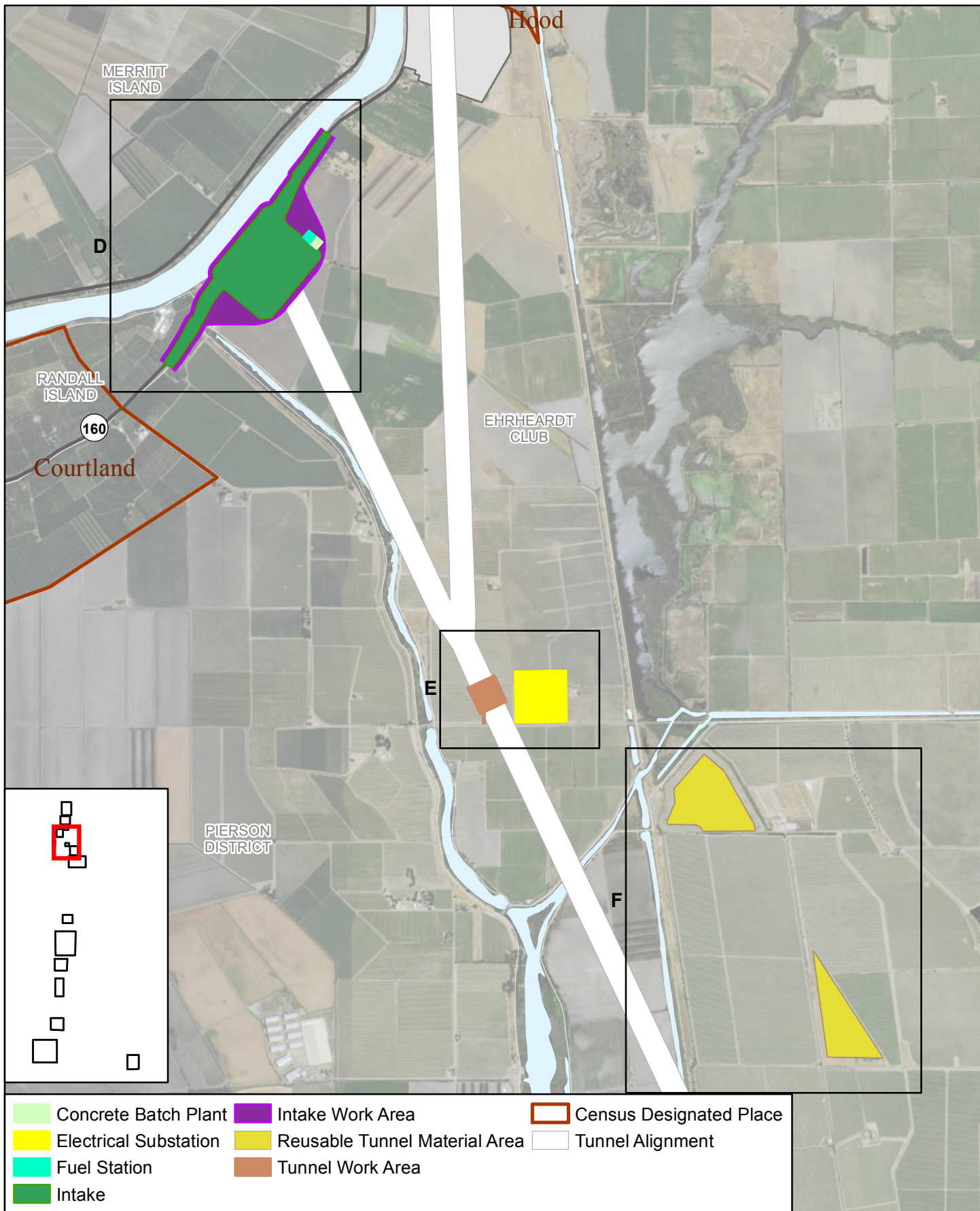
California Department of Fish and Wildlife. D.Mastair. 20170125



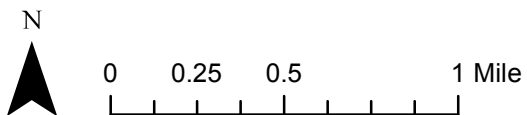
Region A - North Delta Diversion (NDD) Intake 2  
Region B - NDD Intake 3  
Region C - Intake Work Area



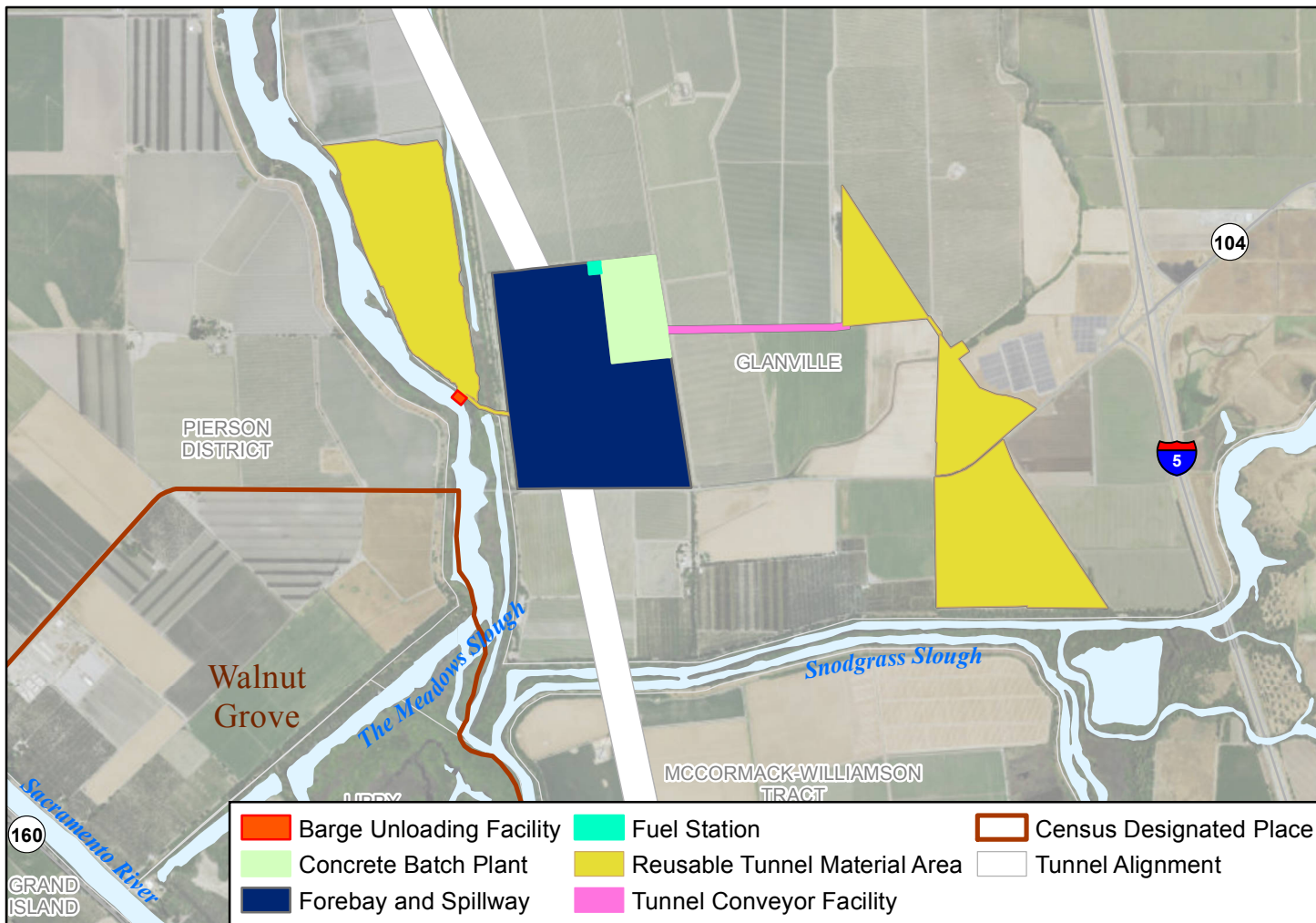
Figure 6



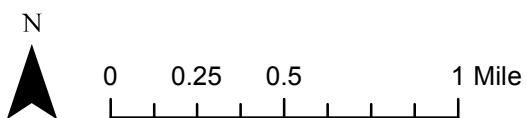
California Department of Fish and Wildlife. D.Mastair. 20170125



Region D - North Delta Diversion Intake 5  
 Region E - Tunnel Work Area/Substation  
 Region F - Reusable Tunnel Material Storage Sites



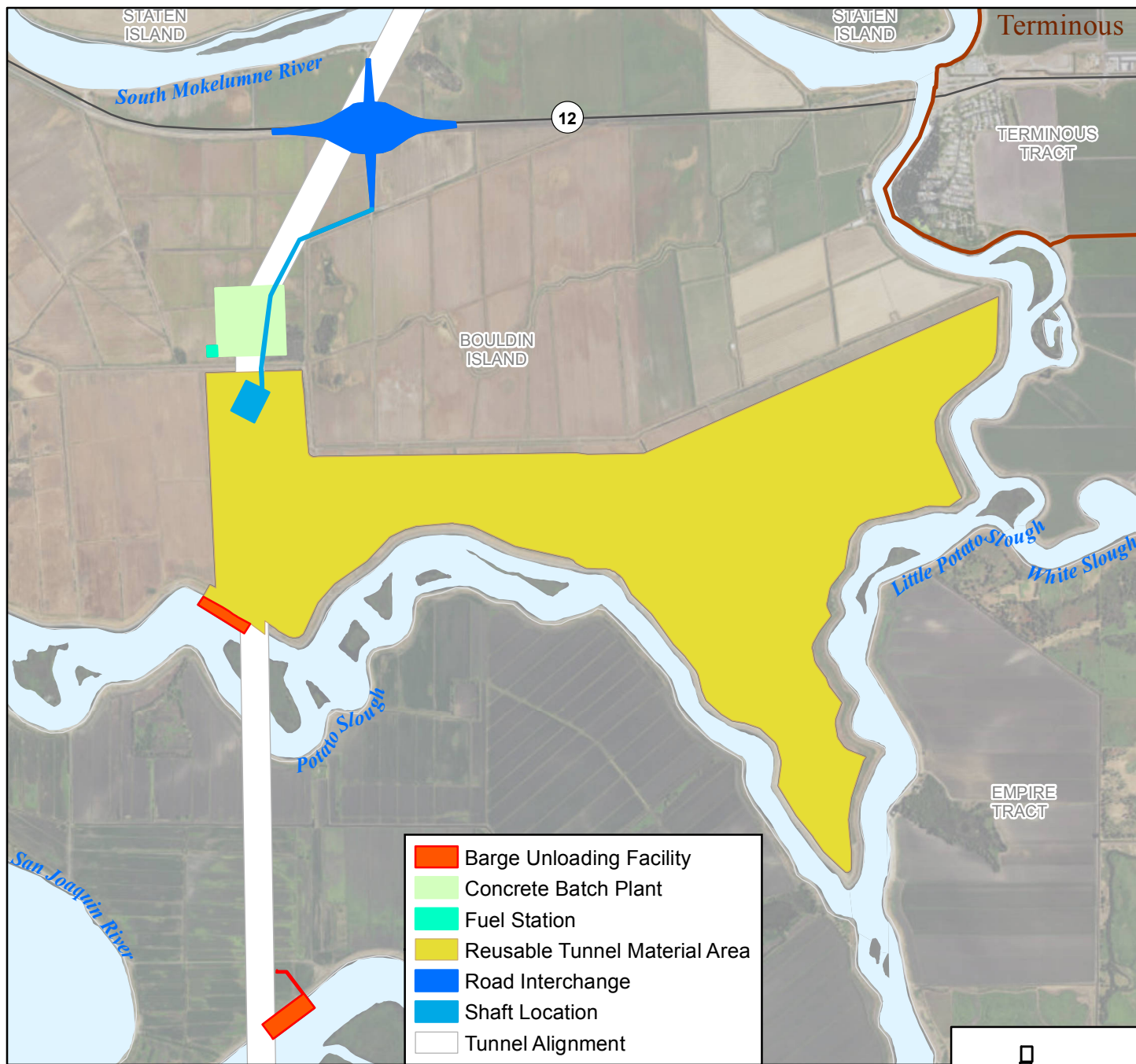
California Department of Fish and Wildlife. D.Mastalir. 20170124



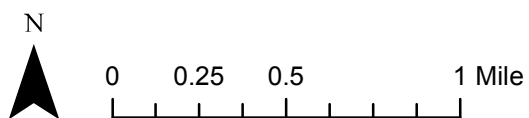
Region G (Top) - Intermediate Forebay and Reusable Tunnel Material Site  
 Region H (Bottom) - Staten Island Retrieval Shaft and Work Area



Figure 8

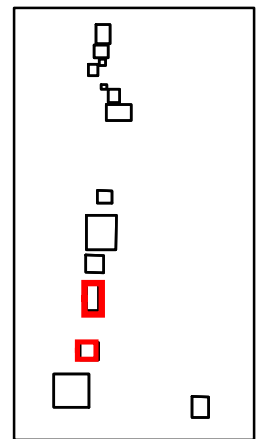
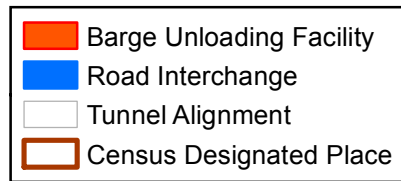
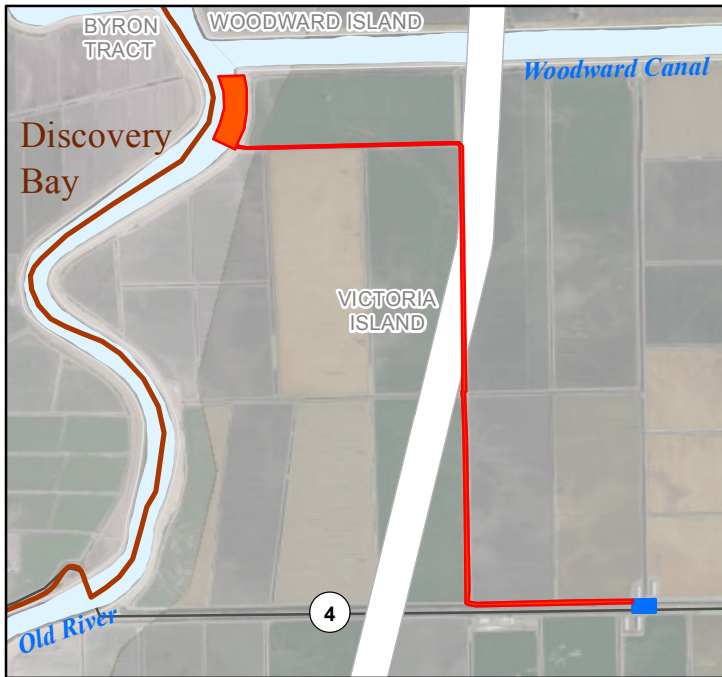
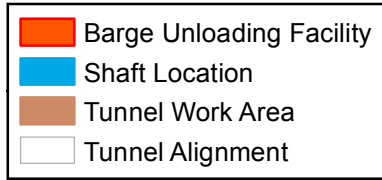


California Department of Fish and Wildlife. D.Mastalir. 20170223

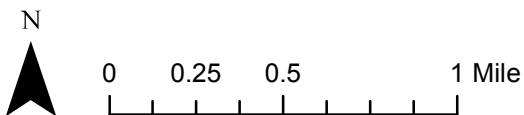


Region I (Top) - Bouldin Island Interchange, Launch Shaft, and Reusable Tunnel Material Site  
 Region J (Bottom) - Mandeville Island Barge Landing and Access Road

Figure 9



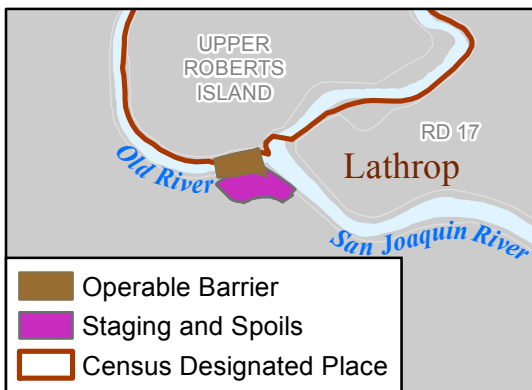
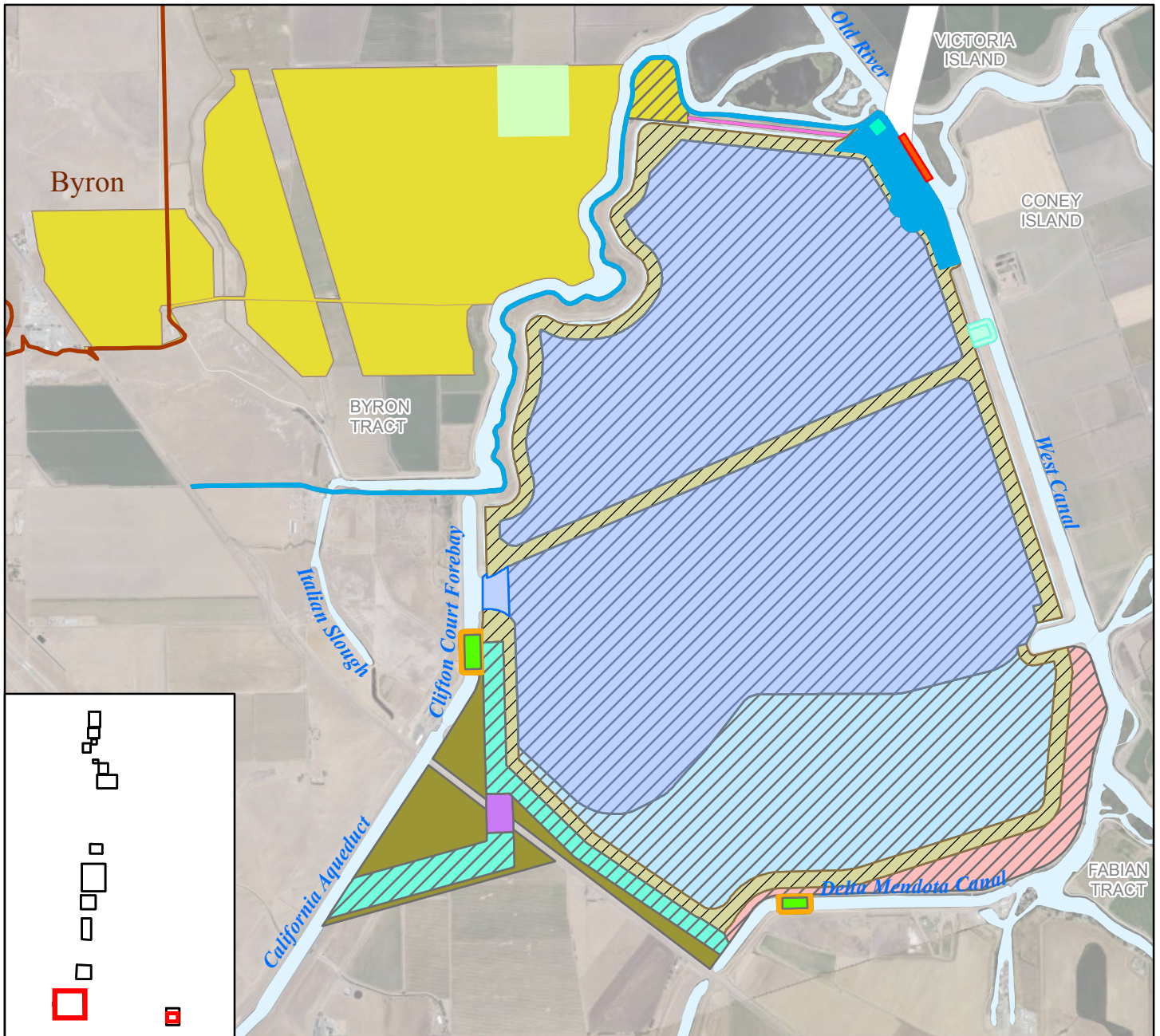
California Department of Fish and Wildlife. D.Mastalir. 20170125



Region K (Top) - Bacon Island Retrieval Shaft and Work Area  
 Region L (Bottom) - Victoria Island Barge Landing and Access Road

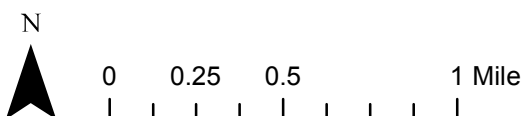


Figure 10



- |  |                             |  |                               |
|--|-----------------------------|--|-------------------------------|
|  | Barge Unloading Facility    |  | Forebay Overflow Structure    |
|  | Canal                       |  | New Forebay                   |
|  | Canal Work Area             |  | Fuel Station                  |
|  | Concrete Batch Plant        |  | Power Transmission Relocation |
|  | Control Structure           |  | Reusable Tunnel Material Area |
|  | Control Structure Work Area |  | Shaft Location                |
|  | Forebay                     |  | Siphon Work Area              |
|  | Forebay Dredging Area       |  | Staging Area                  |
|  | Forebay Embankment Area     |  | Tunnel Conveyor Facility      |
|  |                             |  | Tunnel Alignment              |
|  |                             |  | Census Designated Place       |

California Department of Fish and Wildlife. D.Mastalir. 20170124



Region M (Top) - Clifton Court Forebay Modifications  
 Region N (Bottom) - Head of Old River Gate/Staging and Spoils Area