



United States Department of the Interior

FISH AND WILDLIFE SERVICE



September 14, 2012

Technical Staff Comments to the State Water Resources Control Board re: the Comprehensive (Phase 2) Review and Update to the Bay-Delta Plan, Public Workshop 2, Bay Delta Fishery Resources (Salmonids)

The U.S. Fish and Wildlife Service (Service) submits the following written comments in response to the questions posed by the State Water Resources Control Board (Board) for discussion at the salmonid workshop that support the Comprehensive (Phase 2) Review and Update to the Bay-Delta Plan. The following responses contain additional scientific and technical information that was not included in or available for the 2009 Staff Report (SWRCB, 2009) or the 2010 Delta Flow Criteria Report (SWRCB, 2010). These comments also supplement the Department of the Interior's April 25, 2012 comments to the Board. Overall, we make the following key points to supplement our April 25 key points:

KEY POINTS:

1. The Board should consider updated information on the status of the stocks (escapement, adult production and juvenile production indices) to inform potential changes to the Bay-Delta Plan.
2. The Board should consider recent genetic information on the timing of various runs of Chinook salmon in sampling near Sacramento, Chipps Island and at the salvage facilities to assure adequate protection of all runs of Chinook salmon in the Delta.
3. The Board should consider information from the 2010 VAMP study, indicating juvenile Chinook salmon survival through the Delta was only 5% at Vernalis flows of approximately 5,000 cfs in 2010. Juvenile salmon



survival in 2010 was lower than survival through the Delta in many past years measured with tagged fish released for the VAMP.

4. The Board should consider evaluating a physical barrier at the head of Old River to get higher juvenile salmon survival through the Delta at Vernalis flows of up to 7,000 cfs.
5. Survival through the Delta is a key component to determining adult recruits from juvenile salmon abundance coming into the Delta.
6. Continued monitoring of Chinook salmon survival is critical to assure flow criteria and other management actions result in increased Delta survival rates for Chinook salmon and for informing models and implementing adaptive management.
7. Results from 2011 and 2012 south Delta salmon and steelhead studies should be used to help determine appropriate Old and Middle River flow criteria to assure juvenile salmonids from the San Joaquin Basin are able to migrate successfully through the Delta.
8. There is evidence to suggest that if spring flows originating from the San Joaquin River are increased, predation will decrease and survival of juvenile salmon migrating through south Delta will improve.
9. Furthermore, increased predation-related mortality in the south Delta is related to changes in south Delta habitat related to the high export/inflow ratios between July and September.
10. The Board should consider new information in relation to modifying the timing and duration of Delta Cross Channel gate closures when revising the 2006 Water Quality Control Plan.
11. The Board should address scientific uncertainty and changing circumstances within an adaptive management plan. We reference a new DOI Applications Guide on adaptive management to help the Board design and implement a successful adaptive management program.
12. Specific biological indicators should be incorporated into the goals and objectives of the Plan to guide the monitoring and special studies program and to inform adaptive management.

What additional scientific information should the State Water Board consider to inform potential changes to the Bay-Delta Plan relating to Bay-Delta fishery resource, and specifically pelagic fishes and salmonids, that was not addressed in the 2009 staff Report and the 2010 Delta Flow Criteria Report?

The recent status of Central Valley Chinook salmon stocks should be considered to inform potential changes to the Bay-Delta Plan (Plan) and update information used

in the 2009 Staff Report (SWRCB, 2009) and the 2010 Delta Flow Criteria Report (SWRCB, 2010). For example, fall-run escapement of Chinook salmon in the Central Valley has improved somewhat in 2010 and 2011 from the extreme low levels in 2008 and 2009, but numbers are still at relatively low levels compared to escapement since 1952 (Figure 1).

Escapement of fall-run Chinook salmon and the production of all four races of Chinook salmon in the Central Valley (DFG written comments, this proceeding) indicate recent conditions in the Delta and in other areas (i.e. ocean) have not facilitated positive population growth, such that the Plan's narrative salmon protection objective is being met. The Board's narrative salmon protection objective is to provide water quality conditions together with other measures in the watershed sufficient to achieve a doubling of natural production of Chinook salmon from the average production between 1967 and 1991, consistent with provisions of State and federal law.

In addition, the Board should consider recent assessments of the relative contribution of naturally produced Chinook salmon compared to hatchery contributions. Kormos et al., (2012) document the proportions of hatchery and natural origin Chinook salmon throughout the Central Valley based on the analysis of coded wire tags collected from escapement surveys and at hatcheries. This report finds roughly half of the returning adult salmon in the Stanislaus and Tuolumne rivers, and over three quarters of the Merced River returns are of hatchery origin (Figure 9, in Kormos et. al., 2012). Given that the aforementioned doubling goal applies to naturally produced salmon, the Board should evaluate the potential benefits of increased flows as numbers of natural origin salmon are lower than previously assumed based on escapement surveys.

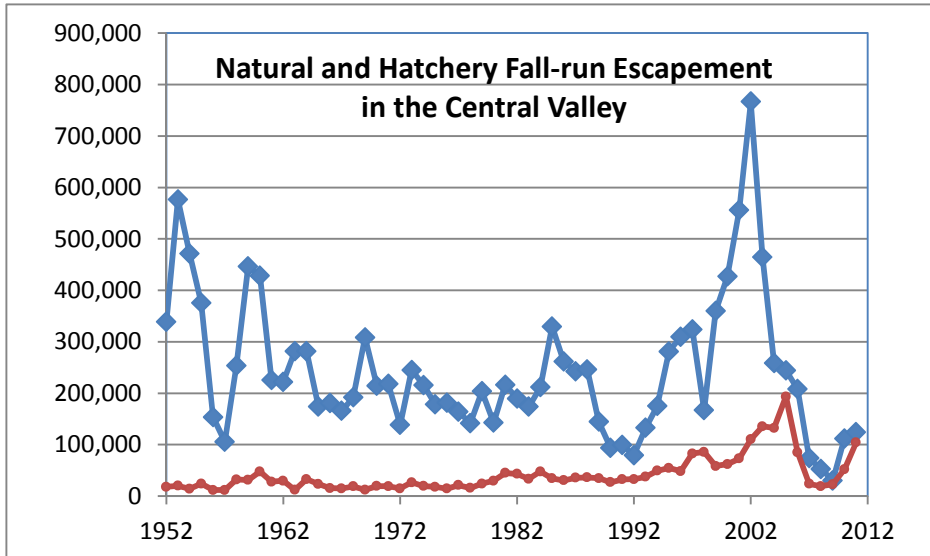


Figure 1: Fall run escapement in natural areas (diamonds) and in hatcheries (circles) in the Central Valley between 1952 and 2011. Escapement includes fish of both hatchery and natural origin (CDFG Grandtab, April 24, 2012).

The Board should also consider updated information on the relationship of flow and the abundance of juvenile salmon leaving the Delta in the spring. The relationship of unmarked juvenile salmon indices at Chipps Island between 1978 and 2011, and mean daily Rio Vista flows between April and June, continues to support the hypothesis that increased flow results in increased juvenile production leaving the Delta (Figure 2) (USFWS, 1987; Brandes and McLain, 2001; Brandes et al., 2006). Other factors, such as the prior year’s escapement, could also affect these indices, but preliminary analysis indicates the relationship remains, even after accounting for varying prior-year escapement (fall run from the Sacramento Basin) except for those years with the lowest escapement values (USFWS, unpublished data). There is some evidence that, on average, abundance at Chipps Island was lower between 1995 and 2006 per unit flow at Rio Vista than during the period from 1978 to 1994 (Figure 3). In addition, since indices at Chipps Island only include unmarked juvenile salmon caught in sampling, indices between 2007 and 2011 contain proportionally fewer hatchery fish relative to years prior to 2007, since 25% of the fall-run hatchery production was marked starting in 2007 (Kormos et. al., 2012). Although indices are lower since 2007, they still appear to increase with flow, with the highest abundances at approximately 40,000 cfs at Rio Vista (Figure 3). Other updated information on juvenile salmon abundance and distribution and how it relates to flows is available from our Stockton Fish and Wildlife Office.

It should be noted that juvenile salmon indices at Chipps Island based on catches in April through June, likely include some spring-run, late-fall-run and a few winter-run, in addition to fall-run salmon. Most winter-run (as determined using genetics) enter the Delta between October and April and migrate from the Delta between December and April (USFWS, unpublished data; and Hedgecock, 2002). Most spring-run enter the Delta between February and June and leave the Delta between March and June (USFWS, unpublished data). A report by California Department of Water Resources on the genetic composition of juvenile Chinook salmon in Central Valley Project and State Water Project salvage should be available soon (B. Harvey, personal communication) and could be used to better evaluate when winter -run and spring-run as well as the other races of Chinook salmon are most vulnerable to the direct and indirect impacts of water diversions.

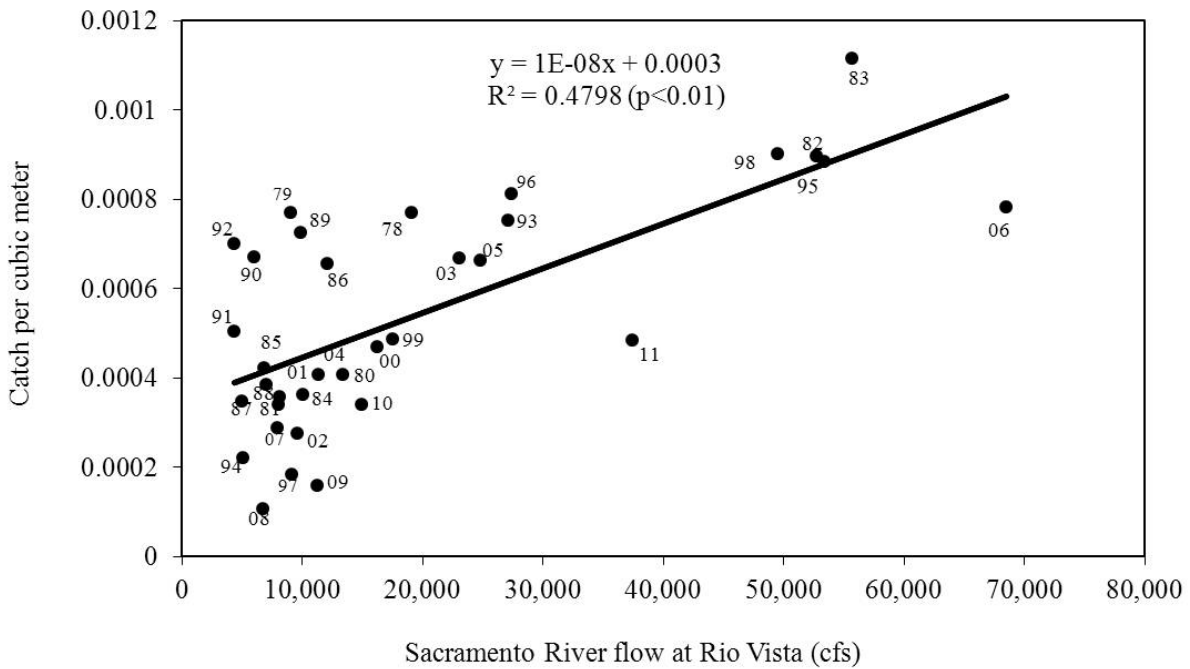


Figure 2: Mean monthly catch per cubic meter of unmarked juvenile Chinook salmon at Chipps Island between April and June of 1978 to 2011 versus mean daily Sacramento River flow at Rio Vista between April and June in cfs (USFWS, 1987, Brandes and McLain, 2001, Brandes, et al., 2006 and USFWS, unpublished data).

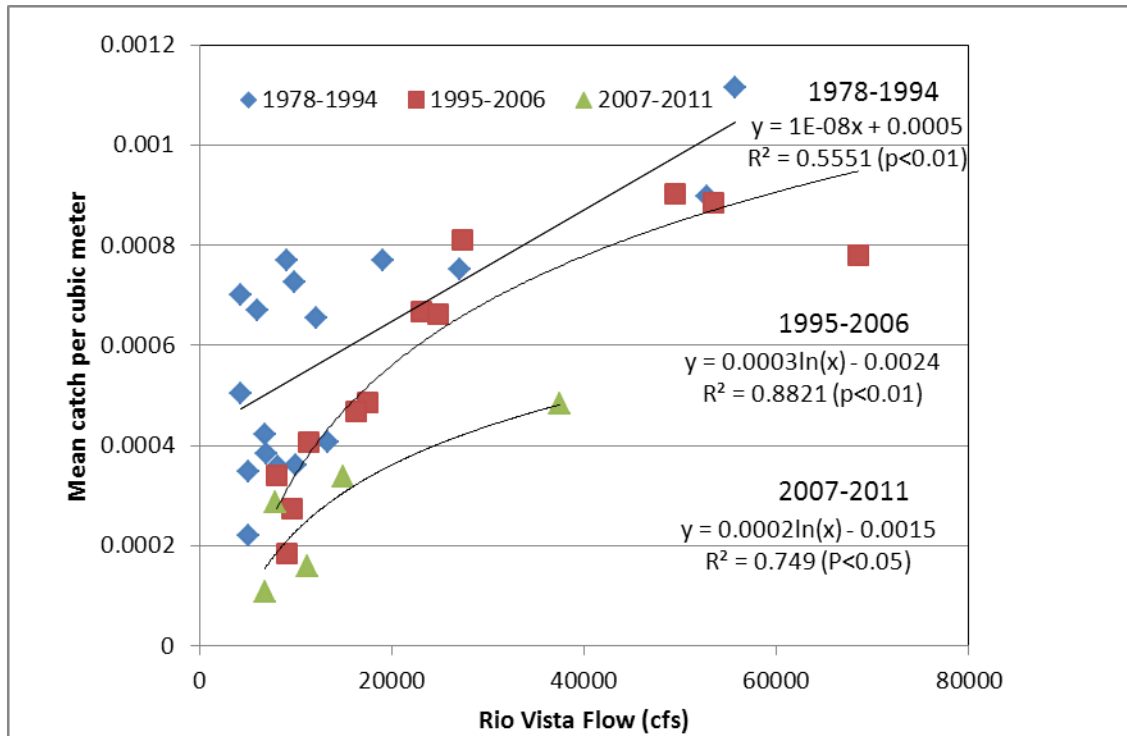


Figure 3: Mean monthly catch per cubic meter of unmarked juvenile Chinook salmon at Chipps Island between April and June in three historical periods, and mean daily Sacramento River flow at Rio Vista in cfs between April and June (USFWS, 1987, Brandes and McLain, 2001, Brandes, et al., 2006 and USFWS, unpublished data)

We suggest the Board and Board Staff consider including information from the 2010 Vernalis Adaptive Management Program (VAMP) annual report (SJRG, 2011) for modifying the 2006 Plan, which provides new information not available for the 2009 Staff Report (SWRCB, 2009) and the 2010 Delta Flow Criteria Report (SWRCB, 2010). Vernalis flows in May of 2010 were around 5,000 cfs, but smolt survival through the Delta in 2010 for tagged fish released in the San Joaquin River was estimated at only 0.05 (5%) – lower than most estimates since 1994 (Figure 4). While comparisons of juvenile salmon survival in common reaches of the Delta in the spring between 2009 and 2010 indicate survival was substantially greater in 2010 than in 2009 (SJRG, 2011), neither year had survival high enough through the Delta to sustain the population, given average estimates of survival in other phases of the life-cycle (DOI, 2011).

In our comments to the Board on the *Review of and Potential Modifications to the San Joaquin River Flow and Southern Delta Salinity Objectives* we concluded that an average juvenile Chinook salmon through-Delta survival of 0.50 survival (50%) is needed (given average survival in other phases of the life-cycle and an initial estimate of the population size) to achieve the Central Valley Project Improvement Act’s Anadromous Fish doubling goal in 9 generations (27 years), whereas a

survival rate of 0.05 (5%) results in a greatly increased risk of extirpation (DOI, 2011, page 18). Figure 5 illustrates how juvenile Chinook salmon survival in the Delta is important to resulting adult recruits as abundance of smolts at Mossdale changes.

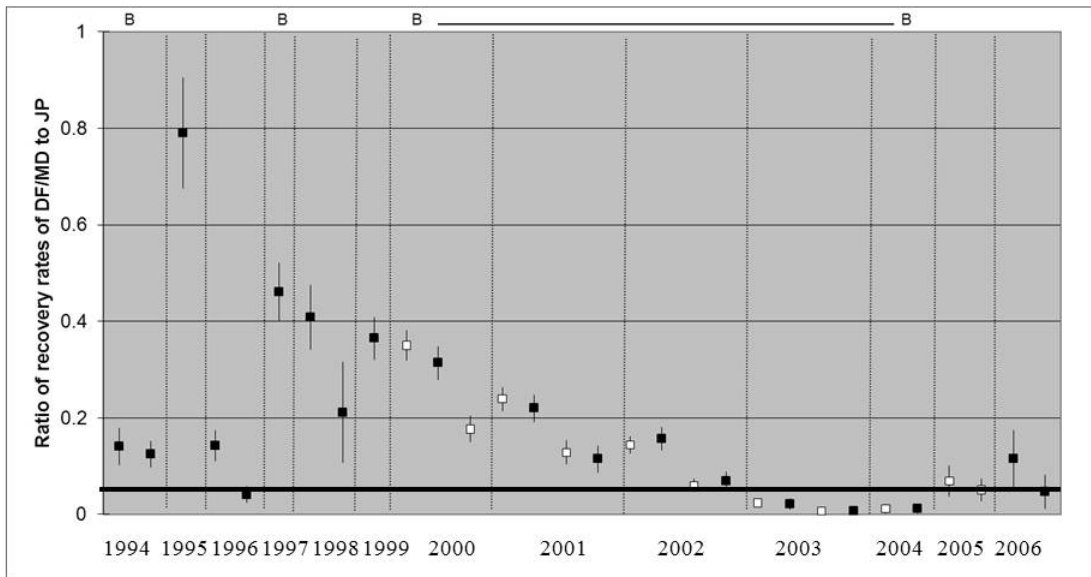


Figure 4: Estimates of smolt survival (± 2 Standard Errors) from Mossdale to Jersey Point during the VAMP between 1994 to 2006 using coded wire tagged fish. Years with the physical Head of Old River Barrier installed are denoted with B and are in 1994, 1997 and 2000-2004. The black line is the estimate of survival between Mossdale and Chipps Island in 2010 using acoustic tag technology and removing predator-type detections. (Brandes et al., 2008 and SJRG, 2011).

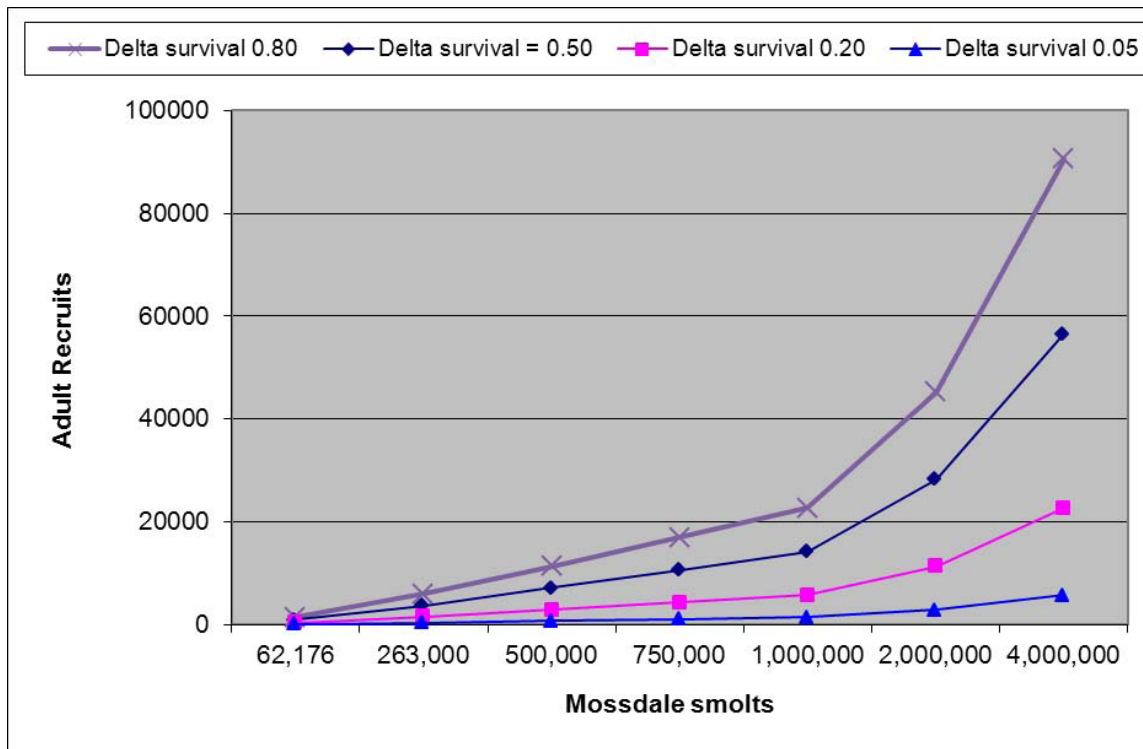


Figure 5: The relationship between simulated juvenile Chinook salmon Delta survival, tributary production (estimated as smolts at Mossdale) and adult recruits for Chinook salmon in the San Joaquin Basin. (DOI, 2011)

As the VAMP peer review panel identified, juvenile salmon survival through the Delta has been decreasing over time at very low, low, moderate and high flow levels (Hankin et al., 2010). Five percent survival through the Delta in 2010 suggests flows of over 5,000 cfs at Vernalis approximately 85% of time may not be sufficient to provide positive salmon population growth or to achieve the narrative salmon protection objective identified in the 2006 Bay-Delta plan. The data obtained in 2010 suggests the proposed minimum threshold of 5,000 cfs at Vernalis may be too low to meet the goals of the Plan.

Much of the information on salmon survival associated with the VAMP was collected with a physical Head of Old River Barrier (HORB) installed (2000-2004). The results from these years of data, in addition to past data gathered without a barrier, suggest the physical barrier resulted in higher survival at any given flow than would have occurred without a barrier (SJRG, 2007). Survival through the Delta in 2010, with the non-physical barrier installed, did not result in survival as high as in the past when the physical barrier was installed at similar flow levels at Vernalis (Figure 6). However, this comparison could be compounded by the decrease in survival over time. The past analyses suggests salmon survival

at any flow (up to 7,000 cfs), could be further improved with a physical HORB compared to survival with a non-physical barrier or without a physical HORB. Results from studies in 2012, although not yet available, may provide additional information on the benefits of the physical HORB (with eight culverts), but river flows were lower in 2012 than in 2010 so results will not be directly comparable. Present information suggests a physical HORB would increase the survival of juvenile salmon at Vernalis flows of up to 7,000 cfs. However, exports may need to be decreased accordingly to avoid increasing negative Old and Middle river flows and ensure the protection of delta smelt. Another alternative is the Board could model and evaluate San Joaquin River inflow criteria from 60% to 75% of unimpaired flow, and assess whether the flows at Vernalis would be greater than 5,000 cfs more frequently.

Given the trend of decreasing survival and the uncertainty of the specific flow levels needed to meet the Board's narrative objective and immediate goal of halting the decline of native fish populations, continued monitoring of Chinook salmon survival is critical to assure the flow criteria and other management actions result in increased Delta survival rates for Chinook salmon originating from the San Joaquin Basin. Furthermore a robust, continuous, well-funded, long-term monitoring program measuring juvenile salmon survival in the Delta will inform models and future adaptive management of flow criteria for juvenile salmon.

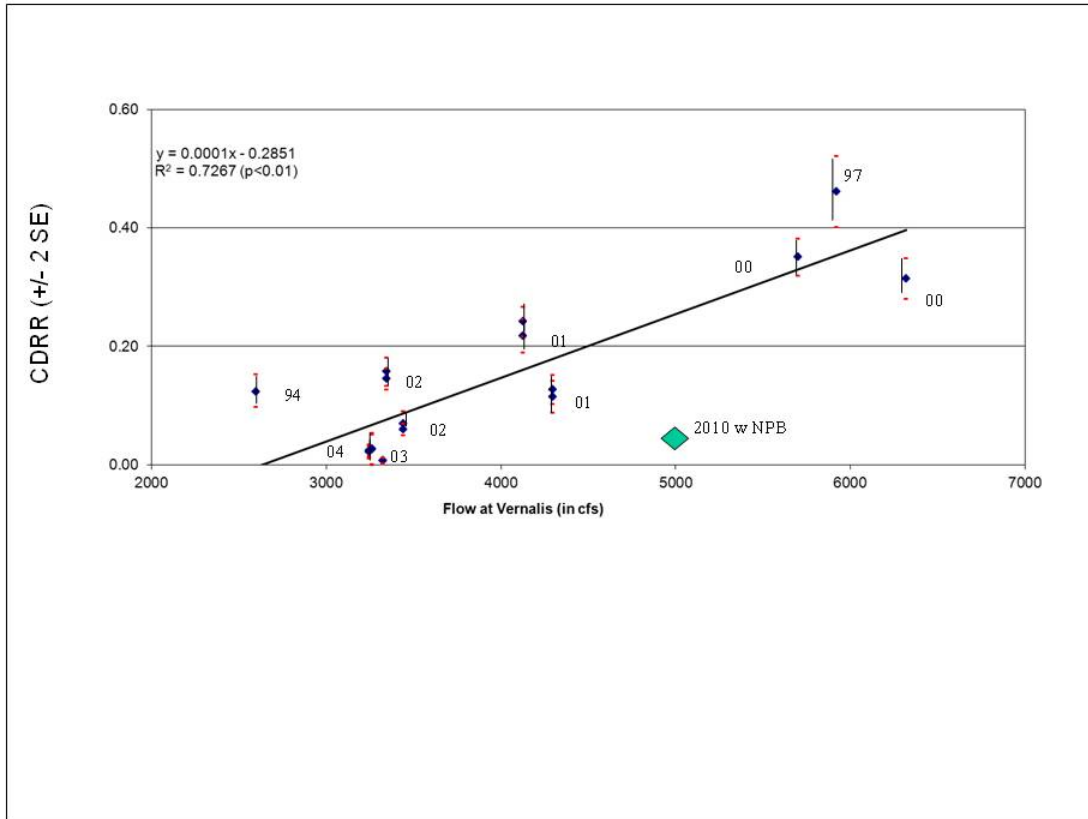


Figure 6: Combined Differential Recovery Rates (point estimates of survival) plus and minus 2 standard errors using Chipps Island, Antioch and ocean recoveries, for groups released at Mossdale or Durham Ferry and Jersey Point in 1994, 1997, 2000-2004 and average flow at Vernalis in cfs for 10 days starting the day of the Mossdale release or the day after the Durham Ferry release with the HORB in place (SJRG, 2007). Survival through the Delta in 2010 is also shown and includes survival measured with the non-physical barrier at the head of Old River (SJRG, 2011).

Once the VAMP agreement expired in 2011, funding was lost for estimating juvenile Chinook salmon survival through the Delta for salmon originating from the San Joaquin Basin. In 2012, stop-gap funding was found for the spring studies from a variety of sources, but no such funding exists for 2013. While the 2009 Staff Report (SWRCB, 2009, page 31) identifies VAMP monitoring as ongoing, it is no longer planned for the future, unless additional funding is secured.

Monitoring of juvenile salmon survival through the Delta for salmon originating from the San Joaquin Basin has been occurring in most years since 1994. It provides a historical perspective of the range of estimated smolt survival through the Delta and is the basis for present modeling, including Bay Delta Conservation

Plan (BDCP) related evaluations of San Joaquin Basin juvenile salmon survival in Delta. Additional monitoring of juvenile Chinook salmon survival is needed to further resolve the relationship between flow and exports, juvenile salmon survival through the south Delta with and without a HORB or non-physical barrier, and for determining the role of other covariates affecting survival. The Service believes continued monitoring of juvenile Chinook salmon survival in the Delta is critical to assessing present and future flow and export/inflow criteria. Although the NMFS biological opinion mandates a 6-year acoustic study for steelhead, it will not have the longer-term historic record of Chinook salmon survival for perspective. Both salmon and steelhead acoustic studies conducted in the south Delta in 2011 and 2012 will provide additional information that the Board and Board Staff should review, but these reports are not yet available. The results from these studies should also be used to help determine appropriate Old and Middle River flow criteria to assure juvenile salmonids from the San Joaquin Basin are able to migrate successfully through the Delta to Chipps Island.

One mechanism for the high mortality in the Delta, especially in the south Delta, is predation. In our February 8, 2011 comments to the Board (DOI, 2011, pages 35 and 36) we discuss the interaction between predation and flow and indicate that if spring flows originating from the San Joaquin River are increased, predation will decrease and survival of juvenile salmon in the south Delta will improve.

Furthermore, increased predation-related mortality in the south Delta is related to changes in south Delta habitat related to the high export/inflow ratios between July and September. The Service suggests the Board fully evaluate a range of flow regimes including reducing the export/inflow ratio during the summer and fall months. Moyle and Bennett (2008, page 14), discuss below how a change in timing of freshwater in the Delta has shifted the ecosystem from one benefiting native species to one dominated by non-native species, including non-native predators of juvenile salmonids.

“This shift presumably occurred as a result of the long-term (slow) process of steadily increasing pumping rates over time which requires the maintenance of freshwater conditions in the Delta during summer (Figure D.3), as well as the relatively rapid invasion by Brazilian waterweed and other factors that favored slough-resident (e.g., centrarchid species) and freshwater alien planktivore (e.g., inland silverside) fish assemblages. Species in these assemblages may suppress populations of desirable species through competition and predation (Bennett and Moyle 1996), and/or their expansion may reflect an overall shrinkage in brackish pelagic habitat required by native smelt and juvenile striped bass (Feyrer et al. 2007; Nobriga et al. 2008).

This scenario is similar to those reported for temperate freshwater lakes where interactions between multiple processes operating at different temporal scales work together to shift a “desirable” clear-water regime with abundant aquatic vegetation and centrarchid fishes to an “undesirable” turbid-water regime with less vegetation and abundant planktivorous fishes (Carpenter 2003, Scheffer and Carpenter 2003, Folke et al. 2004, Rogers and Allen 2008). Once the shift to turbid water has occurred, it is very hard for the lakes to switch back to a clear-water state. (The obvious difference here is that the desirable regime for the Delta is the opposite of the one for temperate lakes.) The lake examples imply considerable ability for ecosystem states to persist even when the cause of the shift to a different state is removed. Likewise, even with a shift of the current water management strategy, it will be very difficult for the Delta ecosystem to shift back to the desirable regime (i.e., one with abundant pelagic native fishes) due to the habitat-stabilizing properties of the Brazilian waterweed and life history strategies (e.g. longer life spans) of the centrarchid fishes.

Overall, the present state of the system will most likely continue as long as the Delta maintains its present configuration and water management practices. “ (Moyle and Bennett, 2008).

If the south Delta were returned to more riverine/estuarine habitat, as it was historically, instead of its more lake-like environment today, it would likely reduce the production of warm water predators and submerged aquatic vegetation and improve the survival of juvenile salmonids migrating through the south Delta in the spring.

Non-native invasive species like Brazilian waterweed and Asian clams have radically altered delta food webs, and thrive in the homogeneous flow and salinity environment. The Board should explore the efficacy of providing a more heterogeneous salinity environment that exceeds the salt tolerances of these non-native species, while still ensuring appropriate conditions for native species.

Additionally, the Central Valley Project Improvement Act’s Anadromous Fish Restoration Program is implementing a study to determine the geographic distribution of the mortality of juvenile salmonids in the lower Stanislaus River (USFWS, unpublished data). Initial results indicate that survival of juvenile salmonids migrating through the lower Stanislaus River (between Oakdale and Caswell) is 0.07 (S.E. 0.03). A report documenting the study results will be forthcoming. Other similar studies evaluating juvenile Chinook salmon and predator movement in response to flow are currently being implemented in the Tuolumne River (TID and MID, 2011). Results from these and other such studies should be used to help determine what Vernalis flows should be and how inflows from each San Joaquin Basin tributary may influence juvenile salmon survival.

In their written comments to this proceeding, the California Department of Fish and Game provides support for modifying water quality objectives in the 2006 Plan to incorporate additional Delta Cross Channel gate closures. We also provided comments on new information supporting additional Delta Cross Channel closures in our April, 25, 2012 comments (DOI, 2012). In addition, Reclamation drafted an environmental assessment describing the benefits of closing the Delta Cross Channel gates for up to 10 days in October to decrease straying of adult Chinook salmon returning to the Mokelumne River (USBR, 2012). We suggest the Board review and consider this new information in relation to modification of Delta Cross Channel gate closures when revising the 2006 Water Quality Control Plan.

Lastly, several articles have been published in the last year that may help the Board and Board staff as they consider potential changes to the Bay-Delta Plan. They are:

1. *“Migration route selection of juvenile Chinook salmon at the Delta Cross Channel, and the role of water velocity and individual movement patterns”* by Anna E. Steel, Philip T. Sandstrom, Patricia L. Brandes, A.Peter Klimley, in *Environmental Biology of Fishes*, DOI 10.1007/s10641-012-9992-6. Published online 05 April 2012.
2. *“Sensitivity of survival to migration routes used by juvenile Chinook salmon to negotiate the Sacramento-San Joaquin River Delta”* by Russell W. Perry, Patricia L. Brandes, Jon R. Burau, A.Peter Klimley, Bruce MacFarlane, Cyril Michel and John R. Skalski. *Environmental Biology of Fishes*, DOI 10.1007/s10641-012-9984-6 Published online 10 February 2012.
3. *“Adjusting survival estimates for premature transmitter failure: a case study from the Sacramento-San Joaquin Delta”* by Christopher M. Holbrook, Russell, W. Perry, Patricia L. Brandes and Noah S. Adams, *Environmental Biology of Fishes*, DOI 10.1007/s10641-012-0016-3. Published online 25 April 2012.
4. *“Interannual variation of reach specific migratory success for Sacramento River hatchery yearling late-fall run Chinook salmon (*Oncorhynchus tshawytscha*) and steelhead trout (*Oncorhynchus mykiss*)”* by Gabriel P. Singer, Alex R. Hearn, Eric D. Chapman, Matthew L. Peterson, Peter E. LaCivita, William N. Brostoff, Allison Bremner and A.P. Klimley.

Environmental Biology of Fishes. DOI 10.1007/s10641-012-0037-y.
Published online on 22 May 2012.

5. “*Diel movements of out-migrating Chinook salmon (Oncorhynchus tshawytscha) and steelhead trout (Oncorhynchus mykiss) smolts in the Sacramento/San Joaquin watershed*” by Eric D. Chapman, Alex R. Hearn, Cyril J. Michel, Arnold J. Ammann, Steven T. Lindley, Michael J. Thomas, Philip T. Sandstrom, Gabriel P. Singer, Matthew L. Peterson, R. Bruce MacFarlane, A. Peter Klimley, Environmental Biology of Fishes. DOI 10.1007/s10641-012-0001-x. Published online 29 March 2012.
6. “*The effects of environmental factors on the migratory movement patterns of Sacramento River yearling late-fall run Chinook salmon (Oncorhynchus tshawytscha)*” by Cyril J. Michel, Arnold J. Ammann, Eric D. Chapman, Phillip T. Sandstrom, Heidi E. Fish, Michael J. Thomas, Gabriel P. Singer, Steven T. Lindley, Al Peter Klimley, R. Bruce MacFarlane. Environmental Biology of Fishes DOI 10.1007/s10641-012-9990-8. Published online 15 April 2012.
7. “*Effects of predator and flow manipulation of Chinook salmon (Oncorhynchus tshawytscha) survival in an imperiled estuary*”, by Bradley Cavallo, Joseph Merz and Jose Setka. Environmental Biology of Fishes. DOI 10.1007/s10641-012-9993-5.
8. “*Impending extinction of salmon, steelhead and trout (Salmonidae) in California*” by Jacob Katz, Peter B. Moyle, Rebecca M Quinones, Joshua Israel, and Sabra Purdy. Environmental Biology of Fishes, DOI 10.1007/s10641-012-9974-8. Published online 31 January 2012.

How should the State Water Board address scientific uncertainty and changing circumstances, including climate change, invasive species and other issues?

The Service believes the Board should address scientific uncertainty and changing circumstances, including climate change, invasive species and other issues (BDCP), within an adaptive management plan. The Department of Interior’s (DOI) December 6, 2010 comments on the Board’s draft technical report stated

"There is uncertainty in our understanding of how flow and salinity will affect future biological beneficial uses, consequently decisions must be made with uncertainty. Because of these uncertainties, any San Joaquin River flow objectives should be implemented, then evaluated and refined over time (adaptive management) to ensure the lessons learned are used to further refine the management of flows and salinity for meeting biological goals." (DOI, 2010a). Although there is uncertainty, there is evidence that increased flows will benefit native fishes, including salmonids by increasing survival through the Delta. The Board should identify biological goals and objectives and then use an adaptive management program to further define and refine how to achieve those goals and objectives.. All available indicators demonstrate the continued decline of the Central Valley salmonid populations. Consequently, the Board should consider a more protective approach, while development of an adequate adaptive management program proceeds.

Specifically, what kind of adaptive management and collaboration (short, medium and long-term), monitoring and special studies programs should the State Water Board consider related to Bay-Delta fisheries as part of this update to the Bay-Delta Plan?

We suggest the Board review the most recent DOI publication on adaptive management where several examples of successful adaptive management are documented. The DOI publication: Adaptive Management: The U.S. Department of the Interior Applications Guide (Williams et al., 2012), is in addition to the previously recommended and referenced DOI publication: Adaptive Management: The U.S. Department of the Interior Technical Guide (Williams et al., 2007)(DOI, 2010a; DOI, 2010b; DOI, 2011; DOI, 2012). These two documents will help the Board and Board Staff identify key components of a successful adaptive management program. Both documents can be obtained at: <http://www.doi.gov/ppa/Adaptive-Management.cfm>. These documents are especially applicable to criteria where the scientific underpinnings need further study.

Specific biological indicators should be incorporated into the goals and objectives to guide the monitoring and special studies program and to inform adaptive management. Biological objectives have been identified in the flow criteria report (SWRCB, 2010, page 43) as:

1. Provide sufficient flow to increase abundance of desirable species that depend on the Delta.
2. Create shallow brackish water habitat in Suisun Bay (and further downstream)
3. Provide floodplain inundation to enhance spawning and rearing opportunities for salmon and other native species.
4. Manage net OMR, and reverse flows to protect sensitive life stages of desirable species.
5. Provide sufficient flow in the Sacramento and San Joaquin Rivers and East side streams, to transport smolts through the Delta during the spring to contribute to Board's salmon protection water quality objective.
6. Maintain water temperatures and dissolved oxygen in rivers that flow into the Delta and its tributaries that will support adult Chinook salmon migration, egg incubation, smolting and early-year and late-year juvenile rearing.

However, to fully evaluate the flow criteria, and adaptively manage them, specific biological and physical indicators need to be identified. For example, how much increase in the abundance of desirable species is sufficient and how will it be determined if sensitive life stages of desirable species have been protected by net Old and Middle River flows? Identifying the level of protection the Board is targeting will help scientists determine if it is being achieved and will help resource managers adaptively manage the flow criteria to ultimately achieve those levels of protection. Monitoring (and funding for monitoring) should be identified to track the success or failure of the flow criteria using biological indicators and to provide a basis for future adaptive management of the flow criteria. We do not see where these biological and physical indicators have been identified in the Board's documents. While we see that there is discussion on biological indicators in the 2009 Staff Report (SWRCB, 2009, pages 46-48), we believe identifying specific biological indicators will help develop flow criteria and support the implementation of adaptive management.

The Service has suggested targeting an average of 0.50 (50%) survival through the Delta for salmon originating from the San Joaquin basin, to provide the needed survival through the Delta for meeting the CVPIA doubling goal within 30 years, given average survival in other aspects of the life-history (DOI, 2011, page 18). Similar goals and estimates of smolt survival should be developed for the Sacramento River and the San Francisco Bay. Also, catch per cubic meter at Chipps Island and near Sacramento, and abundance estimates at Mossdale provide

historic measurement of juvenile production that can be used as monitoring metrics and can be compared to future indices. However, the Board should not assume present monitoring will continue given that current monitoring programs are not fully funded.

The Service supports the Board's management objectives to;

1. Combine flow needs comprehensively,
2. Establish mechanisms to evaluate Delta environmental conditions, periodically review underpinnings of the biological objectives and flow criteria, and change biological objectives and flow criteria when warranted,
3. Review new research and monitoring to modify biological objectives and flow criteria,
4. Not recommend overly complex flow criteria as not to infer a greater understanding of specific numeric flow criteria than available science supports.

But we suggest the Board further specify how these management objectives will be achieved.

References Cited:

Brandes, P.L., Burmester, R., and J. Speegle. 2006. Estimating relative abundance and survival of juvenile Chinook salmon in the Sacramento-San Joaquin Estuary. *Interagency Ecological Program Newsletter*, Vol. 19, No. 2, Spring 2006 pp 41-46.

Brandes P.L. and McLain, J.S. 2001. Juvenile Chinook salmon abundance, distribution and survival in the Sacramento-San Joaquin Estuary. *Contributions to the Biology of Central Valley Salmonids*. California Department of Fish and Game Fish Bulletin 179, Volume 2.

Hankin, D., Dauble, D., Pizzimentietti, J.J., Smith, P. 2010. The Vernalis Adaptive Mangement Program (VAMP): Report of the 2010 Review Panel. May 2010

Harvey, B. personal communication. California Department of Water Resources. Email from Brett Harvey to Li-Ming He, on 8/28/12 indicating final report on genetics data collected at the State Water Project and Central Valley Project will be completed by the week of September 17, 2012.

Hedgecock, D. 2002. Microsatellite DNA for the Management and Protection of California's Central Valley Chinook Salmon (*Oncorhynchus tshawytscha*). Final report for the Amendment of Agreement No. B-59638. University of California, Davis. Bodega Marin Laboratory. 23 pp.

Kormos B, M Palmer-Zwahlen, and Alice Low. 2010. Recovery of Coded-Wire Tags from Chinook Salmon in California's Central Valley Escapement and Ocean Harvest in 2010. California Department of Fish and Game Fisheries Branch Administrative Report 2012-02, March 2012. 41 pp.
(<https://nrm.dfg.ca.gov/FileHandler.ashx?DocumentID=44306>)

Moyle, P.,B., and W.A. Bennett, 2008. The Future of the Delta Ecosystem and Its Fish. Technical Appendix D. Comparing Futures for the Sacramento-San Joaquin Delta. Public Policy institute of California. San Francisco, CA 1-38.

San Joaquin River Group Authority (SJRGa). 2007. 2006 Annual Technical Report: On Implementation and Monitoring of the San Joaquin River Agreement and the Vernalis Adaptive Management Plan. 137 pp.

San Joaquin River Group Authority (SJRG), 2011. 2010 Annual Technical Report on Implementation and Monitoring of the San Joaquin River Agreement and the Vernalis Adaptive Management Plan (VAMP). Prepared for the California Water Resources Control Board I ncompliance with D-1641. September 2011.

State Water Resources Control Board, 2009. Staff Report, Periodic Review of the 2006 Water Quality Control Plan for the San Francisco Bay/Sacramento-San Joaquin Delta Estuary. Adopted by Resolution 2009-0065. August 4, 2009.

State Water Resources Control Board, 2010. Development of Flow Criteria for the Sacramento-San Joaquin Delta Ecosystem. August 3, 2010.

Turlock Irrigation District and Modesto Irrigation District. 2011. Don Pedro Project FERC No. 2299, Revised Study Plan, Appendices. November 2011. 725 pp.

U.S. Bureau of Reclamation, 2012. Delta Cross Channel Temporary Closure Multi-year Study, Draft Environmental Assessment. August 2012. 23 pp.

U.S. Department of Interior (DOI), 2010a. Comments on Draft Technical Report on the Scientific Basis for Alternative San Joaquin River Flow and Southern Delta Salinity Objectives, submitted to the California State Water Resources Control Board, December 6, 2010 12 pp

U.S. Department of Interior (DOI), 2010b. Comments Regarding the California State Water Resources Control Board's Notice of Public Information Proceeding to Develop Delta flow Criteria for the Delta Ecosystem Necessary to Protect Public Trust Resources, submitted to the California State Water Resources Control Board, February 12, 2010 84 pp.

U.S. Department of Interior (DOI), 2011. Comments on the Review of and Potential Modifications to the San Joaquin River Flow and Southern Delta Salinity Objectives Included in the 2006 Water Quality Control Plan for the San Francisco Bay/Sacramento-San Joaquin Delta Estuary, submitted to the California State Water Resources Control Board, February 8, 2011 55 pp.

U.S. Department of Interior (DOI), 2012. Comments on the Environmental Documentaiton for the Update and Implementation of the Water Quality Control Plan for the San Francisco Bay/Sacramento-San Joaquin Delta Estuary:

Comprehensive Review, submitted to the California State Water Resources Control Board, April 25, 2012 52 pp

U.S. Fish and Wildlife Service. 1987. The needs of Chinook salmon, *Oncorhynchus tshawytscha*, in the Sacramento-San Joaquin Estuary. Exhibit 31 to the State Water Resources Control Board 1987 Water Quality/Water Rights Proceeding on the San Francisco Bay/Sacramento-San Joaquin Delta.

Williams B.K., and E.D. Brown. 2012. Adaptive Management: The U.S. Department of the Interior Applications Guide. Adaptive Management Working Group, U.S. Department of the Interior, Washington DC. 120 pp

Williams B.K., R.C. Szaro, and C.D. Shapiro. 2007. Adaptive Management: The U.S. Department of the Interior Technical Guide. Adaptive Management Working Group, U.S. Department of the Interior, Washington, DC. 72 pp