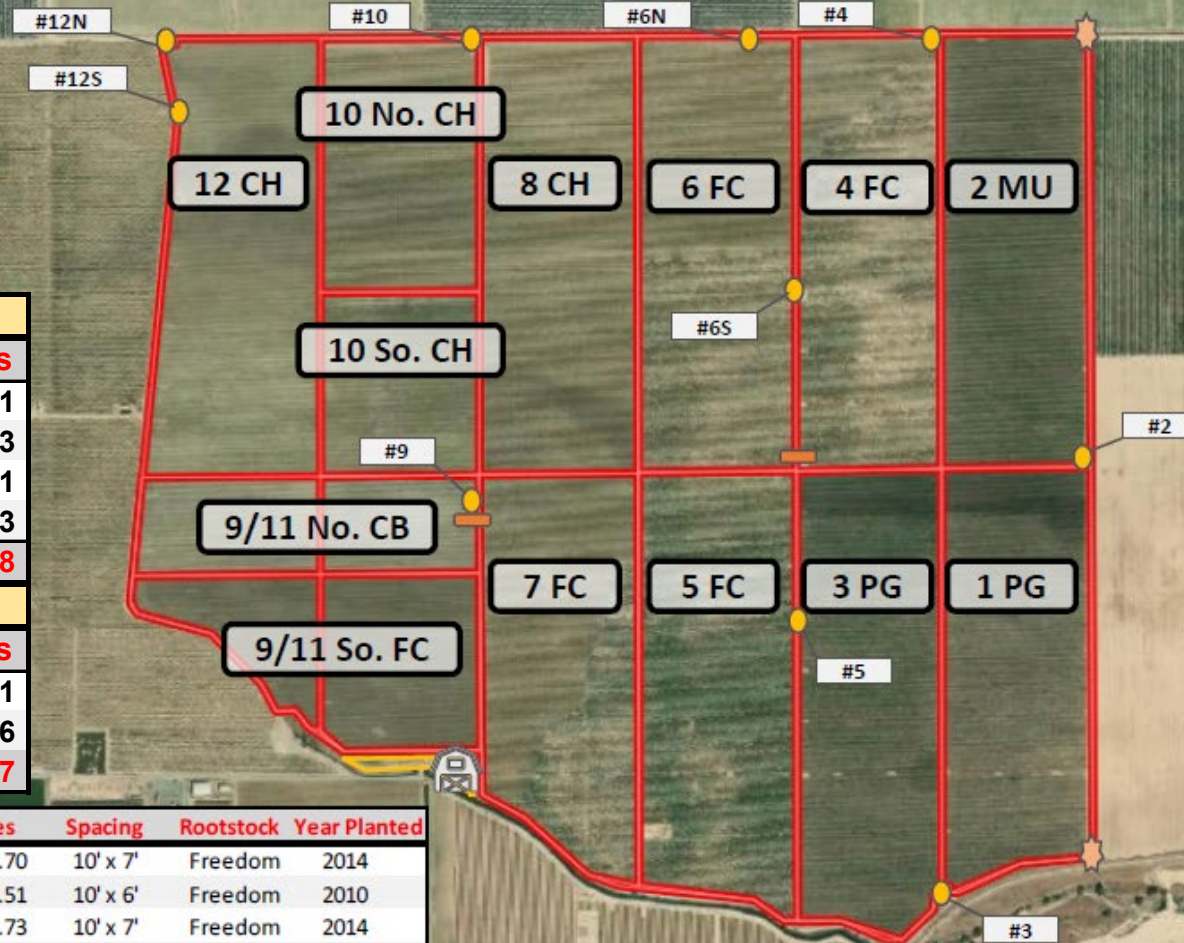


Sundried Farms, LLC (Gravelly Ford)

County: Madera

Water District: Aliso Water District

Water Coalition: East San Joaquin Water Quality Coalition (ESJWQ)



Bearing

Variety	Acres
Chardonnay	107.61
Chenin Blanc	36.93
Muscat of Alexandria	69.51
Pinot Grigio	136.43
Total Bearing Acres:	350.48

Non-Bearing

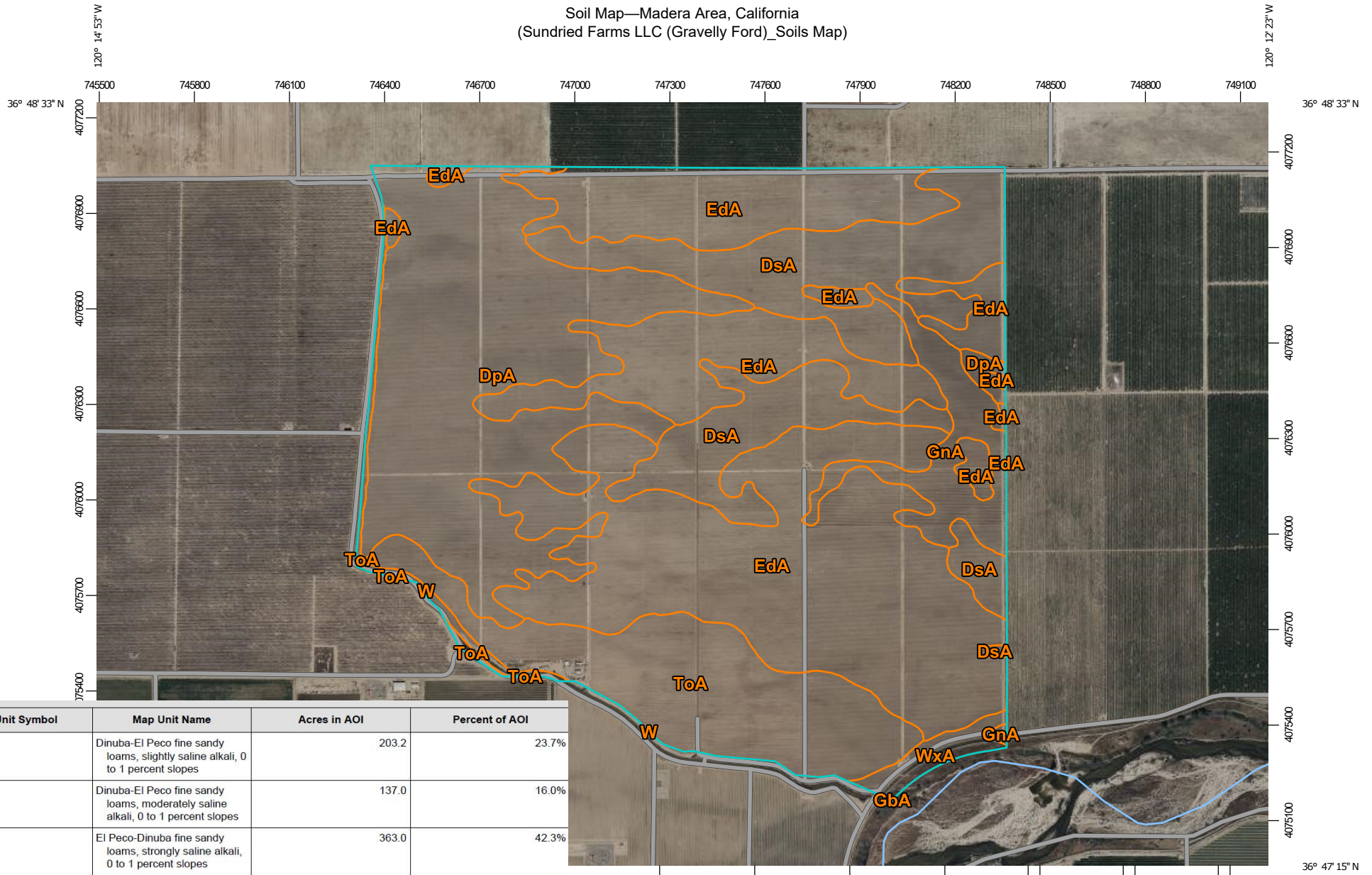
Variety	Acres
Chardonnay	117.31
French Colombard	326.56
Total Non-Bearing Acres:	443.87

Block #	Variety	Acres	Spacing	Rootstock	Year Planted
1 PG	Pinot Grigio	64.70	10' x 7'	Freedom	2014
2 MU	Muscat of Alexandria	69.51	10' x 6'	Freedom	2010
3 PG	Pinot Grigio	71.73	10' x 7'	Freedom	2014
4 FC	French Colombard	67.17	10' x 7'	Freedom	2021
5 FC	French Colombard	74.13	10' x 7'	Freedom	2021
6 FC	French Colombard	73.88	10' x 7'	Freedom	2021
7 FC	French Colombard	64.11	10' x 7'	Freedom	2021
8 CH	Chardonnay	74.88	10' x 6'	Freedom	2021
9/11 North CB	Chenin Blanc	36.93	10' x 6'	Freedom	2014
9/11 South FC	French Colombard	47.27	10' x 7'	Freedom	2021
10 North CH	Chardonnay	42.43	10' x 6'	Freedom	2021
10 South CH	Chardonnay	31.43	10' x 6'	Freedom	2010
12 CH	Chardonnay	76.18	10' x 7'	Freedom	2010

Total Planted Acres: 794.35

	Well
	Filter Station
	Shop
	Gate/Entrance

Soil Map—Madera Area, California
(Sundried Farms LLC (Gravelly Ford)_Soils Map)



Map Unit Symbol	Map Unit Name	Acres in AOI	Percent of AOI
DpA	Dinuba-El Peco fine sandy loams, slightly saline alkali, 0 to 1 percent slopes	203.2	23.7%
DsA	Dinuba-El Peco fine sandy loams, moderately saline alkali, 0 to 1 percent slopes	137.0	16.0%
EdA	El Peco-Dinuba fine sandy loams, strongly saline alkali, 0 to 1 percent slopes	363.0	42.3%
GbA	Grangeville fine sandy loam, slightly saline-alkali, 0 to 1 percent slopes	0.0	0.0%
GnA	Grangeville sandy loam, slightly saline-alkali, 0 to 1 percent slopes	35.9	4.2%
ToA	Traver loam, strongly saline-alkali, 0 to 1 percent slopes	102.2	11.9%
W	Water	7.4	0.9%
WxA	Wunje very fine sandy loam, strongly saline-alkali, 0 to 1 percent slopes	10.3	1.2%
Totals for Area of Interest		859.0	100.0%

