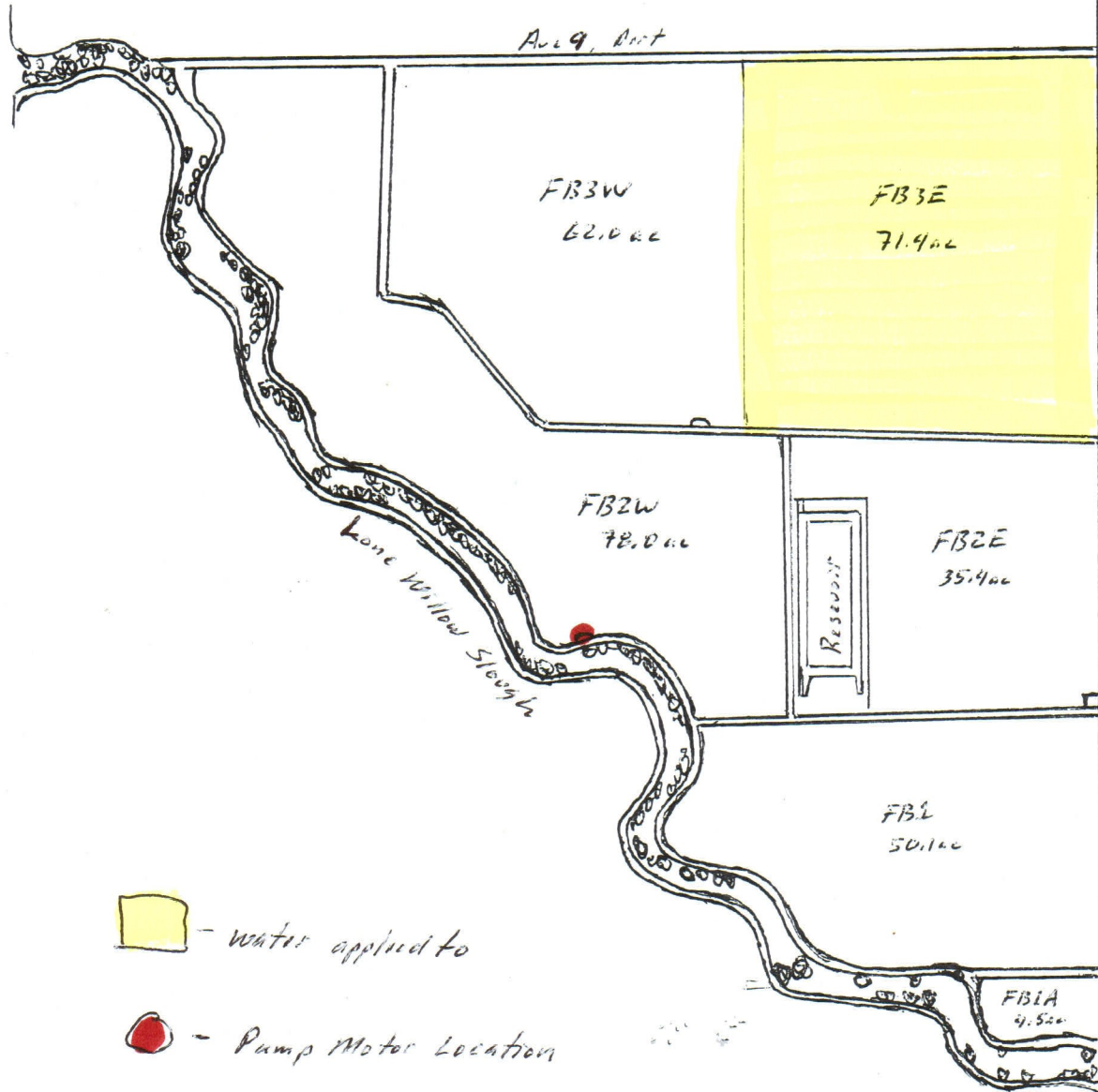


John E. Lasgorty

Firebaugh Ranch, Madison County
NE 1/2 of Sec 24, T12S, R14E



Road 9 - Hemlock Road




 **BERMAD**



MC406



www.bermad.com

 **BERMAD**
MODEL: MC406
SERIAL: 12345678
DATE: 2023-10-27
TIME: 10:30 AM
LOCATION: FIELD SITE

 **BERMAD**



MC406

8888 180.3
0.00 m gal

