

MAP OF
THE WEST SIDE IRRIGATION DISTRICT
SAN JOAQUIN COUNTY, CALIFORNIA

Intake Canal

See Photo 1 and 2

See Photo 3

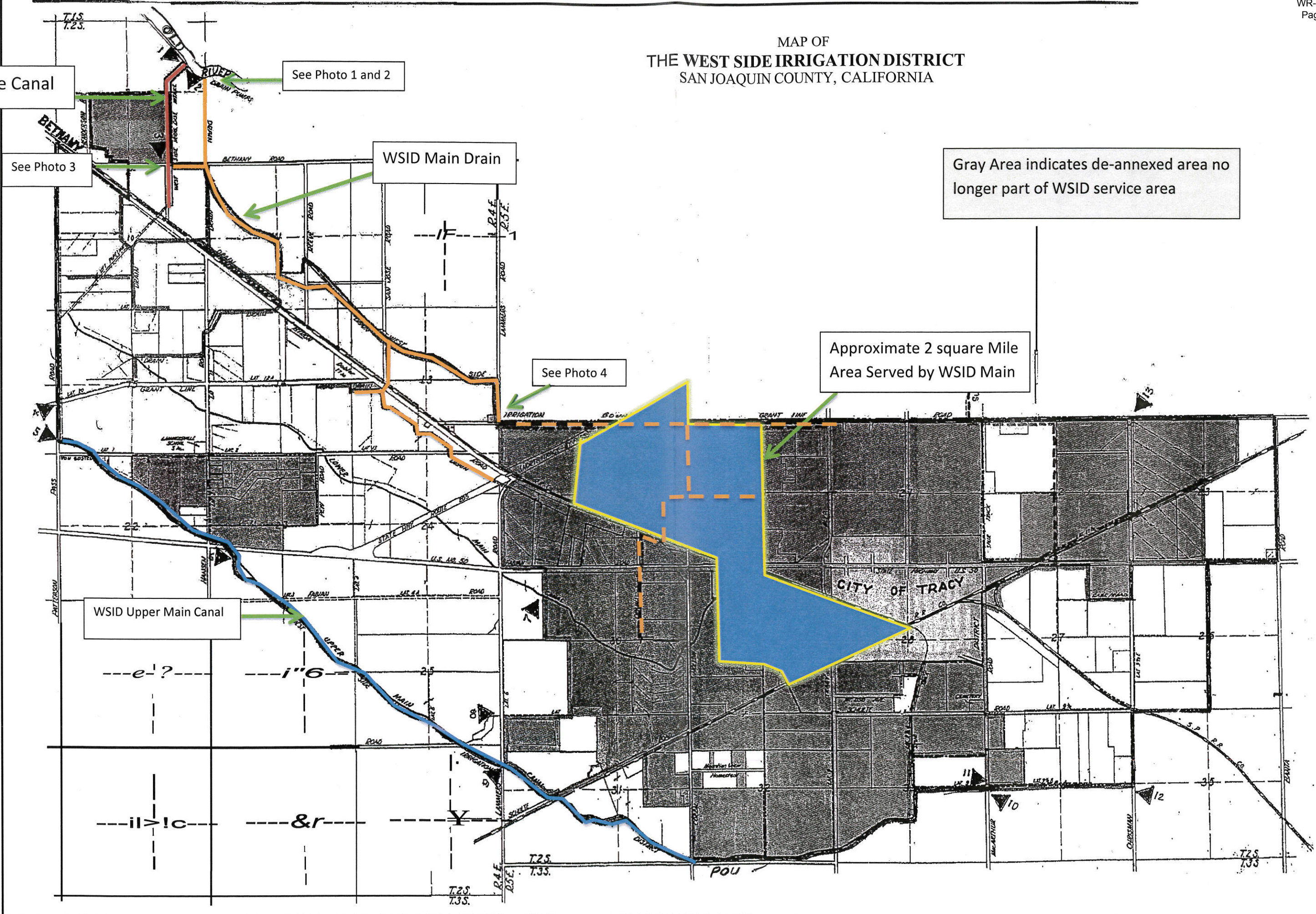
WSID Main Drain

Gray Area indicates de-annexed area no longer part of WSID service area

See Photo 4

Approximate 2 square Mile Area Served by WSID Main

WSID Upper Main Canal



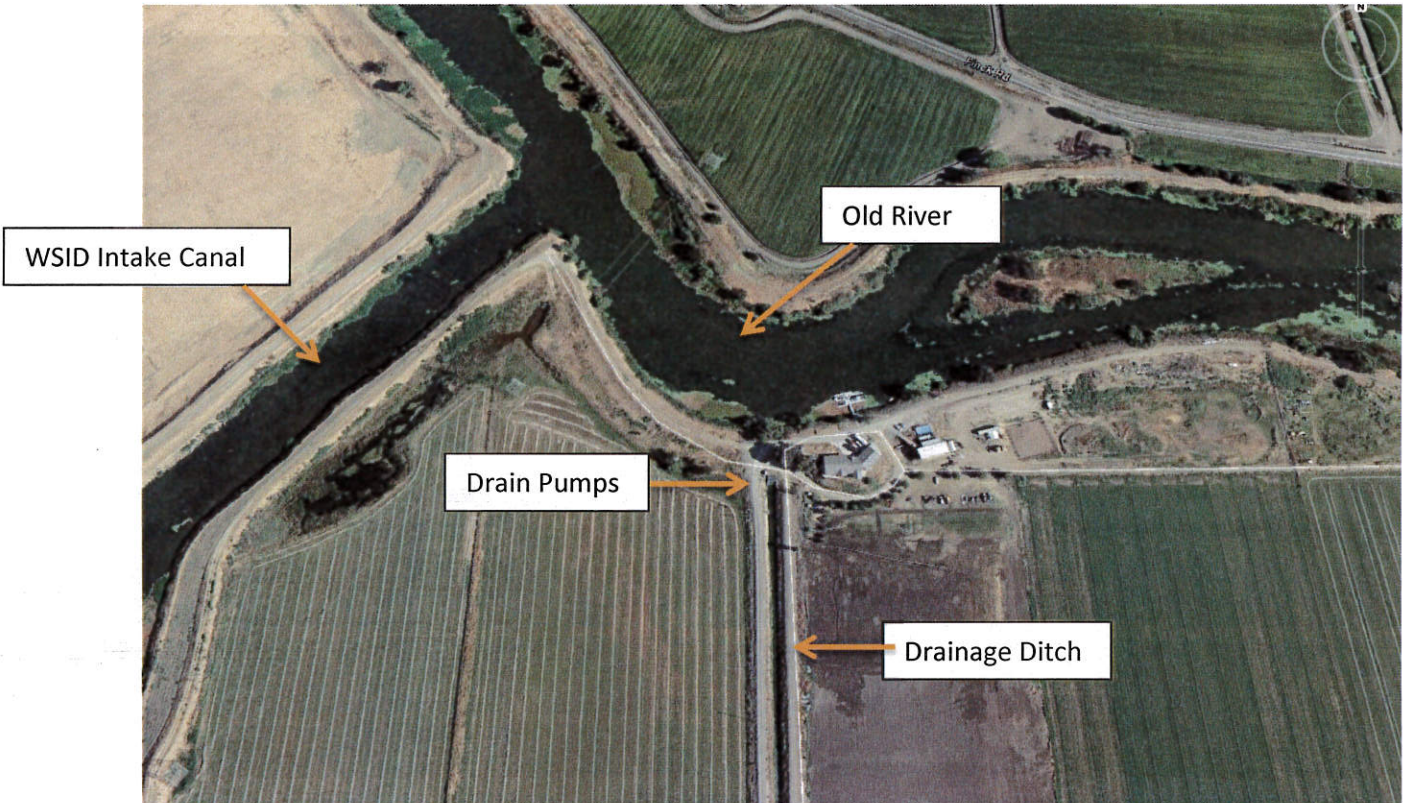


Photo 1 – Drain Pumps at Old River



Photo 2 – Close-up of Drain Pumps in Photo 1 (photo 8/26/2015)

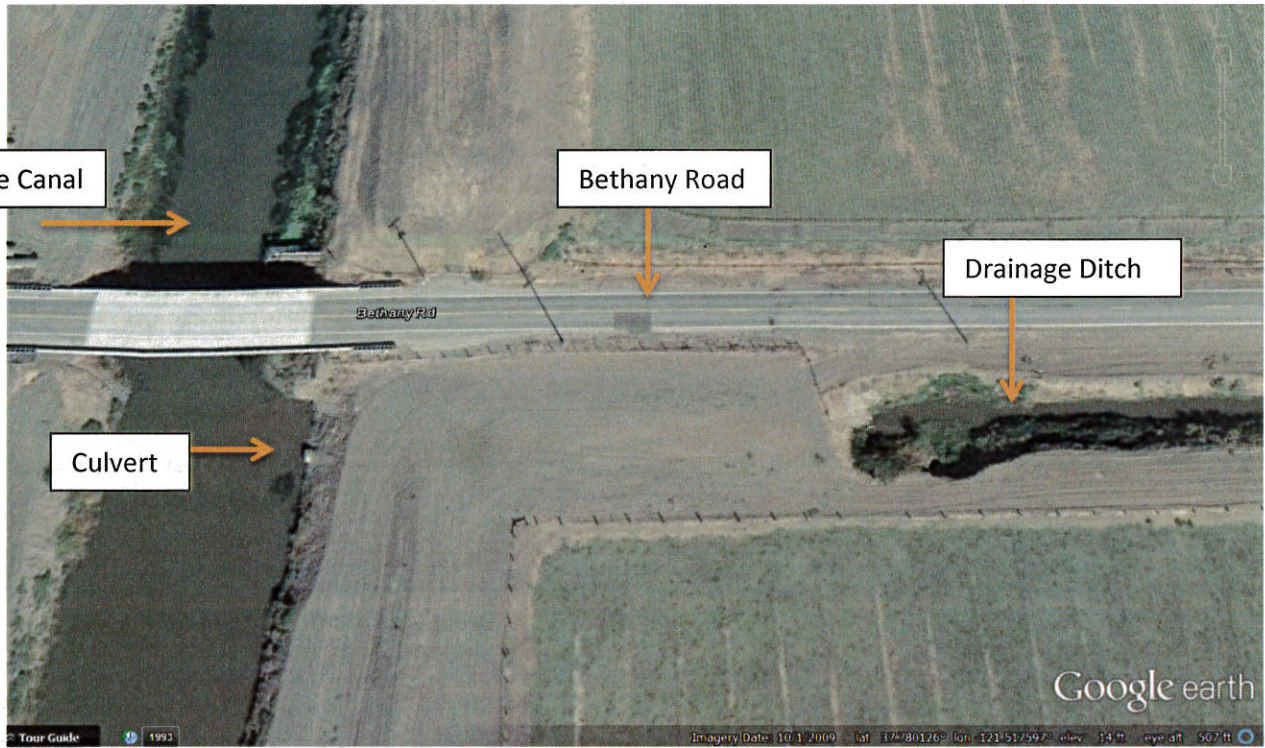


Photo 3 – Intake Channel – Drainage Drain – Culvert (Photo Date 10/1/2009)

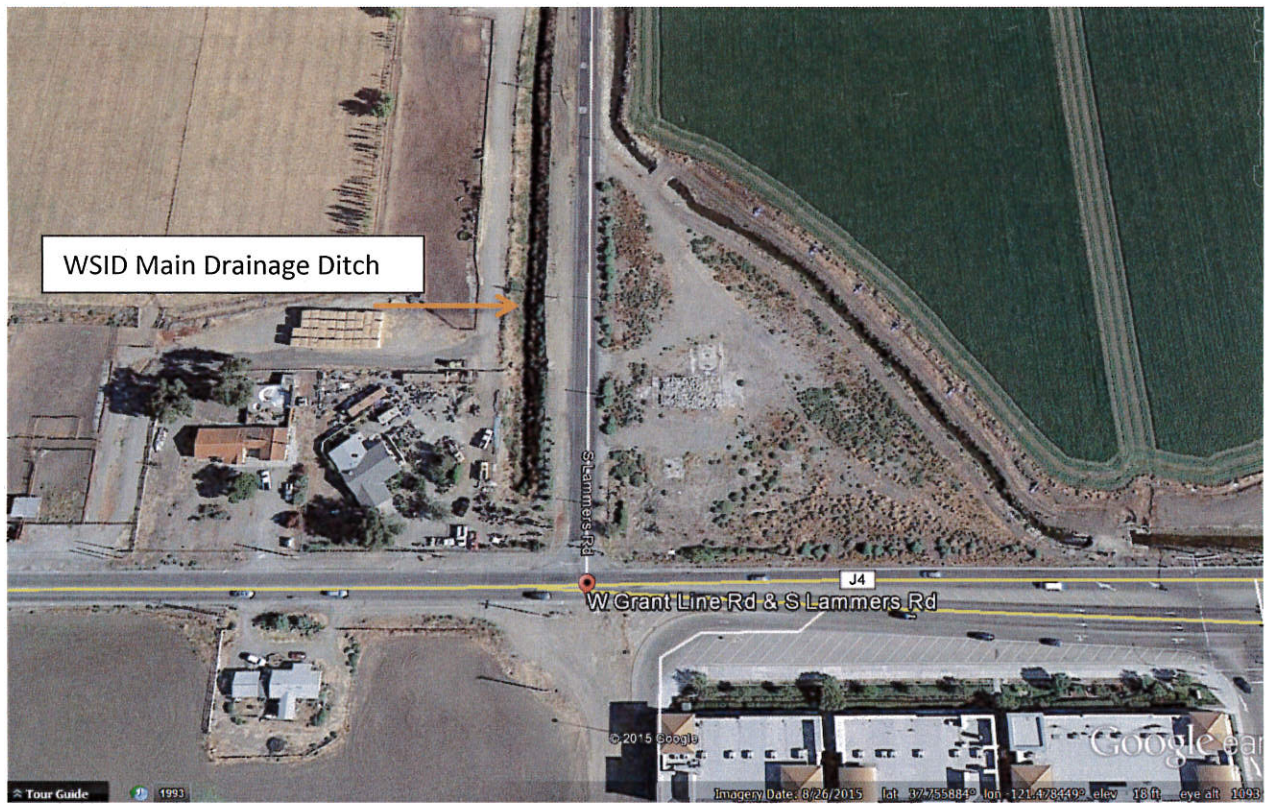


Photo 4 – W. Grant Line Road and S. Lammers Road (Photo Date 8/26/2015)