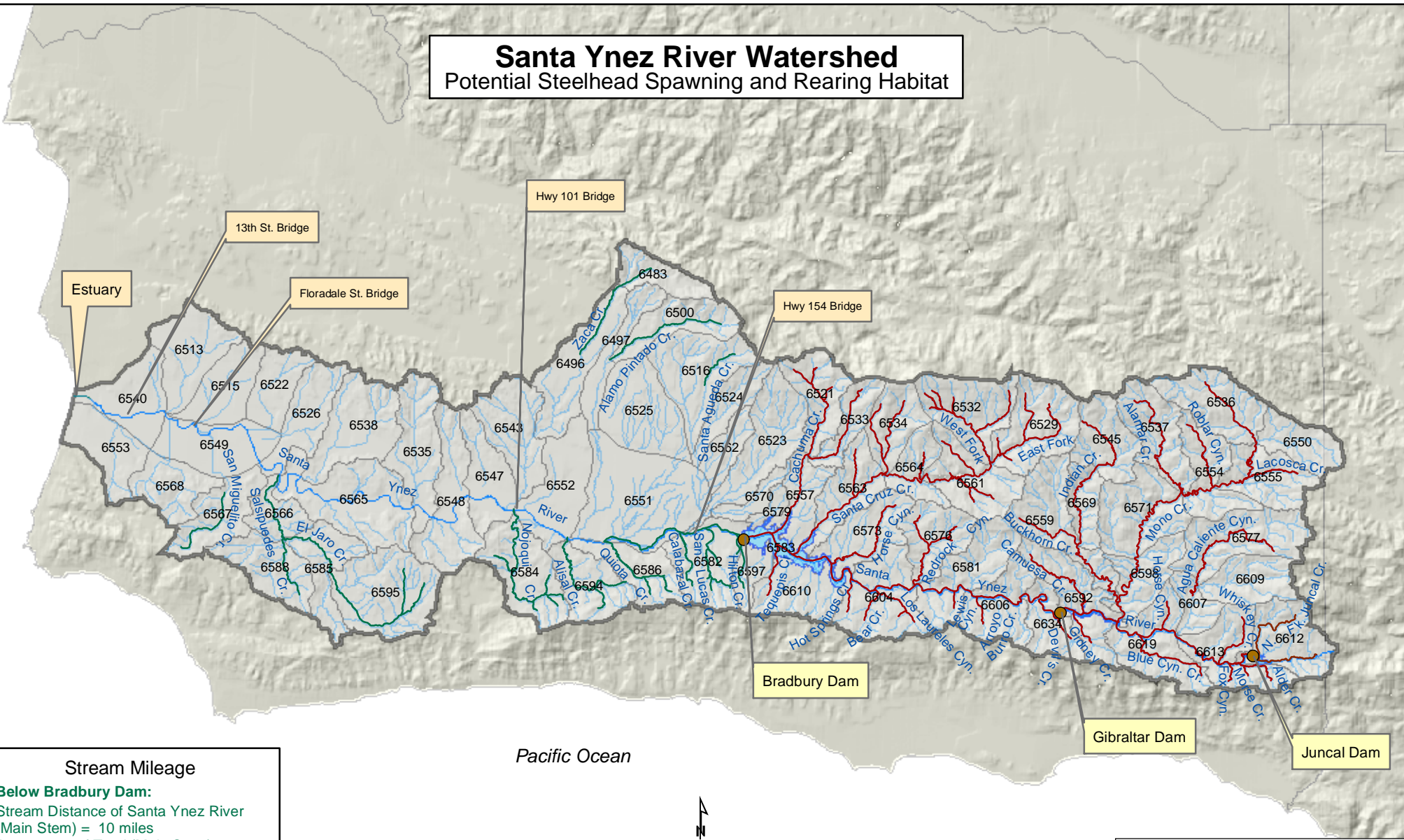


Santa Ynez River Watershed

Potential Steelhead Spawning and Rearing Habitat

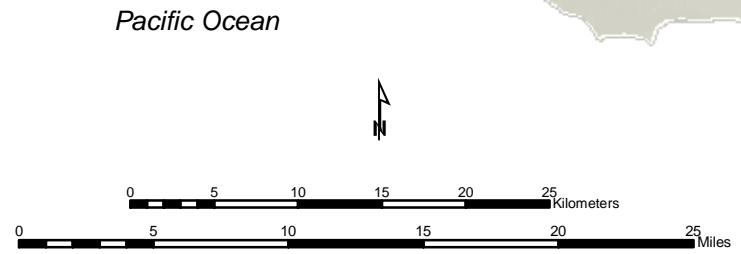



Stream Mileage

Below Bradbury Dam:
 Stream Distance of Santa Ynez River (Main Stem) = 10 miles
 Percentage of Total (Main Stem) = 19%
 Stream Distance of Selected Tributaries (Including Santa Ynez River) = 99 miles
 Percentage of Total = 29%

Above Bradbury Dam:
 Stream Distance of Santa Ynez River (Main Stem) = 43 miles
 Percentage of Total (Main Stem) = 81%
 Stream Distance of Selected Tributaries (Including Santa Ynez River) = 248 miles
 Percentage of Total = 71%

Note: See the accompanying table and text document for more information regarding stream distances and the map design process.




 Scale: 1:450,000
 Projection: Teale-Albers
 Map produced by E. Chavez
 NOAA Fisheries, Long Beach, CA

Legend

- Dams
- Downstream Tributaries
- Upstream Tributaries
- Other Streams
- Waterbodies
- Planning Watershed Boundaries (CalWater 2.2 6th Field)
- Federal 4th Field HUC
- County Boundary