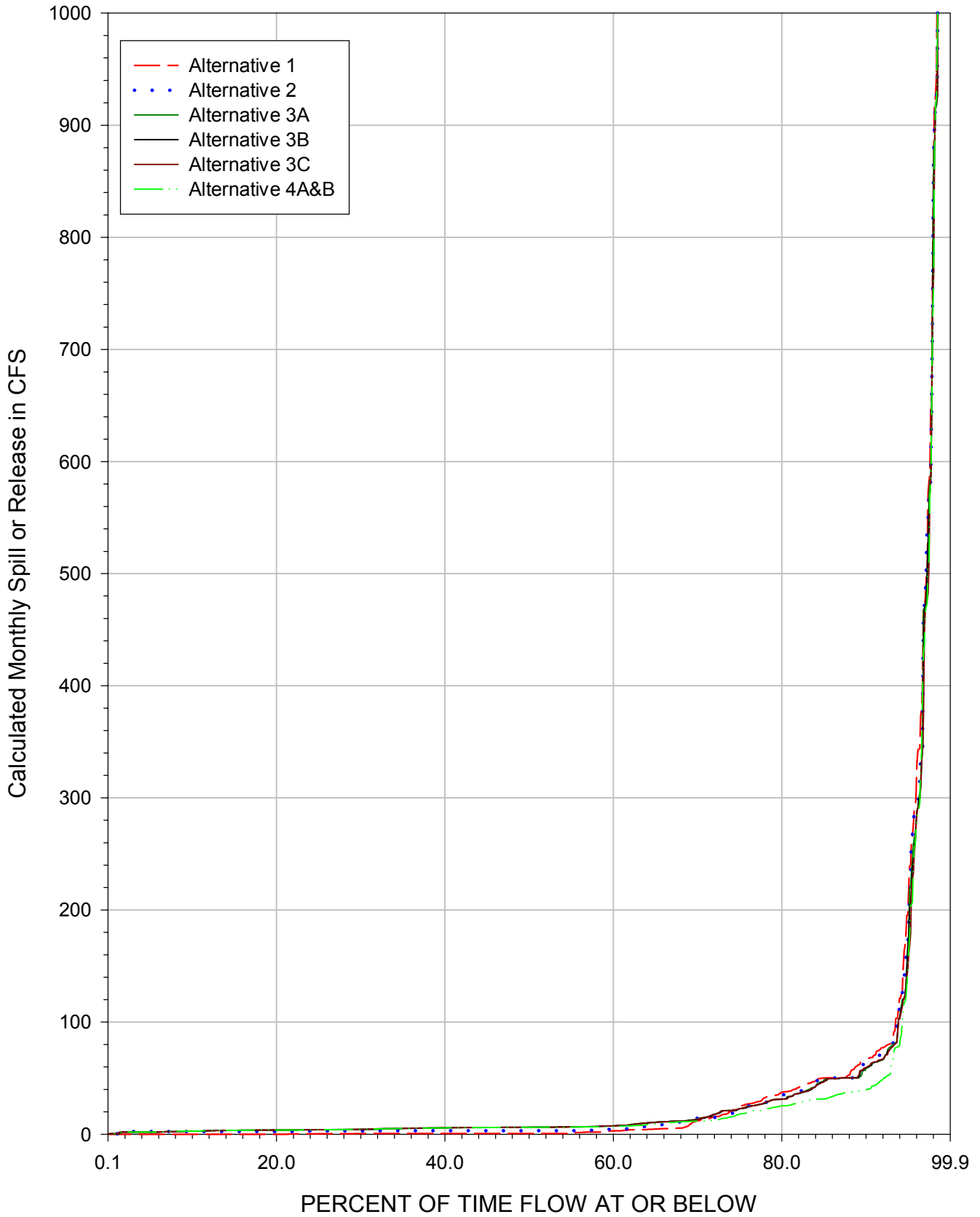
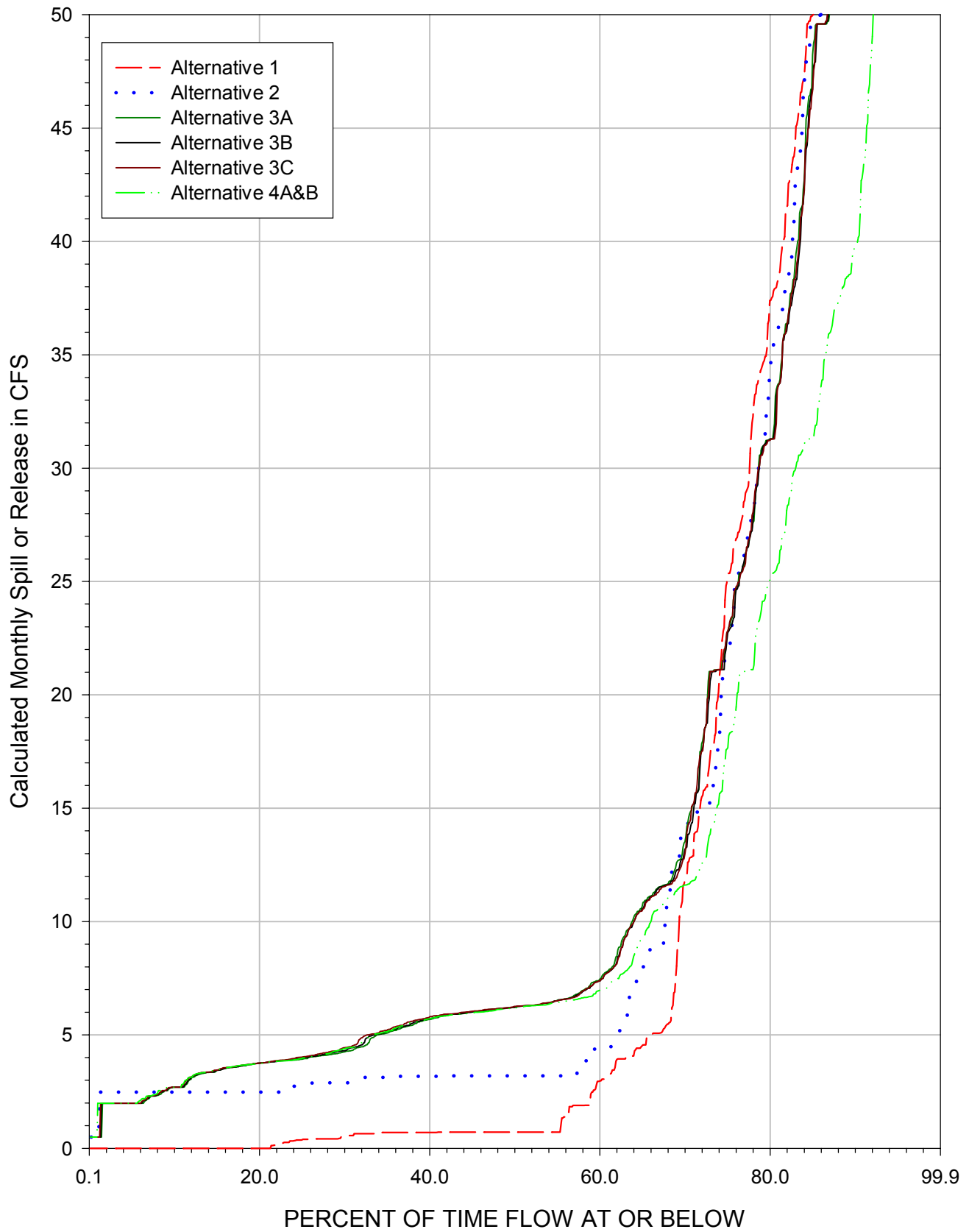


# FREQUENCY OF SPILLS AND DOWNSTREAM RELEASES FROM CACHUMA RESERVOIR (WY 1918-1993)

FIGURE 3-1A

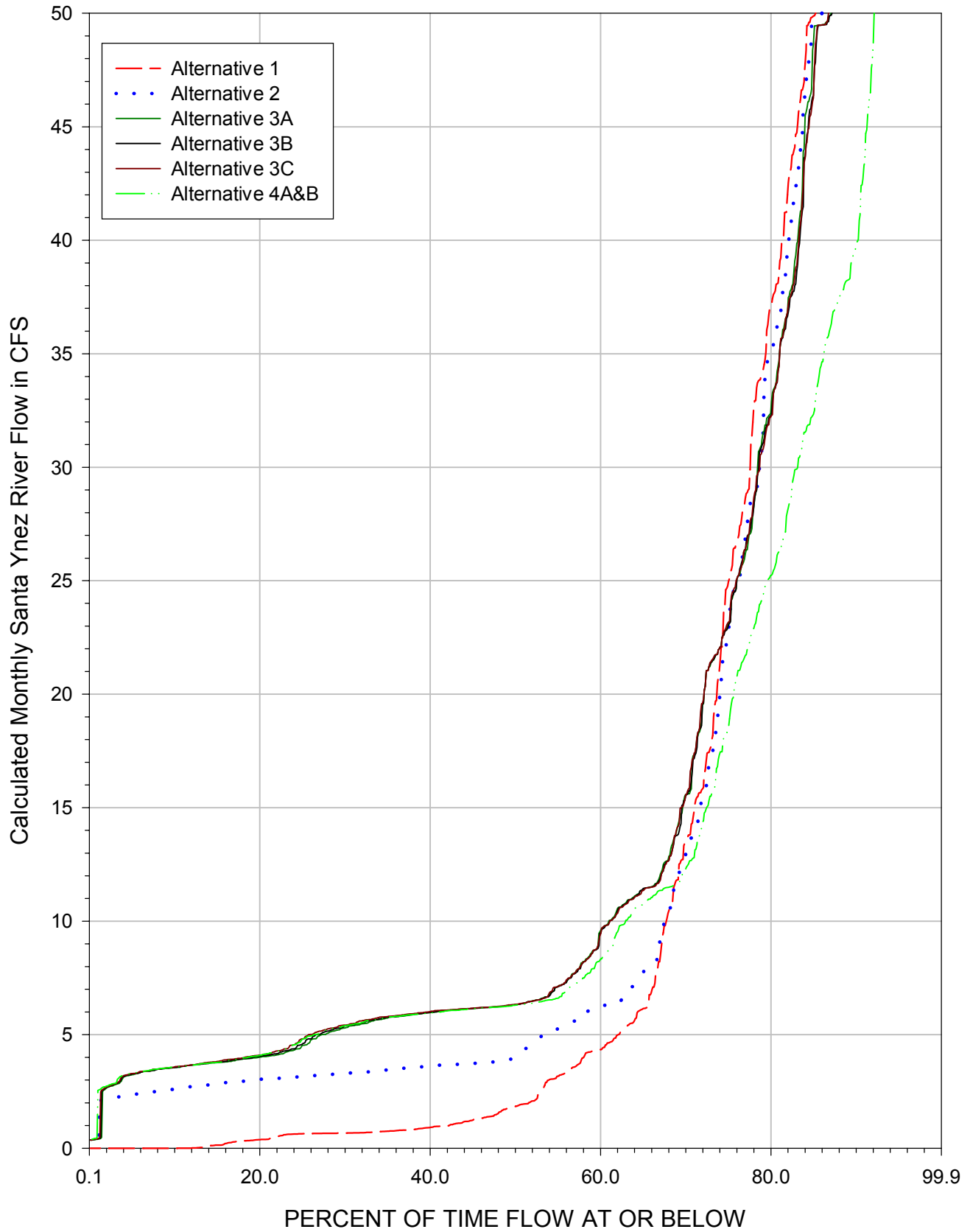


# FREQUENCY OF SPILLS AND DOWNSTREAM RELEASES FROM CACHUMA RESERVOIR (WY 1918-1993)



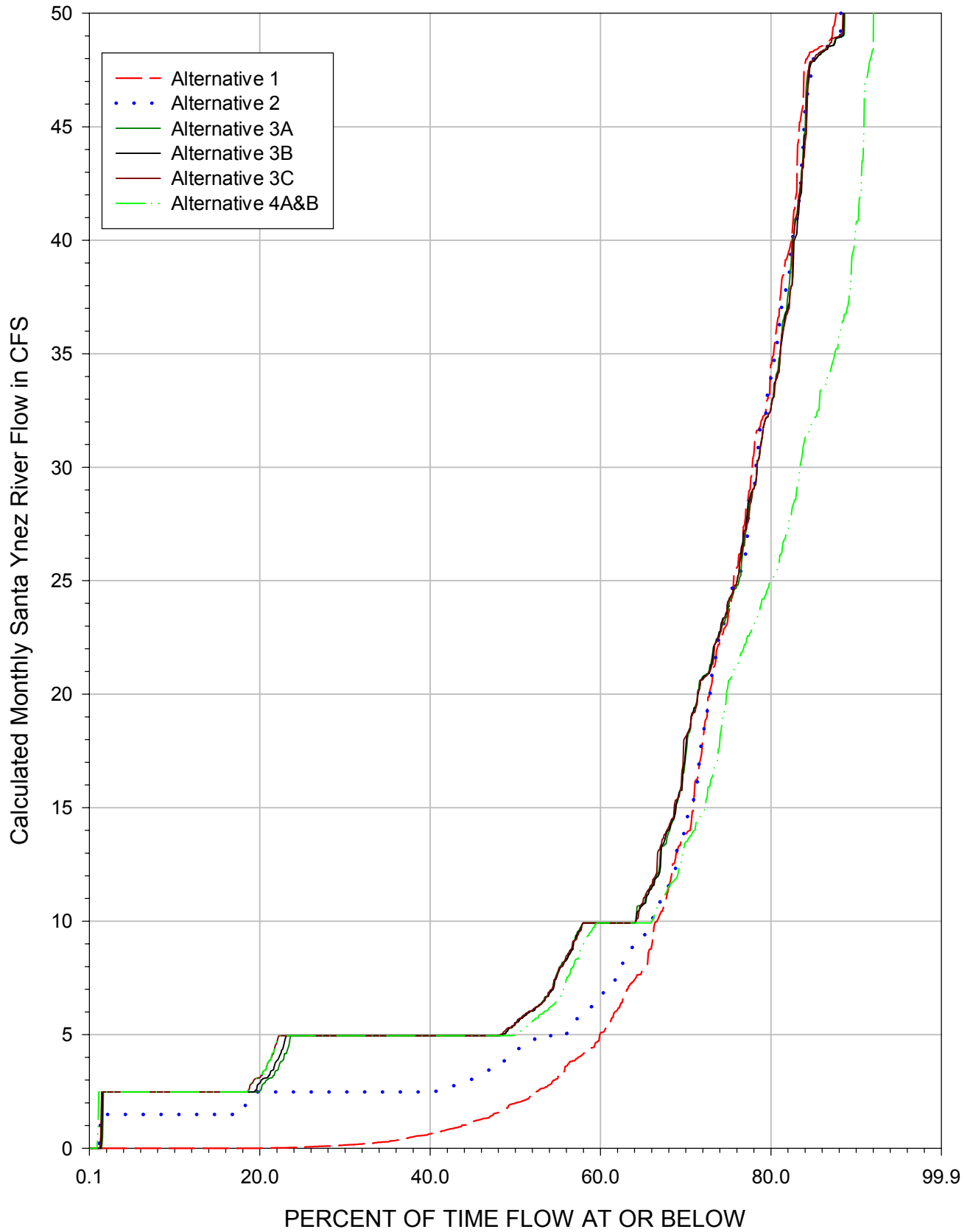
# FREQUENCY OF SANTA YNEZ RIVER FLOW BELOW HILTON CREEK (WY 1918-1993)

FIGURE 3-2A

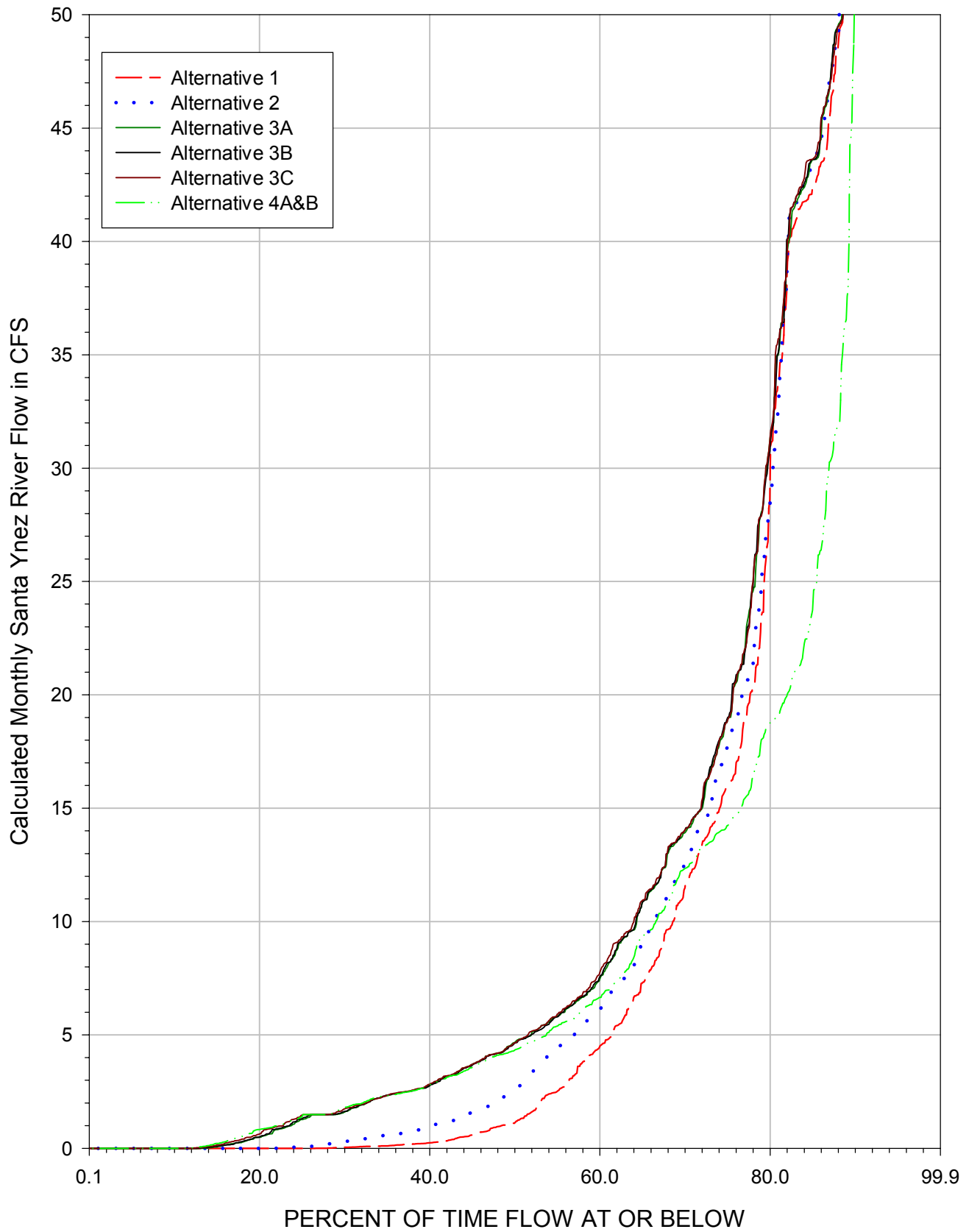


# FREQUENCY OF SANTA YNEZ RIVER FLOW AT 154 BRIDGE (WY 1918-1993)

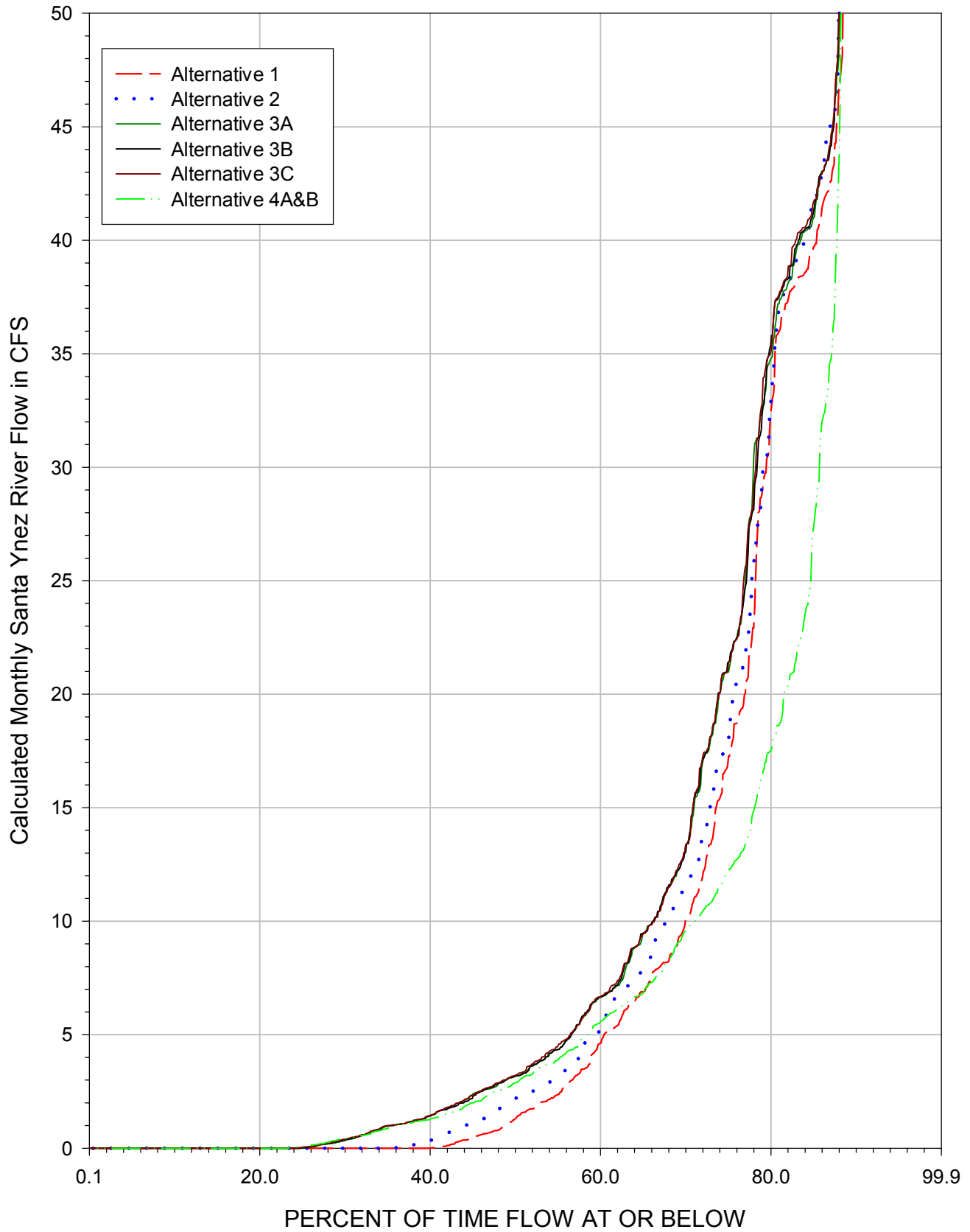
FIGURE 3-2B



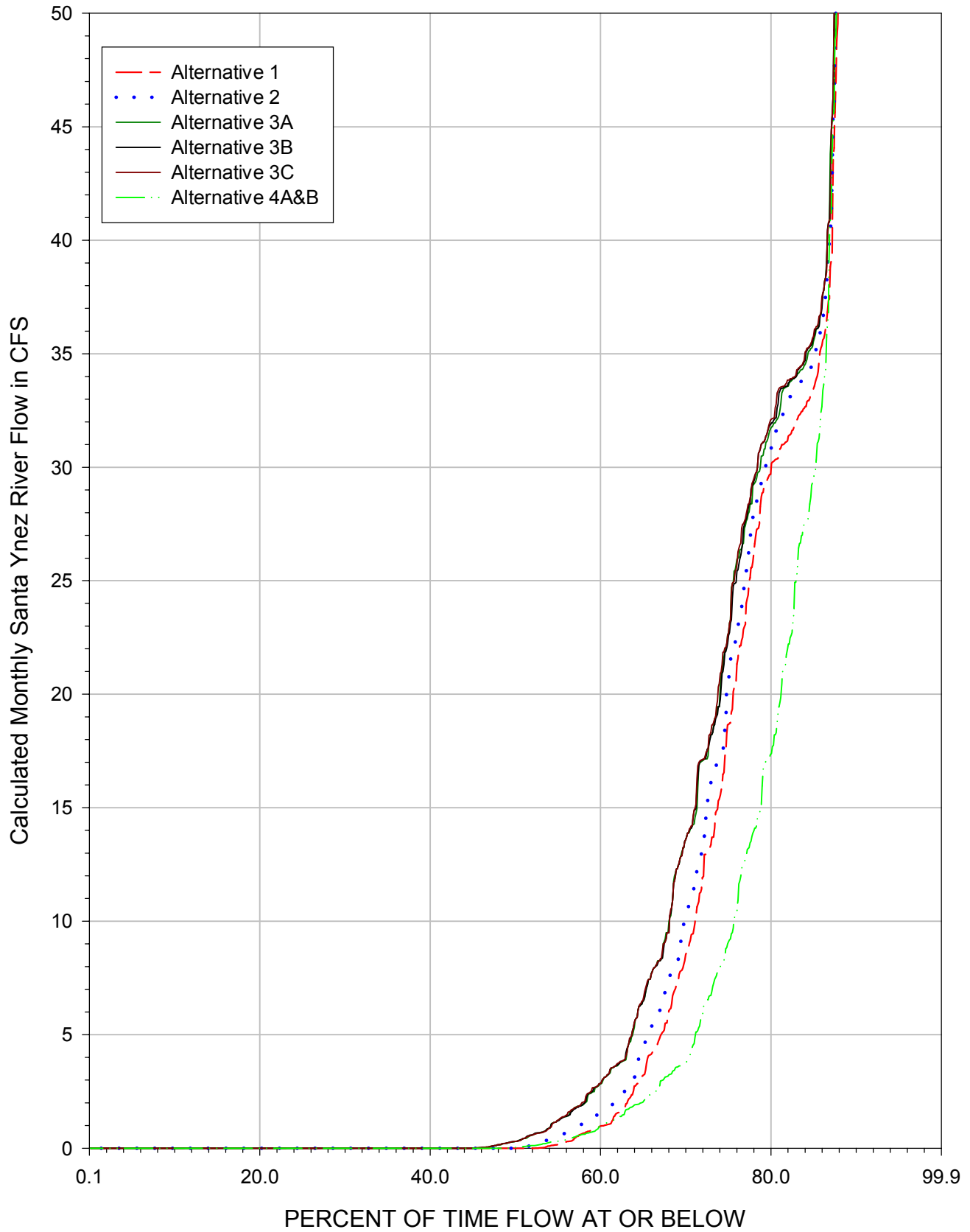
### FREQUENCY OF SANTA YNEZ RIVER FLOW ABOVE ALISAL BRIDGE (WY 1918-1993)



### FREQUENCY OF SANTA YNEZ RIVER FLOW NEAR BUELLTON (WY 1918-1993)

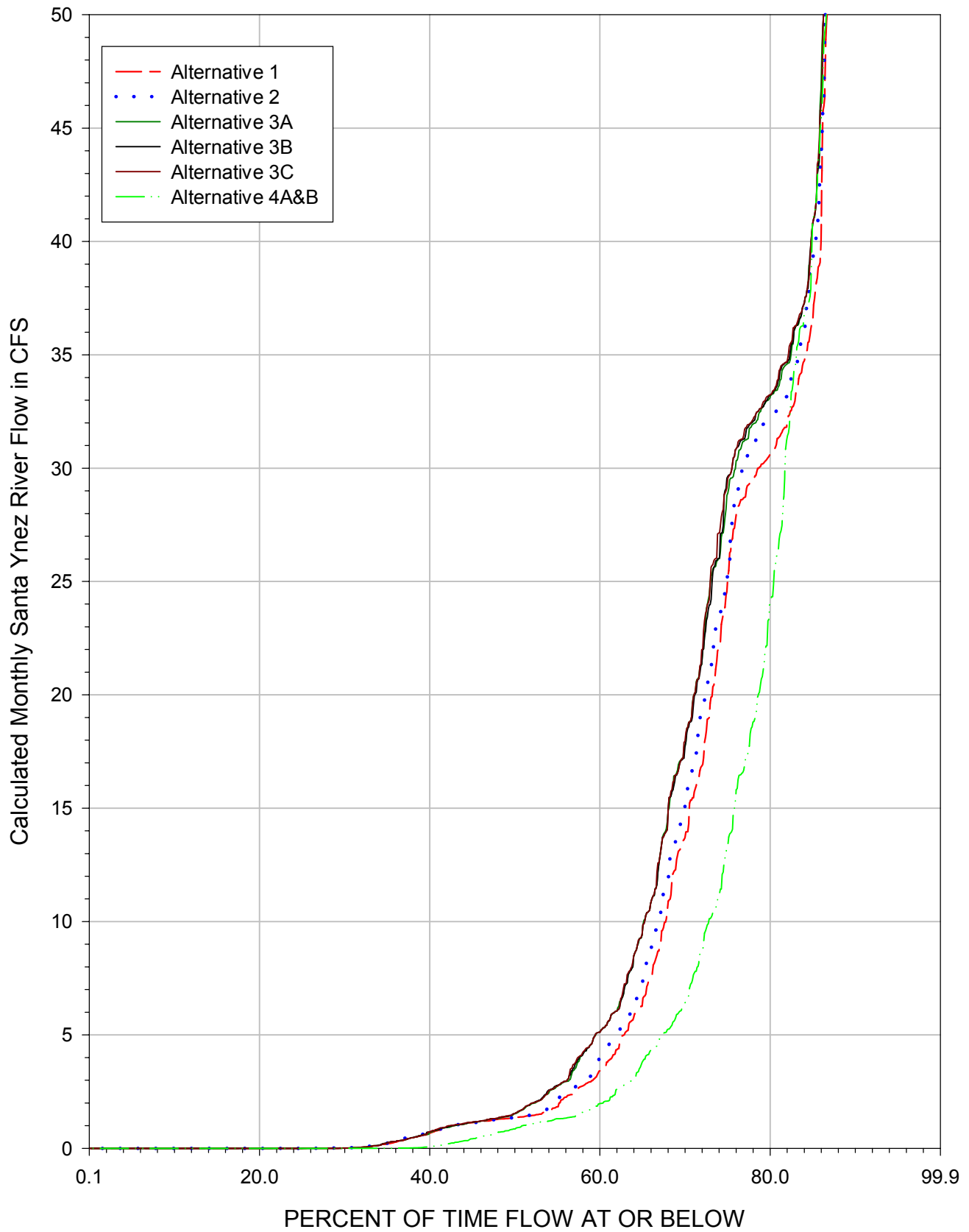


### FREQUENCY OF SANTA YNEZ RIVER FLOW ABOVE SALSIPUEDES CREEK CONFLUENCE (WY 1918-1993)



# FREQUENCY OF SANTA YNEZ RIVER FLOW AT LOMPOC NARROWS (WY 1918-1993)

FIGURE 3-2F





### SIMULATED CACHUMA RESERVOIR STORAGE FOR VARIOUS EIR ALTERNATIVES USING SYRHM0498

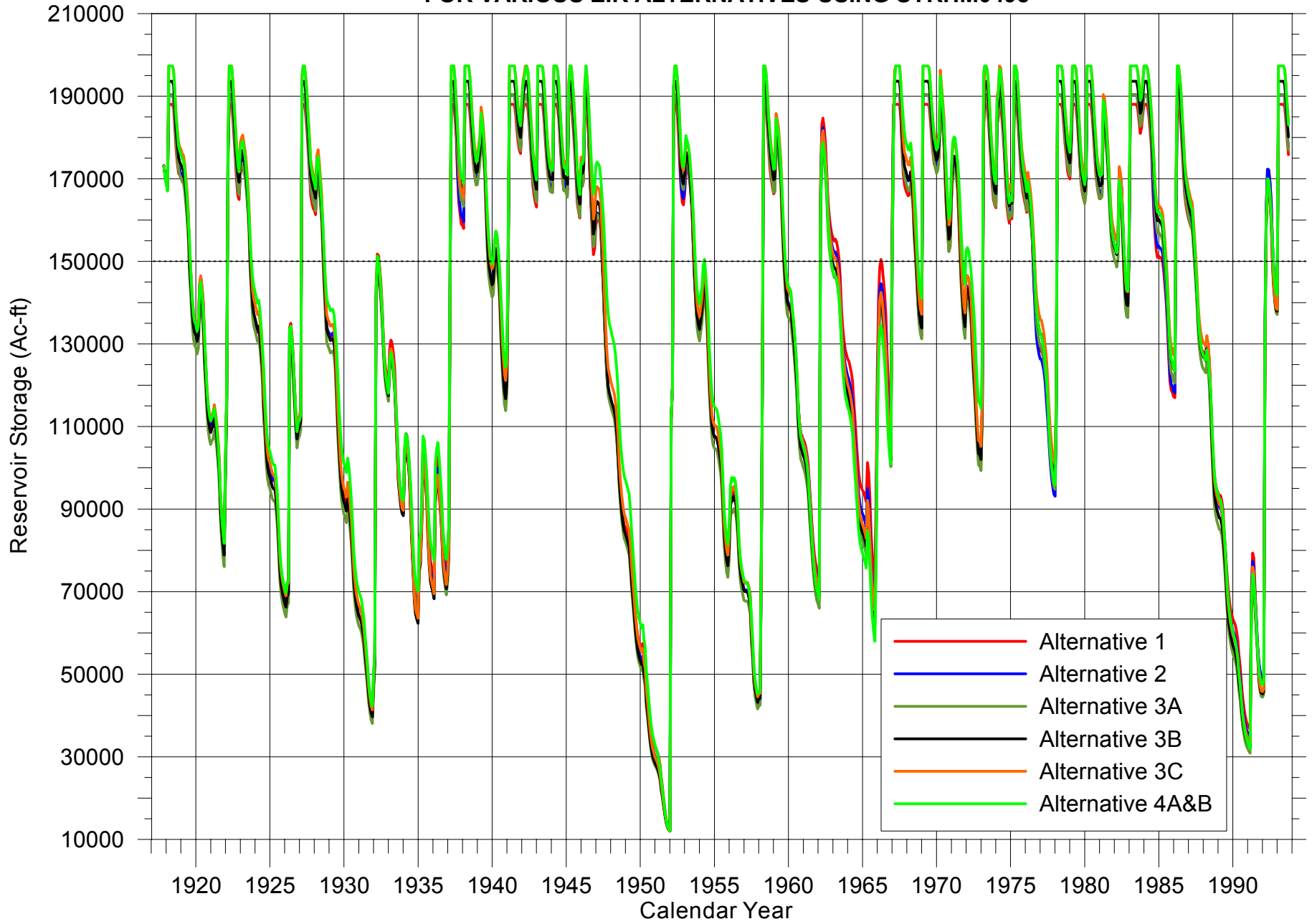
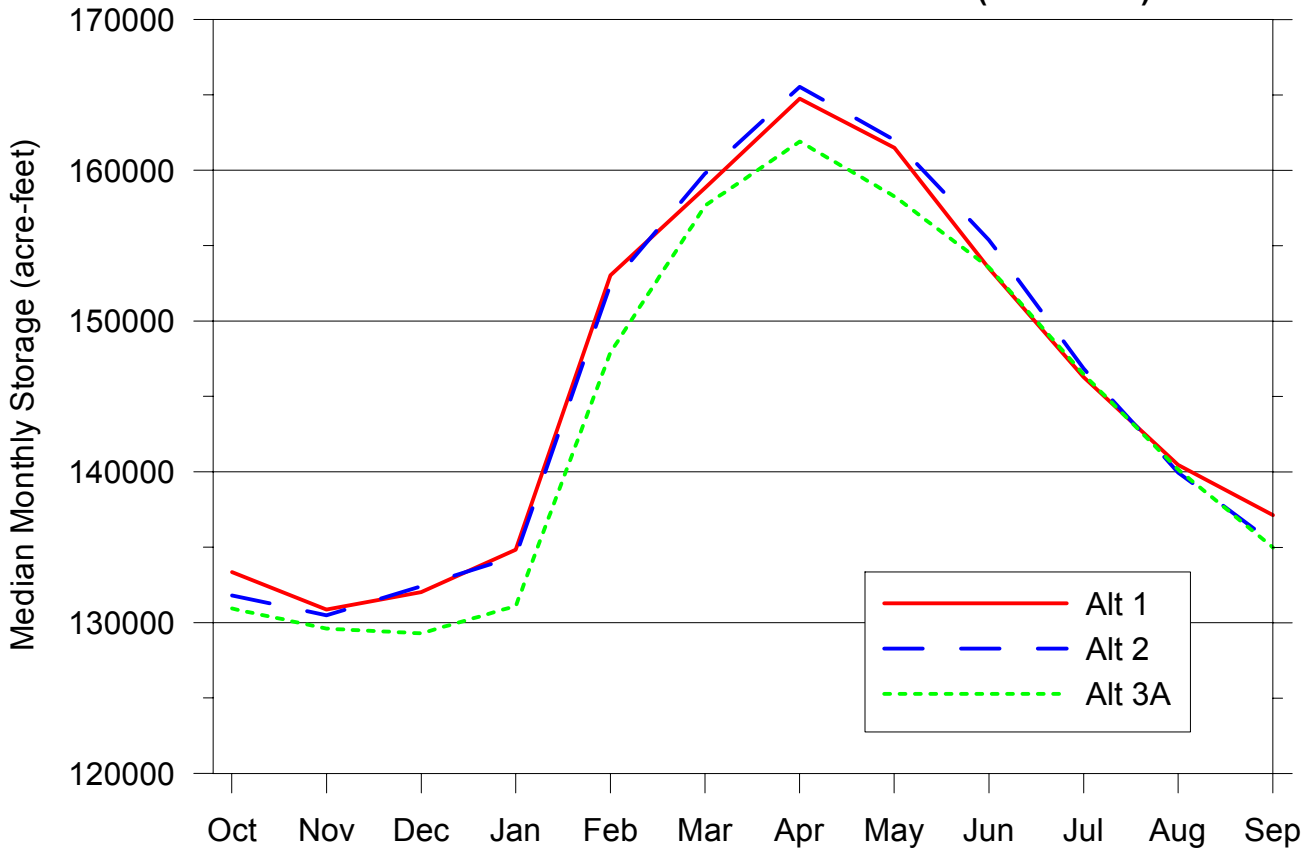
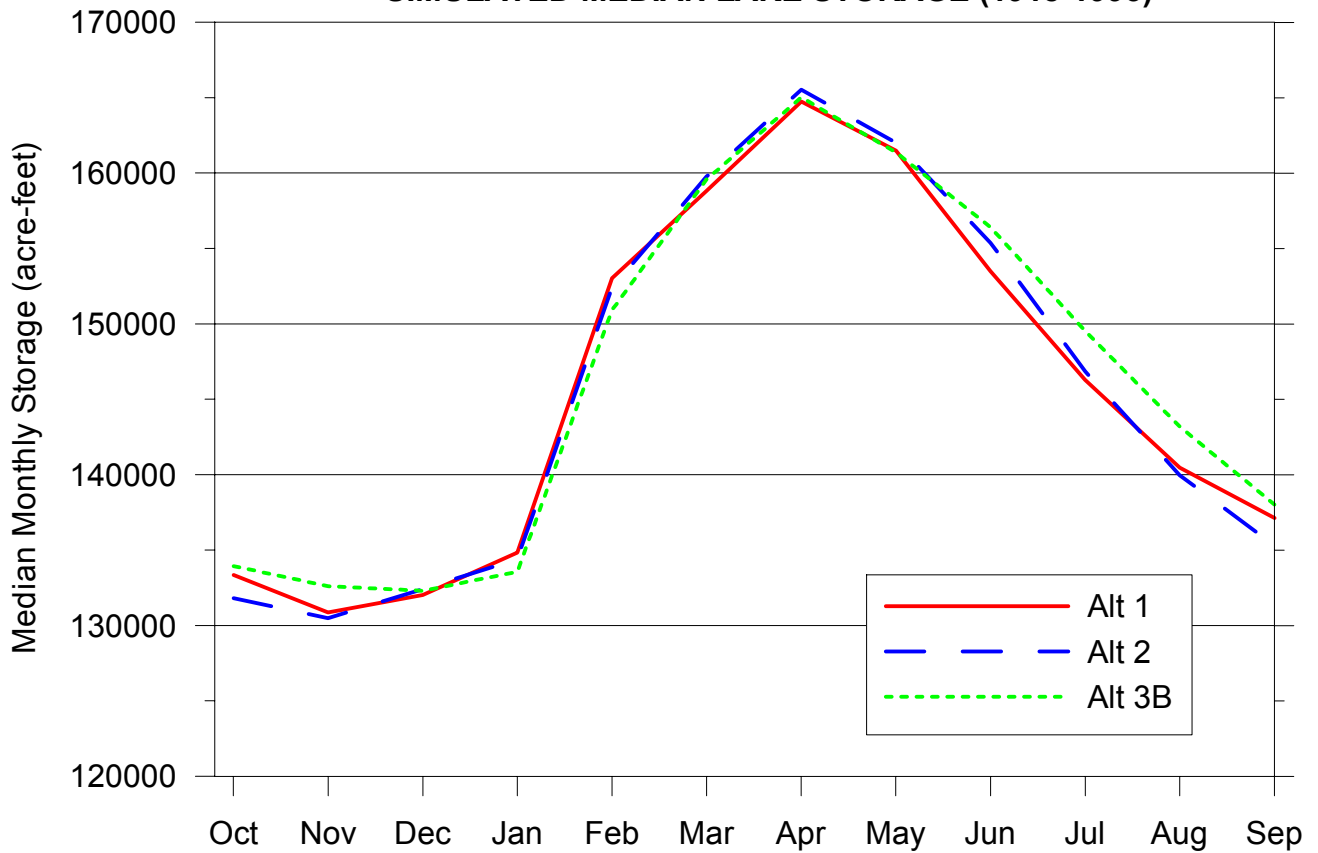


FIGURE 3-3

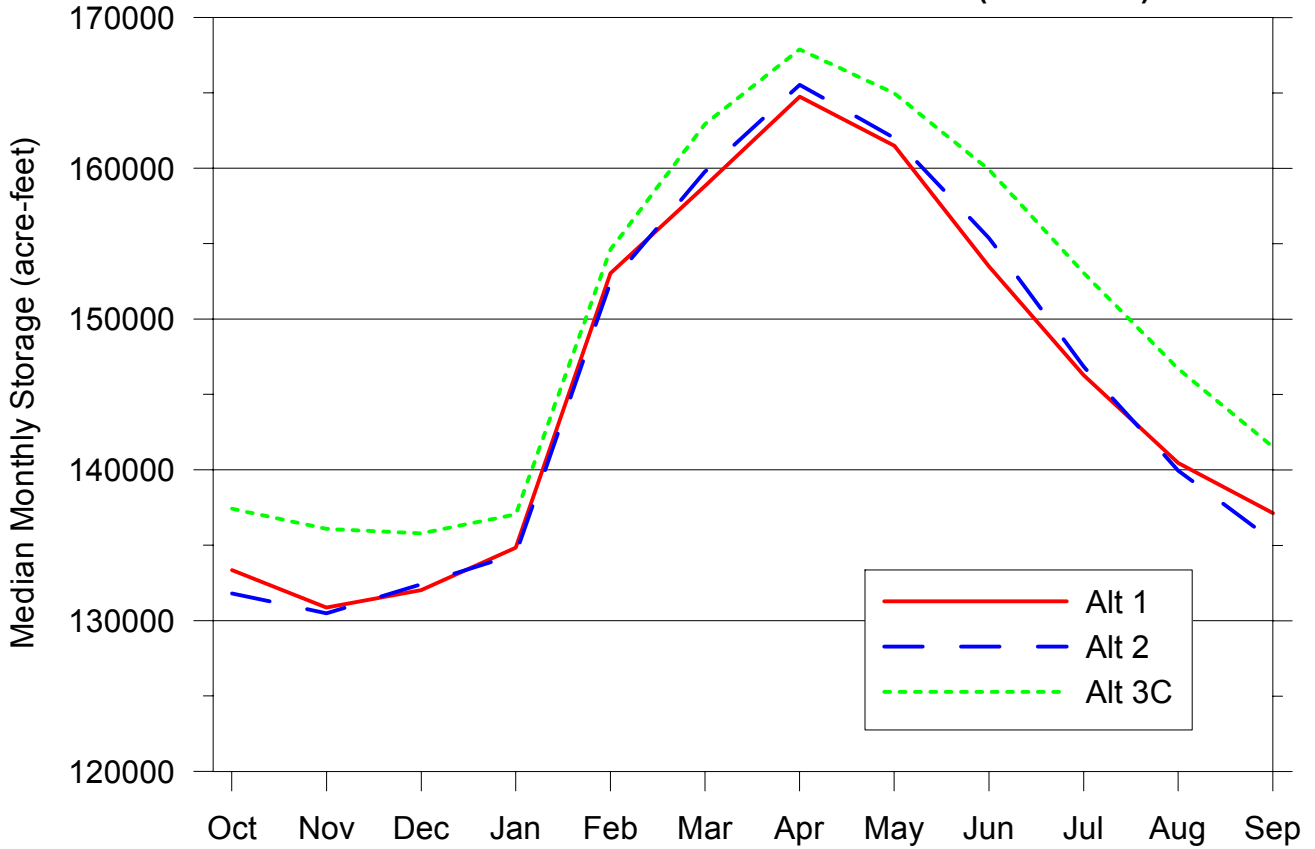
**FIGURE 3-4A**  
**SIMULATED MEDIAN LAKE STORAGE (1918-1993)**



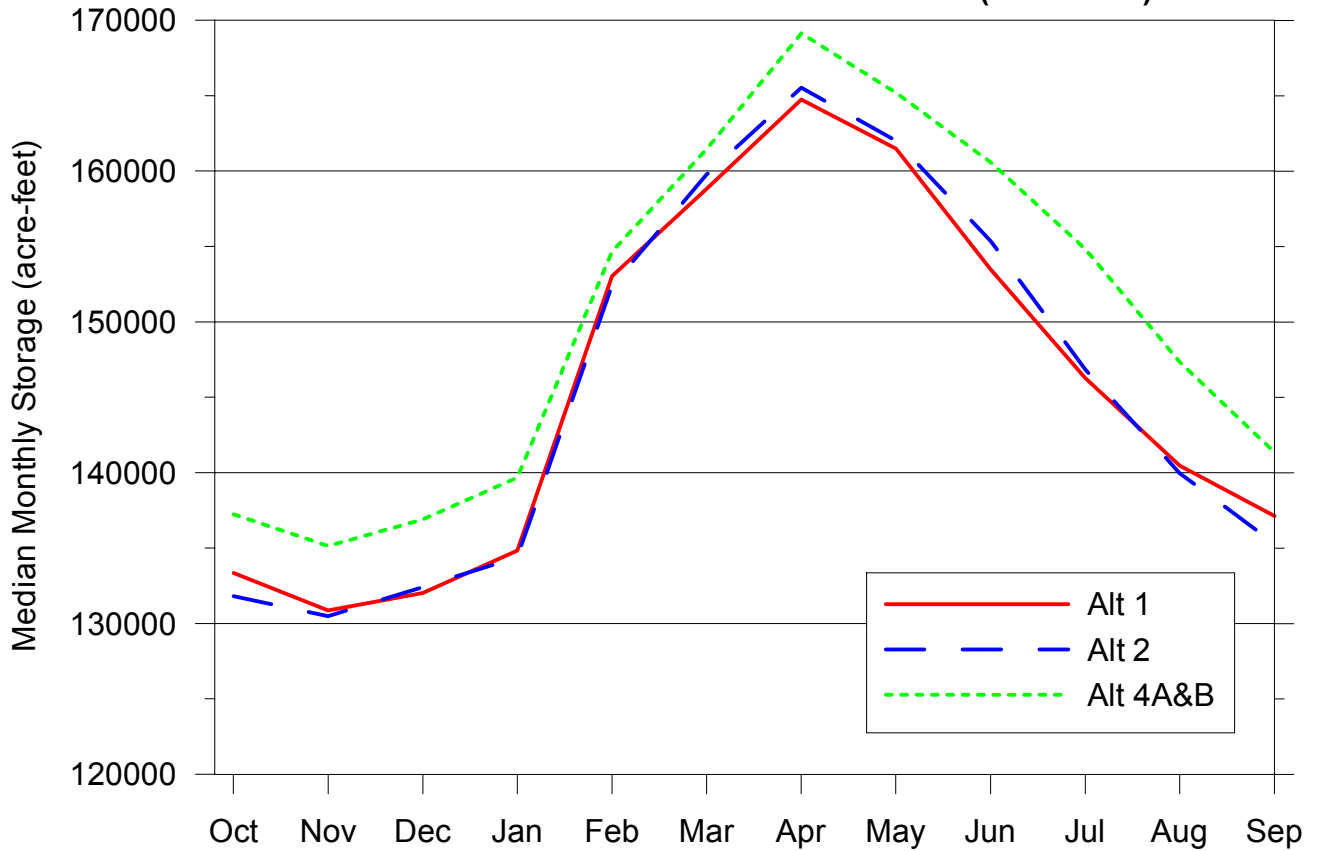
**FIGURE 3-4B**  
**SIMULATED MEDIAN LAKE STORAGE (1918-1993)**



**FIGURE 3-4C  
SIMULATED MEDIAN LAKE STORAGE (1918-1993)**

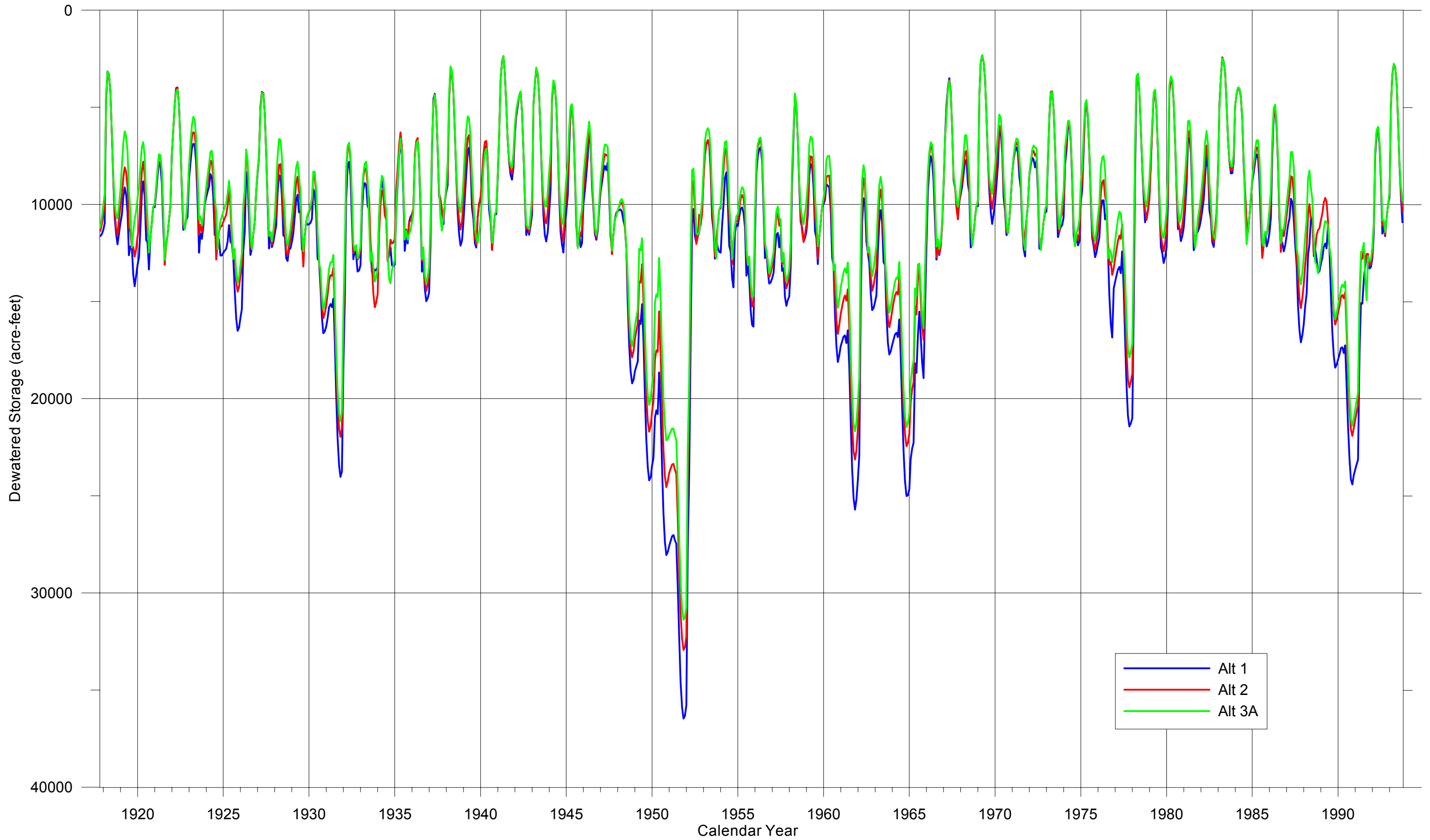


**FIGURE 3-4D  
SIMULATED MEDIAN LAKE STORAGE (1918-1993)**



Total Dewatered Storage for Above Narrows Aquifer  
Based on Santa Ynez River Hydrology Model

FIGURE 3-5A



Total Dewatered Storage for Above Narrows Aquifer  
Based on Santa Ynez River Hydrology Model

FIGURE 3-5B

