

USGS 11468000 NAVARRO R NR NAVARRO CA

00060, Discharge, cubic feet per second,												
Day of month	Mean of daily mean values for each day for 55 - 55 years of record in, cfs (Calculation Period 1950-10-01 -> 2005-09-30)											
	Calculation period restricted by USGS staff due to special conditions at/near site											
	Jan	Feb	Mar	Apr	May	Jun	Jul	Aug	Sep	Oct	Nov	Dec
1	1,680	1,260	1,320	911	293	94	33	14	9.6	16	38	798
2	1,170	1,160	1,090	830	253	87	32	14	9.5	16	39	772
3	887	1,140	1,020	711	221	82	31	13	9.1	16	40	1,010
4	1,040	1,150	1,050	643	208	77	30	13	8.9	15	38	932
5	1,290	1,250	1,220	590	196	77	29	13	8.9	15	40	764
6	1,160	1,270	1,080	595	183	76	28	12	8.9	16	61	737
7	1,180	1,390	893	522	171	72	27	13	8.7	16	79	759
8	1,340	1,610	1,010	489	163	71	26	12	8.6	16	77	606
9	2,070	1,570	1,410	513	160	77	26	12	8.8	41	92	784
10	1,340	1,200	1,110	498	152	71	25	12	9.6	43	240	882
11	1,350	1,140	1,030	618	145	65	25	12	9.3	34	309	678
12	1,960	1,360	1,050	549	136	61	24	12	9	82	242	633
13	2,040	1,740	1,200	531	130	58	23	11	8.7	121	248	489
14	2,310	1,570	1,150	526	123	55	22	11	8.8	60	279	685
15	2,150	1,670	1,180	491	120	53	21	11	8.8	40	276	731
16	3,110	2,060	1,090	445	115	51	21	11	8.9	37	450	811
17	2,250	2,380	1,030	403	110	49	20	11	9.3	31	481	774
18	1,660	2,110	1,020	393	165	47	20	10	11	27	323	629
19	1,480	2,030	907	352	190	46	19	11	12	25	271	1,120
20	1,850	1,890	870	334	150	44	19	11	10	26	336	1,020
21	2,390	1,850	928	365	136	42	18	11	9.8	25	286	1,410
22	1,830	1,470	1,070	315	127	41	18	11	9.8	27	272	2,310
23	1,690	1,230	1,030	340	121	40	17	11	9.6	37	402	1,590
24	1,860	1,430	1,070	388	110	39	17	10	9.7	40	432	1,230
25	1,490	1,410	1,070	587	103	37	17	10	9.7	47	358	977
26	1,810	1,130	961	336	97	36	16	10	10	44	299	829
27	1,710	1,070	909	386	137	35	16	9.9	13	38	314	1,230
28	1,310	1,220	860	383	133	35	15	10	14	51	334	1,170
29	1,290	1,480	865	384	146	35	15	11	12	39	341	1,290
30	1,230		1,110	336	121	35	15	9.9	12	47	525	1,270
31	1,290		986		102		14	9.6		46		1,690

Watershed Weighted Mean Annual Precipitation

Watershed	Area (ac)	Mean Annual Precipitation (in)	Volume (ac-in)	Percent of Gage (%)
USGS 11468000 Navarro River Near Navarro, CA				
	1,907	39	74,373	
	20,327	39.5	802,917	
	22,794	40.5	923,157	
	7,936	40.5	321,408	
	1,576	40	63,040	
	43,013	41.5	1,785,040	
	19,306	42.5	820,505	
	16,393	43.5	713,096	
	15,041	44.5	669,325	
	11	45	495	
	9,948	45.5	452,634	
	8,934	46.5	415,431	
	11,089	47.5	526,728	
	8,697	48.5	421,805	
	672	49.5	33,264	
	202	49.5	9,999	
	3,792	49.5	187,704	
	2,530	46.5	117,645	
	<u>1,103</u>	46	<u>50,738</u>	
Total	195,271		8,389,301	
Weighted Average		42.96		-
Donovan				
	47.7	45	2,147	
Total	48	45.00	2,147	
Weighted Average		45.0		104.74%

Watershed Weighted Area

Watershed	Area (ac)	Percent of Gage (%)
USGS 11468000 Navarro River Near Navarro, CA		
Total	193,920	
Weighted Average		-
Donovan		
Total	48	
Weighted Average		0.02%

A030926 Donovan

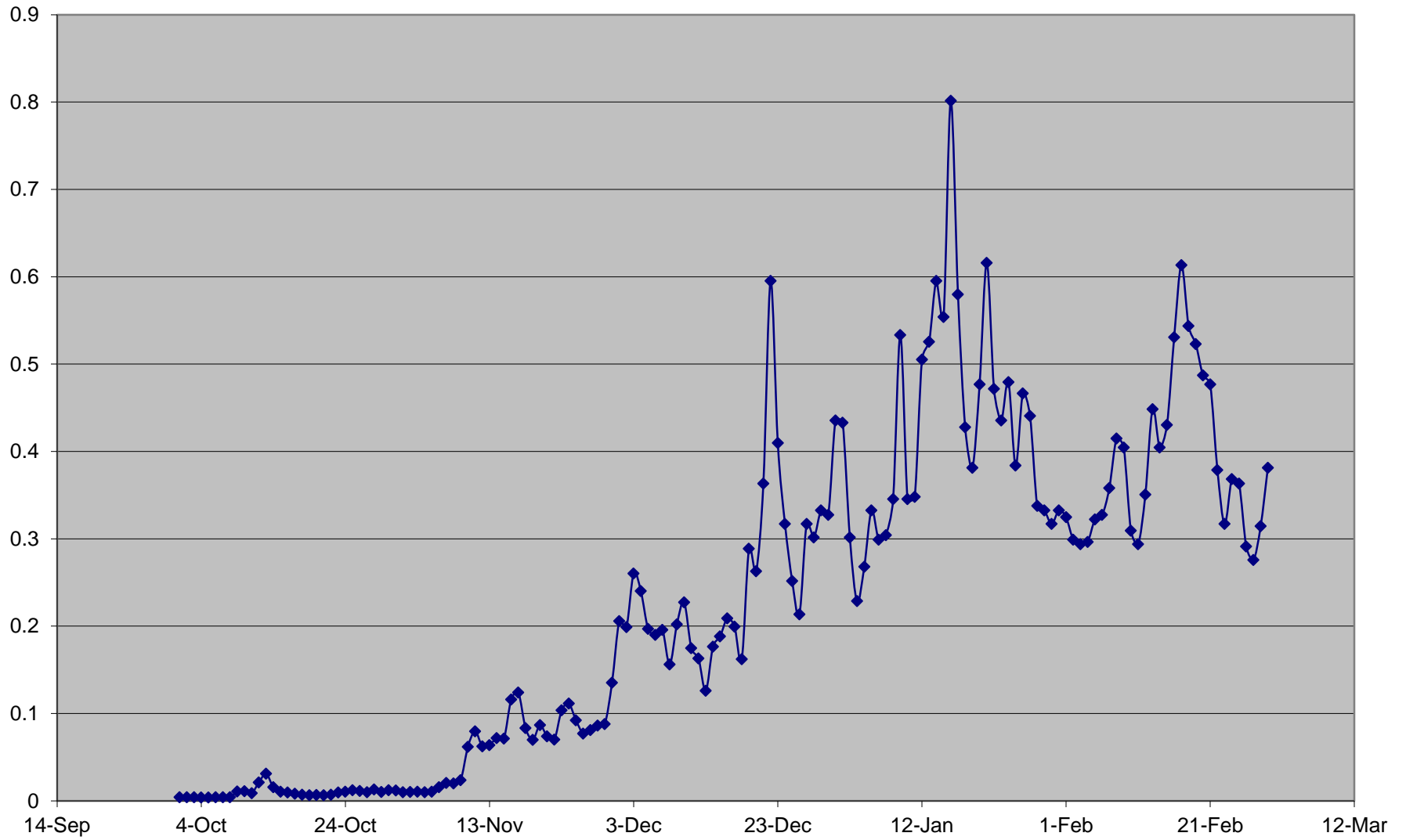
Discharge, cubic feet per second,												
Day of month	Mean of daily mean values for each day for 55 - 55 years of record in, cfs (Calculation Period 1950-10-01 -> 2005-09-30)											
	Calculation period restricted by USGS staff due to special conditions at/near site											
	Jan	Feb	Mar	Apr	May	Jun	Jul	Aug	Sep	Oct	Nov	Dec
1	0.43	0.32	0.34	0.23	0.08	0.02	0.01	0.00	0.00	0.00	0.01	0.21
2	0.30	0.30	0.28	0.21	0.07	0.02	0.01	0.00	0.00	0.00	0.01	0.20
3	0.23	0.29	0.26	0.18	0.06	0.02	0.01	0.00	0.00	0.00	0.01	0.26
4	0.27	0.30	0.27	0.17	0.05	0.02	0.01	0.00	0.00	0.00	0.01	0.24
5	0.33	0.32	0.31	0.15	0.05	0.02	0.01	0.00	0.00	0.00	0.01	0.20
6	0.30	0.33	0.28	0.15	0.05	0.02	0.01	0.00	0.00	0.00	0.02	0.19
7	0.30	0.36	0.23	0.13	0.04	0.02	0.01	0.00	0.00	0.00	0.02	0.20
8	0.35	0.41	0.26	0.13	0.04	0.02	0.01	0.00	0.00	0.00	0.02	0.16
9	0.53	0.40	0.36	0.13	0.04	0.02	0.01	0.00	0.00	0.01	0.02	0.20
10	0.35	0.31	0.29	0.13	0.04	0.02	0.01	0.00	0.00	0.01	0.06	0.23
11	0.35	0.29	0.27	0.16	0.04	0.02	0.01	0.00	0.00	0.01	0.08	0.17
12	0.50	0.35	0.27	0.14	0.04	0.02	0.01	0.00	0.00	0.02	0.06	0.16
13	0.53	0.45	0.31	0.14	0.03	0.01	0.01	0.00	0.00	0.03	0.06	0.13
14	0.60	0.40	0.30	0.14	0.03	0.01	0.01	0.00	0.00	0.02	0.07	0.18
15	0.55	0.43	0.30	0.13	0.03	0.01	0.01	0.00	0.00	0.01	0.07	0.19
16	0.80	0.53	0.28	0.11	0.03	0.01	0.01	0.00	0.00	0.01	0.12	0.21
17	0.58	0.61	0.27	0.10	0.03	0.01	0.01	0.00	0.00	0.01	0.12	0.20
18	0.43	0.54	0.26	0.10	0.04	0.01	0.01	0.00	0.00	0.01	0.08	0.16
19	0.38	0.52	0.23	0.09	0.05	0.01	0.00	0.00	0.00	0.01	0.07	0.29
20	0.48	0.49	0.22	0.09	0.04	0.01	0.00	0.00	0.00	0.01	0.09	0.26
21	0.62	0.48	0.24	0.09	0.04	0.01	0.00	0.00	0.00	0.01	0.07	0.36
22	0.47	0.38	0.28	0.08	0.03	0.01	0.00	0.00	0.00	0.01	0.07	0.60
23	0.44	0.32	0.27	0.09	0.03	0.01	0.00	0.00	0.00	0.01	0.10	0.41
24	0.48	0.37	0.28	0.10	0.03	0.01	0.00	0.00	0.00	0.01	0.11	0.32
25	0.38	0.36	0.28	0.15	0.03	0.01	0.00	0.00	0.00	0.01	0.09	0.25
26	0.47	0.29	0.25	0.09	0.02	0.01	0.00	0.00	0.00	0.01	0.08	0.21
27	0.44	0.28	0.23	0.10	0.04	0.01	0.00	0.00	0.00	0.01	0.08	0.32
28	0.34	0.31	0.22	0.10	0.03	0.01	0.00	0.00	0.00	0.01	0.09	0.30
29	0.33	0.38	0.22	0.10	0.04	0.01	0.00	0.00	0.00	0.01	0.09	0.33
30	0.32		0.29	0.09	0.03	0.01	0.00	0.00	0.00	0.01	0.14	0.33
31	0.33		0.25		0.03		0.00	0.00		0.01		0.44

Total Sum 13.37742

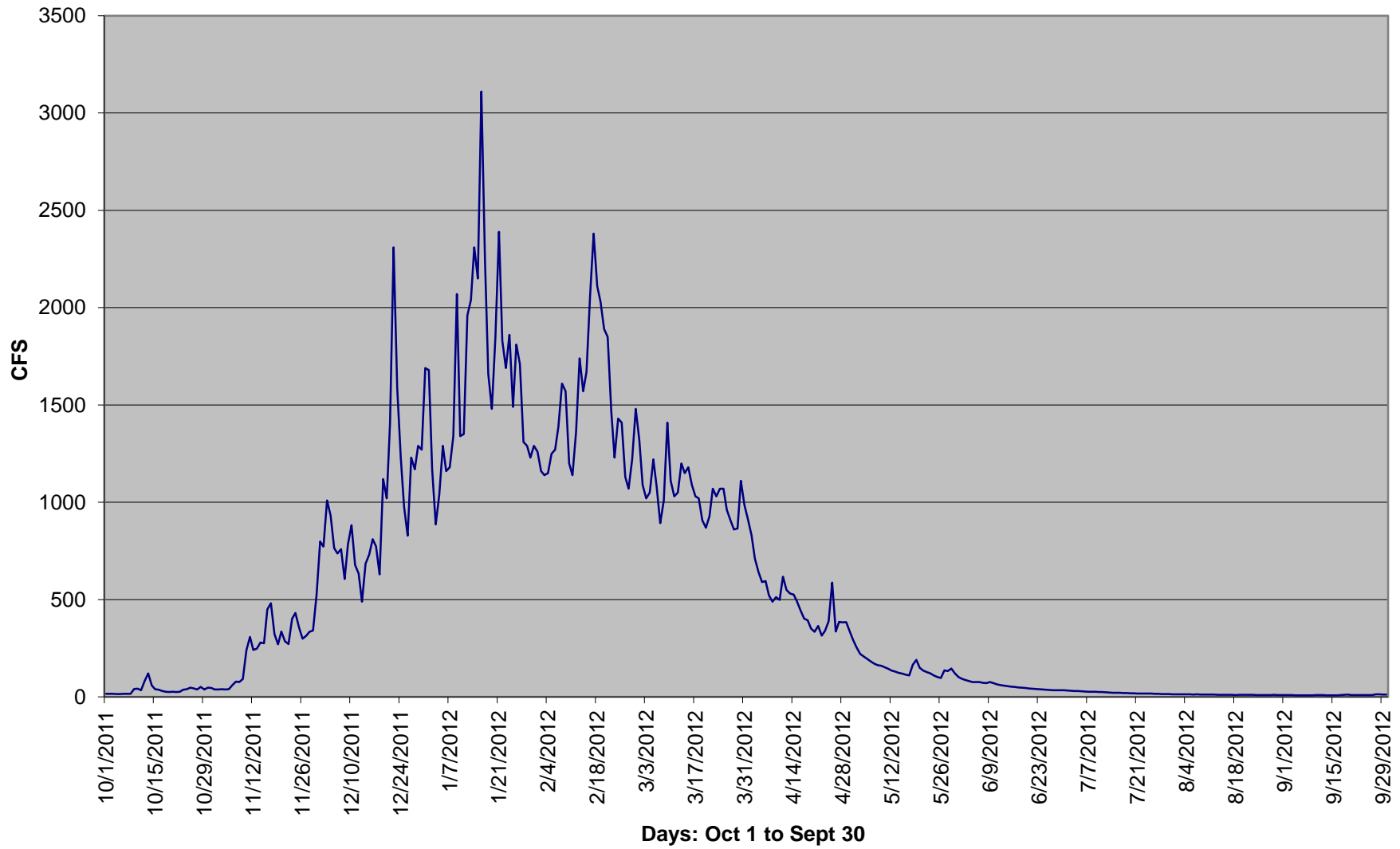
Day of Diversion= 0.25cfs or greater

Days 17

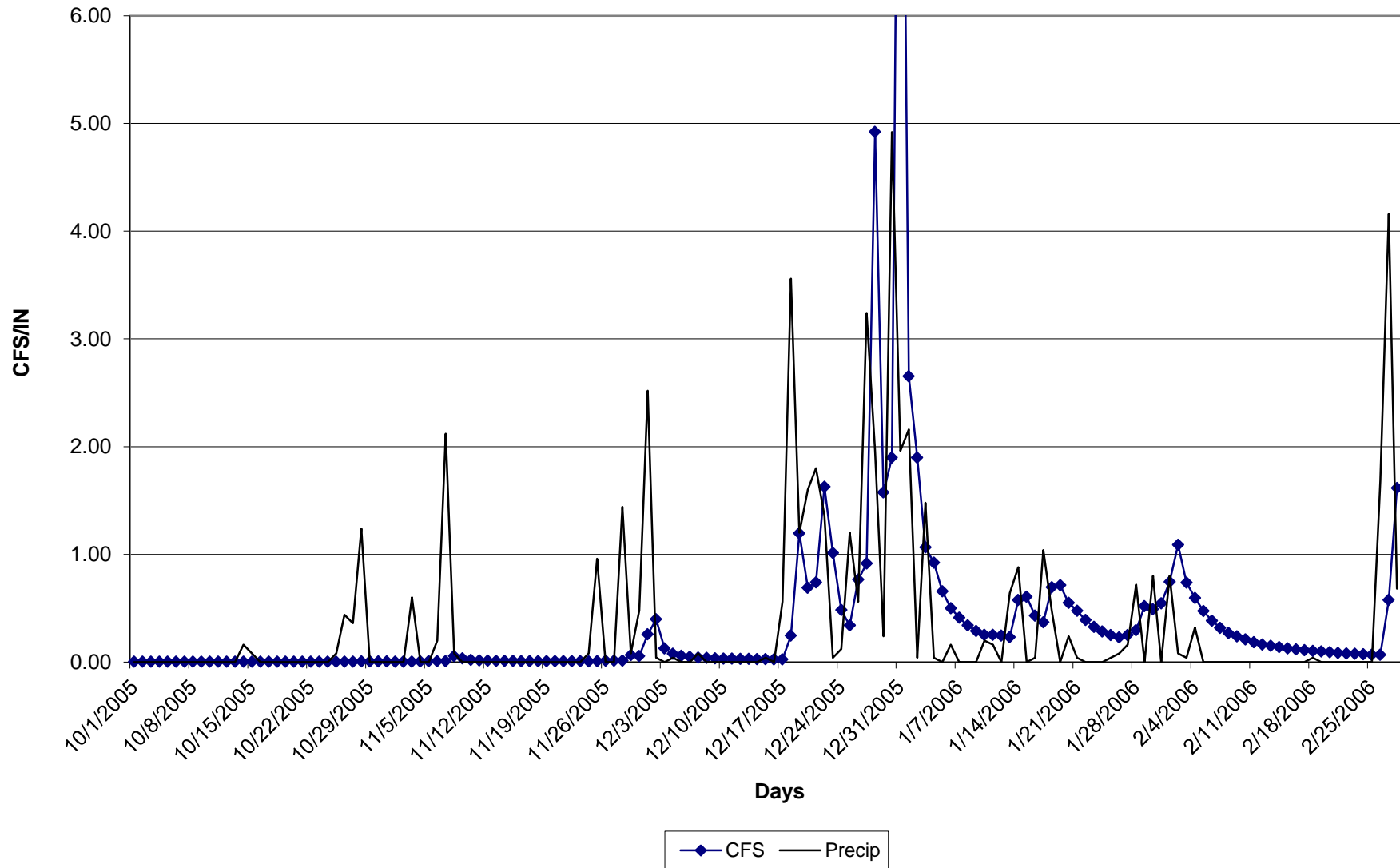
Site



Navarro Watershed Gage



Flow vs. Precip



Data	Gage CFS	Site CFS	Site Precip
10/1/2005	9.4	0.00	0
10/2/2005	9.5	0.00	0
10/3/2005	9.9	0.00	0
10/4/2005	9.9	0.00	0
10/5/2005	9.4	0.00	0
10/6/2005	9.6	0.00	0
10/7/2005	9.8	0.00	0
10/8/2005	9.8	0.00	0
10/9/2005	10	0.00	0
10/10/2005	10	0.00	0
10/11/2005	10	0.00	0
10/12/2005	10	0.00	0
10/13/2005	11	0.00	0
10/14/2005	10	0.00	0.16
10/15/2005	11	0.00	0.08
10/16/2005	12	0.00	0
10/17/2005	12	0.00	0
10/18/2005	12	0.00	0
10/19/2005	12	0.00	0
10/20/2005	12	0.00	0
10/21/2005	12	0.00	0
10/22/2005	12	0.00	0
10/23/2005	12	0.00	0
10/24/2005	12	0.00	0
10/25/2005	12	0.00	0.08
10/26/2005	13	0.00	0.44
10/27/2005	13	0.00	0.36
10/28/2005	17	0.00	1.24
10/29/2005	24	0.01	0
10/30/2005	21	0.01	0
10/31/2005	17	0.00	0
11/1/2005	16	0.00	0
11/2/2005	15	0.00	0
11/3/2005	16	0.00	0.6
11/4/2005	22	0.01	0
11/5/2005	33	0.01	0
11/6/2005	26	0.01	0.2
11/7/2005	29	0.01	2.12
11/8/2005	216	0.06	0.08
11/9/2005	132	0.03	0
11/10/2005	75	0.02	0
11/11/2005	57	0.01	0
11/12/2005	48	0.01	0
11/13/2005	43	0.01	0
11/14/2005	40	0.01	0
11/15/2005	38	0.01	0
11/16/2005	31	0.01	0
11/17/2005	29	0.01	0
11/18/2005	28	0.01	0
11/19/2005	27	0.01	0
11/20/2005	27	0.01	0

Data	Gage CFS	Site CFS	Site Precip	
11/21/2005	26	0.01	0	
11/22/2005	26	0.01	0	
11/23/2005	26	0.01	0	
11/24/2005	25	0.01	0.08	
11/25/2005	34	0.01	0.96	
11/26/2005	53	0.01	0	
11/27/2005	50	0.01	0	
11/28/2005	49	0.01	1.44	
11/29/2005	252	0.06	0.08	
11/30/2005	215	0.06	0.48	
12/1/2005	995	0.26	2.52	
12/2/2005	1540	0.40	0.04	
12/3/2005	488	0.13	0	
12/4/2005	294	0.08	0.04	
12/5/2005	224	0.06	0	
12/6/2005	183	0.05	0	
12/7/2005	159	0.04	0.08	
12/8/2005	147	0.04	0	
12/9/2005	136	0.04	0	
12/10/2005	127	0.03	0	
12/11/2005	119	0.03	0	
12/12/2005	113	0.03	0	
12/13/2005	109	0.03	0	
12/14/2005	105	0.03	0	
12/15/2005	102	0.03	0.04	
12/16/2005	99	0.03	0	
12/17/2005	98	0.03	0.56	
12/18/2005	948	0.24	3.56	
12/19/2005	4640	1.20	1.2	
12/20/2005	2680	0.69	1.6	
12/21/2005	2870	0.74	1.8	
12/22/2005	6320	1.63	1.36	
12/23/2005	3930	1.01	0.04	
12/24/2005	1870	0.48	0.12	
12/25/2005	1320	0.34	1.2	Total 13.43 = 10days
12/26/2005	2970	0.77	0.56	
12/27/2005	3550	0.91	3.24	
12/28/2005	19100	4.92	1.96	
12/29/2005	6110	1.57	0.24	
12/30/2005	7370	1.90	4.92	
12/31/2005	44400	11.44	1.96	
1/1/2006	10300	2.65	2.16	
1/2/2006	7370	1.90	0.04	
1/3/2006	4130	1.06	1.48	
1/4/2006	3580	0.92	0.04	
1/5/2006	2550	0.66	0	
1/6/2006	1940	0.50	0.16	
1/7/2006	1600	0.41	0	
1/8/2006	1320	0.34	0	
1/9/2006	1120	0.29	0	
1/10/2006	978	0.25	0.2	

Data	Gage CFS	Site CFS	Site Precip
1/11/2006	982	0.25	0.16
1/12/2006	948	0.24	0
1/13/2006	897	0.23	0.64
1/14/2006	2230	0.57	0.88
1/15/2006	2350	0.61	0
1/16/2006	1670	0.43	0.04
1/17/2006	1430	0.37	1.04
1/18/2006	2690	0.69	0.48
1/19/2006	2770	0.71	0
1/20/2006	2130	0.55	0.24
1/21/2006	1850	0.48	0.04
1/22/2006	1510	0.39	0
1/23/2006	1270	0.33	0
1/24/2006	1100	0.28	0
1/25/2006	966	0.25	0.04
1/26/2006	885	0.23	0.08
1/27/2006	974	0.25	0.16
1/28/2006	1150	0.30	0.72
1/29/2006	2010	0.52	0
1/30/2006	1900	0.49	0.8
1/31/2006	2110	0.54	0
2/1/2006	2890	0.74	0.8
2/2/2006	4220	1.09	0.08
2/3/2006	2860	0.74	0.04
2/4/2006	2310	0.60	0.32
2/5/2006	1840	0.47	0
2/6/2006	1490	0.38	0
2/7/2006	1230	0.32	0
2/8/2006	1040	0.27	0
2/9/2006	923	0.24	0
2/10/2006	812	0.21	0
2/11/2006	712	0.18	0
2/12/2006	634	0.16	0
2/13/2006	580	0.15	0
2/14/2006	535	0.14	0
2/15/2006	492	0.13	0
2/16/2006	452	0.12	0
2/17/2006	423	0.11	0
2/18/2006	402	0.10	0.04
2/19/2006	377	0.10	0
2/20/2006	349	0.09	0
2/21/2006	328	0.08	0
2/22/2006	310	0.08	0
2/23/2006	294	0.08	0
2/24/2006	279	0.07	0
2/25/2006	265	0.07	0
2/26/2006	261	0.07	1.68
2/27/2006	2230	0.57	4.16
2/28/2006	6270	1.62	0.68