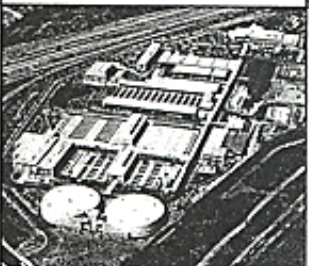
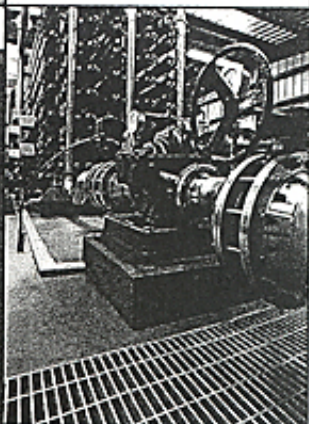


ATTACHMENT B

SDCWA, Urban Management Plan

2000 Urban Water Management Plan



San Diego County Water Authority

Prepared by:
San Diego County Water Authority
Water Resources Department

With assistance provided by the following Departments:
Imported Water
General Counsel
Operations and Maintenance
Engineering

December 2000

San Diego County Water Authority
4677 Overland Avenue
San Diego, CA 92123
www.sdcwa.org



SECTION 1 – INTRODUCTION	1-1
1.1 California Urban Water Management Planning Act	1-1
1.2 Authority’s 2000 Urban Water Management Plan	1-2
1.3 History and Description of Authority	1-2
1.3.1 History	1-2
1.3.2 Service Area	1-3
1.3.3 Member Agencies	1-3
1.4 Authority Physical Water Delivery System	1-4
1.4.1 Capital Improvement Program	1-4
1.5 Service Area Characteristics	1-7
1.5.1 Regional Economy and Demographics	1-8
1.5.2 Climate	1-8
1.5.3 Population	1-10
 SECTION 2 – WATER DEMANDS	 2-1
2.1 Municipal and Industrial Water Demand	2-1
2.1.1 Residential Demand	2-1
2.1.2 Commercial and Industrial Demand	2-1
2.2 Agricultural Water Demand	2-2
2.3 Total Current and Historic Water Use	2-3
2.4 Projected Water Demands	2-4
 SECTION 3 – IMPORTED WATER SUPPLIES	 3-1
3.1 Metropolitan Water District	3-3
3.1.1 Colorado River	3-3
3.1.2 State Water Project	3-7
3.1.3 Salinity Issues	3-12
3.1.4 Water Supply from Metropolitan	3-14
3.2 Authority-IID Water Transfer	3-16
3.2.1 The Authority-IID Water Conservation and Transfer Agreement	3-16
3.2.2 The Authority-Metropolitan Water Exchange Agreement	3-18
3.2.3 Regional Colorado River Conveyance Feasibility Study	3-18
3.3 Other Competitive Imported Water Sources	3-20
3.3.1 Other Transfers	3-20
3.3.2 Non-firm Supplies from Metropolitan	3-22
3.4 Summary of Imported Water Supplies	3-22
 SECTION 4 – LOCAL WATER SUPPLIES	 4-1
4.1 Demand Management	4-1
4.1.1 Description	4-1
4.1.2 Issues	4-3
4.1.3 Future Water Conservation Savings	4-4

4.2 Surface Water	4-6
4.2.1 Description	4-6
4.2.2 Issues	4-7
4.2.3 Future Surface Water Supplies	4-8
4.3 Water Recycling	4-8
4.3.1 Description – Water Recycling	4-8
4.3.2 Issues	4-9
4.3.3 Encouraging Recycled Water Development	4-12
4.3.4 Future Recycled Water Use	4-16
4.3.5 Wastewater Generation, Collection, Treatment and Disposal	4-16
4.4 Groundwater	4-16
4.4.1 Description	4-16
4.4.2 Issues	4-21
4.4.3 Future Groundwater Supplies	4-22
4.5 Seawater Desalination	4-23
4.5.1 Description	4-23
4.5.2 Issues	4-24
4.5.3 Future Seawater Desalination Supplies	4-26
4.6 Summary of Local Supplies	4-26
SECTION 5 – WATER SUPPLY RELIABILITY	5-1
5.1 Development of Proposed Water Resources Mix	5-1
5.2 Average/Normal Water Year Assessment	5-2
5.3 Dry Water Year Assessment	5-2
SECTION 6 – SHORTAGE CONTINGENCY ANALYSIS	6-1
6.1 Catastrophic Water Shortage	6-1
6.1.1 Emergency Response Plan	6-1
6.1.2 Authority's Emergency Storage Project	6-2
6.2 Drought Management	6-3
6.2.1 Background – 1987-1992 Drought	6-3
6.2.2 Plan for Diversifying Supplies	6-4
6.2.3 Metropolitan Water Surplus and Drought Management Plan	6-5
6.3 Summary	6-6
APPENDIX A - California Urban Water Management Planning Act	
APPENDIX B - Authority Board of Directors Resolution 00-30	
APPENDIX C - DWR 2000 Urban Water Management Plan Checklist	
APPENDIX D - CUWCC BMP Report	
APPENDIX E - Recycled Water and Groundwater Projections	