

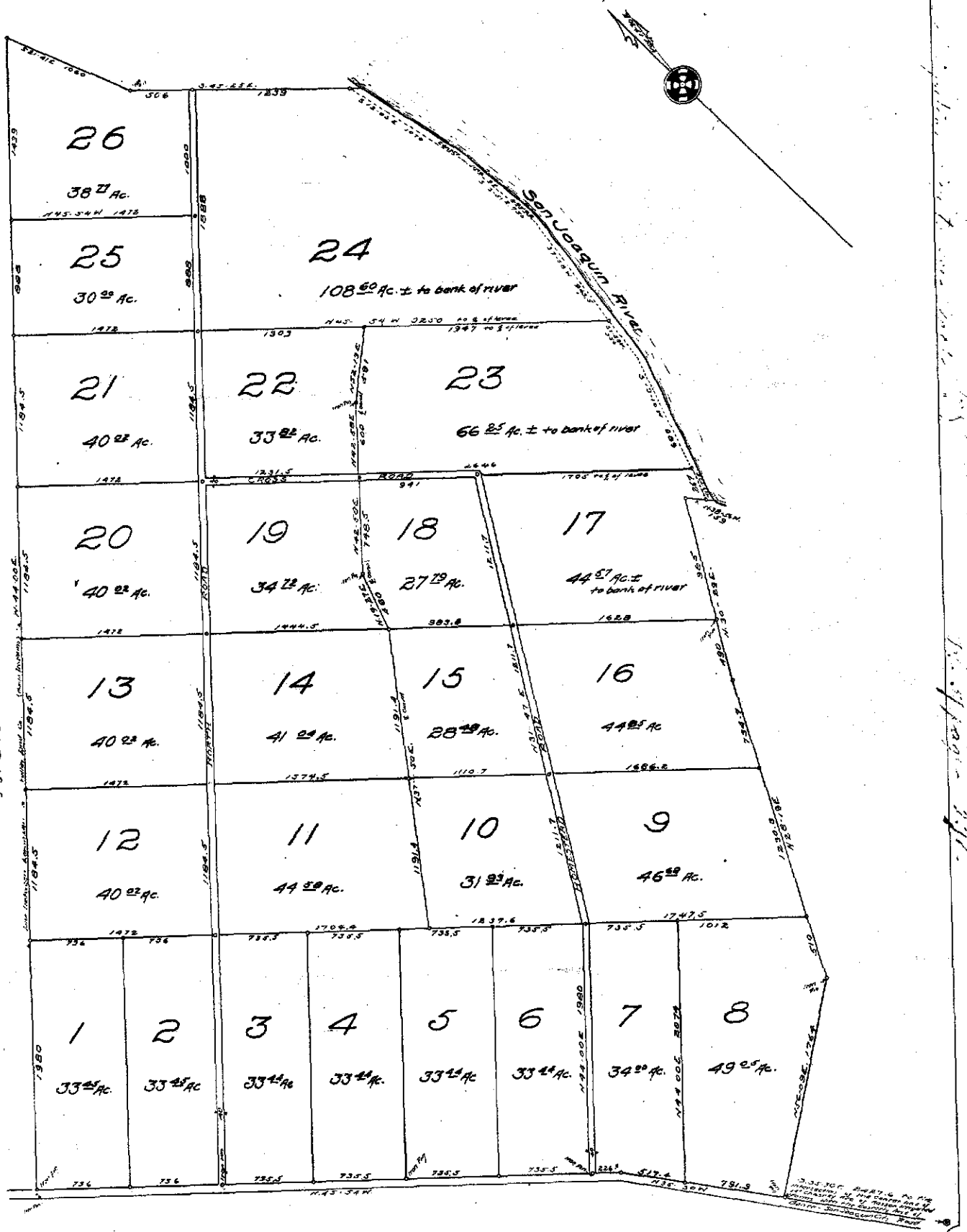
# BANTA IRRIGATED FARMS.

In the Rancho El Pescadero

Surveyed July 1914 by E. S. Dupont Scale 500 ft. per inch  
 Lot Corners are marked on the ground by 4x4 post except as noted  
 Acreage of lots along the river are to waters edge

In two sheets Sheet No 1

Land of H.C. Lorenzen, et al.



7/5/10      mussc-R-36