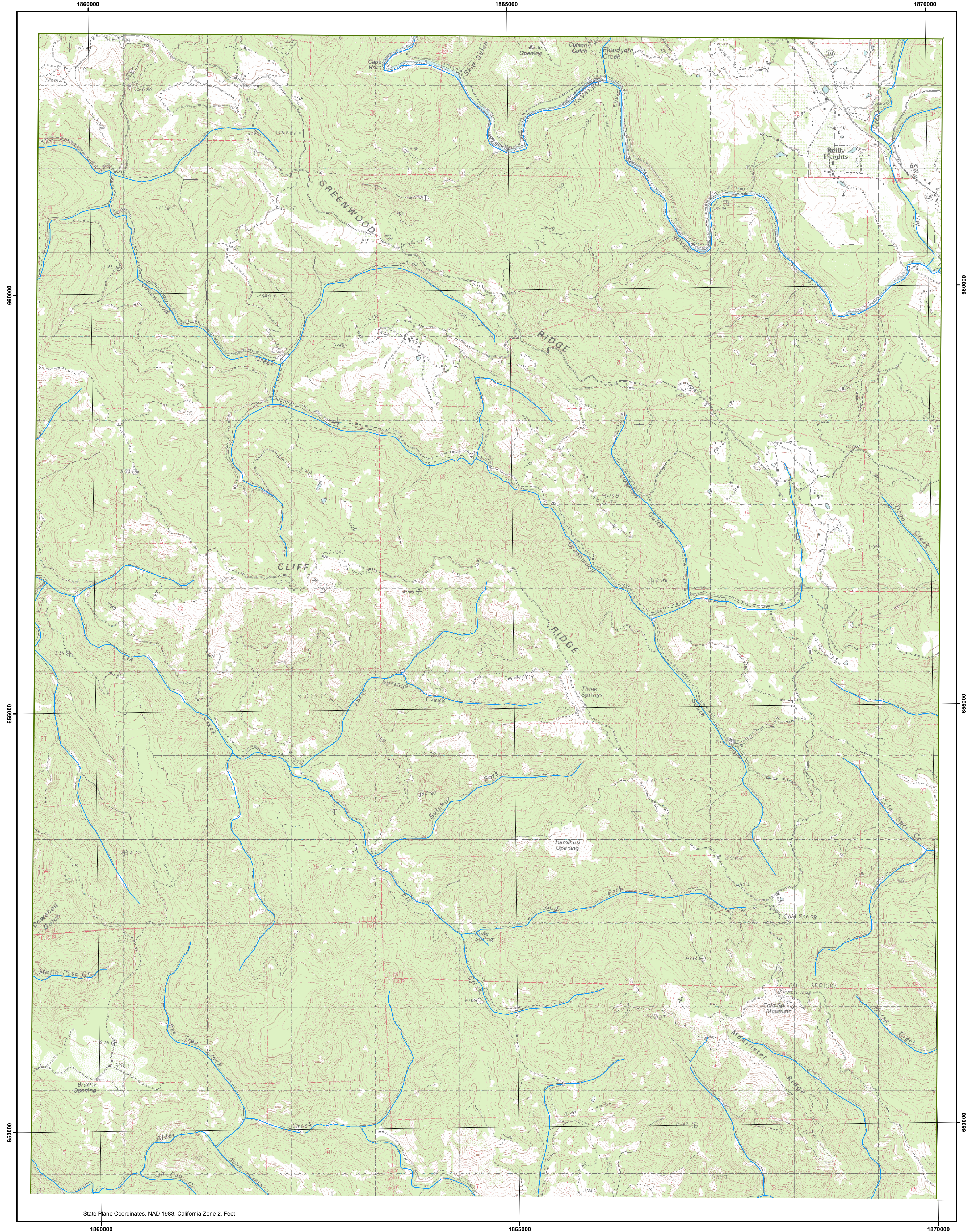
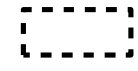
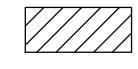
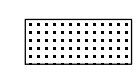


COLD SPRING



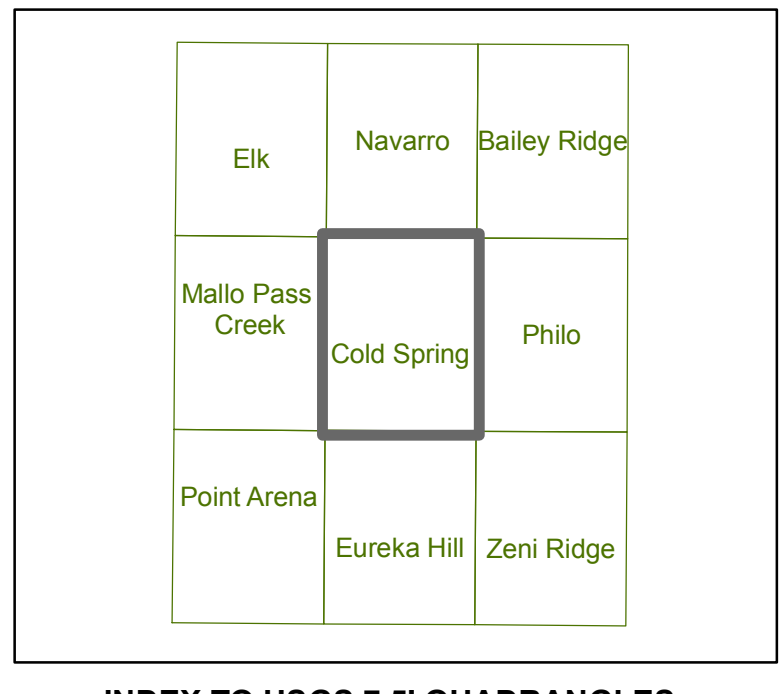
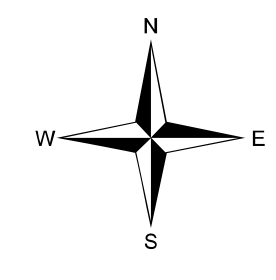
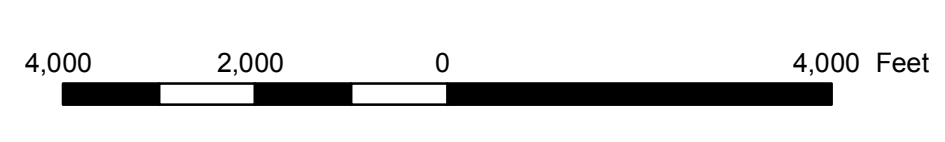
State Plane Coordinates, NAD 1983, California Zone 2, Feet

-  Subterranean Flow
-  Potential Stream Depletion Area
-  Mapped stream channel and associated alluvial deposits within a potential stream depletion area. Wells pumping from these deposits are likely to result in greater and more immediate stream depletion.

DELINEATION OF SUBTERRANEAN STREAMS AND POTENTIAL STREAM DEPLETION AREAS

COLD SPRING QUADRANGLE

FEBRUARY 14, 2008



INDEX TO USGS 7.5' QUADRANGLES

Note: Some of the delineated areas on this map do not match seamlessly with the delineated areas in adjoining quads because of differences in the geologic source maps that were used.

REFERENCE

Manson, M.W., 1984, Geology and Geomorphic Features Related to Landsliding, Cold Springs 7.5' Quadrangle, Mendocino County, California: DMG Open-File Report 84-45, reproduced on DMG CD 99-002, scale 1:24,000.

Note: Because the delineated areas on this map were based on information readily available at the time of its development, this map does not claim to represent all of the subterranean streams or potential stream depletion areas that exist in the area. Site specific investigations will be needed to verify the existence of subterranean streams or potential stream depletion areas.